



Canaipa Cup

2026

30th – 31st May 2026

SAILING INSTRUCTIONS

(SI)

Organising Authority
ROYAL QUEENSLAND YACHT SQUADRON LTD
578 Royal Esplanade, Manly, QLD 4179

The notation '[NP]' in a rule of the sailing instructions (SIs) means that a boat may not protest another boat for breaking that rule. This changes RRS 60.1.

The notation '[DP]' in a rule of the sailing instructions (SI's) means that a protest committee can award a penalty in accordance with the RRS and World Sailing guidelines (including no penalty) at their discretion. This changes RRS 60.5 and RRS 64.

1. RULES

- 1.1. The event is governed by the rules as defined in The Racing Rules of Sailing (RRS).
- 1.2. The Australian Sailing prescriptions and special regulations Part 1 – Category 5 apply.
- 1.3. Where there is a difference between the Notice of Race (NoR) and the Sailing Instructions (SI) the SI take precedence.
- 1.4 RRS Appendix T – Arbitration will apply.
- 1.5 The current IRC/OMR rules shall apply to those yachts sailing under those measurement rules.
- 1.6 For PHS divisions RRS 55.3 is changed to add RRS 55.3(e) spinnaker clue may be connected to a spinnaker pole.

2. SCHEDULE

2.1.

DATE	EVENT	FIRST WARNING SIGNAL or TIME
Saturday 30 th May 2026	Passage Race to RQYS Canaipa	1100 hrs (First Warning Signal)
	Day 1 Presentation	1730 hrs
	Dinner at RQYS Canaipa	1800 hrs
Sunday 31 st May 2026	Breakfast Rolls	0730 – 0830 hrs
	Passage Race to RQYS Manly	1000 hrs (First Warning Signal)
	Presentation	ASAP after racing TBC Via WhatsApp

2.2. On each scheduled day of racing no warning signal will be made after 1300 hrs.

3. SIGNALS MADE ASHORE

- 3.1. Signals made ashore will be displayed at the official flagpole located at the top of the Eastern Gangway of the Bill Kirby Docks. Signals made at Canaipa shall be flown from the flagpole at that location.
- 3.2. When flag AP is displayed ashore, '1 minute' is replaced with 'not less than 45 minutes' in Race Signals AP.

4. CLASS FLAGS

- 4.1. The class flags are:

FLEET	FLAG
Monohull Performance Division 1: PHS 0.950 and above	Numeral Pennant 1
Monohull Performance Division 2: PHS 0.949 and below	Numeral Pennant 2
Monohull Cruising Division	Numeral Pennant 3
Monohull Trailerable Division	Numeral Pennant 4
Multihull Division	Numeral Pennant 5

5. COURSES

- 5.1. The diagram in SI Attachment B shows the courses. It is the intention to sail “course red” (east rounding of Peel Island) Saturday and “course green” (passing Peel Island to West) Sunday. The Organising Authority may change the format of racing at any time.
- 5.2. The course number confirming the course to be sailed will be displayed from the start boat.

6. MARKS

- 6.1. The start and finish mark shall be an Orange Teardrop buoy.
- 6.2. Laid Marks shall be Orange Inflatable Marks.

7. THE START

- 7.1. The starting line is between a staff displaying an orange flag on the signal vessel at the starboard end and the course side of the port-end starting mark.
- 7.2. Boats whose warning signal has not been made shall avoid the starting area during the starting sequence for other races.
- 7.3. A boat that does not start within 15 minutes after her starting signal will be scored Did Not Start without a hearing. This changes RRS A5.1 and RRS A5.2.
- 7.4. Race 1: The starting line shall be in the vicinity of Waterloo Bay, East of Manly Outer Entrance Beacons.
- 7.5. Race 2: The starting line shall be in the vicinity of Potts Point.

8. THE FINISH

- 8.1. Race 1: The finish line shall be between a staff displaying a blue flag on the start boat at the starboard end and an Orange Buoy at the port end in the vicinity of Potts point.
- 8.2. Race 2: The finish line shall be between a staff displaying a blue flag on the start boat at the starboard end and an Orange Buoy at the port end approximately 300m from the outer Manly Harbour Leads.

9. TIME LIMITS

- 9.1. Boats failing to finish before 1630 hours on the day of the race shall be scored Did Not Finish (DNF) without a hearing. This changes RRS 35, RRS A4 and RRS A5.

10. HEARING REQUESTS

- 10.1. For each division, the protest time limit is 90 minutes after the last boat in that division finishes the last race of the day or the race committee signals no more racing today, whichever is later. The time will be posted on the official notice board.
- 10.2. Hearing request are available from the race office adjacent to the Main Rigging Lawn or the Race Committee Vessel.
- 10.3. Notices will be posted no later than 30 minutes after the protest time limit to inform competitors of hearings in which they are parties or named as witnesses. Hearings will be held at a time and place advised on the hearing notice.

11. [NP][DP]SAFETY REGULATIONS

- 11.1. [NP] All boats shall SIGN ON at least 15 minutes before the warning signal by contacting the race committee vessel on VHF Channel 72 advising the name of the boat, number of persons on board (POB), division they are starting in, and receive acknowledgement.
- 11.2. When a boat has finished it shall be deemed to have SIGNED OFF.
- 11.3. A boat that retires from a race shall notify the race committee on VHF Channel 72 as soon as possible and notify.
- 11.4. All Maritime Queensland Aquatic Event conditions must be followed including:
 - 12.1.1. Participants / safety ship are not to impede commercial shipping.
 - 12.1.2. All participating ships and safety ships are not to impede power driven vessels traversing Manly Boat Harbour and associated channels.
 - 12.1.3. All participating ships and safety ships are to be briefed on the gazetted speed limit in Manly Boat Harbour.
 - 12.1.3.1. Page 10 from the Schedule of Speed Limits In QLD in SI Attachment A.
 - 12.1.4. All participating ships and safety ships equipped with VHF are to monitor VHF channel 12 and VHF channel 16.
 - 12.1.5. The Authority Holder must ensure that ships participating in the aquatic event observe a 20-metre exclusion zone around all Aids to Navigation.
- 11.5. No Spinnakers are to be flown in the Manly Harbour 6-knot area.
- 11.6. No sailing vessel shall berth on or impede traffic to/from the RQYS fuel dock without permission from the RQYS Sailing or Marina Office.

12. REPLACEMENT OF CREW OR EQUIPMENT

- 12.1. [DP] Substitution of competitors is not allowed without prior written approval of the Race Committee.
- 12.2. [DP] Substitution of damaged or lost equipment is not allowed unless authorized in writing by the Race Committee. Requests for substitution shall be made to the committee at the first reasonable opportunity, which may be after the race.

13. EQUIPMENT AND MEASUREMENT CHECKS

- 13.1. A boat or equipment may be inspected at any time for compliance with the class rules, notice of race and sailing instructions.
- 13.2. [DP] When instructed by a race official on the water, a boat shall proceed to a designated area for inspection.

14. OFFICIAL VESSELS

- 14.1. Official vessels will be identified by display of a white flag with black letters 'RC' or red 'MEDIA' or 'M'.

15. TRASH DISPOSAL

- 15.1. Trash may be placed aboard official or support person vessels.

16. RISK STATEMENT

- 16.1. RRS 3 states: 'The responsibility for a boat's decision to participate in a race or to continue to race is hers alone.' By participating in this event each competitor agrees and acknowledges that sailing is a potentially dangerous activity with inherent risks. These risks include strong winds and rough seas, sudden changes in weather, failure of equipment, boat handling errors, poor seamanship by other boats, loss of balance on an unstable platform and fatigue resulting in increased risk of injury. **Inherent in the sport of sailing is the risk of permanent, catastrophic injury or death by drowning, trauma, hypothermia or other causes.**
- 16.2. All participants are required to comply with any safety provisions as mandated under the Racing Rules of Sailing, the Australian Sailing Special Regulations 1 for Racing Boats, and any Class Rules that may apply. The Squadron encourages and supports competitors who believe it is appropriate to exceed the above requirements (such as the wearing of helmets, body armour, impact vests, etc.) if they or their guardian believe that conditions and their personal circumstances warrant. All competitor's attention is drawn to the Risk Statement - Section 16.1 of the Sailing Instructions.

17. INSURANCE

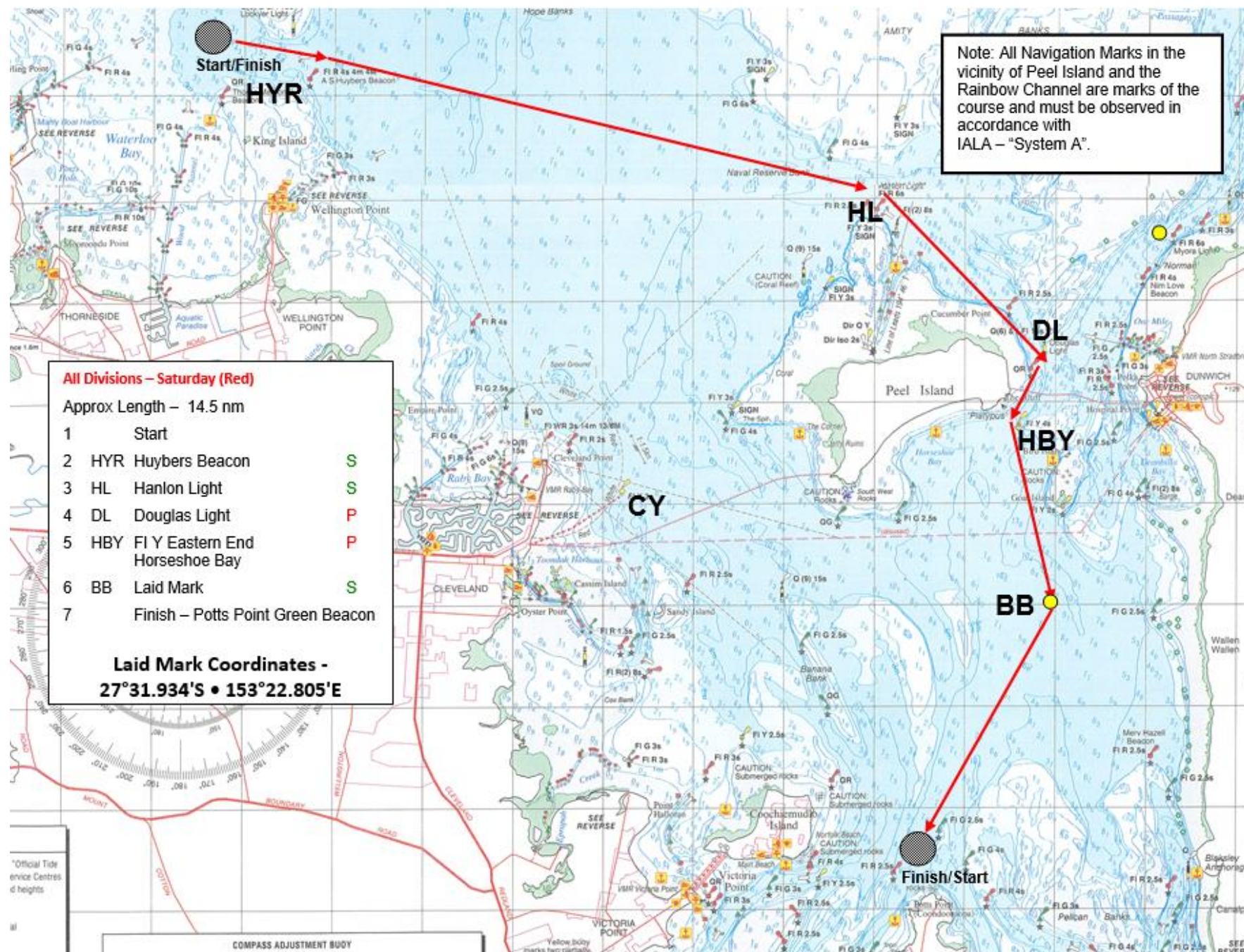
- 17.1. Each participating boat shall be insured with valid third-party liability insurance with a minimum cover of \$10,000,000AUD per incident or the equivalent.

SI ATTACHMENT A – Manly Harbour 6 knot zone

Description of area	Speed	Ships affected	Date gazetted
(e) All creeks and waterways flowing into the Brisbane River (except the Bremer River)	6 knots	All	
(f) The waters described as: <ul style="list-style-type: none"> commencing at the waterline of the eastern bank nearest to location 27°35.630'S, 152°51.441'E then south along the waterline of the eastern bank upstream to a location on the waterline nearest to 27°35.739'S, 152°51.431'E then west across the river to a point on the waterline of the western bank nearest to location 27°35.739'S, 152°51.338'E then north along the waterline of the western bank to a point on the waterline nearest to 27°35.630'S, 152°51.344'E then easterly across Brisbane River to the point of commencement. 	6 knots	All, excluding ships operated by Maritime Safety Queensland, Queensland Police Service and Queensland Boating and Fisheries Patrol	16 February 2018
Manly Harbour The waters of the Manly Harbour bounded by an imaginary line: <ul style="list-style-type: none"> from a position on the northern breakwater latitude 27°27.042'S, longitude 153°11.520'E then in a north easterly direction to No. 7 starboard lateral beacon latitude 27°26.9523'S, longitude 153°11.7462'E then across the channel to No. 8 port lateral beacon latitude 27°26.9838'S, longitude 153°11.7637'E then continuing in a south westerly direction to a position on the top of the southern breakwater latitude 27°27.112'S, longitude 153°11.545'E then back in a northerly direction across the channel to the initial position at the northern breakwater. The waters marked in red as shown on Map S8sp-29-1.	6 knots	All	28 October 2022
Moreton Bay The waters of the Tangalooma Wrecks anchorage, Moreton Bay between the wrecks and the western foreshores of Moreton Island.	6 knots	All	21 May 2004
Cabbage Tree Creek Upstream of a line extending approximately south-south-easterly from the jetty known as Baxter's Jetty.	6 knots	All	21 May 2004
Bald Hills Creek	6 knots	8.0m in length & over	21 May 2004
Caboolture River	6 knots	8.0m in length & over	21 May 2004
Pine River North and South Pine Rivers	6 knots	8.0m in length & over	21 May 2004
Tingalpa Creek, Ransome to Capalaba All waters of the Tingalpa Creek extending from Molle Road in position latitude 27° 29.773'S, longitude 153° 11.223'E heading upstream to the Tingalpa Reservoir entrance in position latitude 27° 31.695'S, longitude 153° 10.824'E. The waters marked in red as shown on Map S8sp-26-1.	6 knots	All	28 October 2022
Lake Somerset The waters of Lake Somerset, Brisbane <i>Except</i> The waters of the northern parts of Lake Somerset at approximate latitude 27°00.227's, longitude 152°33.912'e and extending across to the eastern side of Lake Somerset at approximate latitude 27°00.342's, longitude 152°34.356'e.	Unlimited 6 knots	All All	15 February 2008 6 May 2014
Lake Moogerah The waters of Lake Moogerah, Brisbane <i>Except</i> The southern waters indicated in the below two zones:	Unlimited	All	21 May 2004

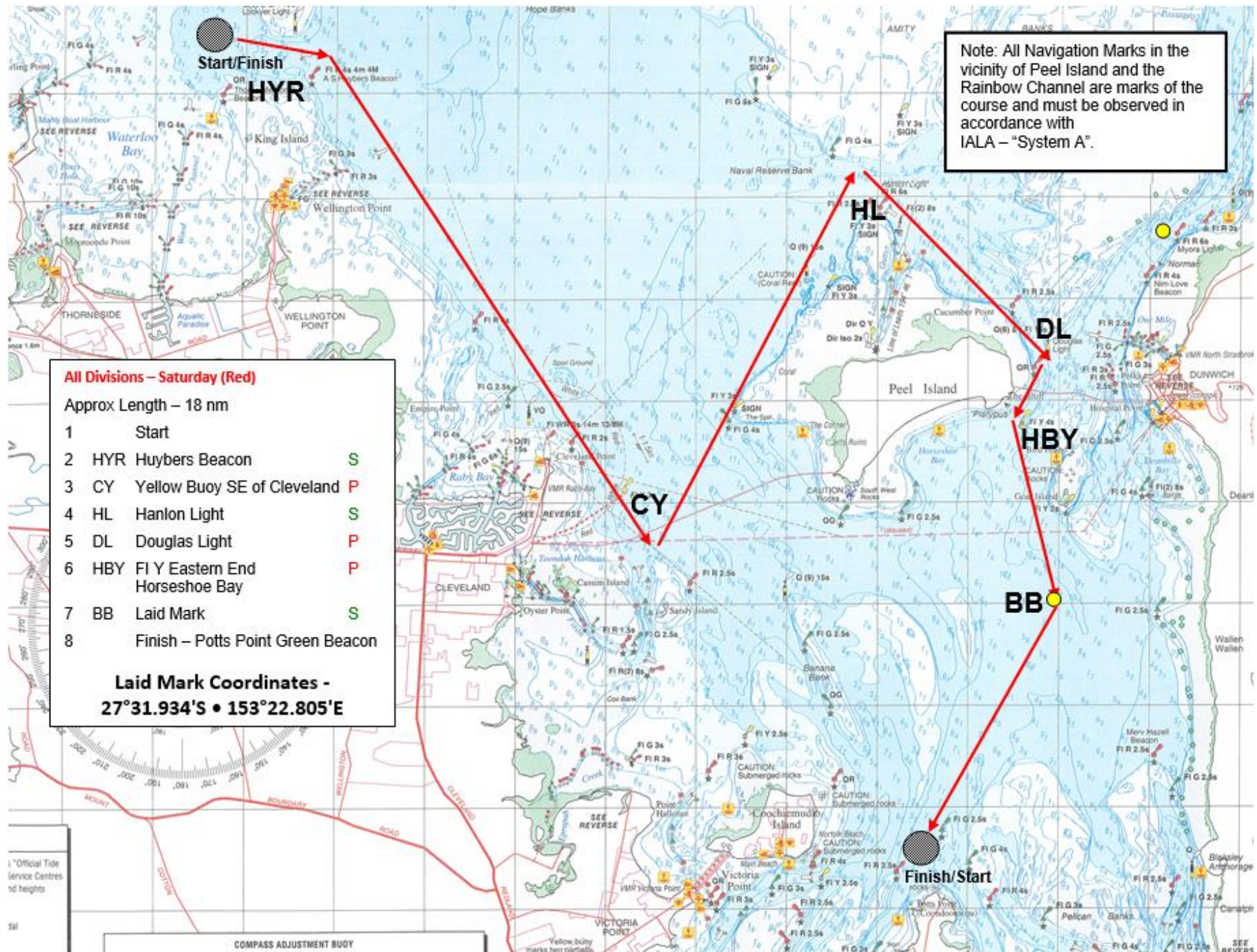
This document is uncontrolled when printed or downloaded. Always refer to the on-line version for up-to-date information

Course 1A: MANLY TO CANAIPA



Note: charts illustrated in these sailing instructions show the general racing area – **Not for Navigation**

Course 1B: MANLY TO CANAIPA



Course 2: CANAIPA TO MANLY

