



---

# **RQYS Yacht & Trailerable Winter Series 2026**

## **SAILING INSTRUCTIONS (SI)**

12/04/2026

24/05/2026

14/06/2026

05/07/2026

19/07/2026

Organising Authority

**ROYAL QUEENSLAND YACHT SQUADRON LTD**

578 Royal Esplanade, Manly, QLD 4179

The notation '[NP]' in a rule of the sailing instructions (SIs) means that a boat may not protest another boat for breaking that rule. This changes RRS 60.1.

The notation '[DP]' in a rule of the sailing instructions (SI's) means that a protest committee can award a penalty in accordance with the RRS and World Sailing guidelines (including no penalty) at their discretion. This changes RRS 60.5 and RRS 64.

The notation '[SP]' in a rule of the NoR and/or SIs means that a standard penalty may be applied by the race committee without a hearing per RRS 60.5(b)(3).

## 1. RULES

- 1.1 The event is governed by the rules as defined in The Racing Rules of Sailing.
- 1.2 RRS Appendix A 5.3 will Apply.
- 1.3 Appendix T – Arbitration will apply.
- 1.4 The Australian Sailing prescriptions and special regulations of Australian Sailing (AS) Part 1 Category 5 will apply.
  - 1.4 (a) All entries shall supply the Sailing Office with a valid SR Category 5 Safety Equipment Audit which has been endorsed by a certified auditor. See SI Attachment B.
- 1.5 The [OMR rules](#) will apply.
- 1.6 The current [IRC Rules](#) shall apply.
- 1.7 The IRC rule 22.4.2 shall not apply. There shall be no limitation on Crew Number or weight except as required for boats rated as One-Designs which shall comply with IRC rule 22.4.1
- 1.8 The Supplementary Sailing Instructions of the [RQYS Yacht Racing Course Book](#) (page 6) shall apply for courses conducted from that Course Book. These apply in relation to Course Reversals, use of X Marks, and moving of the Starting Area.
- 1.9 RRS 90.3(e) (Time Limit for changes to race scores) shall apply & is amended to read "... more than 72 hours after...".
  - 1.9 (a) Score reviews can be submitted at the RQYS Sailing Office or online at: <https://form.jotform.com/232208538874059>
- 1.10 [SP] The Skipper from each boat MUST fill in the [SailSys "Crew List"](#) (or contact the Sailing Office) for all sailors onboard competing in each race, prior to the start of the race.
  - 1.10 (a) Boats which are found to fail to provide a full crew list shall be given 1 warning, further infringements will result in a two (2) point penalty for that race.
  - 1.10 (b) See how to create your crew list [HERE](#)

## 2. SCHEDULE

- 2.1. Racing will be in accordance with the [Sailing Program](#) published online (<https://www.rqys.com.au/sailing-calendar/>).
- 2.2.

RACE	FIRST WARNING SIGNAL
Division 1 – Monohull	Not Before 1045 hours
Division 2 – Multihull	Not Before 1035 hours

- 2.3. No warning signal will be made after 1400 hrs.
- 2.4. A daily presentation shall be held at the conclusion of each days racing, the presentation shall be held in the RQYS bar at a time confirmed via [WhatsApp](#).

## 3. SIGNALS MADE ASHORE

- 3.1. Signals made ashore will be displayed at the official flagpole located at the top of the Eastern Gangway of the Bill Kirby Docks.
- 3.2. When flag AP is displayed ashore, '1 minute' is replaced with 'not less than 60 minutes' in Race Signals AP.

#### 4. CLASS FLAGS

4.1. The class flags are:

FLEET	FLAG
Division 1 – Monohull	Numeral Pennant 1
Division 2 – Multihull	Numeral Pennant 2
All Divisions	Code Flag K

#### 5. COURSES

- 5.1. The courses to be sailed shall be from the [RQYS Yacht Course Book Version 2](#).
- 5.2. No later than the warning signal, the race committee signal vessel will display the approximate compass bearing of the first leg.

#### 6. MARKS

- 6.1. Designated fixed marks are described in the [RQYS Yacht Course Book Version 2](#).
- 6.2. Laid marks for Passage Races shall be an orange inflatable mark.
- 6.3. The Start / Finish marks shall be orange teardrops.

#### 7. THE START

- 7.1. The starting line shall be between a staff displaying an orange flag on the start vessel at the starboard end and the course side of the port-end starting mark.
- 7.2. Boats whose warning signal has not been made shall avoid the starting area during the starting sequence for other yachts or races.
- 7.3. A boat that does not start within ten (10) minutes after her starting signal will be scored Did Not Start without a hearing. This changes RRS A5.1 and RRS A5.2.

#### 8. CHANGE OF THE NEXT LEG OF THE COURSE

- 8.1. To change the next leg of the course, the race committee will move the original mark or the finishing line to a new position.

#### 9. THE FINISH

- 9.1. The finishing line shall be between a staff displaying a blue flag on the finishing boat and the course side of the finishing mark.
- 9.2. When there is no race committee vessel on station at the finish the alternate finish line will be reached when the red outer channel mark (No. 2) of the Manly Harbour entrance leads bears true north and lies within 100 meters. In this case, yachts are required to declare to the Sailing Office their finish time. Finish declarations shall be lodged at the Sailing Office in person or by phone ([sailing@rqys.com.au](mailto:sailing@rqys.com.au) or 07 3396 8666) within 2 hours following the completion of the race and shall include the name of the yacht, skipper and finishing time to Eastern Standard Time.

## **10. TIME LIMIT**

10.1. The time limit for all boats to be finished is 1600 hours.

## **11. HEARING REQUESTS**

11.1. For each division, the protest time limit is 90 minutes after the last boat in that division finishes the last race of the day or the race committee signals no more racing today, whichever is later. The time will be posted on the official notice board.

11.2. Hearing request forms are available from and shall be lodged with the race office at <https://www.rqys.com.au/documents-auditing/> or hard copies can be requested from the RQYS Sailing Office (adjacent to Main Rigging Lawn).

11.3. Notices will be posted no later than 30 minutes after the protest time limit to inform competitors of hearings in which they are parties or named as witnesses. Hearings will be held at a time and place advised on the hearing notice.

## **12. [NP][DP] SAFETY REGULATIONS**

12.1. All skippers shall SIGN ON prior to the first warning signal each day with the start boat on VHF Ch 72. Boats failing to sign on may be scored DNC without a hearing. This changes RRS 60.5(b), RRS A4 and RRS A5.

12.2. If the race committee displays code flag L alternate VHF channel 77 may be used. This changes SI 12.1

12.3. Boats shall be considered signed off upon crossing the finish line.

12.4. A boat that retires from a race shall notify the race committee at the first reasonable opportunity.

## **13. [NP][DP] AQUATIC EVENT CONDITIONS**

13.1. Attention is drawn to the following aquatic event conditions:

13.2.1. Participants / safety ships are not to impede commercial shipping.

13.2.2. All participating ships and safety ships are not to impede power driven vessels traversing Manly Boat Harbour and associated channels.

13.2.3. All participating ships and safety ships are to be briefed on the gazetted speed limit in Manly Boat Harbour. See page 10 from the Schedule of Speed Limits In QLD in SI Attachment C.

13.2.4. All participating ships and safety ships equipped with VHF are to monitor VHF channel 12 and VHF channel 16.

13.2. The Authority Holder must ensure that ships participating in the aquatic event observe a 20-metre exclusion zone around all Aids to Navigation.

#### **14. REPLACEMENT OF EQUIPMENT**

- 14.1. Boats intending to race with a sail number other than that stipulated on their entry shall advise the sailing office in writing of the change, prior to racing. Failure to comply shall result in the boat being scored DNC for all races on that day. This changes RRS 60.5(b), RRS A4 and RRS A5.

#### **15. EQUIPMENT AND MEASUREMENT CHECKS**

- 15.1. A boat or equipment may be inspected at any time for compliance with the class rules, notice of race and sailing instructions.
- 15.2. [DP] When instructed by a race official on the water, a boat shall proceed to a designated area for inspection.

#### **16. OFFICIAL VESSELS**

- 16.1. Official vessels will be identified by displaying a black & white 'RC' or Red & White 'MEDIA' flag.

#### **17. TRASH DISPOSAL**

- 17.1. Trash may be placed aboard official or support person vessels.

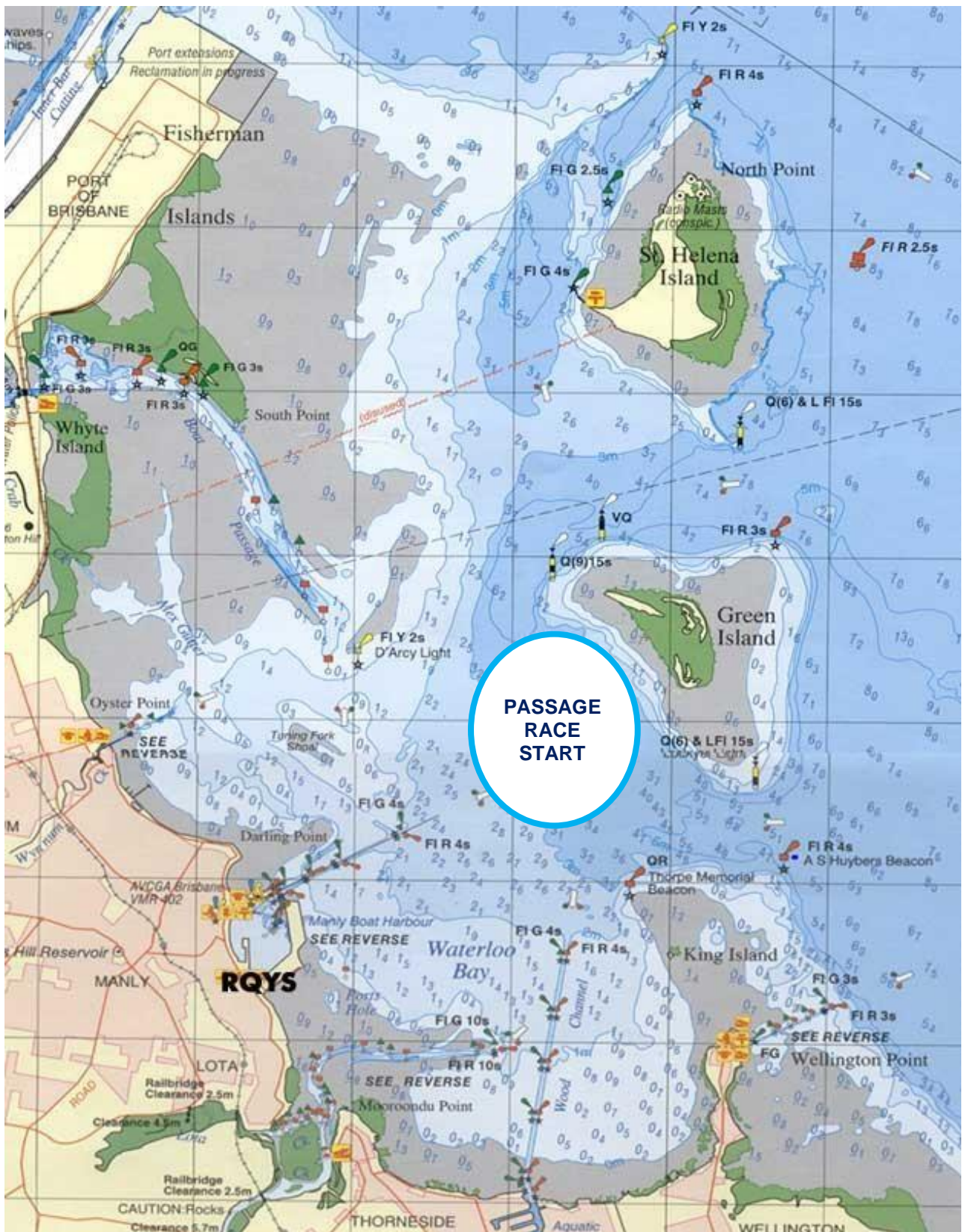
#### **18. RISK STATEMENT**

- 18.1. RRS 3 states: 'The responsibility for a boat's decision to participate in a race or to continue to race is hers alone.' By participating in this event each competitor agrees and acknowledges that sailing is a potentially dangerous activity with inherent risks. These risks include strong winds and rough seas, sudden changes in weather, failure of equipment, boat handling errors, poor seamanship by other boats, loss of balance on an unstable platform and fatigue resulting in increased risk of injury. **Inherent in the sport of sailing is the risk of permanent, catastrophic injury or death by drowning, trauma, hypothermia or other causes.**
- 18.2. All participants are required to comply with any safety provisions as mandated under the Racing Rules of Sailing, the Australian Sailing Special Part 1 for Racing Boats, and any Class Rules that may apply. The Squadron encourages and supports competitors who believe it is appropriate to exceed the above requirements (such as the wearing of helmets, body armour, impact vests, etc.) if they or their guardian believe that conditions and their personal circumstances warrant. All competitor's attention is drawn to the Risk Statement - Section 18.1 of the Sailing Instructions.

#### **19. INSURANCE**

- 19.1. Each participating boat shall be insured with valid third-party liability insurance with a minimum cover of \$10,000,000AUD per incident or the equivalent.

# SI ATTACHMENT A



## SI ATTACHMENT B

### SAFETY FIRST

As part of a national incentive by Australian Sailing, RQYS has adopted 'Whole of Fleet' Safety Audits appropriate to your race category.

#### ***So why extend equipment audits to all of our fleet?***

The simple answer is compliance and good safety practice within the club. We have a Duty of Care to those participating in RQYS events and this extends beyond RQYS responsibility to boat owners and skippers.

Nationally, self audits have not, in the majority of cases, been completed to a satisfactory standard and it is our intention to engender into our sailors a culture of safety which benefits us all.

Chris Morgan, a division yacht owner and Queensland's Senior Sailing Australia Equipment Safety Auditor, has agreed to undertake the management of this program alongside the sailing office.

- All yacht owners and off the beach boats will be required to complete the appropriate Sailing Australia category form applicable to the club racing they intend to enter.  
[AS SR Safety Equipment Checklists](#)
- Owners will then be required to contact an Australian Sailing approved auditor(s) to arrange an inspection and sign off.

This is a compliance required under RRS 75 "entering an event".

Below is a list of our current RQYS auditors. If you are interested in becoming an auditor please contact Chris Morgan.

#### **RQYS AUDITORS for Division Yachts**

<b>Senior National Equipment Auditor</b>		
Chris Morgan	0418 767 591	<a href="mailto:chrismorgan5@outlook.com">chrismorgan5@outlook.com</a>
<b>National Equipment Auditor (Cat 1 – 7)</b>		
Genevieve Warlow	0438 159 089	<a href="mailto:gwarlow@gmail.com">gwarlow@gmail.com</a>
Peter Kruger	0402 295 283	<a href="mailto:p.kruger1@uq.edu.au">p.kruger1@uq.edu.au</a>
Ian Davis	0419 799 958	<a href="mailto:hoodsailmakers@gmail.com">hoodsailmakers@gmail.com</a>
Paul King	0409 725 488	<a href="mailto:paulkingmwa@gmail.com">paulkingmwa@gmail.com</a>
Dave Richards		<a href="mailto:davidrichards30.dr@gmail.com">davidrichards30.dr@gmail.com</a>
Helen Warneke	0417 074 990	<a href="mailto:helen.warneke@cofcqld.com.au">helen.warneke@cofcqld.com.au</a>
Harley Cowlshaw	0437 729 642	<a href="mailto:ncowlsh@bigpond.net.au">ncowlsh@bigpond.net.au</a>
<b>Club Equipment Auditor (Cat 3 – 7)</b>		
Anton Prange	0410 696 578	<a href="mailto:anton@yachtshare.com.au">anton@yachtshare.com.au</a>
Hilary Arthure	0419 774 092	<a href="mailto:hilary.arthure@bigpond.com">hilary.arthure@bigpond.com</a>
Phil Kirby	0402 005 921	<a href="mailto:kirby.pe@hotmail.com">kirby.pe@hotmail.com</a>
John Connelly	0432649187	<a href="mailto:johnconnelly@yoti.com.au">johnconnelly@yoti.com.au</a>

## SI Attachment C

Description of area	Speed	Ships affected	Date gazetted
(e) All creeks and waterways flowing into the Brisbane River (except the Bremer River)	6 knots	All	16 February 2018
(f) The waters described as: <ul style="list-style-type: none"> <li>commencing at the waterline of the eastern bank nearest to location 27°35.630'S, 152°51.441'E</li> <li>then south along the waterline of the eastern bank upstream to a location on the waterline nearest to 27°35.739'S, 152°51.431'E</li> <li>then west across the river to a point on the waterline of the western bank nearest to location 27°35.739'S, 152°51.338'E</li> <li>then north along the waterline of the western bank to a point on the waterline nearest to 27°35.630'S, 152°51.344'E</li> <li>then easterly across Brisbane River to the point of commencement.</li> </ul>	6 knots	All, excluding ships operated by Maritime Safety Queensland, Queensland Police Service and Queensland Boating and Fisheries Patrol	
<b>Manly Harbour</b> The waters of the Manly Harbour bounded by an imaginary line: <ul style="list-style-type: none"> <li>from a position on the northern breakwater latitude 27°27.042'S, longitude 153°11.520'E</li> <li>then in a north easterly direction to No. 7 starboard lateral beacon latitude 27°26.9523'S, longitude 153°11.7462'E</li> <li>then across the channel to No. 8 port lateral beacon latitude 27°26.9838'S, longitude 153°11.7637'E</li> <li>then continuing in a south westerly direction to a position on the top of the southern breakwater latitude 27°27.112'S, longitude 153°11.545'E</li> <li>then back in a northerly direction across the channel to the initial position at the northern breakwater.</li> </ul> The waters marked in red as shown on Map S8sp-29-1.	6 knots	All	28 October 2022
<b>Moreton Bay</b> The waters of the Tangalooma Wrecks anchorage, Moreton Bay between the wrecks and the western foreshores of Moreton Island.	6 knots	All	21 May 2004
<b>Cabbage Tree Creek</b> Upstream of a line extending approximately south-south-easterly from the jetty known as Baxter's Jetty.	6 knots	All	21 May 2004
<b>Bald Hills Creek</b>	6 knots	8.0m in length & over	21 May 2004
<b>Caboolture River</b>	6 knots	8.0m in length & over	21 May 2004
<b>Pine River</b> North and South Pine Rivers	6 knots	8.0m in length & over	21 May 2004
<b>Tingalpa Creek, Ransome to Capalaba</b> All waters of the Tingalpa Creek extending from Molle Road in position latitude 27° 29.773'S, longitude 153° 11.223'E heading upstream to the Tingalpa Reservoir entrance in position latitude 27° 31.695'S, longitude 153° 10.824'E. The waters marked in red as shown on Map S8sp-26-1.	6 knots	All	28 October 2022
<b>Lake Somerset</b> The waters of Lake Somerset, Brisbane <i>Except</i> The waters of the northern parts of Lake Somerset at approximate latitude 27°00.227's, longitude 152°33.912'e and extending across to the eastern side of Lake Somerset at approximate latitude 27°00.342's, longitude 152°34.356'e.	Unlimited  6 knots	All  All	15 February 2008  6 May 2014
<b>Lake Moogerah</b> The waters of Lake Moogerah, Brisbane <i>Except</i> The southern waters indicated in the below two zones:	Unlimited	All	21 May 2004

This document is uncontrolled when printed or downloaded. Always refer to the on-line version for up-to-date information