



RQYS Yacht & Trailerable Winter Series 2026

NOTICE OF RACE (NoR)

12/04/2026

24/05/2026

14/06/2026

06/07/2026

19/07/2026

ORGANISING AUTHORITY

ROYAL QUEENSLAND YACHT SQUADRON LTD
578 Royal Esplanade, Manly 4179, QLD, Australia

The notation [NP] in a rule of the sailing instructions (SIs) means that a boat may not protest another boat for breaking that rule. This changes RRS 60.1.

The notation [DP] in a rule of the sailing instructions (SI's) means that a protest committee can award a penalty in accordance with the RRS and World Sailing guidelines (including no penalty) at their discretion. This changes RRS 60.5 and RRS 64.

The notation [SP] in a rule of the NoR and/or SIs means that a standard penalty may be applied by the race committee without a hearing per RRS60.5(b)(3).

1. RULES

- 1.1 The event is governed by the rules as defined in The Racing Rules of Sailing.
- 1.2 RRS Appendix A 5.3 will Apply.
- 1.3 Appendix T – Arbitration will apply.
- 1.4 The Australian Sailing prescriptions and special regulations of Australian Sailing (AS) Part 1 Category 5 will apply.
 - 1.4 (a) All entries shall supply the Sailing Office with a valid SR Category 5 Safety Equipment Audit which has been endorsed by a certified auditor. See SI Attachment B.
- 1.5 The [OMR rules](#) will apply.
- 1.6 The current [IRC Rules](#) shall apply.
- 1.7 The IRC rule 22.4.2 shall not apply. There shall be no limitation on Crew Number or weight except as required for boats rated as One-Designs which shall comply with IRC rule 22.4.1
- 1.8 The Supplementary Sailing Instructions of the [RQYS Yacht Racing Course Book](#) (page 5) shall apply for courses conducted from that Course Book. These apply in relation to Course Reversals, use of X Marks, and moving of the Starting Area.
- 1.9 RRS 90.3(e) (Time Limit for changes to race scores) shall apply & is amended to read "... more than 72 hours after...".
 - 1.9 (a) Score reviews can be submitted at the RQYS Sailing Office or online at: <https://www.rqys.com.au/rqys-club-yacht-trailerable-winter-series-2026/>
- 1.10 [SP]The Skipper from each boat MUST fill in the [SailSys "Crew List"](#) (or contact the Sailing Office) for all sailors onboard competing in each race, prior to the start of the race.
 - 1.10 (a) Boats which are found to fail to provide a full crew list shall be given 1 warning, further infringements will result in a two (2) point penalty for that race.
 - See how to create your crew list [HERE](#)

2. CODE OF CONDUCT

- 2.1 [DP] Competitors and support persons shall comply with reasonable requests from race officials.
- 2.2 [DP] Competitors and support persons shall handle any equipment or place advertising provided by the organizing authority with care, seamanship, in accordance with any instructions for its use and without interfering with its functionality.
- 2.3 Competitors must follow RQYS Club Policies (<https://www.rqys.com.au/membership/rules-and-regulations/>)

3. CHANGES TO RACE DOCUMENTS & SCHEDULE

- 3.1 Any change to the race documents will be posted before 0900 on the day it will take effect, except that any change to the schedule of races will be posted by 2000 on the day before it will take effect.

4. SAILING INSTRUCTIONS

- 4.1 The sailing instructions will be available after 1600 on 23rd April 2026 at <https://www.rqys.com.au/rqys-club-yacht-trailerable-winter-series-2026/>.

5. COMMUNICATION

- 5.1 The official notice board (ONB) is located at <https://www.rqys.com.au/rqys-club-yacht-trailerable-winter-series-2026/>.
- 5.2 Secondary to the Official noticeboard “instant messaging” system WhatsApp may be used to notify skippers of timely information, confirmation of days course, Protest Time limit etc. Join the group at: <https://chat.whatsapp.com/HizbVHcOi3qGpyrQ1PS2Do>
- 5.3 The race office is located at The RQYS Sailing Office located adjacent to the Main Rigging Lawn, telephone 3396 8666, email sailing@rqys.com.au .
- 5.4 [DP] All boats shall carry a VHF radio capable of communicating on the [VHF maritime mobile band](#).
- 5.5 On the water, the race committee intends to monitor and communicate with competitors on VHF radio Channel 72.
- 5.6 If the race committee displays code flag L alternate VHF channel 77 may be used. This changes NoR 5.5
- 5.7 [DP] While racing, except in an emergency, a boat shall not make voice or data transmissions and shall not receive voice or data communication that is not available to all boats.

6. ELIGIBILITY AND ENTRY

- 6.1 Seasons entry is open to Yachts & Trailerable boats owned by financial members of the Royal Queensland Yacht Squadron.
- 6.2 All persons on board a boat while racing shall be members of a Club affiliated to Australian Sailing and have an Australian Sailing number, or hold a valid Sail Pass, or if an international competitor, be a member of club affiliated to a World Sailing recognised Member National Authority.
- 6.3 Casual Entries can be lodged in advance by use of the SailSys entry system, casual entry must be lodged before the first warning signal of the day.
- 6.4 Casual entrants are required to be a member of Australian Sailing by having membership with an Australian Sailing affiliated club, or by obtaining an RQYS Sail Pass. See RQYS policy page (<https://www.rqys.com.au/policiesanddocuments/>) for further rules regarding day-pass membership.
- 6.5 Boats may enter the event by registering online at <https://www.rqys.com.au/rqys-club-yacht-trailerable-winter-series-2026/>.
- 6.6 To be considered an entry in the event, a boat shall complete all registration requirements and pay all fees.
- 6.7 Late entries may be accepted at the discretion of the Organising Authority.

7. DIVISIONS

- 7.1 Division allocations:
 - 7.1 (a) Division 1 – Monohull boats.
 - 7.1 (b) Division 2 – Multihull boats.
- 7.2 Divisions may be modified or combined based on number of entries and/or the discretion of the Race Committee.
- 7.3 The Race Committee may reallocate a boats division in the spirit of providing the best overall racing experience.

8. FEES

- 8.1 Fees shall be:
 - RQYS Members Series Entry \$150.00
 - RQYS Members Casual Entry \$35.00

 - Non-Members Casual Entry \$40.00
- 8.2 Any Refunds will be as per the RQYS Sailing Refunds Policies (<https://www.rqys.com.au/membership/rules-and-regulations/>).

9. INDICATIVE SCHEDULE

- 9.1 Racing will be in accordance with the [Sailing Program](https://www.rqys.com.au/sailing-calendar/) published online (<https://www.rqys.com.au/sailing-calendar/>).
- 9.2 First Warning Shall be:
- 9.2 (a) Division 1: 1045 hours.
- 9.2 (b) Division 2: 1035 hours.
- 9.3 A daily presentation shall be held at the conclusion of each days racing, the presentation shall be held in the RQYS bar at a time confirmed via WhatsApp (NoR 5.2).

10. EQUIPMENT INSPECTION

- 10.1 Each IRC/OMR boat shall produce or verify the existence of a valid rating certificate.
- 10.2 Boats may be inspected at any time.

11. VENUE

- 11.1 The location of the racing area shall be as displayed in the [RQYS Yacht Course Book](#).
- 11.2 NoR Attachment A shows the plan of the event venue.

12. COURSES

- 12.1 The courses to be sailed shall be from the [RQYS Yacht Course Book](#).

13. PENALTY SYSTEM

- 13.1 RRS 44.1 is changed so that the Two-Turns Penalty is replaced by the One-Turn Penalty.

14. SCORING

- 14.1 One (1) race is required to be completed to constitute a series.
- 14.2 (a) When fewer than five (5) races have been completed, a boat's series score will be the total of her race scores.
- 14.2 (b) When five (5) or more races have been completed, a boat's series score will be the total of her race scores excluding her worst score.
- Average Points:
- 14.2 (c) Average points may be requested for series entries when racing is missed due to competing at a National or International regatta or a World Sailing ranked event in the competitor's class, or in any other circumstance approved by the Sailing Committee.
- 14.2 (d) These points shall be awarded for no more than one (1) day in a season.
- 14.2 (e) To receive average points, sailors must request average points in advance by emailing sailing@rqys.com.au and have this approved by the Sailing Committee BEFORE the missed day's racing.
- 14.2 (f) Average Points will be awarded as per amended RRS A9 (a).

15. HANDICAPS

- 15.1 PHS Handicaps shall be allocated by the RQYS Handicap Committee for a vessels first race in the series, Subsequent races will be adjusted by the SailSys PHS system. Changes to a boat's sailing configuration or equipment shall be advised to the RQYS Sailing Office prior to the next race in which it intends to compete.
- 12.1.1 For further information regarding handicaps and scoring at <https://www.sailsys.com.au>
- 12.1.2 Request for review of handicap can be completed at <https://form.jotform.com/232208763124047> Request for reviews must be submitted 48 hrs before the first warning of the first race in the series.
- 15.2 IRC ratings shall be as per the online TCC Listings [available here](#) unless a valid certificate is provided to prove otherwise.
- 15.3 CBH Ratings shall be as per Australian Sailing CBH ratings report 10th March 2026 as of the vessel's first race [available here](#).
- 15.4 Yachts racing in the OMR divisions will not receive results without a valid rating with their relevant organisation. Any changes in rating shall be forwarded to the RQYS Sailing Office for the rating to be adjusted.

16. BERTHING

- 16.1 [NP] No vessels shall berth or rig on the RQYS Fuel Dock unless re-fuelling or approval obtained from the RQYS Sailing or Marina Office.
- 16.2 For RQYS Marina Berths or use of the VIP Docks, please contact the RQYS Marina Office on 3396 8666 during business hours.

17. DIVING EQUIPMENT AND PLASTIC POOLS

- 17.1 Underwater breathing apparatus and plastic pools or their equivalent shall not be used around keelboats between the preparatory signal of the first race and the end of the event.

18. DATA PROTECTION

- 18.1 By participating in an event, a competitor automatically grants to the Organising Authority and the sponsors of the event, the right in perpetuity, to make, use and show, from time to time and at their discretion, any motion pictures, still pictures and live, taped or film television and other reproductions of him/her during the period of the competition for said event in which the competitor participated and in all material related to the said event without compensation.

19. RISK STATEMENT

- 19.1 RRS 3 states: 'The responsibility for a boat's decision to participate in a race or to continue to race is hers alone.' By participating in this event each competitor agrees and acknowledges that sailing is a potentially dangerous activity with inherent risks. These risks include strong winds and rough seas, sudden changes in weather, failure of equipment, boat handling errors, poor seamanship by other boats, loss of balance on an unstable platform and fatigue resulting in increased risk of injury. **Inherent in the sport of sailing is the risk of permanent, catastrophic injury or death by drowning, trauma, hypothermia or other causes.**
- 19.2 All participants are required to comply with any safety provisions as mandated under the Racing Rules of Sailing, the Australian Sailing Special Regulations Part 1 for Racing Boats, and any Class Rules that may apply. The Squadron encourages and supports competitors who believe it is appropriate to exceed the above requirements (such as the wearing of helmets, body armour, impact vests, etc.) if they or their guardian believe that conditions and their personal circumstances warrant. All competitor's attention is drawn to the Risk Statement - Section 19.1 of the Notice of Race.

20. INSURANCE

- 20.1 Each participating boat shall be insured with valid third-party liability insurance with a minimum cover of \$10,000,000AUD per incident or the equivalent.

21. PRIZES

21.1 Prizes will be awarded to:

21.1 (a) Series overall Monohull 1st, 2nd & 3rd PHS for divisions with five (5) or more entries.

21.1 (b) Series overall Monohull 1st, 2nd & 3rd IRC for divisions with five (5) or more entries.

21.1 (c) Series overall Monohull 1st, 2nd & 3rd CBH for divisions with five (5) or more entries.

21.1 (d) Series overall Multihull 1st, 2nd & 3rd PHS for divisions with three (3) or more entries.

21.1 (e) Series overall 1st, 2nd & 3rd OMR for divisions with three (3) or more entries.

21.2 Other prizes may be awarded at the discretion of the organising authority.

22. FURTHER INFORMATION

22.1 For further information please contact:

RQYS Sailing: 07 3396 8666 / sailing@rqys.com.au

578 Royal Esplanade MANLY QLD 4179 AUS

www.rqys.com.au

Attachment A – Location Information

EMERGENCY CONTACTS

Emergencies	000	
RQYS Sailing Manager	0424 101 732	
Royal Queensland Yacht Squadron	(07) 3396 8666	578 Royal Esplanade, Manly QLD
Manly Coast Guard	(07) 3396 5911	40 Trafalgar St, Manly QLD
Wynnum Police	(07) 3308 8100	82 Pine St, Wynnum QLD
Wynnum Fire & Rescue	(07) 3396 3297	2006 Wynnum Rd, Wynnum West
Brisbane Water Police	(07) 3895 0333	2 Howard Smith Dr, Port of Brisbane

Location, access & communication of Next of Kin Details

Sailing Office & SailSys Databases including information gathered from regatta registrations and/or indemnity forms.

Location of Nearest Emergency Medical Facilities

Redlands Hospital	(07) 3488 3111	21 Weippin St, Cleveland QLD
-------------------	----------------	------------------------------

Location of Nearest Medical Facilities

Wynnum Family Health Service	(07) 3893 0093	116 Edith St, Wynnum QLD
Doctors on Manly Road	(07) 3348 6111	12 Manly Rd, Manly QLD
Silky Oaks Medical Practice	(07) 3396 9855	218 Manly Rd, Manly QLD
Dental On Cambridge	(07) 3348 6661	4/99 Cambridge Parade, Manly QLD

LOCAL SERVICES

Sail Maker

North Sails
1/264 Tingal Rd, Wynnum QLD
3396 5822

Hood Sails
181 Wynnum Esplanade, Wynnum QLD
0419 799 958

Ullman Sails
112 Glenora St, Wynnum QLD
(07) 3348 7245

Chandlery

Muir Marine
453 Esplanade, Manly QLD
(07) 3396 9988

Road Tech Marine
20 Redland Bay Rd, Capalaba QLD
(07) 3914 9543

Boat Building / Repairs – Located at RQYS

AW Marine
0409 479 204

David Glenn Boat Building
0412 878 144

JSA Marine
(07) 3348 5682

Physio

Manly Physiotherapy & Pilates
3/443 Esplanade, Manly QLD
(07) 3396 8137

Bounce Physio Birkdale
190 Birkdale Rd, Birkdale QLD
(07) 3822 2122

Pharmacy

Manly Village Pharmacy
9/222 Stratton Terrace, Manly QLD
(07) 3396 8999

Groceries

IGA Manly Village
Cnr Stratton Tce & Cambridge Parade
(07) 3396 1980

Woolworths Wynnum Central
145 Florence St, Wynnum QLD
(07) 3513 4416

Butcher

The Local Butcher
222 Stratton Terrace, Manly QLD
(07) 3396 2195

Bakery

Manly Bakery
222 Stratton Terrace, Manly QLD
(07) 3396 5688

Accommodation

[Manly Marine Cover Motel](#)
Located on the Grounds of RQYS
(07) 3348 1000

Limited Camping Facilities at RQYS
[Limited camping MAY be available](#)
(07) 3396 8666

[The Manly Hotel](#)
54 Cambridge Parade, Manly QLD
(07) 3249 5999

[Waterloo Bay Hotel](#)
75 Berrima St, Wynnum QLD
(07) 3893 2344

[Pelican's Nestle Inn](#)
149 Wynnum Esplanade, Wynnum QLD
(07) 3396 3214

[Wynnum Anchor Motel](#)
14 Adam St, Wynnum QLD
(07) 3396 3037

LOCAL WEATHER TIDE

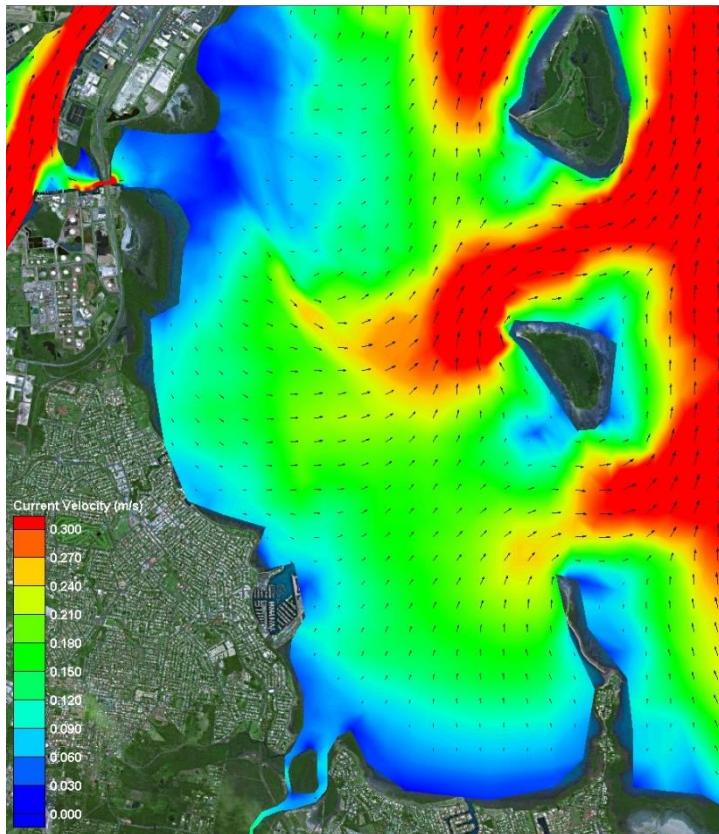
Local Weather: The RQYS Weather Station can be found at:
<https://www.rqys.com.au/weather-station/>
The Weather Station records from above the club Bay Lookout.

BOM: Radar: <http://www.bom.gov.au/products/IDR663.loop.shtml>
Marine Forecast:
<http://www.bom.gov.au/qld/forecasts/moreton-bay.shtml>

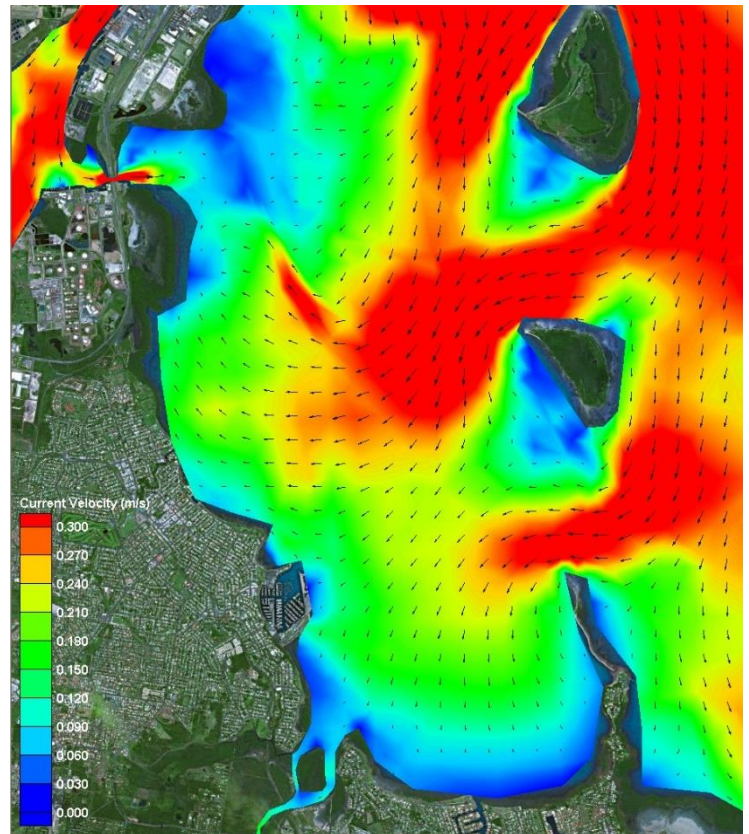
Other Popular forecasts:

Predict Wind: <https://forecast.predictwind.com/table/>
Seabreeze: <https://www.seabreeze.com.au/weather/wind-forecast/brisbane>
WillyWeather: <https://wind.willyweather.com.au/qld/brisbane/brisbane.html>

Waterloo Bay Ebb



Waterloo Bay Flood



LOCALITY		MAP GRID
578 Royal Esplanade access		A6
Eastern Beach (windsurfing)		P7-P8
Davenport Drive dog off-lead area		N10-P7
Inspiration Point lookout (fishing)		M10
Public (Harbour South) Carpark		A4
Public (South) Boatramp		B4
Public (South) Pontoon		C3

NEARBY MANLY HARBOUR VILLAGE SERVICES

900m / 5-15min

CONVENIENT RQYS & BAYSIDE MANLY ACCESS

Manly Station: 1.5km
Brisbane CBD: 30min
20min drive

BUILDINGS		MAP GRID
Australian Sailing (QLD)		C8
Bayview Lookout		P6
Boatyard [Former Marina] Office		H5
Cavill Building / FLAGS Room		C5
Clubhouse		C6
Manly Marina Cove Motel (MMCM)		A7 / B8
Marina Office		F5
Monument		K6
Sailing Academy		B5
Sailing Office		D6
Sheds / Storage Lockers		K6, J7- L7
Sports Amenities Block		F5
Trades / Services Sheds		H7
Volunteers' Sheds		D8, J5
Windsurfing Centre of Excellence		P6
Youth Squad Shed		F7

GROUNDS		MAP GRID
A Academy (Tackers) Rigging Lawn		B5
DOSA (designated smoking) areas		A6, A7
Kids' / dinghy beach		N5
1 Rigging Lawn 1 (Main / Functions)		D5
2 Rigging Lawn 2 (Marina Office)		F6
3 Rigging Lawn 3 (Youth Squad)		F7
4 Rigging Lawn 4 (Eastern grounds)		L6, M6
Regatta camping area		M7
Regatta trailer parking area		L6
Slipway 2 (Longer-term storage)		J7-L7
Windsurfing - rigging / hosedown		N7, P6

FACILITIES		MAP GRID
Dock - Bill Kirby (VIP: booking only)		D4
Dock - Fit-out work (short-term)		H4
Dock - Fuel (Diesel & PULP)		D4-E4
Fuel - Bowser (shoreside)		D5
HAZMAT Disposals shed		H5
Ramp 1 - Academy (Tackers)		C4
Ramp 2 - Main (Launch / retrieval)		E5
Ramp 3 - Slipway (Boatyard)		G5
Ramp 4 - Dinghy (Kids' beach)		N5
RQYS Boatyard		G5/6-H5/6
RQYS Sheds / Storage Lockers		K6 / J7-L7
Slipway 2 (longer-term storage)		J7-L7
Travelift (35t) & Slewing Crane		H4/H5

AMENITIES		MAP GRID
BBQs		B4, P6
Beach (RQYS - dinghy / kids')		N5
Beach (windsurfing, dogs, etc)		N10-P7
Gym		F5
Hosedown stations (boats, trailers, vehicles)		E7, F6, K7, M5
Hosedowns (personal / gear)		N7, P6
Kids' play areas		B4, N5
Laundry facilities		H5, P6
Seating / picnic areas		D5, G7, H6, N5, P6
Showers (bathrooms)		F6, H5, P6
Showers (outdoors)		F6, N7
Toilets		C5, C6, F6, H5, H7, P6

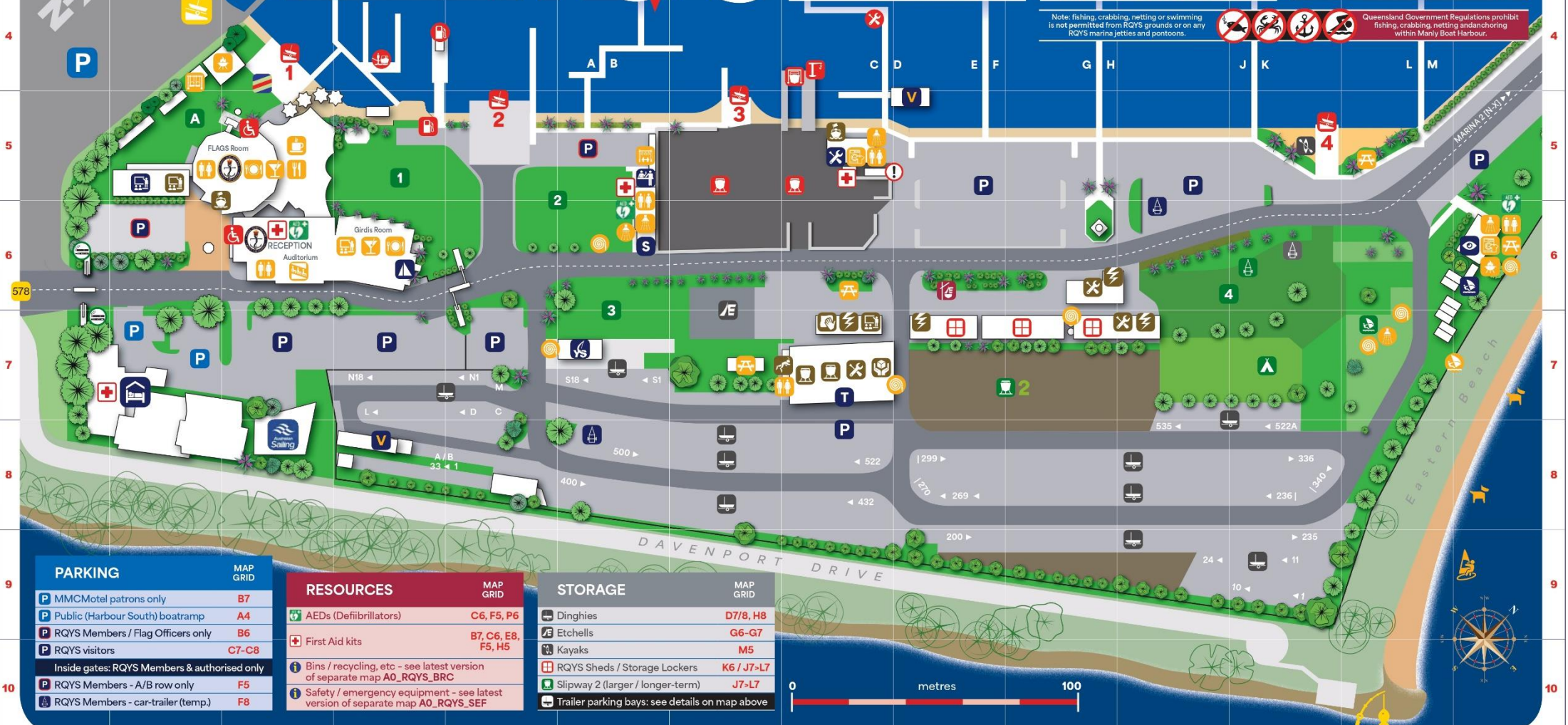
BUSINESSES		MAP GRID
Andrew Woodforth Marine		H7
Brisbane Scuba		H7
CMA Mechanical & Marine		K6
David Glenn Boat Builders		H7
Electech Industries		H7
Green Marine Electrical		K6
JSA Marine		H7
Ocean Logic		J7
Paper Sailors Rock		H7
Professional Boat Care		H7
Qld Marine Training Services		B5
Seadog Marine		H7
Signature Yacht Services		L7
SigTech Electrical		L7
World Wide Boat Brokers		B6
Yachtshare		H5

RQYS DIRECTORY

MAIN SQUADRON PRECINCT / MARINA 1

Note: fishing, crabbing, netting or swimming is not permitted from RQYS grounds or on any RQYS marina jetties and pontoons.

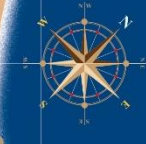
Queensland Government Regulations prohibit fishing, crabbing, netting and anchoring within Manly Boat Harbour.



PARKING		MAP GRID
MMCMotel patrons only		B7
Public (Harbour South) boatramp		A4
RQYS Members / Flag Officers only		B6
RQYS visitors		C7-C8
Inside gates: RQYS Members & authorised only		
RQYS Members - A/B row only		F5
RQYS Members - car-trailer (temp.)		F8

RESOURCES		MAP GRID
AEDs (Defibrillators)		C6, F5, P6
First Aid kits		B7, C6, E8, F5, H5
Bins / recycling, etc - see latest version of separate map A0_RQYS_BRC		
Safety / emergency equipment - see latest version of separate map A0_RQYS_SEF		

STORAGE		MAP GRID
Dinghies		D7/8, H8
Etchells		G6-G7
Kayaks		M5
RQYS Sheds / Storage Lockers		K6 / J7-L7
Slipway 2 (larger / longer-term)		J7-L7
Trailer parking bays: see details on map above		



ROYAL QUEENSLAND YACHT SQUADRON – THE SAILING GATEWAY TO MORETON BAY

Gold Coast

75km

Brisbane CBD

Sunshine Coast

100km



Waterloo Bay



~ Founded 1885 ~

rqys.com.au

[/RQYS.Manly](https://www.facebook.com/RQYS.Manly) [/royal_qld_yacht_squadron](https://www.instagram.com/royal_qld_yacht_squadron)

