



Myora Cup

2026

22nd March 2026

NOTICE OF RACE

(NoR)

&

SAILING INSTRUCTIONS

(SI)

Including **Amendment 1**

ORGANISING AUTHORITY

ROYAL QUEENSLAND YACHT SQUADRON LTD
578 Royal Esplanade, Manly 4179, QLD, Australia

The notation '[NP]' in a rule of the sailing instructions (SIs) means that a boat may not protest another boat for breaking that rule. This changes RRS 60.1.

The notation '[DP]' in a rule of the sailing instructions (SI's) means that a protest committee can award a penalty less than disqualification (including no penalty) at their discretion. This changes RRS 60.5 and RRS 64.

1. RULES

- 1.1 The "Myora Cup 2026" Notice of Race & Sailing Instructions shall amend the "141st Sailing Season" Notice of Race & Sailing Instructions for the duration of the Myora Cup 2026.
- 1.2 The event is governed by the rules as defined in The Racing Rules of Sailing (RRS).
- 1.3 The Australian Sailing Prescriptions and Special Regulations Part 1 Category 5 apply.
- 1.4 RRS Appendix T (Arbitration) will apply.
- 1.5 The IRC rules will apply.
- 1.6 The OMR rules will apply.

2. CODE OF CONDUCT

- 2.1 [DP] Competitors and support persons shall comply with reasonable requests from race officials.
- 2.2 [DP] Competitors and support persons shall handle any equipment or place advertising provided by the organizing authority with care, seamanship, in accordance with any instructions for its use and without interfering with its functionality.
- 2.3 Competitors must follow RQYS Club Policies (<https://www.rqys.com.au/membership/rules-and-regulations/>)

3. CHANGES TO RACE DOCUMENTS & SCHEDULE

- 3.1 Any change to the race documents will be posted before 0900 on the day it will take effect, except that any change to the schedule of races will be posted by 2000 on the day before it will take effect.

4. COMMUNICATION

- 4.1 The official notice board (ONB) is located at <https://www.rqys.com.au/event/myora-cup-2026/>.
- 4.2 Secondary to the Official noticeboard "instant messaging" system WhatsApp may be used to notify skippers of timely information, confirmation of days course, Protest Time limit etc. Join the group at <https://chat.whatsapp.com/HizbVHcOi3qGpyrQ1PS2Do>
- 4.3 The race office is located at The RQYS Sailing Office located adjacent to the Main Rigging Lawn, telephone 3396 8666, email sailing@rqys.com.au .
- 4.4 [DP] All boats shall carry a VHF radio capable of communicating on the [VHF maritime mobile band](#).
- 4.5 On the water, the race committee intends to monitor and communicate with competitors on VHF radio channel 72.
- 4.6 If the race committee displays code flag L alternate VHF channel 77 will be used. This changes NoR 5.5.
- 4.7 [DP] While racing, except in an emergency, a boat shall not make voice or data transmissions and shall not receive voice or data communication that is not available to all boats.

5. ELIGIBILITY AND ENTRY

- 5.1 The event is open to all Monohull and Multihull boats on the register of the Royal Queensland Yacht Squadron.
- 5.2 All vessels currently entered as a season's entry to RQYS Yachts Club Racing are automatically entered in this event.
- 5.3 Boats may enter the event by registering online at <https://www.rqys.com.au/event/myora-cup-2026/> by 22nd March 2026.
- 5.4 To be considered an entry in the event, a boat shall complete all registration requirements and pay all fees.
- 5.5 Late entries may be accepted at the discretion of the Organising Authority.

6. FEES

- 6.1 All Boats not entered as a season's entry to RQYS Yachts Club Racing shall pay an entry fee of \$50.00
- 6.2 Any Refunds will be as per the RQYS Sailing Refunds Policies (<https://www.rqys.com.au/membership/rules-and-regulations/>).

7. SCHEDULE

7.1

DATE	EVENT	FIRST WARNING SIGNAL or TIME
Sunday 22 nd March 2026	Monohull Division	First Warning not before 1100 hrs
	Multihull Division	First Warning not before 1115 hrs
	Presentation in RQYS Bar	ASAP after racing

7.2 No warning signal will be made after 1400hrs.

8. SIGNALS MADE A SHORE

- 8.1 Signals made ashore will be displayed at the official flagpole located at the top of the Eastern Gangway of the Bill Kirby Docks.
- 8.2 When flag AP is displayed ashore, '1 minute' is replaced with 'not less than 60 minutes' in Race Signals AP.

9. DIVISION FLAGS

- 9.1 Monohull Division flag shall be Numeral Pennant 1.
- 9.2 Multihull Division flag shall be Numeral Pennant 5.

10. EQUIPMENT INSPECTION

- 10.1 Each boat shall produce or verify the existence of a valid measurement or rating certificate where applicable.
- 10.2 Boats may be inspected at any time.

11. VENUE

- 11.1 Attachment C shows the plan of the event venue.
- 11.2 The race area will be in the vicinity of Moreton Bay – As far North as Green Island and as far South as Peel Island.

12. COURSES

- 12.1 The course to be sailed & marks to be used will be as described in Attachment A or a course as described in the [RQYS Yacht Racing Course Book 2025/26 Version 2](#).

13. MARKS

- 13.1 The Laid Mark (LM) will be an Orange Conical Mark. Approx 1.8m high and Approximate GPS Co-ordinates may be given prior to the Race Start on VHF Channel 72.
- 13.2 A REQUIREMENT OF MARATIME SAFETY QUEENSLAND – Vessels must observe a 20 meter exclusion zone around each of the following Aids to Navigation: HYR, HL, DL, HBY, HBG, SWR and HYR. A boat failing to keep outside this exclusion zone may be protested by the Race Committee.
- 13.3 The X Mark will be a Pink Conical Mark approx. 1m high.
- 13.4 The Start/Finish marks shall be Orange Teardrops.

14. THE START

- 14.1 The starting line is between a staff displaying an orange flag on the signal vessel at the starboard end and the course side of the port-end starting mark.
- 14.2 Boats whose warning signal has not been made shall avoid the starting area during the starting sequence for other races.
- 14.3 A boat that does not start within ten (10) minutes after her starting signal will be scored Did Not Start without a hearing. This changes RRS A5.1 and RRS A5.2.

15. THE FINISH

- 15.1 The finishing line shall be between a staff displaying a blue flag on the finishing boat and the course side of the finishing mark.

16. PENALTY SYSTEM

- 16.1 RRS 44.1 is changed so that the Two-Turns Penalty is replaced by the One-Turn Penalty.

17. TIME LIMITS

- 17.1 The Race Time Limit shall be 1600 hrs.
- 17.2 Boats failing to finish within the Race Time Limit, and not subsequently retiring, penalized or given redress, will be scored Time Limit Expired (TLE) without a hearing. A boat scored TLE shall be scored points for the finishing place one more than the points scored by the last boat that finished within the Finishing Window. This changes RRS 35, RRS A5.1, RRS A5.2 and RRS A10.

18. HEARING REQUESTS

- 18.1 The protest time limit is 90 minutes after the last boat in that division finishes the last race of the day or the race committee signals no more racing today, whichever is later. The time will be posted on the official notice board.
- 18.2 Hearing request forms are available from and shall be lodged with the race office at <https://www.rqys.com.au/documents-auditing/> or adjacent to the Main Rigging Lawn.
- 18.3 Notices will be posted no later than 30 minutes after the protest time limit to inform competitors of hearings in which they are parties or named as witnesses. Hearings will be held at a time and place advised on the hearing notice.

19. SCORING

- 19.1 A boat's series score shall be the total of her race scores.

20. [NP][DP]SAFETY REGULATIONS

- 20.1 All boats shall SIGN ON by contacting the Race Committee vessel on VHF Channel 72 advising the name of the boat, sail number, number of persons on board (POB) and receive acknowledgement.
 - 20.1 (a) Sign On shall be no earlier than the start boat going on station by displaying an orange flag.
 - 20.1 (b) No later than 15 minutes before the first warning signal.
- 20.2 All Maritime Queensland Aquatic Event conditions must be followed including:
 - 20.2 (a) All Participating ships are not to impede power driven vessels traversing Manly Boat Harbour and associated channels.
 - 20.2 (b) All Participating ships are to obey the gazetted speed limit in Manly Boat Harbour (6 knots).
- 20.3 No Spinnakers are to be flown in the Manly Harbour 6-knot area.
- 20.4 No sailing vessel shall berth on or impede traffic to/from the RQYS fuel dock without permission from the RQYS Sailing or Marina Office.
- 20.5 A boat that retires from a race shall notify the race committee at the first reasonable opportunity.

21. BERTHING

- 21.1 For RQYS Marina Berths or Hardstand spaces please contact the Marina Office on 07 3393 3554 during business hours. Some berthing may also be provided for boats drawing less than 2.3m at the RQYS Bill Kirby Jetty adjacent to the clubhouse, which must be booked by contacting the Marina Office.

22. DIVING EQUIPMENT AND PLASTIC POOLS

- 22.1 Underwater breathing apparatus and plastic pools or their equivalent shall not be used around keelboats between the preparatory signal of the first race and the end of the event.

23. DATA PROTECTION

- 23.1 By participating in an event, a competitor automatically grants to the Organising Authority and the sponsors of the event, the right in perpetuity, to make, use and show, from time to time and at their discretion, any motion pictures, still pictures and live, taped or film television and other reproductions of him/her during the period of the competition for said event in which the competitor participated and in all material related to the said event without compensation.

24. RISK STATEMENT

- 24.1 RRS 3 states: 'The responsibility for a boat's decision to participate in a race or to continue to race is hers alone.' By participating in this event each competitor agrees and acknowledges that sailing is a potentially dangerous activity with inherent risks. These risks include strong winds and rough seas, sudden changes in weather, failure of equipment, boat handling errors, poor seamanship by other boats, loss of balance on an unstable platform and fatigue resulting in increased risk of injury. **Inherent in the sport of sailing is the risk of permanent, catastrophic injury or death by drowning, trauma, hypothermia or other causes.**
- 24.2 All participants are required to comply with any safety provisions as mandated under the Racing Rules of Sailing, the Australian Sailing Special Regulations Part 1 for Racing Boats, and any Class Rules that may apply. The Squadron encourages and supports competitors who believe it is appropriate to exceed the above requirements (such as the wearing of helmets, body armour, impact vests, etc.) if they or their guardian believe that conditions and their personal circumstances warrant. All competitor's attention is drawn to the Risk Statement - Section 24.1 of the Notice of Race.

25. INSURANCE

- 25.1 Each participating boat shall be insured with valid third-party liability insurance with a minimum cover of \$10,000,000AUD per incident or the equivalent.

26. PRIZES

- 26.1 Prizes will be given as follows:
- 1st Monohull Division IRC – EN Ham Myora Cup (Perpetual Trophy)
 - 1st Monohull Division PHS – The Nathan Cup (Perpetual Trophy)
 - 2nd and 3rd for Monohull Division IRC & PHS
 - 1st, 2nd and 3rd for Multihull Division OMR
 - 1st, 2nd and 3rd for Multihull Division PHS
- 26.2 Other prizes may be awarded at the discretion of the Organising Authority

27. FURTHER INFORMATION

- 27.1 For further information please contact:
RQYS Sailing: 07 3396 8666 / sailing@rqys.com.au
578 Royal Esplanade MANLY QLD 4179 AUS
www.rqys.com.au

Attachment A

Designated Marks Used In Attachment B

Description		Approximate Position	
Start/Finish – Inside Waterloo Bay East of the Manly Boat Harbour Leads			
HYR	Huybers Beacon	27°26.9S	153°14.7E
HL	Hanlon Light	27°28.2S	153°21.0E
DL	Douglas Light	27°29.5S	153°22.8E
MLM	Myora Laid Mark, located at approx GPS position	27° 27.5S	153°24.9E
HBY	FI Y 4s Eastern End Horseshoe Bay	27°30.3S	153°22.4E
SWR	Green Beacon (QG) S-W Rocks	27°31.3S	153°20.6E
LLS	Lockyer Light South Cardinal Beacon	27°26.4S	153°14.5E
HBI	Hope Banks Beacon	27°26.0S	153°17.4E
MBG	Green Beacon off Maroom Bank	27°27.03S	153°19.5E
EP	Empire Point Beacon	27°29.2S	153°16.6E

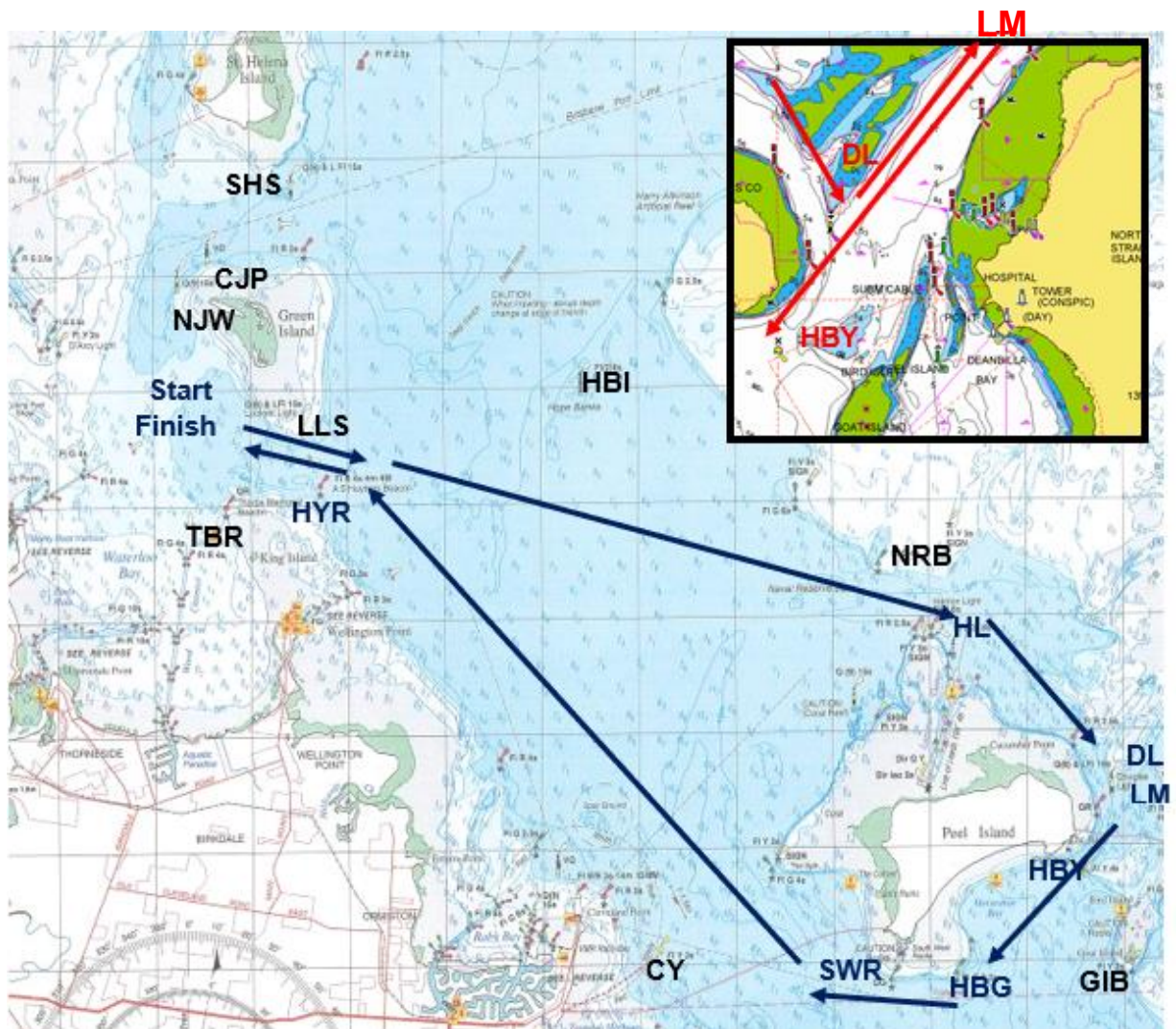
Attachment B Supplementary Instructions:

1 – The Use of an “X” Mark (a mark set at 90 degrees to the Start Line, usually upwind) is indicated by the flying of a Green or Red flag on the Start Boat, this flag indicates the rounding of the “X” Mark and shall be inserted in the Course Mark list in between the Start and the first mark of the course.

2 – All Starts are assumed to be inside Waterloo Bay.

3 – Where the Race Committee wish to run these courses as a “Reverse” they shall indicate the course number followed by a prominent R and indicate as such on Radio. The course shall observe all marks in the opposite order and with the opposing rounding.

Myora Cup 2026	Start – HYR (S) – HL (S) – DL (P) – LM (S) - HBY (P) – HBG (S) – SWR (S) – HYR (P) – Finish (F)	Approx. 27nm
----------------	---	--------------



Attachment C – Location Information

EMERGENCY CONTACTS

Emergencies	000	
RQYS Sailing Manager	0424 101 732	
Royal Queensland Yacht Squadron	(07) 3396 8666	578 Royal Esplanade, Manly QLD
Manly Coast Guard	(07) 3396 5911	40 Trafalgar St, Manly QLD
Wynnum Police	(07) 3308 8100	82 Pine St, Wynnum QLD
Wynnum Fire & Rescue	(07) 3396 3297	2006 Wynnum Rd, Wynnum West
Brisbane Water Police	(07) 3895 0333	2 Howard Smith Dr, Port of Brisbane

Location, access & communication of Next of Kin Details

Sailing Office & SailSys Databases including information gathered from regatta registrations and/or indemnity forms.

Location of Nearest Emergency Medical Facilities

Redlands Hospital	(07) 3488 3111	21 Weippin St, Cleveland QLD
-------------------	----------------	------------------------------

Location of Nearest Medical Facilities

Wynnum Family Health Service	(07) 3893 0093	116 Edith St, Wynnum QLD
Doctors on Manly Road	(07) 3348 6111	12 Manly Rd, Manly QLD
Silky Oaks Medical Practice	(07) 3396 9855	218 Manly Rd, Manly QLD
Dental On Cambridge	(07) 3348 6661	4/99 Cambridge Parade, Manly QLD

LOCAL SERVICES

Sail Maker

North Sails
1/264 Tingal Rd, Wynnum QLD
3396 5822

Hood Sails
181 Wynnum Esplanade, Wynnum QLD
0419 799 958

Ullman Sails
112 Glenora St, Wynnum QLD
(07) 3348 7245

Chandlery

Muir Marine
453 Esplanade, Manly QLD
(07) 3396 9988

Road Tech Marine
20 Redland Bay Rd, Capalaba QLD
(07) 3914 9543

Boat Building / Repairs – Located at RQYS

AW Marine
049 479 204

David Glenn Boat Building
0412 878 144

JSA Marine
(07) 3348 5682

Physio

Manly Physiotherapy & Pilates
3/443 Esplanade, Manly QLD
(07) 3396 8137

Bounce Physio Birkdale
190 Birkdale Rd, Birkdale QLD
(07) 3822 2122

Pharmacy

Manly Village Pharmacy
9/222 Stratton Terrace, Manly QLD
(07) 3396 8999

Groceries

IGA Manly Village
Cnr Stratton Tce & Cambridge Parade
(07) 3396 1980

Woolworths Wynnum Central
145 Florence St, Wynnum QLD
(07) 3513 4416

Butcher

The Local Butcher
222 Stratton Terrace, Manly QLD
(07) 3396 2195

Bakery

Manly Bakery
222 Stratton Terrace, Manly QLD
(07) 3396 5688

Accommodation

[Manly Marine Cover Motel](#)
Located on the Grounds of RQYS
(07) 3348 1000

Limited Camping Facilities at RQYS
[Limited camping MAY be available](#)
(07) 3396 8666

[The Manly Hotel](#)
54 Cambridge Parade, Manly QLD
(07) 3249 5999

[Waterloo Bay Hotel](#)
75 Berrima St, Wynnum QLD
(07) 3893 2344

[Pelican's Nestle Inn](#)
149 Wynnum Esplanade, Wynnum QLD
(07) 3396 3214

[Wynnum Anchor Motel](#)
14 Adam St, Wynnum QLD
(07) 3396 3037

LOCAL WEATHER TIDE

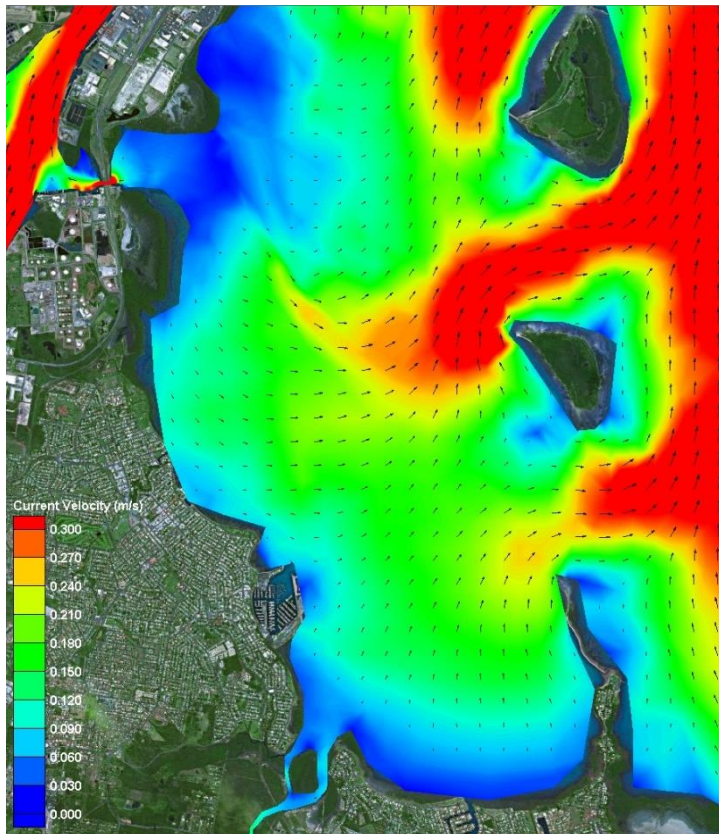
Local Weather: The RQYS Weather Station can be found at:
<https://www.rqys.com.au/weather-station/>
The Weather Station records from above the club Bay Lookout.

BOM: Radar: <http://www.bom.gov.au/products/IDR663.loop.shtml>
Marine Forecast:
<http://www.bom.gov.au/qld/forecasts/moreton-bay.shtml>

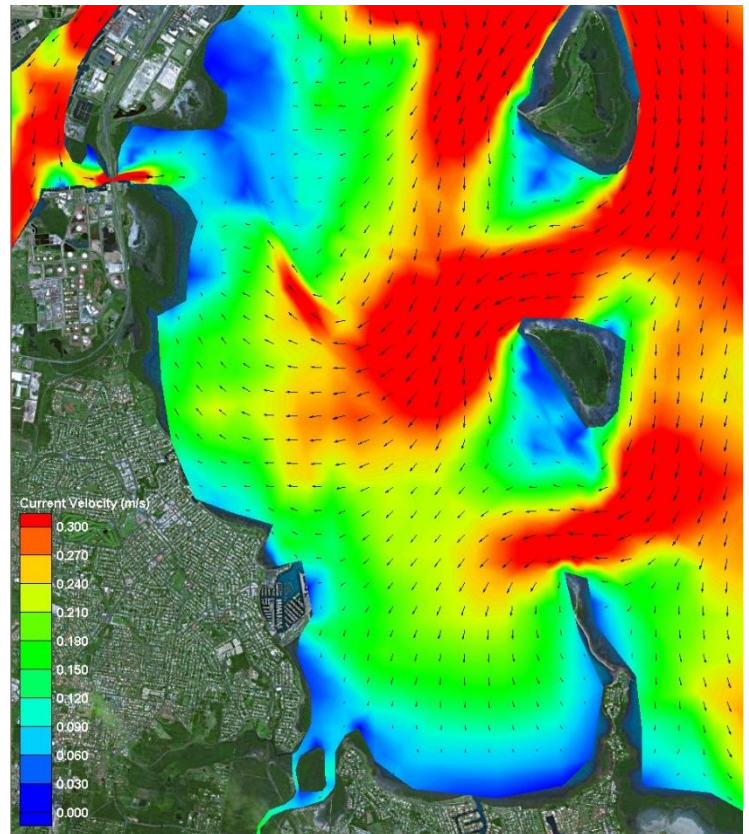
Other Popular forecasts:

Predict Wind: <https://forecast.predictwind.com/table/>
Seabreeze: <https://www.seabreeze.com.au/weather/wind-forecast/brisbane>
WillyWeather: <https://wind.willyweather.com.au/qld/brisbane/brisbane.html>

Waterloo Bay Ebb



Waterloo Bay Flood



LOCALITY		MAP GRID
578 Royal Esplanade access		A6
Eastern Beach (windsurfing)		P7-P8
Davenport Drive dog off-lead area		N10-P7
Inspiration Point lookout (fishing)		M10
Public (Harbour South) Carpark		A4
Public (South) Boatramp		B4
Public (South) Pontoon		C3

NEARBY MANLY HARBOUR VILLAGE SERVICES
 900m / 5-15min

CONVENIENT RQYS & BAYSIDE MANLY ACCESS
 Manly Station: 1.5km
 Brisbane CBD: 30min
 20min drive

BUILDINGS		MAP GRID
Australian Sailing (QLD)		C8
Bayview Lookout		P6
Boatyard [Former Marina] Office		H5
Cavill Building / FLAGS Room		C5
Clubhouse		C6
Manly Marina Cove Motel (MMCM)		A7 / B8
Marina Office		F5
Monument		K6
Sailing Academy		B5
Sailing Office		D6
Sheds / Storage Lockers		K6, J7- L7
Sports Amenities Block		F5
Trades / Services Sheds		H7
Volunteers' Sheds		D8, J5
Windsurfing Centre of Excellence		P6
Youth Squad Shed		F7

GROUNDS		MAP GRID
A Academy (Tackers) Rigging Lawn		B5
DOSA (designated smoking) areas		A6, A7
Kids' / dinghy beach		N5
1 Rigging Lawn 1 (Main / Functions)		D5
2 Rigging Lawn 2 (Marina Office)		F6
3 Rigging Lawn 3 (Youth Squad)		F7
4 Rigging Lawn 4 (Eastern grounds)		L6, M6
Regatta camping area		M7
Regatta trailer parking area		L6
Slipway 2 (Longer-term storage)		J7-L7
Windsurfing - rigging / hosedown		N7, P6

FACILITIES		MAP GRID
Dock - Bill Kirby (VIP: booking only)		D4
Dock - Fit-out work (short-term)		H4
Dock - Fuel (Diesel & PULP)		D4-E4
Fuel - Bowser (shoreside)		D5
HAZMAT Disposals shed		H5
Ramp 1 - Academy (Tackers)		C4
Ramp 2 - Main (Launch / retrieval)		E5
Ramp 3 - Slipway (Boatyard)		G5
Ramp 4 - Dinghy (Kids' beach)		N5
RQYS Boatyard		G5/6-H5/6
RQYS Sheds / Storage Lockers		K6 / J7-L7
Slipway 2 (longer-term storage)		J7-L7
Travelift (35t) & Slewing Crane		H4/H5

AMENITIES		MAP GRID
BBQs		B4, P6
Beach (RQYS - dinghy / kids')		N5
Beach (windsurfing, dogs, etc)		N10-P7
Gym		F5
Hosedown stations (boats, trailers, vehicles)		E7, F6, K7, M5
Hosedowns (personal / gear)		N7, P6
Kids' play areas		B4, N5
Laundry facilities		H5, P6
Seating / picnic areas		D5, G7, H6, N5, P6
Showers (bathrooms)		F6, H5, P6
Showers (outdoors)		F6, N7
Toilets		C5, C6, F6, H5, H7, P6

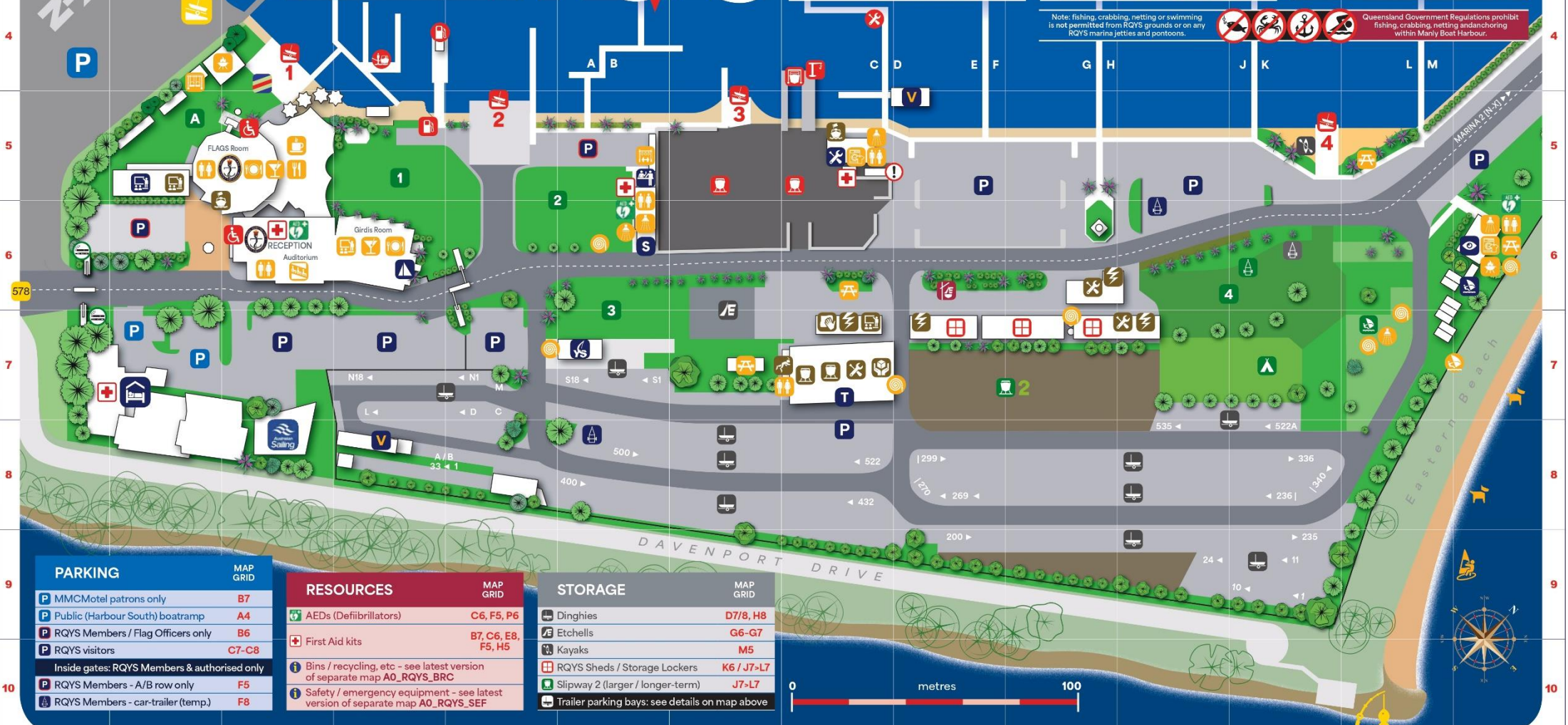
BUSINESSES		MAP GRID
Andrew Woodforth Marine		H7
Brisbane Scuba		H7
CMA Mechanical & Marine		K6
David Glenn Boat Builders		H7
Electech Industries		H7
Green Marine Electrical		K6
JSA Marine		H7
Ocean Logic		J7
Paper Sailors Rock		H7
Professional Boat Care		H7
Qld Marine Training Services		B5
Seadog Marine		H7
Signature Yacht Services		L7
SigTech Electrical		L7
World Wide Boat Brokers		B6
Yachtshare		H5

RQYS DIRECTORY

MAIN SQUADRON PRECINCT / MARINA 1

Note: fishing, crabbing, netting or swimming is not permitted from RQYS grounds or on any RQYS marina jetties and pontoons.

Queensland Government Regulations prohibit fishing, crabbing, netting and anchoring within Manly Boat Harbour.



PARKING		MAP GRID
MMCMotel patrons only		B7
Public (Harbour South) boatramp		A4
RQYS Members / Flag Officers only		B6
RQYS visitors		C7-C8
Inside gates: RQYS Members & authorised only		
RQYS Members - A/B row only		F5
RQYS Members - car-trailer (temp.)		F8

RESOURCES		MAP GRID
AEDs (Defibrillators)		C6, F5, P6
First Aid kits		B7, C6, E8, F5, H5
Bins / recycling, etc - see latest version of separate map A0_RQYS_BRC		
Safety / emergency equipment - see latest version of separate map A0_RQYS_SEF		

STORAGE		MAP GRID
Dinghies		D7/8, H8
Etchells		G6-G7
Kayaks		M5
RQYS Sheds / Storage Lockers		K6 / J7-L7
Slipway 2 (larger / longer-term)		J7-L7
Trailer parking bays: see details on map above		

ROYAL QUEENSLAND YACHT SQUADRON – THE SAILING GATEWAY TO MORETON BAY

Gold Coast

75km

Brisbane CBD

Sunshine Coast

100km



Waterloo Bay



~ Founded 1885 ~

rqys.com.au

[/RQYS.Manly](https://www.facebook.com/RQYS.Manly) [/royal_qld_yacht_squadron](https://www.instagram.com/royal_qld_yacht_squadron)

