

**PORSCHE**

Porsche Centre  
Brisbane



## **2026 International Finn Australian Championship**

7 February to 10 February 2026

**SAILING INSTRUCTIONS (SI)**

### **Organising Authority**

Royal Queensland Yacht Squadron Ltd  
578 Royal Esplanade, Manly, QLD 4179

*The notation '[NP]' in a rule of the sailing instructions (SIs) means that a boat may not protest another boat for breaking that rule. This changes RRS 60.1.*

*The notation '[SP]' in a rule of the sailing instructions (SIs) means that the standard penalty for a breach of the rule may be applied by the race committee or technical committee without a hearing. This changes RRS A5.*

*The notation "[DP]" in a rule of the sailing instructions (SIs) means that the penalty for a breach of the rule may, at the discretion of the protest committee, be less than disqualification.*

## **1. RULES**

- 1.1 The event is governed by the rules as defined in The Racing Rules of Sailing (RRS).
- 1.2 The Australian Sailing Prescriptions and Special Regulations Part 2 shall apply.
- 1.3 The class rules of the International Finn Association (IFA) shall apply.
- 1.4 RRS Appendix P shall apply as amended in SI 14.1.
- 1.5 RRS Appendix T Arbitration shall apply.

## **2. CHANGES TO SAILING INSTRUCTIONS**

- 2.1 Any change to the sailing instructions will be posted no later than 2 (two) hours before the warning signal of the first race on the day it will take effect, except that any change to the schedule of races will be posted by 2000 on the day before it will take effect.

## **3. COMMUNICATIONS WITH COMPETITORS**

- 3.1 Notices to competitors will be posted on the official notice board located at <https://www.rqys.com.au/IFNATS/NB>
- 3.2 The race office is located adjacent to the main rigging lawn, telephone 3396 8666, email [sailing@rqys.com.au](mailto:sailing@rqys.com.au) .

## **4. CODE OF CONDUCT**

- 4.1 [DP] Competitors and support persons shall comply with reasonable requests from race officials.
- 4.2 [DP] Competitors and support persons shall handle any equipment or place advertising provided by the organizing authority with care, seamanship, in accordance with any instructions for its use and without interfering with its functionality.

## **5. SIGNALS MADE ASHORE**

- 5.1 Signals made ashore will be displayed from the official flagpole located at the top of the Eastern Gangway of the Bill Kirby jetty.
- 5.2 When flag AP is displayed ashore, '1 minute' is replaced with 'not less than 45 minutes' in Race Signals AP.

## 6. SCHEDULE OF RACES

6.1 Racing may be held in a split fleet series. The format is shown in Addendum A.

6.2 The event schedule is as per the table below:

Date	Time	Event
Saturday 7 February 2026	10:00 – 15:00	Registration.
	11:30	Invitation Race.
Sunday 8 February 2026	11:00	Competitor briefing at the Main Stage.
	13:00	Warning signal for Race 1. Subsequent Warning signals will be made ASAP after finish of preceding race.
Monday 9 February 2026	13:00	Warning signal for first race of the day. Subsequent Warning signals will be made ASAP after finish of preceding race.
Tuesday 10 February 2026	13:00	Warning signal for first race of the day. Subsequent Warning signals will be made ASAP after finish of preceding race.

6.3 A maximum of six (6) races are scheduled for the regatta.

6.4 Two (2) races are scheduled for each day.

6.5 Additional races may be sailed on any day, provided that the regatta does not become more than one race ahead of schedule and the change is made according to SI 2.1.

6.6 No more than three (3) races will be sailed on one day.

6.7 To alert boats that a race or sequence of races will begin soon, the orange starting line flag will be displayed with one sound at least five minutes before a warning signal is made.

6.8 On the last scheduled day of racing no warning signal will be made after 15:00.

## 7. CLASS FLAGS

7.1 The class flag is a blue Finn logo on a white background.

7.2 A plain flag of the colour of the group starting.

## 8. RACING AREA

8.1 SI Addendum B shows the location of the racing area.

## 9. COURSES

9.1 The diagram in SI Addendum C shows the courses, including the approximate angles between legs, the order in which marks are to be passed, and the side on which each mark is to be left.

9.2 No later than the warning signal, the race committee signal vessel will display the approximate compass bearing of the first leg.

## **10. MARKS**

- 10.1 Marks are described in Addendum C.
- 10.2 The starting marks will be race committee vessels.
- 10.3 The finishing marks will be a race committee vessel and a white inflatable.
- 10.4 If a gate mark is missing, the remaining mark shall be left to port.
- 10.5 If Mark 1 is changed, Mark 1A will be ignored.

## **11. THE START**

- 11.1 The starting line is between staffs displaying orange flags on the signal vessel at the starboard end and the race committee vessel at the port end.
- 11.2 To alert boats that a race or sequence of races will begin soon, the orange starting line flag will be displayed with one sound at least five (5) minutes before a warning signal is made.
- 11.3 [DP] Boats whose warning signal has not been made shall avoid the starting area during the starting sequence for other races.
- 11.4 A boat that does not start within four (4) minutes after her starting signal will be scored Did Not Start without a hearing. This changes RRS A5.

## **12. CHANGE OF THE NEXT LEG OF THE COURSE**

- 12.1 To change the next leg of the course, the race committee will lay a new mark (or move the finishing line) and remove the original mark as soon as practicable. When in a subsequent change a new mark is replaced, it will be replaced by an original mark.

## **13. THE FINISH**

- 13.1 The finishing line is between a staff displaying a blue flag on the race committee vessel and the course side of the nearby inflatable finishing mark.

## **14. PENALTY SYSTEM**

- 14.1 RRS P2.3 does not apply and RRS P2.2 is changed so that it applies to any penalty after the first one.

## 15. TIME LIMITS AND TARGET TIMES

15.1 The Mark 1 Time Limit, Race Time Limit (see RRS 35), and the Finishing Window are shown in the table below.

Number of Races per day	Target Time (min)	Mark 1 Time Limit (min)	Race Time Limit (min)	Finishing Window (min)
1 or 2	70	40	120	20
3	60	40	120	20

- 15.2 If no boat has passed the first mark within the Mark 1 Time Limit, the race will be abandoned.
- 15.3 The Finishing Window is the time for boats to finish after the first boat sails the course. Boats failing to sail the course within the Finishing Window, will be scored Did Not Finish (DNF) without a hearing. This changes RRS 35, A5.1, and A5.2.
- 15.4 Failure to meet the Target Time will not be grounds for redress. This changes RRS 61.

## 16. HEARING REQUESTS

- 16.1 The protest time limit is 75 minutes after the last boat in that group finishes the last race of the day or the race committee signals no more racing today, whichever is later. The time will be posted on the official notice board.
- 16.2 Hearing request forms are available from the race office in the RQYS Girdis Room.
- 16.3 Notices will be posted no later than 30 minutes after the protest time limit to inform competitors of hearings in which they are parties or named as witnesses. Hearings will be held in the protest room, located in the Commodore's Lounge, beginning at the time posted.
- 16.4 A list of boats that have been penalized for breaking RRS 42 under Appendix P will be posted.
- 16.5 The right of appeal from a protest committee decision is denied as provided in RRS 70.3(c)1.

## 17. SCORING

- 17.1 RRS A5 and 44.3 (c) is changed so that the scores are based on the number of boats assigned to the largest fleet in the series.

## 18. SAFETY REGULATIONS [DP] [NP] [SP]

- 18.1 Check-out and check-in:
- 18.1 (a) Before leaving to race on each scheduled racing day, a crew shall personally sign out on the required form located near the top of the launching ramp.
- 18.1 (b) After returning ashore and within the protest time limit, a crew shall personally sign in on the required form located near the top of the launching ramp.
- 18.2 A boat that retires from a race shall notify the race committee at the first reasonable opportunity.

## 19. REPLACEMENT OF CREW OR EQUIPMENT [DP]

- 19.1 Substitution of competitors is not allowed.
- 19.2 Substitution of damaged or lost equipment is not allowed unless authorized in writing by the Event Technical Committee. Requests for substitution shall be made to the committee at the first reasonable opportunity, which may be after the race.

## 20. EQUIPMENT AND MEASUREMENT CHECKS [DP]

- 20.1 A boat or equipment may be inspected at any time for compliance with the class rules, notice of race and sailing instructions.
- 20.2 When instructed by the Event Technical Committee, a boat shall proceed to a designated area for inspection.

## 21. OFFICIAL VESSELS

- 21.1 Official vessels will be identified as follows:

Jury/Judges	White flag with black letter - J
Technical Committee	White flag with black letters - TC
Race Committee	White flag with black letters - RC
Media	White flag with red letter - M

## 22. [DP] SUPPORT TEAMS

- 22.1 Support teams, including all support persons and support person vessels, shall comply with the support team regulations SI Addendum D.

## 23. TRASH DISPOSAL

- 23.1 Trash may be placed aboard official or support person vessels.

## 24. BERTHING [DP]

- 24.1 Boats shall be kept in their assigned places while in the boat park.

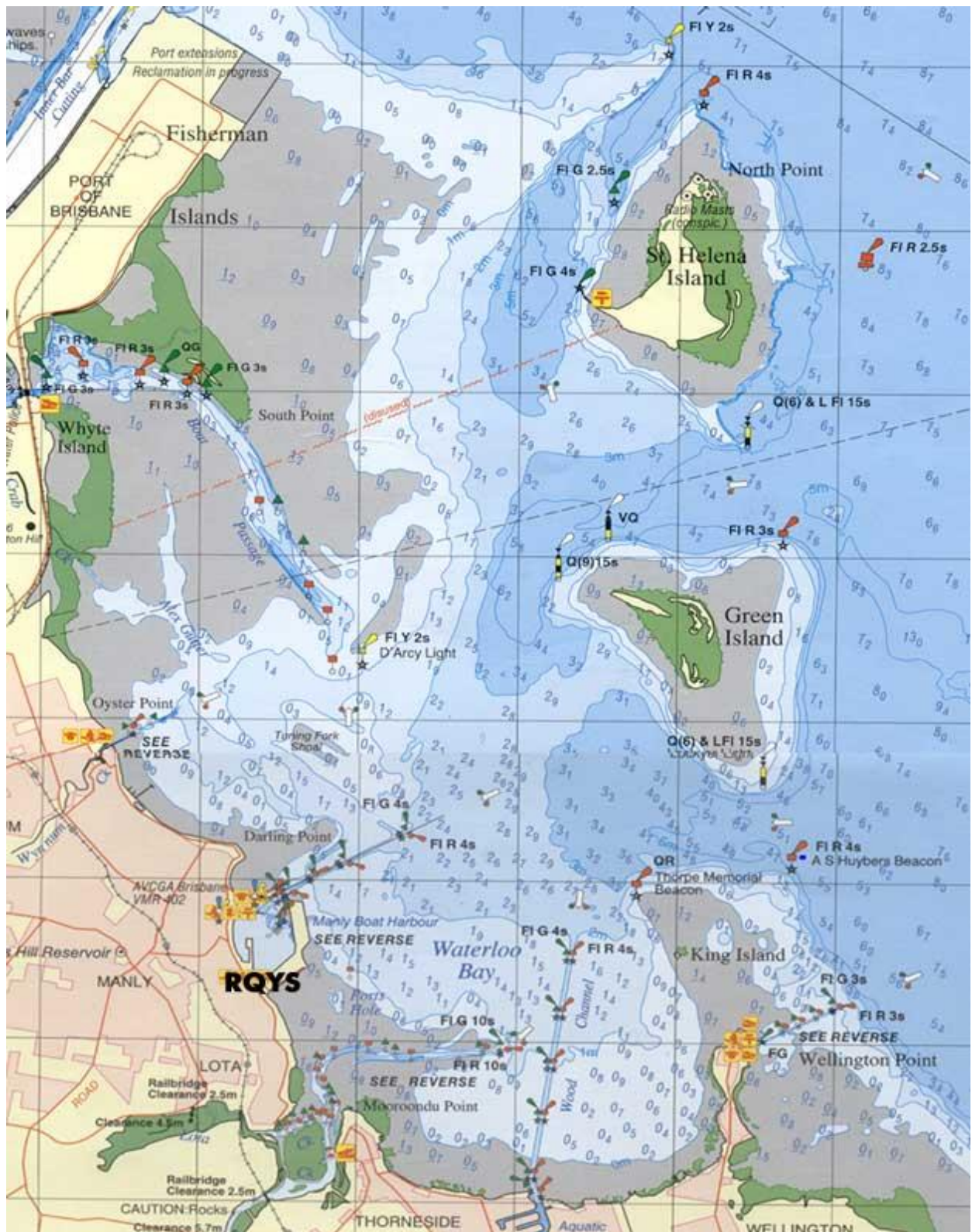
## 25. RISK STATEMENT

- 25.1 RRS 3 states: 'The responsibility for a boat's decision to participate in a race or to continue to race is hers alone.' By participating in this event each competitor agrees and acknowledges that sailing is a potentially dangerous activity with inherent risks. These risks include strong winds and rough seas, sudden changes in weather, failure of equipment, boat handling errors, poor seamanship by other boats, loss of balance on an unstable platform and fatigue resulting in increased risk of injury. **Inherent in the sport of sailing is the risk of permanent, catastrophic injury or death by drowning, trauma, hypothermia or other causes.**

## SI ADDENDUM A – SPLIT FLEETS / SAILING IN GROUPS

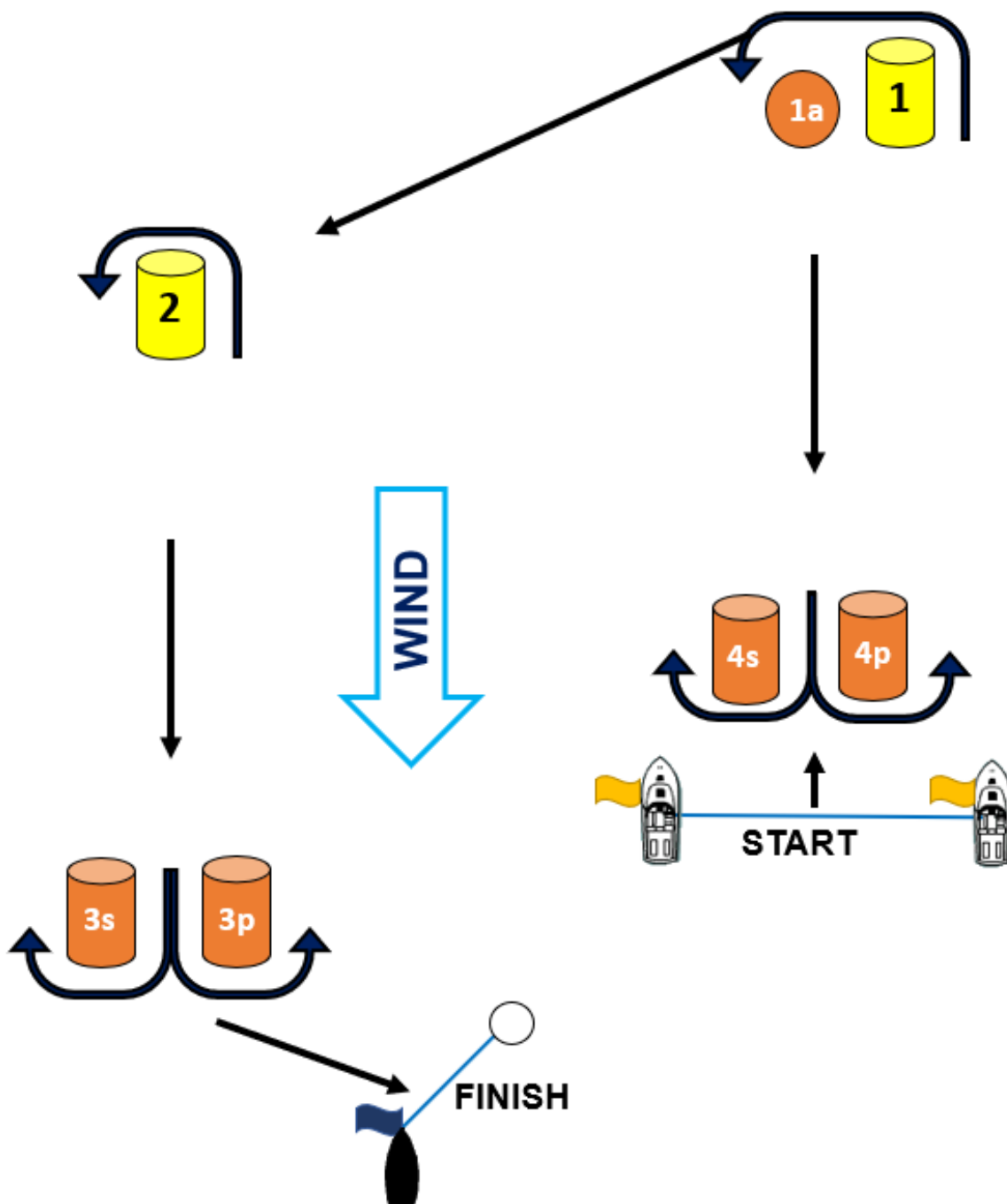
- A1. This Addendum applies when the fleet is split into two or more groups.
- A2. For each day, each boat shall be allocated to a Group designated by colour (yellow or blue).
- A3. Groups will be as far as reasonably possible equal in number and quality.
- A4. The assignments on the first day of racing will be decided by positions in the World Ranking List.  
From the second day of racing, boats will be assigned to groups based on their position in the event ranking.
- |        |              |
|--------|--------------|
| Yellow | Blue         |
| 1st    | 2nd          |
| 4th    | 3rd          |
| 5th    | 6th          |
| 8th    | 7th ... etc. |
- A5. Each competitor will be issued with coloured ribbons corresponding to the allocated group. The ribbon shall be placed at the top of the mast where it should be clearly visible and capable of streaming.
- A6. By 20.00 on the day before the scheduled race day boats will be assigned to new groups according to the scheme above, without regard to decisions resulting from protests, requests for redress or reopenings notified after that time.
- A7. If all boats have sailed the same number of races, the assignment will be based on the provisional ranking of the day. However, if the number of races is not the same, the assignment will be based on the ranking after the last race sailed by all boats.
- A8. If all Groups have not completed the same number of races by the end of any day in the Series, the Group with fewer races shall continue racing the following day, carrying with the new identification ribbon although it may not correspond with the previous day colour, until all Groups have completed the same number of races; that race shall not be counted among the races scheduled that day. All boats shall thereafter race in the new day's Groups.
- A9. If at the end of the regatta, some boats have one more race score than others, the boats with fewer scores shall be awarded average points, after discard if appropriate, of all completed races to that point, for the race that had not been completed, so that all boats have the same number of race scores. This will only apply if all boats have completed a minimum of four races.

# SI ADDENDUM B – RACING AREA



# SI ADDENDUM C – COURSES

CODE	COURSE	MARKS DESCRIPTION
OL1	Start – 1 – 2 – 3s/3p – 2 – 3p – Finish	<b>Marks 1, 2:</b> Yellow Inflatables <b>Mark 1a:</b> Orange Teardrop <b>3s/3p &amp; 4s/4p:</b> Orange Inflatables <b>Finish pin:</b> White Inflatable <b>Change Mark:</b> Purple Inflatable
IL1	Start – 1 – 1a – 4s/4p – 1 – 2 – 3p – Finish	



## **SI ADEDENDUM D – SUPPORT TEAMS**

- C1 Team leaders, coaches and other support persons shall not interfere with boats racing or official vessels or create a wake that affects boats racing.
  
- C2 Support vessels shall not be positioned:
  - C2.1 Closer than 50m of any boat racing.
  - C2.2 Within 50m to leeward of the starting line and marks from the time of the preparatory signal for any fleet until all boats have left the starting area, or the Race Committee signals a postponement, general recall or abandonment.
  - C2.3 Between any boat racing and the next mark of the course.
  - C2.4 Within 50m of any mark of the course while boats are in the vicinity of that mark.
  - C2.5 Within 50m of the finishing line and marks while boats re finishing.
  
- C3 In addition, support vessels that are motoring above 5 knots shall remain at least 150m from any boat racing.
  
- C4 Support vessels shall comply with any reasonable request from a regatta official.
  
- C5 All support vessels shall carry operational engine kill cords, which shall be used at all times when the engine is running.