



---

# Brisbane Women's Keelboat Cup

7<sup>th</sup> & 8<sup>th</sup> March 2026

## NOTICE OF RACE (NoR)

ORGANISING AUTHORITY

**ROYAL QUEENSLAND YACHT SQUADRON LTD**  
578 Royal Esplanade, Manly, QLD 4179

*The notation '[NP]' in a rule of the sailing instructions (SIs) means that a boat may not protest another boat for breaking that rule. This changes RRS 60.1.*

*The notation '[DP]' in a rule of the sailing instructions (SI's) means that a protest committee can award a penalty less than disqualification (including no penalty) at their discretion. This changes RRS 60.5 and RRS 64.*

## **1. RULES**

- 1.1 The event is governed by the rules as defined in The Racing Rules of Sailing (RRS).
- 1.2 The Australian Sailing Prescriptions and Special Regulations part 1 category 5 apply.
- 1.3 Where there is a difference between the Notice of Race (NoR) and the Sailing Instructions (SI) the SI take precedence.
- 1.4 The IRC 2025 Rules shall apply to boats competing in an IRC scored division.
- 1.5 RRS Appendix T – Arbitration will apply.
- 1.6 RRS 90.3(e) shall apply (Time Limit for changes to race scores).

## **2. CODE OF CONDUCT**

- 2.1 [DP] Competitors and support persons shall comply with reasonable requests from race officials.
- 2.2 [DP] Competitors and support persons shall handle any equipment or place advertising provided by the organizing authority with care, seamanship, in accordance with any instructions for its use and without interfering with its functionality.
- 2.3 Competitors must follow RQYS Club Policies (<https://www.rqys.com.au/membership/rules-and-regulations/> )

## **3. CHANGES TO RACE DOCUMENTS & SCHEDULE**

- 3.1 Any change to the race documents will be posted before 0900 on the day it will take effect, except that any change to the schedule of races will be posted by 2000 on the day before it will take effect.

## **4. SAILING INSTRUCTIONS**

- 4.1 The sailing instructions will be available after 1600 on 04/03/2026 at <https://www.rqys.com.au/event/brisbane-womens-keelboat-cup-2026/>.

## **5. COMMUNICATION**

- 5.1 The official notice board (ONB) is located at <https://www.rqys.com.au/event/brisbane-womens-keelboat-cup-2026/>.
- 5.2 Secondary to the Official noticeboard “instant messaging” system WhatsApp may be used to notify skippers of timely information, confirmation of days course, Protest Time limit etc. Join the group at <https://chat.whatsapp.com/Lob7wuzLSQKKYwx4jGNSU1>
- 5.3 The race office is located at The RQYS Sailing Office located adjacent to the Main Rigging Lawn, telephone 3396 8666, email [sailing@rqys.com.au](mailto:sailing@rqys.com.au) .
- 5.4 [DP] All boats shall carry a VHF radio capable of communicating on the [VHF maritime mobile band](#).
- 5.5 On the water, the race committee intends to monitor and communicate with competitors on VHF radio channel 72.
- 5.6 If the race committee displays code flag L alternate VHF channel 77 will be used. This changes NoR 5.5.
- 5.7 [DP] While racing, except in an emergency, a boat shall not make voice or data transmissions and shall not receive voice or data communication that is not available to all boats.

## 6. ELIGIBILITY AND ENTRY

- 6.1 The event is open to all keelboats on the register of a yacht club affiliated with AS.
- 6.2 Boats entering the IRC division shall produce or verify the existence of a current, valid IRC certificate at registration.
- 6.3 All boats shall be entered in "Division 1" with subseries:
- 6.3 (a) PHS (mandatory)
  - 6.3 (b) PHS All Female (Optional)
  - 6.3 (c) IRC (Optional)
- 6.4 Boats may enter the event by registering online at <https://www.rqys.com.au/event/brisbane-womens-keelboat-cup-2026/> by 1600 hrs 04/03/2026.
- 6.5 To be considered an entry in the event, a boat shall complete all registration requirements and pay all fees.
- 6.6 Late entries may be accepted at the discretion of the Organising Authority; late entry may incur an additional late fee.

## 7. FEES

- 7.1 Entry fees are as follows:

Standard Entry	Late Entry Fee (per NoR 6.4)
\$90.00	\$110.00

- 7.2 Any Refunds will be as per the RQYS Sailing Refunds Policies (<https://www.rqys.com.au/membership/rules-and-regulations/>).

## 8. CREW LIMITATIONS

- 8.1 The following crew limitations apply:
- 8.1 (a) All crew must be affiliated with AS and provide their AS number with entry.
  - 8.1 (b) Crew must contain at least 60% women (rounded down to whole number).
  - 8.1 (c) Women must be at least Helm, Mainsheet and Bow
  - 8.1 (d) Skippers are encouraged to include a youth sailor (Under 23)

## 9. INDICATIVE SCHEDULE

- 9.1 The Sailing Instructions schedule shall take precedence.

9.2

DATE	EVENT	FIRST WARNING SIGNAL or TIME
Saturday 7 <sup>th</sup> March 2026	Briefing in RQYS Auditorium	0830 Hours
	Passage Race	Not Before 1055 Hours
Sunday 8 <sup>th</sup> March 2026	Briefing in RQYS Auditorium	0830 Hours
	Passage Race	Not Before 1055 Hours
	Presentation in TP BBQ Area (on Jnr Lawn)	After Racing

- 9.3 To alert boats that a race or sequence of races will begin soon, the orange starting line flag will be displayed with one sound at least five minutes before a warning signal is made.
- 9.4 On the last scheduled day of racing no warning signal will be made after 1400 hrs.

## 10. EQUIPMENT INSPECTION

- 10.1 Boats may be inspected at any time.

## 11. VENUE

- 11.1 NoR Attachment A shows the location of the starting area.
- 11.2 NoR Attachment B shows the plan of the event venue.

## 12. COURSES

- 12.1 The passage race courses shall be selected from the [RQYS Yacht Racing Course Book 2025/26 Version 1](#).

## 13. PENALTY SYSTEM

- 13.1 RRS 44.1 is changed so that the Two-Turns Penalty is replaced by the One-Turn Penalty.

## 14. SCORING

- 14.1 One (1) race is required to be completed to constitute a series.
- 14.2 A boat's series score will be the total of her race scores.

## 15. BERTHING

- 15.1 For RQYS Marina Berths, please contact the RQYS Marina Office on 3396 8666 during business hours, Berthing may be limited early booking is essential.

## 16. HAUL-OUT RESTRICTIONS

- 16.1 [DP] Keelboats shall not be hauled out during the event except with and according to the terms of prior written permission of the race committee.

## 17. DIVING EQUIPMENT AND PLASTIC POOLS

- 17.1 Underwater breathing apparatus and plastic pools or their equivalent shall not be used around keelboats between the preparatory signal of the first race and the end of the event.
- 17.2 Keelboats shall not be cleaned below the waterline by any means during the event.

## 18. DATA PROTECTION

- 18.1 By participating in an event, a competitor automatically grants to the Organising Authority and the sponsors of the event, the right in perpetuity, to make, use and show, from time to time and at their discretion, any motion pictures, still pictures and live, taped or film television and other reproductions of him/her during the period of the competition for said event in which the competitor participated and in all material related to the said event without compensation.

## 19. RISK STATEMENT

- 19.1 RRS 3 states: 'The responsibility for a boat's decision to participate in a race or to continue to race is hers alone.' By participating in this event each competitor agrees and acknowledges that sailing is a potentially dangerous activity with inherent risks. These risks include strong winds and rough seas, sudden changes in weather, failure of equipment, boat handling errors, poor seamanship by other boats, loss of balance on an unstable platform and fatigue resulting in increased risk of injury. **Inherent in the sport of sailing is the risk of permanent, catastrophic injury or death by drowning, trauma, hypothermia or other causes.**
- 19.2 All participants are required to comply with any safety provisions as mandated under the Racing Rules of Sailing, the Australian Sailing Special Regulations 1 for Racing Boats, and any Class Rules that may apply. The Squadron encourages and supports competitors who believe it is appropriate to exceed the above requirements (such as the wearing of helmets, body armour, impact vests, etc.) if they or their guardian believe that conditions and their personal circumstances warrant. All competitor's attention is drawn to the Risk Statement - Section 19.1 of the Notice of Race.

## **20. INSURANCE**

- 20.1 Each participating boat shall be insured with valid third-party liability insurance with a minimum cover of \$10,000,000AUD per incident or the equivalent.

## **21. PRIZES**

- 21.1 The overall winner of the Brisbane Women's Keelboat Cup will be the first placed boat overall on PHS in Division 1.

- 21.2 Prizes will be awarded to:

21.2 (a) Overall PHS 1<sup>st</sup>, 2<sup>nd</sup>, 3<sup>rd</sup>

21.2 (b) Overall PHS All Female 1<sup>st</sup>, 2<sup>nd</sup> & 3<sup>rd</sup>

21.2 (c) Overall IRC 1<sup>st</sup>, 2<sup>nd</sup> & 3<sup>rd</sup>

21.2 (d) Owner PHS 1<sup>st</sup>

21.2 (e) Perseverance Award – nominated by the Organizing Authority.

- 21.3 Daily Prizes will be awarded to:

21.3 (a) 1<sup>st</sup>, 2<sup>nd</sup> & 3<sup>rd</sup> PHS.

21.3 (b) 1<sup>st</sup> All Female PHS.

21.3 (c) 1<sup>st</sup> IRC.

- 21.4 Other prizes may be awarded at the discretion of the Organising Authority

## **22. FURTHER INFORMATION**

- 22.1 For further information please contact:

RQYS Sailing Office 07 3396 8666 (opt 6.)

Rose Haynes – Sailing Administrator [sailingadmin@rqys.com.au](mailto:sailingadmin@rqys.com.au)

Austin Sims – Assistant Sailing Manager [sailing@rqys.com.au](mailto:sailing@rqys.com.au)

Mark Dingley – Sailing Manager [sailingmanager@rqys.com.au](mailto:sailingmanager@rqys.com.au)

578 Royal Esplanade MANLY QLD 4179 AUS

[www.rqys.com.au](http://www.rqys.com.au)



# Attachment B – Location Information

## EMERGENCY CONTACTS

---

Emergencies	000	
RQYS Sailing Manager	0424 101 732	
Royal Queensland Yacht Squadron	(07) 3396 8666	578 Royal Esplanade, Manly QLD
Manly Coast Guard	(07) 3396 5911	40 Trafalgar St, Manly QLD
Wynnum Police	(07) 3308 8100	82 Pine St, Wynnum QLD
Wynnum Fire & Rescue	(07) 3396 3297	2006 Wynnum Rd, Wynnum West
Brisbane Water Police	(07) 3895 0333	2 Howard Smith Dr, Port of Brisbane

### Location, access & communication of Next of Kin Details

Sailing Office & SailSys Databases including information gathered from regatta registrations and/or indemnity forms.

### Location of Nearest Emergency Medical Facilities

Redlands Hospital	(07) 3488 3111	21 Weippin St, Cleveland QLD
-------------------	----------------	------------------------------

### Location of Nearest Medical Facilities

Wynnum Family Health Service	(07) 3893 0093	116 Edith St, Wynnum QLD
Doctors on Manly Road	(07) 3348 6111	12 Manly Rd, Manly QLD
Silky Oaks Medical Practice	(07) 3396 9855	218 Manly Rd, Manly QLD
Dental On Cambridge	(07) 3348 6661	4/99 Cambridge Parade, Manly QLD

## LOCAL SERVICES

### Sail Maker

North Sails  
1/264 Tingal Rd, Wynnum QLD  
3396 5822

Hood Sails  
181 Wynnum Esplanade, Wynnum QLD  
0419 799 958

Ullman Sails  
112 Glenora St, Wynnum QLD  
(07) 3348 7245

### Chandlery

Muir Marine  
453 Esplanade, Manly QLD  
(07) 3396 9988

Road Tech Marine  
20 Redland Bay Rd, Capalaba QLD  
(07) 3914 9543

### Boat Building / Repairs – Located at RQYS

AW Marine  
049 479 204

David Glenn Boat Building  
0412 878 144

JSA Marine  
(07) 3348 5682

### Physio

Manly Physiotherapy & Pilates  
3/443 Esplanade, Manly QLD  
(07) 3396 8137

Bounce Physio Birkdale  
190 Birkdale Rd, Birkdale QLD  
(07) 3822 2122

### Pharmacy

Manly Village Pharmacy  
9/222 Stratton Terrace, Manly QLD  
(07) 3396 8999

### Groceries

IGA Manly Village  
Cnr Stratton Tce & Cambridge Parade  
(07) 3396 1980

Woolworths Wynnum Central  
145 Florence St, Wynnum QLD  
(07) 3513 4416

### Butcher

The Local Butcher  
222 Stratton Terrace, Manly QLD  
(07) 3396 2195

### Bakery

Manly Bakery  
222 Stratton Terrace, Manly QLD  
(07) 3396 5688

### Accommodation

[Manly Marine Cover Motel](#)  
Located on the Grounds of RQYS  
(07) 3348 1000

Limited Camping Facilities at RQYS  
[Limited camping MAY be available](#)  
(07) 3396 8666

[The Manly Hotel](#)  
54 Cambridge Parade, Manly QLD  
(07) 3249 5999

[Waterloo Bay Hotel](#)  
75 Berrima St, Wynnum QLD  
(07) 3893 2344

[Pelican's Nestle Inn](#)  
149 Wynnum Esplanade, Wynnum QLD  
(07) 3396 3214

[Wynnum Anchor Motel](#)  
14 Adam St, Wynnum QLD  
(07) 3396 3037

## LOCAL WEATHER TIDE

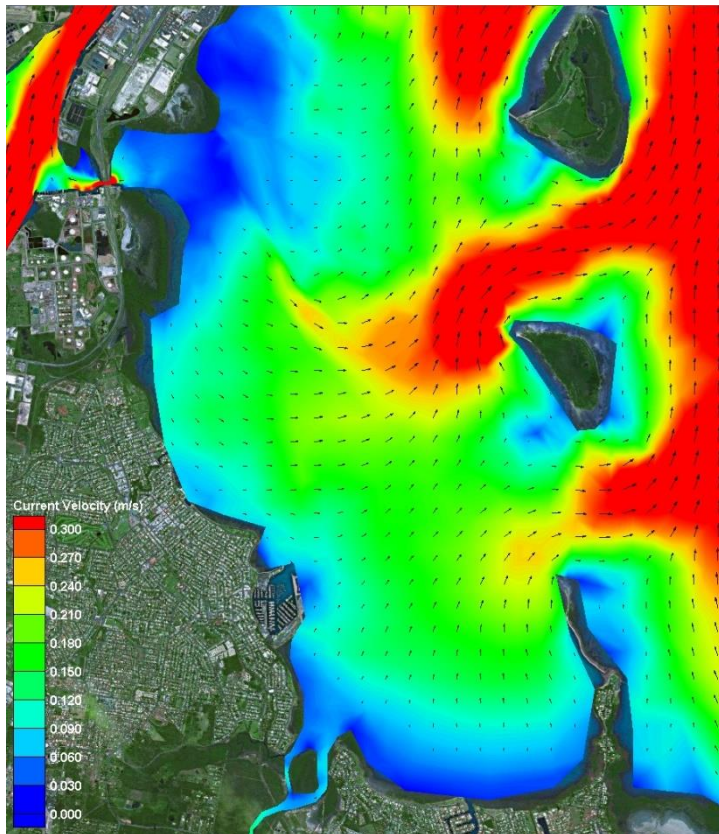
Local Weather: The RQYS Weather Station can be found at:  
<https://www.rqys.com.au/weather-station/>  
The Weather Station records from above the club Bay Lookout.

BOM: Radar: <http://www.bom.gov.au/products/IDR663.loop.shtml>  
Marine Forecast:  
<http://www.bom.gov.au/qld/forecasts/moreton-bay.shtml>

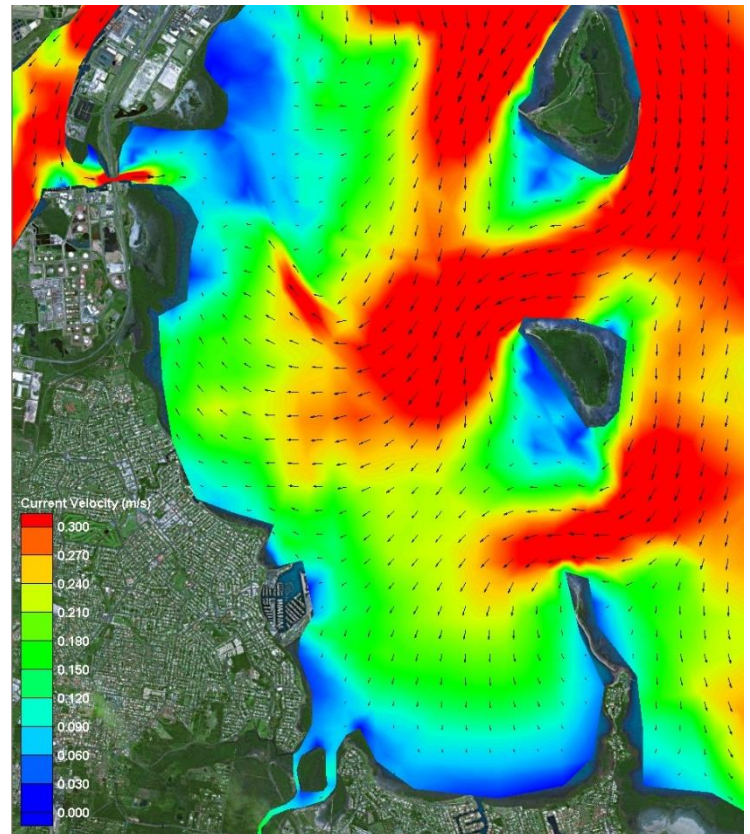
Other Popular forecasts:

Predict Wind: <https://forecast.predictwind.com/table/>  
Seabreeze: <https://www.seabreeze.com.au/weather/wind-forecast/brisbane>  
WillyWeather: <https://wind.willyweather.com.au/qld/brisbane/brisbane.html>

### Waterloo Bay Ebb



### Waterloo Bay Flood



LOCALITY		MAP GRID
578 Royal Esplanade access		A6
Eastern Beach (windsurfing)		P7-P8
Davenport Drive dog off-lead area		N10-P7
Inspiration Point lookout (fishing)		M10
Public (Harbour South) Carpark		A4
Public (South) Boatramp		B4
Public (South) Pontoon		C3

**NEARBY MANLY HARBOUR VILLAGE SERVICES**  
 900m / 5-15min

**CONVENIENT RQYS & BAYSIDE MANLY ACCESS**  
 Manly Station: 1.5km  
 Brisbane CBD: 30min  
 20min drive

BUILDINGS		MAP GRID
Australian Sailing (QLD)		C8
Bayview Lookout		P6
Boatyard [Former Marina] Office		H5
Cavill Building / FLAGS Room		C5
Clubhouse		C6
Manly Marina Cove Motel (MMCM)		A7 / B8
Marina Office		F5
Monument		K6
Sailing Academy		B5
Sailing Office		D6
Sheds / Storage Lockers		K6, J7- L7
Sports Amenities Block		F5
Trades / Services Sheds		H7
Volunteers' Sheds		D8, J5
Windsurfing Centre of Excellence		P6
Youth Squad Shed		F7

GROUNDS		MAP GRID
A Academy (Tackers) Rigging Lawn		B5
DOSA (designated smoking) areas		A6, A7
Kids' / dinghy beach		N5
1 Rigging Lawn 1 (Main / Functions)		D5
2 Rigging Lawn 2 (Marina Office)		F6
3 Rigging Lawn 3 (Youth Squad)		F7
4 Rigging Lawn 4 (Eastern grounds)		L6, M6
Regatta camping area		M7
Regatta trailer parking area		L6
Slipway 2 (Longer-term storage)		J7-L7
Windsurfing - rigging / hosedown		N7, P6

FACILITIES		MAP GRID
Dock - Bill Kirby (VIP: booking only)		D4
Dock - Fit-out work (short-term)		H4
Dock - Fuel (Diesel & PULP)		D4-E4
Fuel - Bowser (shoreside)		D5
HAZMAT Disposals shed		H5
Ramp 1 - Academy (Tackers)		C4
Ramp 2 - Main (Launch / retrieval)		E5
Ramp 3 - Slipway (Boatyard)		G5
Ramp 4 - Dinghy (Kids' beach)		N5
RQYS Boatyard		G5/6-H5/6
RQYS Sheds / Storage Lockers		K6 / J7-L7
Slipway 2 (longer-term storage)		J7-L7
Travelift (35t) & Slewing Crane		H4/H5

AMENITIES		MAP GRID
BBQs		B4, P6
Beach (RQYS - dinghy / kids')		N5
Beach (windsurfing, dogs, etc)		N10-P7
Gym		F5
Hosedown stations (boats, trailers, vehicles)		E7, F6, K7, M5
Hosedowns (personal / gear)		N7, P6
Kids' play areas		B4, N5
Laundry facilities		H5, P6
Seating / picnic areas		D5, G7, H6, N5, P6
Showers (bathrooms)		F6, H5, P6
Showers (outdoors)		F6, N7
Toilets		C5, C6, F6, H5, H7, P6

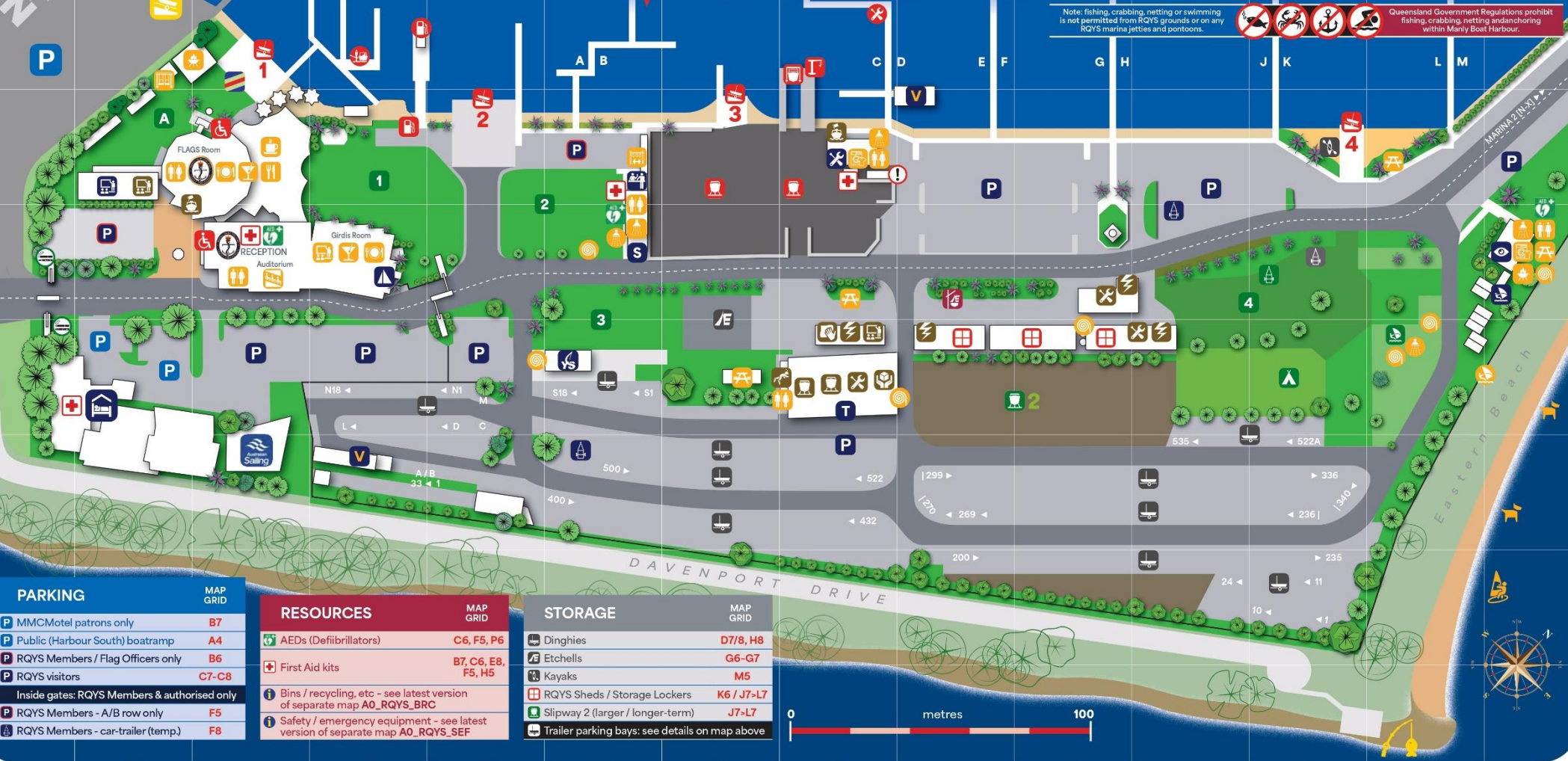
BUSINESSES		MAP GRID
Andrew Woodforth Marine		H7
Brisbane Scuba		H7
CMA Mechanical & Marine		K6
David Glenn Boat Builders		H7
Electech Industries		H7
Green Marine Electrical		K6
JSA Marine		H7
Ocean Logic		J7
Paper Sailors Rock		H7
Professional Boat Care		H7
Qld Marine Training Services		B5
Seadog Marine		H7
Signature Yacht Services		L7
SigTech Electrical		L7
World Wide Boat Brokers		B6
Yachtshare		H5

# RQYS DIRECTORY

**MAIN SQUADRON PRECINCT / MARINA 1**

Note: fishing, crabbing, netting or swimming is not permitted from RQYS grounds or on any RQYS marina jetties and pontoons.

Queensland Government Regulations prohibit fishing, crabbing, netting and anchoring within Manly Boat Harbour.



PARKING		MAP GRID
MMCMotel patrons only		B7
Public (Harbour South) boatramp		A4
RQYS Members / Flag Officers only		B6
RQYS visitors		C7-C8
Inside gates: RQYS Members & authorised only		
RQYS Members - A/B row only		F5
RQYS Members - car-trailer (temp.)		F8

RESOURCES		MAP GRID
AEDs (Defibrillators)		C6, F5, P6
First Aid kits		B7, C6, E8, F5, H5
Bins / recycling, etc - see latest version of separate map A0_RQYS_BRC		
Safety / emergency equipment - see latest version of separate map A0_RQYS_SEF		

STORAGE		MAP GRID
Dinghies		D7/8, H8
Etchells		G6-G7
Kayaks		M5
RQYS Sheds / Storage Lockers		K6 / J7-L7
Slipway 2 (larger / longer-term)		J7-L7
Trailer parking bays: see details on map above		

# ROYAL QUEENSLAND YACHT SQUADRON – THE SAILING GATEWAY TO MORETON BAY

Gold Coast

75km

Brisbane CBD

Sunshine Coast

100km



Waterloo Bay



~ Founded 1885 ~

[rqys.com.au](http://rqys.com.au)

[/RQYS.Manly](https://www.facebook.com/RQYS.Manly) [/royal\\_qld\\_yacht\\_squadron](https://www.instagram.com/royal_qld_yacht_squadron)

