



VX One

Queensland State Championships 2025

13th - 14th December 2025

NOTICE OF RACE (NoR)

Including Amendment 1

ORGANISING AUTHORITY

ROYAL QUEENSLAND YACHT SQUADRON LTD
578 Royal Esplanade, Manly 4179, QLD, Australia



The notation '[NP]' in a rule of the sailing instructions (SIs) means that a boat may not protest another boat for breaking that rule. This changes RRS 60.1.

The notation '[DP]' in a rule of the sailing instructions (SI's) means that a protest committee can award a penalty less than disqualification (including no penalty) at their discretion. This changes RRS 60.5 and RRS 64.

1. RULES

- 1.1 The event is governed by the rules as defined in The Racing Rules of Sailing (RRS).
- 1.2 The Australian Sailing prescriptions and special regulations Part 2 will apply.
- 1.3 Where there is a difference between the Notice of Race (NoR) and the Sailing Instructions (SI) the SI take precedence.
- 1.4 RRS Appendix T (Arbitration) will apply.
- 1.5 RRS 90.3(e) shall apply (Time Limit for changes to race scores).

2. CODE OF CONDUCT

- 2.1 [DP] Competitors and support persons shall comply with reasonable requests from race officials.
- 2.2 [DP] Competitors and support persons shall handle any equipment or place advertising provided by the organizing authority with care, seamanship, in accordance with any instructions for its use and without interfering with its functionality.
- 2.3 Competitors must follow RQYS Club Policies (<https://www.rqys.com.au/membership/rules-and-regulations/>)

3. CHANGES TO RACE DOCUMENTS & SCHEDULE

- 3.1 Any change to the race documents will be posted before 0900 on the day it will take effect, except that any change to the schedule of races will be posted by 2000 on the day before it will take effect.

4. SAILING INSTRUCTIONS

- 4.1 The sailing instructions will be available after 1500 on 10th December 2025 at <https://www.rqys.com.au/event/vx-one-queensland-state-championships/>

5. COMMUNICATION

- 5.1 The official notice board (ONB) is located at <https://www.rqys.com.au/event/vx-one-queensland-state-championships/>.
- 5.2 Secondary to the Official noticeboard "instant messaging" system WhatsApp may be used to notify skippers of timely information, confirmation of days course, Protest Time limit etc. Join the group at <https://chat.whatsapp.com/E1N3ZAVg37iKEYRhGCrMK4>
- 5.3 The race office is located at The RQYS Sailing Office located adjacent to the Main Rigging Lawn, telephone 3396 8666, email sailing@rqys.com.au .
- 5.4 [DP] All boats shall carry a VHF radio capable of communicating on the [VHF maritime mobile band](#).
- 5.5 On the water, the race committee intends to monitor and communicate with competitors on VHF radio Channel 72.
- 5.6 If the race committee displays code flag L alternate VHF channel 77 will be used. This changes NoR 5.5
- 5.7 [DP] While racing, except in an emergency, a boat shall not make voice or data transmissions and shall not receive voice or data communication that is not available to all boats.

6. ELIGIBILITY AND ENTRY

- 6.1 The event is open to all boats of the VX One class.
- 6.2 To be considered an entry in the event, a boat shall complete all registration requirements, pay all fees and helmspersons must be a paid-up Active Members of the AVXOCA or an Associate Member where the entry is paid by an Active Member that is not the skipper.
- 6.3 Boats may enter the event by registering online at <https://app.sailsys.com.au/club/25/entry/series/5079/pricing> by 1630 hours on 06th December 2025.
- 6.4 Late entries may be accepted at the discretion of the Organising Authority.
- 6.5 It is a requirement that each competing boat must declare crew names via the entry system or supply a Crew Declaration to the Organising Authority no later than 1630 hours on 06th December 2025.

7. FEES

- 7.1 Entry fees shall be \$170.00.
- 7.2 Any Refunds will be as per the RQYS Sailing Refunds Policies (<https://www.rqys.com.au/membership/rules-and-regulations/>).

8. CREW LIMITATIONS

- 8.1 The crew shall consist of a minimum of 2 persons. Any member of the crew may act as helmsperson at any time if they meet the provisions of **NoR 6.2**.
- 8.2 No crew member shall be substituted during an event unless express written consent is granted by the Jury or Race Committee. If a crew substitution is requested after close of entries, the total crew weight shall not change by more than 10 kg from the originally nominated crew weight.
- 8.3 Any athlete may **crew** only if they are not or will not be compensated for competing. Nomination of crew shall be deemed to be a declaration of compliance.

9. ADVERTISING

- 9.1 Boats may be required to display advertising chosen and supplied by the organizing authority.

10. INDICATIVE SCHEDULE

- 10.1 The Sailing Instructions schedule shall take precedence.
- 10.2

DATE	EVENT	TIME
Saturday 13 th December 2025	Briefing	0930 hrs
	First Warning Signal	1100 hrs (3 Races)
Sunday 14 th December 2025	First Warning Signal	1100 hrs (3 Races)
	Presentation	ASAP After Racing notified via WhatsApp

- 10.3 On the last scheduled day of racing no warning signal will be made after 1500 hrs.

11. EQUIPMENT INSPECTION

- 11.1 Full measurement is not required, but all boats must conform to the class rules.
- 11.2 The Race Committee reserves the right to inspect any boat prior to or during the regatta to establish whether or not the boat complies with the appropriate measurement restrictions.
- 11.3 [NP] Boats in the VX One class must have the boat's Sail Number (only Numerals required) displayed conspicuously on both the port and starboard sides of the bow. Boats failing to display their Sail Number on both sides of the boat's bow will be scored DNC without a hearing. This changes RRS 60.5(b).

12. VENUE

- 12.1 NoR Attachment A shows the location of the racing areas.
- 12.2 NoR Attachment B shows the plan of the event venue.

13. COURSES

- 13.1 The course to be sailed shall be as described in the Sailing Instructions.

14. PENALTY SYSTEM

- 14.1 RRS 44.1 is amended in that the penalty for breaking a rule of RRS Part 2 shall be a One-Turn Penalty, except the penalty for breaking a rule of RRS Part 2 occurring within the zone as defined in RRS shall be a Two-Turn Penalty.
- 14.2 The penalty, if any, for any infringement of the rules other than RRS Part 2 is at the sole discretion of the protest committee and may be other than disqualification. This changes RRS 63.2(c).

15. SCORING

- 15.1 Three (3) races shall constitute a series.
- 15.2 A maximum of six (6) races shall be held for the regatta.
- 15.3 When fewer than five (5) races have been completed, a boat's series score shall be the total of her race scores.
 - 15.3 (a) When from five (5) to six (6) races have been completed, a boat's series score shall be the total of her races scores excluding her worst score.

16. SUPPORT PERSON VESSELS

- 16.1 All external powerboats coaching/supporting competitors for this event shall register with the Organising Authority, the RQYS Sailing Office, prior to the commencement of racing. Registration entitles boats to a range of benefits including launching facilities, overnight berthing, refuelling facilities and access to racecourse outside of 50m of any competitor or mark between start signal and finish of last boat, except when asked to assist by the Race Committee.
- 16.2 Registration for Support boat can be done on the [online portal](#) OR at the RQYS Sailing Office during Registration. Boats that do not have an identifying sticker shall pay \$10.00 to receive an identifying sticker.
 - 16.2 (a) URL: <https://www.revolutionise.com.au/rqys/events/314829>
 - 16.2 (b) ID Stickers: <https://www.revolutionise.com.au/rqys/product/30940/>
- 16.3 Support and spectator boats that do not register will not be permitted to launch or retrieve from RQYS premises, or berth there overnight; the Organising Authority reserves the right to remove such vessels from their premises.
- 16.4 All support/coach boats must have capability of communicating on VHF channel 72, 77 and 16 for the duration of the regatta.

17. [DP][NP] BERTHING

- 17.1 Boats shall be kept in their assigned places while in the harbour.
- 17.2 Planned Berthing shall be at VIP Docks 2 – 5.
- 17.3 Boats shall follow all berthing directions from the Sailing or Marina Office to the best of their ability.

18. [DP] HAUL-OUT RESTRICTIONS

- 18.1 Boats shall not be hauled out during the event.
- 18.2 Requests for haul out shall be made to the race committee at the first reasonable opportunity.

19. DATA PROTECTION

- 19.1 By participating in an event, a competitor automatically grants to the Organising Authority and the sponsors of the event, the right in perpetuity, to make, use and show, from time to time and at their discretion, any motion pictures, still pictures and live, taped or film television and other reproductions of him/her during the period of the competition for said event in which the competitor participated and in all material related to the said event without compensation.

20. RISK STATEMENT

- 20.1 RRS 3 states: 'The responsibility for a boat's decision to participate in a race or to continue to race is hers alone.' By participating in this event each competitor agrees and acknowledges that sailing is a potentially dangerous activity with inherent risks. These risks include strong winds and rough seas, sudden changes in weather, failure of equipment, boat handling errors, poor seamanship by other boats, loss of balance on an unstable platform and fatigue resulting in increased risk of injury. **Inherent in the sport of sailing is the risk of permanent, catastrophic injury or death by drowning, trauma, hypothermia or other causes.**
- 20.2 All participants are required to comply with any safety provisions as mandated under the Racing Rules of Sailing, the Australian Sailing Special Regulations Part 2 for Off The Beach Boats, and any Class Rules that may apply. The Squadron encourages and supports competitors who believe it is appropriate to exceed the above requirements (such as the wearing of helmets, body armour, impact vests, etc.) if they or their guardian believe that conditions and their personal circumstances warrant. All competitor's attention is drawn to the Risk Statement - Section 20.1 of the Notice of Race.

21. INSURANCE

- 21.1 Each participating boat shall be insured with valid third-party liability insurance with a minimum cover of \$10,000,000AUD per incident or the equivalent.

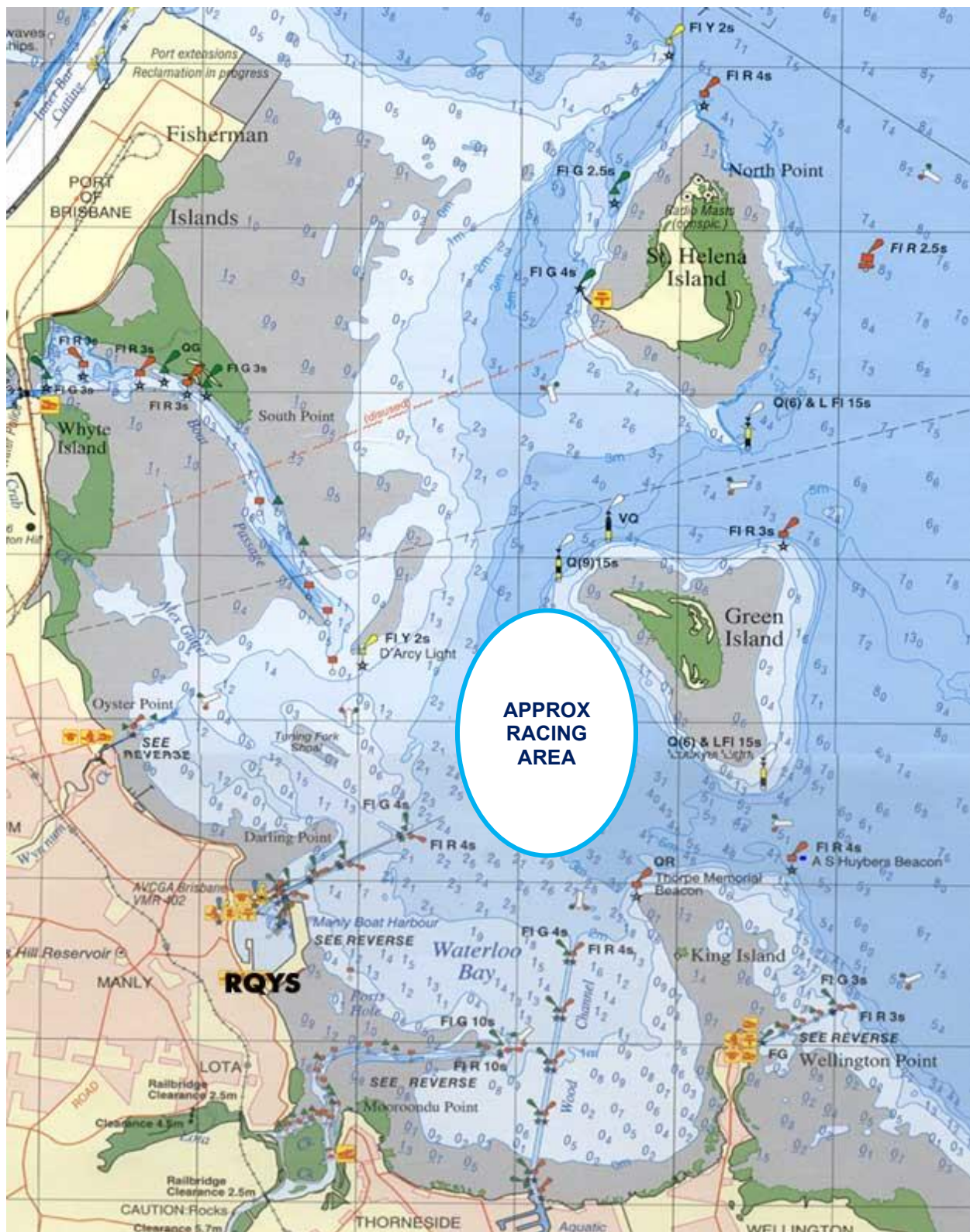
22. PRIZES

- 22.1 Prizes will be given as follows:
 - 22.1 (a) 1st, 2nd and 3rd in Scratch.
 - 22.1 (b) 1st Senior Helmsperson over 60.
 - 22.1 (c) 1st Youth U21 Helmsperson (unless there are not 2 or more U21 helmspersons, in which case it will be awarded to 1st U21 crew)
 - 22.1 (d) 1st Female (helmsperson or crew)
- 22.2 Other prizes may be awarded at the discretion of the Organising Authority

23. FURTHER INFORMATION

- 23.1 For further information please contact:
RQYS Sailing: 07 3396 8666 / sailing@rqys.com.au
578 Royal Esplanade MANLY QLD 4179 AUS
www.rqys.com.au

NoR Attachment A – Approximate Racing Area



NoR Attachment B – Location Information

EMERGENCY CONTACTS

Emergencies	000	
RQYS Sailing Manager	0424 101 732	
Royal Queensland Yacht Squadron	(07) 3396 8666	578 Royal Esplanade, Manly QLD
Manly Coast Guard	(07) 3396 5911	40 Trafalgar St, Manly QLD
Wynnum Police	(07) 3308 8100	82 Pine St, Wynnum QLD
Wynnum Fire & Rescue	(07) 3396 3297	2006 Wynnum Rd, Wynnum West
Brisbane Water Police	(07) 3895 0333	2 Howard Smith Dr, Port of Brisbane

Location, access & communication of Next of Kin Details

Sailing Office & SailSys Databases including information gathered from regatta registrations and/or indemnity forms.

Location of Nearest Emergency Medical Facilities

Redlands Hospital	(07) 3488 3111	21 Weippin St, Cleveland QLD
-------------------	----------------	------------------------------

Location of Nearest Medical Facilities

Wynnum Family Health Service	(07) 3893 0093	116 Edith St, Wynnum QLD
Doctors on Manly Road	(07) 3348 6111	12 Manly Rd, Manly QLD
Silky Oaks Medical Practice	(07) 3396 9855	218 Manly Rd, Manly QLD
Dental On Cambridge	(07) 3348 6661	4/99 Cambridge Parade, Manly QLD

LOCAL SERVICES

Sail Maker

North Sails
1/264 Tingal Rd, Wynnum QLD
3396 5822

Hood Sails
181 Wynnum Esplanade, Wynnum QLD
0419 799 958

Ullman Sails
112 Glenora St, Wynnum QLD
(07) 3348 7245

Chandlery

Muir Marine
453 Esplanade, Manly QLD
(07) 3396 9988

Road Tech Marine
20 Redland Bay Rd, Capalaba QLD
(07) 3914 9543

Boat Building / Repairs – Located at RQYS

AW Marine
049 479 204

David Glenn Boat Building
0412 878 144

JSA Marine
(07) 3348 5682

Physio

Manly Physiotherapy & Pilates
3/443 Esplanade, Manly QLD
(07) 3396 8137

Bounce Physio Birkdale
190 Birkdale Rd, Birkdale QLD
(07) 3822 2122

Pharmacy

Manly Village Pharmacy
9/222 Stratton Terrace, Manly QLD
(07) 3396 8999

Groceries

IGA Manly Village
Cnr Stratton Tce & Cambridge Parade
(07) 3396 1980

Woolworths Wynnum Central
145 Florence St, Wynnum QLD
(07) 3513 4416

Butcher

The Local Butcher
222 Stratton Terrace, Manly QLD
(07) 3396 2195

Bakery

Manly Bakery
222 Stratton Terrace, Manly QLD
(07) 3396 5688

Accommodation

[Manly Marine Cover Motel](#)
Located on the Grounds of RQYS
(07) 3348 1000

Limited Camping Facilities at RQYS
[Limited camping MAY be available](#)
(07) 3396 8666

[The Manly Hotel](#)
54 Cambridge Parade, Manly QLD
(07) 3249 5999

[Waterloo Bay Hotel](#)
75 Berrima St, Wynnum QLD
(07) 3893 2344

[Pelican's Nestle Inn](#)
149 Wynnum Esplanade, Wynnum QLD
(07) 3396 3214

[Wynnum Anchor Motel](#)
14 Adam St, Wynnum QLD
(07) 3396 3037

LOCAL WEATHER TIDE

Local Weather:

The RQYS Weather Station can be found at:

<https://www.rqys.com.au/weather-station/>

The Weather Station records from above the club Bay Lookout.

BOM: Radar: <http://www.bom.gov.au/products/IDR663.loop.shtml>

Marine Forecast:

<http://www.bom.gov.au/qld/forecasts/moreton-bay.shtml>

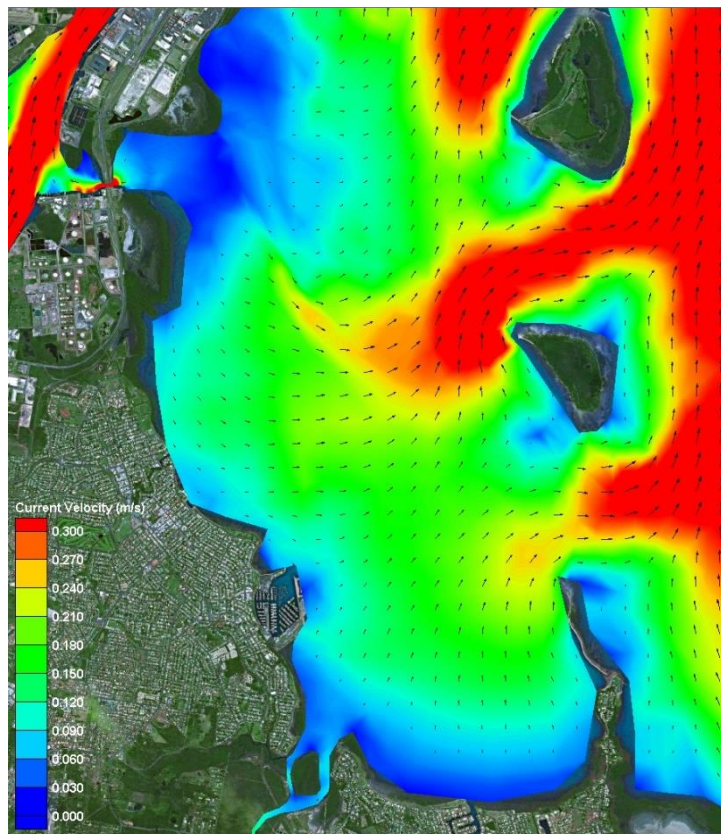
Other Popular forecasts:

Predict Wind: <https://forecast.predictwind.com/table/>

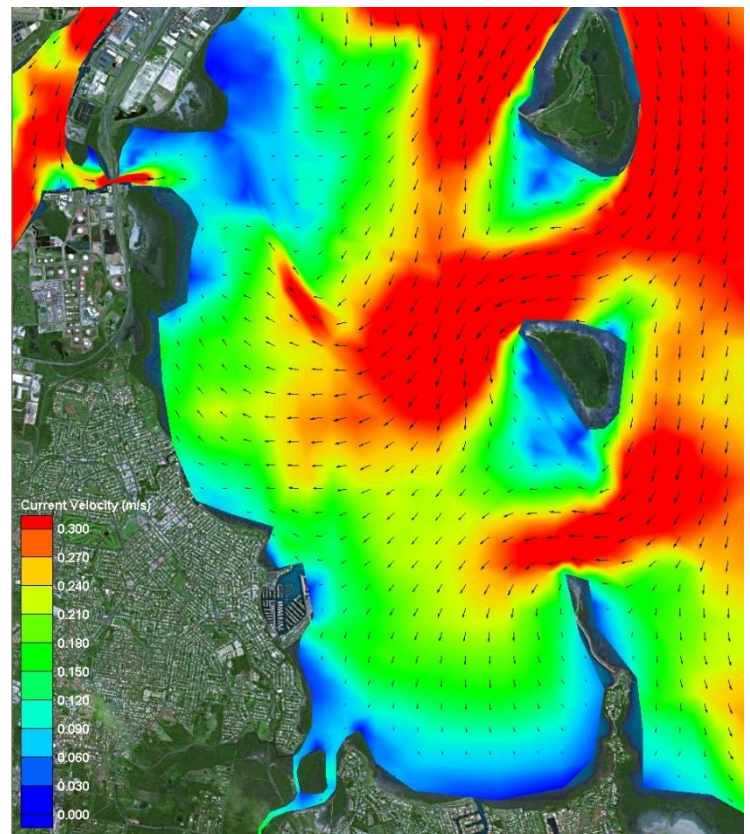
Seabreeze: <https://www.seabreeze.com.au/weather/wind-forecast/brisbane>

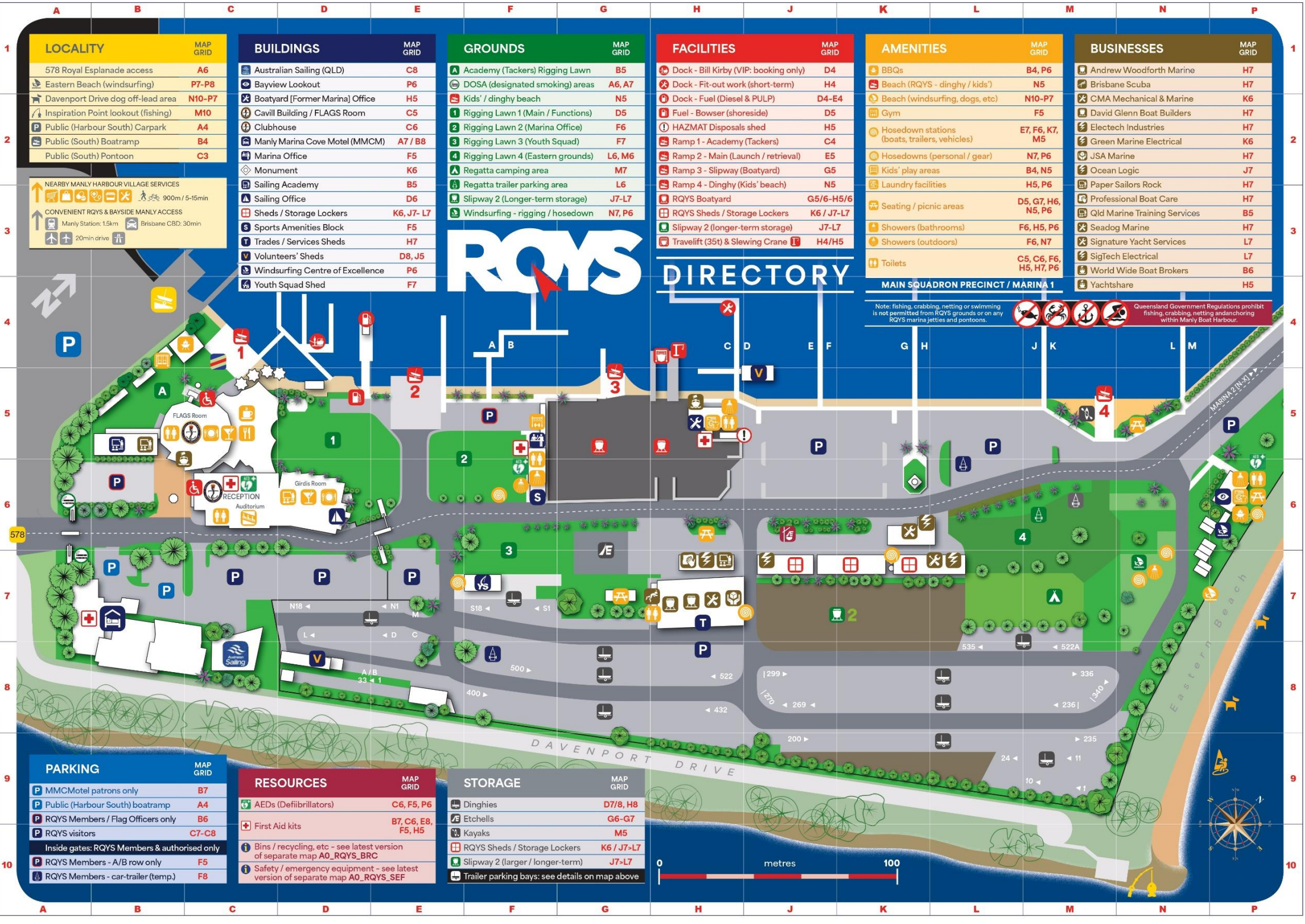
WillyWeather: <https://wind.willyweather.com.au/qld/brisbane/brisbane.html>

Waterloo Bay Ebb



Waterloo Bay Flood





LOCALITY		MAP GRID
578 Royal Esplanade access		A6
Eastern Beach (windsurfing)		P7-P8
Davenport Drive dog off-lead area		N10-P7
Inspiration Point lookout (fishing)		M10
Public (Harbour South) Carpark		A4
Public (South) Boatramp		B4
Public (South) Pontoon		C3

NEARBY MANLY HARBOUR VILLAGE SERVICES

900m / 5-15min

CONVENIENT RQYS & BAYSIDE MANLY ACCESS

Manly Station: 15km

Brisbane CBD: 30min

20min drive

BUILDINGS		MAP GRID
Australian Sailing (QLD)		C8
Bayview Lookout		P6
Boatyard [Former Marina] Office		H5
Cavill Building / FLAGS Room		C5
Clubhouse		C6
Manly Marina Cove Motel (MMCM)		A7 / B8
Marina Office		F5
Monument		K6
Sailing Academy		B5
Sailing Office		D6
Sheds / Storage Lockers		K6, J7- L7
Sports Amenities Block		F5
Trades / Services Sheds		H7
Volunteers' Sheds		D8, J5
Windsurfing Centre of Excellence		P6
Youth Squad Shed		F7

GROUNDS		MAP GRID
Academy (Tackers) Rigging Lawn		B5
DOSA (designated smoking) areas		A6, A7
Kids' / dinghy beach		N5
Rigging Lawn 1 (Main / Functions)		D5
Rigging Lawn 2 (Marina Office)		F6
Rigging Lawn 3 (Youth Squad)		F7
Rigging Lawn 4 (Eastern grounds)		L6, M6
Regatta camping area		M7
Regatta trailer parking area		L6
Slipway 2 (Longer-term storage)		J7-L7
Windsurfing - rigging / hosedown		N7, P6

FACILITIES		MAP GRID
Dock - Bill Kirby (VIP: booking only)		D4
Dock - Fit-out work (short-term)		H4
Dock - Fuel (Diesel & PULP)		D4-E4
Fuel - Bowser (shoreside)		D5
HAZMAT Disposals shed		H5
Ramp 1 - Academy (Tackers)		C4
Ramp 2 - Main (Launch / retrieval)		E5
Ramp 3 - Slipway (Boatyard)		G5
Ramp 4 - Dinghy (Kids' beach)		N5
RQYS Boatyard		G5/6-H5/6
RQYS Sheds / Storage Lockers		K6 / J7-L7
Slipway 2 (longer-term storage)		J7-L7
Travelift (35t) & Slewing Crane		H4/H5

AMENITIES		MAP GRID
BBQs		B4, P6
Beach (RQYS - dinghy / kids')		N5
Beach (windsurfing, dogs, etc)		N10-P7
Gym		F5
Hosedown stations (boats, trailers, vehicles)		E7, F6, K7, M5
Hosedowns (personal / gear)		N7, P6
Kids' play areas		B4, N5
Laundry facilities		H5, P6
Seating / picnic areas		D5, G7, H6, N5, P6
Showers (bathrooms)		F6, H5, P6
Showers (outdoors)		F6, N7
Toilets		C5, C6, F6, H5, H7, P6

BUSINESSES		MAP GRID
Andrew Woodforth Marine		H7
Brisbane Scuba		H7
CMA Mechanical & Marine		K6
David Glenn Boat Builders		H7
Electech Industries		H7
Green Marine Electrical		K6
JSA Marine		H7
Ocean Logic		J7
Paper Sailors Rock		H7
Professional Boat Care		H7
Qld Marine Training Services		B5
Seadog Marine		H7
Signature Yacht Services		L7
SigTech Electrical		L7
World Wide Boat Brokers		B6
Yachtshare		H5

RQYS

DIRECTORY

MAIN SQUADRON PRECINCT / MARINA 1

Note: fishing, crabbing, netting or swimming is not permitted from RQYS grounds or on any RQYS marina jetties and pontoons.

Queensland Government Regulations prohibit fishing, crabbing, netting and anchoring within Manly Boat Harbour.

PARKING		MAP GRID
MMCMotel patrons only		B7
Public (Harbour South) boatramp		A4
RQYS Members / Flag Officers only		B6
RQYS visitors		C7-C8
Inside gates: RQYS Members & authorised only		
RQYS Members - A/B row only		F5
RQYS Members - car-trailer (temp.)		F8

RESOURCES		MAP GRID
AEDs (Defibrillators)		C6, F5, P6
First Aid kits		B7, C6, E8, F5, H5
Bins / recycling, etc - see latest version of separate map A0_RQYS_BRC		
Safety / emergency equipment - see latest version of separate map A0_RQYS_SEF		

STORAGE		MAP GRID
Dinghies		D7/8, H8
Etchells		G6-G7
Kayaks		M5
RQYS Sheds / Storage Lockers		K6 / J7-L7
Slipway 2 (larger / longer-term)		J7-L7
Trailer parking bays: see details on map above		



ROYAL QUEENSLAND YACHT SQUADRON – THE SAILING GATEWAY TO MORETON BAY



Waterloo Bay



~ Founded 1885 ~

rqys.com.au

[/RQYS.Manly](https://www.facebook.com/RQYS.Manly)

[/royal_qld_yacht_squadron](https://www.instagram.com/royal_qld_yacht_squadron)

