



International Optimist Queensland State Championship

6 – 7 December 2025

NOTICE OF RACE (NoR)

ORGANISING AUTHORITY

ROYAL QUEENSLAND YACHT SQUADRON LTD

578 Royal Esplanade, Manly, QLD 4179

In conjunction with

QLD International Optimist Dinghy Association



The notation '[NP]' in a rule of the sailing instructions (SIs) means that a boat may not protest another boat for breaking that rule. This changes RRS 60.1.

The notation '[DP]' in a rule of the sailing instructions (SI's) means that a protest committee can award a penalty less than disqualification (including no penalty) at their discretion. This changes RRS 60.5 and RRS 64.

The notation '[SP]' in a rule of the NoR and/or SIs means that a standard penalty may be applied by the race committee without a hearing per RRS60.5(b)(3).

1. RULES

- 1.1 The event is governed by the rules as defined in The Racing Rules of Sailing.
- 1.2 The Australian Sailing prescriptions and special regulations Part 2 apply.
- 1.3 RRS Appendix T – Arbitration will apply.
- 1.4 Competitors must follow RQYS Club Policies
(<https://www.rqys.com.au/policiesanddocuments/>)

2. SAILING INSTRUCTIONS

- 2.1 The sailing instructions will be available after 1300hrs on 04/12/2025 at
<https://www.rqys.com.au/event/international-optimist-queensland-state-championships-2025/>

3. COMMUNICATION

- 3.1 The online official notice board is located at <https://www.rqys.com.au/event/international-optimist-queensland-state-championships-2025/>
- 3.2 Secondary to the Official noticeboard “instant messaging” system WhatsApp may be used to notify skippers of timely information, confirmation of days course, Protest Time limit etc. Join the group at <https://chat.whatsapp.com/D9nRsFMeRH4DhfwmBVMew>
- 3.3 [DP] While racing, except in an emergency, a boat shall not make voice or data transmissions and shall not receive voice or data communication that is not available to all boats.

4. ELIGIBILITY AND ENTRY

- 4.1 The regatta is open to all boats of the Optimist Class that comply with the Class Rules of the International Optimist Dinghy Association. For the Green Fleet, optimist type boats which do not have a measurement certificate, will be permitted at the discretion of the Race Committee provided they satisfy a safety inspection at registration (refer to item 8.)
- 4.2 The event is open to all boats of the Optimist class that fulfil the eligibility requirements stated below:
 - 4.2 (a) The Regatta is open to competitors who are:
 - A financial member of any state Optimist Associations; and
 - All skippers shall be a financial member of an Australian Sailing affiliated sailing club. International entrants will also need to provide proof of membership to their country's World Sailing Member National Authority.
 - All entrants shall have a birth year of 2010 or later. All ages referred to in this NoR are the sailor's age as at 31 December 2025 otherwise known as 'Opti Age'.
- 4.3 Entry may be made online via www.optiqld.org.au until the close of on-time entries at 2359hrs on the 30 November 2025.
- 4.4 Late entries will be accepted online until 1700 hours on 5 December 2025. Refer to NoR 5.2 for applicable late fees.
- 4.5 To be considered an entry in the event, a boat shall complete all registration requirements and pay all fees.
- 4.6 Allocation of any sailor to Open Fleet, Intermediate Fleet or Green Fleet is subject to the approval of the Organising Authority and may only be varied during the event at the sole discretion of the Race Committee.

If you are unsure which fleet you should be racing in, please refer to the “Which Fleet?” document on the event website - <https://www.optiqld.org.au/the-optimist-dinghy/which-fleet>

4.7 GREEN FLEET

- In Green fleet the emphasis is on fun and the objective of this regatta is to offer younger and less experienced sailors the opportunity to sail and participate at the State Championship without feeling the need or burden to sail in the more competitive and arduous Open and Intermediate Fleets.
- Sailors entering the Green Fleet should be competent at racing.
- Green Fleet racing is intended to align with Open and Intermediate Fleets but starting the Open and Intermediate sailors have launched to head out to their course area. In addition, if the weather forecast or prevailing winds make it unlikely that Green Fleet will race in the afternoon, then the schedule maybe reversed and/or revised.
- In the Green Fleet, equipment used is not required to hold a current measurement certificate (this alters Optimist Class rule 2.4.1) however the following measurement criteria still apply as a minimum:
 1. **Hull:** the hull to be used shall carry a valid WS/ISAF/IYRU plaque.
 2. **Sail:** the sail shall carry a properly allocated and registered sail number and an IODA sail button; and
 3. **Equipment:** shall carry all safety equipment listed in the equipment checklist.
- The Technical/Race Committee may in their sole discretion refuse the entry of a boat which in their opinion does not satisfy the spirit or intent of a one-design international class regatta.
- Racing for Green Fleet will be conducted on a separate course.

5. FEES

5.1 Entry fees are as follows:

5.1 (a)	Open Fleet	\$160.00
5.1 (b)	Intermediate Fleet	\$160.00
5.1 (c)	Green Fleet	\$130.00

5.2 Entries received after 30 November 2025 will incur an additional \$50 per entry.

6. ADVERTISING

6.1 Boats may be required to display advertising chosen and supplied by the organizing authority.

7. INDICATIVE SCHEDULE

7.1 The Sailing Instructions schedule shall take precedence.

7.2

Date	Event	Timing
Friday 05 December	Close of on-time entry	1700
Saturday 06 December	Registration and Safety Checklist	0830 – 1030
	Competitor Briefing	1000
	First Warning (3 Races)	1200
	AGM	1630
	Sausage Sizzle	1700
Sunday 07 December	First Warning (3 Races)	1100
	Presentation	ASAP After Racing

7.3 On the last scheduled day of racing no warning signal will be made after 1500 hrs.

8. EQUIPMENT INSPECTION

- 8.1 Boats may be inspected for safety equipment and measurement compliance at any time during the regatta.
- 8.2 All boats are to complete a Safety Checklist, see NoR Attachment B, at registration for compliance check. Boats which are unable to present their valid measurement book will be required to complete the application for a replacement /registration update as a condition of entry, which is to include IODA Measurement Book and sail measurement certificate.

9. VENUE

- 9.1 NoR Attachment A shows the location of the racing areas.
- 9.2 NoR Attachment C shows the plan of the event venue.
- 9.3 Access to boat drop off and storage on the rigging lawn at the venue will be available at no additional cost from midday Friday 5 December until 1200hrs Monday 8 December.
 - 9.3 (a) Further information regarding access to the club shall be provided in the Sailing Instructions.

10. COURSES

- 10.1 The courses to be sailed shall be as described in the Sailing Instructions.
- 10.2 Tentative courses shall be Trapezoid for open and intermediate fleets & Windward/leeward for green fleet.

11. PENALTY SYSTEM

- 11.1 RRS Appendix P may apply as amended in the Sailing Instructions.

12. SCORING

- 12.1 Three (3) races are required to be completed to constitute a series
 - 12.2 (a) When fewer than four (4) races have been completed, a boat's series score will be the total of her race scores
 - 12.2 (b) When four (4) or more races have been completed, a boat's series score will be the total of her race scores excluding her worst score.

13. SUPPORT PERSON VESSELS

- 13.1 All Support/Coach boats shall register online with the Organising Authority. This can be done at: <https://www.revolutionise.com.au/rqys/events/319831>
- 13.2 All registered boats shall display a number available at registration upon completion of a Support/Coach Boat online registration form. This number must be clearly visible at all times whilst afloat.
- 13.3 All Support/Coach boats must carry a working VHF radio and monitor it on the appropriate course frequency at all times whilst afloat.
- 13.4 Except when requested by the Race Committee to participate in rescue operations, team leaders, coaches, parents and other support persons shall stay outside areas where boats are racing, from the time of the preparatory signal for a race to start until all boats have Finished or the Race Committee signals a postponement or abandonment. The areas the boats are racing in is defined as the area inside the course and within 100 meters of any mark, lay line, starting line, finishing line or any area where any boat that is racing is sailing or may sail.
- 13.5 When the wind is less than 10 knots all team leaders, coaches, parents and other support persons shall not exceed 5 knots within 500m of the area where boats are racing.
- 13.6 When Flag V (with a long sound signal) is displayed on a Committee vessel all support boats are required to remain afloat and assist all sailors until Flag V is lowered. Assistance may include towing boats ashore. Further requirements while Flag V is displayed may be advised in the Sailing Instructions.
- 13.7 The Race Committee or Jury may protest any boat whose support boat is in breach of NoR clause 16. Penalties imposed as a result of a protest under this clause may result in a penalty being imposed on the boat(s) supported by the support boat.

14. BERTHING

- 14.1 Restrictions may be placed on where vessels may be stored or rigged by the RQYS Sailing or Marina office.
- 14.2 Boats may only be stored on the RQYS rigging lawn for the duration of the regatta & 24hrs before/after the regatta, unless otherwise approved by the OA.
- 14.3 No tie down restraints may penetrate the ground deeper than 300mm due to lawn irrigation systems.

15. DATA PROTECTION

- 15.1 By participating in an event, a competitor automatically grants to the Organising Authority and the sponsors of the event, the right in perpetuity, to make, use and show, from time to time and at their discretion, any motion pictures, still pictures and live, taped or film television and other reproductions of him/her during the period of the competition for said event in which the competitor participated and in all material related to the said event without compensation.
- 15.2 Boats may be required to carry cameras, sound equipment or positioning equipment as specified by the Organising Authority. Information from this equipment shall not be used by a boat as evidence in a hearing. This changes RRS 63.4(b).

16. RISK STATEMENT

- 16.1 RRS 3 states: 'The responsibility for a boat's decision to participate in a race or to continue to race is hers alone.' By participating in this event each competitor agrees and acknowledges that sailing is a potentially dangerous activity with inherent risks. These risks include strong winds and rough seas, sudden changes in weather, failure of equipment, boat handling errors, poor seamanship by other boats, loss of balance on an unstable platform and fatigue resulting in increased risk of injury. **Inherent in the sport of sailing is the risk of permanent, catastrophic injury or death by drowning, trauma, hypothermia or other causes.**
- 16.2 All participants are required to comply with any safety provisions as mandated under the Racing Rules of Sailing, the Australian Sailing Special Regulations Part 2 for Off The Beach Boats, and any Class Rules that may apply. The Squadron encourages and supports competitors who believe it is appropriate to exceed the above requirements (such as the wearing of helmets, body armour, impact vests, etc.) if they or their guardian believe that conditions and their personal circumstances warrant. All competitor's attention is drawn to the Risk Statement - Section 16.1 of the Notice of Race.

17. INSURANCE

- 17.1 Each participating boat shall be insured with valid third-party liability insurance with a minimum cover of \$10,000,000AUD per incident or the equivalent.

18. FURTHER INFORMATION

- 18.1 For further information please contact:
RQYS Sailing: 07 3396 8666 / sailing@rqys.com.au
578 Royal Esplanade MANLY QLD 4179 AUS
www.rqys.com.au

Association

Queensland International Optimist Dinghy Association (QIODA)

President- Greg Walker

0459 103 214 / president@optiqld.org.au

The map is a nautical chart of Port Brisbane, Australia. It features several islands and points, including Fisherman Islands, Whyte Island, St Helena Island, North Point, Green Island, King Island, and Wellington Point. The port area is labeled 'PORT OF BRISBANE'. Various navigational aids are marked, such as 'FI Y 2s', 'FIR 4s', 'Q(6) & LFI 15s', and 'AS Huybers Beacon'. Depth soundings are provided throughout the water areas. A blue oval highlights the 'APPROX RACING AREA' near South Point and Green Island. Other labels include 'Port extensions Reclamation in progress', 'Inner Bar Cuttings', 'Oyster Point', 'Turing Fork Shoal', 'Darling Point', 'Manly', 'LOTA', 'Railbridge Clearance 2.5m', 'CAUTION Rocks Clearance 5.7m', 'THORNESIDE', 'Aquatic', and 'WELLINGTON'. The text 'RQYS' is prominently displayed in the lower left quadrant.

NoR Attachment B – Safety Checklist

QIODA OPTIMIST DINGHY SAFETY CHECK LIST

To be completed by Parent/Guardian and presented at Regatta

Sailor's Name

Sail Number

Current Member of QIODA or other state association: Yes / No

Current Insurance Certificate Yes / No

1. Safety Checklist – ALL FLEETS:

Personal Flotation Device (PFD) serviceable and weight appropriate Yes / No

Whistle tied to PFD Yes / No

Tow Rope/Bow Line minimum 8 metres long, and floats Yes / No

Three Buoyancy Bags serviceable and secured Yes / No

Bag Straps Fixed to boat and no deterioration Yes / No

Centreboard can be fixed to boat/preferable to have clip as per main sheet Yes / No

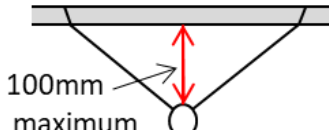

Mast Clamp or tied to boat Yes / No

Paddle on lanyard/elastic secured to the hull Yes / No

Bailer/s 1 litre minimum capacity and tied to boat Yes / No

Boom Strop* Maximum 100mm from boom Yes / No

Mainsheet Clip** Quick release Yes / No

	<p>*To prevent sailors being caught, the strop/bridle must be a maximum of 100mm from the boom.</p>	 <p>**This is the preferred mainsheet clip/ snap shackle as sailors cannot be caught and it is easily released. If you have a different clip – see the event Measurer.</p>
---	---	--

2. OPEN AND INTERMEDIATE FLEETS ONLY:

Boat Measurement Book

Yes / No

Sail Measurement Certificate

Yes / No

Item	Serial Number
Hull (ISAF #)	
Sail (sail button)	
Rudder	
Centreboard	

Item	Serial Number
Mast	
Boom	
Sprit	

Inspected By (Parent/Guardian's Name)

.....

Signature of Parent/Guardian

.....

Date

.....

NoR Attachment C– Location Information

EMERGENCY CONTACTS

Emergencies	000	
RQYS Sailing Manager	0424 101 732	
Royal Queensland Yacht Squadron	(07) 3396 8666	578 Royal Esplanade, Manly QLD
Manly Coast Guard	(07) 3396 5911	40 Trafalgar St, Manly QLD
Wynnum Police	(07) 3308 8100	82 Pine St, Wynnum QLD
Wynnum Fire & Rescue	(07) 3396 3297	2006 Wynnum Rd, Wynnum West
Brisbane Water Police	(07) 3895 0333	2 Howard Smith Dr, Port of Brisbane

Location, access & communication of Next of Kin Details

Sailing Office & SailSys Databases including information gathered from regatta registrations and/or indemnity forms.

Location of Nearest Emergency Medical Facilities

Redlands Hospital	(07) 3488 3111	21 Weippin St, Cleveland QLD
-------------------	----------------	------------------------------

Location of Nearest Medical Facilities

Wynnum Family Health Service	(07) 3893 0093	116 Edith St, Wynnum QLD
Doctors on Manly Road	(07) 3348 6111	12 Manly Rd, Manly QLD
Silky Oaks Medical Practice	(07) 3396 9855	218 Manly Rd, Manly QLD
Dental On Cambridge	(07) 3348 6661	4/99 Cambridge Parade, Manly QLD

LOCAL SERVICES

Sail Maker

North Sails

1/264 Tingal Rd, Wynnum QLD
3396 5822

Hood Sails

181 Wynnum Esplanade, Wynnum QLD
0419 799 958

Ullman Sails

112 Glenora St, Wynnum QLD
(07) 3348 7245

Chandlery

Muir Marine

453 Esplanade, Manly QLD
(07) 3396 9988

Road Tech Marine

20 Redland Bay Rd, Capalaba QLD
(07) 3914 9543

Boat Building / Repairs – Located at RQYS

JSA Marine

(07) 3348 5682

David Glenn Boat Building

0412 878 144

Physio

Manly Physiotherapy & Pilates

3/443 Esplanade, Manly QLD
(07) 3396 8137

Bounce Physio Birkdale

190 Birkdale Rd, Birkdale QLD
(07) 3822 2122

Pharmacy

Manly Village Pharmacy

9/222 Stratton Terrace, Manly QLD
(07) 3396 8999

Groceries

IGA Manly Village

Cnr Stratton Tce & Cambridge Parade
(07) 3396 1980

Woolworths Wynnum Central

145 Florence St, Wynnum QLD
(07) 3513 4416

Butcher

The Local Butcher

222 Stratton Terrace, Manly QLD
(07) 3396 2195

Bakery

Manly Bakery

222 Stratton Terrace, Manly QLD
(07) 3396 5688

Accommodation

[Manly Marine Cover Motel](#)

Located on the Grounds of RQYS
(07) 3348 1000

Limited Camping Facilities at RQYS

[Limited camping MAY be available](#)
(07) 3396 8666

[The Manly Hotel](#)

54 Cambridge Parade, Manly QLD
(07) 3249 5999

[Waterloo Bay Hotel](#)

75 Berrima St, Wynnum QLD
(07) 3893 2344

[Pelican's Nestle Inn](#)

149 Wynnum Esplanade, Wynnum QLD
(07) 3396 3214

[Wynnum Anchor Motel](#)

14 Adam St, Wynnum QLD
(07) 3396 3037

LOCAL WEATHER TIDE

Local Weather:

The RQYS Weather Station can be found at:

<https://www.rqys.com.au/weather-station/>

The Weather Station records from above the club Bay Lookout.

BOM: Radar: <http://www.bom.gov.au/products/IDR663.loop.shtml>

Marine Forecast:

<http://www.bom.gov.au/qld/forecasts/moreton-bay.shtml>

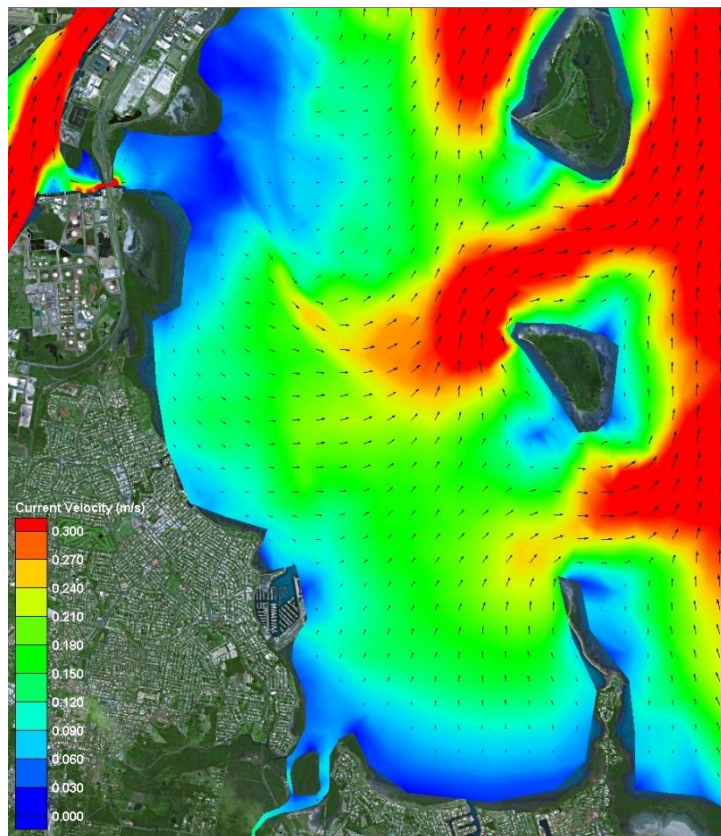
Other Popular forecasts:

Predict Wind: <https://forecast.predictwind.com/table/>

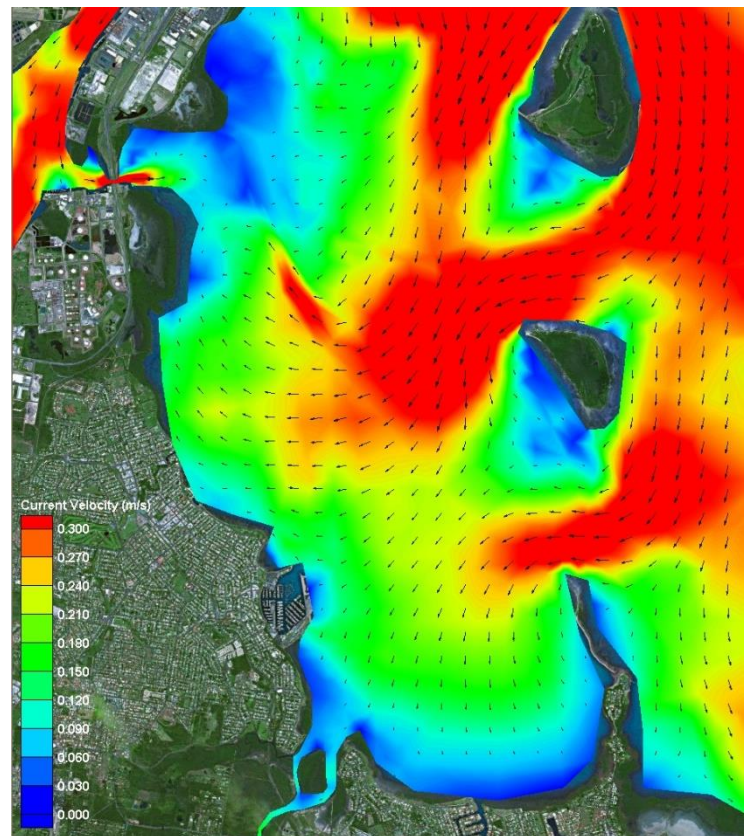
Seabreeze: <https://www.seabreeze.com.au/weather/wind-forecast/brisbane>

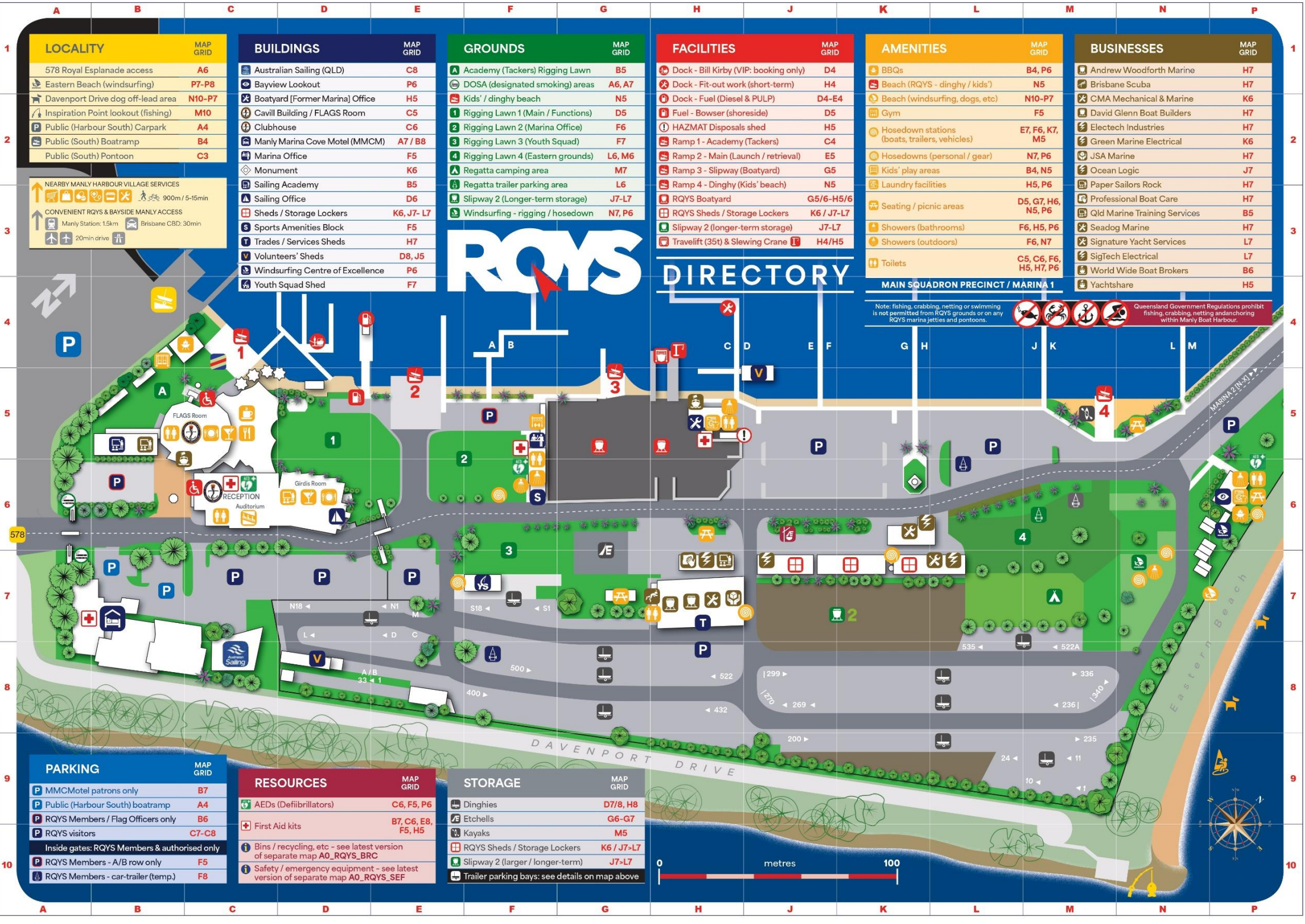
WillyWeather: <https://wind.willyweather.com.au/qld/brisbane/brisbane.html>

Waterloo Bay Ebb



Waterloo Bay Flood





LOCALITY		MAP GRID
578 Royal Esplanade access		A6
Eastern Beach (windsurfing)		P7-P8
Davenport Drive dog off-lead area		N10-P7
Inspiration Point lookout (fishing)		M10
Public (Harbour South) Carpark		A4
Public (South) Boatramp		B4
Public (South) Pontoon		C3

NEARBY MANLY HARBOUR VILLAGE SERVICES

900m / 5-15min

CONVENIENT RQYS & BAYSIDE MANLY ACCESS

Manly Station: 15km

Brisbane CBD: 30min

20min drive

BUILDINGS		MAP GRID
Australian Sailing (QLD)		C8
Bayview Lookout		P6
Boatyard [Former Marina] Office		H5
Cavill Building / FLAGS Room		C5
Clubhouse		C6
Manly Marina Cove Motel (MMCM)		A7 / B8
Marina Office		F5
Monument		K6
Sailing Academy		B5
Sailing Office		D6
Sheds / Storage Lockers		K6, J7- L7
Sports Amenities Block		F5
Trades / Services Sheds		H7
Volunteers' Sheds		D8, J5
Windsurfing Centre of Excellence		P6
Youth Squad Shed		F7

GROUNDS		MAP GRID
Academy (Tackers) Rigging Lawn		B5
DOSA (designated smoking) areas		A6, A7
Kids' / dinghy beach		N5
Rigging Lawn 1 (Main / Functions)		D5
Rigging Lawn 2 (Marina Office)		F6
Rigging Lawn 3 (Youth Squad)		F7
Rigging Lawn 4 (Eastern grounds)		L6, M6
Regatta camping area		M7
Regatta trailer parking area		L6
Slipway 2 (Longer-term storage)		J7-L7
Windsurfing - rigging / hosedown		N7, P6

FACILITIES		MAP GRID
Dock - Bill Kirby (VIP: booking only)		D4
Dock - Fit-out work (short-term)		H4
Dock - Fuel (Diesel & PULP)		D4-E4
Fuel - Bowser (shoreside)		D5
HAZMAT Disposals shed		H5
Ramp 1 - Academy (Tackers)		C4
Ramp 2 - Main (Launch / retrieval)		E5
Ramp 3 - Slipway (Boatyard)		G5
Ramp 4 - Dinghy (Kids' beach)		N5
RQYS Boatyard		G5/6-H5/6
RQYS Sheds / Storage Lockers		K6 / J7-L7
Slipway 2 (longer-term storage)		J7-L7
Travelift (35t) & Slewing Crane		H4/H5

AMENITIES		MAP GRID
BBQs		B4, P6
Beach (RQYS - dinghy / kids')		N5
Beach (windsurfing, dogs, etc)		N10-P7
Gym		F5
Hosedown stations (boats, trailers, vehicles)		E7, F6, K7, M5
Hosedowns (personal / gear)		N7, P6
Kids' play areas		B4, N5
Laundry facilities		H5, P6
Seating / picnic areas		D5, G7, H6, N5, P6
Showers (bathrooms)		F6, H5, P6
Showers (outdoors)		F6, N7
Toilets		C5, C6, F6, H5, H7, P6

BUSINESSES		MAP GRID
Andrew Woodforth Marine		H7
Brisbane Scuba		H7
CMA Mechanical & Marine		K6
David Glenn Boat Builders		H7
Electech Industries		H7
Green Marine Electrical		K6
JSA Marine		H7
Ocean Logic		J7
Paper Sailors Rock		H7
Professional Boat Care		H7
Qld Marine Training Services		B5
Seadog Marine		H7
Signature Yacht Services		L7
SigTech Electrical		L7
World Wide Boat Brokers		B6
Yachtshare		H5

RQYS DIRECTORY

MAIN SQUADRON PRECINCT / MARINA 1

Note: fishing, crabbing, netting or swimming is not permitted from RQYS grounds or on any RQYS marina jetties and pontoons.

Queensland Government Regulations prohibit fishing, crabbing, netting and anchoring within Manly Boat Harbour.

PARKING		MAP GRID
MMCMotel patrons only		B7
Public (Harbour South) boatramp		A4
RQYS Members / Flag Officers only		B6
RQYS visitors		C7-C8
Inside gates: RQYS Members & authorised only		
RQYS Members - A/B row only		F5
RQYS Members - car-trailer (temp.)		F8

RESOURCES		MAP GRID
AEDs (Defibrillators)		C6, F5, P6
First Aid kits		B7, C6, E8, F5, H5
Bins / recycling, etc - see latest version of separate map A0_RQYS_BRC		
Safety / emergency equipment - see latest version of separate map A0_RQYS_SEF		

STORAGE		MAP GRID
Dinghies		D7/8, H8
Etchells		G6-G7
Kayaks		M5
RQYS Sheds / Storage Lockers		K6 / J7-L7
Slipway 2 (larger / longer-term)		J7-L7
Trailer parking bays: see details on map above		



ROYAL QUEENSLAND YACHT SQUADRON – THE SAILING GATEWAY TO MORETON BAY



Waterloo Bay



~ Founded 1885 ~

rqys.com.au

[/RQYS.Manly](https://www.facebook.com/RQYS.Manly)

[/royal_qld_yacht_squadron](https://www.instagram.com/royal_qld_yacht_squadron)

