

THE RQYS YACHT RACING COURSE BOOK

THE RQYS YACHT RACING COURSE BOOK 2025/26

FOR RQYS YACHT AND CATAMARAN BAY RACING



Administered by the Royal Queensland Yacht Squadron (RQYS)
578 Royal Esplanade, MANLY, Queensland 4179
(07) 3396 8666 | sailing@rqys.com.au

Course Book 2025/26 Revisions

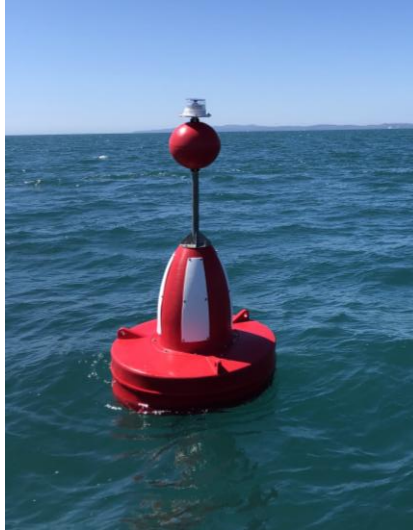
[illegible]

DESIGNATED MARKS USED FOR RACING

Description		Approximate Position	
Start/Finish – Inside Waterloo Bay East of the Manly Boat Harbour Leads			
CJP	Crawford James Pattison Beacon (Nth Cardinal)	27°24.9S	153°13.6E
CY	Yellow Buoy SE of Cleveland Point	27°30.9S	153°18.2E
DL	Douglas Light	27°29.5S	153°22.8E
EE	Eric Early Beacon	27°37.4S	153°24.2E
EPB	Empire Point Beacon	27°29.2S	153°16.6E
GIB	Goat Island Beacon Fl Yellow 2s	27°31.1S	153°23.1E
GIR	Red Beacon NE of Green Island	27°24.8S	153°14.6E
HBG	Green Beacon (Fl G 2.5s) W Horseshoe Bay	27°31.3S	153°21.2E
HBV	Fl Y 4s Eastern End Horseshoe Bay	27°30.3S	153°22.4E
HL	Hanlon Light	27°28.2S	153°21.0E
HYR	Huybers Beacon	27°26.9S	153°14.7E
JRB	Jeay's Reef Buoy - North Cardinal Beacon	27°18.8S	153°14.9E
LLS	Lockyer Light South Cardinal Beacon	27°26.4S	153°14.5E
LM1	Bay Laid Mark, located on a bearing from the Start Boat and a nominated distance OR at a GPS position Communicated by the RC from the Start Boat.		
MBG	Green Beacon off Maroom Bank	27°27.03S	153°19.5E
MHB	Merv Hazell Beacon	27°33.6S	153°24.1E
MIE	East Cardinal Beacon off Mud Island	27°20.2S	153°16.7E
MIGW	Mud Island Green	27°20.5S	153°13.6E
MISG	Mud Island Southern Green	27°21.4S	153°15.4E
MIWG	2 x West Cardinal Beacons off Mud Island	27°19.9S	153°14.0E
ML	Myora Light	27°28.4S	153°24.3E
NJW	Norman J Wright Beacon (West Cardinal)	27°25.1S	153°13.2E
NRB	Green Beacon (Fl G 4s) Naval Reserve Banks	27°27.6S	153°20.5E
OMM	Outer Measured Mile	27°15.0S	153°15.1E
PIG	Green Beacon West of Peel Island	27°30.26S	153°19.4E
PPG	Green Beacon (Fl G 2.5s) North of Potts Point	27°34.3S	153°21.8E
SAY	Sand Hills Yellow	27°16.86S	153°22.9E
SHN	North Cardinal Beacon St Helena Island	27°22.2S	153°14.2E
SHR	Red Buoy East of St Helena Island	27°23.2S	153°15.2E
SHS	South Cardinal Beacon St Helena Island	27°24.4S	153°14.4E
SWR	Green Beacon (QG) S-W Rocks	27°31.3S	153°20.6E
TBR	Thorpe Beacon NW of King Island	27°27.1S	153°13.7E

DESIGNATED FIXED MARKS USED FOR RACING

***As of the 2023/24 Season MSQ has laid 4 fixed marks referred to as “Rec Marks”
The “Rec Marks” are floating (Red & White) Safe Water Marks.***



Description		Approximate Position	
SHRM	Sand Hills Rec Mark	27°22.6S	153°18.1E
GERM	Green Island East Rec Mark	27°25.6S	153°15.5E
HBRM	Hope Banks Rec Mark	27°25.8S	153°17.8E
PRM	Peel NW Rec Mark	27°27.9S	153°18.4E

THE RQYS YACHT RACING COURSE BOOK

Course Number	Course Marks (Rounding Side)
1A	Start – NJW (S) – CJP (S) – SHS (P) – SHR (S) – HBRM (S) – SHR (S) – HBRM (S) – LLS (S) - Finish
1B	Start – NJW (S) – CJP (S) – SHS (P) – SHR (S) – HBRM (S) – LLS (S) - Finish
1C	Start – NJW (S) – CJP (S) – GIR (S) – HBRM (S) – LLS (S) - Finish
2A	Start – NJW (S) – CJP (S) – SHS (P) – SHR (S) – HBRM (S) – GERM (S) – HBRM (S) – LLS (S) - Finish
2B	Start – NJW (S) – CJP (S) – GIR (S) – HBRM (S) – GERM (S) – HBRM (S) – LLS (S) - Finish
2C	Start – NJW (S) – CJP (S) – GIR (S) – HBRM (S) – LLS (S) - Finish
3A	Start – LLS (P) – HBRM (S) – CY (P) – HBRM (P) – LLS (S) – Finish
3B	Start – HYR (S) – CY (P) – HYR (P) – Finish
3C	Start – HYR (S) – PRM (S) – HYR (P) – Finish
4A	Start – LLS (P) – MBG (S) – LLS (S) – Finish
4B	Start – LLS (P) – HBRM (S) – LLS (S) – Finish
5A	Start – LLS (P) – HBRM (S) – EP (S) – HBRM (S) – EP (S) – HYR (P) - Finish
5B	Start – LLS (P) – HBRM (S) – EP (S) – HYR (P) - Finish
5C	Start – HYR (S) – EP (S) – HYR (P) - Finish
6A	Start – NJW (S) – CJP (S) – SHS (P)/GIR (S) – LM1 (P) – SHS (S)/GIR (P) – CJP (P) – NJW (P) – Finish
6B	Start – NJW (S) – CJP (S) – SHS (P)/GIR (S) – LM2 (P) – SHS (S)/GIR (P) – CJP (P) – NJW (P) – Finish
6C	Start – NJW (S) – CJP (S) – SHS (P)/GIR (S) – LM3 (P) – SHS (S)/GIR (P) – CJP (P) – NJW (P) – Finish
7A	Start – HYR (S) – PIG (S) – CY (S) – HYR (P) – Finish
7B	Start – HYR (S) – PIG (S) – HYR (P) – Finish
7C	Start – HYR (S) – EP (P) – HYR (P) – Finish
8, 9 & 10	Reserved for Future Use
11A	Start – NJW (S) – CJP (S) – GIR (S) – HBRM (S) – HL (S) – HBY (P) – HBG (S) – SWR (S) – HYR (P) – Finish
11B	Start – NJW (S) – CJP (S) – GIR (S) – HBRM (S) – MBG (S) – PRM (S) – HYR (P) – Finish
11C	Start – NJW (S) – CJP (S) – GIR (S) – HBRM (S) – MBG (S) – LLS (S) – Finish
12A	Start – HYR (S) – HL (S) – HBY (P) – HBG (S) – SWR (S) – HYR (P) – Finish
12B	Start – HYR (S) – MBG (S) – EP (S) – HYR (P) – Finish
12C	Start – HYR (S) – MBG (S) – HYR (P) – Finish
13A	Start – NJW (S) – CJP (S) – GIR (S) – HBRM (P) – SHR (P) – PIG (S)* – HYR (P) – Finish *When reversed PIG shall remain to Starboard
13B	Start – NJW (S) – CJP (S) – GIR (S) – PIG (S)* – HYR (P) – Finish *When reversed PIG shall remain to Starboard
13C	Start – NJW (S) – CJP (S) – GIR (S) – GERM (S) – EP (S) – HYR (P) – Finish
14A	Start – LLS (P) – HBRM (P) – MIE (P) – CY (P) – HBRM (P) – LLS (S) – Finish
14B	Start – LLS (P) – HBRM (P) – MIE (P) – EP (P) – HBRM (P) – LLS (S) – Finish
14C	Start – LLS (P) – HBRM (P) – MIE (P) – GERM (S) – LLS (S) – Finish
15A	Start – NJW (S) – CJP (S) – GIR (S) – HBRM (P) – MIWG (S) – JRB (S) – MIE (S) – HBRM (S) – LLS (S) – Finish
15B	Start – NJW (S) – CJP (S) – GIR (S) – HBRM (P) – MISG (P) – GERM (S) – LLS (S) – Finish
15C	Start – NJW (S) – CJP (S) – GIR (S) – HBRM (P) – SHR (P) – GERM (S) – LLS (S) – Finish
16A	Start – NJW (S) – CJP (S) – SHS (P) – SAY (P) – MIE (P) – HBRM (S) – LLS (S) – Finish
16B	Start – NJW (S) – CJP (S) – SHS (P) – SHRM (P) – SHR (P) – HBRM (S) – LLS (S) – Finish
16C	Start – NJW (S) – CJP (S) – SHS (P) – SHRM (S) – GERM (P) – LLS (S) - Finish
17A	Start – NJW (S) – CJP (S) – SHS (P) – SAY (P) – SHS (S) – CJP (P) – NJW (P) – Finish
17B	Start – NJW (S) – CJP (S) – SHS (P) – SHR (S) – SHRM (S) – SHS (S) – CJP (P) – NJW (P) – Finish
17C	Start – NJW (S) – CJP (S) – SHS (P) – SHRM (S) – SHS (S) – CJP (P) – NJW (P) – Finish
18A	Start – NJW (S) – CJP (S) – SHS (P) – SHR (S) – GERM (S) – LLS (S) – Finish
18B	Start – NJW (S) – CJP (S) – GIR (S) – HBRM (S) – LLS (S) - Finish
18C	Start – NJW (S) – CJP (S) – GIR (S) – GERM (S) – LLS (S) - Finish
19A	Start – NJW (S) – CJP (S) – SHS (P) – SHR (P) – MIWG (S) – JRB (S) – MIE (S) – SHR (S) – SHS (S) – CJP (P) – NJW (P) – Finish
19B	Start – NJW (S) – CJP (S) – SHS (P) – SHR (P) – MISG (S) – SHR (S) – SHS (S) – CJP (P) – NJW (P) – Finish
20A	Start – LLS (P) – HBRM (S) – PRM (S) – HBRM (P) – LLS (S) – Finish
20B	Start – LLS (P) – HBRM (S) – PRM (S) – HYR (P) – Finish
20C	Start – LLS (P) – HBRM (S) – LLS (S) – Finish
21A	Start – NJW (S) – CJP (S) – GIR (S) – HBRM (S) – GERM (S) – GIR (P) – CJP (P) – NJW (P) – Finish
21B	Start – NJW (S) – CJP (S) – GIR (S) – HBRM (S) – GIR (P) – CJP (P) – NJW (P) – Finish
22A	Start – NJW (S) – CJP (S) – GIR (S) – GERM (P) – GIR (P) – CJP (P) – NJW (P) – LLS (P) – GERM (S) – LLS (S) – Finish
22B	Start – LLS (P) – GERM (S) – LLS (S) – NJW (S) – CJP (S) – GIR (S) – GERM (P) – GIR (P) – CJP (P) – NJW (P) – Finish

THE RQYS YACHT RACING COURSE BOOK

Course Number	Course Marks (Rounding Side)
23A	Start – NJW (S) – CJP (S) – SHS (P) – SHR (S) – HBRM (S) – GIR (P) – CJP (P) – NJW (P) – Finish
23B	Start – NJW (S) – CJP (S) – SHS (P) – SHR (S) – GERM (S) – GIR (P) – CJP (P) – NJW (P) – Finish
23C	Start – NJW (S) – CJP (S) – SHS (P) – SHR (S) – SHS (S) – CJP (P) – NJW (P) – Finish
24A	Start – LLS (P) – GERM (S) – PRM (S) – GERM (S) – PRM (S) – HYR (P) – Finish
24B	Start – LLS (P) – GERM (S) – PRM (S) – HYR (P) – Finish
24C	Start – LLS (P) – GERM (S) – HBRM (S) – LLS (S) – Finish
25A	Start – LLS (P) – GERM (P) – SHR (S) – HBRM (S) – LLS (S) – Finish
25B	Start – LLS (P) – GERM (P) – SHR (S) – GERM (S) – LLS (S) – Finish
26B	Start – NJW (S) – CJP (S) – SHS (P) – SHR (S) – HBRM (S) – LLS (S) – Finish

Course Book Supplementary Sailing Instructions:

1 – The Use of an “X” Mark (a mark set at 90 degrees to the Start Line, usually upwind) is indicated by the flying of a Green or Red flag on the Start Boat, this flag indicates the rounding of the “X” Mark and shall be inserted in the Course Mark list in between the Start and the first mark of the course.

2 – All Starts are assumed to be inside Waterloo Bay. Where the RC wishes to run a Start East of Green Island the Race Committee may advance the course up to the point at which the Start Line leaves Waterloo Bay by flying an L flag and indicating the next mark on a board on the back of the boat. In this instance the RC need only signal the course and the next mark of the course, all previous marks are to be disregarded. [E.g. Course 11 would become Start - ~~NJW (S)~~ – ~~CJP (S)~~ – ~~GIR (S)~~ – HBRM (S) – HL (S) – HBY (P) – HBG (S) – SWR (S) – HYR (P) – Finish]

3 – Where Course Book SI's 1 and 2 are to operate together the Board need only indicate the next Fixed or Laid Mark, the X mark being indicated by the flying of Green or Red flags.

4 – Where the Race Committee wish to run these courses as a “Reverse” they shall indicated the course number followed by a prominent R and indicate as such on Radio. The course shall observe all marks in the opposite order and with the opposing rounding.

EXAMPLE Course 1: Start – NJW (S) – CJP (S) – SHS (P) – SHR (S) – HBRM (S) – SHR (S) – HBRM (S) – LLS (S) – Finish.

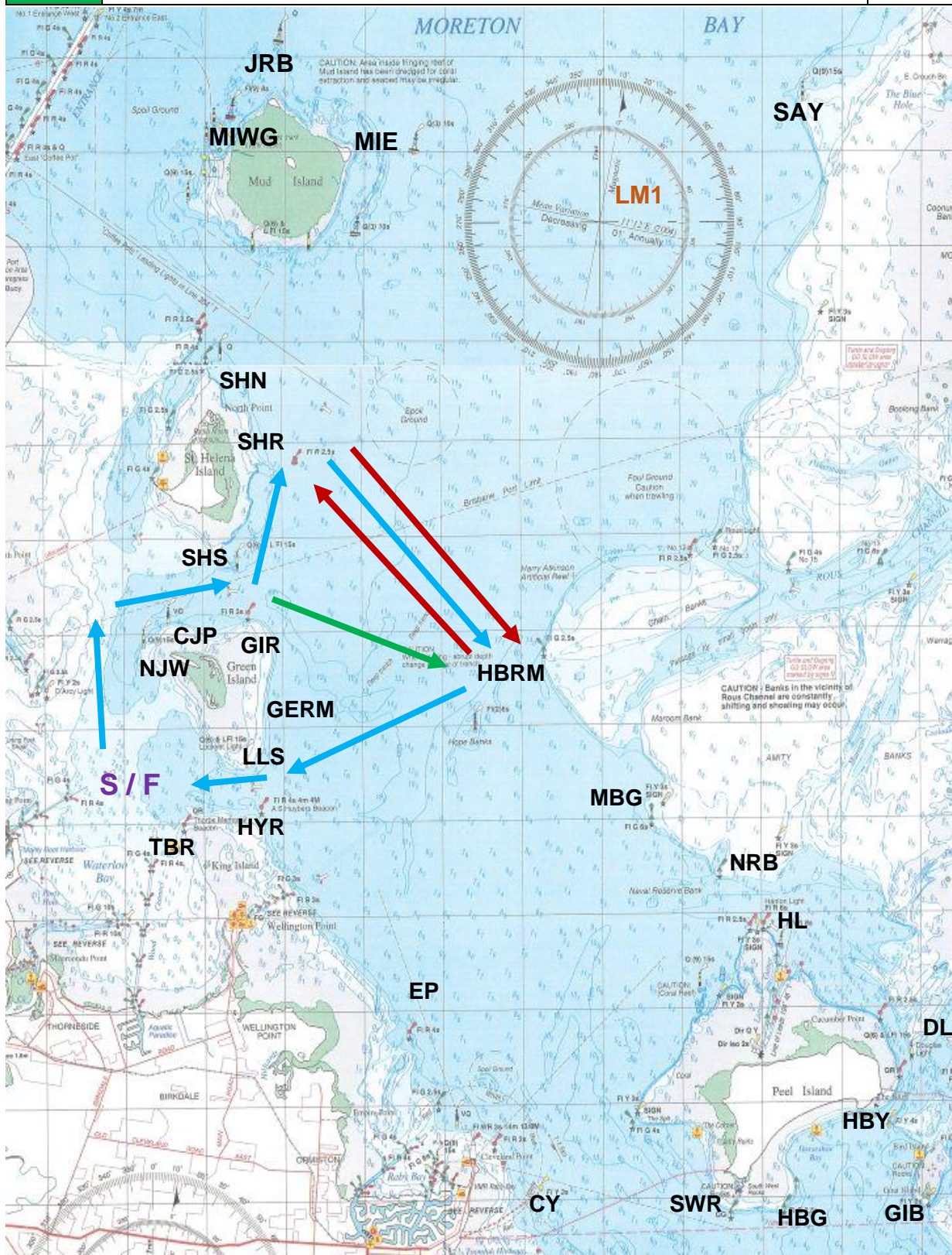
Course Variants (A, B and C):

Standard Course Variant Colors: **A Variant – RED** | **B Variant – BLUE** | **C Variant – GREEN**

Course arrows only display a different color when differentiating from course variant B (blue).

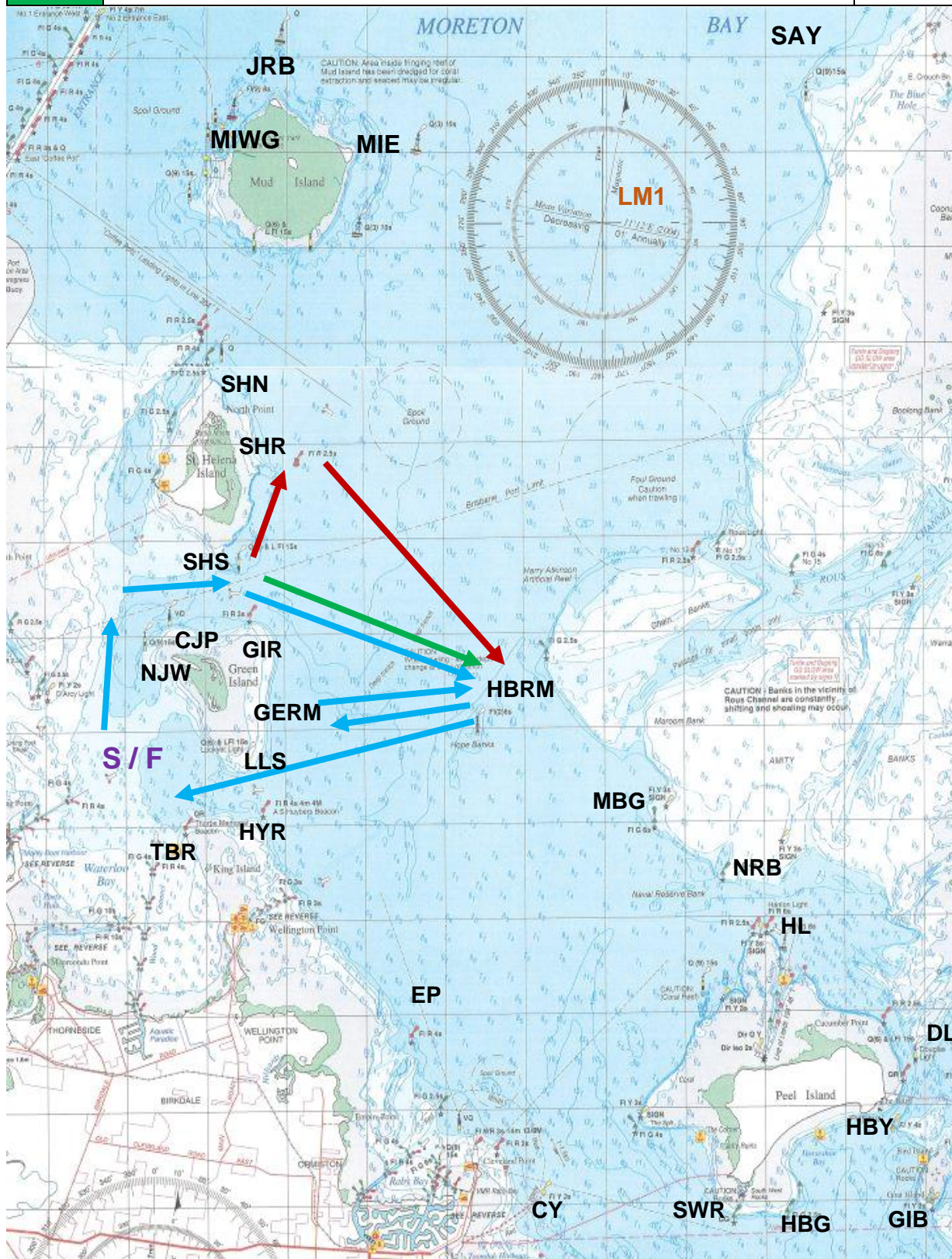
THE RQYS YACHT RACING COURSE BOOK

1A	Start – NJW (S) – CJP (S) – SHS (P) – SHR (S) – HBRM (S) – SHR (S) – HBRM (S) – LLS (S) – Finish	18.1
1B	Start – NJW (S) – CJP (S) – SHS (P) – SHR (S) – HBRM (S) – LLS (S) – Finish	11.8
1C	Start – NJW (S) – CJP (S) – GIR (S) – HBRM (S) – LLS (S) – Finish	9.7



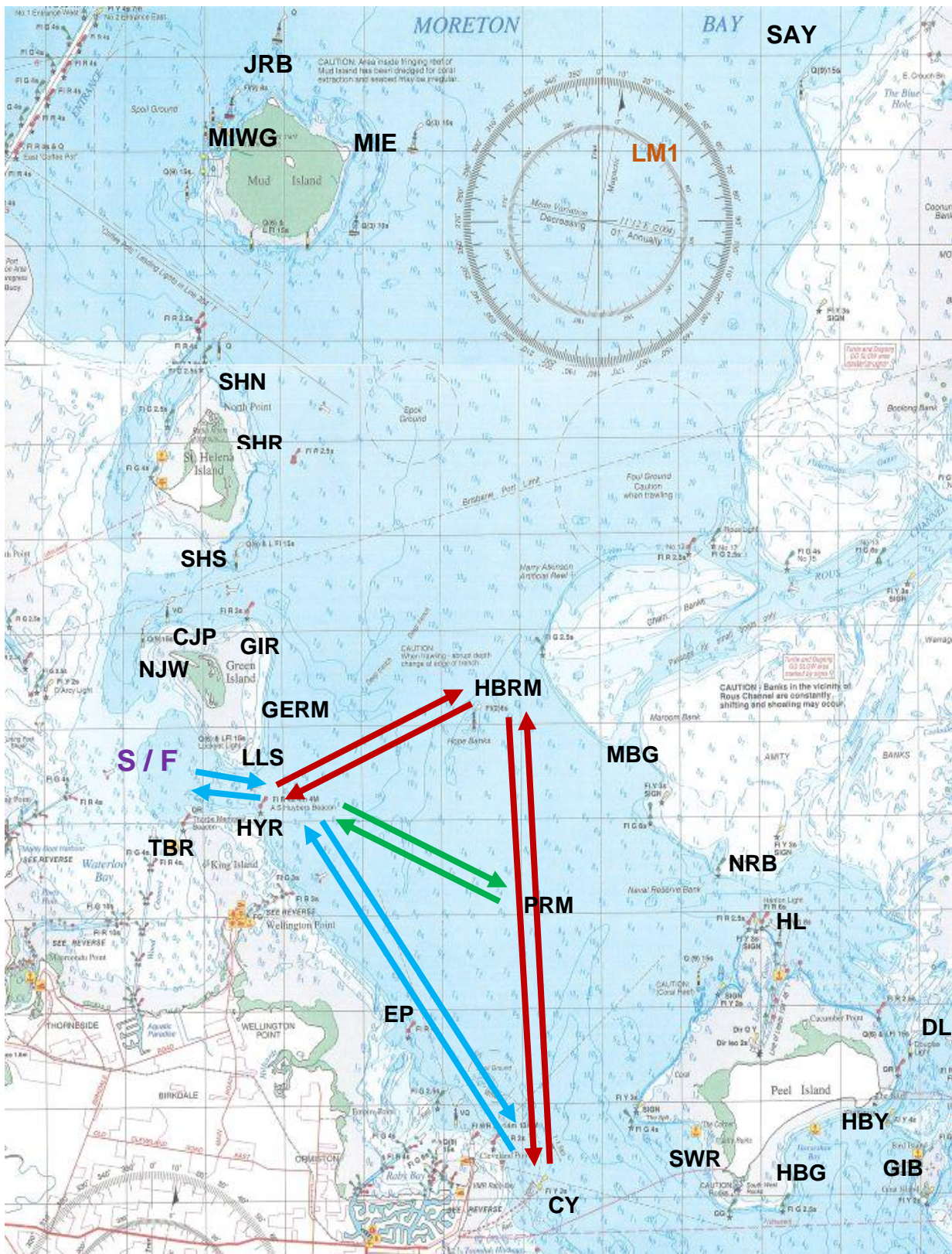
THE RQYS YACHT RACING COURSE BOOK

2A	Start – NJW (S) – CJP (S) – SHS (P) – SHR (S) – HBRM (S) – GERM (S) – HBRM (S) – LLS (S) – Finish	15.7
2B	Start – NJW (S) – CJP (S) – GIR (S) – HBRM (S) – GERM (S) – HBRM (S) – LLS (S) – Finish	14
2C	Start – NJW (S) – CJP (S) – GIR (S) – HBRM (S) – LLS (S) – Finish	9.7



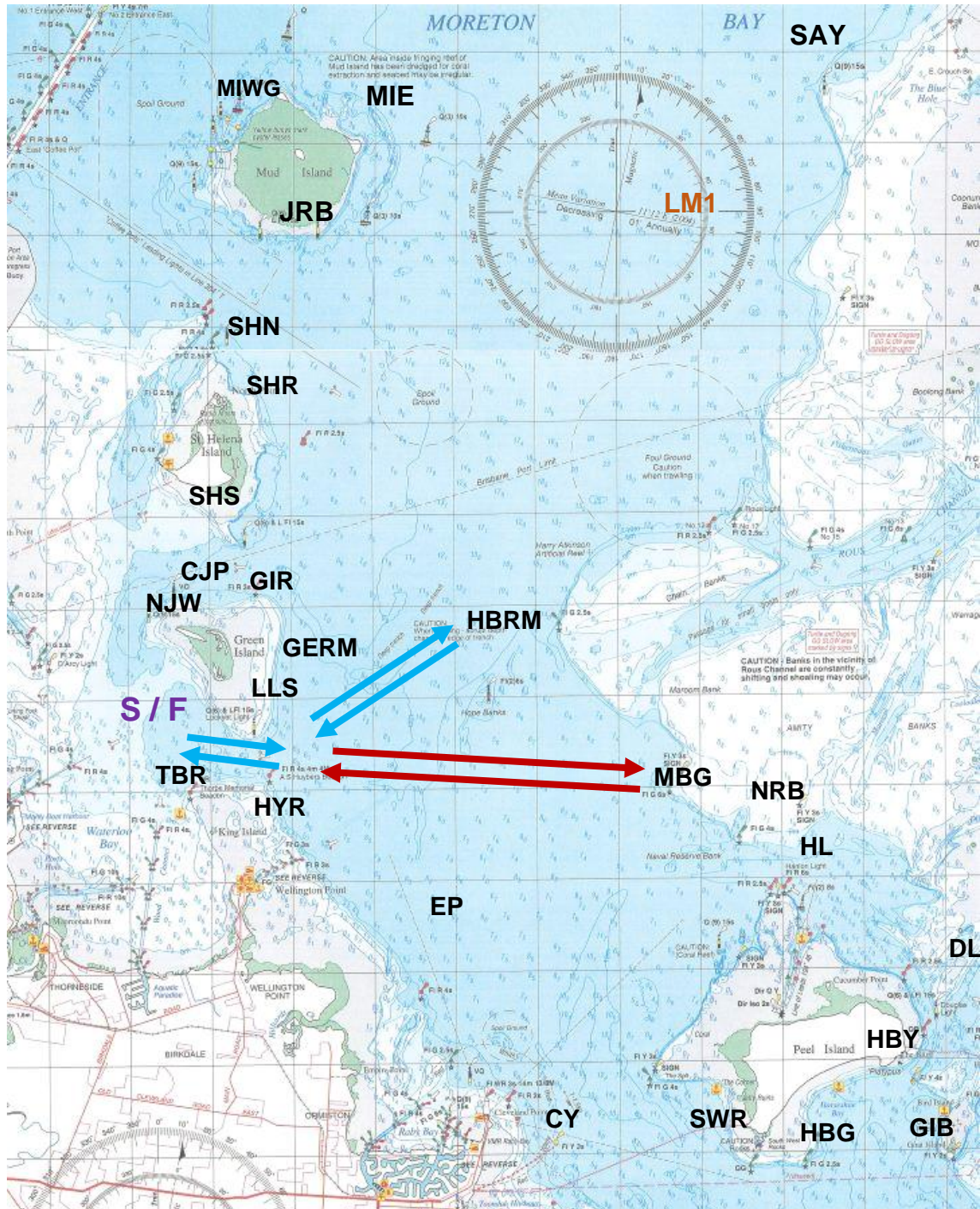
THE RQYS YACHT RACING COURSE BOOK

3A	Start - LLS (P) – HBRM (S) – CY (P) – HBRM (P) – LLS (S) – Finish	16.8
3B	Start - HYR (S) – CY (P) – HYR (P) – Finish	
3C	Start - HYR (S) – PRM (S) – HYR (P) – Finish	



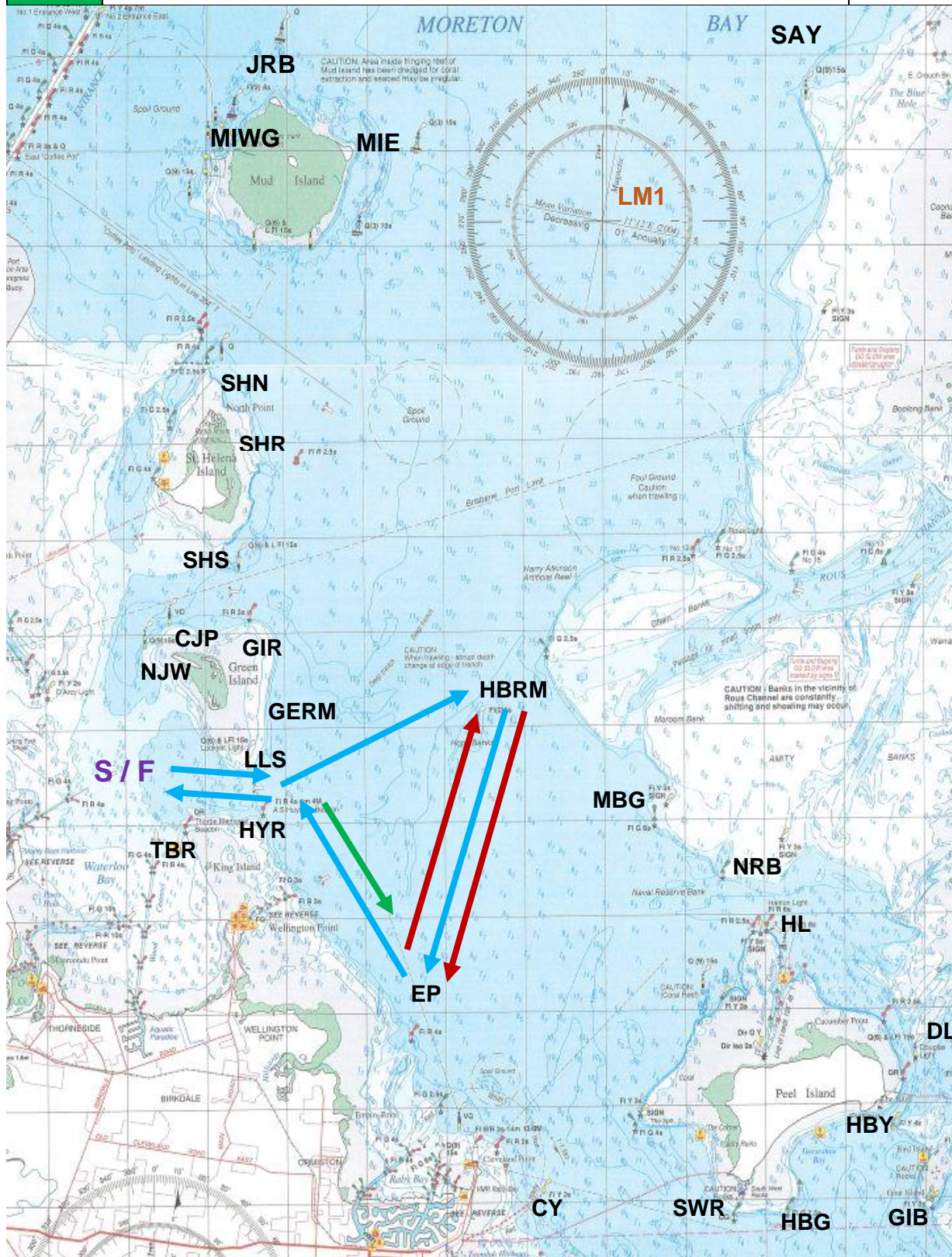
THE RQYS YACHT RACING COURSE BOOK

4A	Start - LLS (P) – MBG (S) – LLS (S) – Finish	11.6
4B	Start - LLS (P) – HBRM (S) – LLS (S) – Finish	8



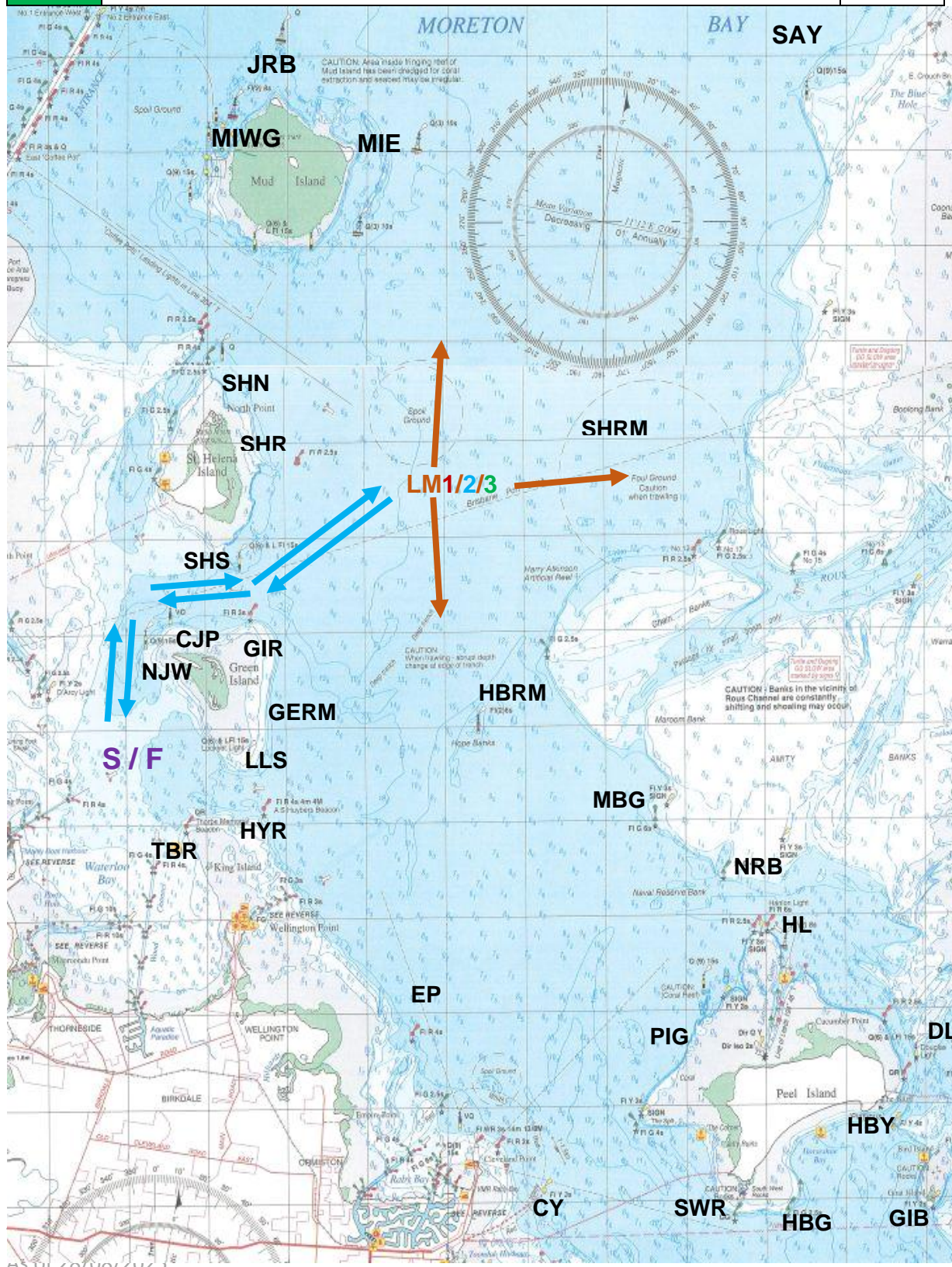
THE RQYS YACHT RACING COURSE BOOK

5A	Start – LLS (P) – HBRM (S) – EP (S) – HBRM (S) – EP (S) – HYR (P) – Finish	17.8
5B	Start – LLS (P) – HBRM (S) – EP (S) – HYR (P) – Finish	11.9
5C	Start – HYR (S) – EP (S) – HYR (P) – Finish	8.4



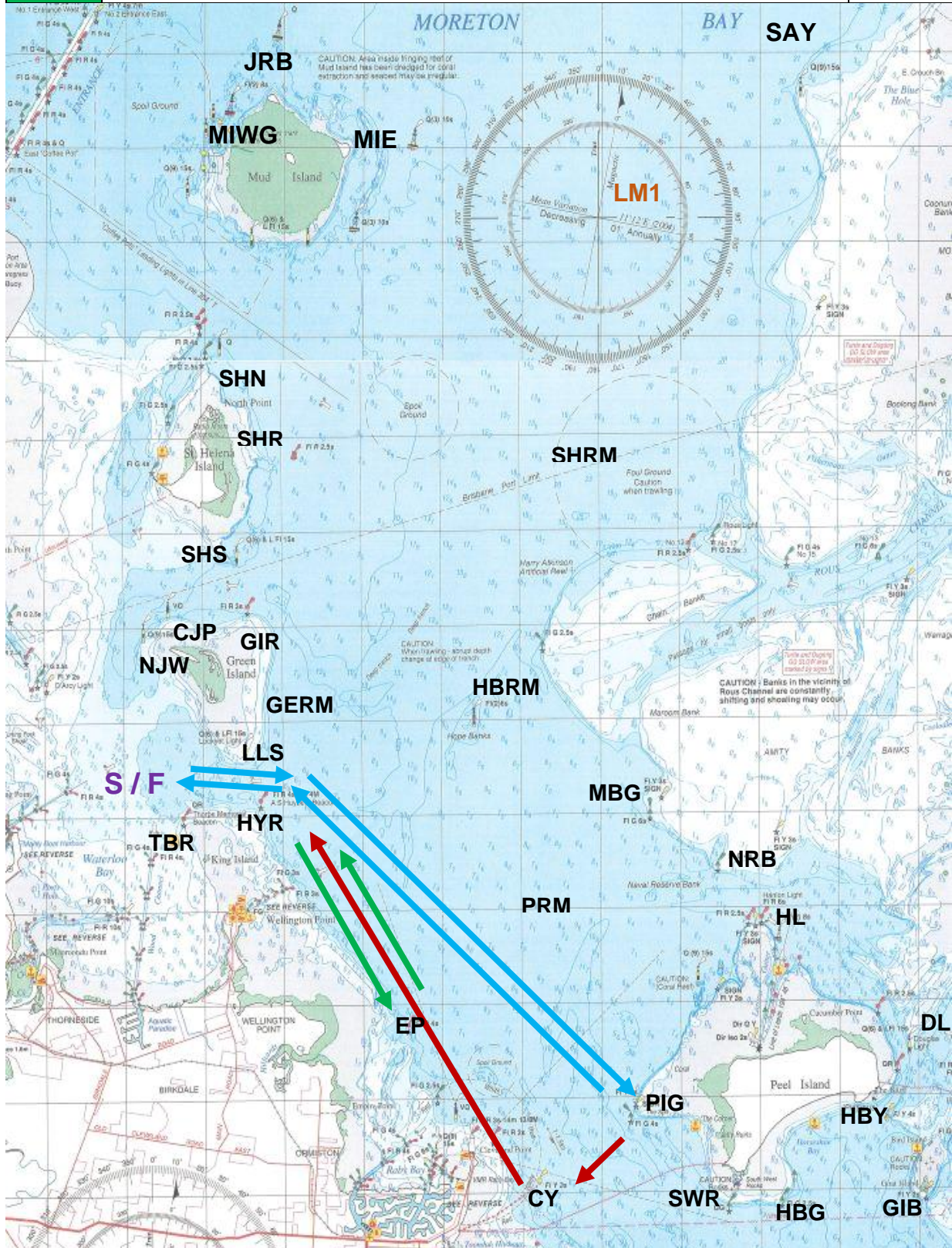
THE RQYS YACHT RACING COURSE BOOK

6A	Start - NJW (S) – CJP (S) – SHS (P)/GIR (S) – LM1 (P) – SHS (S)/GIR (P) – CJP (P) – NJW (P) – Finish	13.2
6B	Start - NJW (S) – CJP (S) – SHS (P)/GIR (S) – LM2 (P) – SHS (S)/GIR (P) – CJP (P) – NJW (P) – Finish	
6C	Start - NJW (S) – CJP (S) – SHS (P)/GIR (S) – LM3 (P) – SHS (S)/GIR (P) – CJP (P) – NJW (P) – Finish	



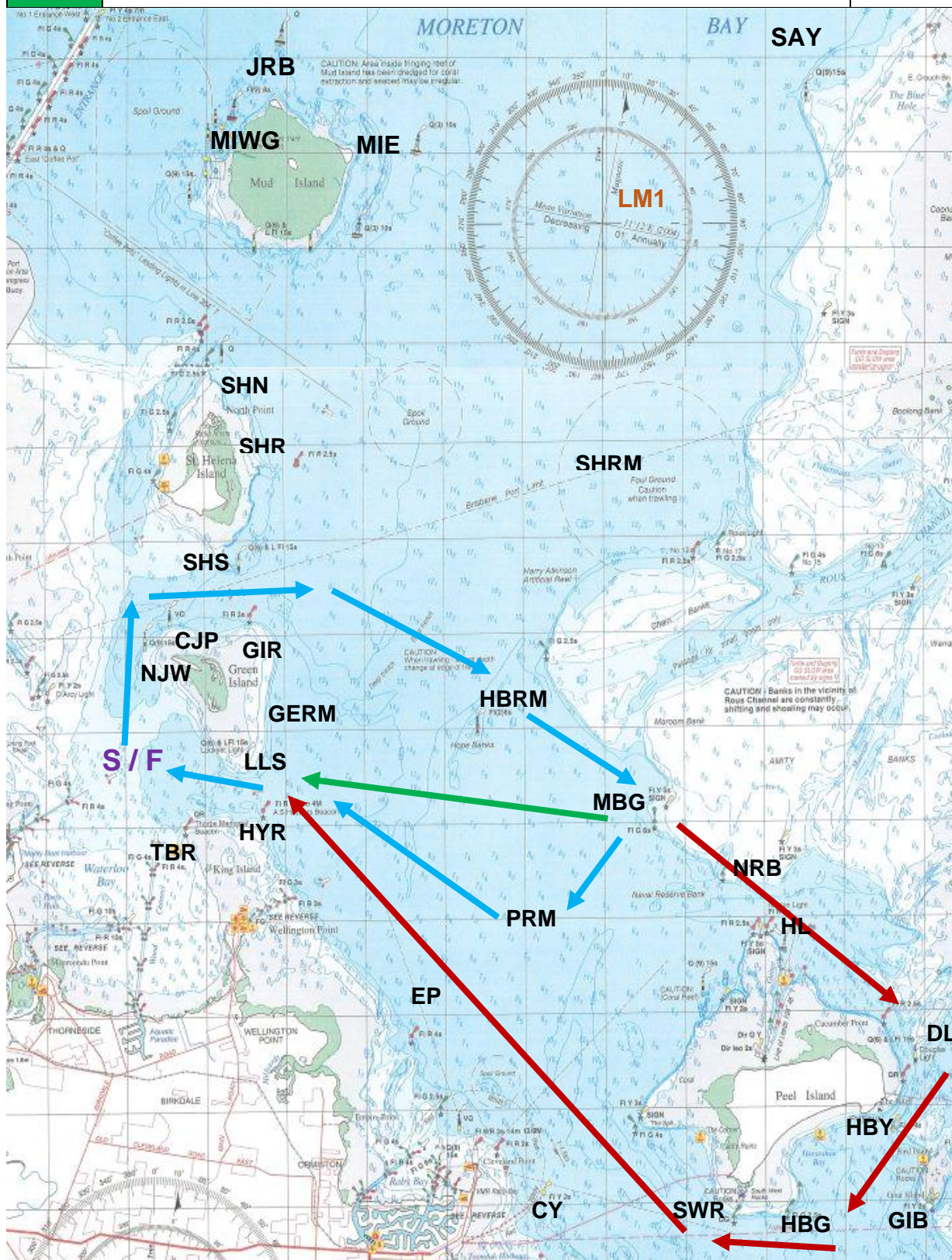
THE RQYS YACHT RACING COURSE BOOK

7A	Start - HYR (S) – PIG (S) – CY (S) – HYR (P) – Finish	14
7B	Start - HYR (S) – PIG (S) – HYR (P) – Finish	14
7C	Start - HYR (S) – EP (P) – HYR (P) – Finish	8.4



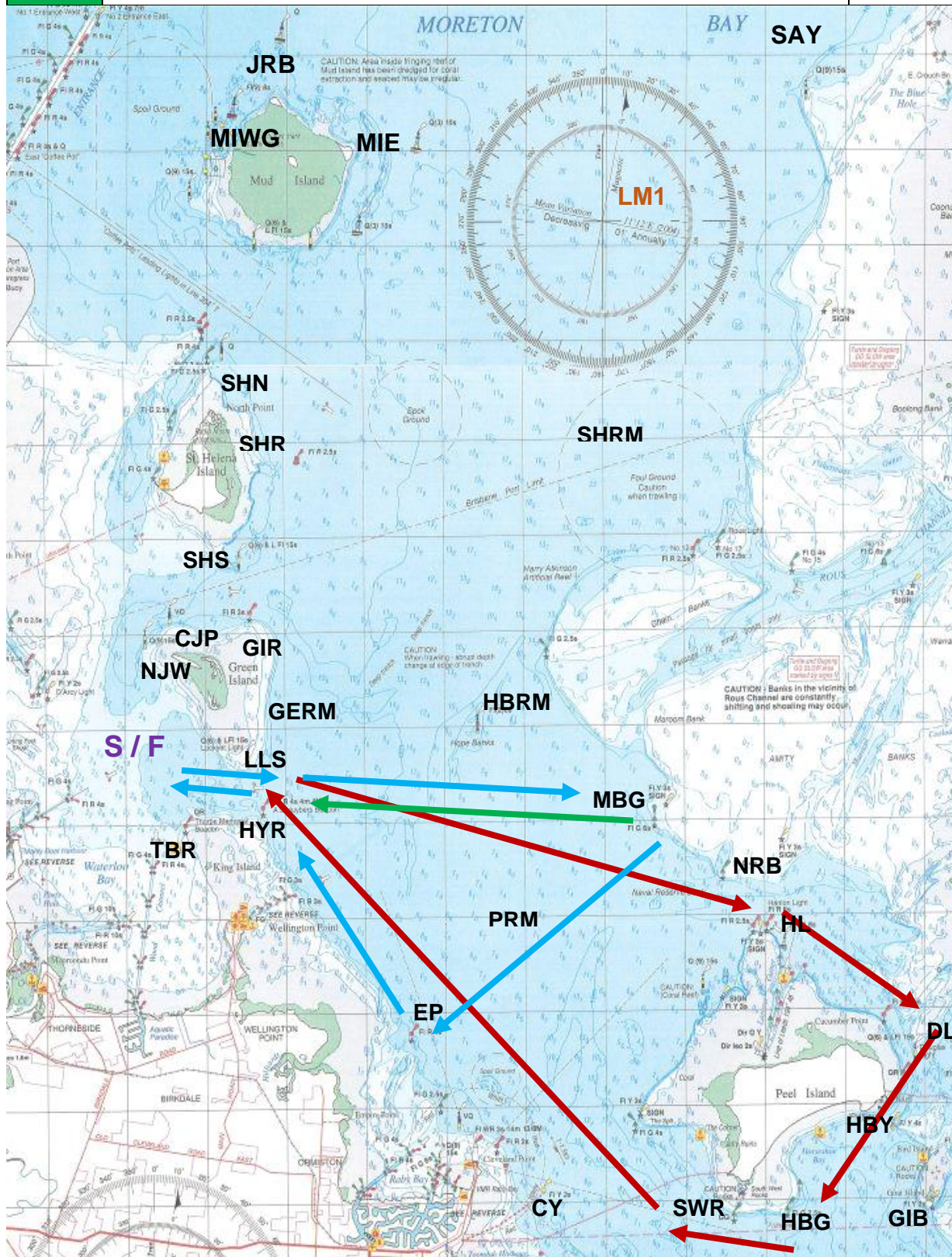
THE RQYS YACHT RACING COURSE BOOK

11A	Start - NJW (S) – CJP (S) – GIR (S) – HBRM (S) – HL (S) – HBY (P) – HBG (S) – SWR (S) – HYR (P) – Finish	23.5
11B	Start - NJW (S) – CJP (S) – GIR (S) – HBRM (S) – MBG (S) – PRM (S) – HYR (P) – Finish	13.9
11C	Start - NJW (S) – CJP (S) – GIR (S) – HBRM (S) – MBG (S) – LLS (S) – Finish	12.1



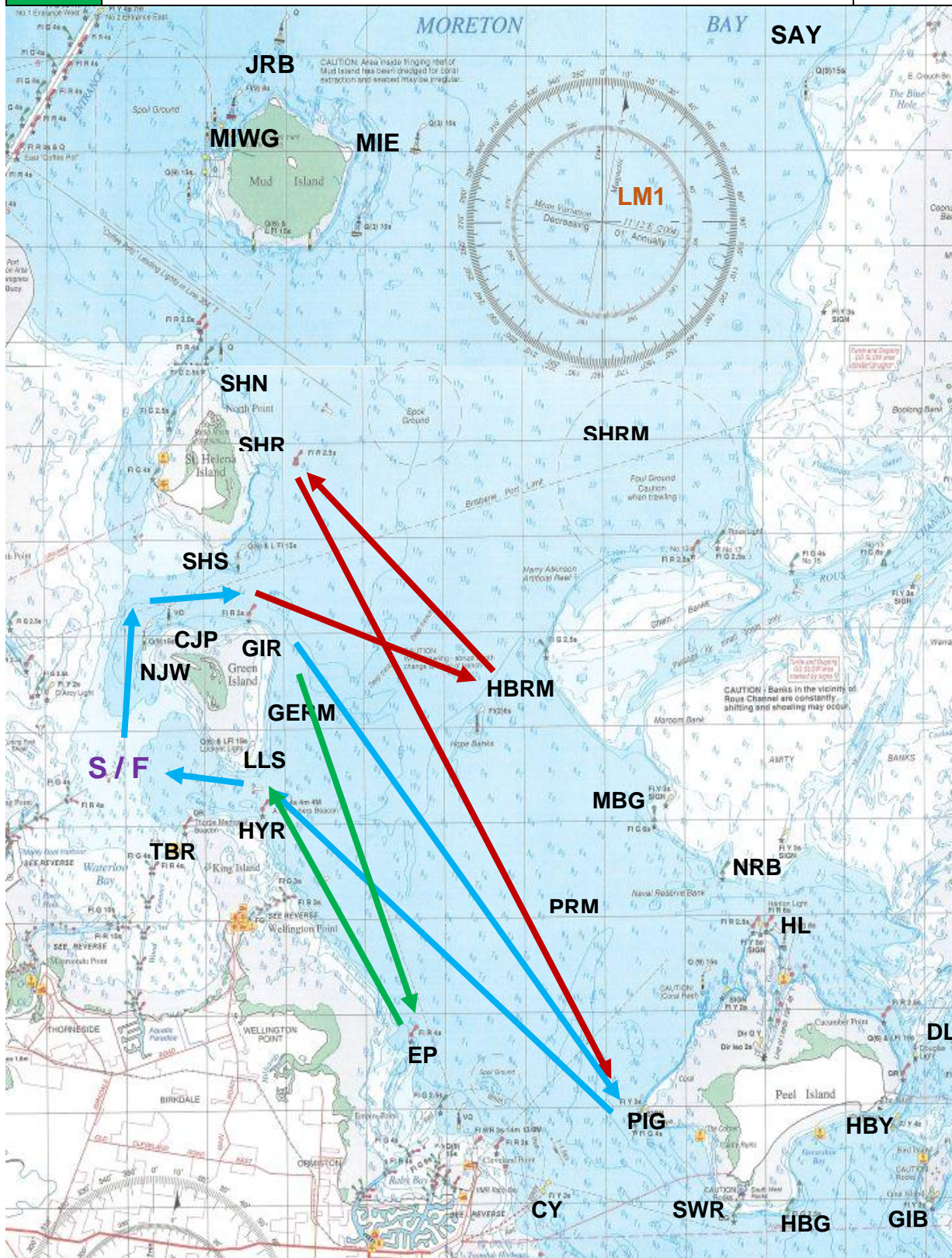
THE RQYS YACHT RACING COURSE BOOK

12A	Start - HYR (S) – HL (S) – HBY (P) – HBG (S) – SWR (S) – HYR (P) – Finish	20.5
12B	Start - HYR (S) – MBG (S) – EP (S) – HYR (P) – Finish	13.1
12C	Start - HYR (S) – MBG (S) – HYR (P) – Finish	11.2



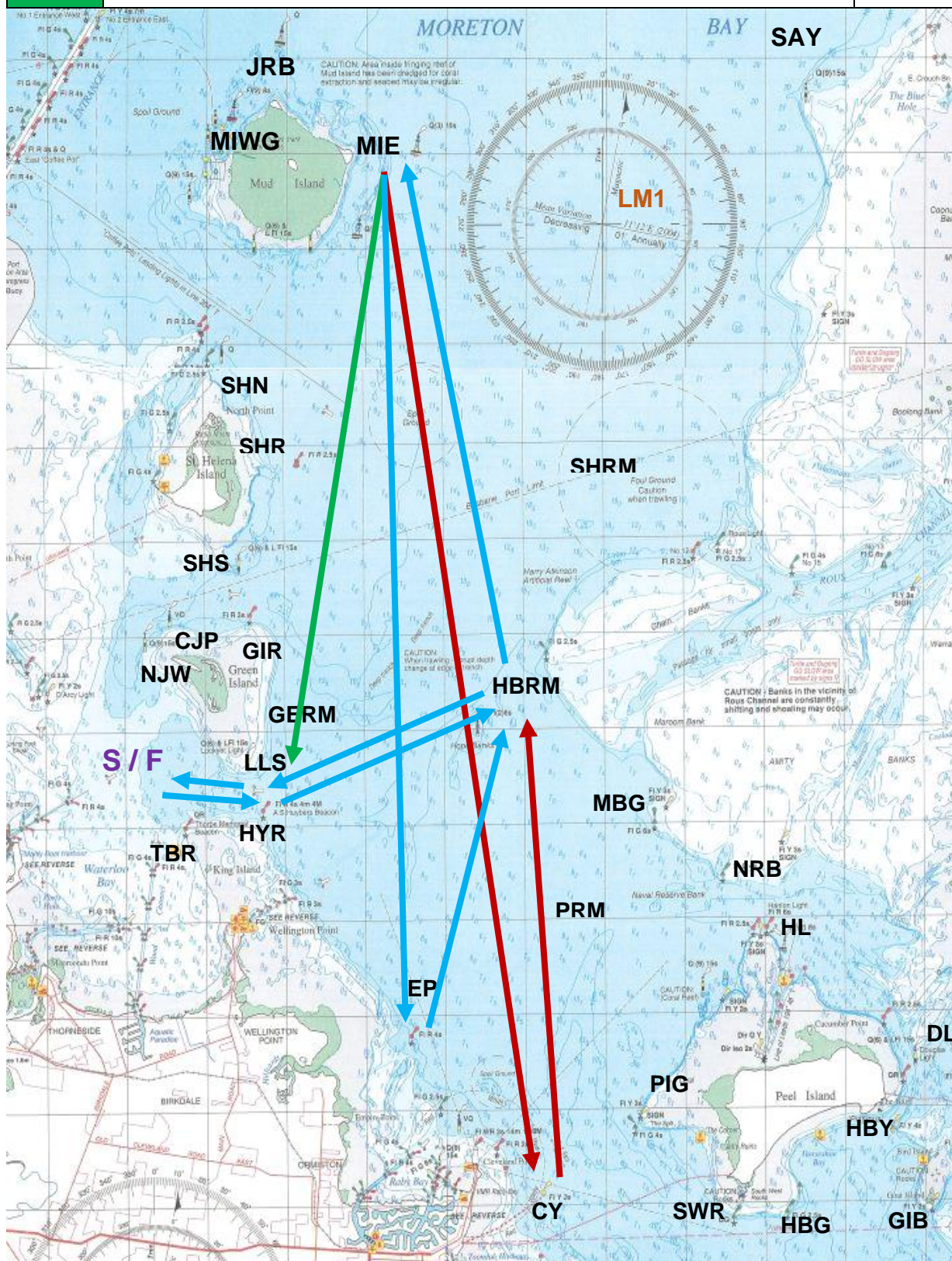
THE RQYS YACHT RACING COURSE BOOK

13A	Start – NJW (S) – CJP (S) – GIR (S) – HBRM (P) – SHR (P) – PIG (S)* – HYR (P) – Finish *When course 13 is reversed, the PIG rounding shall remain as a STARBOARD rounding.	23.5
13B	Start – NJW (S) – CJP (S) – GIR (S) – PIG (S)* – HYR (P) – Finish *When course 13 is reversed, the PIG rounding shall remain as a STARBOARD rounding.	16.2
13C	Start – NJW (S) – CJP (S) – GIR (S) – GERM (S) – EP (S) – HYR (P) – Finish	12.1



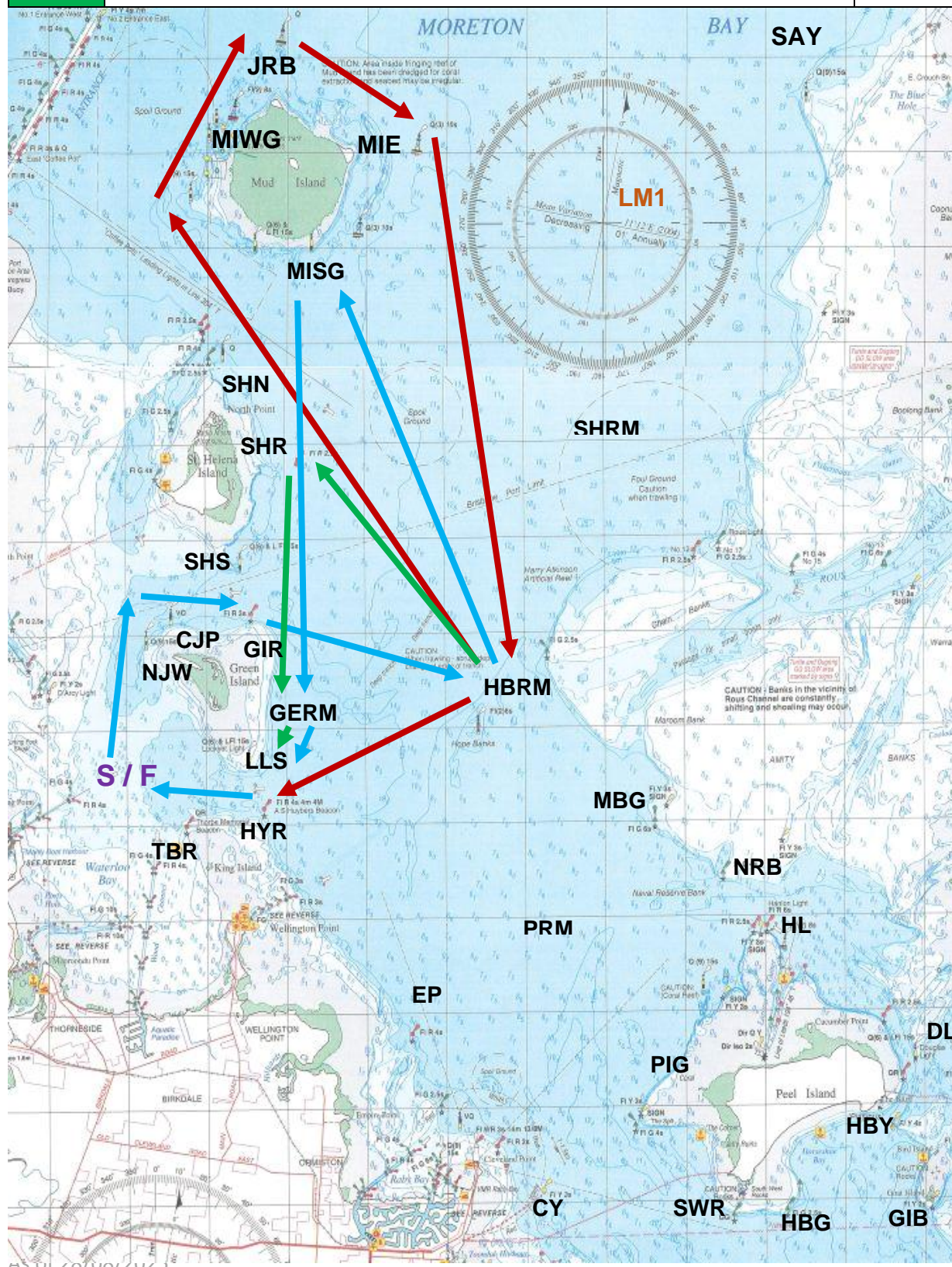
THE RQYS YACHT RACING COURSE BOOK

14A	Start - LLS (P) – HBRM (P) – MIE (P) – CY (P) – HBRM (P) – LLS (S) – Finish	37.3
14B	Start - LLS (P) – HBRM (P) – MIE (P) – EP (P) – HBRM (P) – LLS (S) – Finish	27.1
14C	Start - LLS (P) – HBRM (P) – MIE (P) – GERM (S) – LLS (S) – Finish	15.2



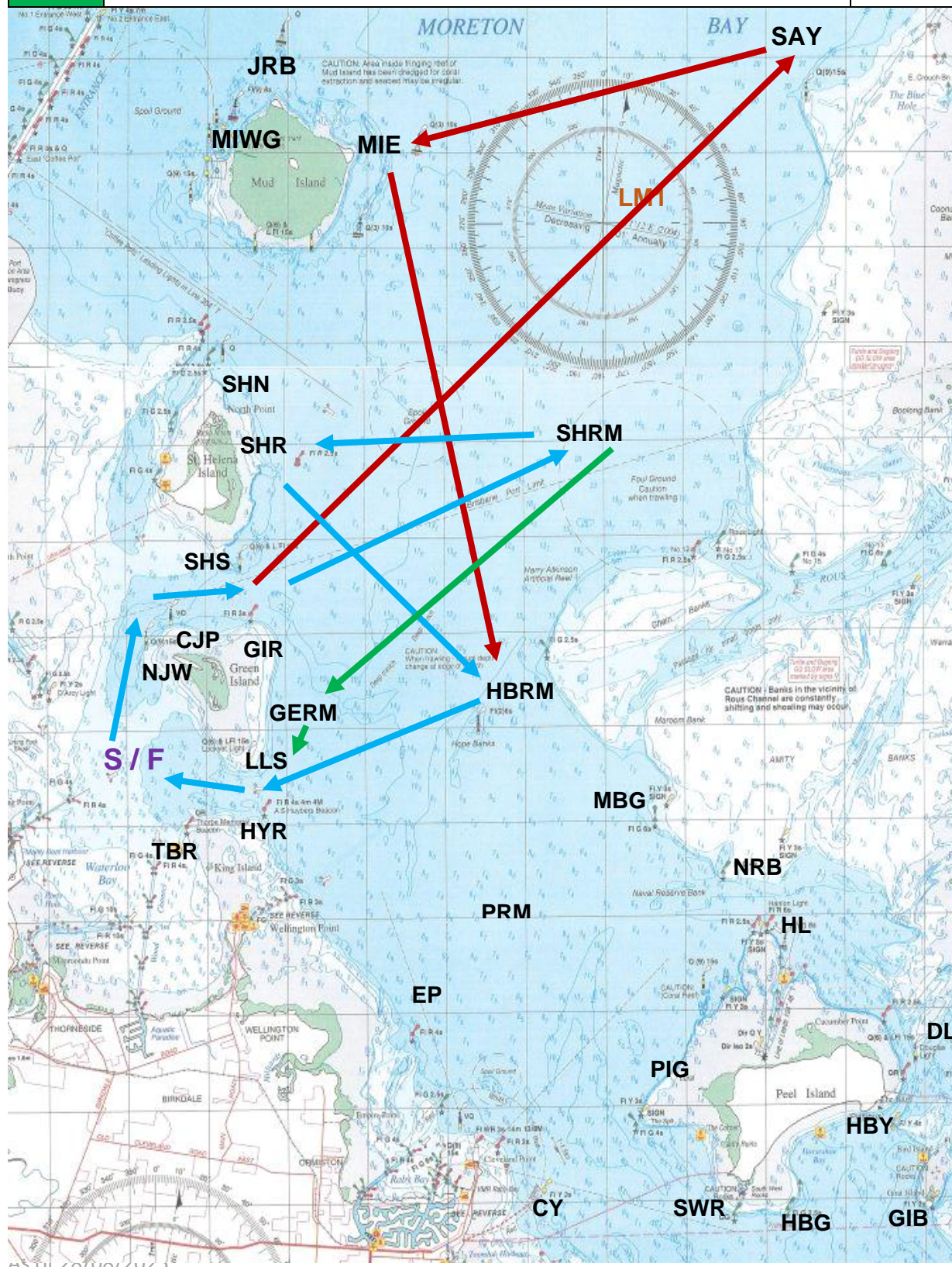
THE RQYS YACHT RACING COURSE BOOK

15A	Start – NJW (S) – CJP (S) – GIR (S) – HBRM (P) – MIWG (S) – JRB (S) – MIE (S) – HBRM (S) – LLS (S) — Finish	21.5
15B	Start – NJW (S) – CJP (S) – GIR (S) – HBRM (P) – MISG (P) – GERM (S) – LLS (S) — Finish	17
15C	Start – NJW (S) – CJP (S) – GIR (S) – HBRM (P) – SHR (P) – GERM (S) – LLS (S) — Finish	13.6



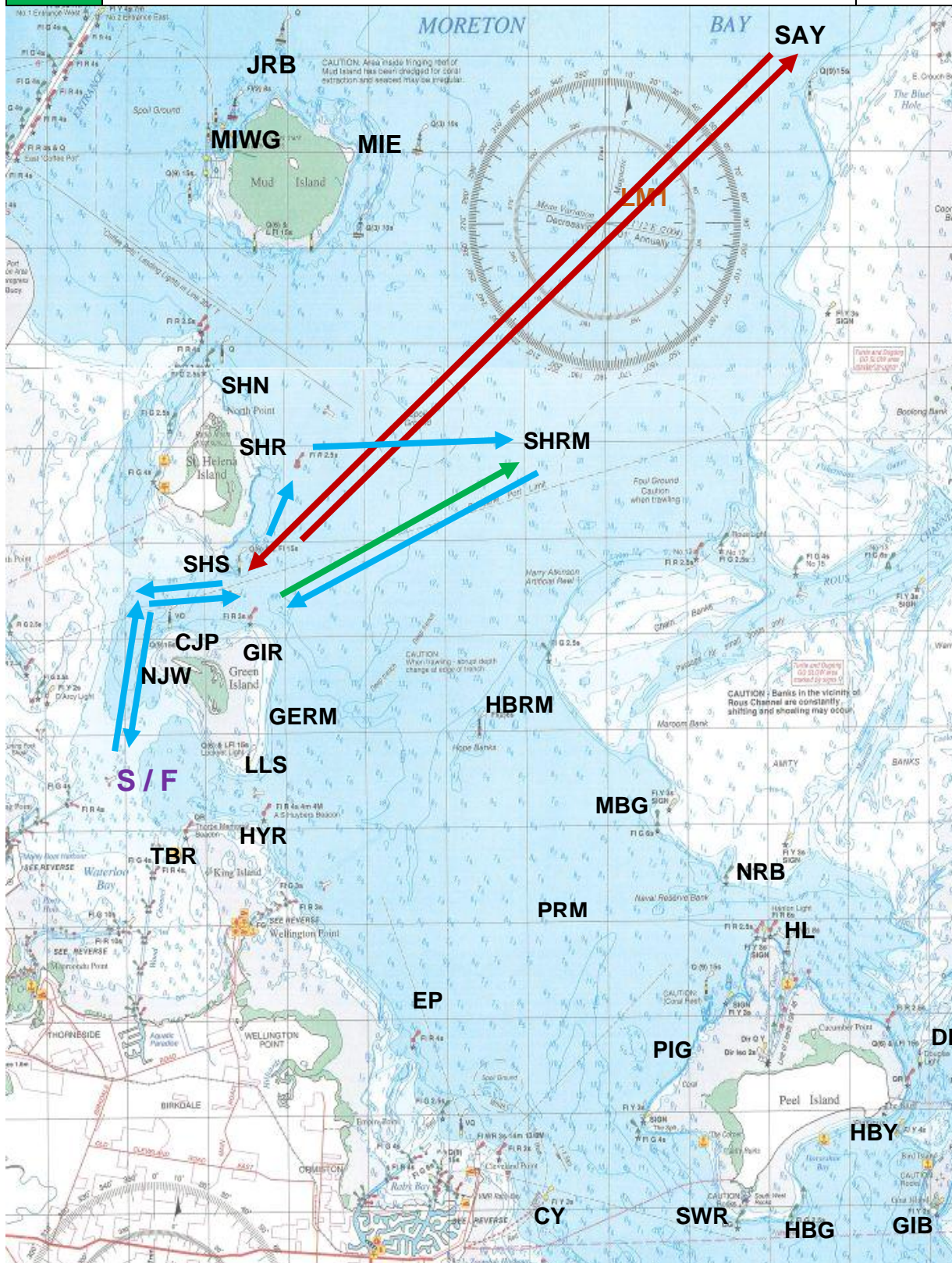
THE RQYS YACHT RACING COURSE BOOK

16A	Start - NJW (S) – CJP (S) – SHS (P) – SAY (P) – MIE (P) – HBRM (S) – LLS (S) – Finish	30
16B	Start – NJW (S) – CJP (S) – SHS (P) – SHRM (P) – SHR (P) – HBRM (S) – LLS (S) – Finish	16.2
16C	Start – NJW (S) – CJP (S) – SHS (P) – SHRM (S) – GERM (P) – LLS (S) - Finish	



THE RQYS YACHT RACING COURSE BOOK

17A	Start - NJW (S) – CJP (S) – SHS (P) – SAY (P) – SHS (S) – CJP (P) – NJW (P) – Finish	27.6
17B	Start – NJW (S) – CJP (S) – SHS (P) – SHR (S) – SHRM (S) – SHS (S) – CJP (P) – NJW (P) – Finish	
17C	Start – NJW (S) – CJP (S) – SHS (P) – SHRM (S) – SHS (S) – CJP (P) – NJW (P) – Finish	13.3

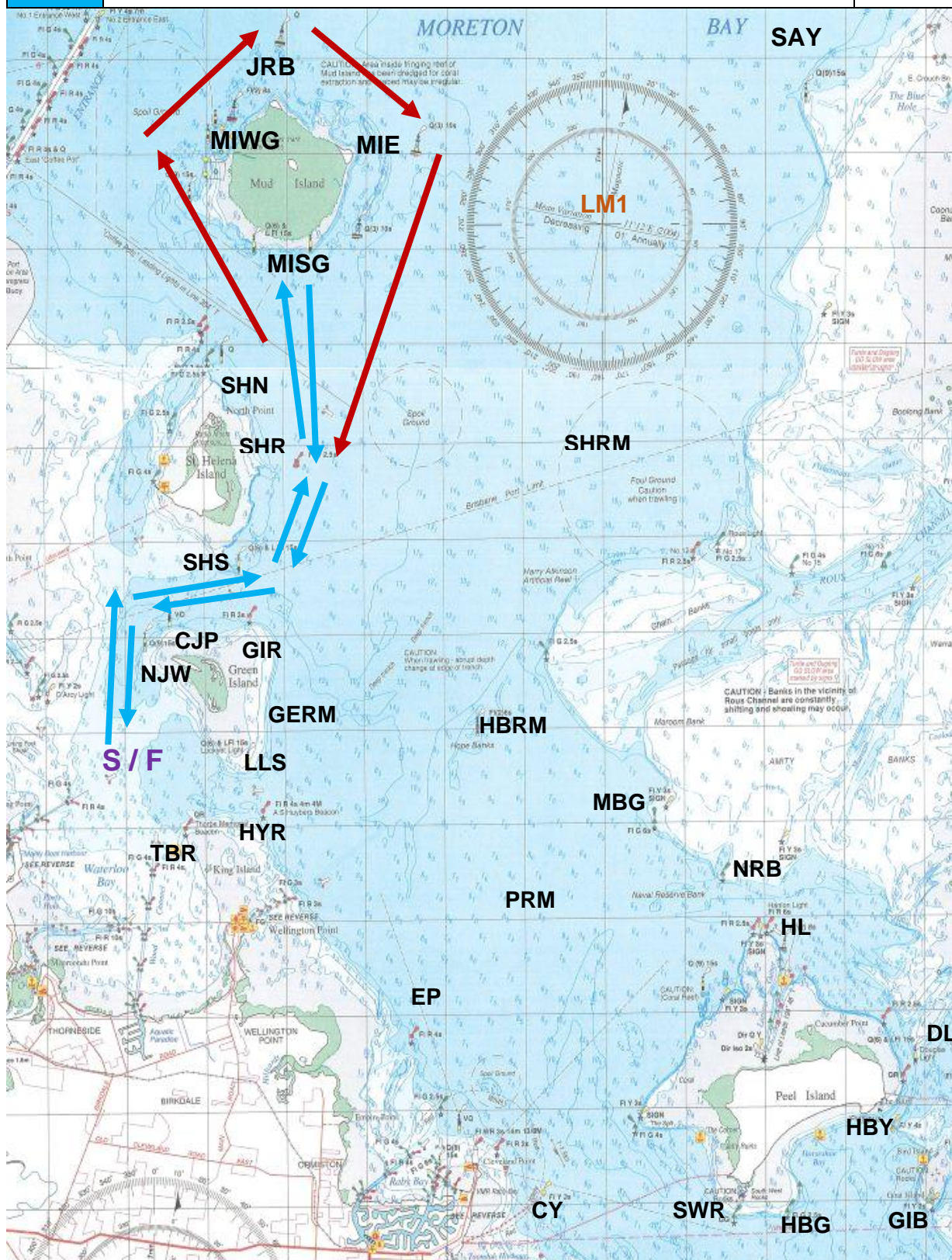


18A	Start – NJW (S) – CJP (S) – SHS (P) – SHR (S) – GERM (S) – LLS (S) – Finish	
18B	Start – NJW (S) – CJP (S) – GIR (S) – HBRM (S) – LLS (S) – Finish	9.7
18C	Start – NJW (S) – CJP (S) – GIR (S) – GERM (S) – LLS (S) – Finish	6.1



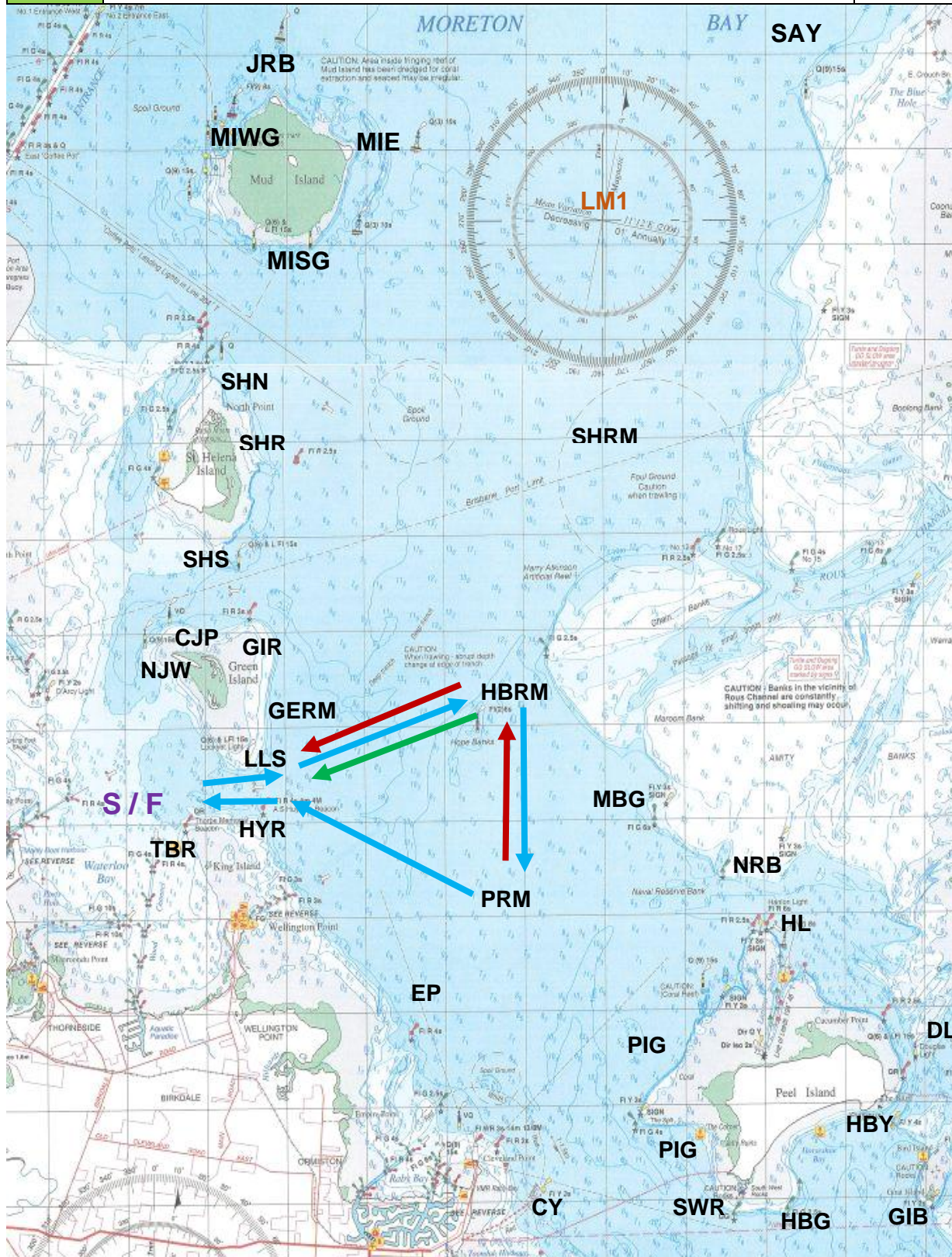
THE RQYS YACHT RACING COURSE BOOK

19A	Start – NJW (S) – CJP (S) – SHS (P) – SHR (P) – MIWG (S) – JRB (S) – MIE (S) – SHR (S) – SHS (S) – CJP (P) – NJW (P) – Finish	18.3
19B	Start – NJW (S) – CJP (S) – SHS (P) – SHR (P) – MISG (S) – SHR (S) – SHS (S) – CJP (P) – NJW (P) – Finish	12.2



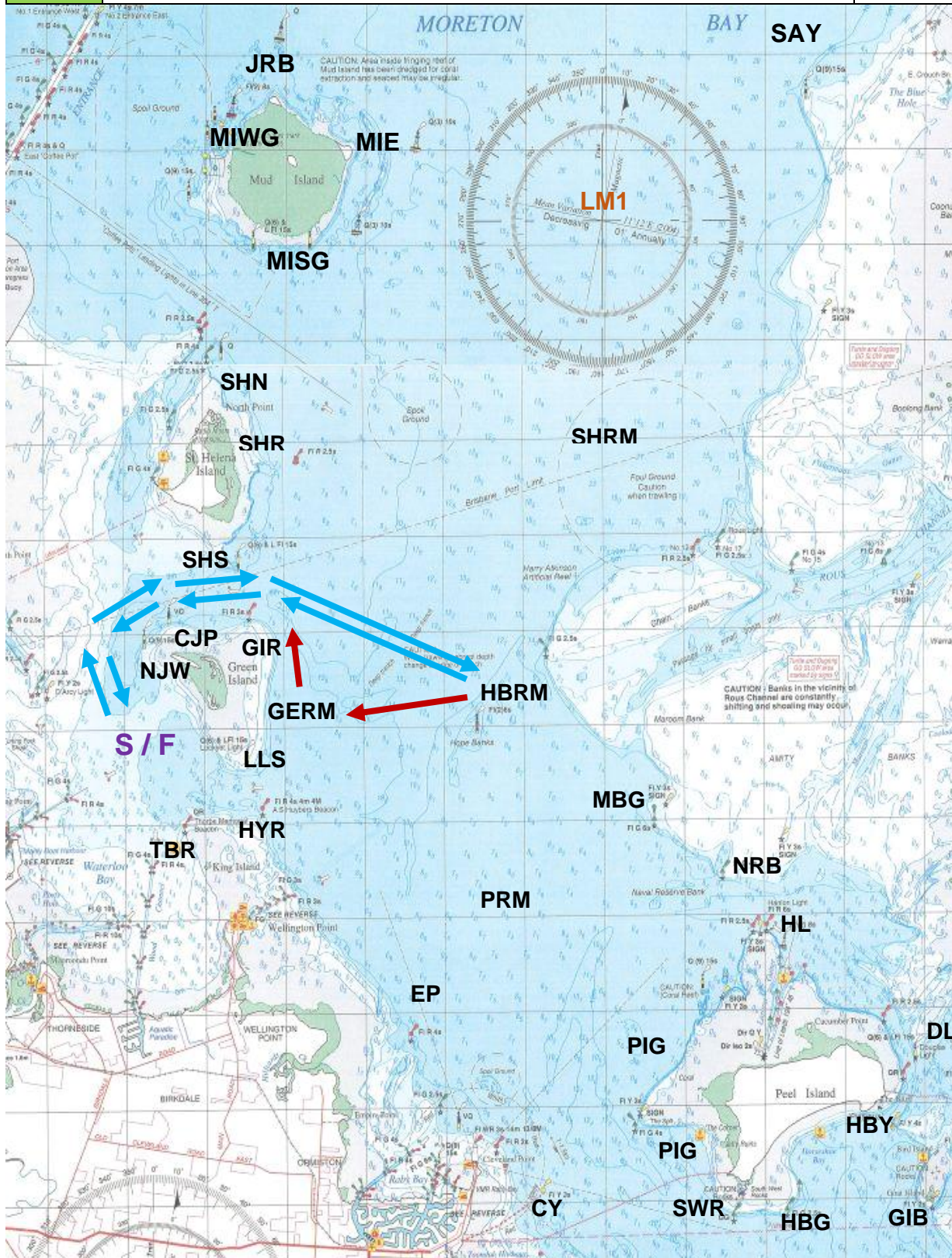
THE RQYS YACHT RACING COURSE BOOK

20A	Start – LLS (P) – HBRM (S) – PRM (S) – HBRM (P) – LLS (S) – Finish	12.4
20B	Start – LLS (P) – HBRM (S) – PRM (S) – HYR (P) – Finish	10.6
20C	Start – LLS (P) – HBRM (S) – LLS (S) – Finish	8



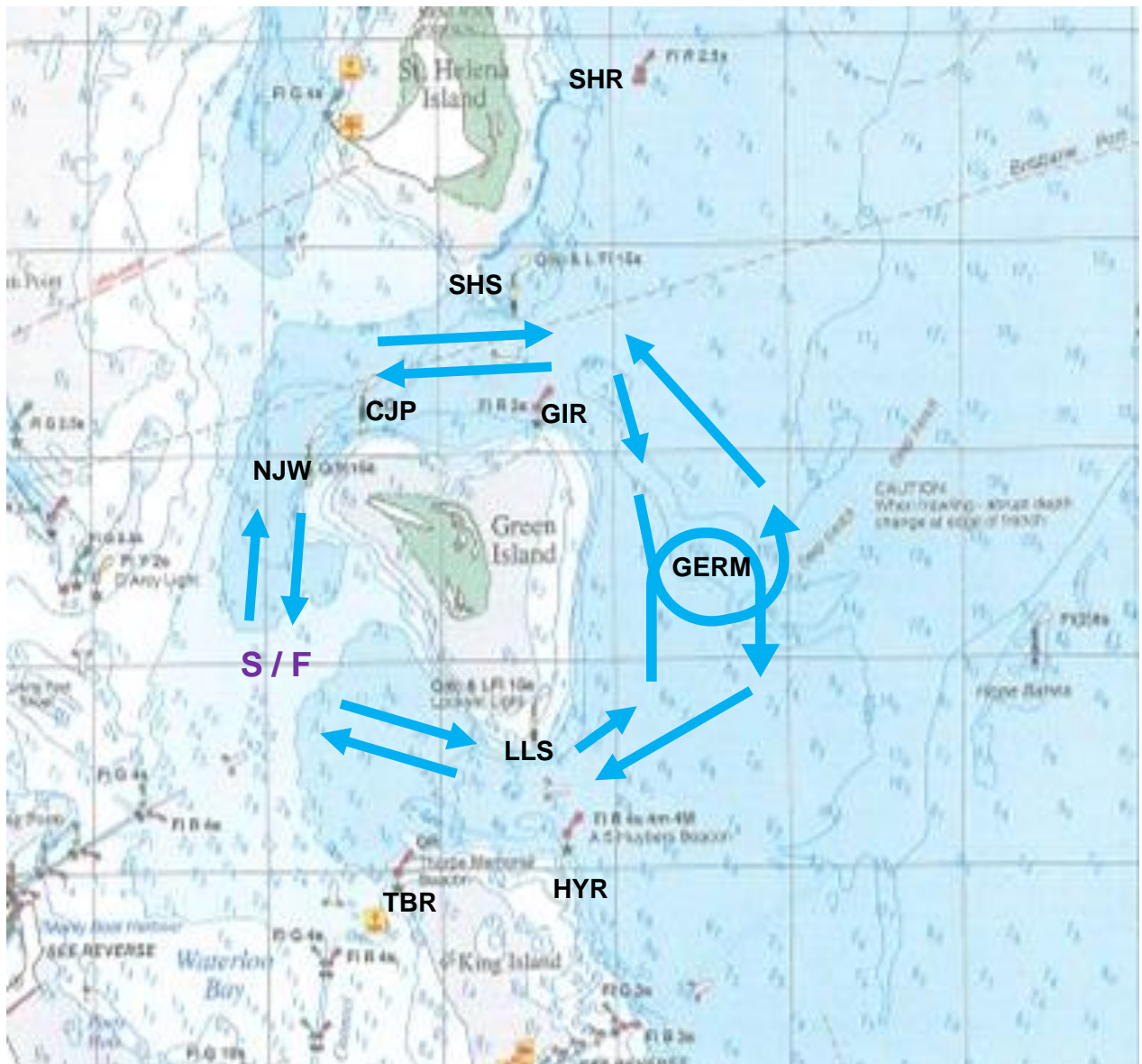
THE RQYS YACHT RACING COURSE BOOK

21A	Start – NJW (S) – CJP (S) – GIR (S) – HBRM (S) – GERM (S) – GIR (P) – CJP (P) – NJW (P) – Finish	
21B	Start – NJW (S) – CJP (S) – GIR (S) – HBRM (S) – GIR (P) – CJP (P) – NJW (P) – Finish	
21C		



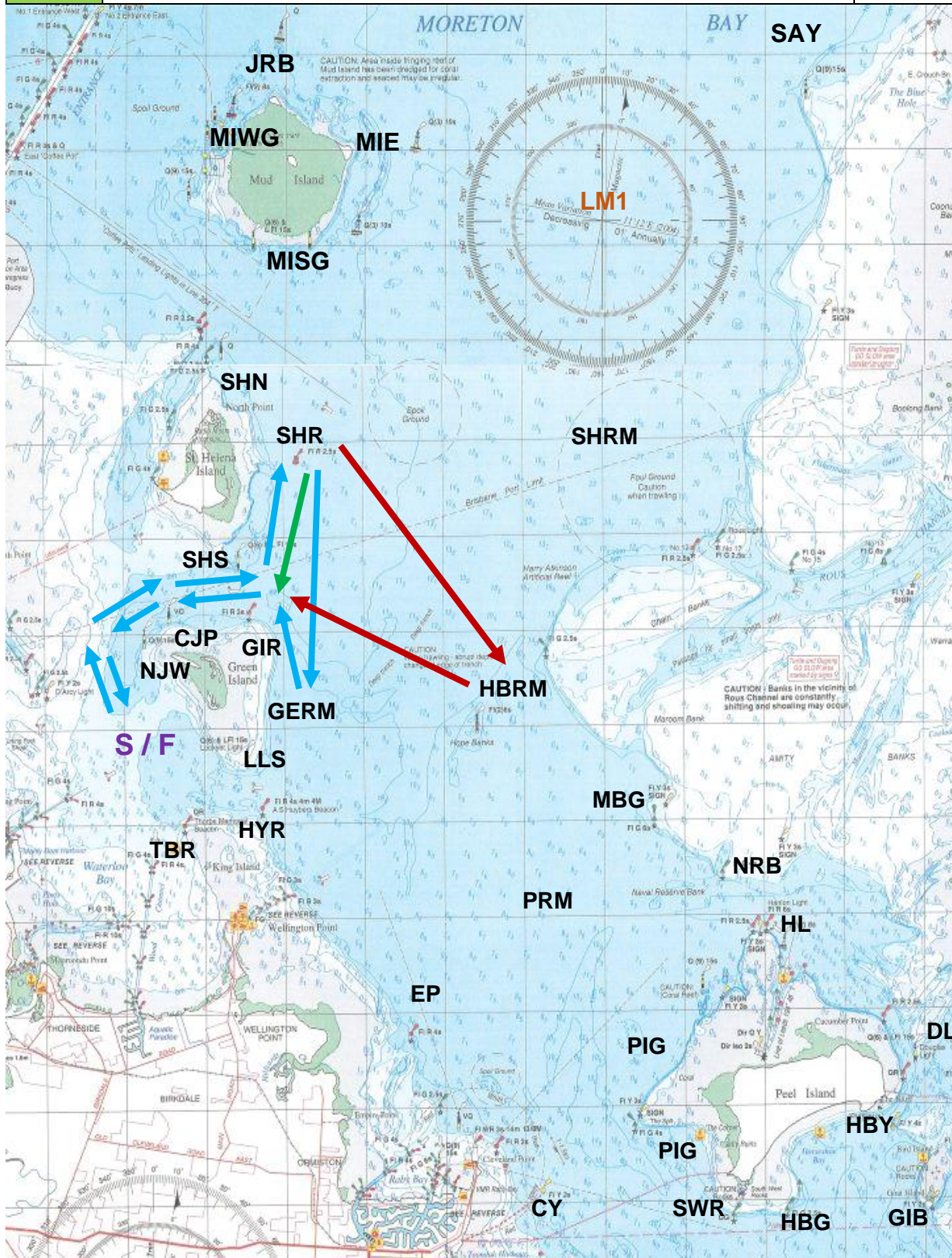
THE RQYS YACHT RACING COURSE BOOK

22A	Start – NJW (S) – CJP (S) – GIR (S) – GERM (P) – GIR (P) – CJP (P) – NJW (P) – LLS (P) – GERM (S) – LLS (S) – Finish	
22B	Start – LLS (P) – GERM (S) – LLS (S) – NJW (S) – CJP (S) – GIR (S) – GERM (P) – GIR (P) – CJP (P) – NJW (P) – Finish	
22C		



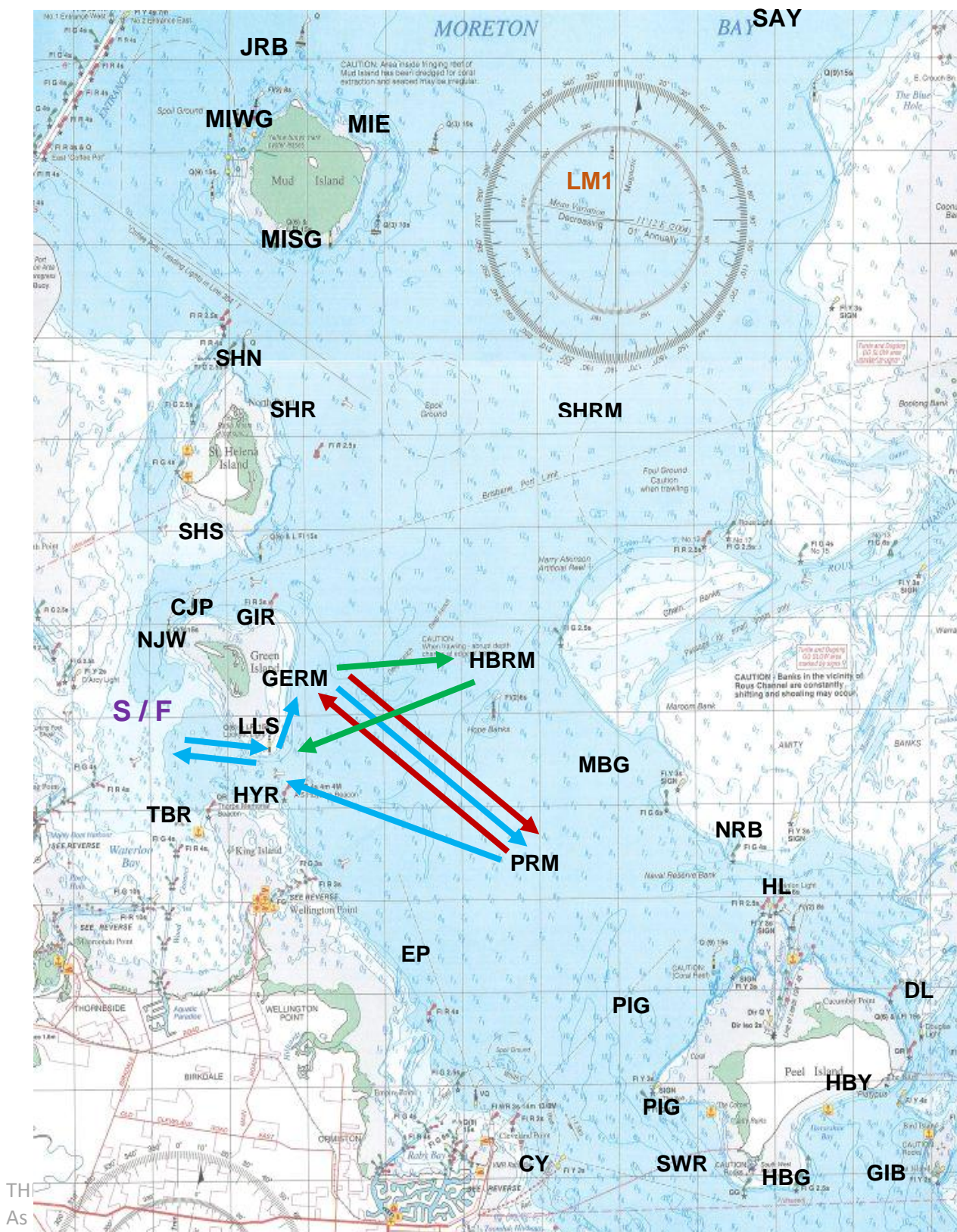
THE RQYS YACHT RACING COURSE BOOK

23A	Start – NJW (S) – CJP (S) – SHS (P) – SHR (S) – HBRM (S) – GIR (P) – CJP (P) – NJW (P) – Finish	
23B	Start – NJW (S) – CJP (S) – SHS (P) – SHR (S) – GERM (S) – GIR (P) – CJP (P) – NJW (P) – Finish	
23C	Start – NJW (S) – CJP (S) – SHS (P) – SHR (S) – SHS (S) – CJP (P) – NJW (P) – Finish	



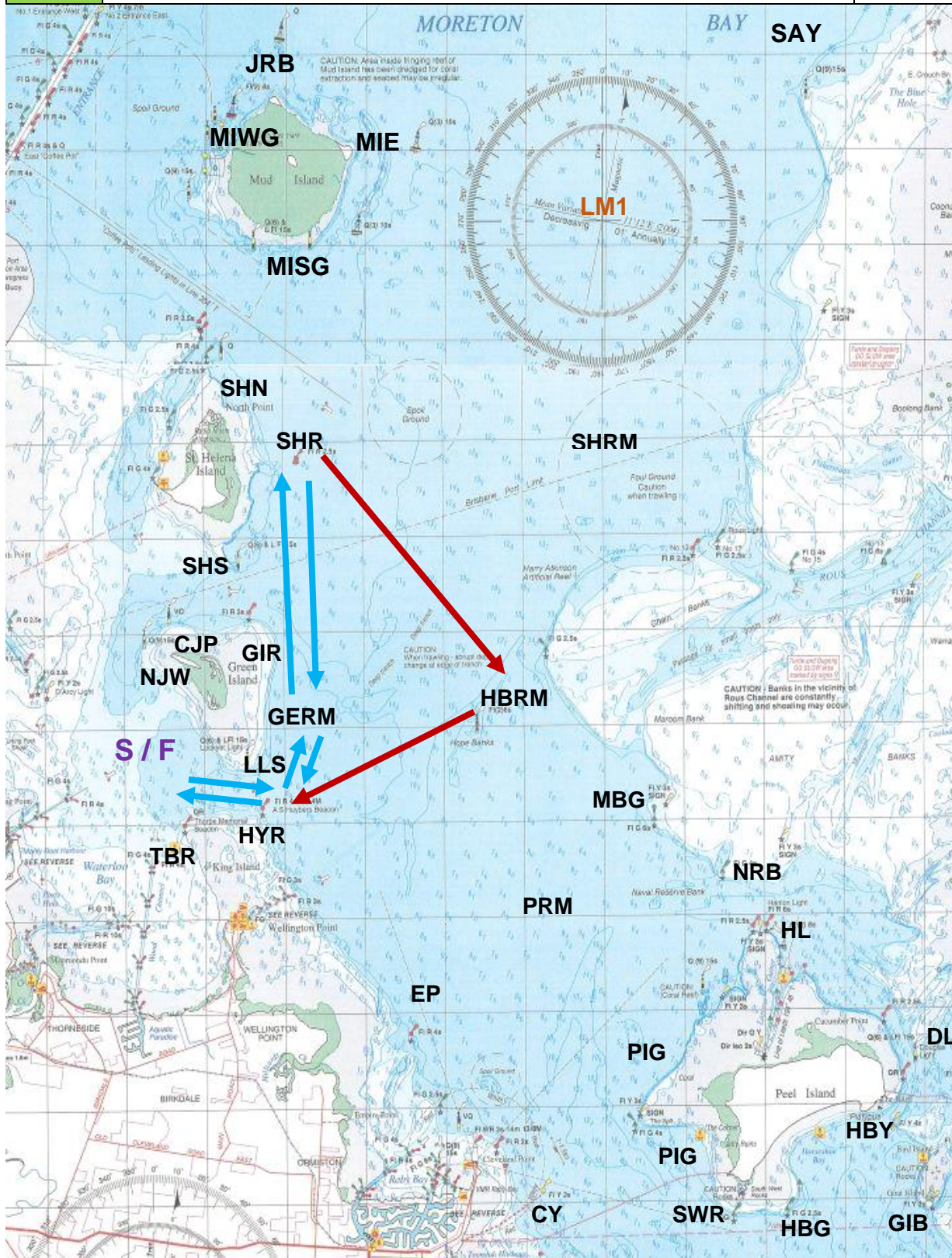
THE RQYS YACHT RACING COURSE BOOK

24A	Start – LLS (P) – GERM (S) – PRM (S) – GERM (S) – PRM (S) – HYR (P) – Finish	
24B	Start – LLS (P) – GERM (S) – PRM (S) – HYR (P) – Finish	
24C	Start – LLS (P) – GERM (S) – HBRM (S) – LLS (S) – Finish	



THE RQYS YACHT RACING COURSE BOOK

25A	Start – LLS (P) – GERM (P) – SHR (S) – HBRM (S) – LLS (S) – Finish	
25B	Start – LLS (P) – GERM (P) – SHR (S) – GERM (S) – LLS (S) – Finish	
25C		



THE RQYS YACHT RACING COURSE BOOK

26A		
26B	Start – NJW (S) – CJP (S) – SHS (P) - SHR (S) – HBRM (S) – LLS (S) - Finish	
26C		

