



---

# 141<sup>st</sup> Sailing Season

## Foiling

14<sup>th</sup> September 2025  
Until  
08<sup>th</sup> March 2026

# NOTICE OF RACE

## (NoR)

ORGANISING AUTHORITY

**ROYAL QUEENSLAND YACHT SQUADRON LTD**  
578 Royal Esplanade, Manly, QLD 4179

*The notation '[NP]' in a rule of the sailing instructions (SIs) means that a boat may not protest another boat for breaking that rule. This changes RRS 60.1.*

*The notation '[DP]' in a rule of the sailing instructions (SI's) means that a protest committee can award a penalty less than disqualification (including no penalty) at their discretion. This changes Rules 60.5 and 64.*

## **1. RULES**

- 1.1 The event is governed by the rules as defined in The Racing Rules of Sailing (RRS).
- 1.2 RRS Appendix B will apply to all windsurfing classes.
- 1.3 The Australian Sailing prescriptions and special regulations of Australian Sailing (AS) Part 2 will apply.
- 1.4 Class Rules shall apply.
- 1.5 RRS Appendix A5.3 will apply.
- 1.6 The Race Committee may signal that competitors shall sail on a specific tack during the 10 seconds before and 10 seconds after the starting signal is made, by displaying a green flag for starboard tack before or with the warning signal.
- 1.7 RRS Appendix T – Arbitration will apply.

## **2. CODE OF CONDUCT**

- 2.1 [DP] Competitors and support persons shall comply with reasonable requests from race officials.
- 2.2 Competitors must follow RQYS Club Policies (<https://www.rqys.com.au/membership/rules-and-regulations/> )

## **3. CHANGES TO RACE DOCUMENTS & SCHEDULE**

- 3.1 Any change to the race documents will be posted before 0900 on the day it will take effect, except that any change to the schedule of races will be posted by 2000 on the day before it will take effect.

## **4. SUPPLEMENTAL SAILING INSTRUCTIONS**

- 4.1 The Supplemental Sailing Instructions will be available after 1400 hrs on 12 September 2025 at <https://www.rqys.com.au/141st-season-club-foiling>

## **5. COMMUNICATION**

- 5.1 The official notice board (ONB) is located at <https://www.rqys.com.au/141st-season-club-foiling>
- 5.2 Secondary to the Official noticeboard "instant messaging" system WhatsApp may be used to notify skippers of timely information, confirmation of days course, Protest Time limit etc. Join the group at <https://chat.whatsapp.com/J1HG5eAYCA8AGgWt0JuPct>
- 5.3 The race office is located at The RQYS Sailing Office located adjacent to the Main Rigging
- 5.4 [DP] While racing, except in an emergency, a boat shall not make voice or data transmissions and shall not receive voice or data communication that is not available to all boats.

## 6. ELIGIBILITY AND ENTRY

6.1 Divisions are defined as follows:

Class	Sub-series
IQ Foil	<ul style="list-style-type: none"><li>• Open</li><li>• Under 19</li></ul>
Open Foil	<ul style="list-style-type: none"><li>• Open</li><li>• Under 19</li></ul>
Wing Foil	<ul style="list-style-type: none"><li>• Open</li><li>• Under 19</li></ul>

6.2 Seasons entrants will be entered in the Seasons Points series.

6.2 (a) Three or more entries are required to constitute a class.

6.2 (b) Classes with less than 3 entries will be entered into a mixed class fleet.

6.3 Boats may enter the event by registering online at  
<https://app.sailsys.com.au/club/25/entry/series/4892/pricing>

6.4 Casual Entries can be lodged in advance online at the above link or can be lodged on the day of racing before the first warning signal of the day, by seeing the Sailing Office staff adjacent to the Main Rigging Lawn.

6.5 Casual entrants are required to be a member of Australian Sailing by having a club membership with a yacht or sailing club, or by obtaining an [RQYS Sail Pass](#).

6.6 To be considered an entry in the event, a boat shall complete all registration requirements and pay all fees.

6.7 Late entries may be accepted at the discretion of the Organising Authority.

## 7. FEES

7.1 RQYS Member Season Entry Fees:

7.1 (a) All Divisions \$150.00

7.2 Casual Entry Fees:

7.2 (a) RQYS Members \$30.00

7.2 (b) Non-Members \$45.00

7.3 Any Refunds will be as per the RQYS Sailing Refunds Policies  
(<https://www.rqys.com.au/membership/rules-and-regulations/>).

## 8. ADVERTISING

8.1 Boats may be required to display advertising chosen and supplied by the organizing authority.

## 9. INDICATIVE SCHEDULE

9.1 The Supplemental Sailing Instructions schedule shall take precedence.

9.2 Racing will be conducted on Sundays as per the [Sailing Program](#).

9.3 Seasons Points races will be every race of the Season.

9.4 There will be a competitors' briefing on racing days at the Windsurfing Centre 1 hour before the first possible Warning Signal.

9.5 The First Warning Signal shall not be before 1330 hours.

## 10. EQUIPMENT INSPECTION

10.1 Boards/Boats may be inspected at any time.

## 11. VENUE

11.1 NoR Attachment A shows the location of the racing areas.

11.1 (a) The Course Area will be confirmed at the daily briefing.

11.2 NoR Attachment C shows the plan of the event venue.

## 12. COURSES

- 12.1 The courses to be sailed shall be as described in the Supplemental Sailing Instructions.

## 13. SCORING

- 13.1 There shall be one scoring method, Season Points Series Scratch.
- 13.2 1 race is required to constitute a series.
- 13.3 There will be 1 scoring discard per 5 completed races.
- 13.4 Average Points:
- 13.4 (a) Average points may be requested for season entries when racing is missed due to competing at a National or International class regatta or a World Sailing ranked event in the competitor's class, or in any other circumstance approved by the Sailing Committee.
- 13.4 (b) These points shall be awarded for no more than four (4) days in a season.
- 13.4 (c) To receive average points, sailors must request average points in advance by emailing [sailing@rqys.com.au](mailto:sailing@rqys.com.au) and have this approved by the Sailing Office BEFORE the missed day's racing.
- 13.4 (d) Average Points will be awarded as per RRS A9 (a).
- 13.5 A boat which Does Not Compete (DNC) in a race shall be scored the number competitors within the fleet at the starting area, plus an additional three (3) points. This changes RRS A5.3.

## 14. DATA PROTECTION

- 14.1 By participating in an event, a competitor automatically grants to the Organising Authority and the sponsors of the event, the right in perpetuity, to make, use and show, from time to time and at their discretion, any motion pictures, still pictures and live, taped or film television and other reproductions of him/her during the period of the competition for said event in which the competitor participated and in all material related to the said event without compensation.

## 15. RISK STATEMENT

- 15.1 RRS 3 states: 'The responsibility for a boat's decision to participate in a race or to continue to race is hers alone.' By participating in this event each competitor agrees and acknowledges that sailing is a potentially dangerous activity with inherent risks. These risks include strong winds and rough seas, sudden changes in weather, failure of equipment, boat handling errors, poor seamanship by other boats, loss of balance on an unstable platform and fatigue resulting in increased risk of injury. **Inherent in the sport of sailing is the risk of permanent, catastrophic injury or death by drowning, trauma, hypothermia or other causes.**
- 15.2 All participants are required to comply with any safety provisions as mandated under the Racing Rules of Sailing, the Australian Sailing Special Regulations Part 2 for Off The Beach Boats, and any Class Rules that may apply. The Squadron encourages and supports competitors who believe it is appropriate to exceed the above requirements (such as the wearing of helmets, body armour, impact vests, etc.) if they or their guardian believe that conditions and their personal circumstances warrant. All competitor's attention is drawn to the Risk Statement - Section 15.1 of the Notice of Race.

## 16. INSURANCE

- 16.1 Each participating boat shall be insured with valid third-party liability insurance with a minimum cover of \$10,000,000AUD per incident or the equivalent.

## **17. PRIZES**

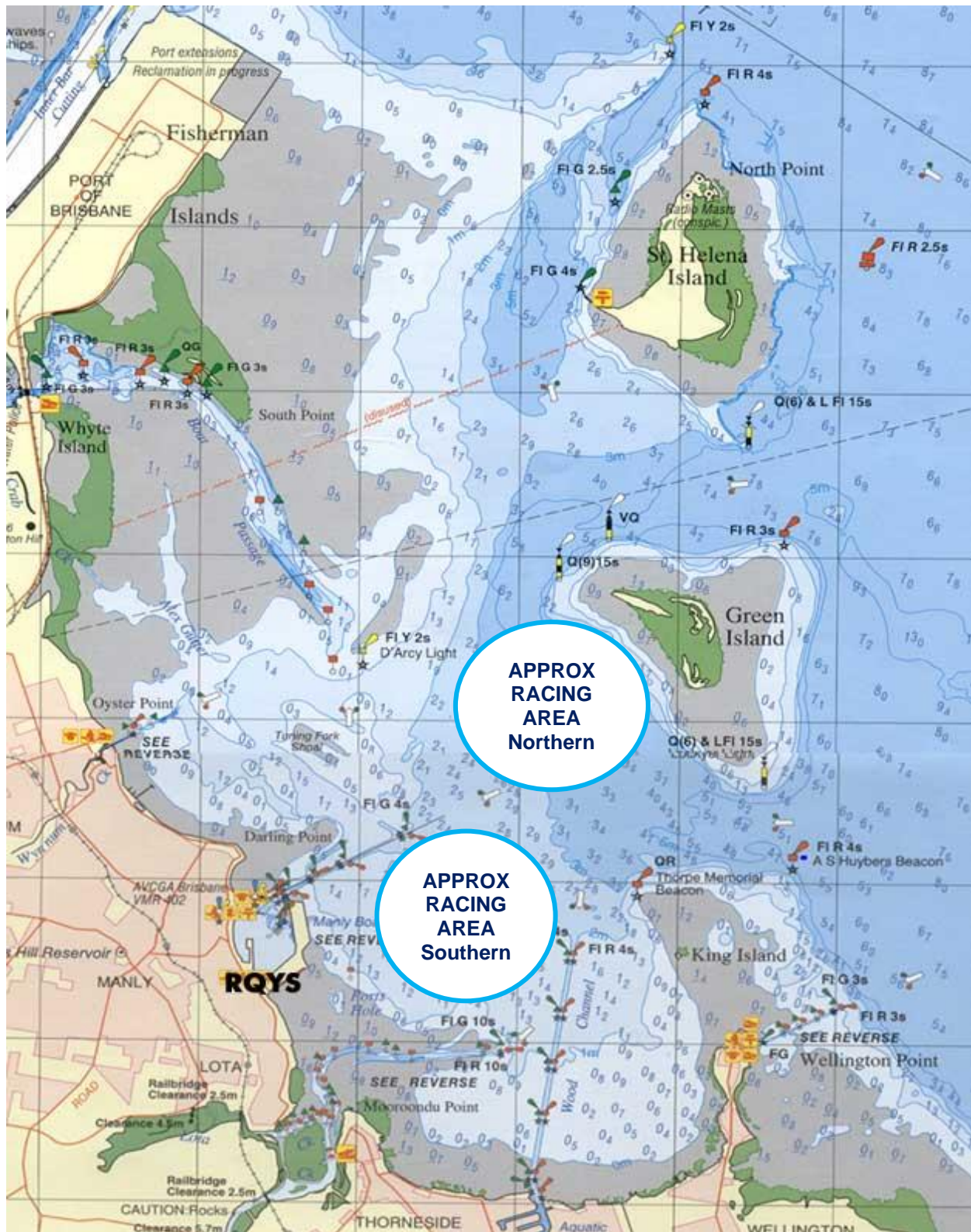
- 17.1 The 2025/2026 Presentations of Trophies for Seasons Points and other events will take place in a Squadron Function Room, to be advised by invitation in future. A list of major trophies is listed in NoR Attachment B.
- 17.2 Only Season Entrants are eligible for Seasons Points awards at the Junior and/or Senior Presentation of Trophies.
- 17.3 Divisions with five or more entries will be awarded:
  - 17.3 (a) 1<sup>st</sup>, 2<sup>nd</sup> & 3<sup>rd</sup> Season Points Scratch
- 17.4 Other prizes may be awarded at the discretion of the Organising Authority.

## **18. FURTHER INFORMATION**

- 18.1 For further information please contact:  
RQYS Sailing: 07 3396 8666 / [sailing@rqys.com.au](mailto:sailing@rqys.com.au)  
578 Royal Esplanade MANLY QLD 4179 AUS  
[www.rqys.com.au](http://www.rqys.com.au)



## Attachment A – Approximate Racing Area



# Attachment B

## **Most Consistent Skipper in a Junior Class**

~ Harold Dean Memorial Trophy ~

## **Best Result at a National Regatta**

~ Vidgen Perpetual Trophy ~

## **Most Improved Junior Skipper**

~ T E Passey Trophy ~

## **Junior Sailor of the Year**

~ Lady Stonehaven Challenge Cup ~

## **Youth Sailor of the Year**

~ W A O'Hare Memorial Trophy ~

## **Squadron Champion for an Olympic Class**

~ Astra Trophy ~

## **Longest Serving Member of a Season Points Winner**

~ The Governor's Trophy ~

## **Most Consistent Skipper in a Senior Class**

~ Callisto Cup – AM Greenfield Trophy ~

## **Most Consistent Contributor**

~ Maurice Tilley Perpetual Trophy ~

## **Corinthian Yachtsman of the Year**

~ Model Elliott ~

## **Best Performing Female Crew**

~ Erica Blumson Trophy ~

## **Best Performance in an Olympic Class**

~ John H Robinson Memorial Trophy ~

## **Leading Forward Hand**

~ Past Commodore Greg Clarke Trophy ~

## **Keelboat Crew of the Year**

~ E Sparkes Trophy ~

## **Sailor of the Year**

~ Hardy Brothers Jewellers Trophy ~

# Attachment C – Location Information

## EMERGENCY CONTACTS

Emergencies	000	
RQYS Sailing Manager	0424 101 732	
Royal Queensland Yacht Squadron	(07) 3396 8666	578 Royal Esplanade, Manly QLD
Manly Coast Guard	(07) 3396 5911	40 Trafalgar St, Manly QLD
Wynnum Police	(07) 3308 8100	82 Pine St, Wynnum QLD
Wynnum Fire & Rescue	(07) 3396 3297	2006 Wynnum Rd, Wynnum West
Brisbane Water Police	(07) 3895 0333	2 Howard Smith Dr, Port of Brisbane

### Location, access & communication of Next of Kin Details

Sailing Office & SailSys Databases including information gathered from regatta registrations and/or indemnity forms.

### Location of Nearest Emergency Medical Facilities

Redlands Hospital	(07) 3488 3111	21 Weippin St, Cleveland QLD
-------------------	----------------	------------------------------

### Location of Nearest Medical Facilities

Wynnum Family Health Service	(07) 3893 0093	116 Edith St, Wynnum QLD
Doctors on Manly Road	(07) 3348 6111	12 Manly Rd, Manly QLD
Silky Oaks Medical Practice	(07) 3396 9855	218 Manly Rd, Manly QLD
Dental On Cambridge	(07) 3348 6661	4/99 Cambridge Parade, Manly QLD



## LOCAL SERVICES

### Sail Maker

#### North Sails

1/264 Tingal Rd, Wynnum QLD  
3396 5822

#### Hood Sails

181 Wynnum Esplanade, Wynnum QLD  
0419 799 958

#### Ullman Sails

112 Glenora St, Wynnum QLD  
(07) 3348 7245

### Chandlery

#### Muir Marine

453 Esplanade, Manly QLD  
(07) 3396 9988

#### Road Tech Marine

20 Redland Bay Rd, Capalaba QLD  
(07) 3914 9543

### Boat Building / Repairs – Located at RQYS

#### JSA Marine

(07) 3348 5682

#### David Glenn Boat Building

0412 878 144

### Physio

#### Manly Physiotherapy & Pilates

3/443 Esplanade, Manly QLD  
(07) 3396 8137

#### Bounce Physio Birkdale

190 Birkdale Rd, Birkdale QLD  
(07) 3822 2122

### Pharmacy

#### Manly Village Pharmacy

9/222 Stratton Terrace, Manly QLD  
(07) 3396 8999

### Groceries

#### IGA Manly Village

Cnr Stratton Tce & Cambridge Parade  
(07) 3396 1980

#### Woolworths Wynnum Central

145 Florence St, Wynnum QLD  
(07) 3513 4416

### Butcher

#### The Local Butcher

222 Stratton Terrace, Manly QLD  
(07) 3396 2195

### Bakery

#### Manly Bakery

222 Stratton Terrace, Manly QLD  
(07) 3396 5688

### Accommodation

#### [Manly Marine Cover Motel](#)

Located on the Grounds of RQYS  
(07) 3348 1000

#### Limited Camping Facilities at RQYS

[Limited camping MAY be available](#)  
(07) 3396 8666

#### [The Manly Hotel](#)

54 Cambridge Parade, Manly QLD  
(07) 3249 5999

#### [Waterloo Bay Hotel](#)

75 Berrima St, Wynnum QLD  
(07) 3893 2344

#### [Pelican's Nestle Inn](#)

149 Wynnum Esplanade, Wynnum QLD  
(07) 3396 3214

#### [Wynnum Anchor Motel](#)

14 Adam St, Wynnum QLD  
(07) 3396 3037

## LOCAL WEATHER TIDE

Local Weather:

The RQYS Weather Station can be found at:

<https://www.rqys.com.au/weather-station/>

The Weather Station records from above the club Bay Lookout.

BOM: Radar: <http://www.bom.gov.au/products/IDR663.loop.shtml>

Marine Forecast:

<http://www.bom.gov.au/qld/forecasts/moreton-bay.shtml>

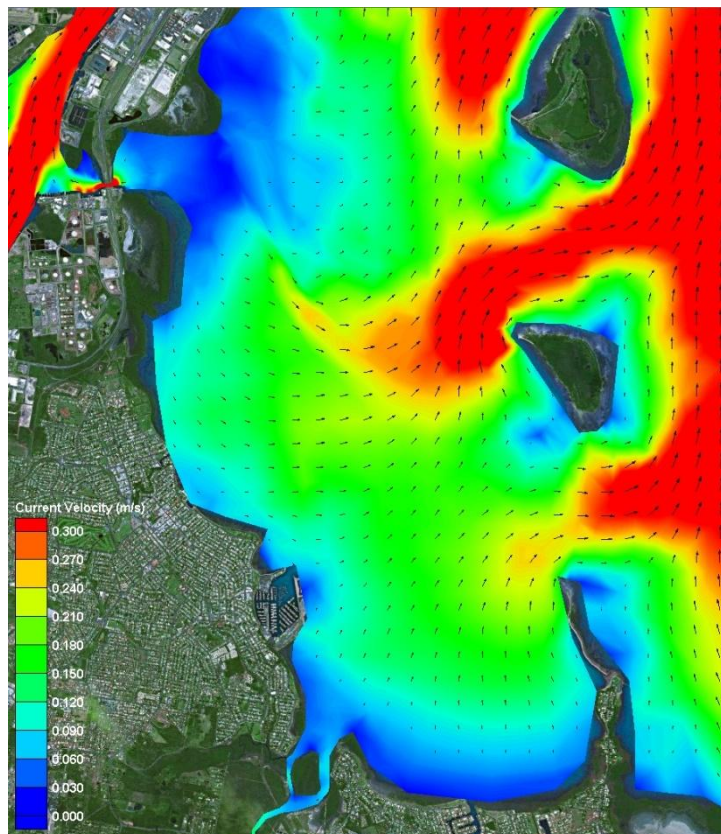
Other Popular forecasts:

Predict Wind: <https://forecast.predictwind.com/table/>

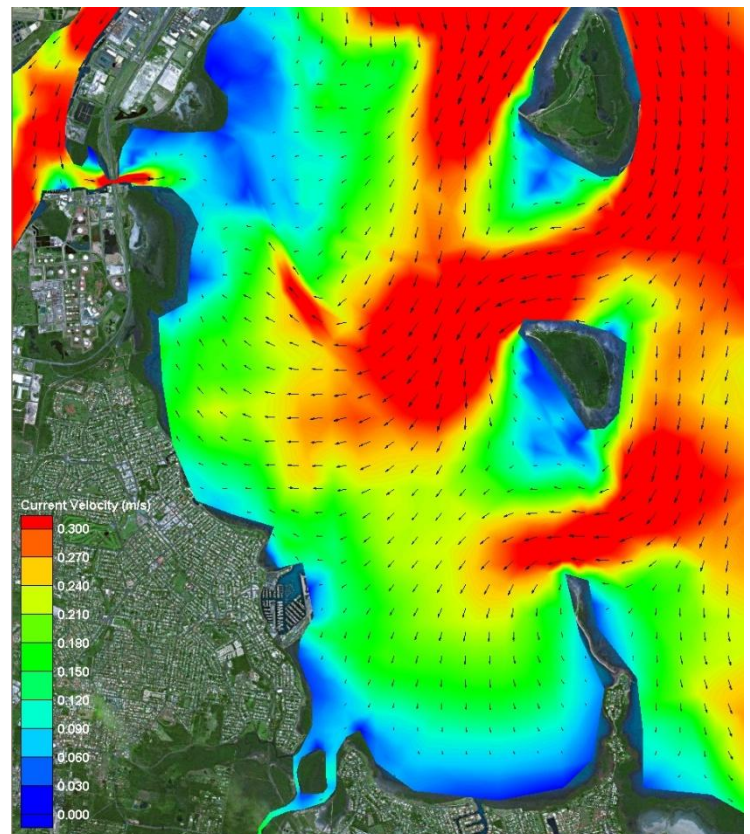
Seabreeze: <https://www.seabreeze.com.au/weather/wind-forecast/brisbane>

WillyWeather: <https://wind.willyweather.com.au/qld/brisbane/brisbane.html>

**Waterloo Bay Ebb**



**Waterloo Bay Flood**





LOCALITY		MAP GRID
578 Royal Esplanade access		A6
Eastern Beach (windsurfing)		P7-P8
Davenport Drive dog off-lead area		N10-P7
Inspiration Point lookout (fishing)		M10
Public (Harbour South) Carpark		A4
Public (South) Boatramp		B4
Public (South) Pontoon		C3

**NEARBY MANLY HARBOUR VILLAGE SERVICES**

900m / 5-15min

**CONVENIENT RQYS & BAYSIDE MANLY ACCESS**

Manly Station: 15km

Brisbane CBD: 30min

20min drive

BUILDINGS		MAP GRID
Australian Sailing (QLD)		C8
Bayview Lookout		P6
Boatyard [Former Marina] Office		H5
Cavill Building / FLAGS Room		C5
Clubhouse		C6
Manly Marina Cove Motel (MMCM)		A7 / B8
Marina Office		F5
Monument		K6
Sailing Academy		B5
Sailing Office		D6
Sheds / Storage Lockers		K6, J7- L7
Sports Amenities Block		F5
Trades / Services Sheds		H7
Volunteers' Sheds		D8, J5
Windsurfing Centre of Excellence		P6
Youth Squad Shed		F7

GROUNDS		MAP GRID
Academy (Tackers) Rigging Lawn		B5
DOSA (designated smoking) areas		A6, A7
Kids' / dinghy beach		N5
Rigging Lawn 1 (Main / Functions)		D5
Rigging Lawn 2 (Marina Office)		F6
Rigging Lawn 3 (Youth Squad)		F7
Rigging Lawn 4 (Eastern grounds)		L6, M6
Regatta camping area		M7
Regatta trailer parking area		L6
Slipway 2 (Longer-term storage)		J7-L7
Windsurfing - rigging / hosedown		N7, P6

FACILITIES		MAP GRID
Dock - Bill Kirby (VIP: booking only)		D4
Dock - Fit-out work (short-term)		H4
Dock - Fuel (Diesel & PULP)		D4-E4
Fuel - Bowser (shoreside)		D5
HAZMAT Disposals shed		H5
Ramp 1 - Academy (Tackers)		C4
Ramp 2 - Main (Launch / retrieval)		E5
Ramp 3 - Slipway (Boatyard)		G5
Ramp 4 - Dinghy (Kids' beach)		N5
RQYS Boatyard		G5/6-H5/6
RQYS Sheds / Storage Lockers		K6 / J7-L7
Slipway 2 (longer-term storage)		J7-L7
Travelift (35t) & Slewing Crane		H4/H5

AMENITIES		MAP GRID
BBQs		B4, P6
Beach (RQYS - dinghy / kids')		N5
Beach (windsurfing, dogs, etc)		N10-P7
Gym		F5
Hosedown stations (boats, trailers, vehicles)		E7, F6, K7, M5
Hosedowns (personal / gear)		N7, P6
Kids' play areas		B4, N5
Laundry facilities		H5, P6
Seating / picnic areas		D5, G7, H6, N5, P6
Showers (bathrooms)		F6, H5, P6
Showers (outdoors)		F6, N7
Toilets		C5, C6, F6, H5, H7, P6

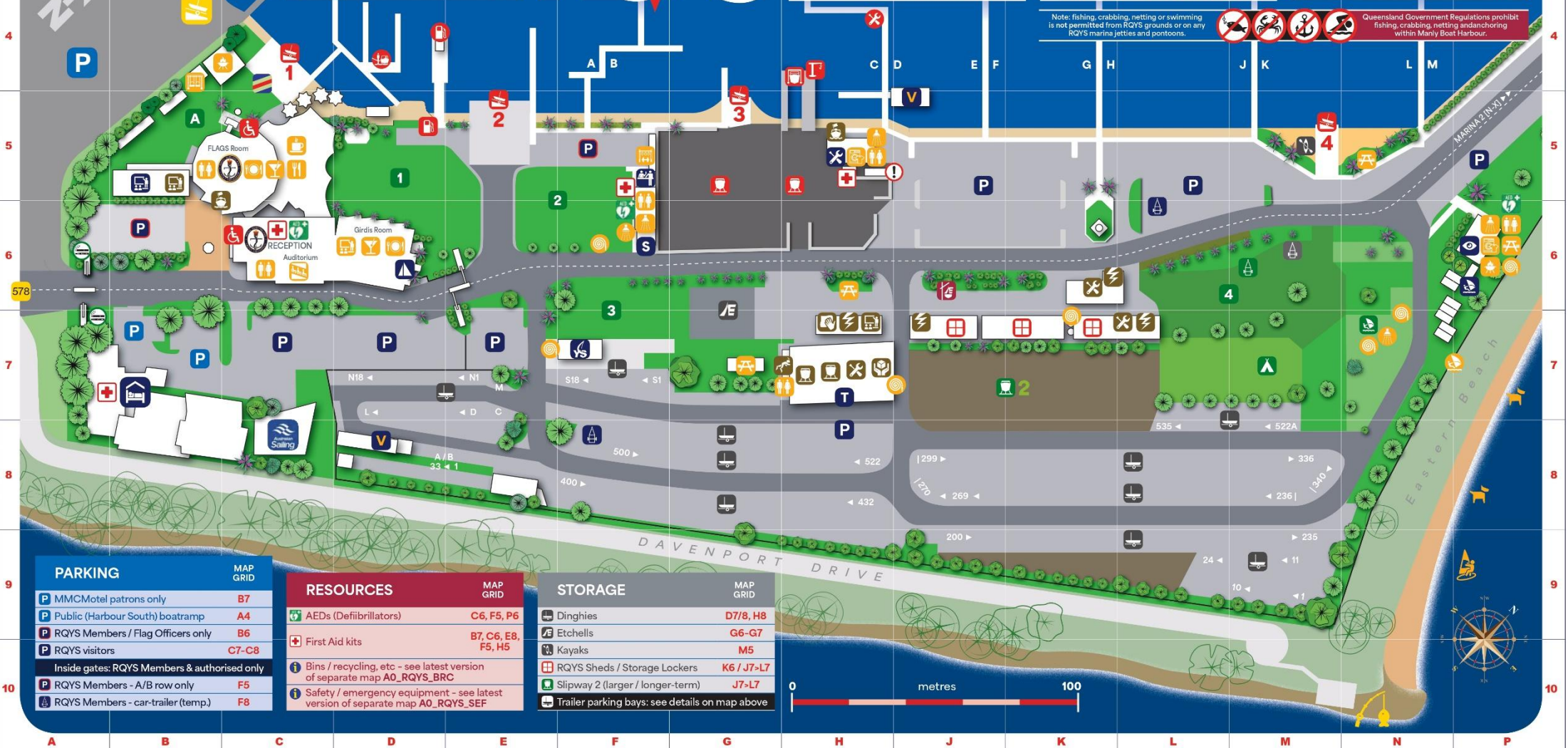
BUSINESSES		MAP GRID
Andrew Woodforth Marine		H7
Brisbane Scuba		H7
CMA Mechanical & Marine		K6
David Glenn Boat Builders		H7
Electech Industries		H7
Green Marine Electrical		K6
JSA Marine		H7
Ocean Logic		J7
Paper Sailors Rock		H7
Professional Boat Care		H7
Qld Marine Training Services		B5
Seadog Marine		H7
Signature Yacht Services		L7
SigTech Electrical		L7
World Wide Boat Brokers		B6
Yachtshare		H5

# RQYS DIRECTORY

## MAIN SQUADRON PRECINCT / MARINA 1

Note: fishing, crabbing, netting or swimming is not permitted from RQYS grounds or on any RQYS marina jetties and pontoons.

Queensland Government Regulations prohibit fishing, crabbing, netting and anchoring within Manly Boat Harbour.



PARKING		MAP GRID
MMCMotel patrons only		B7
Public (Harbour South) boatramp		A4
RQYS Members / Flag Officers only		B6
RQYS visitors		C7-C8
Inside gates: RQYS Members & authorised only		
RQYS Members - A/B row only		F5
RQYS Members - car-trailer (temp.)		F8

RESOURCES		MAP GRID
AEDs (Defibrillators)		C6, F5, P6
First Aid kits		B7, C6, E8, F5, H5
Bins / recycling, etc - see latest version of separate map A0_RQYS_BRC		
Safety / emergency equipment - see latest version of separate map A0_RQYS_SEF		

STORAGE		MAP GRID
Dinghies		D7/8, H8
Etchells		G6-G7
Kayaks		M5
RQYS Sheds / Storage Lockers		K6 / J7-L7
Slipway 2 (larger / longer-term)		J7-L7
Trailer parking bays: see details on map above		





# ROYAL QUEENSLAND YACHT SQUADRON – THE SAILING GATEWAY TO MORETON BAY



Waterloo Bay



~ Founded 1885 ~

[rqys.com.au](http://rqys.com.au)

[/RQYS.Manly](https://www.facebook.com/RQYS.Manly)

[/royal\\_qld\\_yacht\\_squadron](https://www.instagram.com/royal_qld_yacht_squadron)

