

**Queensland French Yacht Owners Association**



## **NOTICE OF RACE**

# **BENETEAU CUP, JEANNEAU CUP AND FRENCH YACHT CHALLENGE**

**25<sup>th</sup> and 26<sup>th</sup> OCTOBER 2025**

**ORGANISING AUTHORITY**

**ROYAL QUEENSLAND YACHT SQUADRON LTD**  
578 Royal Esplanade, Manly, QLD 4179

*The notation [DP] in a rule of the sailing instructions (SI's) means that a protest committee can award a penalty less than disqualification (including no penalty) at their discretion. This changes Rules 60.5 and 64.*

## **1. RULES**

- 1.1 The event is governed by the rules as defined in The Racing Rules of Sailing (RRS).
- 1.2 The Australian Sailing prescriptions and special regulations Part 1 Category 5 will apply.
- 1.3 Where there is a difference between the Notice of Race (NoR) and the Sailing Instructions (SI) the SI take precedence.

## **2. CODE OF CONDUCT**

- 2.1 [DP] Competitors and support persons shall comply with reasonable requests from race officials.
- 2.2 [DP] Competitors and support persons shall handle any equipment or place advertising provided by the organizing authority with care, seamanship, in accordance with any instructions for its use and without interfering with its functionality.
- 2.3 Competitors must follow RQYS Club Policies (<https://www.rqys.com.au/membership/rules-and-regulations/> )

## **3. CHANGES TO RACE DOCUMENTS & SCHEDULE**

- 3.1 Any change to the race documents will be posted before 0900 on the day it will take effect, except that any change to the schedule of races will be posted by 2000 on the day before it will take effect.

## **4. SAILING INSTRUCTIONS**

- 4.1 The Sailing Instructions will be available after 1600 on Wednesday 22 October 2025 at <https://www.rqys.com.au/event/bc-jc-fyc25/>.

## **5. COMMUNICATION**

- 5.1 The online official notice board is located at <https://www.rqys.com.au/event/bc-jc-fyc25/>.
- 5.2 Secondary to the Official noticeboard "instant messaging" system WhatsApp may be used to notify skippers of timely information, confirmation of days course, Protest Time limit etc. if in use a link to join the group can be found [HERE](#).
- 5.3 The race office is located at The RQYS Sailing Office located adjacent to the Main Rigging Lawn, telephone 3396 8666, email [sailing@rqys.com.au](mailto:sailing@rqys.com.au) .
- 5.4 [DP] All boats shall carry a VHF radio capable of communicating on 72 & 77.
- 5.5 All boats are required to monitor VHF Channel 72 for the duration of the race.
- 5.6 If the race committee displays code flag L alternate VHF channel 77 will be used. This changes NoR 5.5.
- 5.7 [DP] From the first warning signal until the end of the last race of the day, except in an emergency, a boat shall not make voice or data transmissions and shall not receive voice or data communication that is not available to all boats. This restriction applies also to mobile telephones.

## **6. ELIGIBILITY AND ENTRY**

- 6.1 The Beneteau Cup is open to all Beneteau yachts, the Jeanneau Cup is open to all Jeanneau yachts, and the French Yacht Challenge is open to all French designed or built monohull yachts, subject to clause 6.2. Entry in the Beneteau Cup and the Jeanneau Cup includes entry in the French Yacht Challenge.
- 6.2 All yachts shall have a minimum LOA of 9 metres.
- 6.3 Boats may enter the event by registering online at <https://www.rqys.com.au/event/bc-jc-fyc25/> by 1500 hours on Tuesday 21 October 2025. If boats experience any difficulty during the entry process they are encouraged to contact the RQYS Sailing Office.
- 6.4 Entries close at 1500 hours on Tuesday 21 October 2025.
- 6.5 Late entries will be accepted upon payment of the late entry fee.
- 6.6 Yachts withdrawing their entry prior to close of entry will have their fees refunded. After close of entry, refunds will be at the discretion of the Race Committee.
- 6.7 Nominated division may be changed up until 1700 hours on Thursday 23 October 2025. No changes will be accepted after that date.
- 6.8 A contact person and mobile number for each yacht is to be nominated.

## **7. FEES**

- 7.1 Entry fees are as follows:

<b>Event</b>	<b>Standard Entry Fee</b>	<b>Late Entry Fee (after 22 October 2025)</b>
Beneteau Cup	\$120	\$140
Jeanneau Cup	\$120	\$140
French Yacht Challenge Only	\$100	\$120

- 7.2. Entry in the Beneteau Cup and the Jeanneau Cup includes entry in the French Yacht Challenge.

## **8. ADVERTISING**

- 8.1 Boats may be required to display advertising chosen and supplied by the organizing authority.

## 9. INDICATIVE SCHEDULE

9.1 The Sailing Instructions schedule shall take precedence.

9.2

DATE	EVENT	WARNING SIGNAL
<b>Friday 24 October</b>	Pre-Regatta get together for skippers, crew and partners on RQYS Boardwalk (details TBA)	1800
<b>Saturday 25 October</b>	Sign On (by calling start boat on VHF as per NoR 5)	0930 to 0950
	"Tour de la Baie" - Race 1: <ul style="list-style-type: none"><li>• Cruising Division (Non-Spinnaker)</li><li>• Performance Division (Spinnaker)</li></ul>	1010 1025
	Complementary sausage sizzle at the BBQ area near the Bay Lookout – BYO drinks	1600
<b>Sunday 26 October</b>	Breakfast (at competitors' own expense) and judging of Best Dressed French Themed Crew	0830
	Sign On (by calling the start boat on VHF as per NoR 5)	0930 to 1020
	"Autour des iles" - Race 2: <ul style="list-style-type: none"><li>• Cruising Division</li><li>• Performance Division</li></ul>	1040 1055
	Complementary finger food. Drinks at competitors' expense. Trophy Presentation at RQYS	1600 1630

9.3 The results presentation may be held earlier than indicated in the schedule. Any changes to the schedule will be advised via the Official Notice Board & WhatsApp.

9.4 The sequence below of "Tour de la baie" for Race 1 and "Autour des iles" for Race 2 may be swapped depending on the forecast for breeze.

9.5 "Tour de la baie" or Tour of the Bay is a longer passage racecourse, e.g. once around Peel Island.

9.6 "Autour des iles" or Around the Islands - two laps of a shorter course, e.g. around Green Island

9.7 On both days if conditions allow a second race may be scheduled at the discretion of the Race Officer.

9.8 The Beneteau Cup, the Jeanneau Cup and the French Yacht Challenge will each include a minimum of one race on each day of the regatta.

## 10. DIVISIONS & MEASUREMENT

10.1 There will be no measurement for this regatta.

10.2 Yachts can nominate to sail in one of two divisions:

10.2.1 **Cruising** Division (furling sails only no spinnakers)

Furling sails include Code 0, Gennaker, Reacher

10.2.2 **Performance** Division (with spinnakers)

10.3 Each entrant in the Queensland Beneteau Cup will be competing in a team consisting of three yachts. Where the number of yachts in the fleet is not a multiple of three, the last team will then consist of the remaining one or two boats. The Interclub Challenge for the Queensland Beneteau Cup is won by the team with the lowest total point score.

10.3.1 If a team is not nominated teams shall be seeded randomly.

10.4 No changes to divisions will be accepted after 1700 hours on Thursday 23 October 2025.

## 11. VENUE

- 11.1 NoR Attachment A shows the location of the racing areas.
- 11.2 NoR Attachment B shows the plan of the event venue.

## 12. COURSES

- 12.1 The courses shall be described in the 2024/25 Course Booklet Version 3 as provided by the RQYS Sailing Office, published online at <https://www.rqys.com.au/documents-auditing/>.

## 13. PENALTY SYSTEM

- 13.1 Rule 44.1 is changed so that the Two-Turns Penalty is replaced by the One-Turn Penalty.

## 14. HANDICAPS & SCORING

- 14.1 PHS Handicaps shall be as approved by the RQYS handicappers.
- 14.2 Review of Handicap forms can be found at <https://www.rqys.com.au/documents-auditing/> and must be submitted before the first day of racing.
- 14.3 Scoring and handicapping will be defined by the "SailSys" system. SailSys is an online race management system.
- 14.4 For further information regarding handicaps and scoring at <https://www.sailsys.com.au>
- 14.5 SailSys applies the Racing Rules of Sailing Low Point System for scoring.

## 15. BERTHING

- 15.1 Boats shall be kept in their assigned places while in the harbour.
- 15.2 Entrants are responsible for organising their own berthing.
  - 15.2.1 For RQYS Marina Berths, please contact the RQYS Marina Office on 3396 8666 during business hours, **Berthing is limited early booking is essential.**

## 16. DATA PROTECTION

- 16.1 By participating in an event, a competitor automatically grants to the Organising Authority and the sponsors of the event, the right in perpetuity, to make, use and show, from time to time and at their discretion, any motion pictures, still pictures and live, taped or film television and other reproductions of him/her during the period of the competition for said event in which the competitor participated and in all material related to the said event without compensation.

## 17. RISK STATEMENT

- 17.1 RRS 3 states: 'The responsibility for a boat's decision to participate in a race or to continue to race is hers alone.' By participating in this event each competitor agrees and acknowledges that sailing is a potentially dangerous activity with inherent risks. These risks include strong winds and rough seas, sudden changes in weather, failure of equipment, boat handling errors, poor seamanship by other boats, loss of balance on an unstable platform and fatigue resulting in increased risk of injury. **Inherent in the sport of sailing is the risk of permanent, catastrophic injury or death by drowning, trauma, hypothermia or other causes.**
- 17.2 All participants are required to comply with any safety provisions as mandated under the Racing Rules of Sailing, the Australian Sailing Special Regulations Part 1 Category 5, and any Class Rules that may apply. The Squadron encourages and supports competitors who believe it is appropriate to exceed the above requirements (such as the wearing of helmets, body armour, impact vests, etc.) if they or their guardian believe that conditions and their personal circumstances warrant. All competitor's attention is drawn to the Risk Statement - Section 17 of the Notice of Race.

## 18. INSURANCE

- 18.1 Each participating boat shall be insured with valid third-party liability insurance with a minimum cover of \$10,000,000AUD per incident or the equivalent.

## **19. PRIZES**

### **19.1 Prizes will be given as follows:**

- 21.1.1 PHS 1<sup>st</sup>, 2<sup>nd</sup> and 3<sup>rd</sup> in each of Cruising and Performance Divisions for the Queensland Beneteau Cup
- 21.1.2 PHS 1<sup>st</sup>, 2<sup>nd</sup> and 3<sup>rd</sup> in each of Cruising and Performance Divisions for the Jeanneau Cup
- 21.1.3 PHS 1<sup>st</sup>, 2<sup>nd</sup> and 3<sup>rd</sup> in each of Cruising and Performance Divisions for the French Yacht Challenge
- 21.1.4 Interclub Challenge for the Queensland Beneteau Cup
- 21.1.5 Best Dressed French Themed Crew

### **19.2 Other prizes may be awarded at the discretion of the Organising Authority**

## **20. FURTHER INFORMATION**

### **20.1 For further information please contact:**

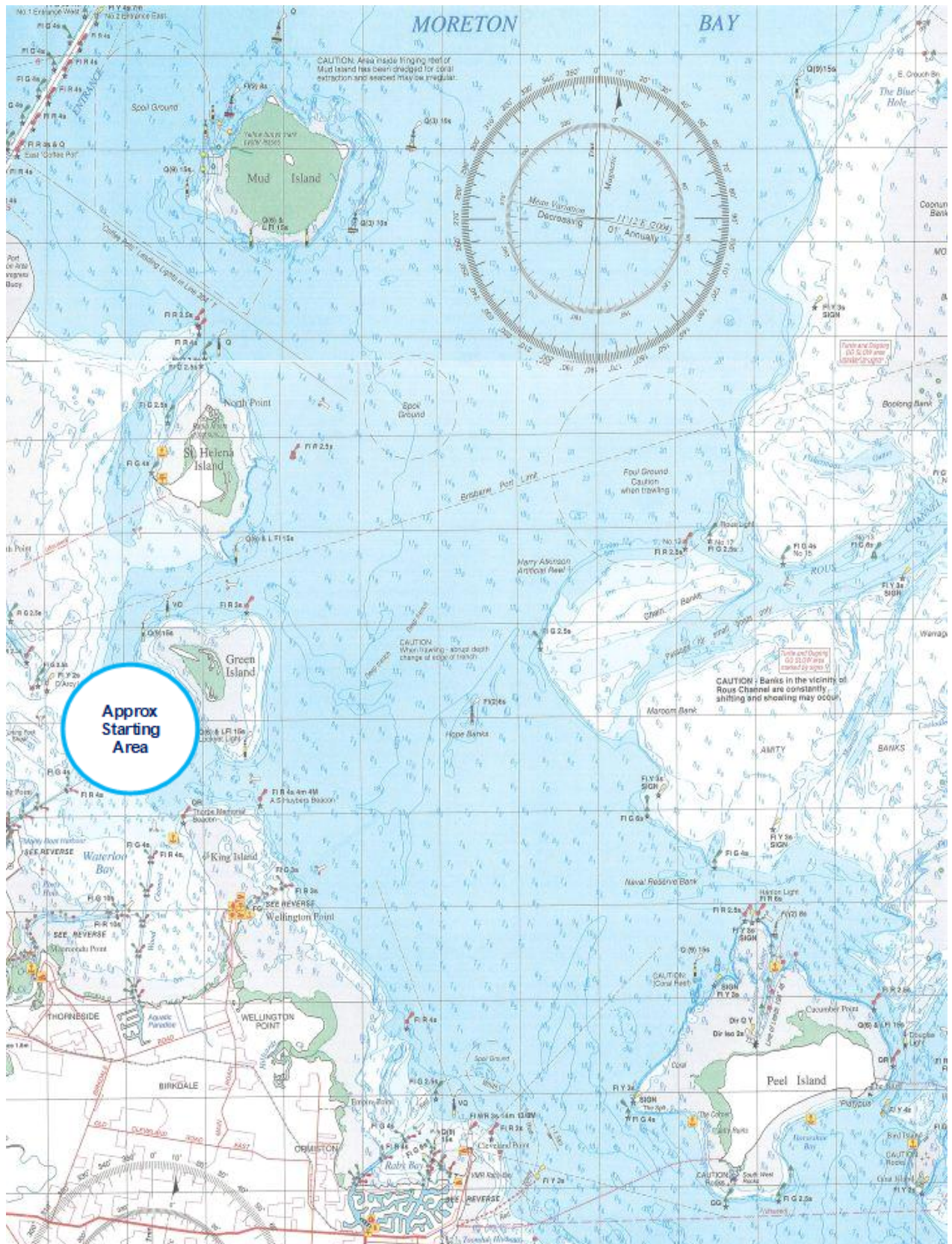
RQYS Sailing: 07 3396 8666 / [sailing@rqys.com.au](mailto:sailing@rqys.com.au)  
578 Royal Esplanade MANLY QLD 4179 AUS  
[www.rqys.com.au](http://www.rqys.com.au)

### **Queensland French Yacht Owners Association**

Rod Johannessen: 0400 950 587 / [president@qfyoa.com](mailto:president@qfyoa.com)



## Attachment A – Approximate Racing Area



# Attachment B – Location Information

## EMERGENCY CONTACTS

Emergencies	000	
RQYS Sailing Manager	0424 101 732	
Royal Queensland Yacht Squadron	(07) 3396 8666	578 Royal Esplanade, Manly QLD
Manly Coast Guard	(07) 3396 5911	40 Trafalgar St, Manly QLD
Wynnum Police	(07) 3308 8100	82 Pine St, Wynnum QLD
Wynnum Fire & Rescue	(07) 3396 3297	2006 Wynnum Rd, Wynnum West
Brisbane Water Police	(07) 3895 0333	2 Howard Smith Dr, Port of Brisbane

### Location, access & communication of Next of Kin Details

Sailing Office & SailSys Databases including information gathered from regatta registrations and/or indemnity forms.

### Location of Nearest Emergency Medical Facilities

Redlands Hospital	(07) 3488 3111	21 Weippin St, Cleveland QLD
-------------------	----------------	------------------------------

### Location of Nearest Medical Facilities

Wynnum Family Health Service	(07) 3893 0093	116 Edith St, Wynnum QLD
Doctors on Manly Road	(07) 3348 6111	12 Manly Rd, Manly QLD
Silky Oaks Medical Practice	(07) 3396 9855	218 Manly Rd, Manly QLD
Dental On Cambridge	(07) 3348 6661	4/99 Cambridge Parade, Manly QLD



## LOCAL SERVICES

### Sail Maker

#### North Sails

1/264 Tingal Rd, Wynnum QLD  
3396 5822

#### Hood Sails

181 Wynnum Esplanade, Wynnum QLD  
0419 799 958

#### Ullman Sails

112 Glenora St, Wynnum QLD  
(07) 3348 7245

### Chandlery

#### Muir Marine

453 Esplanade, Manly QLD  
(07) 3396 9988

#### Road Tech Marine

20 Redland Bay Rd, Capalaba QLD  
(07) 3914 9543

### Boat Building / Repairs – Located at RQYS

#### JSA Marine

(07) 3348 5682

#### David Glenn Boat Building

0412 878 144

### Physio

#### Manly Physiotherapy & Pilates

3/443 Esplanade, Manly QLD  
(07) 3396 8137

#### Bounce Physio Birkdale

190 Birkdale Rd, Birkdale QLD  
(07) 3822 2122

### Pharmacy

#### Manly Village Pharmacy

9/222 Stratton Terrace, Manly QLD  
(07) 3396 8999

### Groceries

#### IGA Manly Village

Cnr Stratton Tce & Cambridge Parade  
(07) 3396 1980

#### Woolworths Wynnum Central

145 Florence St, Wynnum QLD  
(07) 3513 4416

### Butcher

#### The Local Butcher

222 Stratton Terrace, Manly QLD  
(07) 3396 2195

### Bakery

#### Manly Bakery

222 Stratton Terrace, Manly QLD  
(07) 3396 5688

### Accommodation

#### [Manly Marine Cover Motel](#)

Located on the Grounds of RQYS  
(07) 3348 1000

#### Limited Camping Facilities at RQYS

[Limited camping MAY be available](#)  
(07) 3396 8666

#### [The Manly Hotel](#)

54 Cambridge Parade, Manly QLD  
(07) 3249 5999

#### [Waterloo Bay Hotel](#)

75 Berrima St, Wynnum QLD  
(07) 3893 2344

#### [Pelican's Nestle Inn](#)

149 Wynnum Esplanade, Wynnum QLD  
(07) 3396 3214

#### [Wynnum Anchor Motel](#)

14 Adam St, Wynnum QLD  
(07) 3396 3037

## LOCAL WEATHER TIDE

Local Weather:

The RQYS Weather Station can be found at:

<https://www.rqys.com.au/weather-station/>

The Weather Station records from above the club Bay Lookout.

BOM: Radar: <http://www.bom.gov.au/products/IDR663.loop.shtml>

Marine Forecast:

<http://www.bom.gov.au/qld/forecasts/moreton-bay.shtml>

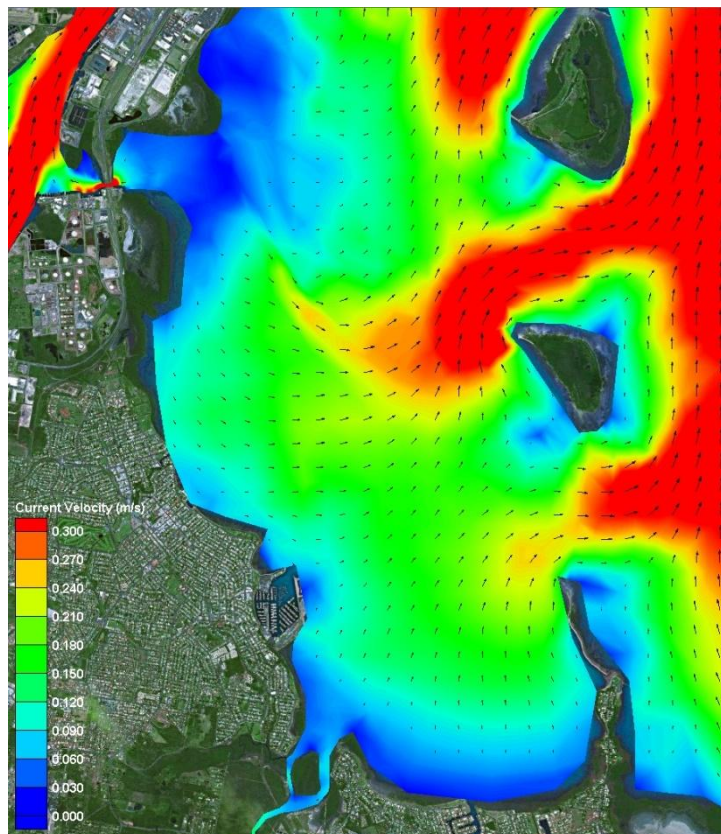
Other Popular forecasts:

Predict Wind: <https://forecast.predictwind.com/table/>

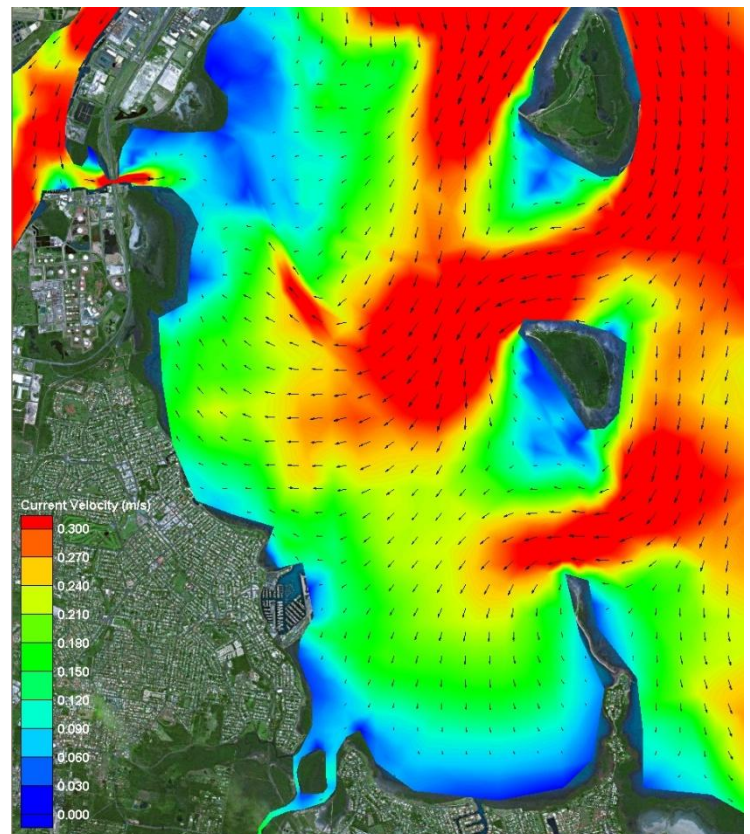
Seabreeze: <https://www.seabreeze.com.au/weather/wind-forecast/brisbane>

WillyWeather: <https://wind.willyweather.com.au/qld/brisbane/brisbane.html>

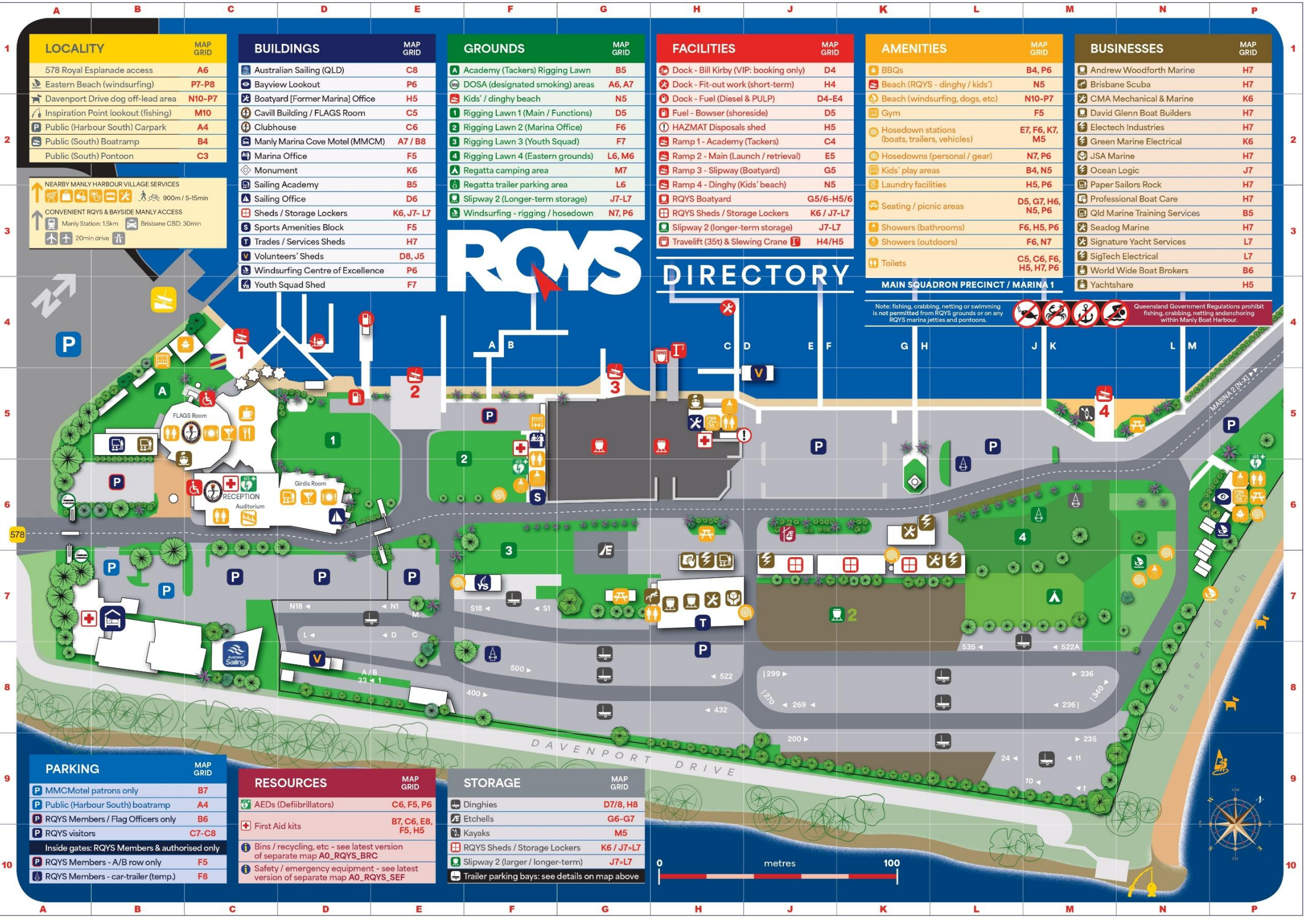
### Waterloo Bay Ebb



### Waterloo Bay Flood







LOCALITY		MAP GRID
578 Royal Esplanade access		A6
Eastern Beach (windsurfing)		P7-P8
Davenport Drive dog off-lead area		N10-P7
Inspiration Point lookout (fishing)		M10
Public (Harbour South) Carpark		A4
Public (South) Boatramp		B4
Public (South) Pontoon		C3

NEARBY MANLY HARBOUR VILLAGE SERVICES

900m / 5-15min

CONVENIENT RQYS & BAYSIDE MANLY ACCESS

Manly Station: 15km

Brisbane CBD: 30min

20min drive

BUILDINGS		MAP GRID
Australian Sailing (QLD)		C8
Bayview Lookout		P6
Boatyard [Former Marina] Office		H5
Cavill Building / FLAGS Room		C5
Clubhouse		C6
Manly Marina Cove Motel (MMCM)		A7 / B8
Marina Office		F5
Monument		K6
Sailing Academy		B5
Sailing Office		D6
Sheds / Storage Lockers		K6, J7- L7
Sports Amenities Block		F5
Trades / Services Sheds		H7
Volunteers' Sheds		D8, J5
Windsurfing Centre of Excellence		P6
Youth Squad Shed		F7

GROUNDS		MAP GRID
Academy (Tackers) Rigging Lawn		B5
DOSA (designated smoking) areas		A6, A7
Kids' / dinghy beach		N5
Rigging Lawn 1 (Main / Functions)		D5
Rigging Lawn 2 (Marina Office)		F6
Rigging Lawn 3 (Youth Squad)		F7
Rigging Lawn 4 (Eastern grounds)		L6, M6
Regatta camping area		M7
Regatta trailer parking area		L6
Slipway 2 (Longer-term storage)		J7-L7
Windsurfing - rigging / hosedown		N7, P6

FACILITIES		MAP GRID
Dock - Bill Kirby (VIP: booking only)		D4
Dock - Fit-out work (short-term)		H4
Dock - Fuel (Diesel & PULP)		D4-E4
Fuel - Bowser (shoreside)		D5
HAZMAT Disposals shed		H5
Ramp 1 - Academy (Tackers)		C4
Ramp 2 - Main (Launch / retrieval)		E5
Ramp 3 - Slipway (Boatyard)		G5
Ramp 4 - Dinghy (Kids' beach)		N5
RQYS Boatyard		G5/6-H5/6
RQYS Sheds / Storage Lockers		K6 / J7-L7
Slipway 2 (longer-term storage)		J7-L7
Travelift (35t) & Slewing Crane		H4/H5

AMENITIES		MAP GRID
BBQs		B4, P6
Beach (RQYS - dinghy / kids')		N5
Beach (windsurfing, dogs, etc)		N10-P7
Gym		F5
Hosedown stations (boats, trailers, vehicles)		E7, F6, K7, M5
Hosedowns (personal / gear)		N7, P6
Kids' play areas		B4, N5
Laundry facilities		H5, P6
Seating / picnic areas		D5, G7, H6, N5, P6
Showers (bathrooms)		F6, H5, P6
Showers (outdoors)		F6, N7
Toilets		C5, C6, F6, H5, H7, P6

BUSINESSES		MAP GRID
Andrew Woodforth Marine		H7
Brisbane Scuba		H7
CMA Mechanical & Marine		K6
David Glenn Boat Builders		H7
Electech Industries		H7
Green Marine Electrical		K6
JSA Marine		H7
Ocean Logic		J7
Paper Sailors Rock		H7
Professional Boat Care		H7
Qld Marine Training Services		B5
Seadog Marine		H7
Signature Yacht Services		L7
SigTech Electrical		L7
World Wide Boat Brokers		B6
Yachtshare		H5

# RQYS DIRECTORY

MAIN SQUADRON PRECINCT / MARINA 1

Note: fishing, crabbing, netting or swimming is not permitted from RQYS grounds or on any RQYS marina jetties and pontoons.

Queensland Government Regulations prohibit fishing, crabbing, netting and anchoring within Manly Boat Harbour.

PARKING		MAP GRID
MMCMotel patrons only		B7
Public (Harbour South) boatramp		A4
RQYS Members / Flag Officers only		B6
RQYS visitors		C7-C8
Inside gates: RQYS Members & authorised only		
RQYS Members - A/B row only		F5
RQYS Members - car-trailer (temp.)		F8

RESOURCES		MAP GRID
AEDs (Defibrillators)		C6, F5, P6
First Aid kits		B7, C6, E8, F5, H5
Bins / recycling, etc - see latest version of separate map A0_RQYS_BRC		
Safety / emergency equipment - see latest version of separate map A0_RQYS_SEF		

STORAGE		MAP GRID
Dinghies		D7/8, H8
Etchells		G6-G7
Kayaks		M5
RQYS Sheds / Storage Lockers		K6 / J7-L7
Slipway 2 (larger / longer-term)		J7-L7
Trailer parking bays: see details on map above		





# ROYAL QUEENSLAND YACHT SQUADRON – THE SAILING GATEWAY TO MORETON BAY



Waterloo Bay



~ Founded 1885 ~

[rqys.com.au](http://rqys.com.au)

[/RQYS.Manly](https://www.facebook.com/RQYS.Manly)

[/royal\\_qld\\_yacht\\_squadron](https://www.instagram.com/royal_qld_yacht_squadron)

