



---

# RQYS Yachts Winter Series 2025

## NOTICE OF RACE (NoR) Including **Amendment 1**

ORGANISING AUTHORITY

**ROYAL QUEENSLAND YACHT SQUADRON LTD**  
578 Royal Esplanade, Manly, QLD 4179

*The notation '[NP]' in a rule of the sailing instructions (SIs) means that a boat may not protest another boat for breaking that rule. This changes RRS 60.1.*

*The notation [DP] in a rule of the sailing instructions (SI's) means that a protest committee can award a penalty less than disqualification (including no penalty) at their discretion. This changes Rules 60.5 and 64.*

*The notation [SP] in a rule of the NoR and/or SIs means that a standard penalty may be applied by the race committee without a hearing per RRS60.5(b)(3).*

## **1. RULES**

- 1.1 The event is governed by the rules as defined in The Racing Rules of Sailing (RRS).
- 1.2 The Australian Sailing prescriptions and special regulations Part 1 – Category 5 Apply.
- 1.3 The current IRC/OMR rules shall apply to those yachts sailing under those measurement rules.
- 1.4 Where there is a difference between the Notice of Race (NoR) and the Sailing Instructions (SI) the SI take precedence.
- 1.5 RRS Appendix T – Arbitration will apply.
- 1.6 RRS 90.3(e) (Time Limit for changes to race scores) shall apply & is amended to read "... more than 72 hours after...".
  - 1.6 (a) Score reviews can be submitted at the RQYS Sailing Office or online at:  
[https://www.racingrulesofsailing.org/scoring\\_inquiries/new?event\\_id=10745](https://www.racingrulesofsailing.org/scoring_inquiries/new?event_id=10745)
- 1.7 [SP]The Skipper from each boat MUST fill in the [SailSys "Crew List"](#) (or contact the Sailing Office) for all sailors onboard competing in each race, prior to the start of the race.
  - 1.7 (a) Boats which are found to fail to provide a full crew list shall be given 1 warning, further infringements will result in a two (2) point penalty for that race.
    - See how to create your crew list [HERE](#)

## **2. CODE OF CONDUCT**

- 2.1 [DP] Competitors and support persons shall comply with reasonable requests from race officials.
- 2.2 [DP] Competitors and support persons shall handle any equipment or place advertising provided by the organizing authority with care, seamanship, in accordance with any instructions for its use and without interfering with its functionality.
- 2.3 Competitors must follow RQYS Club Policies (<https://www.rqys.com.au/membership/rules-and-regulations/> )

## **3. CHANGES TO RACE DOCUMENTS & SCHEDULE**

- 3.1 Any change to the race documents will be posted before 0900 on the day it will take effect, except that any change to the schedule of races will be posted by 2000 on the day before it will take effect.

## **4. SAILING INSTRUCTIONS**

- 4.1 The Sailing Instructions will be available after 1200hrs on 01<sup>st</sup> May 2025 at <https://www.rqys.com.au/rqys-yacht-winter-series-2025/>.

## 5. COMMUNICATION

- 5.1 The online official notice board is located at <https://www.rqys.com.au/rqys-yacht-winter-series-2025/>.
- 5.2 Secondary to the Official noticeboard “instant messaging” system WhatsApp may be used to notify skippers of timely information, confirmation of days course, Protest Time limit etc. Join the group at: <https://chat.whatsapp.com/HizbVHcOi3qGpyrQ1PS2Do>
- 5.3 The race office is located at The RQYS Sailing Office located adjacent to the Main Rigging Lawn, telephone 3396 8666, email [sailing@rqys.com.au](mailto:sailing@rqys.com.au) .
- 5.4 [DP] All boats shall carry a VHF radio capable of communicating on the [VHF maritime mobile band](#).
- 5.5 On the water, the race committee will make courtesy broadcasts to competitors on VHF radio. The channel will be stated in the SIs.
- 5.6 [DP] While racing, except in an emergency, a boat shall not make voice or data transmissions and shall not receive voice or data communication that is not available to all boats.

## 6. ELIGIBILITY AND ENTRY

- 6.1 Seasons entry is open to Yachts owned by financial members of the Royal Queensland Yacht Squadron.
- 6.2 All persons on board a boat while racing shall be members of a Club affiliated to Australian Sailing and have an Australian Sailing number, or hold a valid Sail Pass, or if an international competitor, be a member of club affiliated to a World Sailing recognised Member National Authority.
- 6.3 Casual Entries can be lodged in advance by use of the SailSys entry system, casual entry must be lodged before the first warning signal of the day.
- 6.4 Casual entrants are required to be a member of Australian Sailing by having membership with an Australian Sailing affiliated club, or by obtaining an RQYS Sail Pass. See RQYS policy page (<https://www.rqys.com.au/policiesanddocuments/> ) for further rules regarding day-pass membership.
- 6.5 Boats may enter the event by registering online at <https://www.rqys.com.au/rqys-yacht-winter-series-2025/>.
- 6.6 To be considered an entry in the event, a boat shall complete all registration requirements and pay all fees.
- 6.7 Late entries may be accepted at the discretion of the Organising Authority.

## 7. FEES

- 7.1 Fees shall be:  
RQYS Members Series Entry \$150.00  
RQYS Members Casual Entry \$35.00  
Non-Members Casual Entry \$40.00
- 7.2 Any Refunds will be as per the RQYS Sailing Refunds Policies (<https://www.rqys.com.au/membership/rules-and-regulations/>).

## 8. DIVISION & CLASS FLAGS

- 8.1 Division shall be split as follows:

Division	Split	Flag
Division 1	Monohull, PHS 0.950 & above	Numeral Pennant 1
Division 2	Monohull, PHS 0.949 and below	Numeral Pennant 2
Division 5	Multihull	Numeral Pennant 5

- 8.2 Divisions may be modified or combined based on number of entries and/or the discretion of the Race Committee.
- 8.3 The Race Committee may reallocate a boats division in the spirit of providing the best overall racing experience, this may override the division splits listed in NoR 8.1.

## **9. SCHEDULE**

- 9.1 Racing will be in accordance with the [Sailing Program](https://www.rqys.com.au/sailing-calendar/) published online (<https://www.rqys.com.au/sailing-calendar/>).
- 9.2 First Warning Shall be:
  - 9.2 (a) Division 1: 1045 hours.
  - 9.2 (b) Division 2: 1035 hours.
  - 9.2 (c) Division 5: 1055 hours.
- 9.3 A daily presentation shall be held at the conclusion of each days racing, the presentation shall be held in the RQYS bar at a time confirmed via WhatsApp (NoR 5.2).

## **10. EQUIPMENT INSPECTION**

- 10.1 Each IRC/OMR boat shall produce or verify the existence of a valid rating certificate.
- 10.2 Boats may be inspected at any time.

## **11. VENUE**

- 11.1 The location of the racing area shall be as displayed in the RQYS Yacht Course Book: <https://www.rqys.com.au/Yacht-CourseBook> .
- 11.2 NoR Attachment A shows the plan of the event venue.

## **12. COURSES**

- 12.1 The courses to be sailed shall be from the RQYS Yacht Course Book Version 3: <https://www.rqys.com.au/Yacht-CourseBook>

## **13. PENALTY SYSTEM**

- 13.1 RRS 44.1 is changed so that the Two-Turns Penalty is replaced by the One-Turn Penalty.

## **14. SCORING**

- 14.1 One (1) race is required to be completed to constitute a series.
  - 14.2 (a) When fewer than five (5) races have been completed, a boat's series score will be the total of her race scores.
  - 14.2 (b) When five (5) or more races have been completed, a boat's series score will be the total of her race scores excluding her worst score.
- 14.3 Average Points
  - 14.3 (a) Average points may be requested for series entries when racing is missed due to competing at a National or International regatta or a World Sailing ranked event in the competitor's class, or in any other circumstance approved by the Sailing Committee.
  - 14.3 (b) These points shall be awarded for no more than one (1) day in a season.
  - 14.3 (c) To receive average points, sailors must request average points in advance by emailing [sailing@rqys.com.au](mailto:sailing@rqys.com.au) and have this approved by the Sailing Committee BEFORE the missed day's racing.
  - 14.3 (d) Average Points will be awarded as per amended RRS A9 (a).

## 15. HANDICAPS

- 15.1 PHS Handicaps shall be allocated by the RQYS Handicap Committee for a vessels first race in the series, Subsequent races will be adjusted by the SailSys PHS system. Changes to a boat's sailing configuration or equipment shall be advised to the RQYS Sailing Office prior to the next race in which it intends to compete.
- 12.1.1 For further information regarding handicaps and scoring at <https://www.sailsys.com.au>
- 12.1.2 Request for review of handicap can be completed at <https://form.jotform.com/232208763124047> Request for reviews must be submitted 48 hrs before the first warning of the first race in the series.
- 15.2 IRC ratings shall be as per the online TCC Listings [available here](#) unless a valid certificate is provided to prove otherwise.
- 15.3 Yachts racing in the OMR divisions will not receive results without a valid rating with their relevant organisation. Any changes in rating shall be forwarded to the RQYS Sailing Office for the rating to be adjusted.

## 16. BERTHING

- 16.1 [NP] No vessels shall berth or rig on the RQYS Fuel Dock unless re-fuelling or approval obtained from the RQYS Sailing or Marina Office.
- 16.2 For RQYS Marina Berths or use of the VIP Docks, please contact the RQYS Marina Office on 3396 8666 during business hours.

## 17. DIVING EQUIPMENT AND PLASTIC POOLS

- 17.1 Underwater breathing apparatus and plastic pools or their equivalent shall not be used around keelboats between the preparatory signal of the first race and the end of the event.

## 18. DATA PROTECTION

- 18.1 By participating in an event, a competitor automatically grants to the Organising Authority and the sponsors of the event, the right in perpetuity, to make, use and show, from time to time and at their discretion, any motion pictures, still pictures and live, taped or film television and other reproductions of him/her during the period of the competition for said event in which the competitor participated and in all material related to the said event without compensation.

## 19. RISK STATEMENT

- 19.1 RRS 3 states: 'The responsibility for a boat's decision to participate in a race or to continue to race is hers alone.' By participating in this event each competitor agrees and acknowledges that sailing is a potentially dangerous activity with inherent risks. These risks include strong winds and rough seas, sudden changes in weather, failure of equipment, boat handling errors, poor seamanship by other boats, loss of balance on an unstable platform and fatigue resulting in increased risk of injury. **Inherent in the sport of sailing is the risk of permanent, catastrophic injury or death by drowning, trauma, hypothermia or other causes.**
- 19.2 All participants are required to comply with any safety provisions as mandated under the Racing Rules of Sailing, the Australian Sailing Special Regulations Part 1, and any Class Rules that may apply. The Squadron encourages and supports competitors who believe it is appropriate to exceed the above requirements (such as the wearing of helmets, body armour, impact vests, etc.) if they or their guardian believe that conditions and their personal circumstances warrant. All competitor's attention is drawn to the Risk Statement - Section 19 of the Notice of Race.

## 20. INSURANCE

- 20.1 Each participating boat shall be insured with valid third-party liability insurance with a minimum cover of \$10,000,000AUD per incident or the equivalent.

## **21. PRIZES**

21.1 Prizes will be awarded to:

21.1 (a) Series overall Division 1 Monohull 1<sup>st</sup>, 2<sup>nd</sup> & 3<sup>rd</sup> PHS for divisions with five (5) or more entries.

21.1 (b) Series overall Division 1 Monohull 1<sup>st</sup>, 2<sup>nd</sup> & 3<sup>rd</sup> IRC for divisions with five (5) or more entries.

21.1 (c) Series overall Division 2 Monohull 1<sup>st</sup>, 2<sup>nd</sup> & 3<sup>rd</sup> PHS for divisions with three (3) or more entries.

21.1 (d) Series overall Division 2 Monohull 1<sup>st</sup>, 2<sup>nd</sup> & 3<sup>rd</sup> IRC for divisions with three (3) or more entries.

21.1 (e) Series overall Multihull 1<sup>st</sup>, 2<sup>nd</sup> & 3<sup>rd</sup> PHS for divisions with three (3) or more entries.

21.1 (f) Series overall 1<sup>st</sup>, 2<sup>nd</sup> & 3<sup>rd</sup> OMR for divisions with three (3) or more entries.

21.2 Other prizes may be awarded at the discretion of the organising authority.

## **22. FURTHER INFORMATION**

22.1 For further information please contact:

RQYS Sailing: 07 3396 8666 / [sailing@rqys.com.au](mailto:sailing@rqys.com.au)

578 Royal Esplanade MANLY QLD 4179 AUS

[www.rqys.com.au](http://www.rqys.com.au)

# NoR Attachment A – Location Information

## EMERGENCY CONTACTS

---

Emergencies	000	
RQYS Sailing Manager	0424 101 732	
Royal Queensland Yacht Squadron	(07) 3396 8666	578 Royal Esplanade, Manly QLD
Manly Coast Guard	(07) 3396 5911	40 Trafalgar St, Manly QLD
Wynnum Police	(07) 3308 8100	82 Pine St, Wynnum QLD
Wynnum Fire & Rescue	(07) 3396 3297	2006 Wynnum Rd, Wynnum West
Brisbane Water Police	(07) 3895 0333	2 Howard Smith Dr, Port of Brisbane

### Location, access & communication of Next of Kin Details

Sailing Office & SailSys Databases including information gathered from regatta registrations and/or indemnity forms.

### Location of Nearest Emergency Medical Facilities

Redlands Hospital	(07) 3488 3111	21 Weippin St, Cleveland QLD
-------------------	----------------	------------------------------

### Location of Nearest Medical Facilities

Wynnum Family Health Service	(07) 3893 0093	116 Edith St, Wynnum QLD
Doctors on Manly Road	(07) 3348 6111	12 Manly Rd, Manly QLD
Silky Oaks Medical Practice	(07) 3396 9855	218 Manly Rd, Manly QLD
Dental On Cambridge	(07) 3348 6661	4/99 Cambridge Parade, Manly QLD

## LOCAL SERVICES

### Sail Maker

#### North Sails

1/264 Tingal Rd, Wynnum QLD  
3396 5822

#### Hood Sails

181 Wynnum Esplanade, Wynnum QLD  
0419 799 958

#### Ullman Sails

112 Glenora St, Wynnum QLD  
(07) 3348 7245

### Chandlery

#### Muir Marine

453 Esplanade, Manly QLD  
(07) 3396 9988

#### Road Tech Marine

20 Redland Bay Rd, Capalaba QLD  
(07) 3914 9543

### Boat Building / Repairs – Located at RQYS

#### JSA Marine

(07) 3348 5682

#### David Glenn Boat Building

0412 878 144

### Physio

#### Manly Physiotherapy & Pilates

3/443 Esplanade, Manly QLD  
(07) 3396 8137

#### Bounce Physio Birkdale

190 Birkdale Rd, Birkdale QLD  
(07) 3822 2122

### Pharmacy

#### Manly Village Pharmacy

9/222 Stratton Terrace, Manly QLD  
(07) 3396 8999

### Groceries

#### IGA Manly Village

Cnr Stratton Tce & Cambridge Parade  
(07) 3396 1980

#### Woolworths Wynnum Central

145 Florence St, Wynnum QLD  
(07) 3513 4416

### Butcher

#### The Local Butcher

222 Stratton Terrace, Manly QLD  
(07) 3396 2195

### Bakery

#### Manly Bakery

222 Stratton Terrace, Manly QLD  
(07) 3396 5688

### Accommodation

#### [Manly Marine Cover Motel](#)

Located on the Grounds of RQYS  
(07) 3348 1000

#### Limited Camping Facilities at RQYS

[Limited camping MAY be available](#)  
(07) 3396 8666

#### [The Manly Hotel](#)

54 Cambridge Parade, Manly QLD  
(07) 3249 5999

#### [Waterloo Bay Hotel](#)

75 Berrima St, Wynnum QLD  
(07) 3893 2344

#### [Pelican's Nestle Inn](#)

149 Wynnum Esplanade, Wynnum QLD  
(07) 3396 3214

#### [Wynnum Anchor Motel](#)

14 Adam St, Wynnum QLD  
(07) 3396 3037

## LOCAL WEATHER TIDE

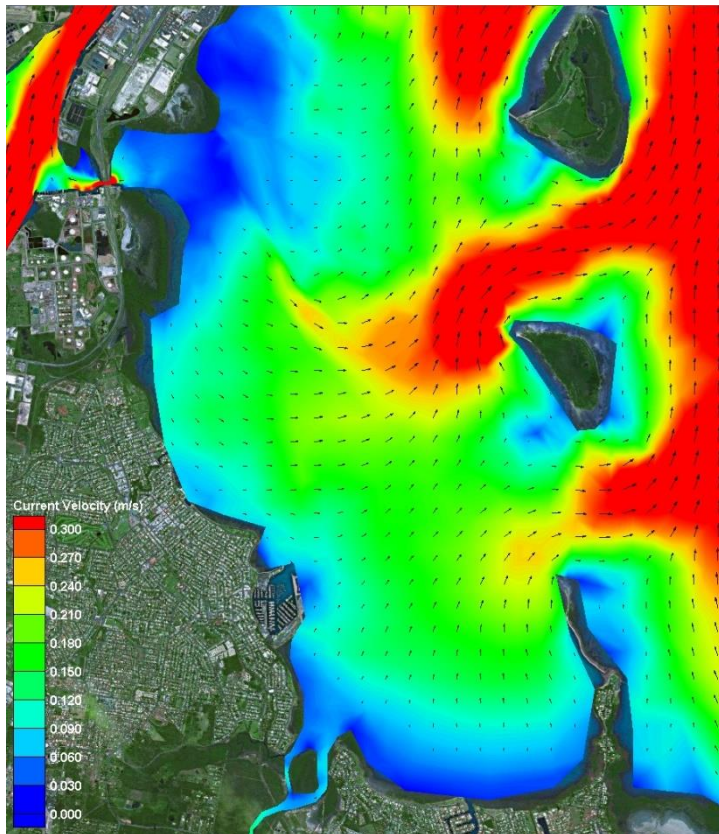
Local Weather: The RQYS Weather Station can be found at:  
<https://www.rqys.com.au/weather-station/>  
The Weather Station records from above the club Bay Lookout.

BOM: Radar: <http://www.bom.gov.au/products/IDR663.loop.shtml>  
Marine Forecast:  
<http://www.bom.gov.au/qld/forecasts/moreton-bay.shtml>

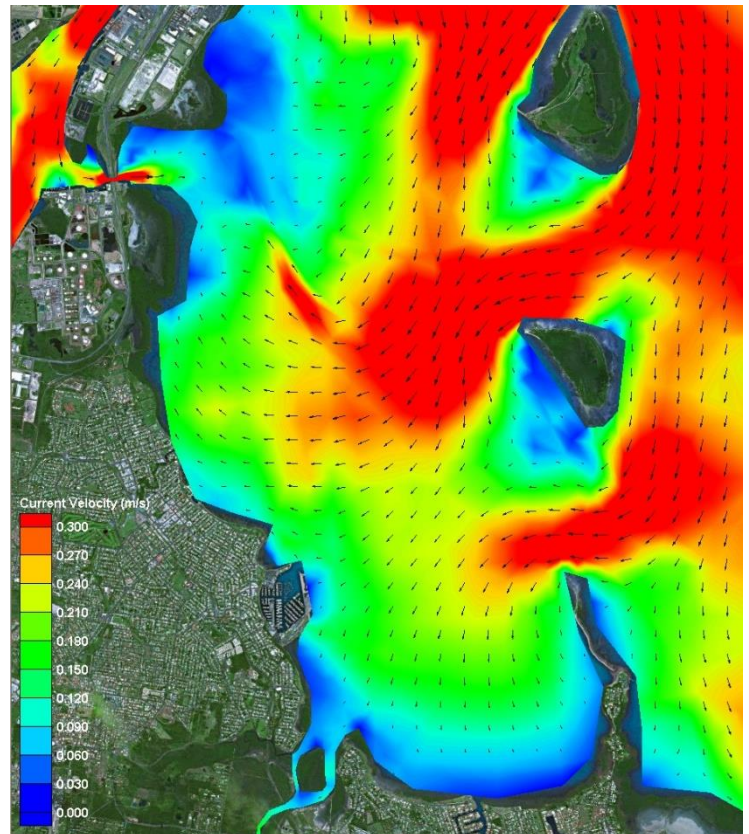
Other Popular forecasts:

Predict Wind: <https://forecast.predictwind.com/table/>  
Seabreeze: <https://www.seabreeze.com.au/weather/wind-forecast/brisbane>  
WillyWeather: <https://wind.willyweather.com.au/qld/brisbane/brisbane.html>

**Waterloo Bay Ebb**



**Waterloo Bay Flood**



LOCALITY		MAP GRID
578 Royal Esplanade access		A6
Eastern Beach (windsurfing)		P7-P8
Davenport Drive dog off-lead area		N10-P7
Inspiration Point lookout (fishing)		M10
Public (Harbour South) Carpark		A4
Public (South) Boatramp		B4
Public (South) Pontoon		C3

**NEARBY MANLY HARBOUR VILLAGE SERVICES**  
 900m / 5-15min

**CONVENIENT RQYS & BAYSIDE MANLY ACCESS**  
 Manly Station: 1.5km  
 Brisbane CBD: 30min  
 20min drive

BUILDINGS		MAP GRID
Australian Sailing (QLD)		C8
Bayview Lookout		P6
Boatyard [Former Marina] Office		H5
Cavill Building / FLAGS Room		C5
Clubhouse		C6
Manly Marina Cove Motel (MMCM)		A7 / B8
Marina Office		F5
Monument		K6
Sailing Academy		B5
Sailing Office		D6
Sheds / Storage Lockers		K6, J7- L7
Sports Amenities Block		F5
Trades / Services Sheds		H7
Volunteers' Sheds		D8, J5
Windsurfing Centre of Excellence		P6
Youth Squad Shed		F7

GROUNDS		MAP GRID
A Academy (Tackers) Rigging Lawn		B5
DOSA (designated smoking) areas		A6, A7
Kids' / dinghy beach		N5
1 Rigging Lawn 1 (Main / Functions)		D5
2 Rigging Lawn 2 (Marina Office)		F6
3 Rigging Lawn 3 (Youth Squad)		F7
4 Rigging Lawn 4 (Eastern grounds)		L6, M6
Regatta camping area		M7
Regatta trailer parking area		L6
Slipway 2 (Longer-term storage)		J7-L7
Windsurfing - rigging / hosedown		N7, P6

FACILITIES		MAP GRID
Dock - Bill Kirby (VIP: booking only)		D4
Dock - Fit-out work (short-term)		H4
Dock - Fuel (Diesel & PULP)		D4-E4
Fuel - Bowser (shoreside)		D5
HAZMAT Disposals shed		H5
Ramp 1 - Academy (Tackers)		C4
Ramp 2 - Main (Launch / retrieval)		E5
Ramp 3 - Slipway (Boatyard)		G5
Ramp 4 - Dinghy (Kids' beach)		N5
RQYS Boatyard		G5/6-H5/6
RQYS Sheds / Storage Lockers		K6 / J7-L7
Slipway 2 (longer-term storage)		J7-L7
Travelift (35t) & Slewing Crane		H4/H5

AMENITIES		MAP GRID
BBQs		B4, P6
Beach (RQYS - dinghy / kids')		N5
Beach (windsurfing, dogs, etc)		N10-P7
Gym		F5
Hosedown stations (boats, trailers, vehicles)		E7, F6, K7, M5
Hosedowns (personal / gear)		N7, P6
Kids' play areas		B4, N5
Laundry facilities		H5, P6
Seating / picnic areas		D5, G7, H6, N5, P6
Showers (bathrooms)		F6, H5, P6
Showers (outdoors)		F6, N7
Toilets		C5, C6, F6, H5, H7, P6

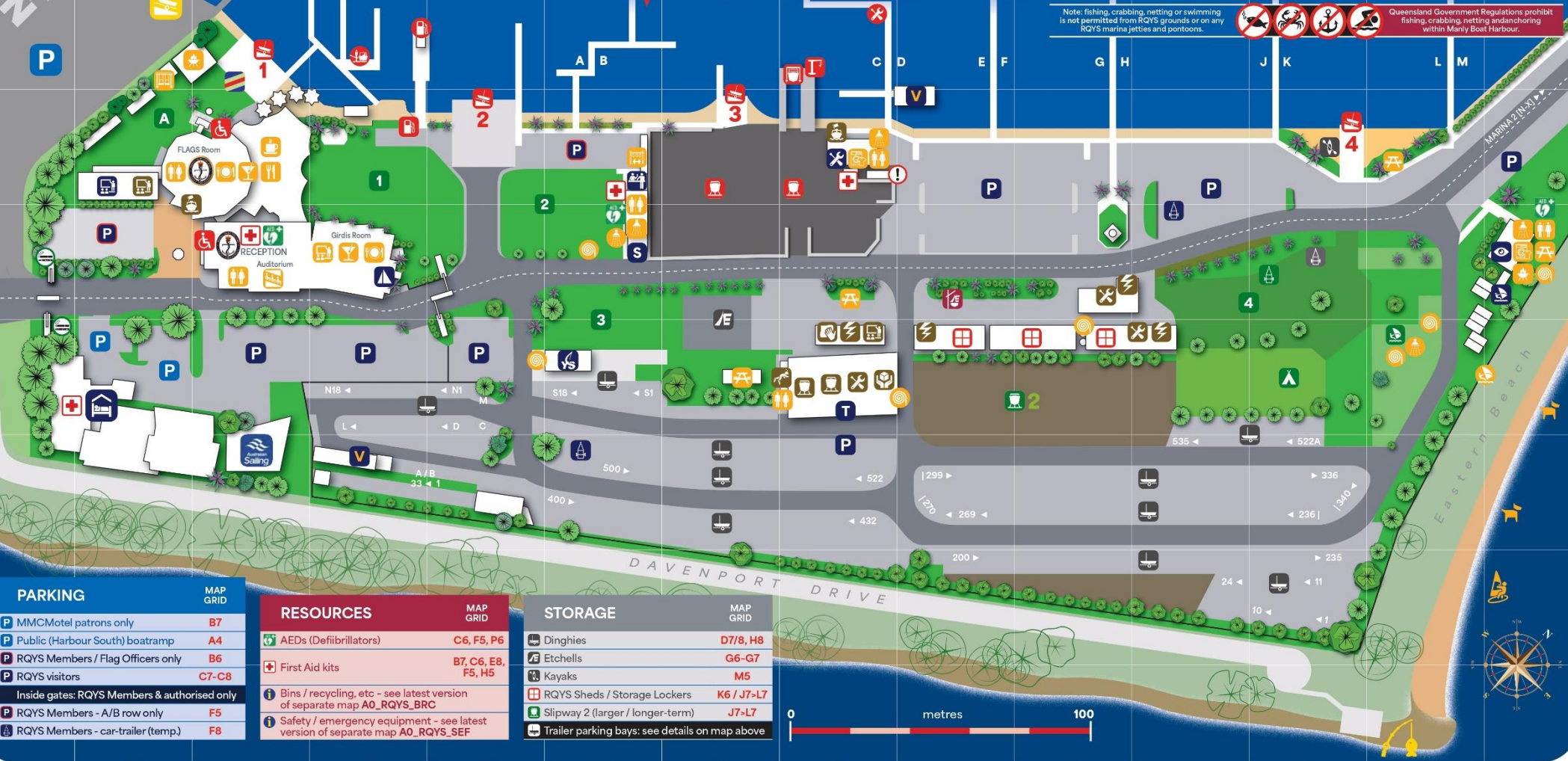
BUSINESSES		MAP GRID
Andrew Woodforth Marine		H7
Brisbane Scuba		H7
CMA Mechanical & Marine		K6
David Glenn Boat Builders		H7
Electech Industries		H7
Green Marine Electrical		K6
JSA Marine		H7
Ocean Logic		J7
Paper Sailors Rock		H7
Professional Boat Care		H7
Qld Marine Training Services		B5
Seadog Marine		H7
Signature Yacht Services		L7
SigTech Electrical		L7
World Wide Boat Brokers		B6
Yachtshare		H5

# RQYS DIRECTORY

**MAIN SQUADRON PRECINCT / MARINA 1**

Note: fishing, crabbing, netting or swimming is not permitted from RQYS grounds or on any RQYS marina jetties and pontoons.

Queensland Government Regulations prohibit fishing, crabbing, netting and anchoring within Manly Boat Harbour.



PARKING		MAP GRID
MMCMotel patrons only		B7
Public (Harbour South) boatramp		A4
RQYS Members / Flag Officers only		B6
RQYS visitors		C7-C8
Inside gates: RQYS Members & authorised only		
RQYS Members - A/B row only		F5
RQYS Members - car-trailer (temp.)		F8

RESOURCES		MAP GRID
AEDs (Defibrillators)		C6, F5, P6
First Aid kits		B7, C6, E8, F5, H5
Bins / recycling, etc - see latest version of separate map A0_RQYS_BRC		
Safety / emergency equipment - see latest version of separate map A0_RQYS_SEF		

STORAGE		MAP GRID
Dinghies		D7/8, H8
Etchells		G6-G7
Kayaks		M5
RQYS Sheds / Storage Lockers		K6 / J7-L7
Slipway 2 (larger / longer-term)		J7-L7
Trailer parking bays: see details on map above		

# ROYAL QUEENSLAND YACHT SQUADRON – THE SAILING GATEWAY TO MORETON BAY

Gold Coast

75km

Brisbane CBD

Sunshine Coast

100km



Waterloo Bay



~ Founded 1885 ~

[rqys.com.au](http://rqys.com.au)

[/RQYS.Manly](https://www.facebook.com/RQYS.Manly) [/royal\\_qld\\_yacht\\_squadron](https://www.instagram.com/royal_qld_yacht_squadron)





---

# **RQYS Yachts**

## **Winter Series 2025**

# **SAILING INSTRUCTIONS**

## **(SI)**

Organising Authority  
**ROYAL QUEENSLAND YACHT SQUADRON LTD**  
578 Royal Esplanade, Manly, QLD 4179

*The notation [NP] in a rule of the sailing instructions (SIs) means that a boat may not protest another boat for breaking that rule. This changes RRS 60.1.*

*The notation [DP] in a rule of the sailing instructions (SI's) means that a protest committee can award a penalty less than disqualification (including no penalty) at their discretion. This changes Rules 60.5 and 64.*

*The notation [SP] in a rule of the NoR and/or SIs means that a standard penalty may be applied by the race committee without a hearing per RRS60.5(b)(3). This changes RRS A5.*

## **1. COMMUNICATION WITH COMPETITORS**

- 1.1. On the water, the race committee intends to monitor and communicate with competitors on VHF radio channel 72.
- 1.2. If the race committee displays code flag L alternate VHF channel 77 will be used. This changes SI 1.1.

## **2. SIGNALS MADE ASHORE**

- 2.1. Signals made ashore will be displayed at the official flagpole located at the top of the Eastern Gangway of the Bill Kirby Docks.
- 2.2. When flag AP is displayed ashore, '1 minute' is replaced with 'not less than 60 minutes' in Race Signals AP.

## **3. MARKS**

- 3.1. Designated fixed marks are described in the RQYS Yacht Course Book Version 3:  
<https://www.rqys.com.au/Yacht-CourseBook>

## **4. THE START**

- 4.1. The starting line is between a staff displaying an orange flag on the signal vessel at the starboard end and the course side of the port-end starting mark.
- 4.2. Boats whose warning signal has not been made shall avoid the starting area during the starting sequence for other races.
- 4.3. If any part of a boat's hull is on the course side of the starting line at her starting signal and she is identified, the race committee will attempt to hail her sail number on VHF (channel per SI 1). A boat may not request redress based on failure of the race committee to hail her number, failure of her to hear such a hail, or the order in which boats are hailed. This changes RRS 61.1(a)
- 4.4. A boat that does not start within ten (10) minutes after her starting signal will be scored Did Not Start without a hearing. This changes RRS A5.1 and A5.2.

## **5. THE FINISH**

- 5.1. The finishing line shall be between a staff displaying a blue flag on the finishing boat and the course side of the finishing mark.
- 5.2. When there is no race committee vessel on station at the finish the alternate finish line shall be an extension of the Eastern most Port and Starboard Lateral Beacons to the south end within 100m. In this case, yachts are required to declare to the Sailing Office their finish time. Finish declarations shall be lodged at the Sailing Office in person or by phone ([sailing@rqys.com.au](mailto:sailing@rqys.com.au) or 0404 900 546) within 2 hours following the completion of the race and shall include the name of the yacht, skipper and finishing time to Eastern Standard Time.

## **6. TIME LIMITS AND TARGET TIMES**

- 6.1. The Race Time Limit (see RRS 35) shall be 1700 hrs.

## **7. HEARING REQUESTS**

- 7.1. For each division, the protest time limit is 90 minutes after the last boat in that division finishes the last race of the day or the race committee signals no more racing today, whichever is later. The time will be posted on the official notice board.
- 7.2. Hearing request forms are available from and shall be lodged with the race office at <https://www.rqys.com.au/documents-auditing/>.
- 7.3. Notices will be posted no later than 30 minutes after the protest time limit to inform competitors of hearings in which they are parties or named as witnesses. Hearings will be held at a time and place advised on the hearing notice.

## **8. [NP][DP]SAFETY REGULATIONS**

- 8.1. All skippers shall SIGN ON prior to the first warning signal each day with the start boat on VHF Ch 72. Boats failing to sign on may be scored DNC without a hearing. This changes RRS 60.5 (b), A4 and A5.
- 8.2. All Maritime Queensland Aquatic Event conditions must be followed including:
  - 8.2.1. All Participating ships are not to impede power driven vessels traversing Manly Boat Harbour and associated channels.
  - 8.2.2. All Participating ships are to obey the gazetted speed limit in Manly Boat Harbour (6 knots).
- 8.3. No Spinnakers are to be flown in the Manly Harbour 6-knot area.
- 8.4. No sailing vessel shall berth on or impede traffic to/from the RQYS fuel dock without permission from the RQYS Sailing or Marina Office.
- 8.5. A boat that retires from a race shall notify the race committee at the first reasonable opportunity.

## **9. REPLACEMENT OF EQUIPMENT**

- 9.1. Boats intending to race with a sail number other than that stipulated on their entry shall advise the sailing office in writing of the change, prior to racing. Failure to comply shall result in the boat being scored DNC for all races on that day. This changes RRS 60.5 (b), A4 and A5.

## **10. EQUIPMENT AND MEASUREMENT CHECKS**

- 10.1. A boat or equipment may be inspected at any time for compliance with the class rules, notice of race and sailing instructions.
- 10.2. [DP] When instructed by a race official on the water, a boat shall proceed to a designated area for inspection.

## **11. OFFICIAL VESSELS**

- 11.1. Official vessels will be identified by displaying a white flag with letter 'RC' or 'red 'MEDIA' / 'M'.