



GILL QUEENSLAND

YOUTH WEEK

10th July to 13th July 2025

NOTICE OF RACE

(NoR)

ORGANISING AUTHORITY

ROYAL QUEENSLAND YACHT SQUADRON LTD
578 Royal Esplanade, Manly, QLD 4179

The notation '[NP]' in a rule of the Notice of Race (NoR) means that a boat may not protest another boat for breaking that rule. This changes RRS 60.1.

The notation '[DP]' in a rule of the Notice of Race means that a protest committee can award a penalty less than disqualification (including no penalty) at their discretion. This changes Rules 60.5 and 64.

1. RULES

- 1.1 The event is governed by the rules as defined in The Racing Rules of Sailing (RRS).
- 1.2 The Australian Sailing prescriptions and special regulations Part 2 will apply.
- 1.3 Where there is a difference between the Notice of Race (NoR) and the Sailing Instructions (SI) the SI take precedence.
- 1.4 RRS 90.3(e) shall apply (Time Limit for changes to race scores).
- 1.5 RRS Appendix T - Arbitration shall apply.
- 1.6 RRS Appendix P – shall apply to boats on Bravo & Charlie Course.
- 1.7 RRS Appendix WF – Wing foiling racing rules will apply.
 - 1.7 (a) Wind, Wing & IQFoil crew shall wear a helmet to the minimum standard EN1385, EN1077, EN 966, ASTM 2040, Snell S98 or equivalent, with a brightly coloured region of at least 300 square centimetres of the exterior surface that can be seen from above the water with crew lying face down or face up.
 - 1.7 (b) Wind Foil crew shall wear an impact vest which comply with the minimum standard ISO 12402-5, or USCG Type III, or AS 4758 Level 50 or equivalent, and shall be used at all times. An impact vest is a garment worn on the torso which is specifically designed to protect the wearer around the torso from impact.
- 1.8 Sailors in the Nacra 15 class shall wear a suitable helmet at all times while racing.

2. CODE OF CONDUCT

- 2.1 [DP] Competitors and support persons shall comply with reasonable requests from race officials.
- 2.2 [DP] Competitors and support persons shall handle any equipment or place advertising provided by the organizing authority with care, seamanship, in accordance with any instructions for its use and without interfering with its functionality.
- 2.3 Competitors must follow RQYS Club Policies (<https://www.rqys.com.au/membership/rules-and-regulations/>)

3. CHANGES TO RACE DOCUMENTS & SCHEDULE

- 3.1 Any change to the race documents will be posted before 0900 on the day it will take effect, except that any change to the schedule of races will be posted by 2000 on the day before it will take effect.

4. SAILING INSTRUCTIONS

- 4.1 The Sailing Instructions will be available after 1200 hrs on 04th July 2025 at <https://www.rqys.com.au/qld-youthweek-25/> .

5. COMMUNICATION

- 5.1 The online official notice board is located at <https://www.rqys.com.au/qld-youthweek-25/>.
- 5.2 Secondary to the Official noticeboard “instant messaging” system WhatsApp may be used to notify skippers of timely information, confirmation of days course, Protest Time limit etc. join the group [HERE](#).
- 5.3 The race office is located at The RQYS Sailing Office located adjacent to the Main Rigging Lawn, telephone 3396 8666, email sailing@rqys.com.au .
- 5.4 [DP] While racing, except in an emergency, a boat shall not make voice or data transmissions and shall not receive voice or data communication that is not available to all boats.

6. ELIGIBILITY AND ENTRY

- 6.1 The event is open to all boats of the World Sailing preferred youth classes as well as selected youth and junior nationally recognized classes, with a minimum of five (5) entries.
- 6.2 Non – exclusive indicative list of classes:
Alpha Course (29er, 420, Hobie 16, Nacra 15, iQFOIL and WingFoil)
Bravo Course (ILCA4, ILCA6, Raceboard and Techno Windsurfing)
Charlie Course (Flying 11, O'pen Skiff, Pacer, RS Feva, Sabot, Optimist (Green, Intermediate, and Open divisions))
- 6.3 All competitors shall be **under 23 years** on the date of 31 December 2025.
- 6.4 All entrants including skippers and crew must be a member of Australian Sailing (AS) at both the time of entry and for the duration of the event. Check your AS Membership Number here: <https://www.sailing.org.au/member-finder/>.
- 6.5 Boats may enter the event by registering online at <https://www.rqys.com.au/qld-youthweek-25/> by 03rd July 2025.
- 6.6 To be considered an entry in the event, a boat shall complete all registration requirements and pay all fees.
- 6.7 Late entries will be accepted at the discretion of the Organising Authority.

7. FEES

- 7.1 Required fees are as follows:

Early-bird Entry Fee (up to 1600 hours on 25th June 2025)

Single Handed Classes \$200.00

Double Handed Classes \$245.00

Standard Entry Fee (as of 1601 hours on 26th June 2025)

Single Handed Classes \$240.00

Double Handed Classes \$285.00

Support/Coach Boat Registration (Compulsory, includes Berthing)

All boats \$30.00 – Boats with an OA approved support boat sticker shall receive a \$10.00 discount.

Registration can be done online here: <https://www.revolutionise.com.au/rqys/events/292004>

- 7.2 Any Refunds will be as per the RQYS Sailing Refunds Policies (<https://www.rqys.com.au/membership/rules-and-regulations/>).

8. SUPPORT PERSON VESSELS

- 8.1 Coaches supporting athletes at the event shall register with the Organising Authority [online](#) prior to registration close (10/07/2025). Registration entitles coaches to a range of benefits including, overnight berthing, refuelling facilities, communication with athletes and access to racecourse outside of 50m of any competitor or mark between start signal and finish of last boat, except when asked to assist by the Race Committee.
- 8.2 Registration shall be completed by registering the support boat/s online and then collecting a numbered and coloured sticker from the Regatta Office upon arrival, prior to launching the support boat.
- 8.3 Support and spectator boats that do not register shall not be permitted to launch or retrieve from RQYS premises, or berth there overnight; the Organising Authority reserves the right to remove such vessels from their premises.
- 8.4 All support/coach boats must have the capability to communicate with the Race Committee on VHF 72 and 77 throughout the regatta.
- 8.5 Support vessels must remain in their assigned places in the harbour.
- 8.6 All Support Vessels shall use the Public ramp adjacent to the club for launching and retrieving between 1100hrs 10 July – and 1600hrs 13 July (See NoR “Location Information” – Access to RQYS for more information).

9. ADVERTISING

9.1 Boats may be required to display advertising chosen and supplied by the organizing authority.

10. INDICATIVE SCHEDULE

10.1 The Sailing Instructions schedule shall take precedence.

10.2

Date	Event	Time/First Warning
Wednesday 09 th July 2025	Registration in the Girdis Room	1000 – 1600 hrs
Thursday 10 th July 2025	Registration in the Girdis Room	0800 hrs – 1100 hrs
	Compulsory Competitors Meeting on Main Rigging Lawn	0900 hrs
	Racing – Charlie Course First Warning Signal	1230 hrs
	– Bravo Course First Warning Signal	1300 hrs
	– Alpha Course First Warning Signal	1330 hrs
	Racing – Alpha Course First Warning Signal	1000 hrs
	– Bravo Course First Warning Signal	1030 hrs
	– Charlie Course First Warning Signal	1100hrs
Friday 11 th July 2025 & Saturday 12 th July 2025	Racing – Charlie Course First Warning Signal	1000 hrs
	– Bravo Course First Warning Signal	1030 hrs
	– Alpha Course First Warning Signal	1100hrs
Sunday 13 th July 2025	Racing – Charlie Course First Warning Signal	1000 hrs
	– Bravo Course First Warning Signal	1030 hrs
	– Alpha Course First Warning Signal	1100hrs
	Sausage Sizzle on Main Rigging Lawn	60 minutes after last boat finishes
	Presentation in the Girdis Room	90 minutes after the last boat finishes

10.3 On the last scheduled day of racing no warning signal will be made after 1530 hrs.

10.4 A maximum of 2 races will be sailed on 10th July & 13th July and a maximum of 3 races will be sailed on 11th July & 12th July.

10.5 A maximum of ten (10) races are scheduled for the regatta.

11. EQUIPMENT INSPECTION

11.1 Boats may be inspected at any time.

12. VENUE

12.1 NoR Attachment A shows the location of the racing areas.

12.2 NoR Attachment E shows the location information of the event venue.

13. COURSES

13.1 The courses to be sailed will be detailed in the Sailing Instructions.

14. PENALTY SYSTEM

14.1 For all classes on Alpha Course RRS 44.1 is changed so that the Two-Turns Penalty is replaced by the One-Turn Penalty.

15. SCORING

- 15.1 Three (3) races are required to be completed to constitute a series
- 15.2 (a) When fewer than 4 races have been completed, a boat's series score will be the total of her race scores.
- 15.2 (b) When from 4 to 8 races have been completed, a boat's series score will be the total of her race scores excluding her worst score.
- 15.2 (c) When 9 or more races have been completed, a boat's series score will be the total of her race scores excluding her two worst scores.

16. CHARTERED OR LOANED BOATS

- 16.1 A chartered or loaned boat may carry national letters or a sail number in contravention of her class rules, provided that the race committee has approved her sail identification before the first race.

17. BERTHING

- 17.1 [NP][DP] Boats shall be kept in their assigned places as follows (See NoR Attachment B for locations):
- 17.1 (a) Alpha Course boats are to be on "Lawn 2".
- 17.1 (b) Alpha Course Catamarans may be on "Main Lawn" closest to "Lawn 2".
- 17.1 (c) Bravo Course boats are to be on "Lawn 2 and 3".
- 17.1 (d) Charlie Course boats are to be on "Main Lawn" closest to the café and the Opti Lawn.
- 17.1 (e) Windsurfers are to be on "Windsurfing Lawn" (See NoR Attachment C & D).
- 17.2 See NoR Attachment D for Road Trailer storage Locations.
- 17.3 Restrictions may be placed on where vessels may be stored or rigged by the RQYS Sailing or Marina office.
- 17.4 Boats may only be stored on the RQYS rigging lawn for the duration of the regatta & 24hrs before/after the regatta, unless otherwise approved by the OA.
- 17.5 No tie down restraints may penetrate the ground deeper than 300mm due to lawn irrigation systems.

18. DATA PROTECTION

- 18.1 By participating in an event, a competitor automatically grants to the Organising Authority and the sponsors of the event, the right in perpetuity, to make, use and show, from time to time and at their discretion, any motion pictures, still pictures and live, taped or film television and other reproductions of him/her during the period of the competition for said event in which the competitor participated and in all material related to the said event without compensation.

19. RISK STATEMENT

- 19.1 RRS 3 states: 'The responsibility for a boat's decision to participate in a race or to continue to race is hers alone.' By participating in this event each competitor agrees and acknowledges that sailing is a potentially dangerous activity with inherent risks. These risks include strong winds and rough seas, sudden changes in weather, failure of equipment, boat handling errors, poor seamanship by other boats, loss of balance on an unstable platform and fatigue resulting in increased risk of injury. **Inherent in the sport of sailing is the risk of permanent, catastrophic injury or death by drowning, trauma, hypothermia or other causes.**
- 19.2 All participants are required to comply with any safety provisions as mandated under the Racing Rules of Sailing, the Australian Sailing Special Regulations Part 2 for Off The Beach Boats, and any Class Rules that may apply. The Squadron encourages and supports competitors who believe it is appropriate to exceed the above requirements (such as the wearing of helmets, body armour, impact vests, etc.) if they or their guardian believe that conditions and their personal circumstances warrant. All competitor's attention is drawn to the Risk Statement - Section 19 of the Notice of Race.

20. INSURANCE

- 20.1 Each participating boat shall be insured with valid third-party liability insurance with a minimum cover of \$10,000,000AUD per incident or the equivalent.

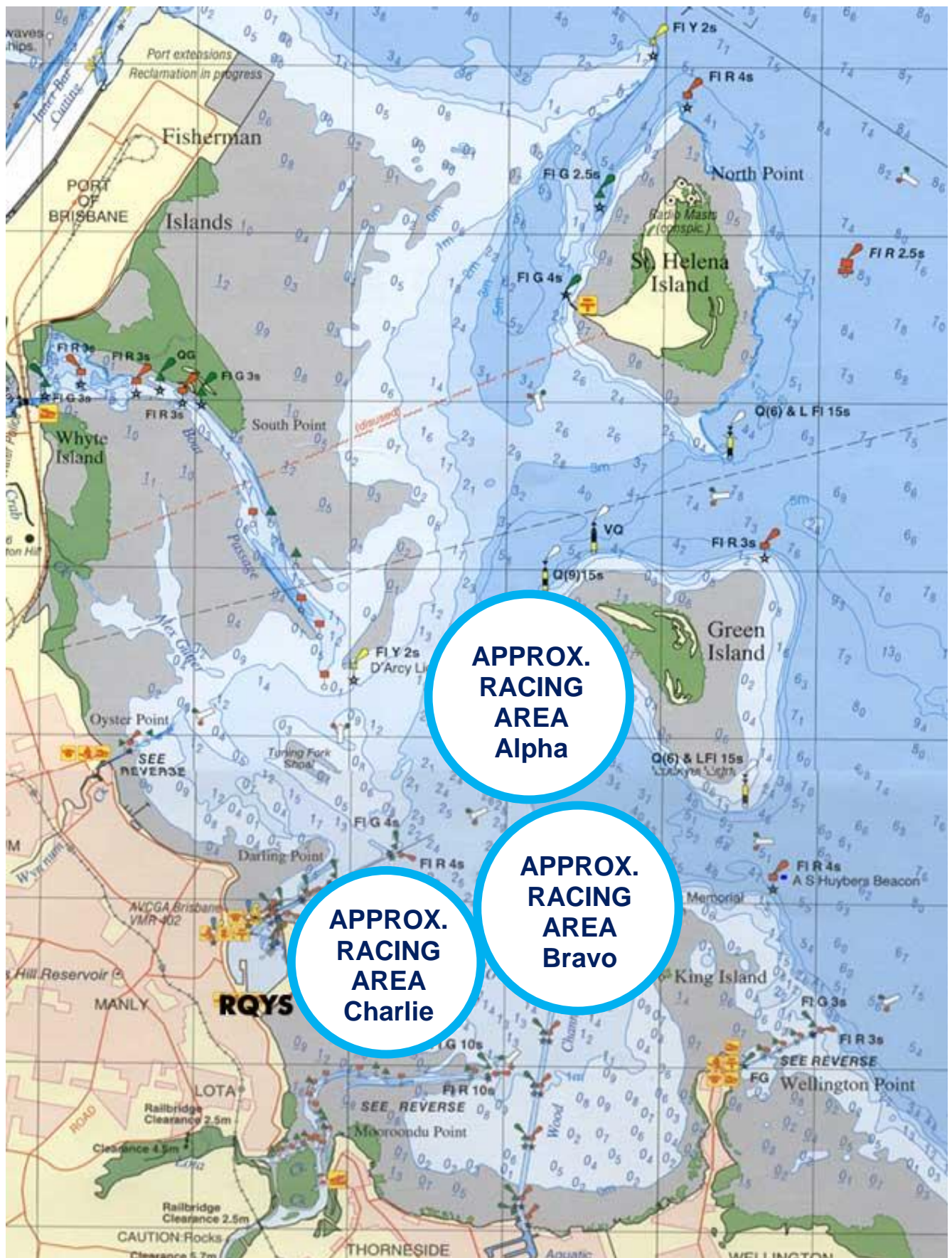
21. PRIZES

- 21.1 Prizes will be awarded to 1st, 2nd and 3rd in each class/division for which 5 or more entries are received.
- 21.2 Single-handed Junior classes (Charlie course) shall be awarded separate Male/Female podiums in each class.
- 21.3 In double-handed classes, podiums shall be awarded Overall with a separate 1st place awarded to the first opposite gendered skippered boat.
- 21.4 Other prizes may be awarded at the discretion of the Organising Authority.

22. FURTHER INFORMATION

- 22.1 For further information please contact:
RQYS Sailing: 07 3396 8666 / sailing@rqys.com.au
578 Royal Esplanade MANLY QLD 4179 AUS
www.rqys.com.au

NoR Attachment A – Approximate Racing Area



NoR Attachment B – Lawn Allocations



NoR Attachment C – Club Overview



NoR Attachment D – Windsurfing, Camping & Road Trailer lawns



NoR Attachment E – Location Information

EMERGENCY CONTACTS

Emergencies	000	
RQYS Sailing Manager	0424 101 732	
Royal Queensland Yacht Squadron	(07) 3396 8666	578 Royal Esplanade, Manly QLD
Manly Coast Guard	(07) 3396 5911	40 Trafalgar St, Manly QLD
Wynnum Police	(07) 3308 8100	82 Pine St, Wynnum QLD
Wynnum Fire & Rescue	(07) 3396 3297	2006 Wynnum Rd, Wynnum West
Brisbane Water Police	(07) 3895 0333	2 Howard Smith Dr, Port of Brisbane

Location, access & communication of Next of Kin Details

Sailing Office & SailSys Databases including information gathered from regatta registrations and/or indemnity forms.

Location of Nearest Emergency Medical Facilities

Redlands Hospital	(07) 3488 3111	21 Weippin St, Cleveland QLD
-------------------	----------------	------------------------------

Location of Nearest Medical Facilities

Wynnum Family Health Service	(07) 3893 0093	116 Edith St, Wynnum QLD
Doctors on Manly Road	(07) 3348 6111	12 Manly Rd, Manly QLD
Silky Oaks Medical Practice	(07) 3396 9855	218 Manly Rd, Manly QLD
Dental On Cambridge	(07) 3348 6661	4/99 Cambridge Parade, Manly QLD

LOCAL SERVICES

Sail Maker

North Sails

1/264 Tingal Rd, Wynnum QLD
3396 5822

Hood Sails

181 Wynnum Esplanade, Wynnum QLD
0419 799 958

Ullman Sails

112 Glenora St, Wynnum QLD
(07) 3348 7245

Chandlery

Muir Marine

453 Esplanade, Manly QLD
(07) 3396 9988

Road Tech Marine

20 Redland Bay Rd, Capalaba QLD
(07) 3914 9543

Boat Building / Repairs – Located at RQYS

JSA Marine

(07) 3348 5682

David Glenn Boat Building

0412 878 144

Physio

Manly Physiotherapy & Pilates

3/443 Esplanade, Manly QLD
(07) 3396 8137

Bounce Physio Birkdale

190 Birkdale Rd, Birkdale QLD
(07) 3822 2122

Pharmacy

Manly Village Pharmacy

9/222 Stratton Terrace, Manly QLD
(07) 3396 8999

Groceries

IGA Manly Village

Cnr Stratton Tce & Cambridge Parade
(07) 3396 1980

Woolworths Wynnum Central

145 Florence St, Wynnum QLD
(07) 3513 4416

Butcher

The Local Butcher

222 Stratton Terrace, Manly QLD
(07) 3396 2195

Bakery

Manly Bakery

222 Stratton Terrace, Manly QLD
(07) 3396 5688

Accommodation

[Manly Marine Cover Motel](#)

Located on the Grounds of RQYS
(07) 3348 1000

Limited Camping Facilities at RQYS

[Limited camping MAY be available](#)
(07) 3396 8666

[The Manly Hotel](#)

54 Cambridge Parade, Manly QLD
(07) 3249 5999

[Waterloo Bay Hotel](#)

75 Berrima St, Wynnum QLD
(07) 3893 2344

[Pelican's Nestle Inn](#)

149 Wynnum Esplanade, Wynnum QLD
(07) 3396 3214

[Wynnum Anchor Motel](#)

14 Adam St, Wynnum QLD
(07) 3396 3037

LOCAL WEATHER TIDE

Local Weather:

The RQYS Weather Station can be found at:

<https://www.rqys.com.au/weather-station/>

The Weather Station records from above the club Bay Lookout.

BOM: Radar: <http://www.bom.gov.au/products/IDR663.loop.shtml>

Marine Forecast:

<http://www.bom.gov.au/qld/forecasts/moreton-bay.shtml>

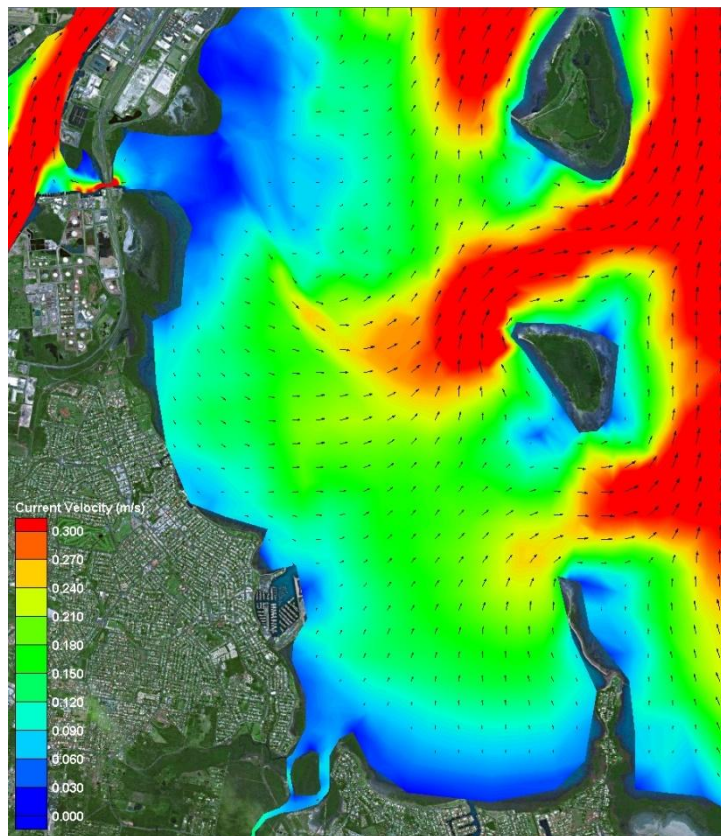
Other Popular forecasts:

Predict Wind: <https://forecast.predictwind.com/table/>

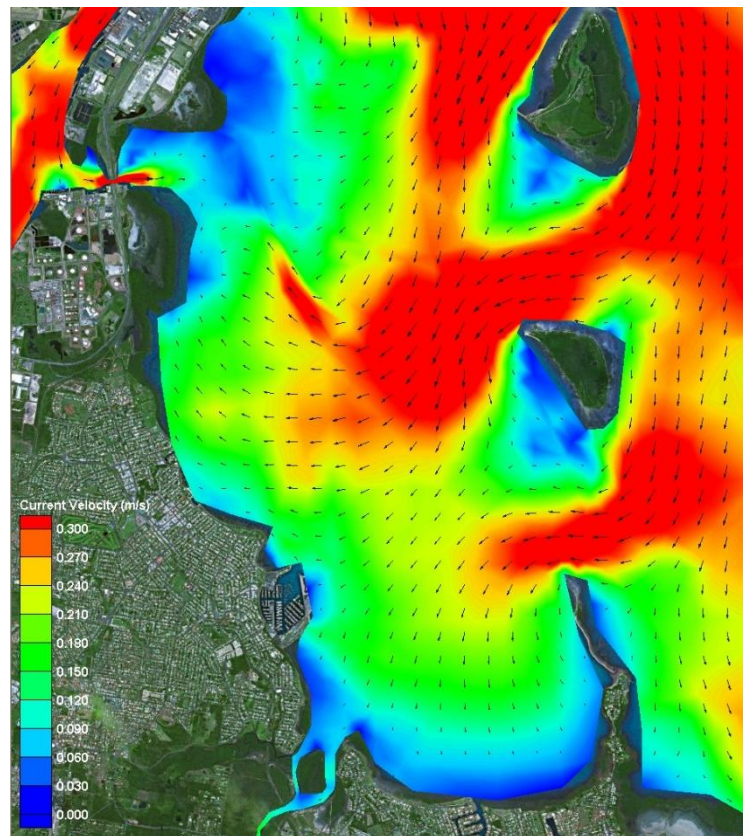
Seabreeze: <https://www.seabreeze.com.au/weather/wind-forecast/brisbane>

WillyWeather: <https://wind.willyweather.com.au/qld/brisbane/brisbane.html>

Waterloo Bay Ebb



Waterloo Bay Flood



ROYAL QUEENSLAND YACHT SQUADRON – THE SAILING GATEWAY TO MORETON BAY

