



# **OFF THE BEACH**

## **FROSTBITE SERIES**

# **NOTICE OF RACE**

## **(NoR)**

ORGANISING AUTHORITY

**ROYAL QUEENSLAND YACHT SQUADRON LTD**  
578 Royal Esplanade, Manly, QLD 4179

*The notation '[NP]' in a rule of the sailing instructions (SIs) means that a boat may not protest another boat for breaking that rule. This changes RRS 60.1.*

*The notation '[DP]' in a rule of the sailing instructions (SI's) means that a protest committee can award a penalty less than disqualification (including no penalty) at their discretion. This changes Rules 60.5 and 64.*

*The notation '[SP]' in a rule of the NoR and/or SIs means that a standard penalty may be applied by the race committee without a hearing per RRS60.5(b)(3).*

## **1. RULES**

- 1.1 The event is governed by the rules as defined in The Racing Rules of Sailing (RRS).
- 1.2 The Australian Sailing prescriptions and special regulations Part 2 apply.
- 1.3 For Etchells Class Boats NoR 1.2 is amended to AS Special Regulations Part 1 Category 7 shall apply.
- 1.4 Where there is a difference between the Notice of Race (NoR) and the Sailing Instructions (SI) the SI take precedence.
- 1.5 RRS Appendix P may apply.
- 1.6 RRS Appendix T (Arbitration) shall apply.
- 1.7 RRS 90.3(e) (Time Limit for changes to race scores) shall apply.
  - 1.7 (a) Scoring Enquiry can be made at the RQYS Sailing office or online at [https://www.racingrulesofsailing.org/scoring\\_inquiries/new?event\\_id=10744](https://www.racingrulesofsailing.org/scoring_inquiries/new?event_id=10744)

## **2. CODE OF CONDUCT**

- 2.1 [DP] Competitors and support persons shall comply with reasonable requests from race officials.
- 2.2 [DP] Competitors and support persons shall handle any equipment by the organizing authority with care, seamanship, in accordance with any instructions for its use and without interfering with its functionality.
- 2.3 Competitors must follow RQYS Club Policies (<https://www.rqys.com.au/membership/rules-and-regulations/> )

## **3. CHANGES TO RACE DOCUMENTS & SCHEDULE**

- 3.1 Any change to the race documents will be posted before 0900 on the day it will take effect, except that any change to the schedule of races will be posted by 2000 on the day before it will take effect.

## **4. SAILING INSTRUCTIONS**

- 4.1 The Sailing Instructions will be available after 1600 on 07<sup>th</sup> May 2025 at <https://www.rqys.com.au/otb-frostbite-series-2025/>.

## **5. COMMUNICATION**

- 5.1 The online official notice board is located at <https://www.rqys.com.au/otb-frostbite-series-2025/>.
- 5.2 Secondary to the Official noticeboard "instant messaging" system WhatsApp may be used to notify skippers of timely information, confirmation of days course, Protest Time limit etc. you may join the group at: <https://chat.whatsapp.com/Dlxhcv8kclKBLxoQTEstPq>
- 5.3 The race office is located at The RQYS Sailing Office located adjacent to the Main Rigging Lawn, telephone 3396 8666, email [sailing@rqys.com.au](mailto:sailing@rqys.com.au) .
- 5.4 [DP] While racing, except in an emergency, a boat shall not make voice or data transmissions and shall not receive voice or data communication that is not available to all boats.

## **6. ELIGIBILITY AND ENTRY**

- 6.1 Series entry is open to Dinghies, Boards, OTB Multihulls, VX One and Etchells owned by financial members of the Royal Queensland Yacht Squadron in the appropriate category.
- 6.2 Casual Entries can be lodged in advance online or, can be lodged on the day of racing before first warning signal of the day, by seeing the Sailing Office on the deck adjacent to the Main Rigging Lawn.
- 6.3 Casual entrants are required to be a member of Australian Sailing by having a club membership with a yacht or sailing club, or by obtaining an [RQYS Day Pass / Sail Pass](#).
- 6.4 All entrants including skippers and crew must be a member of Australian Sailing (AS) at both the time of entry and for the duration of the event. Check your AS Membership Number here: <https://www.sailing.org.au/member-finder/> .
- 6.5 Class course allocations shall be as follows:
- 6.5 (a) Northern Course**
- 29er
  - 49er
  - Etchells
  - Hobie 16
  - Mixed Catamarans
  - Nacra 15
  - Skiffs
  - VX One
- 6.5 (b) Southern Course**
- Finns
  - Flying 11
  - ILCA 4
  - ILCA 6
  - ILCA 7
  - OK Dinghy
  - Optimist
  - Raceboard
  - RS 200
  - RS Feva
  - Windsurfer LT
- 6.6 Class with fewer than five (5) entries shall race in the mixed class division of that course.
- 6.7 Boats may enter the event by registering online at <https://www.rqys.com.au/otb-frostbite-series-2025/>.
- 6.8 To be considered an entry in the event, a boat shall complete all registration requirements and pay all fees.
- 6.9 Late entries will be accepted at the discretion of the Organising Authority.

## **7. FEES**

- 7.1 Entry fees are as follows:
- 7.1 (a) \$100 Series entry (RQYS members only)
- 7.1 (b) \$25 Casual entry – RQYS Member
- 7.1 (c) \$30 Casual entry – Non RQYS Member
- 7.2 Any Refunds will be as per the RQYS Sailing Refunds Policies (<https://www.rqys.com.au/membership/rules-and-regulations/>).

## 8. SCHEDULE

8.1

DATE	EVENT	FIRST WARNING SIGNAL or TIME
<a href="#">Per the RQYS Sailing Calendar</a>	Northern Course	Not Before 1300 Hours
	Southern Course	Not Before 1330 Hours

8.2 There will be a maximum of two (2) races per day.

8.3 No warning signal will be made after 1530 hrs.

## 9. EQUIPMENT INSPECTION

9.1 Boats may be inspected at any time for compliance with the class rules and Sailing Instructions.

9.2 On the water, a boat can be instructed by a race committee equipment inspector, safety auditor or measurer to proceed immediately to a designated area for inspection.

## 10. VENUE

10.1 NoR Attachment A shows the location of the racing areas.

10.2 NoR Attachment B shows the plan of the event venue.

## 11. COURSES

11.1 The courses shall be as described in the Sailing Instructions.

## 12. PENALTY SYSTEM

12.1 For the skiffs and multihulls, RRS 44.1 is changed so that the Two-Turn Penalty is replaced by a One-Turn Penalty.

12.2 For Etchells and VX One, RRS 44.1 is amended in that the penalty for breaking a rule of RRS Part 2 shall be a One-Turn Penalty, except the penalty for breaking a rule of RRS Part 2 occurring within the zone as defined in RRS shall be a Two-Turn Penalty.

## 13. SCORING

13.1 Rule A5.3 applies as amended by NoR 13.5.

13.2 Three (3) races are required to be completed to constitute a series.

13.3 (a) When fewer than four (4) races have been completed, a boat's series score will be the total of her race scores.

13.3 (b) When from four (4) to six (6) races have been completed, a boat's series score will be the total of her race scores excluding her worst score.

13.3 (c) When from seven (7) or more races have been completed, a boat's series score will be the total of her race scores excluding her two worst score.

13.4 Average Points:

13.4 (a) Average points may be requested for season entries when racing is missed due to competing at a National or International class regatta or a World Sailing ranked event in the competitor's class, or in any other circumstance approved by the Sailing Committee.

13.4 (b) These points shall be awarded for no more than two (2) days in the series.

13.4 (c) To receive average points, sailors must request average points in advance by emailing [sailing@rqys.com.au](mailto:sailing@rqys.com.au) with a "Request for Average Points" form or [submitting the online request form](#) and have this approved by the Sailing Committee BEFORE the missed day's racing.

13.4 (d) Average Points will be awarded as per RRS A9 (a).

13.5 A boat which Does Not Compete (DNC) in a race shall be scored the number competitors within the fleet at the starting area, plus an additional three (3) points. This changes RRS A5.3.

13.6 Mixed Fleets shall be scored on yardstick per the [Australian Sailing Yardsticks](#).

#### **14. CHARTERED OR LOANED BOATS**

- 14.1 A chartered or loaned boat may carry national letters or a sail number in contravention of her class rules, provided that the race committee has approved her sail identification before the first race.

#### **15. DATA PROTECTION**

- 15.1 By participating in an event, a competitor automatically grants to the Organising Authority and the sponsors of the event, the right in perpetuity, to make, use and show, from time to time and at their discretion, any motion pictures, still pictures and live, taped or film television and other reproductions of him/her during the period of the competition for said event in which the competitor participated and in all material related to the said event without compensation.

#### **16. RISK STATEMENT**

- 16.1 RRS 3 states: 'The responsibility for a boat's decision to participate in a race or to continue to race is hers alone.' By participating in this event each competitor agrees and acknowledges that sailing is a potentially dangerous activity with inherent risks. These risks include strong winds and rough seas, sudden changes in weather, failure of equipment, boat handling errors, poor seamanship by other boats, loss of balance on an unstable platform and fatigue resulting in increased risk of injury. **Inherent in the sport of sailing is the risk of permanent, catastrophic injury or death by drowning, trauma, hypothermia or other causes.**
- 16.2 All participants are required to comply with any safety provisions as mandated under the Racing Rules of Sailing, the Australian Sailing Special Regulations Part 2 for Off The Beach Boats, and any Class Rules that may apply. The Squadron encourages and supports competitors who believe it is appropriate to exceed the above requirements (such as the wearing of helmets, body armour, impact vests, etc.) if they or their guardian believe that conditions and their personal circumstances warrant. All competitor's attention is drawn to the Risk Statement - Section 16 of the Notice of Race.

#### **17. INSURANCE**

- 17.1 Each participating boat shall be insured with valid third-party liability insurance with a minimum cover of \$10,000,000AUD per incident or the equivalent.

#### **18. PRIZES**

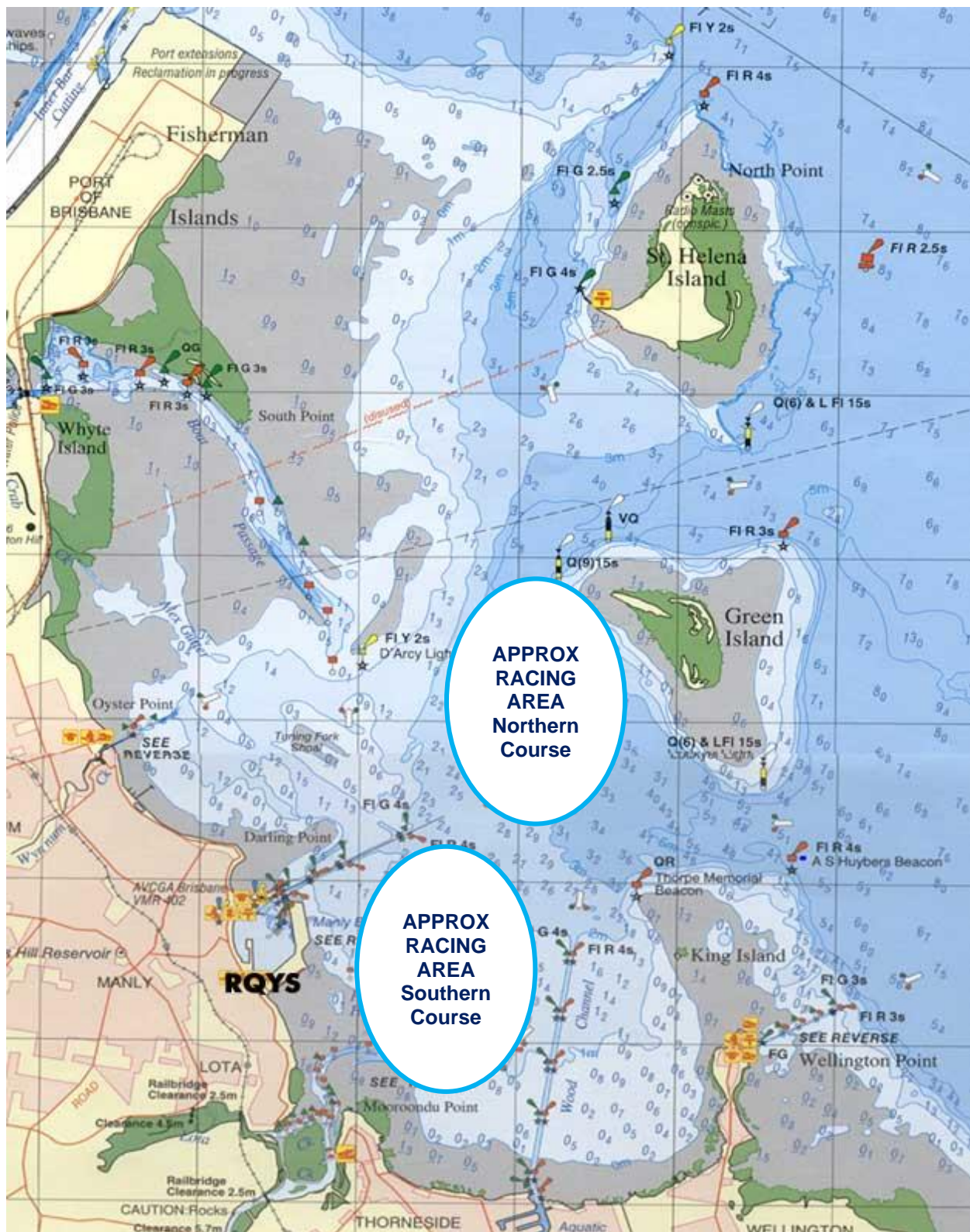
- 18.1 Prizes will be awarded to:
- 18.1 (a) 1<sup>st</sup>, 2<sup>nd</sup> and 3<sup>rd</sup> scratch in each single class/division for which 5 or more entries are received.
- 18.1 (b) 1<sup>st</sup>, 2<sup>nd</sup> and 3<sup>rd</sup> yardstick in each mixed class/division for which 5 or more entries are received.
- 18.2 Other prizes may be awarded at the discretion of the Organising Authority

#### **19. FURTHER INFORMATION**

- 19.1 For further information please contact:  
RQYS Sailing: 07 3396 8666 / [sailing@rqys.com.au](mailto:sailing@rqys.com.au)  
578 Royal Esplanade MANLY QLD 4179 AUS  
[www.rqys.com.au](http://www.rqys.com.au)



# NoR Attachment A – Approximate Racing Area



# NoR Attachment B – Location Information

## EMERGENCY CONTACTS

Emergencies	000	
RQYS Sailing Manager	0424 101 732	
Royal Queensland Yacht Squadron	(07) 3396 8666	578 Royal Esplanade, Manly QLD
Manly Coast Guard	(07) 3396 5911	40 Trafalgar St, Manly QLD
Wynnum Police	(07) 3308 8100	82 Pine St, Wynnum QLD
Wynnum Fire & Rescue	(07) 3396 3297	2006 Wynnum Rd, Wynnum West
Brisbane Water Police	(07) 3895 0333	2 Howard Smith Dr, Port of Brisbane

### Location, access & communication of Next of Kin Details

Sailing Office & SailSys Databases including information gathered from regatta registrations and/or indemnity forms.

### Location of Nearest Emergency Medical Facilities

Redlands Hospital	(07) 3488 3111	21 Weippin St, Cleveland QLD
-------------------	----------------	------------------------------

### Location of Nearest Medical Facilities

Wynnum Family Health Service	(07) 3893 0093	116 Edith St, Wynnum QLD
Doctors on Manly Road	(07) 3348 6111	12 Manly Rd, Manly QLD
Silky Oaks Medical Practice	(07) 3396 9855	218 Manly Rd, Manly QLD
Dental On Cambridge	(07) 3348 6661	4/99 Cambridge Parade, Manly QLD

## LOCAL SERVICES

### Sail Maker

#### North Sails

1/264 Tingal Rd, Wynnum QLD  
3396 5822

#### Hood Sails

181 Wynnum Esplanade, Wynnum QLD  
0419 799 958

#### Ullman Sails

112 Glenora St, Wynnum QLD  
(07) 3348 7245

### Chandlery

#### Muir Marine

453 Esplanade, Manly QLD  
(07) 3396 9988

#### Road Tech Marine

20 Redland Bay Rd, Capalaba QLD  
(07) 3914 9543

### Boat Building / Repairs – Located at RQYS

#### JSA Marine

(07) 3348 5682

#### David Glenn Boat Building

0412 878 144

### Physio

#### Manly Physiotherapy & Pilates

3/443 Esplanade, Manly QLD  
(07) 3396 8137

#### Bounce Physio Birkdale

190 Birkdale Rd, Birkdale QLD  
(07) 3822 2122

### Pharmacy

#### Manly Village Pharmacy

9/222 Stratton Terrace, Manly QLD  
(07) 3396 8999

### Groceries

#### IGA Manly Village

Cnr Stratton Tce & Cambridge Parade  
(07) 3396 1980

#### Woolworths Wynnum Central

145 Florence St, Wynnum QLD  
(07) 3513 4416

### Butcher

#### The Local Butcher

222 Stratton Terrace, Manly QLD  
(07) 3396 2195

### Bakery

#### Manly Bakery

222 Stratton Terrace, Manly QLD  
(07) 3396 5688

### Accommodation

#### [Manly Marine Cover Motel](#)

Located on the Grounds of RQYS  
(07) 3348 1000

#### Limited Camping Facilities at RQYS

[Limited camping MAY be available](#)  
(07) 3396 8666

#### [The Manly Hotel](#)

54 Cambridge Parade, Manly QLD  
(07) 3249 5999

#### [Waterloo Bay Hotel](#)

75 Berrima St, Wynnum QLD  
(07) 3893 2344

#### [Pelican's Nestle Inn](#)

149 Wynnum Esplanade, Wynnum QLD  
(07) 3396 3214

#### [Wynnum Anchor Motel](#)

14 Adam St, Wynnum QLD  
(07) 3396 3037



## LOCAL WEATHER TIDE

Local Weather:

The RQYS Weather Station can be found at:

<https://www.rqys.com.au/weather-station/>

The Weather Station records from above the club Bay Lookout.

BOM: Radar: <http://www.bom.gov.au/products/IDR663.loop.shtml>

Marine Forecast:

<http://www.bom.gov.au/qld/forecasts/moreton-bay.shtml>

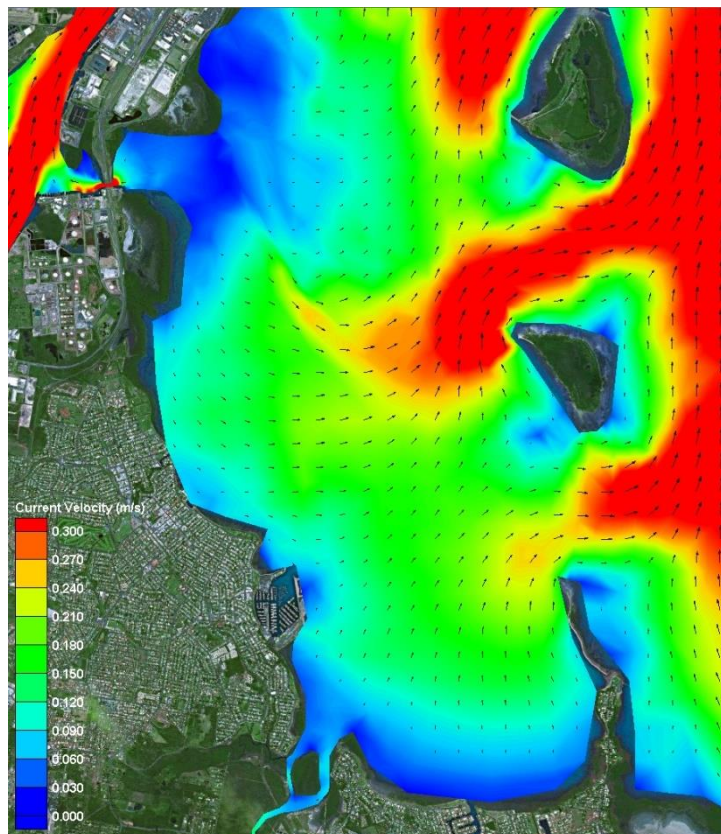
Other Popular forecasts:

Predict Wind: <https://forecast.predictwind.com/table/>

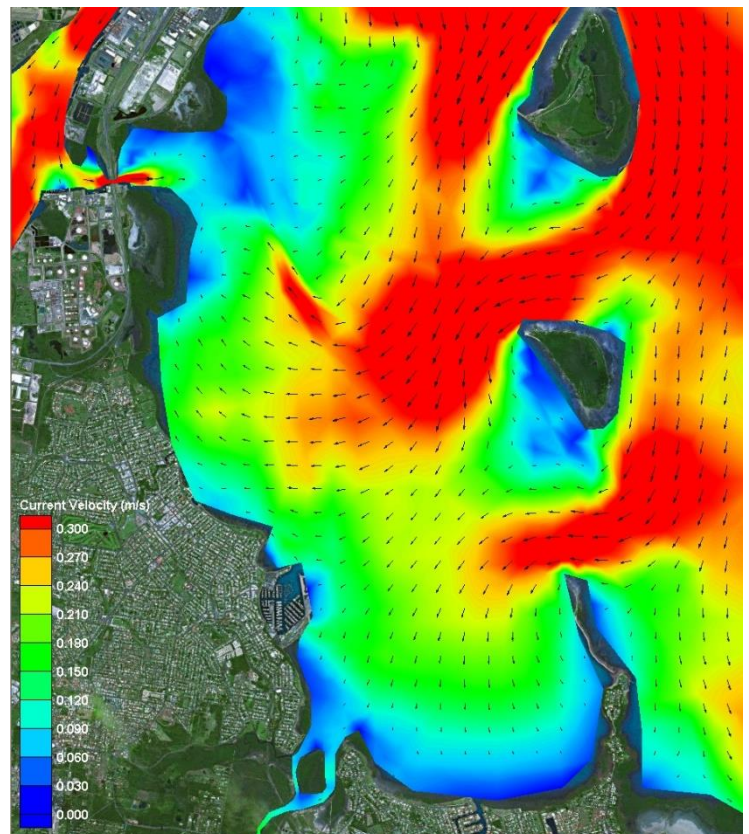
Seabreeze: <https://www.seabreeze.com.au/weather/wind-forecast/brisbane>

WillyWeather: <https://wind.willyweather.com.au/qld/brisbane/brisbane.html>

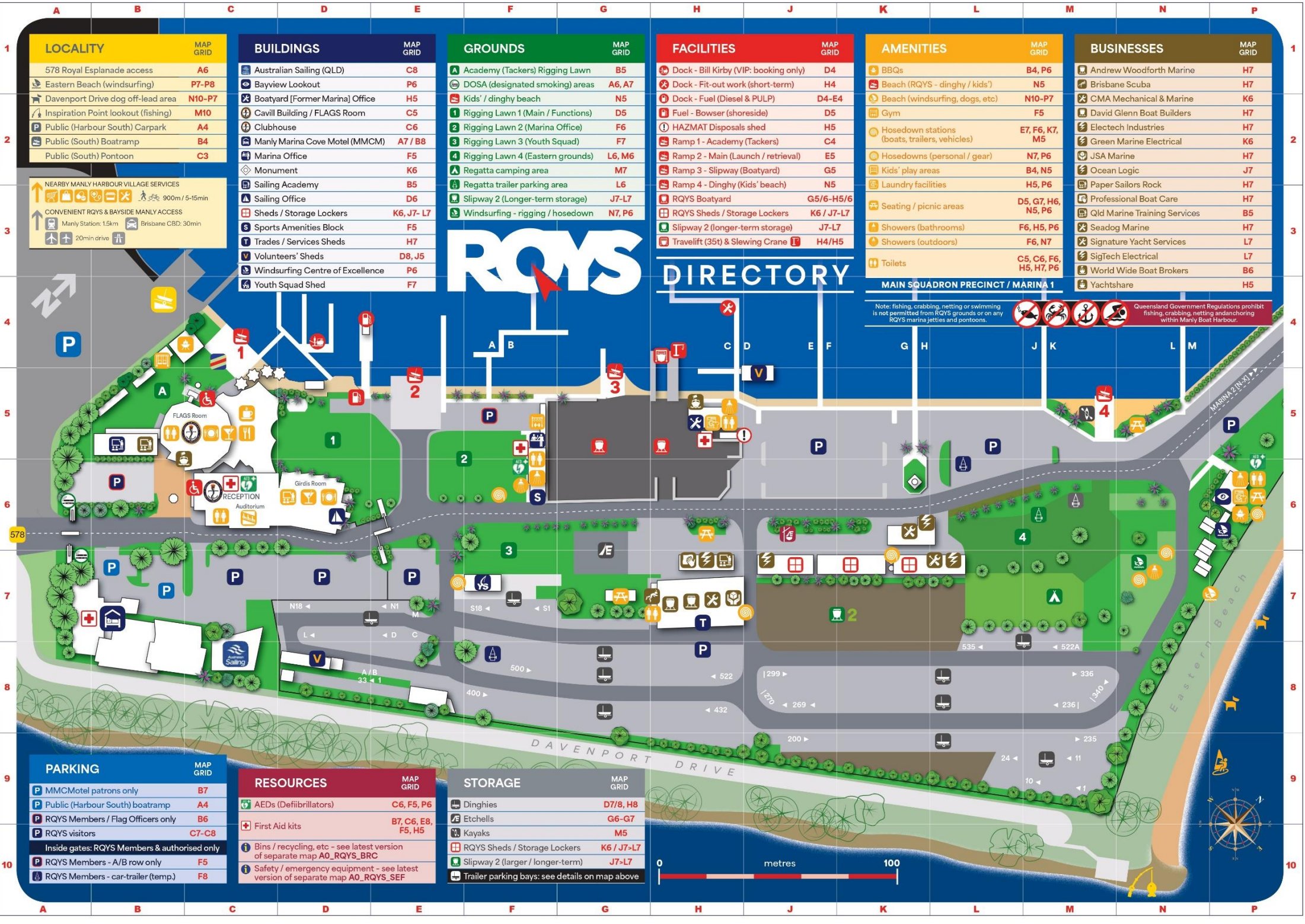
**Waterloo Bay Ebb**



**Waterloo Bay Flood**







LOCALITY		MAP GRID
578 Royal Esplanade access		A6
Eastern Beach (windsurfing)		P7-P8
Davenport Drive dog off-lead area		N10-P7
Inspiration Point lookout (fishing)		M10
Public (Harbour South) Carpark		A4
Public (South) Boatramp		B4
Public (South) Pontoon		C3

NEARBY MANLY HARBOUR VILLAGE SERVICES

900m / 5-15min

CONVENIENT RQYS & BAYSIDE MANLY ACCESS

Manly Station: 15km

Brisbane CBD: 30min

20min drive

BUILDINGS		MAP GRID
Australian Sailing (QLD)		C8
Bayview Lookout		P6
Boatyard [Former Marina] Office		H5
Cavill Building / FLAGS Room		C5
Clubhouse		C6
Manly Marina Cove Motel (MMCM)		A7 / B8
Marina Office		F5
Monument		K6
Sailing Academy		B5
Sailing Office		D6
Sheds / Storage Lockers		K6, J7- L7
Sports Amenities Block		F5
Trades / Services Sheds		H7
Volunteers' Sheds		D8, J5
Windsurfing Centre of Excellence		P6
Youth Squad Shed		F7

GROUNDS		MAP GRID
Academy (Tackers) Rigging Lawn		B5
DOSA (designated smoking) areas		A6, A7
Kids' / dinghy beach		N5
Rigging Lawn 1 (Main / Functions)		D5
Rigging Lawn 2 (Marina Office)		F6
Rigging Lawn 3 (Youth Squad)		F7
Rigging Lawn 4 (Eastern grounds)		L6, M6
Regatta camping area		M7
Regatta trailer parking area		L6
Slipway 2 (Longer-term storage)		J7-L7
Windsurfing - rigging / hosedown		N7, P6

FACILITIES		MAP GRID
Dock - Bill Kirby (VIP: booking only)		D4
Dock - Fit-out work (short-term)		H4
Dock - Fuel (Diesel & PULP)		D4-E4
Fuel - Bowser (shoreside)		D5
HAZMAT Disposals shed		H5
Ramp 1 - Academy (Tackers)		C4
Ramp 2 - Main (Launch / retrieval)		E5
Ramp 3 - Slipway (Boatyard)		G5
Ramp 4 - Dinghy (Kids' beach)		N5
RQYS Boatyard		G5/6-H5/6
RQYS Sheds / Storage Lockers		K6 / J7-L7
Slipway 2 (longer-term storage)		J7-L7
Travelift (35t) & Slewing Crane		H4/H5

AMENITIES		MAP GRID
BBQs		B4, P6
Beach (RQYS - dinghy / kids')		N5
Beach (windsurfing, dogs, etc)		N10-P7
Gym		F5
Hosedown stations (boats, trailers, vehicles)		E7, F6, K7, M5
Hosedowns (personal / gear)		N7, P6
Kids' play areas		B4, N5
Laundry facilities		H5, P6
Seating / picnic areas		D5, G7, H6, N5, P6
Showers (bathrooms)		F6, H5, P6
Showers (outdoors)		F6, N7
Toilets		C5, C6, F6, H5, H7, P6

BUSINESSES		MAP GRID
Andrew Woodforth Marine		H7
Brisbane Scuba		H7
CMA Mechanical & Marine		K6
David Glenn Boat Builders		H7
Electech Industries		H7
Green Marine Electrical		K6
JSA Marine		H7
Ocean Logic		J7
Paper Sailors Rock		H7
Professional Boat Care		H7
Qld Marine Training Services		B5
Seadog Marine		H7
Signature Yacht Services		L7
SigTech Electrical		L7
World Wide Boat Brokers		B6
Yachtshare		H5

# RQYS

## DIRECTORY

MAIN SQUADRON PRECINCT / MARINA 1

Note: fishing, crabbing, netting or swimming is not permitted from RQYS grounds or on any RQYS marina jetties and pontoons.

Queensland Government Regulations prohibit fishing, crabbing, netting and anchoring within Manly Boat Harbour.

PARKING		MAP GRID
MMCMotel patrons only		B7
Public (Harbour South) boatramp		A4
RQYS Members / Flag Officers only		B6
RQYS visitors		C7-C8
Inside gates: RQYS Members & authorised only		
RQYS Members - A/B row only		F5
RQYS Members - car-trailer (temp.)		F8

RESOURCES		MAP GRID
AEDs (Defibrillators)		C6, F5, P6
First Aid kits		B7, C6, E8, F5, H5
Bins / recycling, etc - see latest version of separate map A0_RQYS_BRC		
Safety / emergency equipment - see latest version of separate map A0_RQYS_SEF		

STORAGE		MAP GRID
Dinghies		D7/8, H8
Etchells		G6-G7
Kayaks		M5
RQYS Sheds / Storage Lockers		K6 / J7-L7
Slipway 2 (larger / longer-term)		J7-L7
Trailer parking bays: see details on map above		





# ROYAL QUEENSLAND YACHT SQUADRON – THE SAILING GATEWAY TO MORETON BAY



Waterloo Bay



~ Founded 1885 ~

[rqys.com.au](http://rqys.com.au)

[/RQYS.Manly](https://www.facebook.com/RQYS.Manly)

[/royal\\_qld\\_yacht\\_squadron](https://www.instagram.com/royal_qld_yacht_squadron)

