



# Brisbane Etchells Fleet Championships 2025

22<sup>nd</sup> & 23<sup>rd</sup> March 2025

## NOTICE OF RACE (NoR)

ORGANISING AUTHORITY

**ROYAL QUEENSLAND YACHT SQUADRON LTD**  
578 Royal Esplanade, Manly, QLD 4179

In conjunction with the  
International Etchells Class Association Brisbane Fleet Inc.



*The notation '[NP]' in a rule of the sailing instructions (SIs) means that a boat may not protest another boat for breaking that rule. This changes RRS 60.1.*

*The notation '[DP]' in a rule of the sailing instructions (SI's) means that a protest committee can award a penalty less than disqualification (including no penalty) at their discretion. This changes Rules 60.5 and 64.*

*The notation '[SP]' in a rule of the NoR and/or SIs means that a standard penalty may be applied by the race committee without a hearing per RRS60.5(b)(3).*

## **1. RULES**

- 1.1 The regatta will be governed by the "rules" as defined in the current Racing Rules of Sailing (RRS), and the International Etchells Class Association Rules (IECA Rules).  
<https://sailing.org/documents/racingrules/index.php>.
- 1.2 The Organising Authority may require all participating boats to display the event Sponsor's advertising in accordance with World Sailing (WS) Advertising Code 4.1. No other advertising shall be displayed on competing yachts.
- 1.3 Bow numbers may be provided and fitted by the Organising Authority.
- 1.4 The International Etchells Association Class Rules and the Equipment Rules of Sailing Shall Apply.
- 1.5 The prescriptions of Australian Sailing (AS) apply.
- 1.6 The AS Special Regulations Part 1 Category 7 shall apply.
- 1.7 RRS Appendix T (Arbitration) will apply.
- 1.8 RRS 90.3(e) (Time Limit for changes to race scores) shall apply.
  - 1.8 (a) Scoring Enquiries may be completed at the RQYS Sailing Office or online at:  
<https://form.iotform.com/232208538874059>

## **2. CODE OF CONDUCT**

- 2.1 This event will be conducted in accordance with the Etchells Class Code of Conduct which is available on the IECA website  
([https://etchells.org/assets/documents/Code\\_of\\_Conduct\\_Approved\\_2023.07.25.pdf](https://etchells.org/assets/documents/Code_of_Conduct_Approved_2023.07.25.pdf) ). Competitors will be required to sign the Code of Conduct at or prior to registration for the event. Failure by a competitor to sign the Code of Conduct may result in the competitor being ineligible to participate in the event.
- 2.2 [DP] Competitors and support persons shall comply with reasonable requests from race officials.
- 2.3 Competitors must follow RQYS Club Policies (<https://www.rqys.com.au/membership/rules-and-regulations/> )

## **3. CHANGES TO RACE DOCUMENTS & SCHEDULE**

- 3.1 Any change to the race documents will be posted before 0900 on the day it will take effect, except that any change to the schedule of races will be posted by 2000 on the day before it will take effect.

## **4. SAILING INSTRUCTIONS**

- 4.1 The Sailing Instructions will be available after 1600 on 19<sup>th</sup> March 2025 at  
<https://www.rqys.com.au/brisbane-etchells-fleet-championships-2025/>.

## 5. COMMUNICATION

- 5.1 The online official notice board is located at <https://www.rqys.com.au/brisbane-etchells-fleet-championships-2025/> .
- 5.2 Secondary to the Official noticeboard “instant messaging” system WhatsApp may be used to notify skippers of timely information, confirmation of days course, Protest Time limit etc. join the group at <https://chat.whatsapp.com/BWgnoOwSs6gBAGF3DoYpJM>.
- 5.3 The race office is located at The RQYS Sailing Office located adjacent to the Main Rigging Lawn, telephone 3396 8666, email [sailing@rqys.com.au](mailto:sailing@rqys.com.au) .
- 5.4 [DP] All boats shall carry a VHF radio capable of communicating on the [VHF maritime mobile band](#).
- 5.5 On the water, the race committee will make courtesy broadcasts to competitors on VHF radio. The channel will be confirmed at the skippers meeting (Likely 72 or 77).
- 5.6 [DP] From the First Warning Signal of the day until racing has been concluded for the day, except in an emergency or to signal a race retirement, a boat shall not make voice or data transmissions and shall not receive voice or data communication that is not available to all boats. This includes the use of mobile/cell phones or any device capable of sending and/or receiving external electronic communication and/or connecting to the internet.

## 6. ELIGIBILITY

- 6.1 To be eligible to enter this regatta, all competitors are required to satisfy the requirements of a Category 1 WS Sailor Classification, both at registration and for the period of the regatta. This can be obtained online at <https://www.sailing.org/sailors/sailor-categorisations/>
- 6.2 This event is open to all boats of the Etchells Class. For clarity: boats originally built from Mould 11 that have completed the M11 Protocol of Modifications as approved by the IECA and World Sailing are eligible to race as Etchells, subject to compliance with the Etchells class rules as modified by this Notice of Race.
- 6.3 This Notice of Race changes the following **class rules**, as permitted by RRS 87. The changes are shown highlighted in red. Written permission of the IECA for the change has been posted on the official notice board.
- A.11.1 (m) A certificate for a boat originally built from Mould 11 that has completed the M11 Protocol of Modifications shall have a signed copy of the M11 Protocol of Modifications attached.
- C.7.1. (a) **Modification** of the external shape of the **hull** is not permitted in any way except as permitted in C.7.1.(b) to C.7.1.(i), or as permitted by the M11 Protocol of Modifications.
- D.2.1. (a) The hull shall be built in compliance with the **class rules** in force at the time of **initial certification**, or in compliance with the M11 Protocol of Modifications.
- (b) **Modifications** (Section C) shall comply with the current **class rules**. Modifications permitted by the M11 Protocol of Modifications are permitted.
- D.2.6 (a) The boat shall be constructed according to the International Etchells Plans and Building Specifications, or according to the M11 Protocol of Modifications.
- BS.B.1 (a) Moulds requiring approval, and their respective approval authority, are shown in Table 1. Approval shall be obtained before use for production.
- (c) Moulds and keel chills (moulds):
- (1) shall be constructed by builders approved for that purpose by WS and IECA
- (2) if required to be approved, shall be approved in accordance with World Sailing/IECA Mould Approval Procedures  
Boats built from Mould 11 and subsequently modified in accordance with the M11 Protocol of Modifications are deemed to have complied with BS.B.1.
- BS.C.3 **Modification** of the external shape of the hull and hull appendages is not permitted except for:
- (a) fairing of local imperfections inadvertently created in the moulding process, including trimming and fairing of the skeg and rudder mouldings
- (b) fairing of the keel/hull join, no more than 150 mm above and 100 mm below the join, following application of the glass tape layup for the join
- (c) fairing of the skeg/hull join

- (d) sanding
- (e) modifications in accordance with the M11 Protocol of Modifications

- 6.4 Each crew member of each boat will be weighed between 1600 and 1800 hours on Friday 21<sup>st</sup> March or 0800 and 0900 hours on Saturday 22<sup>nd</sup> March to ensure compliance with One Design Rule (OD Rule) C.2. Weigh-in will be in the Auditorium with-in the main club house.
- 6.5 Crews that fail to make the weight limit by the close of registration on Saturday 22<sup>nd</sup> March 2025 will be ineligible to compete in the event.
- 6.6 Any crew substitutes must be weighed before the first race of that day.
- 6.7 Crew substitutions will not be allowed for the purpose of complying with the weight limit.
- 6.8 Crews shall be weighed wearing light clothing, the minimum being outerwear shorts and t-shirt.
- 6.9 All helmsmen and crew shall be financial members of the International Etchells Class Association and shall conform to RRS 46 and RRS 75 **PLEASE NOTE: There is an On-Line payment system for Etchells Class Membership. Memberships must be paid for on-line prior to registration. Please go to the Member's area at [www.etchells.org.au](http://www.etchells.org.au) to pay your subscriptions.**

## 7. ENTRY

- 7.1 Boats may enter the event by registering online at <https://app.sailsys.com.au/club/25/entry/series/4382/pricing> by 21<sup>st</sup> March 2025.
- 7.2 To be considered an entry in the event, a boat shall complete all registration requirements and pay all fees.

## 8. FEES

- 8.1 Entries will be accompanied by the Entry Fee of \$300.
- 8.2 Late entries may be accepted at the discretion of the Organising Authority.
- 8.3 Any Refunds will be as per the RQYS Sailing Refunds Policies (<https://www.rqys.com.au/membership/rules-and-regulations/>).

## 9. ADVERTISING

- 9.1 Boats may be required to display advertising chosen and supplied by the organizing authority.

## 10. SCHEDULE

10.1

DATE	EVENT	FIRST WARNING SIGNAL or TIME
Friday 21 <sup>st</sup> March 2025	Registration	1600-1800 Hours
Saturday 22 <sup>nd</sup> March 2025	Registration	0800-1000 Hours
	Racing (3 Races)	Not Before 1200 Hours
Sunday 23 <sup>rd</sup> March 2025	Racing (3 Races)	Not Before 1100 Hours
	Presentation	1700 Hours

- 10.2 A maximum of six (6) races will be conducted.
- 10.3 One extra race per day may be sailed, provided that no class becomes more than one race ahead of schedule and the change is made according to NoR 3.1.
- 10.4 To alert boats that a race or sequence of races will begin soon, the orange starting line flag will be displayed with one sound at least five minutes before a warning signal is made.
- 10.5 On the last scheduled day of racing no warning signal will be made after 1500 hours.
- 10.6 Racing on Saturday (22/03/2025) will share a course with RQYS OTB Club Racing.

## **11. EQUIPMENT INSPECTION**

- 11.1 Eligible boats shall register with the Organising Authority at the Royal Queensland Yacht Squadron, 578 Royal Esplanade, Manly, QLD 4179 between 1600 and 1800 hours on Friday 21<sup>st</sup> March 2025 or 0800 and 1000 hours on Saturday 22<sup>nd</sup> March 2025.
- 11.2 Boats will not be measured for this event.
- 11.3 Five (5) stickers will be issued to each entrant for affixing to the sails to be used in this event. All sails must have a valid measurement stamp affixed and signed by a class measurer.
- 11.4 All registration formalities, including payment of all Class and event fees, crew weigh in and presentation of required certificates must be completed by 1000 hours on Saturday 22<sup>nd</sup> March 2025.

## **12. VENUE**

- 12.1 NoR Attachment A shows the location of the racing areas.
- 12.2 NoR Attachment B shows the plan of the event venue.

## **13. COURSES**

- 13.1 Courses will be windward/leeward as described in the Sailing Instructions.

## **14. PENALTY SYSTEM**

- 14.1 The penalty for breaking a rule of Part 2 shall be a One Turn Penalty except that for infringements occurring within the Zone as defined in the RRS the penalty shall be a Two Turns Penalty. This changes RRS 44.1 and 44.2.

## **15. SCORING**

- 15.1 The Low Point scoring system of the RRS Appendix A will apply.
- 15.2 Three (3) races are required to constitute a series.
- 15.3 Six (6) races are scheduled.
  - 15.3 (a) If three (3) races are completed, then all results will count. This amends A2.
  - 15.3 (b) If four (4) or more races are completed, then a boat's worst result will be dropped from the total score. This amends A2.

## **16. SUPPORT PERSON VESSELS**

- 16.1 Team leaders, coaches, other support personnel and support boats shall stay outside areas where boats are racing from the time of the warning signal until all boats have finished or the Race Committee signals a postponement, general recall or abandonment. Specific coach and support boat instructions will be stated in the Sailing Instructions.
- 16.2 Support boats must be registered with the Organising Authority and shall be marked with identifying numeral stickers, boats not already fitted with OA approved stickers may purchase stickers online or from the RQYS Sailing Office.
  - 16.2 (a) Support boat must register online at:  
<https://www.revolutionise.com.au/rqys/events/register/281770>
  - 16.2 (b) Stickers can be purchased during the above registration or separately at:  
<https://www.revolutionise.com.au/rqys/shop/7705>

## **17. CHARTERED OR LOANED BOATS**

- 17.1 A chartered or loaned boat may carry national letters or a sail number in contravention of her class rules, provided that the race committee has approved her sail identification before the first race.

## **18. BERTHING**

- 18.1 Restrictions may be placed on where vessels may be stored or rigged by the RQYS Sailing or Marina office.
- 18.2 Boats may only be stored on the RQYS rigging lawn for the duration of the regatta & 24hrs before/after the regatta, unless otherwise approved by the OA.
- 18.3 No tie down restraints may penetrate the ground deeper than 300mm due to lawn irrigation systems.

## **19. [DP] HAUL-OUT RESTRICTIONS**

- 19.1 All boats shall be afloat by 1000 hours on Saturday 22<sup>nd</sup> March 2025 and shall not be hauled out during the event except with and according to the terms of prior written permission of the race committee.

## **20. DIVING EQUIPMENT AND PLASTIC POOLS**

- 20.1 Underwater breathing apparatus and plastic pools or their equivalent shall not be used around competing yachts between the preparatory signal for the first race and the end of the regatta. Swimming to clean a boat's hull will not be permitted.

## **21. DATA PROTECTION**

- 21.1 By participating in an event, a competitor automatically grants to the Organising Authority and the sponsors of the event, the right in perpetuity, to make, use and show, from time to time and at their discretion, any motion pictures, still pictures and live, taped or film television and other reproductions of him/her during the period of the competition for said event in which the competitor participated and in all material related to the said event without compensation.

## **22. RISK STATEMENT**

- 22.1 RRS 3 states: 'The responsibility for a boat's decision to participate in a race or to continue to race is hers alone.' By participating in this event each competitor agrees and acknowledges that sailing is a potentially dangerous activity with inherent risks. These risks include strong winds and rough seas, sudden changes in weather, failure of equipment, boat handling errors, poor seamanship by other boats, loss of balance on an unstable platform and fatigue resulting in increased risk of injury. **Inherent in the sport of sailing is the risk of permanent, catastrophic injury or death by drowning, trauma, hypothermia or other causes.**
- 22.2 All participants are required to comply with any safety provisions as mandated under the Racing Rules of Sailing, the Australian Sailing Special Regulations Part 2 for Off The Beach Boats, and any Class Rules that may apply. The Squadron encourages and supports competitors who believe it is appropriate to exceed the above requirements (such as the wearing of helmets, body armour, impact vests, etc.) if they or their guardian believe that conditions and their personal circumstances warrant. All competitor's attention is drawn to the Risk Statement - Section 22 of the Notice of Race.

## **23. INSURANCE**

- 23.1 Each participating boat shall be insured with valid third-party liability insurance with a minimum cover of \$10,000,000AUD per incident or the equivalent.
- 23.2 Such insurance policy should also carry a "racing risk" extension.
- 23.3 All owners/competitors who sign the Entry Form are deemed to have made a declaration that they hold such cover. Competitors must produce evidence of such insurance at registration.
- 23.4 Each Skipper and/or co-skipper is liable for any third party property and personal injury claims.

## **24. PRIZES**

- 24.1 Prizes will be given as follows:
- 24.1 (a) The Brisbane Fleet Championships Perpetual Trophy will be awarded to the series scratch winner.
- 24.1 (b) 1<sup>st</sup>, 2<sup>nd</sup> & 3<sup>rd</sup> Place Scratch
- 24.1 (c) 1<sup>st</sup> Place Handicap
- 24.2 Other prizes may be awarded at the discretion of the Organising Authority

## **25. FURTHER INFORMATION**

### International Etchells Class Association Brisbane Fleet Inc.

Martin Sinclair (Fleet Captain) 0419 488 145 [mjsinclair@gmail.com](mailto:mjsinclair@gmail.com)

Helen Wood (Secretary) [hwood41@gmail.com](mailto:hwood41@gmail.com)

David Smith (Treasurer) [davidmarshallsmith@gmail.com](mailto:davidmarshallsmith@gmail.com)

Website: <https://etchellsbrisbane.com/>

### Royal Queensland Yacht Squadron

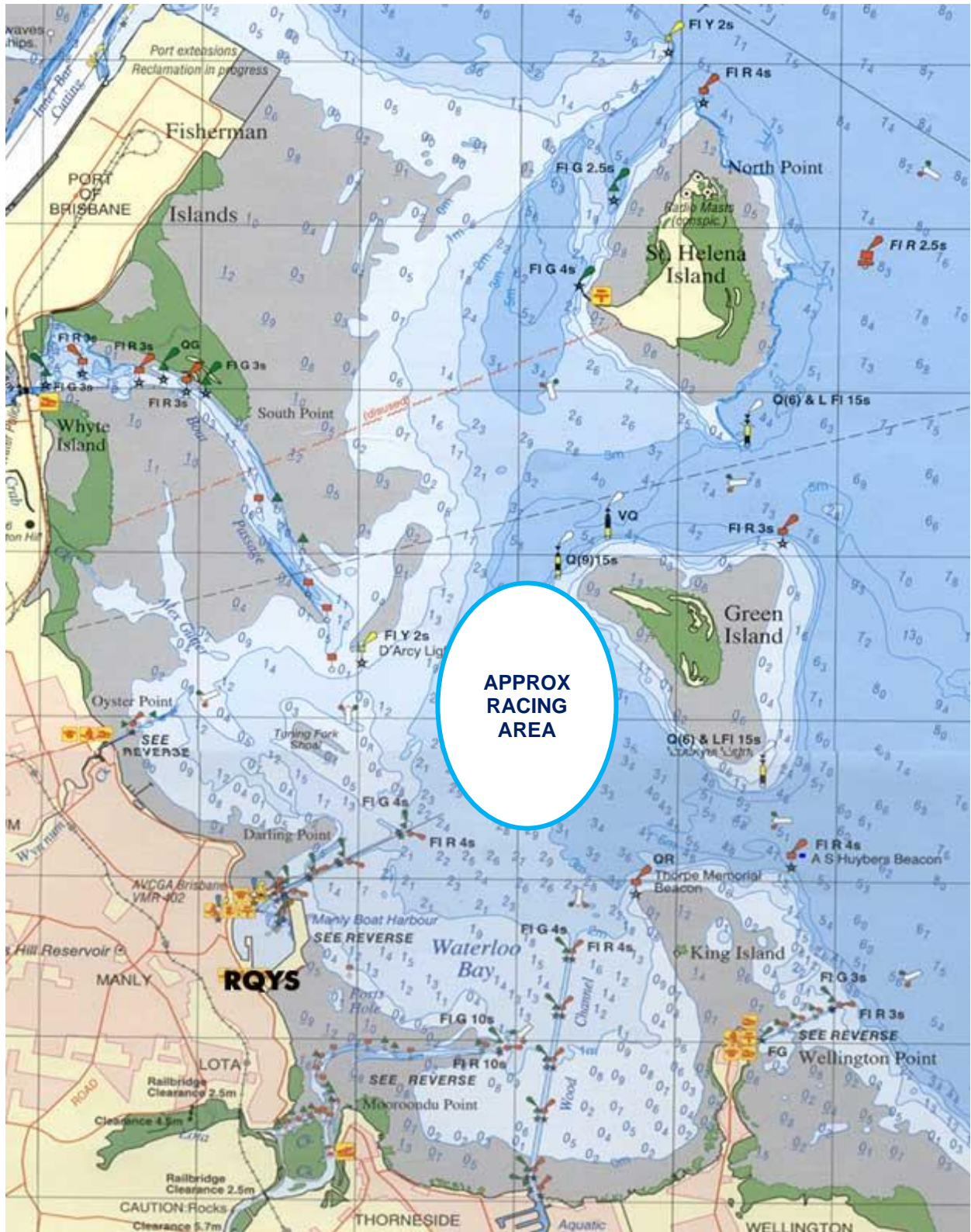
Austin Sims – Sailing Administrator 0404 900 546 [sailing@rqys.com.au](mailto:sailing@rqys.com.au)

Mark Dingley – Sailing Manager 0733 968 666 [sailingmanager@rqys.com.au](mailto:sailingmanager@rqys.com.au)

Website: [www.rqys.com.au](http://www.rqys.com.au)



# NoR Attachment A – Approximate Racing Area





# NoR Attachment B – Location Information

## EMERGENCY CONTACTS

---

Emergencies	000	
RQYS Sailing Manager	0424 101 732	
Royal Queensland Yacht Squadron	(07) 3396 8666	578 Royal Esplanade, Manly QLD
Manly Coast Guard	(07) 3396 5911	40 Trafalgar St, Manly QLD
Wynnum Police	(07) 3308 8100	82 Pine St, Wynnum QLD
Wynnum Fire & Rescue	(07) 3396 3297	2006 Wynnum Rd, Wynnum West
Brisbane Water Police	(07) 3895 0333	2 Howard Smith Dr, Port of Brisbane

### Location, access & communication of Next of Kin Details

Sailing Office & SailSys Databases including information gathered from regatta registrations and/or indemnity forms.

### Location of Nearest Emergency Medical Facilities

Redlands Hospital	(07) 3488 3111	21 Weippin St, Cleveland QLD
-------------------	----------------	------------------------------

### Location of Nearest Medical Facilities

Wynnum Family Health Service	(07) 3893 0093	116 Edith St, Wynnum QLD
Doctors on Manly Road	(07) 3348 6111	12 Manly Rd, Manly QLD
Silky Oaks Medical Practice	(07) 3396 9855	218 Manly Rd, Manly QLD
Dental On Cambridge	(07) 3348 6661	4/99 Cambridge Parade, Manly QLD

## LOCAL SERVICES

### Sail Maker

#### North Sails

1/264 Tingal Rd, Wynnum QLD  
3396 5822

#### Hood Sails

181 Wynnum Esplanade, Wynnum QLD  
0419 799 958

#### Ullman Sails

112 Glenora St, Wynnum QLD  
(07) 3348 7245

### Chandlery

#### Muir Marine

453 Esplanade, Manly QLD  
(07) 3396 9988

#### Road Tech Marine

20 Redland Bay Rd, Capalaba QLD  
(07) 3914 9543

### Boat Building / Repairs – Located at RQYS

#### JSA Marine

(07) 3348 5682

#### David Glenn Boat Building

0412 878 144

### Physio

#### Manly Physiotherapy & Pilates

3/443 Esplanade, Manly QLD  
(07) 3396 8137

#### Bounce Physio Birkdale

190 Birkdale Rd, Birkdale QLD  
(07) 3822 2122

### Pharmacy

#### Manly Village Pharmacy

9/222 Stratton Terrace, Manly QLD  
(07) 3396 8999

### Groceries

#### IGA Manly Village

Cnr Stratton Tce & Cambridge Parade  
(07) 3396 1980

#### Woolworths Wynnum Central

145 Florence St, Wynnum QLD  
(07) 3513 4416

### Butcher

#### The Local Butcher

222 Stratton Terrace, Manly QLD  
(07) 3396 2195

### Bakery

#### Manly Bakery

222 Stratton Terrace, Manly QLD  
(07) 3396 5688

### Accommodation

#### [Manly Marine Cover Motel](#)

Located on the Grounds of RQYS  
(07) 3348 1000

#### Limited Camping Facilities at RQYS

[Limited camping MAY be available](#)  
(07) 3396 8666

#### [The Manly Hotel](#)

54 Cambridge Parade, Manly QLD  
(07) 3249 5999

#### [Waterloo Bay Hotel](#)

75 Berrima St, Wynnum QLD  
(07) 3893 2344

#### [Pelican's Nestle Inn](#)

149 Wynnum Esplanade, Wynnum QLD  
(07) 3396 3214

#### [Wynnum Anchor Motel](#)

14 Adam St, Wynnum QLD  
(07) 3396 3037

## LOCAL WEATHER TIDE

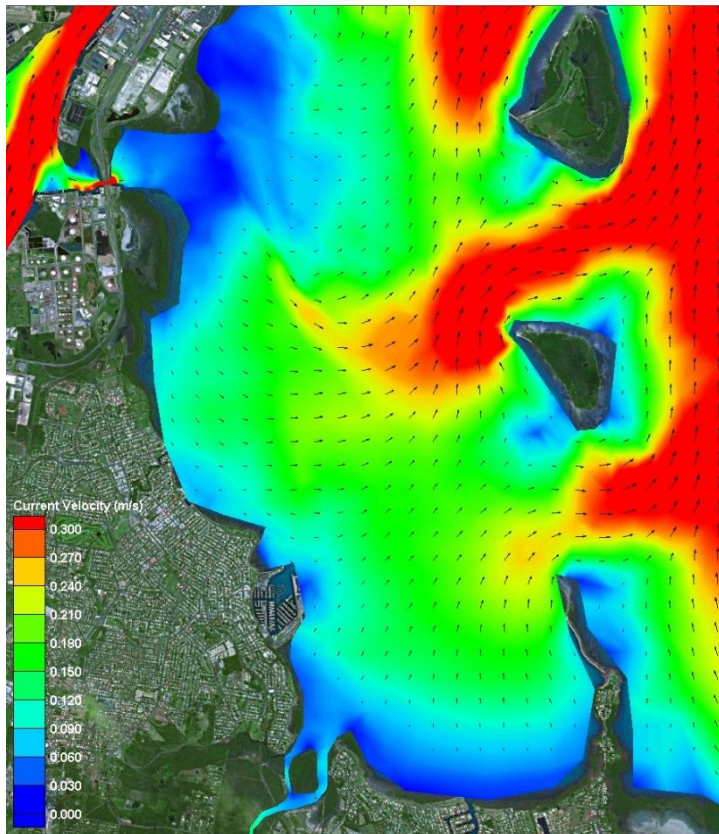
Local Weather: The RQYS Weather Station can be found at:  
<https://www.rqys.com.au/weather-station/>  
The Weather Station records from above the club Bay Lookout.

BOM: Radar: <http://www.bom.gov.au/products/IDR663.loop.shtml>  
Marine Forecast:  
<http://www.bom.gov.au/qld/forecasts/moreton-bay.shtml>

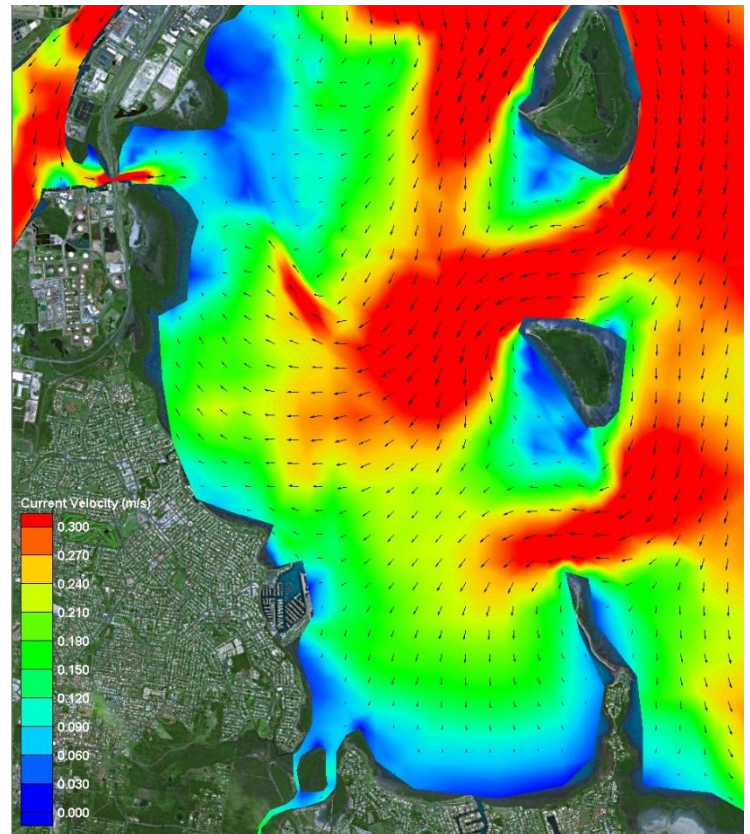
Other Popular forecasts:

Predict Wind: <https://forecast.predictwind.com/table/>  
Seabreeze: <https://www.seabreeze.com.au/weather/wind-forecast/brisbane>  
WillyWeather: <https://wind.willyweather.com.au/qld/brisbane/brisbane.html>

### Waterloo Bay Ebb



### Waterloo Bay Flood





LOCALITY		MAP GRID
578 Royal Esplanade access		A6
Eastern Beach (windsurfing)		P7-P8
Davenport Drive dog off-lead area		N10-P7
Inspiration Point lookout (fishing)		M10
Public (Harbour South) Carpark		A4
Public (South) Boatramp		B4
Public (South) Pontoon		C3

NEARBY MANLY HARBOUR VILLAGE SERVICES  
 900m / 5-15min  
 CONVENIENT RQYS & BAYSIDE MANLY ACCESS  
 Manly Station: 1.5km  
 Brisbane CBD: 30min  
 20min drive

BUILDINGS		MAP GRID
Australian Sailing (QLD)		C8
Bayview Lookout		P6
Boatyard [Former Marina] Office		H5
Cavill Building / FLAGS Room		C5
Clubhouse		C6
Manly Marina Cove Motel (MMCM)		A7 / B8
Marina Office		F5
Monument		K6
Sailing Academy		B5
Sailing Office		D6
Sheds / Storage Lockers		K6, J7- L7
Sports Amenities Block		F5
Trades / Services Sheds		H7
Volunteers' Sheds		D8, J5
Windsurfing Centre of Excellence		P6
Youth Squad Shed		F7

GROUNDS		MAP GRID
Academy (Tackers) Rigging Lawn		B5
DOSA (designated smoking) areas		A6, A7
Kids' / dinghy beach		N5
Rigging Lawn 1 (Main / Functions)		D5
Rigging Lawn 2 (Marina Office)		F6
Rigging Lawn 3 (Youth Squad)		F7
Rigging Lawn 4 (Eastern grounds)		L6, M6
Regatta camping area		M7
Regatta trailer parking area		L6
Slipway 2 (Longer-term storage)		J7-L7
Windsurfing - rigging / hosedown		N7, P6

FACILITIES		MAP GRID
Dock - Bill Kirby (VIP: booking only)		D4
Dock - Fit-out work (short-term)		H4
Dock - Fuel (Diesel & PULP)		D4-E4
Fuel - Bowser (shoreside)		D5
HAZMAT Disposals shed		H5
Ramp 1 - Academy (Tackers)		C4
Ramp 2 - Main (Launch / retrieval)		E5
Ramp 3 - Slipway (Boatyard)		G5
Ramp 4 - Dinghy (Kids' beach)		N5
RQYS Boatyard		G5/6-H5/6
RQYS Sheds / Storage Lockers		K6 / J7-L7
Slipway 2 (longer-term storage)		J7-L7
Travelift (35t) & Slewing Crane		H4/H5

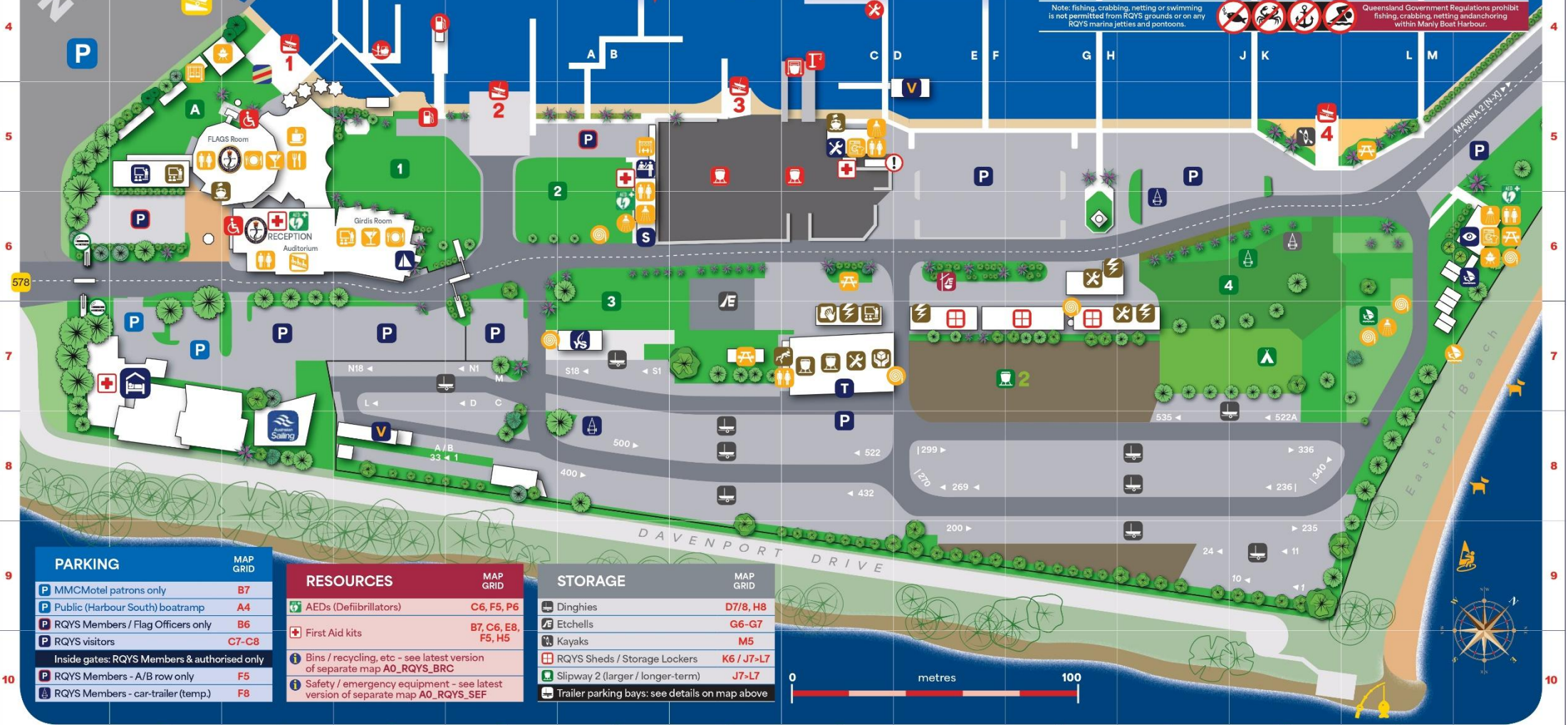
AMENITIES		MAP GRID
BBQs		B4, P6
Beach (RQYS - dinghy / kids')		N5
Beach (windsurfing, dogs, etc)		N10-P7
Gym		F5
Hosedown stations (boats, trailers, vehicles)		E7, F6, K7, M5
Hosedowns (personal / gear)		N7, P6
Kids' play areas		B4, N5
Laundry facilities		H5, P6
Seating / picnic areas		D5, G7, H6, N5, P6
Showers (bathrooms)		F6, H5, P6
Showers (outdoors)		F6, N7
Toilets		C5, C6, F6, H5, H7, P6

BUSINESSES		MAP GRID
Andrew Woodforth Marine		H7
Brisbane Scuba		H7
CMA Mechanical & Marine		K6
David Glenn Boat Builders		H7
Electech Industries		H7
Green Marine Electrical		K6
JSA Marine		H7
Ocean Logic		J7
Paper Sailors Rock		H7
Professional Boat Care		H7
Qld Marine Training Services		B5
Seadog Marine		H7
Signature Yacht Services		L7
SigTech Electrical		L7
World Wide Boat Brokers		B6
Yachtshare		H5

# RQYS DIRECTORY

Note: fishing, crabbing, netting or swimming is not permitted from RQYS grounds or on any RQYS marina jetties and pontoons.

Queensland Government Regulations prohibit fishing, crabbing, netting and anchoring within Manly Boat Harbour.



PARKING		MAP GRID
MMCMotel patrons only		B7
Public (Harbour South) boatramp		A4
RQYS Members / Flag Officers only		B6
RQYS visitors		C7-C8
Inside gates: RQYS Members & authorised only		
RQYS Members - A/B row only		F5
RQYS Members - car-trailer (temp.)		F8

RESOURCES		MAP GRID
AEDs (Defibrillators)		C6, F5, P6
First Aid kits		B7, C6, E8, F5, H5
Bins / recycling, etc - see latest version of separate map A0_RQYS_BRC		
Safety / emergency equipment - see latest version of separate map A0_RQYS_SEF		

STORAGE		MAP GRID
Dinghies		D7/8, H8
Etchells		G6-G7
Kayaks		M5
RQYS Sheds / Storage Lockers		K6 / J7>L7
Slipway 2 (larger / longer-term)		J7>L7
Trailer parking bays: see details on map above		



# ROYAL QUEENSLAND YACHT SQUADRON – THE SAILING GATEWAY TO MORETON BAY

Gold Coast

75km

Brisbane CBD

Sunshine Coast

100km



Waterloo Bay



~ Founded 1885 ~

[rqys.com.au](http://rqys.com.au)

[/RQYS.Manly](https://www.facebook.com/RQYS.Manly) [/royal\\_qld\\_yacht\\_squadron](https://www.instagram.com/royal_qld_yacht_squadron)

