

DAVID PEARCE
BAYSIDE
PROPERTY ~ AGENTS



BAYSIDE PROPERTY AGENTS

**INTERNATIONAL FINN 2025
AUSTRALIAN WINTER
CHAMPIONSHIPS**

18 - 20 July 2025

NOTICE OF RACE (NoR)

ORGANISING AUTHORITY

ROYAL QUEENSLAND YACHT SQUADRON LTD
578 Royal Esplanade, Manly, QLD 4179



The notation '[NP]' in a rule of the sailing instructions (SIs) means that a boat may not protest another boat for breaking that rule. This changes RRS 60.1.

The notation '[DP]' in a rule of the sailing instructions (SI's) means that a protest committee can award a penalty less than disqualification (including no penalty) at their discretion. This changes Rules 60.5 and 64.

1. RULES

- 1.1 The regatta shall be governed by the rules as defined in the current Racing Rules of Sailing (RRS).
- 1.2 Class rules shall apply.
- 1.3 Class Rule C.6.2 shall apply.
- 1.4 Amended RRS Appendix P shall apply.
- 1.5 Rule 44.1 and Appendix P2.1 is changed so that the Two-Turns Penalty is replaced by a One-Turn Penalty.
- 1.6 [NP]Bow Numbers will be supplied at registration, failure to fit bow numbers prior to racing will result in a vessel being non-compliant and will receive DNC for all races the bow number is not displayed.
 - 1.6 (a) Bow numbers should match your sail number and located no more than 300mm from the bow measured at deck level.
 - 1.6 (b) If there is a clash in sail number with an overseas entry the first letter of the country will prefix the sail number e.g. NZ12 = N12, BER9 = B9.
- 1.7 Where there is a difference between the Notice of Race (NoR) and the Sailing Instructions (SI) the SI take precedence.
- 1.8 RRS 90.3(e) shall apply (Time Limit for changes to race scores).

2. CODE OF CONDUCT

- 2.1 [DP] Competitors and support persons shall comply with reasonable requests from race officials.
- 2.2 [DP] Competitors and support persons shall handle any equipment or place advertising provided] by the organizing authority with care, seamanship, in accordance with any instructions for its use and without interfering with its functionality.
- 2.3 Competitors must follow RQYS Club Policies (<https://www.rqys.com.au/membership/rules-and-regulations/>)

3. CHANGES TO RACE DOCUMENTS & SCHEDULE

- 3.1 Any change to the race documents will be posted before 0900 on the day it will take effect, except that any change to the schedule of races will be posted by 2000 on the day before it will take effect.

4. SAILING INSTRUCTIONS

- 4.1 The Sailing Instructions will be available online after 1200 hrs on 16/07/2025 at <https://www.rqys.com.au/fwc25/>

5. ADVERTISING

- 5.1 Boats may be required to display advertising chosen and supplied by the Organising Authority.

6. COMMUNICATION

- 6.1 The online official notice board is located at <https://www.rqys.com.au/fwc25/>
- 6.2 Secondary to the Official noticeboard "instant messaging" system WhatsApp may be used to notify skippers of timely information, confirmation of days course, Protest Time limit etc. the group can be joined at: <https://chat.whatsapp.com/KAK92WAohjeKiA16cDbMKy>
- 6.3 [DP] While racing, except in an emergency, a boat shall not make voice or data transmissions and shall not receive voice or data communication that is not available to all boats.



7. ELIGIBILITY AND ENTRY

- 7.1 The regatta is open to boats from the International Finn Class.
- 7.2 Competitors must be financial members of an affiliated International Finn Association and of a club affiliated with their national MYA.
- 7.3 Eligible boats may enter online at <https://www.rqys.com.au/fwc25/>
- 7.4 To be considered an entry in the event, a boat shall complete all registration requirements and pay all fees.
- 7.5 Late entries may be accepted at the discretion of the Organising Authority.

8. FEES

- 8.1 The fees are as follows:
 - 8.1 (a) The standard regatta entry fee is AUD\$200.00 per boat up until 2359 hours on Monday 14th July 2025.
 - 8.1 (b) The standard regatta entry fee for competitors under 30 is \$50.00 AUD & \$100 AUD after Monday 14th July 2025.
 - 8.1 (c) The fee for entries received as of Tuesday 15th July 2025 shall be a further AUD\$50.00, totalling to AUD\$250.00.
- 8.2 Late entries shall be accepted until 2359 hours on Thursday 17th July 2025.
- 8.3 Any Refunds will be as per the RQYS Sailing Refunds Policies (<https://www.rqys.com.au/policiesanddocuments/>)

9. SCHEDULE

9.1

DATE	EVENT	FIRST WARNING SIGNAL or TIME
Friday 18 th July 2025	Competitor Briefing – Bill Kirby Jetty	0730 Hours
	Racing (2 Races)	Not Before 0900 Hours
Saturday 19 th July 2025	Racing (2 Races)	Not Before 0900 Hours
	World Famous Long Lunch Boardwalk Cafe	1300 Hours
Sunday 20 th July 2025	Racing (2 Races)	Not Before 0900 Hours
	Presentation in RQYS Girdis Room	After Racing

- 9.2 Six (6) races are scheduled for the Championship.
- 9.3 Two (2) races per day are planned back to back. Additional races may be sailed on any day provided that the regatta does not become more than one (1) race ahead of schedule. No more than three (3) races shall be sailed in one day.
- 9.4 No warning signal shall be made after 1300 hours on Sunday 21st July 2024.



10. MEASUREMENT AND REGISTRATION

- 10.1 Competitors may use one (1) mast and two (2) sails during the regatta, each of which must be declared at registration.
- 10.2 Competitors must have a sail number issued by IFAA, which either matches the number, allocated to the hull or the personal number of the skipper.
- 10.3 A boat or equipment may be inspected at any time for compliance with the Class Rules, Australian Sailing Special Regulations Part 2 and the Sailing Instructions. A boat can be instructed by the Race Committee to proceed immediately to a designated area for inspection.

11. VENUE AND RACING AREAS

- 11.1 NoR Attachment A shows the location of the racing areas.
- 11.2 NoR Attachment B shows the plan of the event venue.

12. THE COURSES

- 12.1 Windward - Leeward courses shall be sailed as described in the Sailing Instructions.
- 12.2 The target time for racing is intended to be 45 minutes.

13. CHANGE OF CREW AND EQUIPMENT

- 13.1 No changes to helmsman shall be accepted after the close of entries.
- 13.2 Substitution of damaged or lost equipment shall not be allowed unless authorized in writing by the Race Committee. Requests for substitution shall be made to the Race Committee in writing at the first reasonable opportunity and the damaged equipment and its replacement shall be submitted for inspection. This does not affect the masts and sails in NoR 10.1.

14. SCORING

- 14.1 Six (6) races are scheduled.
- 14.2 Three (3) races are required to be completed to constitute a series.
 - 14.2 (a) When four (4) or fewer races have been completed, a boat's series score shall be the total of her race scores.
 - 14.2 (b) When from five (5) to six (6) races have been completed, a boat's series score shall be the total of her race scores excluding her worst score.
- 14.3 All Division prizes shall be awarded based on the ranking of competitors in the overall results.

15. RUBBISH

- 15.1 No rubbish is to be dumped into the water. All rubbish is to be handed to official boats or taken ashore. Competitors must comply with RRS rule 47.

16. SUPPORT AND COACH BOATS

- 16.1 Each coach/support boat is required to have a working VHF radio, capable of communicating on the [VHF maritime mobile band](#), tuned into a frequency designated by the Race Committee and be available to act as a rescue boat as directed by the Race Committee if required.
- 16.2 Coach/Support Boats must be insured with third-party insurance for the value of \$10 million or more.



17. STORAGE/BERTHING

- 17.1 Restrictions may be placed on where vessels may be stored or rigged by the RQYS Sailing or Marina office.
- 17.2 Boats may only be stored on the RQYS rigging lawn for the duration of the regatta & 24hrs before/after the regatta, unless otherwise approved by the OA.
- 17.3 No tie down restraints may penetrate the ground deeper than 300mm due to lawn irrigation systems.

18. DATA PROTECTION

- 18.1 By participating in an event, a competitor automatically grants to the Organising Authority and the sponsors of the event, the right in perpetuity, to make, use and show, from time to time and at their discretion, any motion pictures, still pictures and live, taped or film television and other reproductions of him/her during the period of the competition for said event in which the competitor participated and in all material related to the said event without compensation.

19. RISK STATEMENT

- 19.1 RRS 3 states: 'The responsibility for a boat's decision to participate in a race or to continue to race is hers alone.' By participating in this event each competitor agrees and acknowledges that sailing is a potentially dangerous activity with inherent risks. These risks include strong winds and rough seas, sudden changes in weather, failure of equipment, boat handling errors, poor seamanship by other boats, loss of balance on an unstable platform and fatigue resulting in increased risk of injury. Inherent in the sport of sailing is the risk of permanent, catastrophic injury or death by drowning, trauma, hypothermia or other causes.
- 19.2 All participants are required to comply with any safety provisions as mandated under the Racing Rules of Sailing, the Australian Sailing Special Regulations Part 2 for Off The Beach Boats, and any Class Rules that may apply. The Squadron encourages and supports competitors who believe it is appropriate to exceed the above requirements (such as the wearing of helmets, body armour, impact vests, etc.) if they or their guardian believes that conditions and their personal circumstances warrant. All competitors' attention is drawn to the Risk Statement - Section 19 of the Notice of Race.

20. INSURANCE

- 20.1 Each participating boat shall be insured with valid third-party liability insurance with a minimum cover of \$10,000,000AUD per incident or the equivalent.

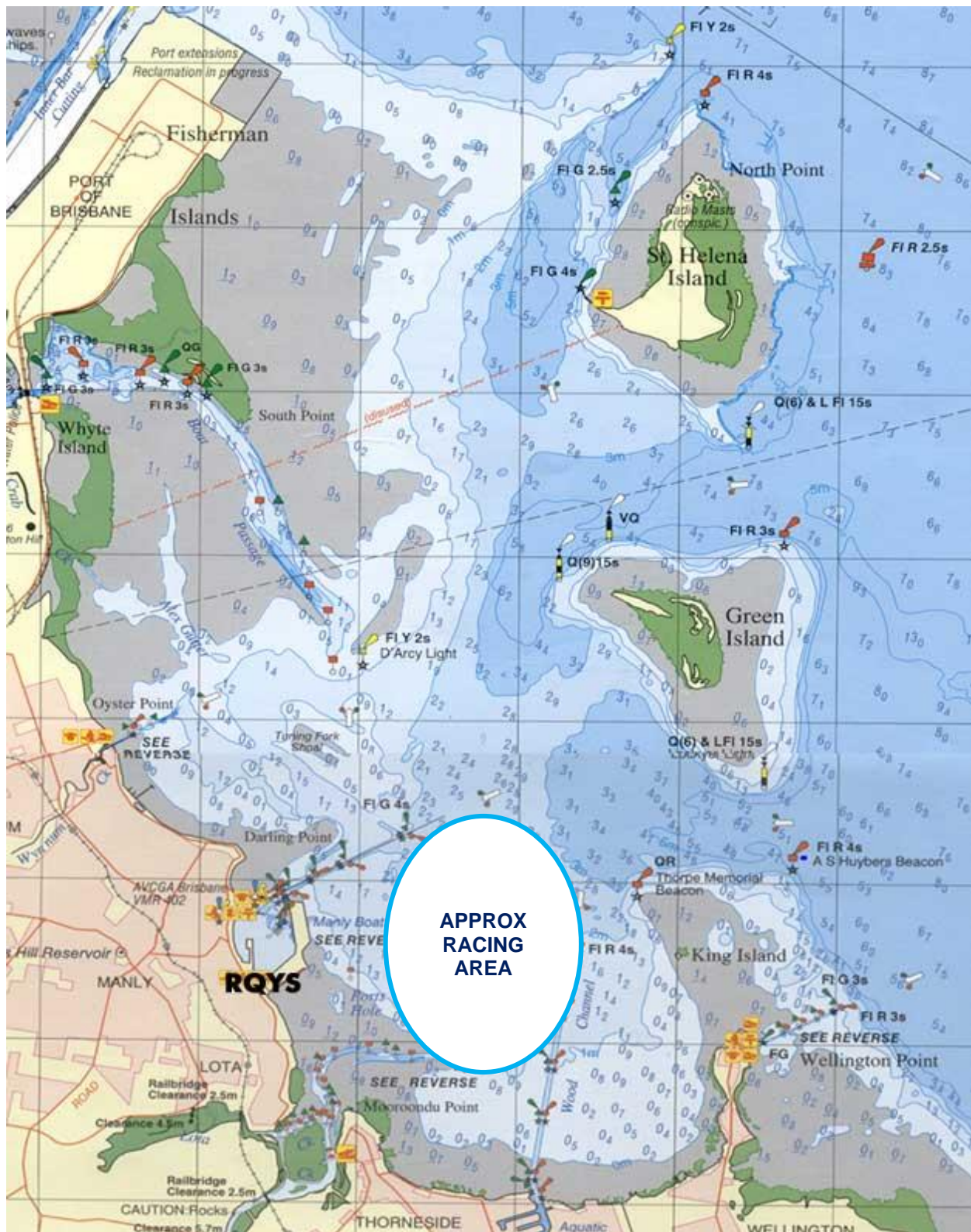
21. PRIZES

- 21.1 Prizes shall be awarded for 1st, 2nd and 3rd overall.
- 21.2 Other prizes may be awarded at the discretion of the Organising Authority.

22. FURTHER INFORMATION

- 22.1 For further information please contact:
RQYS Sailing: 07 3396 8666 / sailing@rqys.com.au
578 Royal Esplanade MANLY QLD 4179 AUS
www.rqys.com.au

NoR Attachment A – Approximate Racing Area



NoR Attachment B – Location Information

EMERGENCY CONTACTS

Emergencies	000	
RQYS Sailing Manager	0424 101 732	
Royal Queensland Yacht Squadron	(07) 3396 8666	578 Royal Esplanade, Manly QLD
Manly Coast Guard	(07) 3396 5911	40 Trafalgar St, Manly QLD
Wynnum Police	(07) 3308 8100	82 Pine St, Wynnum QLD
Wynnum Fire & Rescue	(07) 3396 3297	2006 Wynnum Rd, Wynnum West
Brisbane Water Police	(07) 3895 0333	2 Howard Smith Dr, Port of Brisbane

Location, access & communication of Next of Kin Details

Sailing Office & SailSys Databases including information gathered from regatta registrations and/or indemnity forms.

Location of Nearest Emergency Medical Facilities

Redlands Hospital	(07) 3488 3111	21 Weippin St, Cleveland QLD
-------------------	----------------	------------------------------

Location of Nearest Medical Facilities

Wynnum Family Health Service	(07) 3893 0093	116 Edith St, Wynnum QLD
Doctors on Manly Road	(07) 3348 6111	12 Manly Rd, Manly QLD
Silky Oaks Medical Practice	(07) 3396 9855	218 Manly Rd, Manly QLD
Dental On Cambridge	(07) 3348 6661	4/99 Cambridge Parade, Manly QLD

LOCAL SERVICES

Sail Maker

North Sails

1/264 Tingal Rd, Wynnum QLD
3396 5822

Hood Sails

181 Wynnum Esplanade, Wynnum QLD
0419 799 958

Ullman Sails

112 Glenora St, Wynnum QLD
(07) 3348 7245

Chandlery

Muir Marine

453 Esplanade, Manly QLD
(07) 3396 9988

Road Tech Marine

20 Redland Bay Rd, Capalaba QLD
(07) 3914 9543

Boat Building / Repairs – Located at RQYS

JSA Marine

(07) 3348 5682

David Glenn Boat Building

0412 878 144

Physio

Manly Physiotherapy & Pilates

3/443 Esplanade, Manly QLD
(07) 3396 8137

Bounce Physio Birkdale

190 Birkdale Rd, Birkdale QLD
(07) 3822 2122

Pharmacy

Manly Village Pharmacy

9/222 Stratton Terrace, Manly QLD
(07) 3396 8999

Groceries

IGA Manly Village

Cnr Stratton Tce & Cambridge Parade
(07) 3396 1980

Woolworths Wynnum Central

145 Florence St, Wynnum QLD
(07) 3513 4416

Butcher

The Local Butcher

222 Stratton Terrace, Manly QLD
(07) 3396 2195

Bakery

Manly Bakery

222 Stratton Terrace, Manly QLD
(07) 3396 5688

Accommodation

[Manly Marine Cover Motel](#)

Located on the Grounds of RQYS
(07) 3348 1000

Limited Camping Facilities at RQYS

[Limited camping MAY be available](#)
(07) 3396 8666

[The Manly Hotel](#)

54 Cambridge Parade, Manly QLD
(07) 3249 5999

[Waterloo Bay Hotel](#)

75 Berrima St, Wynnum QLD
(07) 3893 2344

[Pelican's Nestle Inn](#)

149 Wynnum Esplanade, Wynnum QLD
(07) 3396 3214

[Wynnum Anchor Motel](#)

14 Adam St, Wynnum QLD
(07) 3396 3037

LOCAL WEATHER TIDE

Local Weather:

The RQYS Weather Station can be found at:

<https://www.rqys.com.au/weather-station/>

The Weather Station records from above the club Bay Lookout.

BOM: Radar: <http://www.bom.gov.au/products/IDR663.loop.shtml>

Marine Forecast:

<http://www.bom.gov.au/qld/forecasts/moreton-bay.shtml>

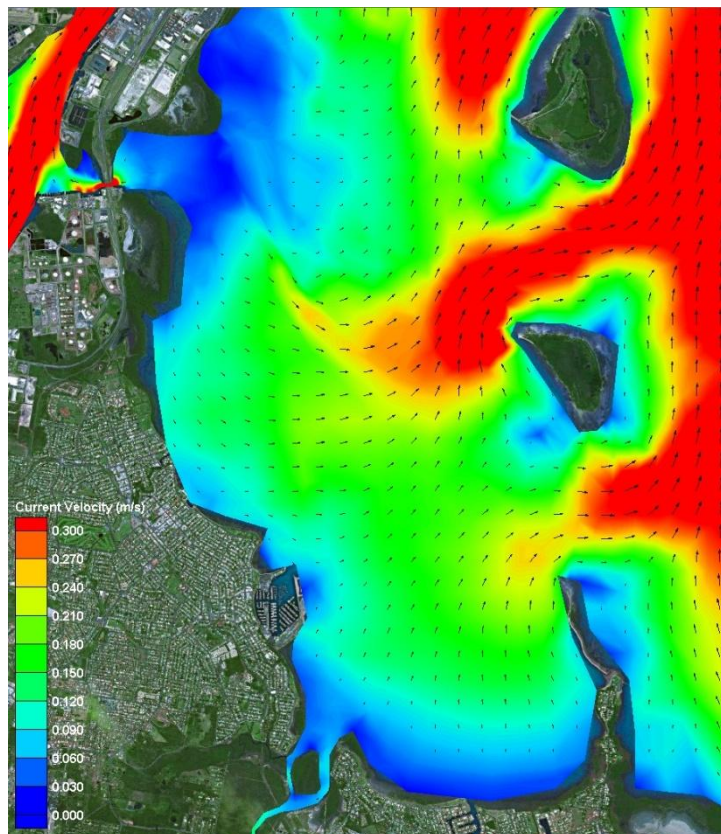
Other Popular forecasts:

Predict Wind: <https://forecast.predictwind.com/table/>

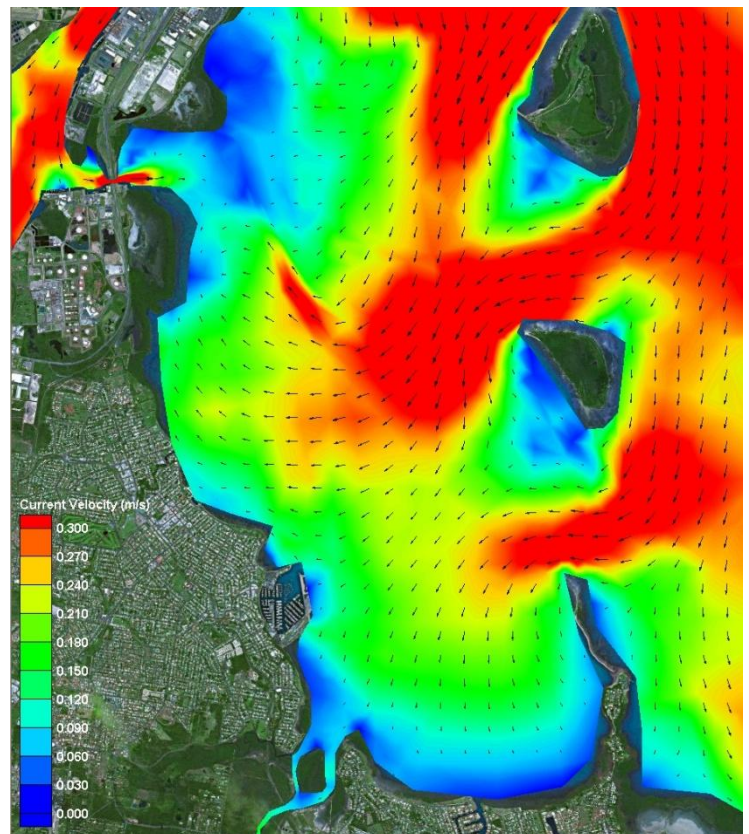
Seabreeze: <https://www.seabreeze.com.au/weather/wind-forecast/brisbane>

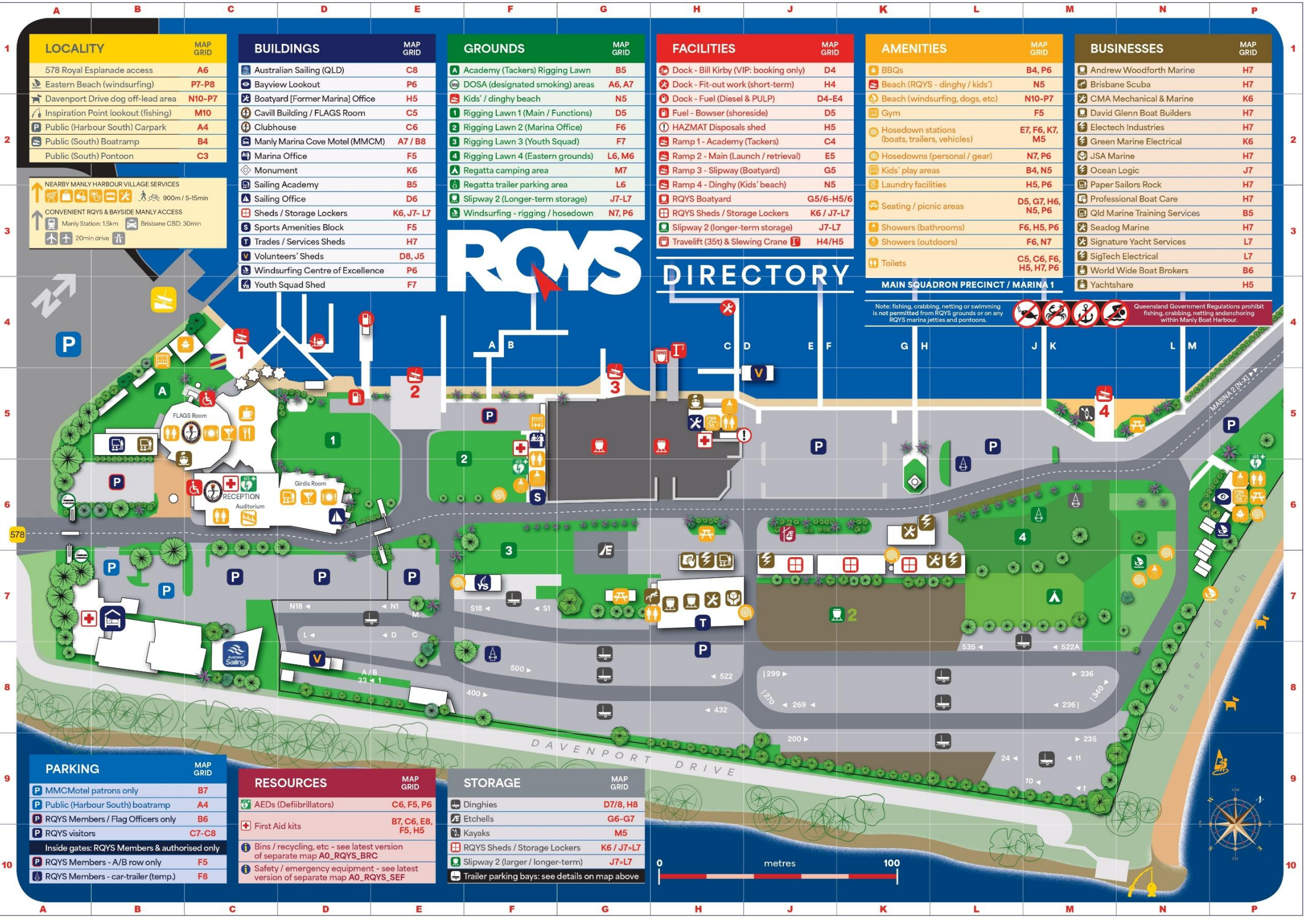
WillyWeather: <https://wind.willyweather.com.au/qld/brisbane/brisbane.html>

Waterloo Bay Ebb



Waterloo Bay Flood





LOCALITY		MAP GRID
578 Royal Esplanade access		A6
Eastern Beach (windsurfing)		P7-P8
Davenport Drive dog off-lead area		N10-P7
Inspiration Point lookout (fishing)		M10
Public (Harbour South) Carpark		A4
Public (South) Boatramp		B4
Public (South) Pontoon		C3

NEARBY MANLY HARBOUR VILLAGE SERVICES

900m / 5-15min

CONVENIENT RQYS & BAYSIDE MANLY ACCESS

Manly Station: 15km

Brisbane CBD: 30min

20min drive

BUILDINGS		MAP GRID
Australian Sailing (QLD)		C8
Bayview Lookout		P6
Boatyard [Former Marina] Office		H5
Cavill Building / FLAGS Room		C5
Clubhouse		C6
Manly Marina Cove Motel (MMCM)		A7 / B8
Marina Office		F5
Monument		K6
Sailing Academy		B5
Sailing Office		D6
Sheds / Storage Lockers		K6, J7- L7
Sports Amenities Block		F5
Trades / Services Sheds		H7
Volunteers' Sheds		D8, J5
Windsurfing Centre of Excellence		P6
Youth Squad Shed		F7

GROUNDS		MAP GRID
Academy (Tackers) Rigging Lawn		B5
DOSA (designated smoking) areas		A6, A7
Kids' / dinghy beach		N5
Rigging Lawn 1 (Main / Functions)		D5
Rigging Lawn 2 (Marina Office)		F6
Rigging Lawn 3 (Youth Squad)		F7
Rigging Lawn 4 (Eastern grounds)		L6, M6
Regatta camping area		M7
Regatta trailer parking area		L6
Slipway 2 (Longer-term storage)		J7-L7
Windsurfing - rigging / hosedown		N7, P6

FACILITIES		MAP GRID
Dock - Bill Kirby (VIP: booking only)		D4
Dock - Fit-out work (short-term)		H4
Dock - Fuel (Diesel & PULP)		D4-E4
Fuel - Bowser (shoreside)		D5
HAZMAT Disposals shed		H5
Ramp 1 - Academy (Tackers)		C4
Ramp 2 - Main (Launch / retrieval)		E5
Ramp 3 - Slipway (Boatyard)		G5
Ramp 4 - Dinghy (Kids' beach)		N5
RQYS Boatyard		G5/6-H5/6
RQYS Sheds / Storage Lockers		K6 / J7-L7
Slipway 2 (longer-term storage)		J7-L7
Travelift (35t) & Slewing Crane		H4/H5

AMENITIES		MAP GRID
BBQs		B4, P6
Beach (RQYS - dinghy / kids')		N5
Beach (windsurfing, dogs, etc)		N10-P7
Gym		F5
Hosedown stations (boats, trailers, vehicles)		E7, F6, K7, M5
Hosedowns (personal / gear)		N7, P6
Kids' play areas		B4, N5
Laundry facilities		H5, P6
Seating / picnic areas		D5, G7, H6, N5, P6
Showers (bathrooms)		F6, H5, P6
Showers (outdoors)		F6, N7
Toilets		C5, C6, F6, H5, H7, P6

BUSINESSES		MAP GRID
Andrew Woodforth Marine		H7
Brisbane Scuba		H7
CMA Mechanical & Marine		K6
David Glenn Boat Builders		H7
Electech Industries		H7
Green Marine Electrical		K6
JSA Marine		H7
Ocean Logic		J7
Paper Sailors Rock		H7
Professional Boat Care		H7
Qld Marine Training Services		B5
Seadog Marine		H7
Signature Yacht Services		L7
SigTech Electrical		L7
World Wide Boat Brokers		B6
Yachtshare		H5

RQYS DIRECTORY

MAIN SQUADRON PRECINCT / MARINA 1

Note: fishing, crabbing, netting or swimming is not permitted from RQYS grounds or on any RQYS marina jetties and pontoons.

Queensland Government Regulations prohibit fishing, crabbing, netting and anchoring within Manly Boat Harbour.

PARKING		MAP GRID
MMCMotel patrons only		B7
Public (Harbour South) boatramp		A4
RQYS Members / Flag Officers only		B6
RQYS visitors		C7-C8
Inside gates: RQYS Members & authorised only		
RQYS Members - A/B row only		F5
RQYS Members - car-trailer (temp.)		F8

RESOURCES		MAP GRID
AEDs (Defibrillators)		C6, F5, P6
First Aid kits		B7, C6, E8, F5, H5
Bins / recycling, etc - see latest version of separate map A0_RQYS_BRC		
Safety / emergency equipment - see latest version of separate map A0_RQYS_SEF		

STORAGE		MAP GRID
Dinghies		D7/8, H8
Etchells		G6-G7
Kayaks		M5
RQYS Sheds / Storage Lockers		K6 / J7-L7
Slipway 2 (larger / longer-term)		J7-L7
Trailer parking bays: see details on map above		



ROYAL QUEENSLAND YACHT SQUADRON – THE SAILING GATEWAY TO MORETON BAY



Waterloo Bay



~ Founded 1885 ~

rqys.com.au

[/RQYS.Manly](https://www.facebook.com/RQYS.Manly)

[/royal_qld_yacht_squadron](https://www.instagram.com/royal_qld_yacht_squadron)

