



18 Footers

Australian

Championships

18 – 20 January 2025

SAILING INSTRUCTIONS

(SI)

Including Amendment 1 &
Amendment 2

Organising Authority

ROYAL QUEENSLAND YACHT SQUADRON LTD

578 Royal Esplanade, Manly, QLD 4179

In conjunction with The Brisbane 18 Ft. Sailing Club Inc.

The notation '[NP]' in a rule of the sailing instructions (SIs) means that a boat may not protest another boat for breaking that rule. This changes RRS 60.1(a).

The notation '[DP]' in a rule of the sailing instructions (SI's) means that a protest committee can award a penalty less than disqualification (including no penalty) at their discretion. This changes Rules 60.5 and 64.

The notation '[SP]' in a rule of the NoR and/or SIs means that a standard penalty may be applied by the race committee without a hearing per RRS60.5(b)(3).

1. RULES

- 1.1. The event is governed by the rules as defined in the Racing Rules of Sailing (RRS) & The Australian 18 Foot Skiff Class Rules as amended at October 2024 (Version 3.08).
- 1.2. The Australian Sailing prescriptions and Special Regulations part 2 shall not apply.
- 1.3. RRS Appendix T – Arbitration will apply.
- 1.4. Penalty for infringement of a Rule of Part 2 will be a one **turn penalty** to include one tack and a gybe. If the penalty is incurred whilst sailing downwind with the spinnaker flying the penalty shall be taken before rounding the leeward mark, or if approaching the finishing line to finish, before crossing the finish (altering RRS 44).
- 1.5. Touching a mark (other than a starting or finish line mark) with any part of the boat or crew shall not constitute an infringement of the rules and does not require a One-Turn Penalty (this changes Rule 31 and 44.1). Manhandling a mark which results in an advantage is not allowed nor is displacing it and a boat doing so shall promptly retire. If a boat touches a start or finish mark they shall complete a One-Turn Penalty.
- 1.6. Each crew member must wear a personal safety knife attached to the trapeze harness. A knife must be attached on the rudder gantry for safety reasons.
- 1.7. Boats are required to have an identifying insignia on their sails.
- 1.8. Competitors must follow RQYS Club Policies (<https://www.rqys.com.au/membership/rules-and-regulations/>)

2. [DP][NP] LIFEJACKETS

- 2.1. For this event, each registered boat to carry an appropriate life jacket for each person on board. Each crew member shall be wearing a compliant PFD, or have one for each crew member stored on the boat from the time a boat launches until the time it returns to the rigging area (unless being utilized).
- 2.2. Life Jackets:
 - 2.2.1. Shall be approved to Australian Standard AS4758 (level 50N or higher).
 - 2.2.2. Shall be the correct size for the competitor,
 - 2.2.3. Shall be in good working order,
 - 2.2.4. Inflatable lifejackets must be serviced. Self-service is permitted if it meets the manufacturers servicing requirements.
 - 2.2.5. When worn for the entirety of a race, shall be the second outermost layer of equipment only to be exceeded by a trapeze harness.
 - 2.2.6. When stored onboard; one lifejacket will be stored on the port transom or gantry with another two to be stored on boat's deck in a fashion that allows quick and easy access.

3. CHANGES TO SAILING INSTRUCTIONS

- 3.1. Any change to the sailing instructions will be posted before 0900 on the day it will take effect, except that any change to the schedule of races will be posted by 2000 on the day before it will take effect.

4. COMMUNICATIONS WITH COMPETITORS

- 4.1. The online official notice board is located at <https://www.rqys.com.au/18ft-aus-champs-25/>
- 4.2. Secondary to the Official noticeboard “instant messaging” system WhatsApp may be used to notify skippers of timely information, confirmation of days course, Protest Time limit etc. Join the group at <https://chat.whatsapp.com/Krvkl3lxESZK8mJaCs2mQ9>
- 4.3 The race office is located at The RQYS Sailing Office located adjacent to the Main Rigging Lawn, telephone 3396 8666, email sailing@rqys.com.au .
- 4.4 [DP] While racing, except in an emergency, a boat shall not make voice or data transmissions and shall not receive voice or data communication that is not available to all boats.

5. CODE OF CONDUCT

- 5.1. [DP] Competitors and support persons shall comply with reasonable requests from race officials.
- 5.2. [DP] Competitors and support persons shall handle any equipment or place advertising provided by the organizing authority with care, seamanship, in accordance with any instructions for its use and without interfering with its functionality.

6. SIGNALS MADE ASHORE

- 6.1. Signals made ashore will be displayed at the official flag pole located at the top of the Eastern Gangway of the Bill Kirby Docks.
- 6.2. When flag AP is displayed ashore, ‘1 minute’ is replaced with ‘not less than 45 minutes’ in Race Signals AP.

7. SCHEDULE OF RACES

7.1.

| Date | Event | Time / Warning Signal |
|---------------------|---|------------------------------|
| Saturday 18/01/2025 | Registration on the eastern end of the club’s boardwalk area. | 0900hrs |
| | Competitors Briefing | 1030hrs |
| | First Warning 3 races | 1200hrs |
| Sunday 19/01/2025 | First Warning 2 races | 1300hrs |
| Monday 20/01/2025 | First Warning 2 races Presentation | 1100hrs ASAP after Racing |

- 7.2. The schedule may be changed to sail more than 2 races a day, when behind schedule or when conditions forecast for the following day indicate that races scheduled for that day may not be completed. However, no more than 3 races will be sailed in a day.
- 7.3. On the last scheduled day of racing no warning signal will be made after 1500hrs.

8. CLASS FLAGS

- 8.1. The Class flag is a red and blue pendant with the 18’ Skiff insignia.

9. RACING AREA

- 9.1. SI Attachment A shows the location of the racing area.
- 9.2. The racing area is defined as an area extending 100 Meters beyond the entire course in which a boat would normally sail while racing.

10. COURSES

- 10.1. The courses will be windward/leeward or Triangle Course.
- 10.2. SI Attachment B shows the courses, including the approximate angles between legs, the order in which marks are to be passed, and the side on which each mark is to be left.
- 10.3. No later than the warning signal, the race committee signal vessel will display the course to be sailed and the approximate compass bearing of the first leg.

11. MARKS

- 11.1. Marks are as described in SI Attachment B.

12. THE START

- 12.1. To alert boats that a race or sequence of races will begin soon, the orange starting line flags will be displayed with one sound signal at least 5 minutes before a warning signal is made.
- 12.2. Races will be started using either RRS 30.3 (U Flag Rule) or RRS 30.4 (Black Flag Rule) preparatory signal.
- 12.3. The starting line will be between a staff displaying an orange flag on the signal vessel at the starboard end and the course side of the Port end Start mark.
- 12.4. A boat that does not start within 10 minutes after her starting signal will be scored Did Not Start without a hearing. This changes RRS A5.1 and A5.2.

13. CHANGE OF THE NEXT LEG OF THE COURSE

- 13.1. To change the next windward leg of the course, the Race Committee will lay a change mark for the new position of the windward mark in accordance with RRS 33. When a new mark is laid, the original mark will be removed as soon as possible. When in a subsequent change a new windward mark is replaced, it will be replaced by the original mark. When mark 1 is changed the offset mark "1a" will be removed.
- 13.2. The Race Committee may shorten the course by displaying Code Flag 'S' with two sound signals. When the course is shortened, the finishing line is in accordance with RRS 32.2.

14. THE FINISH

- 14.1. The finishing line is between a staff displaying a blue flag on the finishing vessel at the port end and the course side of the starboard end finishing mark.

15. TIME LIMITS AND TARGET TIMES

- 15.1. The Race Target Time, Race Time Limit (see RRS 35), and the Finishing Window are shown in the table below.

| Race Target Time | Race Time Limit | Finishing Window |
|------------------|-----------------|------------------|
| 50 Minutes | 80 Minutes | 15 Minutes |

- 15.2. Failure to meet the Target Time will not be grounds for redress. This changes RRS 61.4(b)(1).

16. HEARING REQUESTS

- 16.1 The protest time limit is 60 minutes after the last boat finishes the last race of the day or the race committee signals no more racing today, whichever is later. The time will be posted on the official notice board.
- 16.2 Hearing requests forms and scoring enquiries forms are available from the Race Office at the RQYS Sailing Office.
- 16.3 The Jury/protest committee will hear protests, if possible, in the order of receipt and as soon as possible, after protest time limit.
- 16.4 Notices will be posted no later than 15 minutes after the protest time limit to inform competitors of hearings in which they are parties or named as witnesses. Hearings will be held at a time and place advised on the hearing notice.
- 16.5 Request to reopen a hearing on the last day shall be lodged within 15 minutes after the protest decisions have been posted or the end of protest time, whichever is the later (altering RRS 63.7(b)).

17. SCORING

- 17.1. The Low-Point scoring system, RRS Appendix A will apply.
- 17.2. 3 races are required to be completed to constitute a series.
- 17.3. The number of races scheduled is maximum 7 races.
 - 17.3.1. When fewer than 5 races have been completed, a boat's series score is the total of her race scores.
 - 17.3.2. When from 5 or more races have been completed, a boat's series score is the total of her race scores excluding her worst score.

18. [DP][NP][SP] SAFETY REGULATIONS

- 18.1. [SP] All skippers shall SIGN ON before racing each day and SIGN OFF at the earliest possible time after the completion of racing (but not later than the end of protest time). The sign on will be available near the Sailing Office & Rigging Lawn 2.
 - 18.1.1. Failure to SIGN ON shall result in that boat being penalised three (3) points for the first race of the session (but not worse than DNF). Failure to SIGN OFF shall result in that boat being penalised three (3) points for the last race of the session (but not worse than DNF). Penalties shall be applied without a hearing.
- 18.2. All Maritime Queensland Aquatic Event conditions must be followed including:
 - 18.2.1. All Participating ships are not to impede power driven vessels traversing Manly Boat Harbour and associated channels.
 - 18.2.2. All Participating ships are to obey the gazetted speed limit in Manly Boat Harbour (6 knots).
- 18.3. No Spinnakers are to be flown in the Manly Harbour 6-knot area.
- 18.4. No sailing vessel shall berth on or impeded traffic to/from the RQYS fuel dock without permission from the RQYS Sailing or Marina Office.
- 18.5. A boat that retires from a race shall notify the race committee at the first reasonable opportunity.

19. REPLACEMENT OF CREW OR EQUIPMENT

- 19.1. Substitution of competitors is not allowed without prior written approval of the race committee.
- 19.2. Substitution of damaged or lost equipment is not allowed unless authorized in writing by the race committee. Requests for substitution shall be made to the committee at the first reasonable opportunity, which may be after the race.

20. EQUIPMENT AND MEASUREMENT CHECKS

- 20.1. A boat or equipment may be inspected at any time for compliance with the class rules, notice of race and sailing instructions.
- 20.2. [DP] When instructed by a race official on the water, a boat shall proceed to a designated area for inspection.

21. OFFICIAL VESSELS

- 21.1. Official vessels will be identified by displaying a white flag with black letters 'RC' or red 'MEDIA'.

22. SUPPORT TEAMS

- 22.1. Team leaders, coaches and other support persons shall stay outside areas where boats are racing from the time of the preparatory signal for the first start until all boats have finished or retired or the race committee signals a postponement, general recall or abandonment.
- 22.2. On the water, the race committee intends to monitor and communicate with competitors on VHF radio channel 77.

23. TRASH DISPOSAL

- 23.1. Trash may be placed aboard official or support person vessels.

24. BERTHING

- 24.1. Restrictions may be placed on where vessels may be stored or rigged by the RQYS Sailing or Marina office.
- 24.2. No tie down restraints may penetrate the ground deeper than 300mm due to lawn irrigation systems.
- 24.3. No Vehicles or trailers are to be on the rigging lawns at any time.**
- 24.4. Road Trailer storage shall be in the "VX One Area" see SI Attachment C.

25. PRIZES

- 25.1. Prizes will be given as follows:
 - 25.1.1. 1st, 2nd and 3rd overall
 - 25.1.2. 1st handicap
 - 25.1.3. Cordukes Clubhouse Trophy
 - 25.1.4. Commodore Cup
 - 25.1.5. President's Trophy
 - 25.1.6. Ferry Patron's Trophy
 - 25.1.7. Casper Memorial Trophy
- 25.2. Other prizes may be awarded at the discretion of the Organising Authority

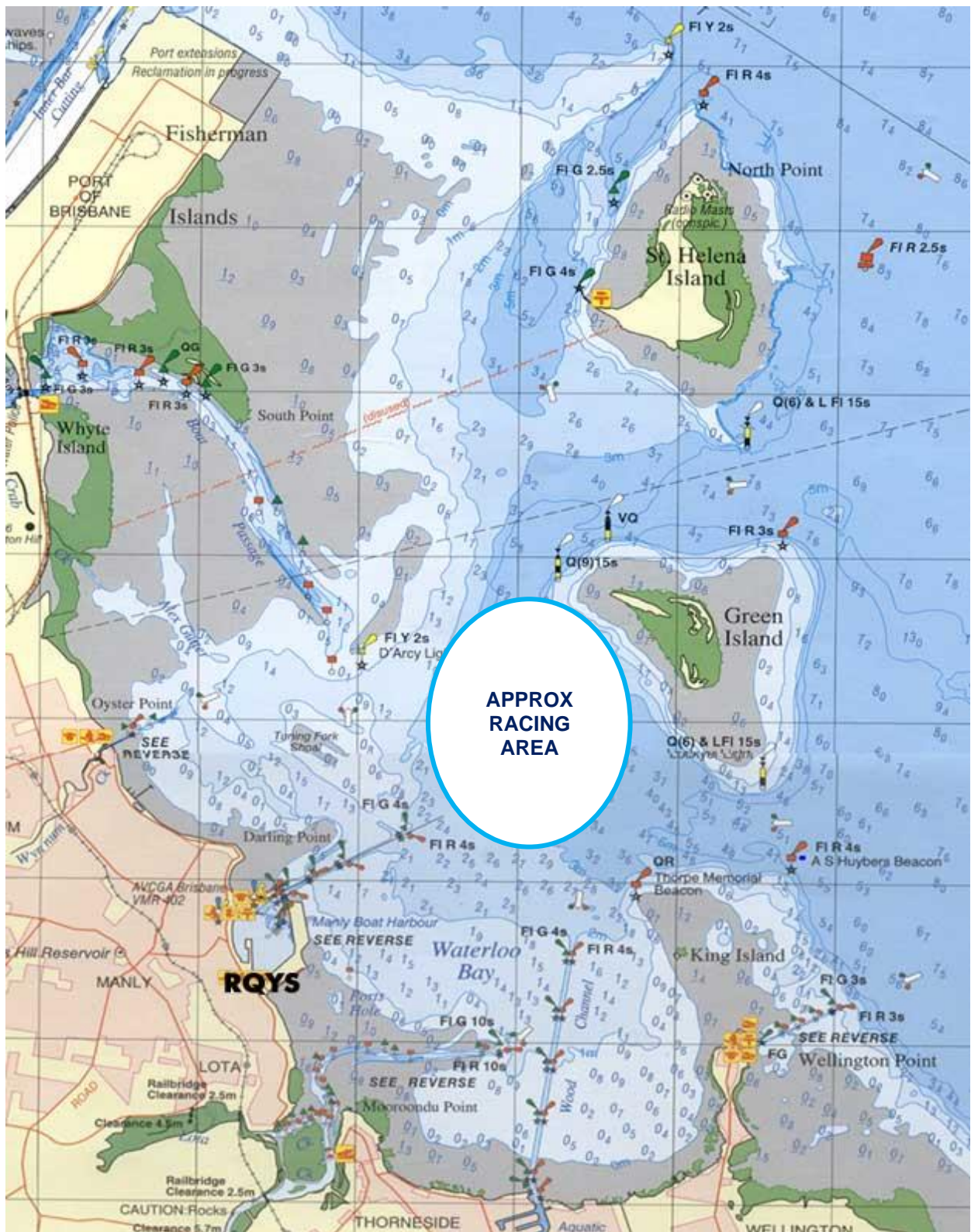
26. RISK STATEMENT

- 26.1. RRS 3 states: 'The responsibility for a boat's decision to participate in a race or to continue to race is hers alone.' By participating in this event each competitor agrees and acknowledges that sailing is a potentially dangerous activity with inherent risks. These risks include strong winds and rough seas, sudden changes in weather, failure of equipment, boat handling errors, poor seamanship by other boats, loss of balance on an unstable platform and fatigue resulting in increased risk of injury. **Inherent in the sport of sailing is the risk of permanent, catastrophic injury or death by drowning, trauma, hypothermia or other causes.**
- 26.2. Competitors participate in this event entirely at their own risk. The organising authority will not accept any liability for material damage or personal injury, or death sustained in conjunction with or prior to, during, or after the event.

27. INSURANCE

- 27.1. Each participating boat shall be insured with valid third-party liability insurance with a minimum cover of \$10,000,000AUD per incident or the equivalent.

SI ATTACHMENT A

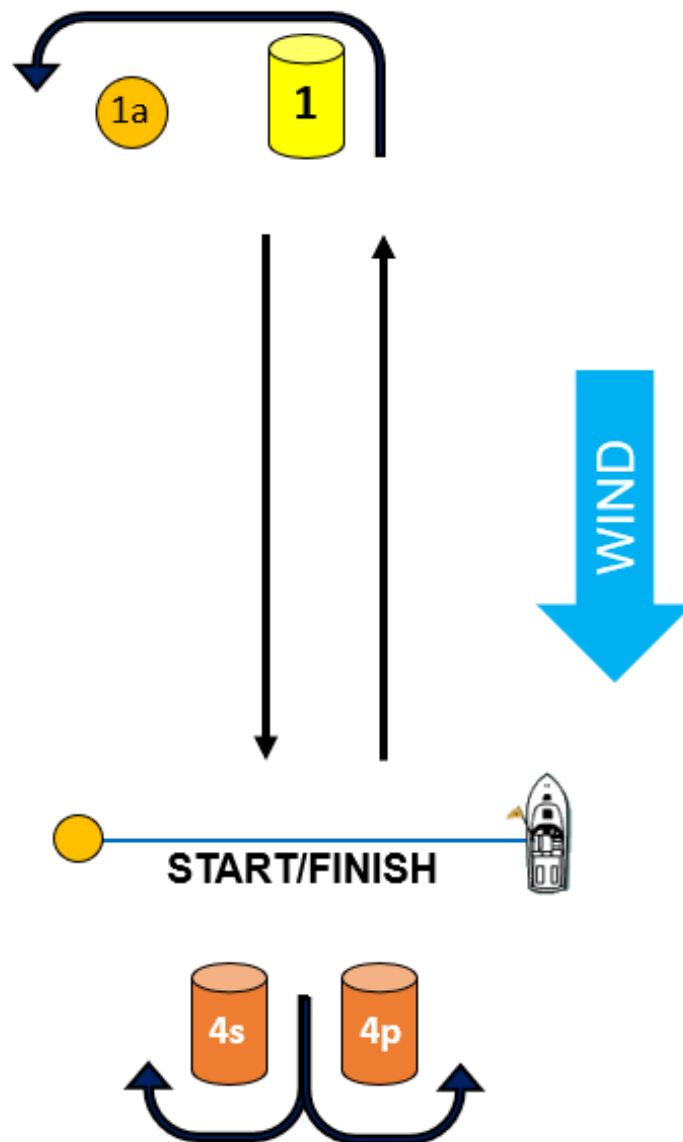


SI ATTACHMENT B

Course: Leeward Finish

[DP] Competitors shall not pass between the RC Signal Vessel and the Start Pin in completing the course unless starting or until finishing.

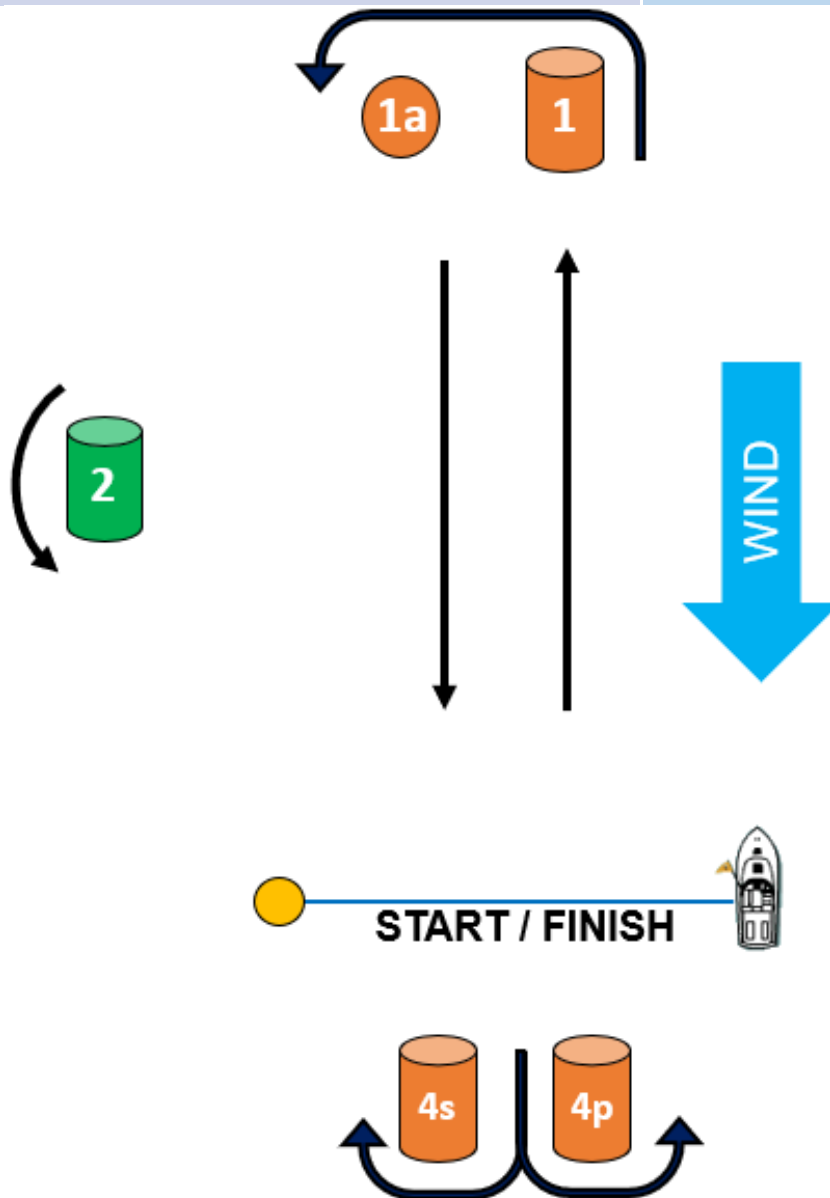
| CODE | COURSE | MARKS DESCRIPTION |
|------|---|--|
| LA2 | Start – 1 – 1a – 4s/4p – 1 – 1a – Finish | Mark 1: Yellow Inflatable |
| LA3 | Start – 1 – 1a – 4s/4p – 1 – 1a – 4s/4p – 1 – 1a – Finish | Marks 4s & 4p: Orange Inflatables |
| | | Start Pin, Finish Pin & 1a: Orange Teardrop |
| | | Change Mark: Purple Inflatable |



Course: Triangular

[DP] Competitors shall not pass between the RC Signal Vessel and the Start Pin in completing the course unless starting or until finishing.

| CODE | COURSE | MARKS DESCRIPTION |
|------|---|---|
| T3 | Start – 1 – 1a – 4s/4p – 1 – 1a – 2 – 4s/4p – 1 – 1a – Finish | Marks 1: Yellow Inflatable |
| | | Mark 2: Green Inflatable |
| | | 4s/4p: Orange Inflatable |
| | | 1a & Start/Finish Pin: Orange Teardrop |
| | | Change Mark: Purple Inflatable |



VXOne Storage & Temp 18ft Skiff Trailer
Storage

Please see Main Reception on arrival for a gate pin code.

NO Vehicles or Trailers are to be on the lawns at ANY TIME.

For the duration of the regatta trailers may be kept in the VXOne storage area.

Lawn 3

Pin Required
Gates

Short Term loading/unloading

Sailing Office

Main Reception

Marina Office

Lawn 2

Girdis Room

Main Lawn

Club House &
Bistro / Bar

Main Ramp

