



WELCOME INFORMATION PACK



ROYAL QUEENSLAND YACHT SQUADRON 578 Royal Esplanade Manly QLD 4179

ABOUT RQYS

The Royal Queensland Yacht Squadron (RQYS) is one of Australia's most prestigious and historically rich yacht clubs, located in the picturesque setting of Manly, Brisbane. Founded in 1885, RQYS has been at the heart of Queensland's sailing and boating community for over a century. The Squadron is renowned for its world-class facilities, passionate members, and commitment to promoting the sport of sailing at all levels.



RQYS offers a range of services and amenities, including modern marina facilities, a vibrant clubhouse, and a comprehensive suite of sailing programs. As a hub for competitive sailing, the Squadron regularly hosts major national and international regattas, bringing together elite sailors from around the globe. Whether it's training, racing, or leisure cruising, RQYS provides a dynamic and welcoming environment for all its members.



With its prime location on Moreton Bay, RQYS boasts easy access to some of the most beautiful and protected waters in Southeast Queensland. From the lively social calendar to its focus on developing sailing talent, RQYS continues to be a cornerstone of Queensland's maritime culture, upholding a tradition of excellence and fostering a love for the sea.

ABOUT THE REGATTA

Welcome to the 2025 Musto Australian Optimist Dinghy Championship, proudly hosted by the Royal Queensland Yacht Squadron (RQYS). This prestigious regatta brings together the best young sailors from across Australia and beyond, competing in the iconic Optimist dinghy class—a boat that has become synonymous with junior sailing and the development of future champions.

The Musto Australian Optimist Dinghy Championship is one of the key events on the Australian sailing calendar, offering competitors the opportunity to race at a world-class venue while honing their skills in a highly competitive environment. With a strong emphasis on sportsmanship, camaraderie and fun, this regatta provides the perfect platform for young sailors to challenge themselves, make lasting memories, and showcase their talent on the national stage.

Welcome/Opening Ceremony:

There will be a march past as part of the opening and welcoming ceremony, on Saturday 11 January, the sailors will be asked to congregate in the RQYS main members car park at the front entrance to the club, they will then march up the main drive and around to the main rigging lawn where the welcome ceremony will be held. Please encourage sailors to wear their State or Club shirts for the ceremony, state signs will be provided.

Event Area:

As you are aware, summer in QLD it is going to be hot, and we can't express to you how important it is for the sailors to rest in the shade on the rigging lawns and around the club and drink plenty of water. We are very fortunate at RQYS to have various rigging lawns. For the event, the first ¼ of the main rigging lawn will become an event chill and relax area, with a large marque to provide shade for briefings, rest and socialising during the event. We will also have the use of the Girdis room once measurements and registration are completed which is an airconditioned space that leads directly onto the main rigging lawn, this space can be used for rest and relation of sailors and their families throughout the event.

In addition, the Sailors and families are always welcome within the clubhouse, we just request that shoes (at least thongs) are always worn, in addition it is requested that sailors do not wear wet sailing gear into the restaurant area. Just a reminder that there is a no hats at the bar policy – otherwise the bell maybe rung and the shout is on you!

Boat Rigging and storage Areas



Rigging areas will be allocated to states on the main rigging lawns 1,2 and 3. Toilet and change room facilities are located under the marina office adjacent to rigging lawn 2. Launching and retrieving of Opti's will be via the main ramp. Dolly's will be stored during the day in allocated pens on the westerns side of the ramp on the grass area. Please note: the roadways are to be kept clear at all times, this includes not storing or rigging of boats or dolly's on the roadway. Hoses are provided in numerous places at the ramp and

around the rigging lawns so please follow instructions from volunteers on where the best hoses are for your State to minimise congestion at the ramp.

Competitors social/dinner:

Weather permitting on Tuesday the 14 January we will host a casual competitor's dinner on the main rigging lawn shortly after the completion of the days racing in the "event area" with live music. More information will be provided closer to the event.

Bay Lookout:

Located at the north eastern extremity of the Squadron grounds, this building incorporates wheelchair friendly showers and toilets and coin operated laundry. Access to these facilities on the lower level is by way of a pin code or members access pass. The upper level is an elevated viewing platform providing excellent views of the junior sailing fleets. This is a wonderful all-weather spot to watch (with binoculars) the sailors.

BBQ Areas – for social events during regatta:

If you are wanting to have a casual BBQ dinner with your team in sunny QLD, we have a few BBQ areas available around the club that can be used (evenings only as they will be used during the day for the regatta). Please reach out to reception@rqys.com.au if you would like to make use of these facilities.

Canaipa



RQYS Canaipa is the jewel in the RQYS crown. It is the Squadron's 'down-the-bay' property on the north east tip of Russell Island. This exclusive haven is part of the club's sporting facilities and is available for use by all full members (not social members). However the Club has agreed that for this regatta any travelling families who have access to their own RIB or boat (about a 45 minute boat ride) can make use of this facility during the Nationals – we just request that you send an email request to canaipa@rqys.com.au to notify the onsite care taker of your arrival.

The premises covers some 1.1 hectares, and includes shower, toilet and laundry facilities, swimming pool, covered barbecues, picnic areas and extensive lawn areas, making it particularly attractive to members with smaller vessels with more limited accommodation. A full-time caretaker resides on-site and ensures everything is just right for members' visits.

An all-weather anchorage is available for boats in the near vicinity and mooring is available for tenders at the pontoon. RQYS Canaipa is a private facility with no public access permitted



REGATTA SCHEDULE

Date	Event	Timing
Thursday 9 January	After 12 noon only boats can begin to be unloaded onto the main rigging lawns and stored in the areas allocated per state.	12 noon
Friday 10 January	Pre-Registration Teams Racing Measurement	1000-1700
Saturday 11 January	Official Arrival Day Registration and Measurement Teams Racing Competitors meeting Teams Racing Championships <i>Welcome function and AOTR Presentation</i>	0900-1600 0930 1100 1730
Sunday 12 January	Coach & Support Boat Briefing (Compulsory) Regatta Briefing (Compulsory) Championship Racing (First Warning Signal)	0930 1000 1200
Monday 13 January	Coach and Jury Meeting Daily Briefing Championship Racing (First Warning Signal)	0930 0945 1200
Tuesday 14 January	Coach & Jury Meeting Daily Briefing Championship Racing (First Warning Signal) <i>Regatta Social Event for Competitors & Families</i> AIODA AGM	0930 0945 1200 Post racing 1700
Wednesday 15 January	Reserve Day	
Thursday 16 January	Coach & Jury Meeting Daily Briefing Championship Racing (First Warning Signal)	0930 0945 1200

Friday 17 January	Official Departure Day	
	Coach & Jury Meeting	0900
	Daily Briefing	0945
	<i>Championship Racing (First Warning Signal)</i>	1100
	<i>Closing & Presentation Ceremony</i>	Approx 1700

* Any updates to this schedule shall be posted on the official noticeboard

BOARDFOOD & BEVERAGE

The RQYS Bar and Bistro is open to visitors and members, and pairs great food with stunning views and a front seat to a hive of sailing and boating activity. We're open 7 days a week from 7am, offering breakfast until 11am daily, and all-day dining from 11am to close. There's of course a range of takeaway options available for our hungry sailors, and a shaded children's playground nestled alongside the boardwalk provides secure, family-focused fun.



OPENING HOURS

Breakfast 7am to 11am

Full Menu 11am to 8:30pm

Last Drinks 9pm

Bar Closes 9:30pm



View the Menu or Book a Table at <https://www.rqys.com.au/dining/>

There will also be a **RQ Youth Squad Parent Volunteer BBQ** selling Bacon and Egg Burgers with cold drinks from 8am – 11am each day of racing on the main rigging lawn outside the sailing office. Come have a breakfast burger and grab your sailors a cold Powerade for the day and show your support to the local youth sailors.

ACCESS AND BOAT STORAGE



Individualized Access Pins

Each competitor will be provided with a unique Access Pin number, granting access to the pedestrian gate and after-hours change room facilities for the duration of the regatta. Please ensure your pin is kept secure and only used by authorized personnel.

Vehicle Access

If you experience any issues with access, please contact the helpful reception team at the main entrance.

Boat Storage

Boats may be stored on the Rigging Lawns for the duration of the regatta.

This summer RQYS is a hive of activity, and our Opti Nationals fit in between 2 other huge National events, the Laser Nationals (1st Jan – 8th Jan) and the 18-foot Skiff Nationals (18th Jan- 20th Jan) being hosted at the club.

Due to these events we need to be a little stricter than usual around timing of loading in and out of Optis. **Opti's cannot be stored on rigging lawns 1, 2 or 3, prior to 12pm on Thursday the 9th January**, due to the completion of the Laser Nationals. Early Arrivals can park loaded trailers in the regatta trailer parking area.

To ensure a smooth transition into the 18 Foot Skiffs (that start the day after our event) we will need all Opti's packed up and removed from the main rigging lawns 1 and 2 by the end of the day on Friday after

presentation. There will be opportunity for boats to be moved to other areas of the grounds if you are unable to remove on Friday evening, please see the sailing office for direction.

Extended storage for a maximum of two extra weeks may be granted, but only with written approval from the Sailing Office. Please email sailing@rqys.com.au for storage requests.

No road trailers or vehicles are allowed on the Rigging Lawns at any time. For loading and unloading, please use the short-term loading/unloading bays adjacent to Rigging Lawn 2 or the designated trailer bays. Once boats are unloaded road trailers can be stored in the area marked “road trailer parking” on the map. Please be respectful when parking trailers in the allocated area and be aware trailers may need to be moved to fit everyone in.



Arrivals Prior to 12pm 9th January

For competitors arriving prior to 12pm on Thursday 9th of January, boats can be stored and rigged on the Opti rigging lawn and ramp to the west of the main club house, or alternatively, be stored and rigged on the Windsurfer Area at the end of the main drive on the right-hand side, with access to ramp 4 and beach for launching and retrieving boats. There are amenities located under the Bay Lookout for showering etc, that is easily accessed from this area.

SUPPORT BOAT INFORMATION

Registration of Support Boats

All support boats are required to register online prior to the event. Registration can be completed via the AIODA website or the below link:

<https://www.revolutionise.com.au/rqys/events/rsvp/274930>

Support Boats will be supplied with and required to display Identifying flags as outlined in the regatta Sailing Instructions.

Launching Facilities

Support Boats may launch from the Main RQYS Ramp outside of dinghy launching times, while dinghies are launching the Main Ramp will be closed to all vehicles. Best alternative ramp while the main ramp is closed is the Public Boat Ramp located directly next to the Club Front Entry. **All coach and support boats wanting to launch and retrieve prior to the 9th of January, will have to do so via the Public Boat Ramp only.**

Fuel

RQYS has 24/7 fuelling at the fuel pontoon directly next to the Main Ramp, the fuel pontoon is operated via an automated card only kiosk located near the pumps on the fuel pontoon.

In Water Berthing

Registered support boats are entitled to in water berthing. Berthing for support boats is available on the VIP Docks and the shore side of A/B Row (accessed down the channel between B & C row berths). Support boats are required to follow any further direction from the RQYS Sailing or Marina Office to the best of their ability. Please be considerate when storing your rib and understand that boats will need to be rafted up in the berthing areas. **While the Laser Nationals are on, no berthing is available for Opti support or coach prior to the 9th of January.**



REGATTA DOCUMENT & NOTICES

All regatta documents, notices & amendments will be available on the Official noticeboard hosted electronically on the regatta webpage: <https://www.optimist.org.au/nationals/official-notice-board>



RACING AREA

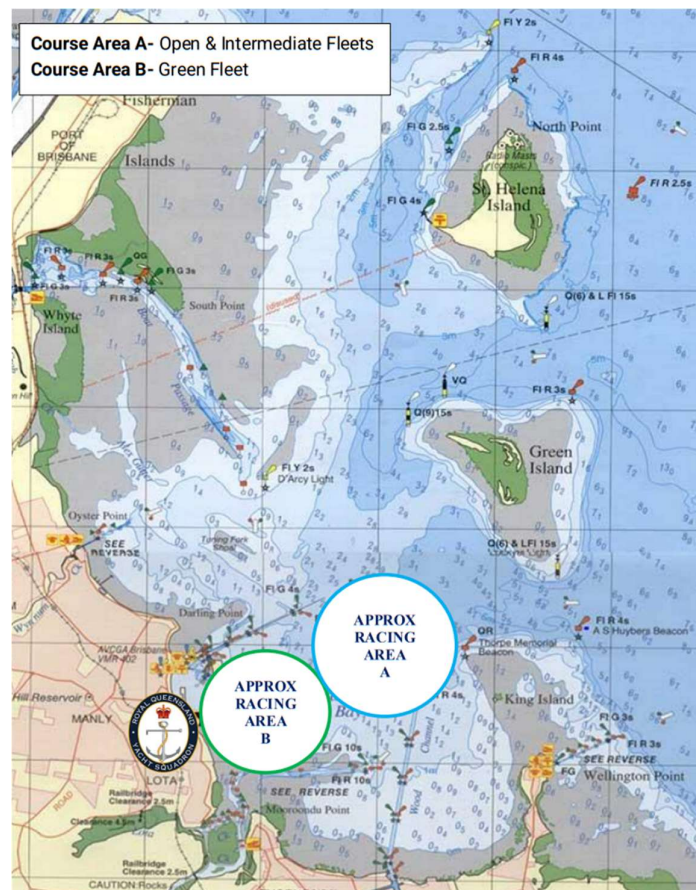
The racing area will be located in Waterloo Bay, directly in front of the Royal Queensland Yacht Squadron (RQYS). All competitors must exit the marina and head south of the channel to reach the designated race area.

Channel Navigation and Safety

When transiting through the Manly Marina, it is important to note that **all sailing vessels must give way to power-driven vessels**. Additionally, boats should always remain on the **right-hand side** of the channel when entering or exiting the marina.

Please be aware of the sandbanks on both sides of the Manly Marina Channel, which may affect a boat's ability to exit, especially at low tide. Ensure you are mindful of tidal conditions to avoid grounding.

For safety and smooth navigation, always exercise caution and follow the guidelines provided.



EMERGENCY CONTACTS

Emergencies	000	
RQYS Sailing Manager	0424 101 732	
Royal Queensland Yacht Squadron	(07) 3396 8666	578 Royal Esplanade, Manly QLD
Manly Coast Guard	(07) 3396 5911	40 Trafalgar St, Manly QLD
Wynnum Police	(07) 3308 8100	82 Pine St, Wynnum QLD
Wynnum Fire & Rescue	(07) 3396 3297	2006 Wynnum Rd, Wynnum West
Brisbane Water Police	(07) 3895 0333	2 Howard Smith Dr, Port of Brisbane

Location, access & communication of Next of Kin Details

Sailing Office & SailSys Databases including information gathered from regatta registrations and/or indemnity forms.

Location of Nearest Emergency Medical Facilities

Redlands Hospital	(07) 3488 3111	21 Weippin St, Cleveland QLD
-------------------	----------------	------------------------------

Location of Nearest Medical Facilities

Wynnum Family Health Service	(07) 3893 0093	116 Edith St, Wynnum QLD
Doctors on Manly Road	(07) 3348 6111	12 Manly Rd, Manly QLD
Silky Oaks Medical Practice	(07) 3396 9855	218 Manly Rd, Manly QLD
Dental On Cambridge	(07) 3348 6661	4/99 Cambridge Parade, Manly QLD

LOCAL SERVICES

Sail Maker

North Sails

1/264 Tingal Rd, Wynnum QLD
3396 5822

Hood Sails

181 Wynnum Esplanade, Wynnum QLD
0419 799 958

Ullman Sails

112 Glenora St, Wynnum QLD
(07) 3348 7245

Chandlery

Muir Marine

453 Esplanade, Manly QLD
(07) 3396 9988

Road Tech Marine

20 Redland Bay Rd, Capalaba QLD
(07) 3914 9543

Boat Building / Repairs – Located at RQYS

JSA Marine

(07) 3348 5682

David Glenn Boat Building

0412 878 144

Physio

Manly Physiotherapy & Pilates

3/443 Esplanade, Manly QLD
(07) 3396 8137

Bounce Physio Birkdale

190 Birkdale Rd, Birkdale QLD
(07) 3822 2122

Pharmacy

Manly Village Pharmacy

9/222 Stratton Terrace, Manly QLD
(07) 3396 8999

Groceries

IGA Manly Village

Cnr Stratton Tce & Cambridge Parade
(07) 3396 1980

Woolworths Wynnum Central

145 Florence St, Wynnum QLD
(07) 3513 4416

Butcher

The Local Butcher

222 Stratton Terrace, Manly QLD
(07) 3396 2195

Bakery

Manly Bakery

222 Stratton Terrace, Manly QLD
(07) 3396 5688

Accommodation

[Manly Marine Cover Motel](#)

Located on the Grounds of RQYS
(07) 3348 1000

Limited Camping Facilities at RQYS

[Limited camping MAY be available](#)
(07) 3396 8666

[The Manly Hotel](#)

54 Cambridge Parade, Manly QLD
(07) 3249 5999

[Waterloo Bay Hotel](#)

75 Berrima St, Wynnum QLD
(07) 3893 2344

[Pelican's Nestle Inn](#)

149 Wynnum Esplanade, Wynnum QLD
(07) 3396 3214

[Wynnum Anchor Motel](#)

14 Adam St, Wynnum QLD
(07) 3396 3037

LOCAL WEATHER TIDE

Local Weather:

The RQYS Weather Station can be found at:

<https://www.rqys.com.au/weather-station/>

The Weather Station records from above the club Bay Lookout.

BOM: Radar: <http://www.bom.gov.au/products/IDR663.loop.shtml>

Marine Forecast:

<http://www.bom.gov.au/qld/forecasts/moreton-bay.shtml>

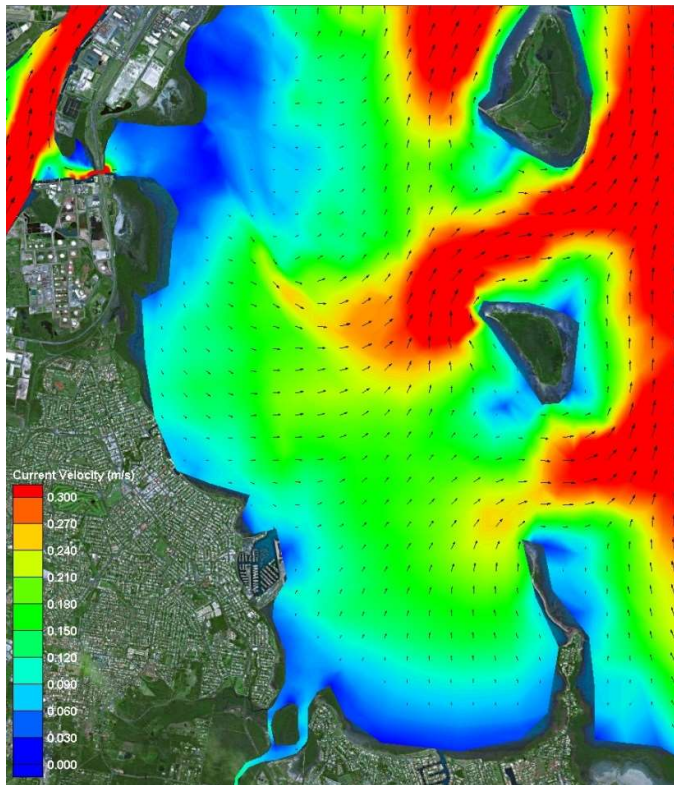
Other Popular forecasts:

Predict Wind: <https://forecast.predictwind.com/table/>

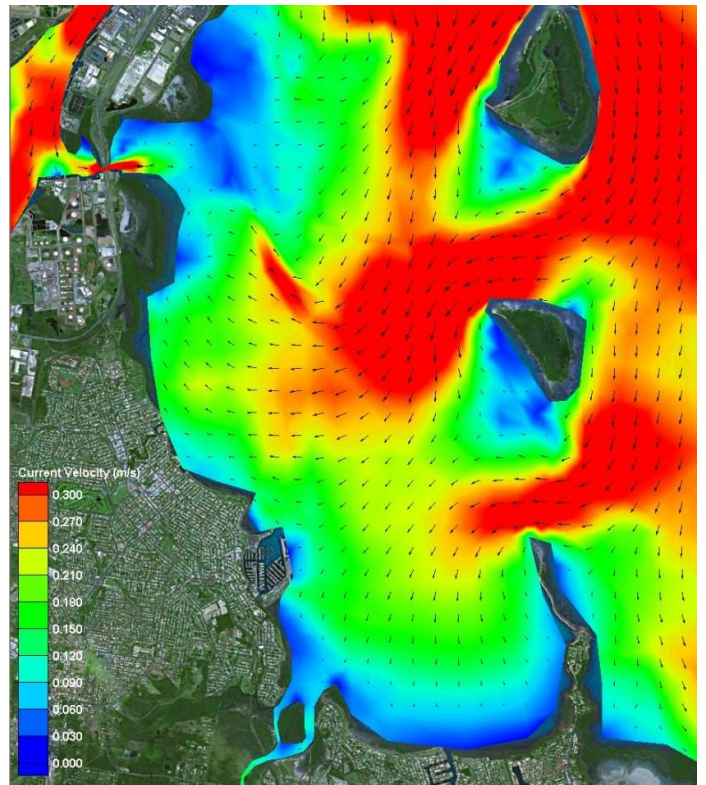
Seabreeze: <https://www.seabreeze.com.au/weather/wind-forecast/brisbane>

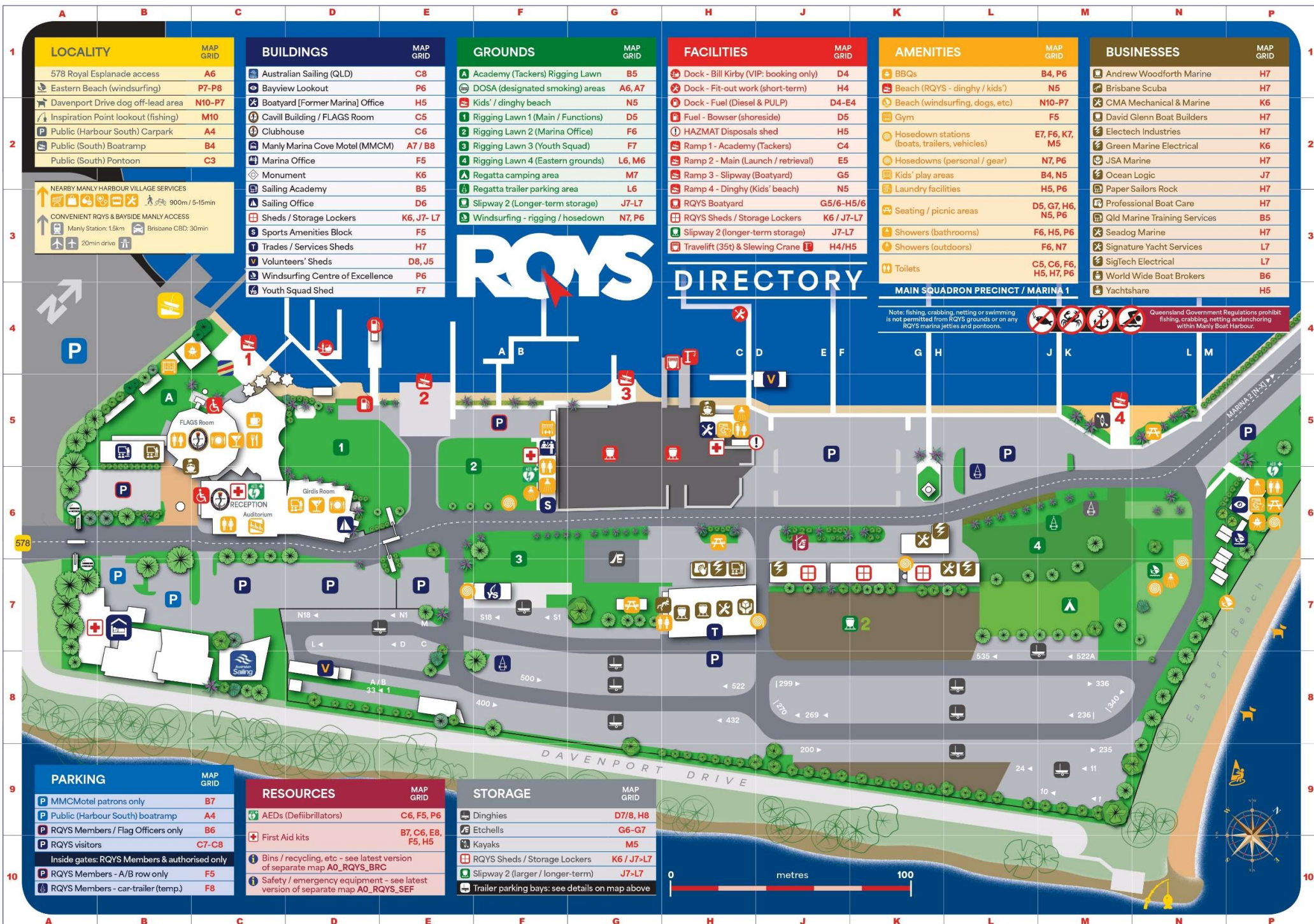
WillyWeather: <https://wind.willyweather.com.au/qld/brisbane/brisbane.html>

Waterloo Bay Ebb



Waterloo Bay Flood





ROYAL QUEENSLAND YACHT SQUADRON – THE SAILING GATEWAY TO MORETON BAY

