



140th Sailing Season

OFF THE BEACH

14th September 2024

Thru to

12th April 2025

SAILING INSTRUCTIONS

(SI)

Including Amendment 1 & 2

Organising Authority

ROYAL QUEENSLAND YACHT SQUADRON LTD

578 Royal Esplanade, Manly, QLD 4179

Race Committee	Sailing Manager Chairperson of Sailing Committee The Nominated Flag Officer Race Officer
Sailing Office	Mark Dingley – Sailing Manager Austin Sims – Sailing Administrator Phil Tooth – Volunteer Coordinator
Sailing Committee	Greg Kemp (Chairperson) Christine Bridge Louise Davis Al Harrison Guy Moreton Mick Patrick Anton Prange
Race Officers	Louise Davis (IRO) Alan Crawford (NRO) Mark Dingley (NRO) Guy Morton (NRO) John O'Brien (NRO) Greg Sinclair (NRO) Paul Bolton (CRO) Louise Bright (CRO) Kylie Fleming (CRO) Jan Kemp (CRO) Don Murray (CRO)
Protest Committee	Nev Willis (IJ/NU) (Chairperson) Mark Gallagher (NJ) Jan Kemp (NJ) Greg Kemp (NJ) Michael O'Neill David Irvine (CU)
Call Sign	RQ90 (VHF Channel 90) RQ91 (VHF Channel 91) RQ72 (VHF Channel 72) RQ77 (VHF Channel 77)
Contact Details	The Royal Queensland Yacht Squadron 578 Royal Esplanade, MANLY, QLD 4179 07 3396 8666 (Option 6) sailing@rqys.com.au

INTRODUCTION

This is the 140th Sailing Season at the Royal Queensland Yacht Squadron. Seasons racing has been a regular part of the Squadrons activities during that period, first on the Brisbane River, and then on the bay, predating the clubs move to its current location in Manly.

Off the Beach and Etchells Sailing at the Squadron encompasses a range of classes on a number of courses, with Saturdays sometimes featuring several different varieties of sailing occurring over the day and on the bay.

Off the Beach refers to dinghies, catamarans, boards, VX One and skiffs. Most of this racing is one-design (OD) and the club has long fostered strong OD classes. There is also an element of Yardstick (VYC – Class Based Handicapped) for boats that do not have enough entries to constitute a division.

As a parallel to Off the Beach racing, the Squadron's Etchells fleet also races on Saturdays, sharing the Northern Course with the Multihulls, Skiffs, VX Ones.

The notation '[NP]' in a rule of the sailing instructions (SIs) means that a boat may not protest another boat for breaking that rule. This changes RRS 60.1(a).

The notation '[DP]' in a rule means that the penalty for a breach of the rule may, at the discretion of the protest committee, be less than disqualification.

The notation '[SP]' in a rule of the SIs means that a standard penalty may be applied by the race committee without a hearing. This changes RRS 63.1 and A5.

1. RULES

- 1.1. The event is governed by the rules as defined in The Racing Rules of Sailing (RRS). For boards Appendix B Windsurfing Competition Rules will apply.
- 1.2. The Australian Sailing prescriptions and special regulations of Australian Sailing (AS) Part 2 will apply (See Attachment C).
- 1.5. For Etchell Class Boats SI 1.2 is amended to AS Special Regulations Part 1 Category 7 shall apply.
- 1.3. RRS Appendix A5.3 will apply.
- 1.4. RRS Appendix T – Arbitration shall apply.
- 1.5. RRS Appendix P may be applied at any time at the discretion of the Race Committee.
- 1.6. Current Class rules will apply.
- 1.7. 29er Class / Finn Class: Appendix P5 (flags O and R) will apply.
- 1.8. For a class to warrant its own One Design (scratch) score, five (5) or more of that class need to be entered in the Seasons Points Series.
- 1.9. [SP] Failure to SIGN ON shall result in that boat being penalised three (3) points for the first race of the session (but not worse than DNF). Failure to SIGN OFF shall result in that boat being penalised three (3) points for the last race of the session (but not worse than DNF). Penalties shall be applied without a hearing. This changes RRS 63.1 and A5.
- 1.10. The RQYS Constitution, Club Participation Rules House Rules and Codes of Conduct will apply (<https://www.rqys.com.au/policiesanddocuments/>).

2. CHANGES TO SAILING INSTRUCTIONS

- 2.1. Any change to the sailing instructions will be posted before 0900 on the day it will take effect, except that any change to the schedule of races will be posted by 2000 on the day before it will take effect.

3. COMMUNICATIONS WITH COMPETITORS

- 3.1. **Notices to competitors will be posted on the official notice board located at <https://www.rqys.com.au/140th-sailing-season-otb-club-racing/> .**
- 3.2. The race office is located at The RQYS Sailing Office located adjacent to Main Rigging Lawn, telephone 3396 8666, email sailing@rqys.com.au .
- 3.3. [DP][NP] While racing, except in an emergency, a boat shall not make voice or data transmissions and shall not receive voice or data communication that is not available to all boats.
- 3.4. **Secondary to the Official noticeboard “instant messaging” system WhatsApp may be used to notify skippers of timely information, confirmation of days course, Protest Time limit etc. join the group at: <https://chat.whatsapp.com/Dlxhcv8kclKBLxoQTEstPg> .**

4. CODE OF CONDUCT [DP][NP]

- 4.1 Competitors and support persons shall comply with reasonable requests from race officials.
- 4.2 Competitors and support persons shall handle any equipment or place advertising provided by the organizing authority with care, seamanship, in accordance with any instructions for its use and without interfering with its functionality.

5. SIGNALS MADE ASHORE

- 5.1. Signals made ashore will be displayed at the official flag pole located at the top of the Eastern Gangway of the Bill Kirby Docks.
- 5.2. When flag AP is displayed ashore, '1 minute' is replaced with 'not less than 45 minutes' in Race Signals AP.

6. SCHEDULE OF RACES

- 6.1. The schedule of race days is detailed in the [RQYS 2024 – 2025 Sailing Program](#).
- 6.2.

Race	First Warning Signal
Northern Course	1300 hours
Southern Course	1330 hours

- 6.3. A maximum of 2 races shall be sailed per day of racing.
- 6.4. To alert boats that a race or sequence of races will begin soon, the orange starting line flag will be displayed with one sound at least five minutes before a warning signal is made.
- 6.5. No warning signal will be made after 1600 hrs.

7. CLASS FLAGS

- 7.1. Class flags shall be:

Fleet	Flag
Northern Course	
Etchells	White with Blue Class Insignia
Nacra 15	White with Blue Class Insignia
Hobie 16	Blue with Black Class Insignia
VX One	White with Black Class Insignia
12ft, 14ft, 16ft and 18ft Skiffs	Yellow and Blue 12ft Class Flag
29er	White with Red 29er Class Insignia
Northern Mixed Fleet	Yellow Flag
Northern Mixed Catamaran	Code Flag E
Southern Course	
Finn & Contenders	White with Blue Finn Class Insignia
ILCA 7	White with Red Class Insignia
ILCA 6	Green with Red Class Insignia
ILCA 4	Yellow with Red Class Insignia
Sailboards	White with Red Bic Techno Class Insignia
Flying 11	White with Blue Class Insignia
RS Feva	White with Black & Pink Class Insignia
RS 200	Code Flag E
OK Dinghy	White with Red OK Dinghy Insignia
Optimist and Sabot	White with Optimist Black Insignia
Southern Mixed Fleet	Yellow Flag

8. RACING AREA

8.1 SI Attachment A shows the location of the racing areas.

9. COURSES

- 9.1. The diagrams in SI Attachment D shows the courses, including the approximate angles between legs, the order in which marks are to be passed, and the side on which each mark is to be left.
- 9.2. No later than the warning signal, the race committee signal vessel will display the approximate compass bearing of the first leg.

10. MARKS

- 10.1. Marks are described SI Attachment D.
- 10.2. If one of the gate marks is missing then the remaining mark shall be left to port.

11. THE START

- 11.1. The starting line is between a staff displaying an orange flag on the signal vessel at the starboard end and the course side of the port-end starting mark.
- 11.2. [DP][NP]Boats whose warning signal has not been made shall avoid the starting area during the starting sequence for other races.
- 11.3. A boat that does not start within four (4) minutes after her starting signal will be scored Did Not Start without a hearing. This changes RRS A5.1 and A5.2.

12. THE FINISH

- 12.1. The finishing line will be between a staff displaying a blue flag on the finishing boat at the starboard end and the course side of the port-end finishing mark.
- 12.2. For the Southern Course Trapezoid, if the finishing boat downwind of the start vessel is not used, the finishing line will be between a staff displaying a blue flag on the start vessel at the port-end and the course side of the starboard-end finishing mark.

13. CHANGE OF THE NEXT LEG OF THE COURSE

- 13.1. When Sailing Courses I2a, I3a, O1a, O2a, O3a, the race committee will move the original mark or the finishing line to a new position. All other courses to change the next leg of the course, the race committee will lay a new mark (or move the finishing line) and remove the original mark as soon as practicable. When in a subsequent change a new mark is replaced, it will be replaced by an original mark.
- 13.2. Northern Course Only: If Mark 1 is changed Mark 1A will be ignored.

14. PENALTY SYSTEM

- 14.1. For the skiffs, 9ers and multihull class(es) RRS 44.1 is changed so that the Two-Turns Penalty is replaced by the One-Turn Penalty.
- 14.2. For Etchells and VX One, RRS 44.1 is amended in that the penalty for breaking a rule of RRS Part 2 shall be a One-Turn Penalty, except the penalty for breaking a rule of RRS Part 2 occurring within the zone as defined in RRS shall be a Two-Turn Penalty.

15. TIME LIMITS AND TARGET TIMES

15.1. The Race Target Time, and the Finishing Window are shown in the table below.

Race Target Time	Finishing Window	Finishing Window Optimist and Flying 11
40 minutes	15 minutes	25 minutes

- 15.2. The Finishing Window is the time for boats to finish after the first boat sails the course and finishes. Boats failing to finish within the Finishing Window, and not subsequently retiring, penalized or given redress, will be scored Time Limit Expired (TLE) without a hearing. A boat scored TLE shall be scored points for the finishing place one more than the points scored by the last boat that finished within the Finishing Window. This changes RRS 35, A5.1, A5.2 and A10.

- 15.3. The time limit for the first boat in each class will be 60 minutes.
- 15.4. Failure to meet the Time Limit will not be grounds for redress. This changes RRS 62.1(a).

16. HEARING REQUESTS

- 16.1. For each class, the protest time limit is 60 minutes after the last boat in that class finishes the last race of the day or the race committee signals no more racing today, whichever is later. The time will be posted on the official notice board.
- 16.2. Hearing request forms are available from the race office at <https://www.rqys.com.au/regatta-club-racing-documents-auditors/> or Hard Copies can be requested from the RQYS Sailing Office (adjacent to Main Rigging Lawn).
- 16.3. Notices will be posted no later than 30 minutes after the protest time limit to inform competitors of hearings in which they are parties or named as witnesses. Hearings will be held at a time and place advised on the hearing notice.

17. SCORING

- 17.1. There shall be three scoring methods: Season Points Series Scratch, Season Points Series PHS & Squadron Champion Series Scratch (Per NoR 6.6).
- 17.1.1. Any mixed divisions Scratch shall be replaced with Yardstick.
- 17.2. 1 race is required to constitute a series.
- 17.3. Score discards shall be as per the following:
- a. For Squadron Championship series, there will be 1 discard per 5 completed races.
- b. For Seasons Points series, there will be 1 discard per 5 completed races.
- 17.4. PHS Handicaps shall be defined by the "SailSys" system. SailSys is an online race management system. For further information regarding handicaps and scoring see <https://www.sailsys.com.au>.
- 17.5. Average Points:
- 17.5.1. Average points may be requested for season entries when racing is missed due to competing at a National or International class regatta or a World Sailing ranked event in the competitor's class, or in any other circumstance approved by the Sailing Committee.
- 17.5.2. These points shall be awarded for no more than four (4) days in a season.
- 17.5.3. To receive average points, sailors must request average points in advance by emailing sailing@rqys.com.au with a "Request for Average Points" form and have this approved by the Sailing Office BEFORE the missed day's racing.
- 17.5.4. Average Points will be awarded as per RRS A9 (b) only if there have been two (2) races in the series before the race the competitor is applying for average points for. If there have not been two (2) races in the series already, the Race Committee will determine the application of average points.
- 17.6. A boat which Does Not Compete (DNC) in a race shall be scored the number competitors within the fleet at the starting area, plus an additional three (3) points. This changes RRS A5.3.

18. SAFETY REGULATIONS [DP][NP]

- 18.1. [SP]All skippers shall SIGN ON before racing each day and SIGN OFF at the earliest possible time after the completion of racing (but not later than the end of protest time).
- 18.1.1. Attention is drawn to SI 1.9.
- 18.2. The skipper of a boat that retires or does not intend to continue racing is required to SIGN OFF immediately on return to shore.
- 18.3. A boat that retires from a race shall notify the race committee as soon as possible.

18.4. Competitors shall comply with the following harbour bylaws:

18.4.1. All sailing vessels shall give way to powered vessels at all times whilst inside the Manly Boat Harbour.

18.4.2. Once outside the Manly Boat Harbour, competitors are to as soon as possible stay outside of the main channel, keeping clear of powered vessels.

18.4.3. No Spinnakers are to be flown in the Manly Harbour 6-knot area.

19. [DP] REPLACEMENT OF CREW OR EQUIPMENT

19.1. Vessel entries may change sails and equipment throughout the season and retain points if they remain in the same division (a change of details / equipment form must be submitted and approved before the change is made).

19.2. If a skipper changes boat, classes or divisions, points for their season entry will remain with the boat, class / division they received these points in.

19.3. Boats intending to race with a sail number other than stipulated on their entry shall complete the Change of Details Form prior to racing. Failure to comply may result in the boat being scored DNC without a hearing for all races on that day. This changes RRS 63.1, A4 and A5.

19.3.1. Online Change of Details form can be found here: <https://www.rqys.com.au/regatta-club-racing-documents-auditors/>

20. EQUIPMENT AND MEASUREMENT CHECKS

20.1. A boat or equipment may be inspected at any time for compliance with the class rules, notice of race and sailing instructions.

20.2. [DP][NP] When instructed by a race official on the water, a boat shall proceed to a designated area for inspection.

21. OFFICIAL VESSELS

21.1. Official vessels will be identified by displaying a white flag with letter 'RC' or 'J' in black or red 'MEDIA'.

21.2. Club Coaches may provide advice to any competitor during club racing but not in races for which Squadron Championship points shall be awarded.

22. TRASH DISPOSAL

22.1. Trash may be placed aboard official or support person vessels.

23. BERTHING [NP] [DP]

23.1. No sailing vessel shall berth on or impede traffic to/from the RQYS fuel dock without permission from the RQYS Sailing or Marina Office.

23.2. Restrictions may be placed on where vessels may be stored or rigged by the RQYS Sailing or Marina office.

23.3. No tie down restraints may penetrate the ground deeper than 300mm due to lawn irrigation systems.

24. PRIZES

24.1. The 2024/2025 Presentations of Trophies for Seasons Points and Squadron Championships and other events will take place in a Squadron Function Room, to be advised by invitation in future. A list of major trophies is at SI Attachment B.

24.2. Only Financial Members are eligible for Seasons Points or Squadron Championship awards at the Junior and/or Senior Presentation of Trophies.

24.3. Other prizes may be awarded at the discretion of the Organising Authority.

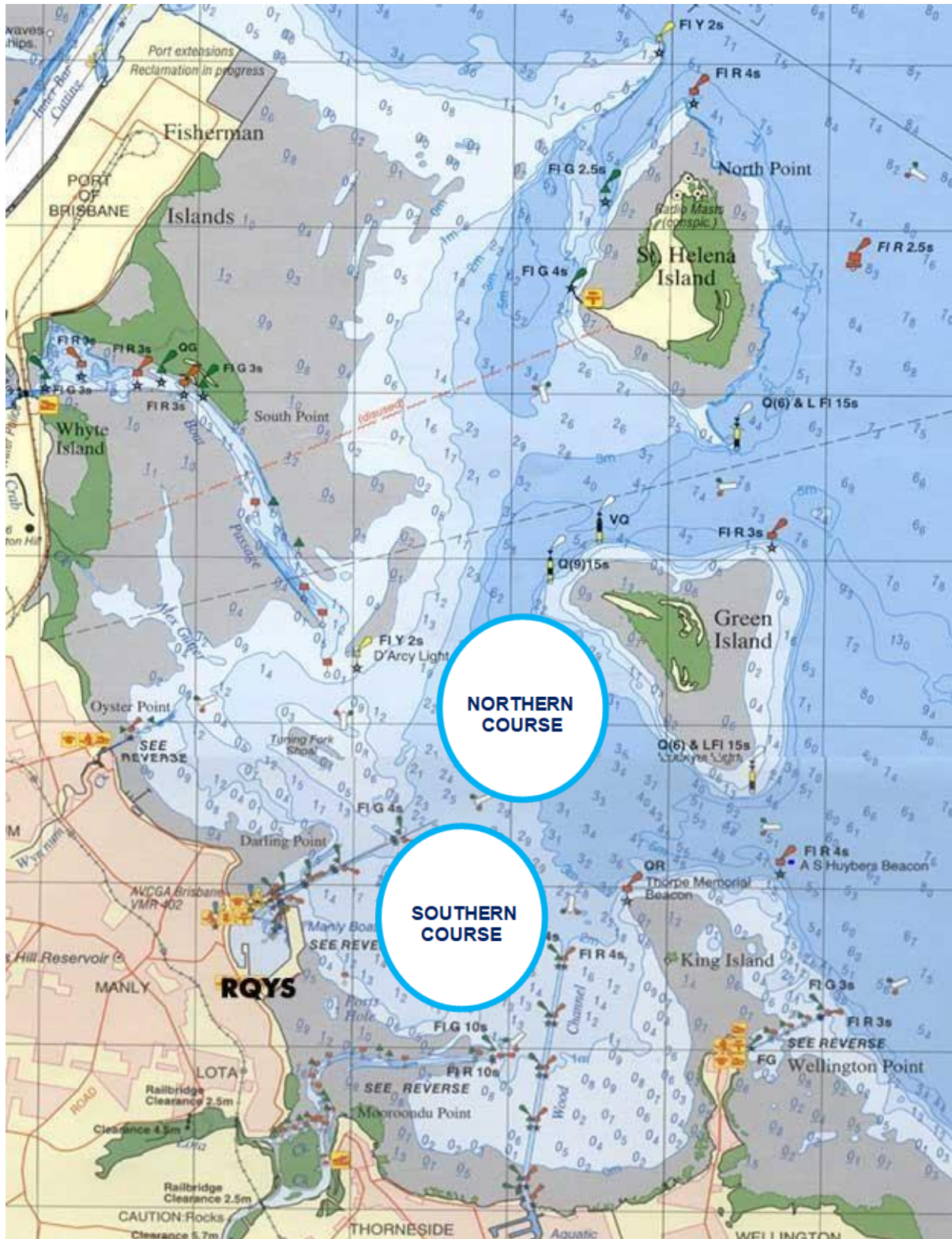
25. RISK STATEMENT

- 25.1. RRS 3 states: 'The responsibility for a boat's decision to participate in a race or to continue to race is hers alone.' By participating in this event each competitor agrees and acknowledges that sailing is a potentially dangerous activity with inherent risks. These risks include strong winds and rough seas, sudden changes in weather, failure of equipment, boat handling errors, poor seamanship by other boats, loss of balance on an unstable platform and fatigue resulting in increased risk of injury. **Inherent in the sport of sailing is the risk of permanent, catastrophic injury or death by drowning, trauma, hypothermia or other causes.**
- 25.2. All participants are required to comply with any safety provisions as mandated under the Racing Rules of Sailing, the Australian Sailing Special Regulations Part 2 for Off The Beach Boats, and any Class Rules that may apply. The Squadron encourages and supports competitors who believe it is appropriate to exceed the above requirements (such as the wearing of helmets, body armour, impact vests, etc.) if they or their guardian believe that conditions and their personal circumstances warrant. All competitor's attention is drawn to the Risk Statement - Section 25 of the Sailing Instructions.

26. INSURANCE

- 26.1. Each participating boat shall be insured with valid third-party liability insurance with a minimum cover of \$10,000,000AUD per incident or the equivalent.

SI ATTACHMENT A



SI ATTACHMENT B

Most Consistent Skipper in a Junior Class

~ Harold Dean Memorial Trophy ~

Best Result at a National Regatta

~ Vidgen Perpetual Trophy ~

Most Improved Junior Skipper

~ T E Passey Trophy ~

Junior Sailor of the Year

~ Lady Stonehaven Challenge Cup ~

Youth Sailor of the Year

~ W A O'Hare Memorial Trophy ~

Squadron Champion for an Olympic Class

~ Astra Trophy ~

Longest Serving Member of a Season Points Winner

~ The Governor's Trophy ~

Most Consistent Skipper in a Senior Class

~ Callisto Cup – AM Greenfield Trophy ~

Most Consistent Contributor

~ Maurice Tilley Perpetual Trophy ~

Corinthian Yachtsman of the Year

~ Model Elliott ~

Best Performing Female Crew

~ Erica Blumson Trophy ~

Best Performance in an Olympic Class

~ John H Robinson Memorial Trophy ~

Keelboat Crew of the Year

~ E Sparkes Trophy ~

Sailor of the Year

~ Hardy Brothers Jewellers Trophy ~

SI ATTACHMENT C

SAFETY FIRST

As part of a national incentive by Australian Sailing, RQYS has adopted 'Whole of Fleet' Safety Audits appropriate to your race category.

So why extend equipment audits to all of our fleet?

The simple answer is compliance and good safety practice within the club. We have a Duty of Care to those participating in RQYS events and this extends beyond RQYS responsibility to boat owners and skippers.

Nationally, self audits have not, in the majority of cases, been completed to a satisfactory standard and it is our intention to engender into our sailors a culture of safety which benefits us all.

Chris Morgan, a division yacht owner and Queensland's Senior Sailing Australia Equipment Safety Auditor, has agreed to undertake the management of this program alongside the sailing office.

- All yacht owners and off the beach boats will be required to complete the appropriate Sailing Australia category form applicable to the club racing they intend to enter.
[Off the Beach Audit](#) (most recent version at May 2024)
[AS SR Safety Equipment Checklists](#)
- Owners will then be required to contact an RQYS / Class approved fleet auditor(s) to arrange an inspection and sign off.

It is not our intention to be heavy handed and disqualify boats that do not have an audited form on race day, however boats without a valid audit will not receive posted results until a valid audit is supplied, this is in the spirit of building a culture of safety in the club from the juniors up.

If you are interested in becoming an auditor please contact the Sailing Office or Local Class Association.

RQYS SAFETY INSPECTORS for Off the Beach Boat

ILCA

Greg Kemp

Jan Kemp

George Meikle

Optimist

Greg Kemp

Jan Kemp

Mick Patrick

RS Dinghy

Simon Tribe

Multihull

Colin Bilston

Andrew Warneke

Chris Davey

VXONE

Greg Kemp

Jan Kemp

FINN

Stuart Watson

Craig Padman

Flying 11

Mick Patrick

Windsurfing

Scott Luxton

9er

Simon Albrey

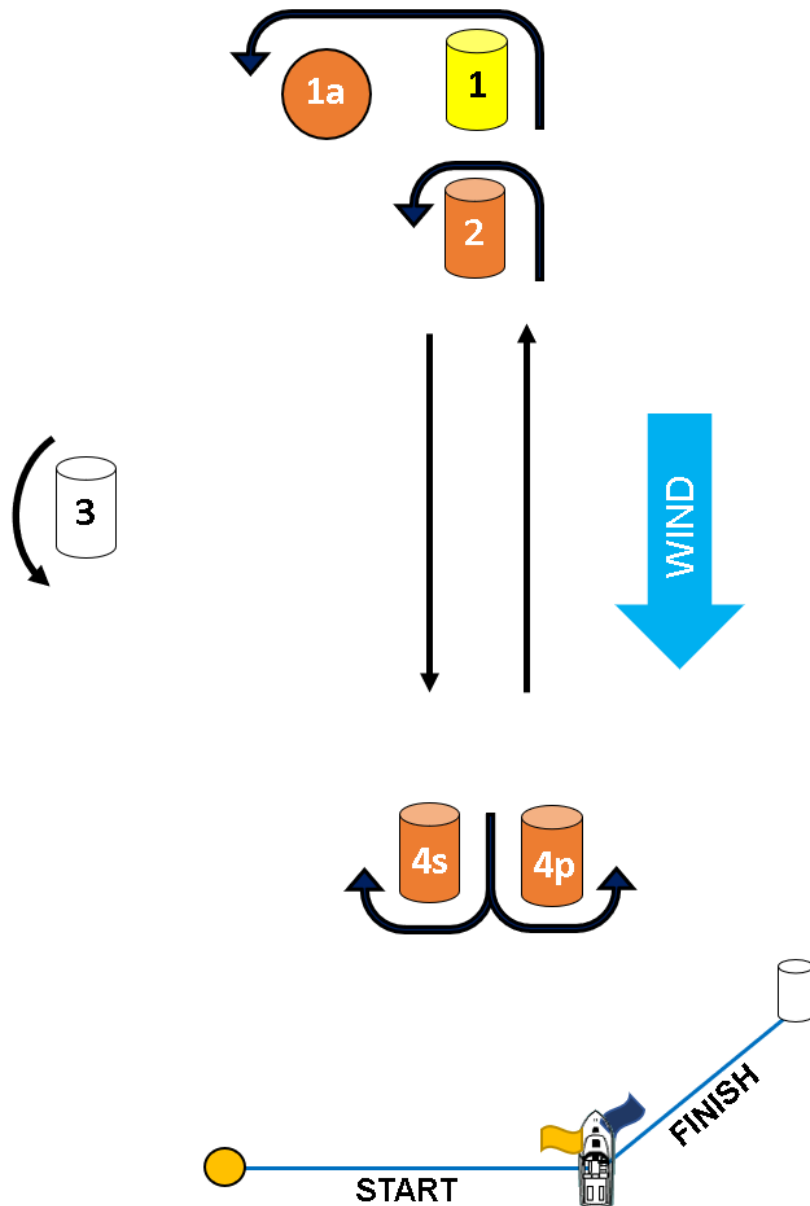
Mick Patrick

(Classes may approve other Inspectors)

SI ATTACHMENT D

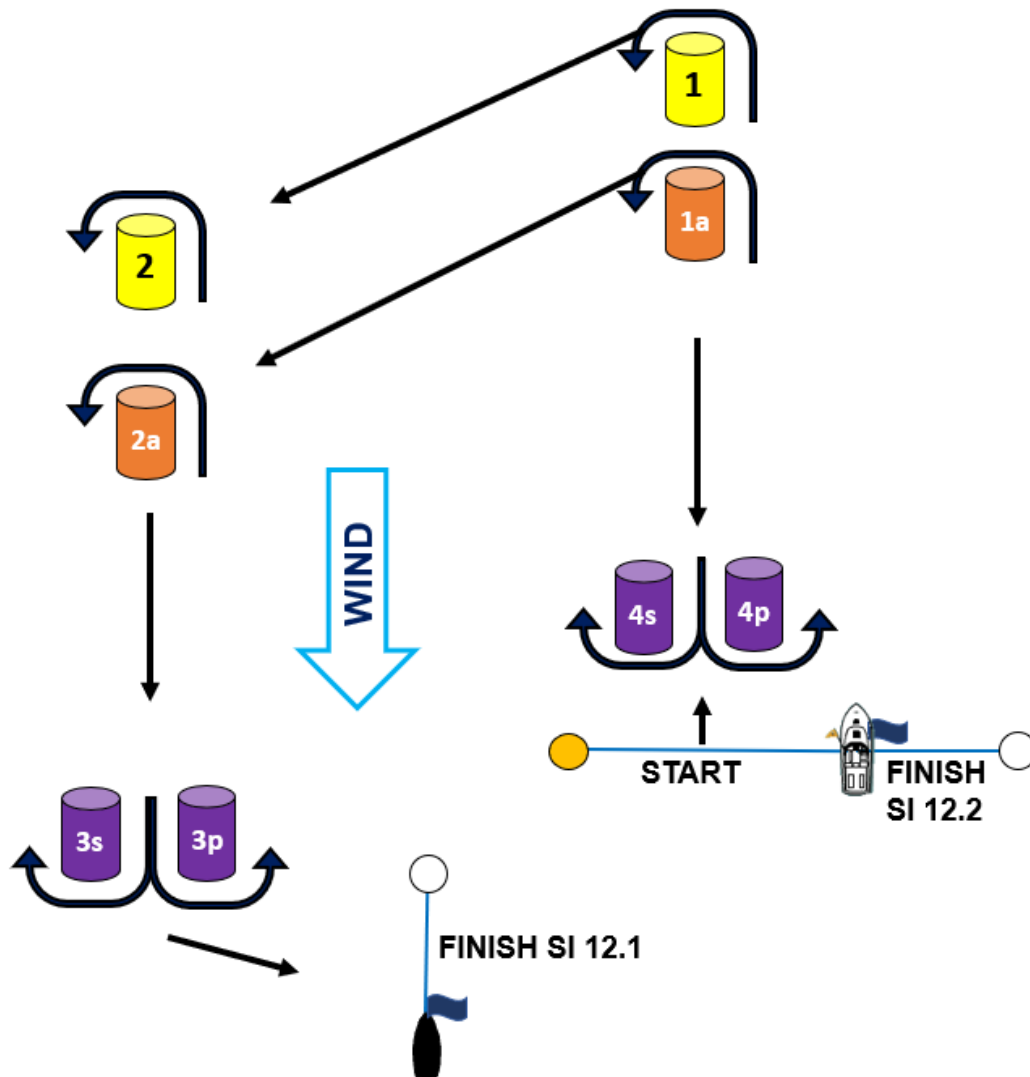
Northern Course

CODE	COURSE	MARKS DESCRIPTION
LA1	Start – 1 – 1a – 4p – Finish	Mark 1: Yellow Inflatable
LA2	Start – 1 – 1a – 4s/4p – 1 – 1a – 4p – Finish	Mark 2, 4s/4p: Orange Inflatables
LA3	Start – 1 – 1a – 4s/4p – 1 – 1a – 4s/4p – 1 – 1a – 4p – Finish	Start Pin & 1a: Orange teardrop
L1	Start – 2 – 4p – Finish	Mark 3 & Finish Pin: White Inflatable
L2	Start – 2 – 4s/4p – 2 – 4p – Finish	Change Mark: Mark 1: Green Inflatable Mark 2: Purple Inflatable
L3	Start – 2 – 4s/4p – 2 – 4s/4p – 2 – 4p – Finish	
T1	Start – 2 – 3 – 4p – Finish	
T2	Start – 2 – 3 – 4s/4p – 2 – 4p – Finish	
T3	Start – 2 – 3 – 4s/4p – 2 – 4s/4p – 2 – 3 – 4p – Finish	



Southern Course Trapezoid

CODE	COURSE	MARKS DESCRIPTION
I2	Start – 1 – 4s/4p – 1 – 2 – 3p – Finish	Marks 1, 2: Yellow Inflatables Marks 1a & 2a: Orange Inflatables 3s/3p & 4s/4p: Purple Inflatables Start pin: Orange Teardrops Finish pin: White Inflatable Change Mark: White Inflatable
I3	Start – 1 – 4s/4p – 1 – 4s/4p – 1 – 2 – 3p – Finish	
I2a	Start – 1a – 4s/4p – 1a – 2a – 3p – Finish	
I3a	Start – 1a – 4s/4p – 1a – 4s/4p – 1a – 2a – 3p – Finish	
O1	Start – 1 – 2 – 3p – Finish	
O2	Start – 1 – 2 – 3s/3p – 2 – 3p – Finish	
O3	Start – 1 – 2 – 3s/3p – 2 – 3s/3p – 2 – 3p – Finish	
O1a	Start – 1a – 2a – 3p – Finish	
O2a	Start – 1a – 2a – 3s/3p – 2a – 3p – Finish	
O3a	Start – 1a – 2a – 3s/3p – 2a – 3s/3p – 2a – 3p – Finish	



Southern Course Windward/Return

CODE	COURSE	MARKS DESCRIPTION
LA1	Start – 1 – 4p – Finish	Marks 1: Yellow Inflatable
LA2	Start – 1 – 4s/4p – 1 – 4p – Finish	Mark 2: Orange Inflatable
LA3	Start – 1 – 4s/4p – 1 – 4s/4p – 1 – 4p – Finish	Mark 4s/4p: Purple Inflatable
L1	Start – 2 – 4p – Finish	Start Pin: Orange Teardrop
L2	Start – 2 – 4s/4p – 2 – 4p – Finish	Mark 3 & Finish Pin: White Inflatable
L3	Start – 2 – 4s/4p – 2 – 4s/4p – 2 – 4p – Finish	Change Mark: Mark 1: White Inflatable Mark 2: Purple Inflatable
T1	Start – 1 – 3 – 4p – Finish	
T2	Start – 1 – 3 – 4s/4p – 1 – 4p – Finish	

