



Goodwill Cup Yacht Regatta

09 – 10 November 2024

SAILING INSTRUCTIONS (SI)

Organising Authority
ROYAL QUEENSLAND YACHT SQUADRON LTD
578 Royal Esplanade, Manly, QLD 4179

The notation '[NP]' in a rule of the sailing instructions (SIs) means that a boat may not protest another boat for breaking that rule. This changes RRS 60.1(a).

The notation '[DP]' in a rule of the sailing instructions (SI's) means that a protest committee can award a penalty less than disqualification (including no penalty) at their discretion. This changes Rule 64.2

1. RULES

- 1.1. The event is governed by the rules as defined in The Racing Rules of Sailing.
- 1.2. Appendix A 5.3 will Apply.
- 1.3. The Prescriptions and Special Regulations of Australia Sailing (AS) – Part 1 Category 5.
- 1.4. Where lifelines complying with AS SR Part 1 Section 3 Rule 3.12 have not been fitted, all crew while racing shall wear a visible personal floatation device as per AS SR Part 1 Section 5.
- 1.5. IRC, OMR and CBH rules shall apply to those yachts sailing under the relevant measurement rule.
- 1.6. The RQYS Constitution, Club Participation Rules House Rules and Codes of Conduct will apply (<https://www.rqys.com.au/policiesanddocuments/>).
- 1.7. The Skipper from each boat must fill in the SailSys “Crew List” of all sailors onboard, prior to the first warning for each scheduled day of racing (<https://app.sailsys.com.au/crew>).

2. CHANGES TO SAILING INSTRUCTIONS

- 2.1. Any change to the sailing instructions will be posted before 0900 on the day it will take effect, except that any change to the schedule will be posted by 2000 on the day before it will take effect.

3. COMMUNICATIONS WITH COMPETITORS

- 3.1. The online official notice board is located at <https://www.rqys.com.au/goodwill-cup-yacht-regatta-2024/>
- 3.2. Secondary to the Official noticeboard “instant messaging” system WhatsApp may be used to notify skippers of timely information, confirmation of days course, Protest Time limit etc. join the WhatsApp group at: <https://chat.whatsapp.com/HizbVHcOi3qGpyrQ1PS2Do>
- 3.3. [DP] All boats shall carry a VHF radio capable of communicating on channels 16, 72 & 77.
- 3.4. [DP] While racing, except in an emergency, a boat shall not make voice or data transmissions and shall not receive voice or data communication that is not available to all boats.

4. CODE OF CONDUCT

- 4.1 [DP] Competitors and support persons shall comply with reasonable requests from race officials.
- 4.2 [DP] Competitors and support persons shall handle any equipment or place advertising provided by the organizing authority with care, seamanship, in accordance with any instructions for its use and without interfering with its functionality.

5. SIGNALS MADE ASHORE

- 5.1. Signals made ashore will be displayed at the official flag pole located at the top of the Eastern Gangway of the Bill Kirby Docks.
- 5.2. When flag AP is displayed ashore, ‘1 minute’ is replaced with ‘not less than 60 minutes’ in Subseries Signals AP

6. SCHEDULE OF SUBSERIES

6.1.

DATE	EVENT	TIME / WARNING SIGNAL
Wednesday 06 th November	Entries Close	1600 hrs
Saturday 09 th November	Race 1	1100 hrs
	Sausage Sizzle	TBC Via WhatsApp Group
Sunday 10 th November	Race 2	1100 hrs
	Presentation & Sausage Sizzle	TBC Via WhatsApp Group

6.2. No warning signal will be made after 1300 hrs.

7. CLASS FLAGS

7.1. The class flags are:

FLEET	FLAG
Division 1 – Monohull	Numeral Pennant 1
Division 5 – Multihulls	Numeral Pennant 5

8. RACING AREA

8.1 SI Attachment A shows the location of the racing area.

9. COURSES

9.1. The diagram SI Attachment A shows the courses, including the approximate angles between legs, the order in which marks are to be passed, and the side on which each mark is to be left.

9.2. No later than the warning signal, the race committee signal vessel will display the course to be sailed and the approximate compass bearing of the first leg.

10. MARKS

10.1. Marks are as described in SI Attachment A.

11. THE START

11.1. The starting line is between a staff displaying an orange flag on the signal vessel at the starboard end and the course side of the port-end starting mark.

11.2. Boats whose warning signal has not been made shall avoid the starting area during the starting sequence for other races.

11.3. A boat that does not start within ten (10) minutes after her starting signal will be scored Did Not Start without a hearing. This changes RRS A5.1 and A5.2.

12. THE FINISH

12.1. The finishing line shall be between a staff displaying a blue flag on the finishing boat and the course side of the finishing mark.

13. PENALTY SYSTEM

13.1. RRS 44.1 is changed so that the Two-Turns Penalty is replaced by the One-Turn Penalty.

14. TIME LIMITS

14.1. Race Time Limit (see RRS 35), shall be 1600hrs.

15. HEARING REQUESTS

- 15.1. For each division, the protest time limit is 90 minutes after the last boat in that division finishes the last race of the day or the race committee signals no more racing today, whichever is later. The time will be posted on the official notice board.
- 15.2. Hearing request forms are available from the race office at the RQYS Sailing Office or Online at: <https://www.rqys.com.au/documents-auditing/>
- 15.3. Notices will be posted no later than 30 minutes after the protest time limit to inform competitors of hearings in which they are parties or named as witnesses. Hearings will be held at a time and place advised on the hearing notice.

16. SCORING

- 16.1. One (1) race is required to be completed to constitute a series.
- 16.2. A boat's series score shall be the total of her race scores.

17. SAFETY REGULATIONS

- 17.1. All boats shall SIGN ON by contacting the Race Committee vessel on VHF Channel 72 advising the name of the boat, sail number, number of persons on board (POB) and receive acknowledgement.
 - 17.1.1. Sign On shall be no race no earlier than the start boat going on station by displaying an orange flag
 - 17.1.2. No later than 15 minutes before the first warning signal.
- 17.2. All Maritime Queensland Aquatic Event conditions must be followed including:
 - 17.2.1. All Participating ships are to obey the gazetted speed limit in Manly Boat Harbour (6 knots).
- 17.3. No Spinnakers are to be flown in the Manly Harbour 6-knot area.
- 17.4. No sailing vessel shall berth on or impeded traffic to/from the RQYS fuel dock with out permission from the RQYS Sailing or Marina Office.
- 17.5. A boat that retires from a race shall notify the race committee at the first reasonable opportunity.

18. REPLACEMENT OF CREW OR EQUIPMENT

- 18.1. Boats intending to race with a sail number other than that stipulated on their entry shall advise the RQYS sailing office in writing of the change, prior to racing. Failure to comply shall result in the boat being scored DNC for all races on that day. This changes RRS 63.1, A4 and A5.

19. EQUIPMENT AND MEASUREMENT CHECKS

- 19.1. A boat or equipment may be inspected at any time for compliance with the class rules, notice of race and sailing instructions.
- 19.2. [DP] When instructed by a race official on the water, a boat shall proceed to a designated area for inspection.

20. OFFICIAL VESSELS

- 20.1. Official vessels will be identified by display of a white flag with black letters 'RC' or red 'MEDIA'.

21. BERTHING

- 21.1. [DP] Boats shall be kept in their assigned places while in the harbour.
- 21.2. Restrictions may be placed on where vessels may be stored or rigged by the RQYS Sailing or Marina office.
- 21.3. For RQYS Marina Berths, please contact the RQYS Marina Office on 3396 8666 during business hours, **Berthing is limited early booking is essential.**

22. HAUL-OUT RESTRICTIONS

- 22.1. [DP] Boats shall not be hauled out during the event except with and according to the terms of prior written permission of the race committee.

23. DIVING EQUIPMENT AND PLASTIC POOLS

- 23.1. Underwater breathing apparatus and plastic pools or their equivalent shall not be used around keelboats between the preparatory signal of the first Subseries and the end of the last race of the event.

24. PRIZES

- 24.1. The Goodwill Cup will be presented to 1st overall in Monohull Division IRC.
- 24.2. The Lord Brassey Cup will be presented to 1st overall in Monohull Division PHS.
- 24.3. WDM Taylor Memorial Trophy will be presented to 1st overall in Monohull Subseries 2 PHS.
- 24.4. Prizes will be awarded where more than five (5) boats are entered for:
- 24.4.1. Overall Monohull PHS 1st, 2nd and 3rd.
 - 24.4.2. Overall Monohull IRC 1st, 2nd and 3rd.
 - 24.4.3. Overall Monohull CBH 1st, 2nd and 3rd.
 - 24.4.4. Overall Multihull OMR 1st, 2nd and 3rd.

 - 24.4.5. Overall Monohull Subseries 1 PHS 1st, 2nd & 3rd.
 - 24.4.6. Overall Monohull Subseries 1 IRC 1st, 2nd & 3rd.
 - 24.4.7. Overall Monohull Subseries 1 CBH 1st, 2nd & 3rd.

 - 24.4.8. Overall Monohull Subseries 2 PHS 1st, 2nd & 3rd.
 - 24.4.9. Overall Monohull Subseries 2 IRC 1st, 2nd & 3rd.
 - 24.4.10. Overall Monohull Subseries 2 CBH 1st, 2nd & 3rd.

 - 24.4.11. Overall 1st, 2nd & 3rd Inter-Club Teams on PHS:
 - Teams must consist of 3 boats from the same club. Where the number of yachts in the fleet is not a multiple of three, the last team will then consist of the remaining one or two boats.
 - Boats who do not nominate a team will be randomly placed in a team with other boats from the same club.
- 24.5. Other prizes may be awarded by the Organising Authority.

25. RISK STATEMENT

- 25.1. RRS 3 states: 'The responsibility for a boat's decision to participate in a Subseries or to continue to Subseries is hers alone.' By participating in this event each competitor agrees and acknowledges that sailing is a potentially dangerous activity with inherent risks. These risks include strong winds and rough seas, sudden changes in weather, failure of equipment, boat handling errors, poor seamanship by other boats, loss of balance on an unstable platform and fatigue resulting in increased risk of injury. **Inherent in the sport of sailing is the risk of permanent, catastrophic injury or death by drowning, trauma, hypothermia or other causes.**
- 25.2. All participants are required to comply with any safety provisions as mandated under the Racing Rules of Sailing, the Australian Sailing Special Regulations Part 2 for Off The Beach Boats, and any Class Rules that may apply. The Squadron encourages and supports competitors who believe it is appropriate to exceed the above requirements (such as the wearing of helmets, body armor, impact vests, etc.) if they or their guardian believe that conditions and their personal circumstances warrant. All competitor's attention is drawn to the Risk Statement - 25 of the Sailing Instructions.

26. INSURANCE

- 26.1. Each participating boat shall be insured with valid third-party liability insurance with a minimum cover of \$10,000,000AUD per incident or the equivalent.

27. FURTHR INFORMATION

- 27.1. For further information please contact:
RQYS Sailing: 07 3396 8666 / sailing@rqys.com.au
578 Royal Esplanade MANLY QLD 4179 AUS
www.rqys.com.au

SI ATTACHMENT A

Saturday

Start – [Mark X] – W (P) – N (S) – S (P) – E (P) – S (P) – E (P) – W (S) – Finish (approx. 16nm)

Sunday

Start – [Mark X] – W (S) – S (P) – N (S) – E (S) – W (S) – N (S) – W (S) – Finish (approx. 17 nm)

MARK COORDINATES

Mark W - 27 26.55 S 153 14.80 E

Mark N - 27 24.73 S 153 15.83 E

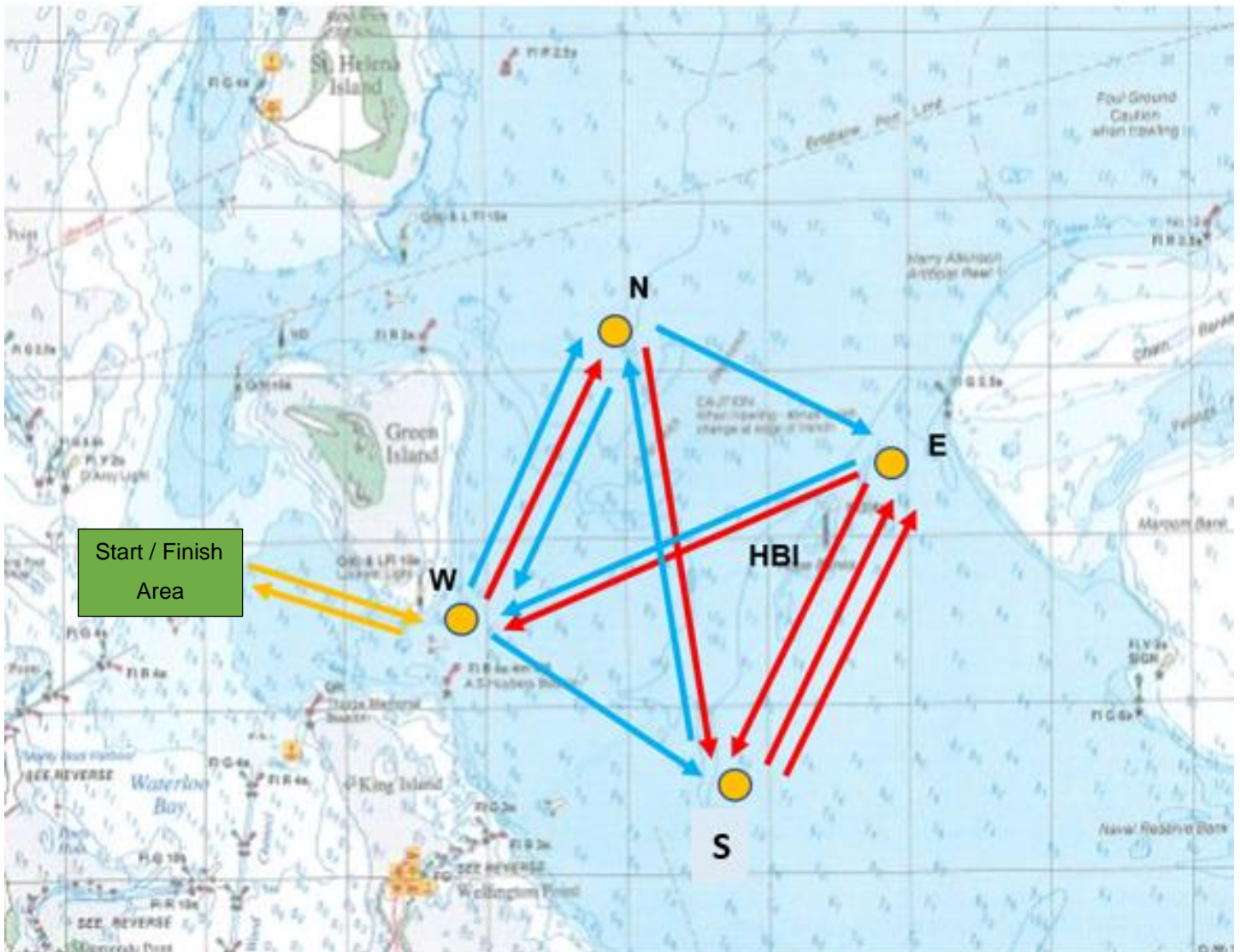
Mark S - 27 27.70 S 153 16.70 E

Mark E - 27 25.76 S 153 17.98 E

MARKS

The course marks will be Orange Inflatables

The X Mark will be an Orange Teardrop



SI ATTACHMENT B

EMERGENCY CONTACTS

Emergencies	000	
RQYS Sailing Manager	0424 101 732	
Royal Queensland Yacht Squadron	(07) 3396 8666	578 Royal Esplanade, Manly QLD
Manly Coast Guard	(07) 3396 5911	40 Trafalgar St, Manly QLD
Wynnum Police	(07) 3308 8100	82 Pine St, Wynnum QLD
Wynnum Fire & Rescue	(07) 3396 3297	2006 Wynnum Rd, Wynnum West
Brisbane Water Police	(07) 3895 0333	2 Howard Smith Dr, Port of Brisbane

Location, access & communication of Next of Kin Details

Sailing Office & SailSys Databases including information gathered from regatta registrations and/or indemnity forms.

Location of Nearest Emergency Medical Facilities

Redlands Hospital	(07) 3488 3111	21 Weippin St, Cleveland QLD
-------------------	----------------	------------------------------

Location of Nearest Medical Facilities

Wynnum Family Health Service	(07) 3893 0093	116 Edith St, Wynnum QLD
Doctors on Manly Road	(07) 3348 6111	12 Manly Rd, Manly QLD
Silky Oaks Medical Practice	(07) 3396 9855	218 Manly Rd, Manly QLD
Dental On Cambridge	(07) 3348 6661	4/99 Cambridge Parade, Manly QLD

LOCAL SERVICES

Sail Maker

North Sails
1/264 Tingal Rd, Wynnum QLD
3396 5822

Hood Sails
181 Wynnum Esplanade, Wynnum QLD
0419 799 958

Ullman Sails
112 Glenora St, Wynnum QLD
(07) 3348 7245

Chandlery

Muir Marine
453 Esplanade, Manly QLD
(07) 3396 9988

Road Tech Marine
20 Redland Bay Rd, Capalaba QLD
(07) 3914 9543

Boat Building / Repairs – Located at RQYS

JSA Marine
(07) 3348 5682

David Glenn Boat Building
0412 878 144

Physio

Manly Physiotherapy & Pilates
3/443 Esplanade, Manly QLD
(07) 3396 8137

Bounce Physio Birkdale
190 Birkdale Rd, Birkdale QLD
(07) 3822 2122

Pharmacy

Manly Village Pharmacy
9/222 Stratton Terrace, Manly QLD
(07) 3396 8999

Groceries

IGA Manly Village
Cnr Stratton Tce & Cambridge Parade
(07) 3396 1980

Woolworths Wynnum Central
145 Florence St, Wynnum QLD
(07) 3513 4416

Butcher

The Local Butcher
222 Stratton Terrace, Manly QLD
(07) 3396 2195

Bakery

Manly Bakery
222 Stratton Terrace, Manly QLD
(07) 3396 5688

Accommodation

[Manly Marine Cover Motel](#)

Located on the Grounds of RQYS
(07) 3348 1000

Limited Camping Facilities at RQYS

[Limited camping MAY be available](#)
(07) 3396 8666

[The Manly Hotel](#)

54 Cambridge Parade, Manly QLD
(07) 3249 5999

[Waterloo Bay Hotel](#)

75 Berrima St, Wynnum QLD
(07) 3893 2344

[Pelican's Nestle Inn](#)

149 Wynnum Esplanade, Wynnum QLD
(07) 3396 3214

[Wynnum Anchor Motel](#)

14 Adam St, Wynnum QLD
(07) 3396 3037

LOCAL WEATHER TIDE

Local Weather:

The RQYS Weather Station can be found at:

<https://www.rqys.com.au/weather-station/>

The Weather Station records from above the club Bay Lookout.

BOM: Radar: <http://www.bom.gov.au/products/IDR663.loop.shtml>

Marine Forecast:

<http://www.bom.gov.au/qld/forecasts/moreton-bay.shtml>

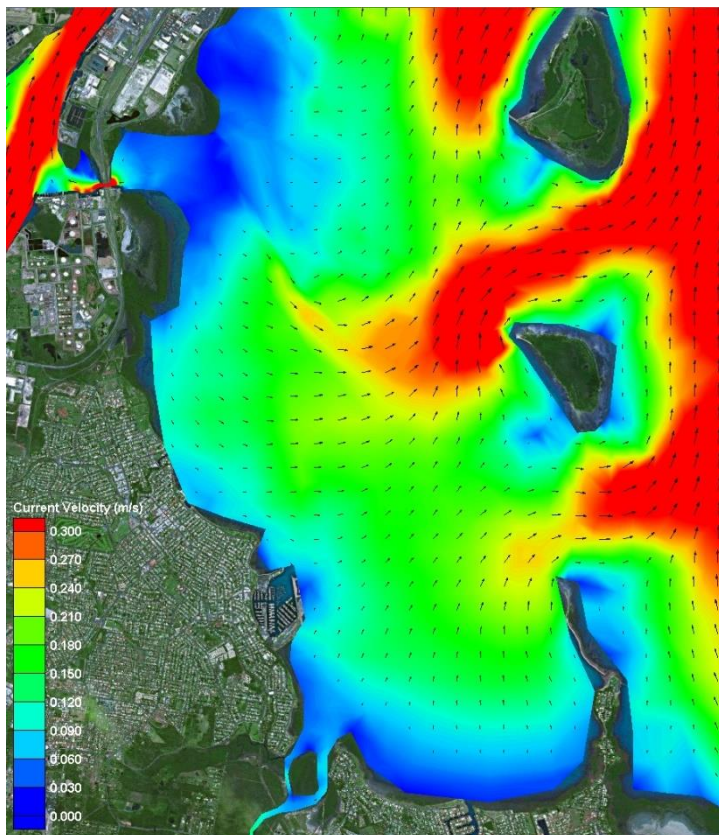
Other Popular forecasts:

Predict Wind: <https://forecast.predictwind.com/table/>

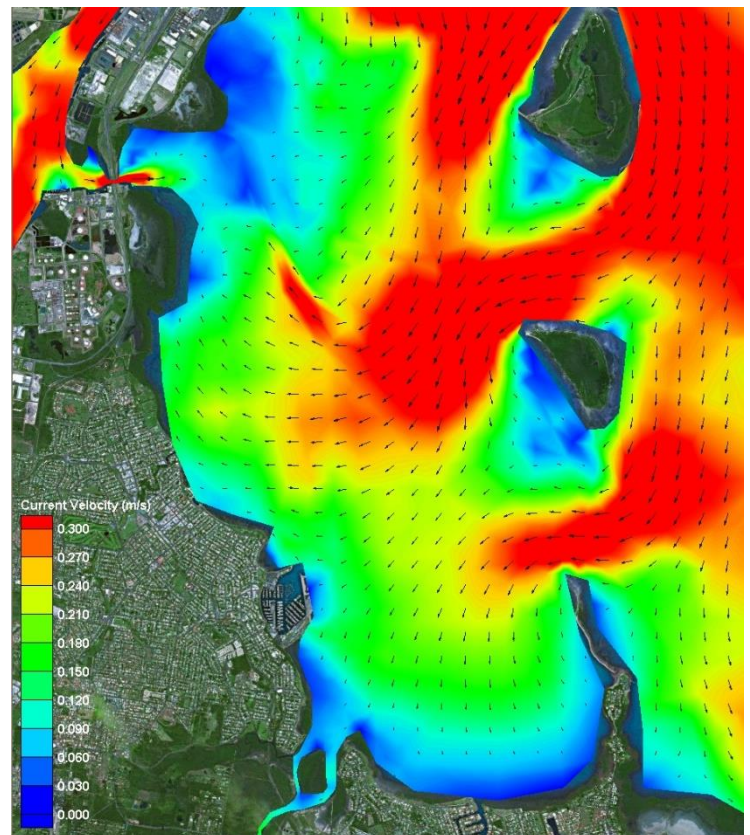
Seabreeze: <https://www.seabreeze.com.au/weather/wind-forecast/brisbane>

WillyWeather: <https://wind.willyweather.com.au/qld/brisbane/brisbane.html>

Waterloo Bay Ebb



Waterloo Bay Flood



NEARBY MANLY HARBOUR VILLAGE SERVICES



900m / 5-15min

INTERNATIONAL & DOMESTIC ROYS ACCESS

- 20min drive
- Manly Station: 15km
- Brisbane CBD: 30min

578 ROYAL ESPLANADE, MANLY

ROY'S IS AN INTERNATIONALLY-ACCREDITED MARINA



ROYS RECEPTION	PARKING - PUBLIC / Motel only	PARKING - ROYS MEMBERS only	ROYS MARINA OFFICE	STORAGE
AUDITORIUM	MANLY MARINA COVE MOTEL	SAILING OFFICE / ACADEMY	MARINA TravelIt	TOILETS & Showers
GIRIS ROOM	OMTS & Training offices	ROYS Launching ramp	ROODBERG Trailer-transporter	LAUNDRY Facilities
FLAGS Function room	VESSEL Sales & Brokers	DINGHY Storage	BOATYARD Work area	KIDS' Playground
THE BOARDWALK BISTRO	FUEL Wharf (PUBLIC 24/7)	KAYAK Rack storage	WORK Area berths	FITNESS Centre
COFFEE SHOP / Snacks	FUEL Bowser (Members only)	VESSEL Storage (Mono/Multi-hull)	Waste / Recycling collection point	BBQ Facilities (Members only)
ROYS Bar	WINDSURFING Centre	CAMPSITE (Regatta visitors only)	MARINE TRADES & Services	PICNIC Benches



ROYAL QUEENSLAND YACHT SQUADRON – THE SAILING GATEWAY TO MORETON BAY

Gold Coast ← 75km

Brisbane CBD (30 min drive)

Sunshine Coast → 100km

Manly Station (50 min train)

Wynnum Central (20 min train)

BNE International & Domestic (20 min drive)

Brisbane Volunteer Coastguard

Protected migratory bird roost

Manly Harbour Village Amenities:

- Australian Sailing Office
- Manly Marina Cove Motel
- Clubhouse, coffeeshop & bistro
- Function rooms
- Main launching ramp & rigging lawns
- Marina & Sailing Offices
- Boat maintenance & chandlery
- Showers / laundry
- Eastern beach Windsurfing
- Boat storage
- Bayview Lookout Showers / laundry

Waterloo Bay

ROYAL QUEENSLAND YACHT SQUADRON

– Founded 1885 –

rqys.com.au

[/RQYS.Manly](https://www.facebook.com/RQYS.Manly) | [royal_qld_yacht_squadron](https://www.instagram.com/royal_qld_yacht_squadron)

Australian Sailing | **GOLD ANCHOR** | **Clean Marina** | **BIA** | **2021** | **2022** | **2023**