



# **2024/25 ILCA METROPOLITAN CHAMPIONSHIPS**

**30<sup>th</sup> November and 1<sup>st</sup> Dec 2024**

## **SAILING INSTRUCTIONS (SI)**

for

**ILCA7, ILCA6 and ILCA4 Divisions**

Open to

**Youth, Open and Masters Sailors**

**ORGANISING AUTHORITY**

**Royal Queensland Yacht Squadron**



On behalf of  
**ILCA Queensland (QILCA)**

*The notation '[NP]' in a rule of the sailing instructions (SIs) means that a boat may not protest another boat for breaking that rule. This changes RRS 60.1(a).*

*The notation '[DP]' in a rule of the sailing instructions (SI's) means that a protest committee can award a penalty less than disqualification (including no penalty) at their discretion. This changes Rule 64.2*

## **1. RULES**

- 1.1. The event is governed by the rules as defined in The Racing Rules of Sailing.
- 1.2. RRS Appendix T – Arbitration will apply.
- 1.3. The rules and by-laws of the International Laser Class Association (ILCA) apply.

## **2. CHANGES TO SAILING INSTRUCTIONS**

- 2.1. Any change to the sailing instructions will be posted before 0900 on the day it will take effect, except that any change to the schedule of races will be posted by 2000 on the day before it will take effect.

## **3. COMMUNICATIONS WITH COMPETITORS**

- 3.1. The online official notice board is located at <https://www.rqys.com.au/qilca-metropolitan-championships-2024/>
- 3.2. [DP] While racing, except in an emergency, a boat shall not make voice or data transmissions and shall not receive voice or data communication that is not available to all boats.

## **4. CODE OF CONDUCT**

- 4.1 [DP] Competitors and support persons shall comply with reasonable requests from race officials.
- 4.2 [DP] Competitors and support persons shall handle any equipment or place advertising provided by the organizing authority with care, seamanship, in accordance with any instructions for its use and without interfering with its functionality.

## **5. SIGNALS MADE ASHORE**

- 5.1. Signals made ashore will be displayed at the official flagpole located at the top of the Eastern Gangway of the Bill Kirby Docks.
- 5.2. When flag AP is displayed ashore, '1 minute' is replaced with 'not less than 45 minutes' in Race Signals AP.

## **6. SCHEDULE OF RACES**

- 6.1.

DATE	ACTIVITY	TIME
Saturday 30 November 2024	Competitor Briefing	1200 hrs
	Race 1	First Warning not before 1330 hrs
	Race 2	Following Race 1
Sunday 1 December 2024	Race 3, 4 and 5	First Warning 1100 hrs Races back to back
	Presentation and Sausage Sizzle	ASAP after Sailing

- 6.2. On the last scheduled day of racing no warning signal will be made after 1500hrs.

## **7. CLASS FLAGS**

- 7.1. The class flags are:
  - 7.1.1. ILCA 4 Yellow flag with Red Class Insignia.
  - 7.1.2. ILCA 6 Green flag with Red Class Insignia.
  - 7.1.3. ILCA 7 White flag with Red Class Insignia.

## **8. RACING AREA**

- 8.1 SI Attachment A shows the location of the racing area.

## **9. COURSES**

- 9.1. The courses to be sailed are shown in SI Attachment B, including the approximate angles between legs, the order in which marks are to be passed, and the side on which each mark is to be left.
  - 9.1.1. Racing on Saturday (30/11/2024) will be combined with RQYS OTB Club Racing.
- 9.2. No later than the warning signal, the race committee signal vessel will display the course to be sailed and the approximate compass bearing of the first leg.

## **10. MARKS**

- 10.1. Marks are as described in SI Attachment B.

## **11. THE START**

- 11.1. The starting line is between a staff displaying an orange flag on the signal vessel at the starboard end and the course side of the port-end starting mark.
- 11.2. Boats whose warning signal has not been made shall avoid the starting area during the starting sequence for other races.
- 11.3. A boat that does not start within four (4) minutes after her starting signal will be scored Did Not Start without a hearing. This changes RRS A5.1 and A5.2.

## **12. THE FINISH**

- 12.1. The finishing line is between a staff displaying a blue flag on the finishing boat at the starboard end and the course side of the port end finishing mark.
- 12.2. For the trapezoid course, if the finishing boat downwind of the start vessel is not used, the finishing line will be between a staff displaying a blue flag on the start vessel at the port-end and the course side of the starboard-end finishing mark.

## **13. CHANGE OF THE NEXT LEG OF THE COURSE**

- 13.1. When Sailing Courses I2a, L3a, O1, O2, O3, the race committee will move the original mark or the finishing line to a new position. All other courses to change the next leg of the course, the race committee will lay a new mark (or move the finishing line) and remove the original mark as soon as practicable. When in a subsequent change a new mark is replaced, it will be replaced by an original mark.

#### **14. TIME LIMITS AND TARGET TIMES**

- 14.1. The Mark 1 Time Limit, Race Time Limit (see RRS 35), and the Finishing Window are shown in the table below.

Division	Race Target Time	Race Time Limit	Finishing Window
ILCA 4	40 minutes	60 minutes	15 minutes
ILCA 6	40 minutes	60 minutes	15 minutes
ILCA 7	40 minutes	60 minutes	15 minutes

- 14.2. The Finishing Window is the time for boats to finish after the first boat in that division sails the course and finishes. Boats failing to finish within the Finishing Window, and not subsequently retiring, penalized or given redress, will be scored Time Limit Expired (TLE) without a hearing. A boat scored TLE shall be scored points for the finishing place one more than the points scored by the last boat that finished within the Finishing Window. This changes RRS 35, A5.1, A5.2 and A10.
- 14.3. Failure to meet the Target Time will not be grounds for redress. This changes RRS 62.1(a).

#### **15. HEARING REQUESTS**

- 15.1. For each class, the protest time limit is 60 minutes after the last boat in that class finishes the last race of the day or the race committee signals no more racing today, whichever is later. The time will be posted on the official notice board.
- 15.2. Hearing request forms are available from the race office or online at <https://www.rqys.com.au/documents-auditing/>.
- 15.3. Notices will be posted no later than 30 minutes after the protest time limit to inform competitors of hearings in which they are parties or named as witnesses. Hearings will be held at a time and place advised on the hearing notice.

#### **16. SCORING**

- 16.1. Five races are scheduled for this series.
- 16.2. Two (2) races are required to be completed to constitute a series
- 16.2.1. When fewer than four (4) races have been completed, a boat's series score will be the total of her race scores
- 16.2.2. When four (4) or five (5) races have been completed, a boat's series score will be the total of her race scores excluding her worst score

## **17. SAFETY REGULATIONS**

- 17.1. A boat that retires from a race shall notify the race committee at the first reasonable opportunity.
- 17.2. All skippers shall SIGN ON before racing each day and SIGN OFF at the earliest possible time after the completion of racing (but not later than the end of protest time). The sign on will be available near the Sailing Office & Rigging Lawn 2.
- 17.3. All Maritime Queensland Aquatic Event conditions must be followed including:
  - 17.3.1. All Participating ships are not to impede power driven vessels traversing Manly Boat Harbour and associated channels.
  - 17.3.2. All Participating ships are to obey the gazetted speed limit in Manly Boat Harbour (6 knots).
- 17.4. No Spinnakers are to be flown in the Manly Harbour 6-knot area.
- 17.5. No sailing vessel shall berth on or impeded traffic to/from the RQYS fuel dock with out permission from the RQYS Sailing or Marina Office.
- 17.6. [SP] Failure to SIGN ON shall result in that boat being penalised three (3) points for the first race of the session (but not worse than DNF). Failure to SIGN OFF shall result in that boat being penalised three (3) points for the last race of the session (but not worse than DNF). Penalties will be applied without a hearing.

## **18. REPLACEMENT OF CREW OR EQUIPMENT**

- 18.1. All competitors shall use only one hull, sail, mast and boom, centreboard and rudder during the regatta. If damage is sustained within racing, a competitor may fill out and lodge a Substitution of Equipment Form to receive approval by the Race Committee to change equipment.

## **19. EQUIPMENT AND MEASUREMENT CHECKS**

- 19.1. A boat or equipment may be inspected at any time for compliance with the class rules, notice of race and sailing instructions.
- 19.2. [DP] When instructed by a race official on the water, a boat shall proceed to a designated area for inspection.

## **20. OFFICIAL VESSELS**

- 20.1. Official vessels will be identified by display of a white flag with black letters 'RC' or red 'MEDIA'.

## **21. [DP] SUPPORT TEAMS**

- 21.1. Team leaders, coaches and other support persons shall stay outside areas where boats are racing from the time of the preparatory signal for the first start until all boats have finished or retired or the race committee signals a postponement, general recall or abandonment.

## **22. TRASH DISPOSAL**

- 22.1. Trash may be placed aboard official or support person vessels.

## **23. [DP][NP] BERTHING**

- 23.1. Restrictions may be placed on where vessels may be stored or rigged by the RQYS Sailing or Marina office.
- 23.2. Boats may only be stored on the RQYS rigging lawn for the duration of the regatta & 24hrs before/after the regatta, unless otherwise approved by the OA.
  - 23.2.1. Competitors arriving more than a week prior to the commencement of the regatta should contact RQYS Marina to make appropriate arrangements for access and storage. Boats can be stored on the Main Rigging Lawn, for the duration of the regatta. RQYS Marina: [marinaadmin@rqys.com.au](mailto:marinaadmin@rqys.com.au) | +61 7 3393 3554
- 23.3. No tie down restraints may penetrate the ground deeper than 300mm due to lawn irrigation systems.

## **24. PRIZES**

- 24.1. Perpetual Trophies and other prizes will be awarded in accordance with ILCA rules.

## **25. RISK STATEMENT**

- 25.1. RRS 3 states: 'The responsibility for a boat's decision to participate in a race or to continue to race is hers alone.' By participating in this event each competitor agrees and acknowledges that sailing is a potentially dangerous activity with inherent risks. These risks include strong winds and rough seas, sudden changes in weather, failure of equipment, boat handling errors, poor seamanship by other boats, loss of balance on an unstable platform and fatigue resulting in increased risk of injury. **Inherent in the sport of sailing is the risk of permanent, catastrophic injury or death by drowning, trauma, hypothermia or other causes.**
- 25.2. All participants are required to comply with any safety provisions as mandated under the Racing Rules of Sailing, the Australian Sailing Special Regulations Part 2 for Off The Beach Boats, and any Class Rules that may apply. The Squadron encourages and supports competitors who believe it is appropriate to exceed the above requirements (such as the wearing of helmets, body armour, impact vests, etc.) if they or their guardian believe that conditions and their personal circumstances warrant. All competitor's attention is drawn to the Risk Statement - Section 26 of the Sailing Instructions.

## **26. INSURANCE**

- 26.1. Each participating boat shall be insured with valid third-party liability insurance with a minimum cover of \$10,000,000AUD per incident or the equivalent.

## **27. FURTHER INFORMATION**

- 27.1. For further information please contact:

### **Queensland ILCA Association (QILCA)**

Michael Wilson [wilsomichael58@gmail.com](mailto:wilsomichael58@gmail.com) or 0417758859

### **Royal Queensland Yacht Squadron (RQYS)**

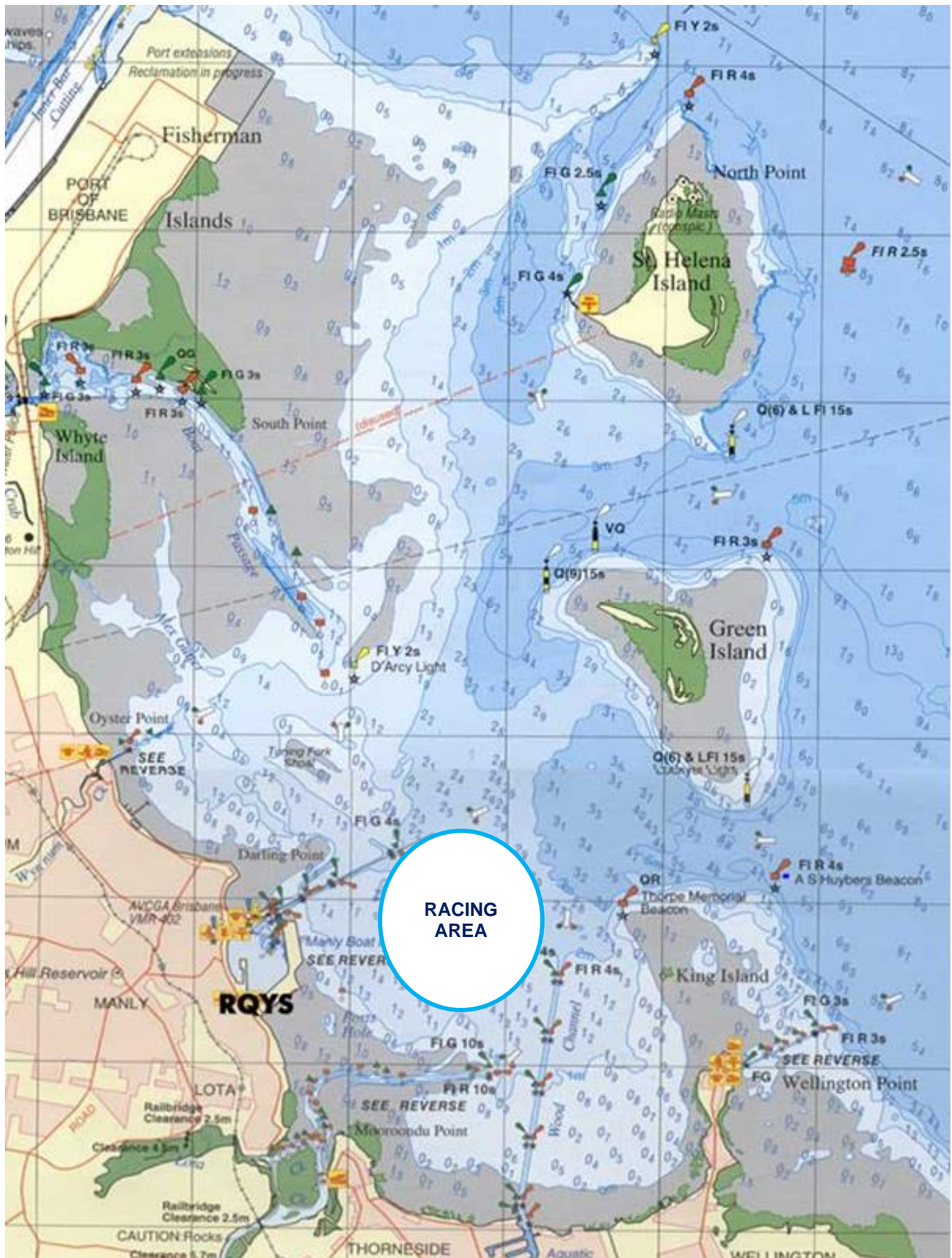
Sailing Office: [sailing@rqys.com.au](mailto:sailing@rqys.com.au) / 07 3396 8666

578 Royal Esplanade MANLY QLD 4179 AUS

[www.rqys.com.au](http://www.rqys.com.au)

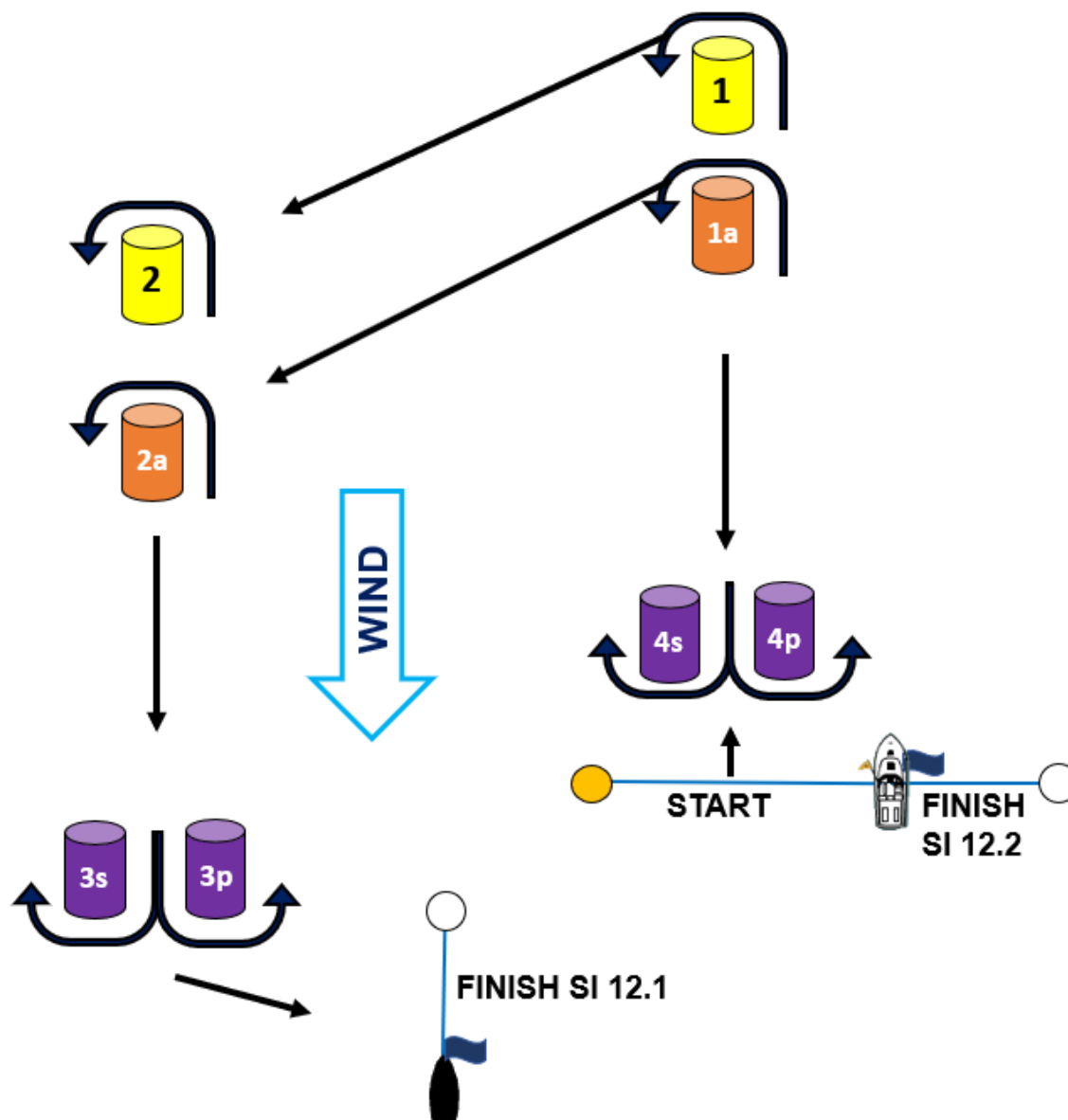


## SI ATTACHMENT A



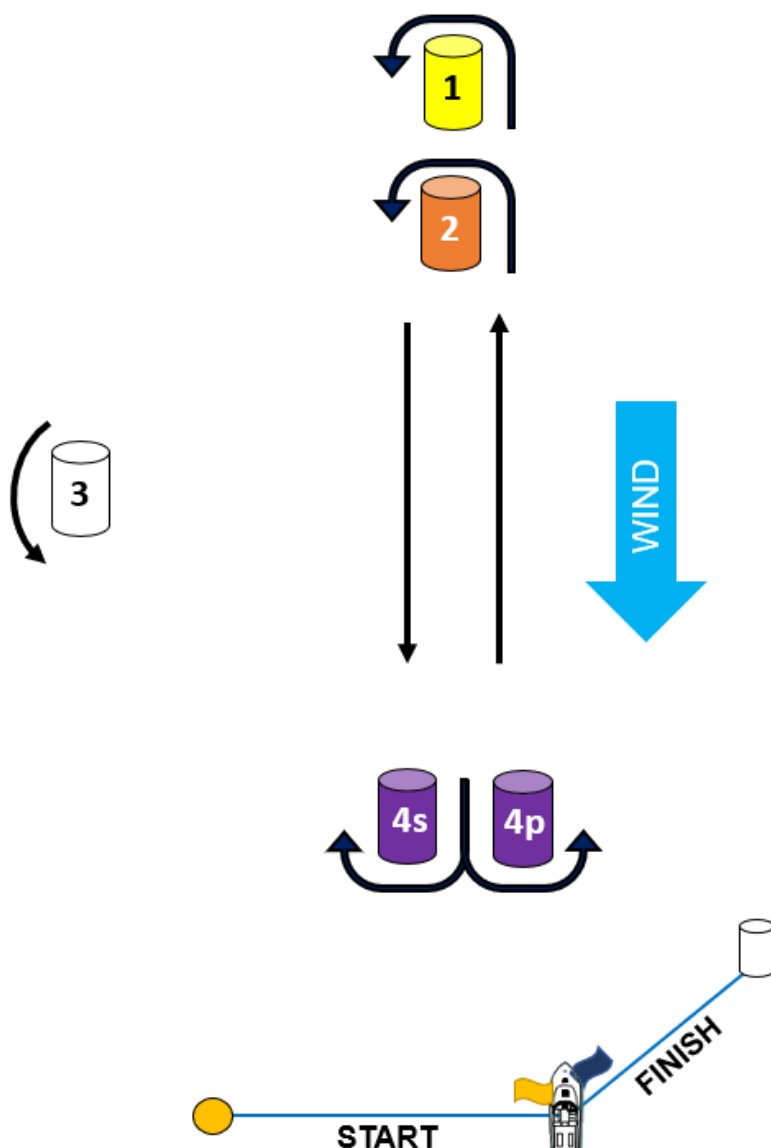
## SI ATTACHMENT B

CODE	COURSE	MARKS DESCRIPTION
<b>I2</b>	Start – 1 – 4s/4p – 1 – 2 – 3p – Finish	<b>Marks 1, 2:</b> Yellow Inflatables <b>Marks 1a &amp; 2a:</b> Orange Inflatables <b>3s/3p &amp; 4s/4p:</b> Purple Inflatables <b>Start pin:</b> Orange Teardrops <b>Finish pin:</b> White Inflatable <b>Change Mark:</b> White Inflatable
<b>I3</b>	Start – 1 – 4s/4p – 1 – 4s/4p – 1 – 2 – 3p – Finish	
<b>I2a</b>	Start – 1a – 4s/4p – 1a – 2a – 3p – Finish	
<b>I3a</b>	Start – 1a – 4s/4p – 1a – 4s/4p – 1a – 2a – 3p – Finish	
<b>O1</b>	Start – 1 – 2 – 3p – Finish	
<b>O2</b>	Start – 1 – 2 – 3s/3p – 2 – 3p – Finish	
<b>O3</b>	Start – 1 – 2 – 3s/3p – 2 – 3s/3p – 2 – 3p – Finish	
<b>O1a</b>	Start – 1a – 2a – 3p – Finish	
<b>O2a</b>	Start – 1a – 2a – 3s/3p – 2a – 3p – Finish	
<b>O3a</b>	Start – 1a – 2a – 3s/3p – 2a – 3s/3p – 2a – 3p – Finish	





CODE	COURSE	MARKS DESCRIPTION
LA1	Start – 1 – 4p – Finish	<b>Marks 1:</b> Yellow Inflatable
LA2	Start – 1 – 4s/4p – 1 – 4p – Finish	<b>Mark 2:</b> Orange Inflatables
LA3	Start – 1 – 4s/4p – 1 – 4s/4p – 1 – 4p – Finish	<b>Mark 4s/4p:</b> Purple Inflatable
L1	Start – 2 – 4p – Finish	<b>Start Pin:</b> Orange Teardrop
L2	Start – 2 – 4s/4p – 2 – 4p – Finish	<b>Mark 3 &amp; Finish Pin:</b> White Inflatable
L3	Start – 2 – 4s/4p – 2 – 4s/4p – 2 – 4p – Finish	<b>Change Mark:</b> <b>Mark 1:</b> White Inflatable <b>Mark 2:</b> Purple Inflatable
T1	Start – 1 – 3 – 4p – Finish	
T2	Start – 1 – 3 – 4s/4p – 1 – 4p – Finish	



## SI ATTACHMENT C – LOCATION INFORMATION

### EMERGENCY CONTACTS

---

Emergencies	000	
RQYS Sailing Manager	0424 101 732	
Royal Queensland Yacht Squadron	(07) 3396 8666	578 Royal Esplanade, Manly QLD
Manly Coast Guard	(07) 3396 5911	40 Trafalgar St, Manly QLD
Wynnum Police	(07) 3308 8100	82 Pine St, Wynnum QLD
Wynnum Fire & Rescue	(07) 3396 3297	2006 Wynnum Rd, Wynnum West
Brisbane Water Police	(07) 3895 0333	2 Howard Smith Dr, Port of Brisbane

#### Location, access & communication of Next of Kin Details

Sailing Office & SailSys Databases including information gathered from regatta registrations and/or indemnity forms.

#### Location of Nearest Emergency Medical Facilities

Redlands Hospital	(07) 3488 3111	21 Weippin St, Cleveland QLD
-------------------	----------------	------------------------------

#### Location of Nearest Medical Facilities

Wynnum Family Health Service	(07) 3893 0093	116 Edith St, Wynnum QLD
Doctors on Manly Road	(07) 3348 6111	12 Manly Rd, Manly QLD
Silky Oaks Medical Practice	(07) 3396 9855	218 Manly Rd, Manly QLD
Dental On Cambridge	(07) 3348 6661	4/99 Cambridge Parade, Manly QLD

## LOCAL SERVICES

### Sail Maker

#### North Sails

1/264 Tingal Rd, Wynnum QLD  
3396 5822

#### Hood Sails

181 Wynnum Esplanade, Wynnum QLD  
0419 799 958

#### Ullman Sails

112 Glenora St, Wynnum QLD  
(07) 3348 7245

### Chandlery

#### Muir Marine

453 Esplanade, Manly QLD  
(07) 3396 9988

#### Road Tech Marine

20 Redland Bay Rd, Capalaba QLD  
(07) 3914 9543

### Boat Building / Repairs – Located at RQYS

#### JSA Marine

(07) 3348 5682

#### David Glenn Boat Building

0412 878 144

### Physio

#### Manly Physiotherapy & Pilates

3/443 Esplanade, Manly QLD  
(07) 3396 8137

#### Bounce Physio Birkdale

190 Birkdale Rd, Birkdale QLD  
(07) 3822 2122

### Pharmacy

#### Manly Village Pharmacy

9/222 Stratton Terrace, Manly QLD  
(07) 3396 8999

### Groceries

#### IGA Manly Village

Cnr Stratton Tce & Cambridge Parade  
(07) 3396 1980

#### Woolworths Wynnum Central

145 Florence St, Wynnum QLD  
(07) 3513 4416

### Butcher

#### The Local Butcher

222 Stratton Terrace, Manly QLD  
(07) 3396 2195

### Bakery

#### Manly Bakery

222 Stratton Terrace, Manly QLD  
(07) 3396 5688

### Accommodation

#### [Manly Marine Cover Motel](#)

Located on the Grounds of RQYS  
(07) 3348 1000

#### Limited Camping Facilities at RQYS

[Limited camping MAY be available](#)  
(07) 3396 8666

#### [The Manly Hotel](#)

54 Cambridge Parade, Manly QLD  
(07) 3249 5999

#### [Waterloo Bay Hotel](#)

75 Berrima St, Wynnum QLD  
(07) 3893 2344

#### [Pelican's Nestle Inn](#)

149 Wynnum Esplanade, Wynnum QLD  
(07) 3396 3214

#### [Wynnum Anchor Motel](#)

14 Adam St, Wynnum QLD  
(07) 3396 3037

## LOCAL WEATHER TIDE

Local Weather:

The RQYS Weather Station can be found at: <https://www.rqys.com.au/weather-station/>  
The Weather Station records from above the club Bay Lookout.

BOM: Radar: <http://www.bom.gov.au/products/IDR663.loop.shtml>

Marine Forecast:

<http://www.bom.gov.au/qld/forecasts/moreton-bay.shtml>

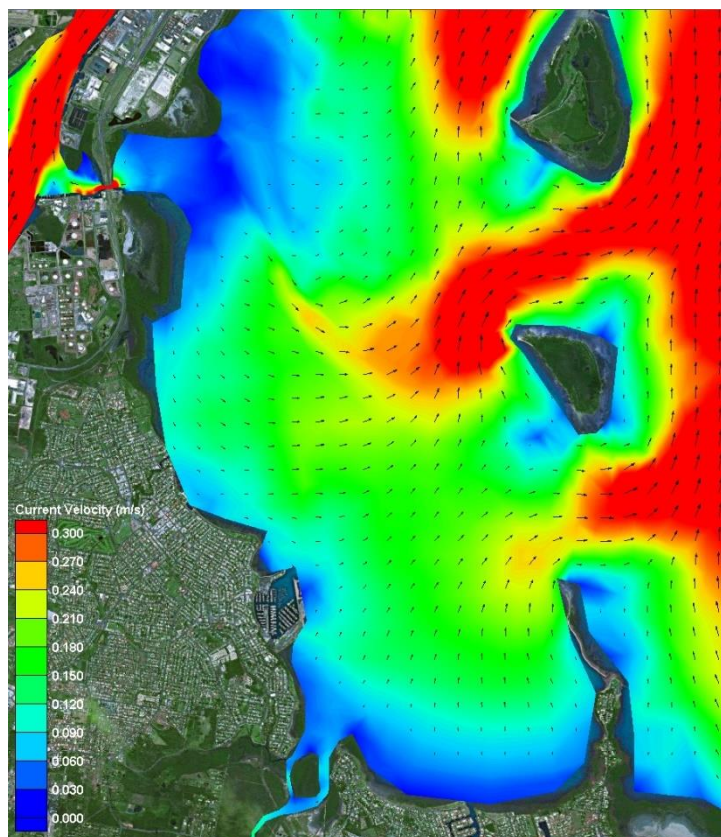
Other Popular forecasts:

Predict Wind: <https://forecast.predictwind.com/table/>

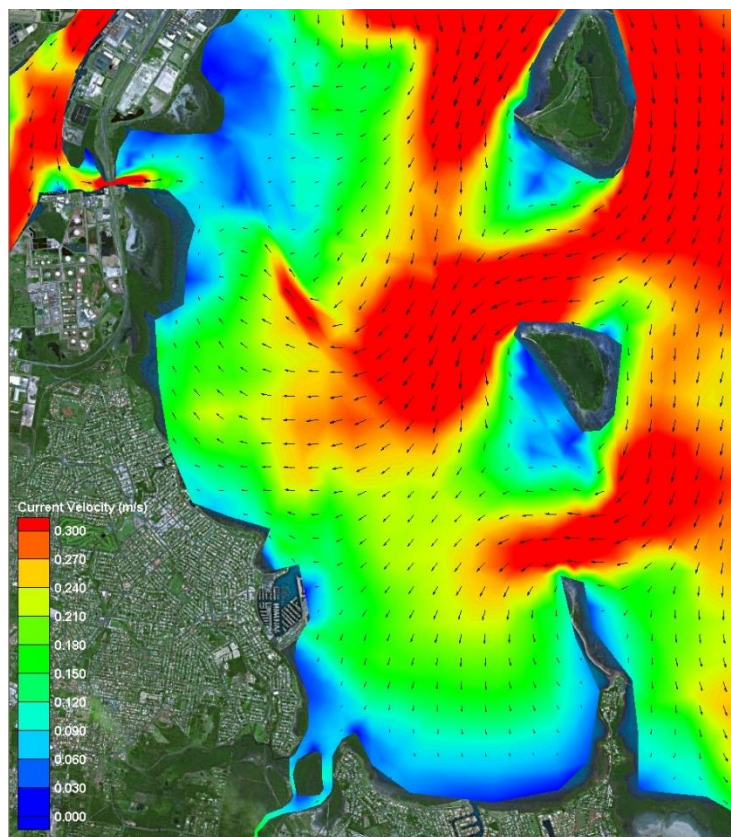
Seabreeze: <https://www.seabreeze.com.au/weather/wind-forecast/brisbane>

WillyWeather: <https://wind.willyweather.com.au/qld/brisbane/brisbane.html>

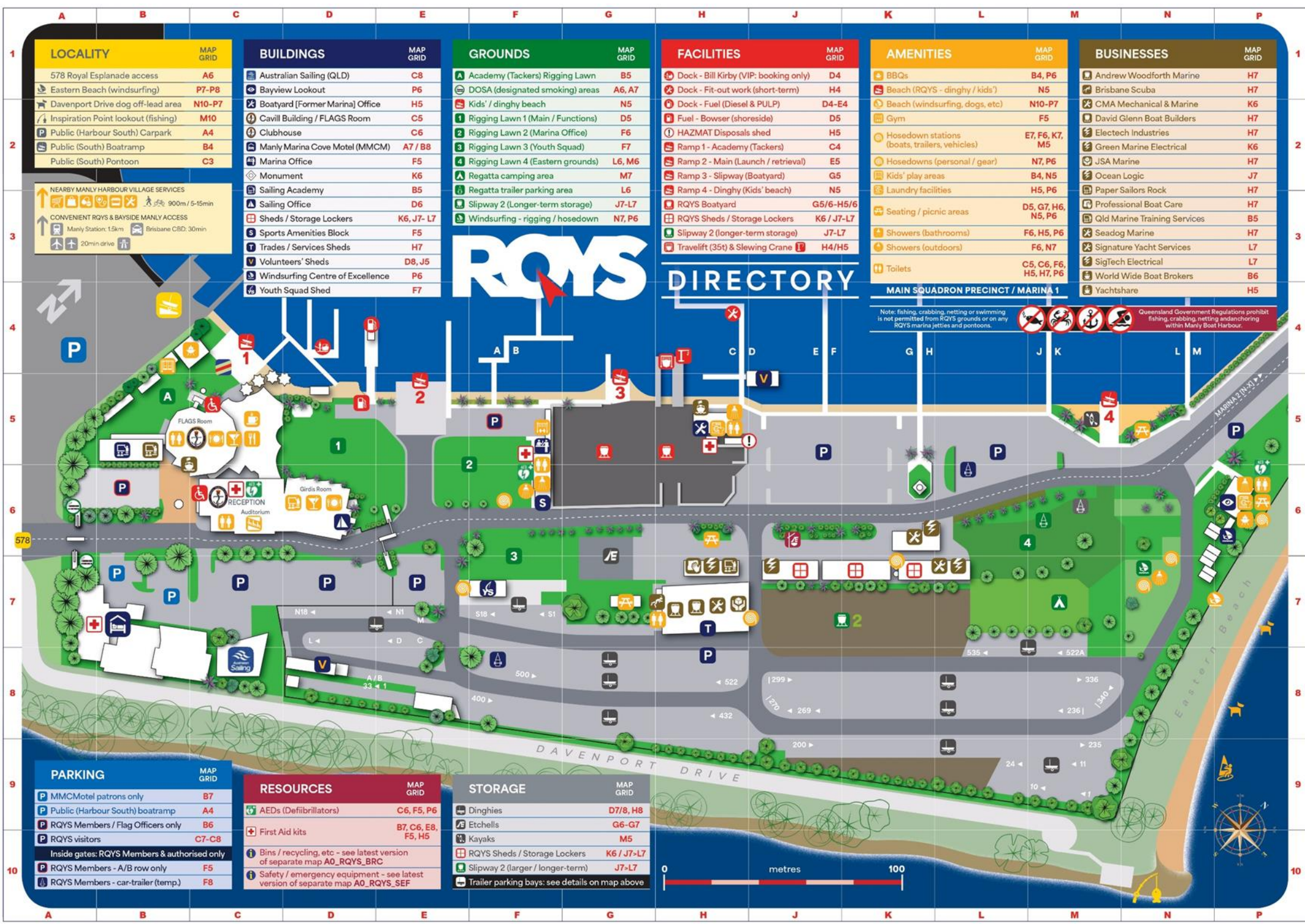
**Waterloo Bay Ebb**



**Waterloo Bay Flood**







LOCALITY	MAP GRID
578 Royal Esplanade access	A6
Eastern Beach (windsurfing)	P7-P8
Davenport Drive dog off-lead area	N10-P7
Inspiration Point lookout (fishing)	M10
Public (Harbour South) Carpark	A4
Public (South) Boatramp	B4
Public (South) Pontoon	C3

NEARBY MANLY HARBOUR VILLAGE SERVICES  
900m / 5-15min

CONVENIENT RQYS & BAYSIDE MANLY ACCESS  
Manly Station: 15km  
Brisbane CBD: 30min  
20min drive

BUILDINGS	MAP GRID
Australian Sailing (QLD)	C8
Bayview Lookout	P6
Boatyard [Former Marina] Office	H5
Cavill Building / FLAGS Room	C5
Clubhouse	C6
Manly Marina Cove Motel (MMCM)	A7 / B8
Marina Office	F5
Monument	K6
Sailing Academy	B5
Sailing Office	D6
Sheds / Storage Lockers	K6, J7- L7
Sports Amenities Block	F5
Trades / Services Sheds	H7
Volunteers' Sheds	D8, J5
Windsurfing Centre of Excellence	P6
Youth Squad Shed	F7

GROUND	MAP GRID
Academy (Tackers) Rigging Lawn	B5
DOSA (designated smoking) areas	A6, A7
Kids' / dinghy beach	N5
Rigging Lawn 1 (Main / Functions)	D5
Rigging Lawn 2 (Marina Office)	F6
Rigging Lawn 3 (Youth Squad)	F7
Rigging Lawn 4 (Eastern grounds)	L6, M6
Regatta camping area	M7
Regatta trailer parking area	L6
Slipway 2 (Longer-term storage)	J7-L7
Windsurfing - rigging / hosedown	N7, P6

FACILITIES	MAP GRID
Dock - Bill Kirby (VIP: booking only)	D4
Dock - Fit-out work (short-term)	H4
Dock - Fuel (Diesel & PULP)	D4-E4
Fuel - Bowser (shoreside)	D5
HAZMAT Disposals shed	H5
Ramp 1 - Academy (Tackers)	C4
Ramp 2 - Main (Launch / retrieval)	E5
Ramp 3 - Slipway (Boatyard)	G5
Ramp 4 - Dinghy (Kids' beach)	N5
RQYS Boatyard	G5/6-H5/6
RQYS Sheds / Storage Lockers	K6 / J7-L7
Slipway 2 (longer-term storage)	J7-L7
Travelift (35t) & Slewing Crane	H4/H5

AMENITIES	MAP GRID
BBQs	B4, P6
Beach (RQYS - dinghy / kids')	N5
Beach (windsurfing, dogs, etc)	N10-P7
Gym	F5
Hosedown stations (boats, trailers, vehicles)	E7, F6, K7, M5
Hosedowns (personal / gear)	N7, P6
Kids' play areas	B4, N5
Laundry facilities	H5, P6
Seating / picnic areas	D5, G7, H6, N5, P6
Showers (bathrooms)	F6, H5, P6
Showers (outdoors)	F6, N7
Toilets	C5, C6, F6, H5, H7, P6

BUSINESSES	MAP GRID
Andrew Woodforth Marine	H7
Brisbane Scuba	H7
CMA Mechanical & Marine	K6
David Glenn Boat Builders	H7
Electech Industries	H7
Green Marine Electrical	K6
JSA Marine	H7
Ocean Logic	J7
Paper Sailors Rock	H7
Professional Boat Care	H7
Qld Marine Training Services	B5
Seadog Marine	H7
Signature Yacht Services	L7
SigTech Electrical	L7
World Wide Boat Brokers	B6
Yachtshare	H5

PARKING	MAP GRID
MMCMotel patrons only	B7
Public (Harbour South) boatramp	A4
RQYS Members / Flag Officers only	B6
RQYS visitors	C7-C8
Inside gates: RQYS Members & authorised only	
RQYS Members - A/B row only	F5
RQYS Members - car-trailer (temp.)	F8

RESOURCES	MAP GRID
AEDs (Defibrillators)	C6, F5, P6
First Aid kits	B7, C6, E8, F5, H5
Bins / recycling, etc - see latest version of separate map A0_RQYS_BRC	
Safety / emergency equipment - see latest version of separate map A0_RQYS_SEF	

STORAGE	MAP GRID
Dinghies	D7/8, H8
Etchells	G6-G7
Kayaks	M5
RQYS Sheds / Storage Lockers	K6 / J7-L7
Slipway 2 (larger / longer-term)	J7-L7
Trailer parking bays: see details on map above	

MAIN SQUADRON PRECINCT / MARINA 1

Note: fishing, crabbing, netting or swimming is not permitted from RQYS grounds or on any RQYS marina jetties and pontoons.

Queensland Government Regulations prohibit fishing, crabbing, netting and anchoring within Manly Harbour.

# RQYS DIRECTORY





# ROYAL QUEENSLAND YACHT SQUADRON – THE SAILING GATEWAY TO MORETON BAY

