



18 Footers **Australian** **Championships**

18 – 20 January 2025

NOTICE OF RACE **(NoR)**

Including **Amendment 1**

ORGANISING AUTHORITY

ROYAL QUEENSLAND YACHT SQUADRON LTD
578 Royal Esplanade, Manly, QLD 4179

The notation '[NP]' in a rule means that a boat may not protest another boat for breaking that rule. This changes RRS 60.1(a).

The notation '[DP]' in a rule means that the penalty for a breach of the rule may, at the discretion of the protest committee be less than disqualification. This changes Rule 64.2

1. RULES

- 1.1 The event is governed by the rules as defined in The Racing Rules of Sailing.
- 1.2 Appendix T – Arbitration will apply.
- 1.3 Competitors must follow RQYS Club Policies (<https://www.rqys.com.au/membership/rules-and-regulations/>)

2. SAILING INSTRUCTIONS

- 2.1 The sailing instructions will be available after 1200 on 17/01/2025 at <https://www.rqys.com.au/18ft-aus-champs-25/>

3. COMMUNICATION

- 3.1 The online official notice board is located at <https://www.rqys.com.au/18ft-aus-champs-25/>
- 3.2 Secondary to the Official noticeboard “instant messaging” system WhatsApp may be used to notify skippers of timely information, confirmation of days course, Protest Time limit etc. Join the group at <https://chat.whatsapp.com/Krvkl3lxESZK8mJaCs2mQ9>
- 3.3 [DP] While racing, except in an emergency, a boat shall not make voice or data transmissions and shall not receive voice or data communication that is not available to all boats.

4. ELIGIBILITY AND ENTRY

- 4.1 The event is open to all boats compliant with the 18ft Skiff Class Rules – Amended November 2023 (<https://18footers.com/18-footer-racing/notice-board-and-documents-2024-25/>).
- 4.2 Eligible boats may enter by completing the online entry, together with the required fee, at <https://app.sailsys.com.au/club/25/entry/series/4135/pricing> by 11/01/2025
- 4.3 To be considered an entry in the event, a boat shall complete all registration requirements and pay all fees.
- 4.4 Late entries may be accepted at the discretion of the Organising Authority.

5. FEES

- 5.1 The entry fee shall be \$500, if received before 1st November 2024.
- 5.2 The entry fee is \$750, if received on or after the 15th of November 2024.
- 5.3 Any Refunds will be as per the RQYS Sailing Refunds Policies (<https://www.rqys.com.au/membership/rules-and-regulations/>).

6. ADVERTISING

- 6.1 Boats may be required to display advertising chosen and supplied by the organizing authority.

7. SCHEDULE

- 7.1

Date	Event	Time / Warning Signal
18/01/2025	Registration & Briefing on the eastern end of the club's boardwalk area.	1100hrs
	First Warning not before	1200hrs
19/01/2025	First Warning not before	1200hrs
20/01/2025	First Warning not before	1100hrs
	Presentation	ASAP after Racing

- 7.2 On the last scheduled day of racing no warning signal will be made after 1500 hrs.

8. EQUIPMENT INSPECTION

- 8.1 Each boat shall have a valid measurement certificate.
- 8.2 Boats may be inspected at any time.

9. VENUE

- 9.1 NoR Attachment A shows the location of the racing areas.
- 9.2 NoR Attachment B shows the plan of the event venue.

10. COURSES

- 10.1 The courses to be sailed and marks that may be used will be described in the Sailing Instructions.

11. PENALTY SYSTEM

- 11.1 For the 18 Footers National Championship RRS 44.1 is changed so that the Two-Turns Penalty is replaced by the One-Turn Penalty.

12. SCORING

- 12.1 4 races are required to be completed to constitute a series
- 12.2 A boat's series score shall be the total of her race scores.
 - 12.3 (a) When fewer than 5 races have been completed, a boat's series score will be the total of her race scores.
 - 12.3 (b) When 5 to 7 races have been completed, a boat's series score will be the total of her race scores excluding her worst score

13. RISK STATEMENT

- 13.1 RRS 3 states: 'The responsibility for a boat's decision to participate in a race or to continue to race is hers alone.' By participating in this event each competitor agrees and acknowledges that sailing is a potentially dangerous activity with inherent risks. These risks include strong winds and rough seas, sudden changes in weather, failure of equipment, boat handling errors, poor seamanship by other boats, loss of balance on an unstable platform and fatigue resulting in increased risk of injury. **Inherent in the sport of sailing is the risk of permanent, catastrophic injury or death by drowning, trauma, hypothermia or other causes.**
- 13.2 All participants are required to comply with any safety provisions as mandated under the Racing Rules of Sailing, the Australian Sailing Special Regulations Part 2 for Off The Beach Boats, and any Class Rules that may apply. The Squadron encourages and supports competitors who believe it is appropriate to exceed the above requirements (such as the wearing of helmets, body armor, impact vests, etc.) if they or their guardian believe that conditions and their personal circumstances warrant. All competitor's attention is drawn to the Risk Statement - Section 13 of the Notice of Race.

14. INSURANCE

- 14.1 Each participating boat shall be insured with valid third-party liability insurance with a minimum cover of \$10,000,000AUD per incident or the equivalent.

15. PRIZES

15.1 Prizes will be given as follows:

15.1 (a) 1st, 2nd and 3rd overall

15.1 (b) 1st, 2nd and 3rd handicap

15.1 (c) Cordukes Clubhouse Trophy

15.1 (d) Commodore Cup

15.1 (e) President's Trophy

15.1 (f) Ferry Patron's Trophy

15.1 (g) Casper Memorial Trophy

15.2 Other prizes may be awarded at the discretion of the Organising Authority

16. FURTHER INFORMATION

16.1 For further information please contact:

RQYS Sailing: 07 3396 8666 / sailing@rqys.com.au

578 Royal Esplanade MANLY QLD 4179 AUS

www.rqys.com.au

LOCATION INFORMATION

- [Regatta Notice Board](#) View the Regatta Notice Board to access Sailing Instructions, Entry, Amendments and more
- Accommodation: Ample and varied accommodation is available in the local area. Early bookings are recommended.
- The Manly Marina Cove Motel is located on the grounds of RQYS – www.manlymarinacove.com
- Limited [camping](#) facilities **may** be available in the grounds of RQYS.
- Other Local Accommodation Includes:
- [The Manly Hotel](#), [Waterloo Bay Hotel](#), [Pelican's Nestle Inn](#), [Wynnum Anchor Motel](#)
- Access to RQYS: RQYS Reception (located on the left as you enter the club) is available to assist with access between the hours of 7am and 7pm.
- Manly Amenities: [North Sails](#) (Sailmaker) – Club Sponsor North Sails is located just down the road from the club at 1/264 Tingal Road, an 8 minute drive away.
- [Muir Marine QLD](#) (Chandlery) - Muir Marine have been serving the Marine Industry for over 100 years and supply everything in boating equipment. Located at 453 Esplanade a 3 minute drive from the club.
- [IGA Manly Village](#) – IGA is the closest grocery store to RQYS located just 3 minute drive away, at the corner of Stratton Tce & Cambridge Parade.
- [Manly Village Medical](#) – Is the closest medical centre to RQYS, located at 25 Cambridge Parade a 2 minute drive away.
- Local Weather: The RQYS Weather Station can be found at:
<https://www.rqys.com.au/weather-station/>
The Weather Station records from above the club Bay Lookout.
- BOM: Radar: <http://www.bom.gov.au/products/IDR663.loop.shtml>
Marine Forecast:
<http://www.bom.gov.au/qld/forecasts/moreton-bay.shtml>
- Other Popular forecasts:
- Predict Wind: <https://forecast.predictwind.com/table/>
Seabreeze: <https://www.seabreeze.com.au/weather/wind-forecast/brisbane>
WillyWeather: <https://wind.willyweather.com.au/qld/brisbane/brisbane.html>

Attachment B

EMERGENCY CONTACTS

Emergencies	000	
RQYS Sailing Manager	0424 101 732	
Royal Queensland Yacht Squadron	(07) 3396 8666	578 Royal Esplanade, Manly QLD
Manly Coast Guard	(07) 3396 5911	40 Trafalgar St, Manly QLD
Wynnum Police	(07) 3308 8100	82 Pine St, Wynnum QLD
Wynnum Fire & Rescue	(07) 3396 3297	2006 Wynnum Rd, Wynnum West
Brisbane Water Police	(07) 3895 0333	2 Howard Smith Dr, Port of Brisbane

Location, access & communication of Next of Kin Details

Sailing Office & SailSys Databases including information gathered from regatta registrations and/or indemnity forms.

Location of Nearest Emergency Medical Facilities

Redlands Hospital	(07) 3488 3111	21 Weippin St, Cleveland QLD
-------------------	----------------	------------------------------

Location of Nearest Medical Facilities

Wynnum Family Health Service	(07) 3893 0093	116 Edith St, Wynnum QLD
Doctors on Manly Road	(07) 3348 6111	12 Manly Rd, Manly QLD
Silky Oaks Medical Practice	(07) 3396 9855	218 Manly Rd, Manly QLD
Dental On Cambridge	(07) 3348 6661	4/99 Cambridge Parade, Manly QLD

LOCAL SERVICES

Sail Maker

North Sails

1/264 Tingal Rd, Wynnum QLD
3396 5822

Hood Sails

181 Wynnum Esplanade, Wynnum QLD
0419 799 958

Ullman Sails

112 Glenora St, Wynnum QLD
(07) 3348 7245

Chandlery

Muir Marine

453 Esplanade, Manly QLD
(07) 3396 9988

Road Tech Marine

20 Redland Bay Rd, Capalaba QLD
(07) 3914 9543

Boat Building / Repairs – Located at RQYS

JSA Marine

(07) 3348 5682

David Glenn Boat Building

0412 878 144

Physio

Manly Physiotherapy & Pilates

3/443 Esplanade, Manly QLD
(07) 3396 8137

Bounce Physio Birkdale

190 Birkdale Rd, Birkdale QLD
(07) 3822 2122

Pharmacy

Manly Village Pharmacy

9/222 Stratton Terrace, Manly QLD
(07) 3396 8999

Groceries

IGA Manly Village

Cnr Stratton Tce & Cambridge Parade
(07) 3396 1980

Woolworths Wynnum Central

145 Florence St, Wynnum QLD
(07) 3513 4416

Butcher

The Local Butcher

222 Stratton Terrace, Manly QLD
(07) 3396 2195

Bakery

Manly Bakery

222 Stratton Terrace, Manly QLD
(07) 3396 5688

Accommodation

[Manly Marine Cover Motel](#)

Located on the Grounds of RQYS
(07) 3348 1000

Limited Camping Facilities at RQYS

[Limited camping MAY be available](#)
(07) 3396 8666

[The Manly Hotel](#)

54 Cambridge Parade, Manly QLD
(07) 3249 5999

[Waterloo Bay Hotel](#)

75 Berrima St, Wynnum QLD
(07) 3893 2344

[Pelican's Nestle Inn](#)

149 Wynnum Esplanade, Wynnum QLD
(07) 3396 3214

[Wynnum Anchor Motel](#)

14 Adam St, Wynnum QLD
(07) 3396 3037

LOCAL WEATHER TIDE

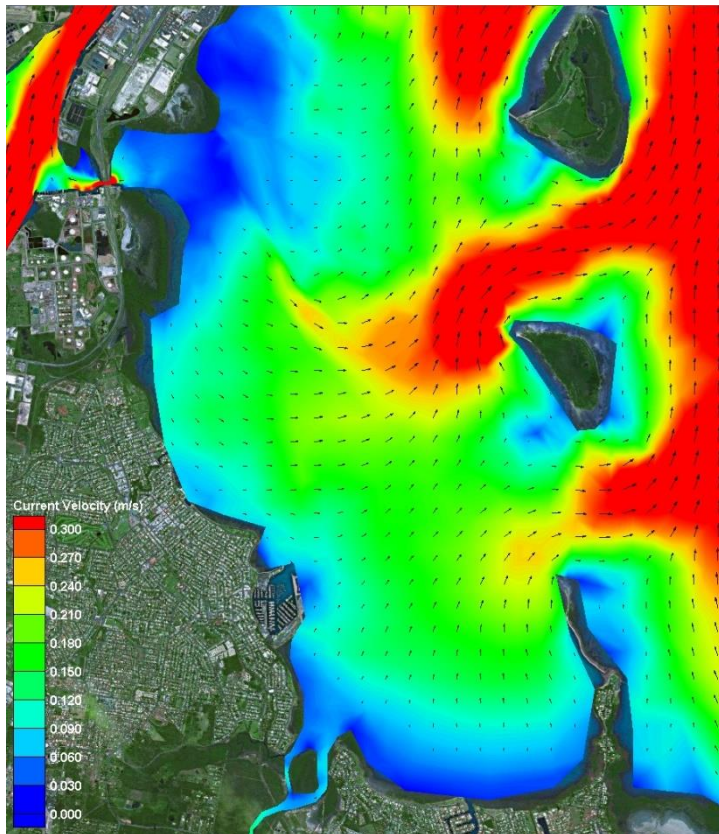
Local Weather: The RQYS Weather Station can be found at:
<https://www.rqys.com.au/weather-station/>
The Weather Station records from above the club Bay Lookout.

BOM: Radar: <http://www.bom.gov.au/products/IDR663.loop.shtml>
Marine Forecast:
<http://www.bom.gov.au/qld/forecasts/moreton-bay.shtml>

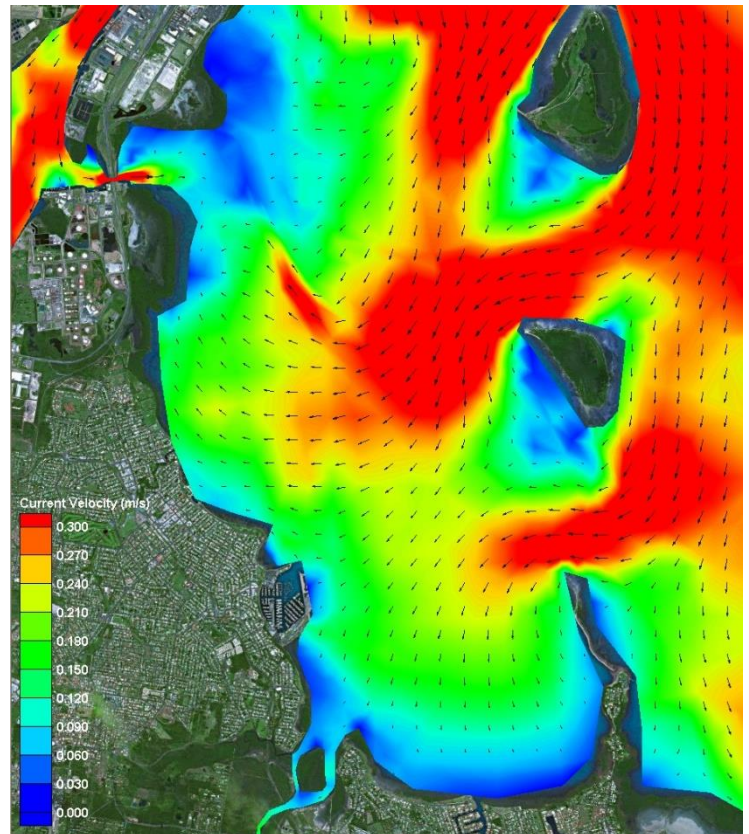
Other Popular forecasts:

Predict Wind: <https://forecast.predictwind.com/table/>
Seabreeze: <https://www.seabreeze.com.au/weather/wind-forecast/brisbane>
WillyWeather: <https://wind.willyweather.com.au/qld/brisbane/brisbane.html>

Waterloo Bay Ebb



Waterloo Bay Flood





ROYAL QUEENSLAND YACHT SQUADRON – THE SAILING GATEWAY TO MORETON BAY

Gold Coast

← 75km

Brisbane CBD

Sunshine Coast

→ 100km

30min

50min

20min

International

BNE

Domestic

Manly Station

Manly Harbour Village

Wynnum Central

Brisbane Volunteer Coastguard

Protected migratory bird roost



~ Founded 1885 ~

r.qys.com.au

[/RQYS.Manly](https://www.facebook.com/RQYS.Manly)



[/royal_qld_yacht_squadron](https://www.instagram.com/royal_qld_yacht_squadron)



Australian Sailing Office

Manly Marina Cove Motel

Clubhouse, coffeeshop & bistro
Function rooms

Main launching ramp & rigging lawns

Marina & Sailing Offices

Boat maintenance & chandlery

Showers / laundry

Eastern beach
Windsurfing

Bayview Lookout
Showers / laundry

Boat storage

Waterloo Bay

0