



Etchells Queensland 2025 World Championships Qualification Series

14, 21, 28, and 29 September 2024

SAILING INSTRUCTIONS (SI)

ORGANISING AUTHORITY

ROYAL QUEENSLAND YACHT SQUADRON LTD
578 Royal Esplanade, Manly, QLD 4179

In conjunction with the
International Etchells Class Association Brisbane Fleet Inc.



The notation '[NP]' in a rule of the sailing instructions (SIs) means that a boat may not protest another boat for breaking that rule. This changes RRS 60.1(a).

The notation '[DP]' in a rule of the sailing instructions (SIs) means that a protest committee can award a penalty less than disqualification (including no penalty) at their discretion. This changes Rule 64.2

1. RULES

- 1.1. The regatta will be governed by the "rules" as defined in the current *Racing Rules of Sailing* (RRS) 2021-2024. and the International Etchells Class Association Rules (IECA Rules).
<https://sailing.org/documents/racingrules/index.php>
- 1.2. The Organising Authority may require all participating boats to display the event Sponsor's advertising in accordance with World Sailing (WS) Regulation 20.4.1. No other advertising shall be displayed on competing yachts.
- 1.3. Bow numbers may be provided and fitted by the Organising Authority.
- 1.4. The Etchells Queensland State Titles will be an Open Event as per IECA Appendix A, Rule 3 except that all skippers and crew will still be required to be members of the IECAA.
- 1.5. The prescriptions of Australian Sailing (AS) apply.
- 1.6. The AS Special Regulations Part 1 Category 7 shall apply.
- 1.7. Appendix T (Arbitration will apply).
- 1.8. Competitors must follow Club Policies (<https://www.rqys.com.au/membership/rules-and-regulations/>)

2. CHANGES TO SAILING INSTRUCTIONS

- 2.1. Any change to the sailing instructions will be posted before 0900 hours on the day it will take effect, except that any change to the schedule of races will be posted by 2000 hours on the day before it will take effect.

3. COMMUNICATION

- 3.1. The online official notice board is located at <https://www.rqys.com.au/etchells-queensland-2025-world-championships-qualification-series/>
- 3.2. [DP] All boats shall carry a VHF radio capable of communicating on channels 72 & 77.
- 3.3. On the water, the race committee will make courtesy broadcasts to competitors on VHF radio. The channel will be confirmed at the skippers briefing.
- 3.4. [DP] From the first warning signal until the end of the last race of the day, except in an emergency, a boat shall not make voice or data transmissions and shall not receive voice or data communication that is not available to all boats.

3. CODE OF CONDUCT

- 4.1. [DP] Competitors and support persons shall comply with reasonable requests from race officials.
- 4.2. [DP] Competitors and support persons shall handle any equipment or place advertising provided by the organizing authority with care, seamanship, in accordance with any instructions for its use and without interfering with its functionality.

5. SIGNALS MADE ASHORE

- 5.1. Signals made ashore will be displayed at the official flagpole located at the top of the Eastern Gangway of the Bill Kirby Docks.
- 5.2. When flag AP is displayed ashore, '1 minute' is replaced with 'not less than 45 minutes' in race signal AP. This changes RRS Race Signals.

6. SCHEDULE OF EVENTS

6.1

Date	Event	Time / First Warning Signal
Saturday 14 th September 2024	Race 1 Race 2	1300 hrs After Race 1
Saturday 21 st September 2024	Race 2 Race 3	1300 hrs After Race 2
Saturday 28 th September 2024	As Per QLD Etchells States Championship 2024 Sailing Instructions Schedule of Events. https://www.rqys.com.au/qld-etchells-state-championships-2024/	
Sunday 29 th September 2024		

- 6.1. A maximum of eight (8) races will be conducted.
- 6.2. No warning signal will be made after 1500 hours on the last scheduled day of racing.
- 6.3. The race committee at its discretion may elect to sail more than the scheduled number of races on any day and as a result may amend the time of the warning signal for the first race of that particular day.
- 6.4. If the race committee decides to sail another race after completion of the day's scheduled race(s) this will be signaled by flying Code Flag "L" from the finish boat.

7. CLASS FLAG

- 7.1. The class flag will be the Etchells Class insignia on a white background.

8. RACING AREA

- 8.1. SI Attachment A shows the location of the racing area.

9. THE COURSES

- 9.1. The diagrams in SI Attachment B show the course configuration, including the order in which marks are to be passed, and the side on which each mark is to be left.
- 9.2. The course to be sailed will be designated by displaying Numeral Pennant 1 or Numeral Pennant 2 from the race committee vessel.
- 9.3. The race committee vessel may display the approximate compass bearing from the Starting Line to Mark 1.
- 9.4. In the event that a gate mark is missing and has not been replaced with an object displaying flag M the remaining mark shall be rounded to port.

10. MARKS

- 10.1. Marks shall be as described in SI Attachment B.

11. THE START

- 11.1. The Starting Line will be between a staff displaying an orange flag on the signal vessel at the starboard end and the course side of the port end starting mark.
- 11.2. A boat starting later than 5 minutes after the starting signal will be scored DNS. This changes RRS A5.1 and 5.2.
- 11.3. The Race Committee will attempt to notify OCS, UFD and BFD boats by bow number or sail number by radio on VHF approximately one minute after the starting signal. Failure of equipment, failure to hear a hail, delay in hailing or the order in which hails are given will not be grounds for redress.
- 11.4. Rule 30.4 is changed to permit the race committee to display the sail number and/or bow number. This changes RRS 30.4.

12. CHANGE OF THE NEXT LEG OF THE COURSE

- 12.1. To change the next leg of the course, the Race Committee will lay a new mark (or move the finishing line) and remove the original mark as soon as practicable. When, in a subsequent change, a new mark is replaced, it will be replaced by an original mark.
- 12.2. When Mark 1 has been replaced, Mark 1a is no longer a mark of the course. It will be removed as soon as practicable. This changes RRS 33.

13. THE FINISH

- 13.1. The finishing line will be between a staff displaying a blue flag on the Race Committee vessel and the course side of the finishing mark.

14. PENALTY SYSTEM

- 14.1. The penalty for breaking a rule of Part 2 shall be a One Turn Penalty except that for infringements occurring within the Zone as defined in the RRS the penalty shall be a Two Turns Penalty. This changes RRS 44.1 and 44.2.
- 14.2. [NP] [DP] A boat that has taken a penalty or retired under RRS 44.1 shall complete an acknowledgement form at the Regatta office within the protest time limit.

15. TIME LIMITS

- 15.1. The time limit for Course 1 will be 1.5 hours from the starting signal or for Course 2 it will be 1 hour from the starting signal. If one boat finishes within the time limit, then the race will stand.
- 15.2. If no boat has passed the first windward mark one hour after the starting signal, the race shall be abandoned.
- 15.3. Boats failing to finish within 15 minutes after the first boat sails the course and finishes will be scored Did Not Finish. This changes RRS 35, A5.1 and A.5.2.

16. PROTESTS AND REQUESTS FOR REDRESS

- 16.1. Protest forms are available at the Regatta office. Protests shall be delivered there within 60 minutes of the last boat to finish the last race of the day. This time will be posted on the Official Notice Board. This changes RRS 61.3 and 62.2.
- 16.2. Notices will be posted within 30 minutes of the protest time limit to inform competitors of hearings in which they are parties or named as witnesses. Hearings will be held in the Protest Room beginning at the time and place as posted.
- 16.3. For the purpose of RRS 64.4(b) the 'authority responsible' is those members of the Class International Governing Committee present at the regatta.
- 16.4. Arbitration
 - (a) Protests lodged in accordance with these Sailing Instructions may be subject to an Arbitration Hearing in accordance with RRS Appendix T.
 - (b) RRS Appendix T. 1(b) is deleted and replaced with "A Post-Race Penalty is a 40% Scoring Penalty calculated as stated in rule 44.3(c). However, rule 44.1(a) applies".
 - (c) Arbitration hearings will be held subsequent to the protest being lodged and prior to a protest hearing.
 - (d) Arbitration hearings will be conducted in accordance with RRS Appendix T.

17. SCORING

- 17.1. The Low Point scoring system of the RRS Appendix A will apply.
- 17.2. Three (3) races are required to constitute a series.
- 17.3. Eight (8) races are scheduled.
 - 17.3.1. If three (3) races are completed, then all results will count. This amends A2.
 - 17.3.2. If four (4) or more races are completed, then a boat's worst result will be dropped from the total score. This amends A2.

18. [NP][DP] SAFETY REGULATIONS

- 18.1. [DP] A boat that retires from a race shall notify the race committee at the first reasonable opportunity.
- 18.2. All skippers shall SIGN ON before racing each day and SIGN OFF at the earliest possible time after the completion of racing (but not later than the end of protest time). The sign on will be available outside the Sailing Office adjacent to the main rigging lawn.
 - 18.2.1. Electronic Sign On/Off may be sent out to skippers via SMS as an alternative to paper sign on.
- 18.3. All Maritime Queensland Aquatic Event conditions must be followed including:
 - 18.3.1. All Participating ships are not to impede power driven vessels traversing Manly Boat Harbour and associated channels.
 - 18.3.2. All Participating ships are to obey the gazetted speed limit in Manly Boat Harbour (6 knots).
- 18.4. No Spinnakers are to be flown in the Manly Harbour 6-knot area.
- 18.5. No sailing vessel shall berth on or impede traffic to/from the RQYS fuel dock without permission from the RQYS Sailing or Marina Office.
- 18.6. A boat that retires from a race shall notify the race committee at the first reasonable opportunity.

19. [NP] [DP] REPLACEMENT OF CREW OR EQUIPMENT

- 19.1. Substitution of crew will not be allowed without prior approval of the Organising Authority.
- 19.2. Substitution of damaged or lost equipment will not be allowed without prior Technical Committee verification the new equipment meets the class rules and the written approval of the Organising Authority. Requests for substitution shall be made in writing at the first reasonable opportunity.
- 19.3. After measurement until completion of racing, no boat, sail or any item of measured equipment shall leave the venue without being posted on the Official Equipment Sign-out Sheet on the Official Notice Board. It is the sole responsibility of each skipper to ensure proper recording.
- 19.4. After measurement until completion of racing, no sail shall be recut or altered. Repairs to sails pursuant to all applicable rules are permissible only upon written approval of the Organising Authority. All such sails may be subject to re-measurement on completion of repairs.

20. EQUIPMENT AND MEASUREMENT CHECKS

- 20.1. A boat or equipment may be inspected at any time for compliance with the class rules and sailing instructions which may include RRS 50 and Class Rules C.2.2 and C.3.2.
- 20.2. On the water, a boat can be instructed by the Race Committee and Technical Committee to proceed immediately to a designated area for inspection.

21. CREW WEIGHING

- 21.1. The weights and total combined crew weight of each crew including skipper shall be determined prior to racing.
- 21.2. Crew substitutions shall not be permitted for the purpose of making the weight limit.

22. OFFICIAL VESSELS

- 22.1. Official vessels will be marked by flying a white flag displaying the letters "RC" or a white flag with red letters "MEDIA".

23. [NP] [DP] RADIO COMMUNICATION

- 23.1. This supplements but does not change RRS2 and RRS41 for the IECA. All boats **SHALL** carry a marine band VHF transceiver capable of receiving and transmitting on Australian marine channels. Boats may use the radio to report retirement from racing and may use the radio to request assistance in an emergency. No other transmissions are permitted by competing yachts during the racing day from the first warning signal until the end of the last race of the day.
- 23.2. The Race Committee may use VHF radio to advise competitors of general matters relating to racing. Any failure of, or defect in such a broadcast, will not be grounds for redress.
- 23.3. The use of mobile/cell phones or any device capable of sending and/or receiving external electronic communication and/or connecting to the internet is prohibited from the first Warning Signal of the day until racing has been concluded for the day, except as provided in clause 15.1 or in an emergency threatening safety of any member of the crew or the flotation of the boat and only with the express permission of the Race Committee.

24. RISK STATEMENT

- 24.1. RRS 3 states: 'The responsibility for a boat's decision to participate in a race or to continue to race is hers alone.' By participating in this event each competitor agrees and acknowledges that sailing is a potentially dangerous activity with inherent risks. These risks include strong winds and rough seas, sudden changes in weather, failure of equipment, boat handling errors, poor seamanship by other boats, loss of balance on an unstable platform and fatigue resulting in increased risk of injury. **Inherent in the sport of sailing is the risk of permanent, catastrophic injury or death by drowning, trauma, hypothermia or other causes.**
- 24.2. All participants are required to comply with any safety provisions as mandated under the Racing Rules of Sailing, and any Class Rules that may apply. The Squadron encourages and supports competitors who believe it is appropriate to exceed the above requirements (such as the wearing of helmets, body armor, impact vests, etc.) if they or their guardian believe that conditions and their personal circumstances warrant. All competitor's attention is drawn to the Risk Statement - Section Section 24 of the Sailing Instructions.

25. INSURANCE

- 25.1. All yachts competing in the Regatta are required to carry current Third Party Personal and Property Liability Insurance cover of a minimum AUD\$10,000,000 or equivalent thereof in any other currency for any one accident.
- 25.2. Such insurance policy should also carry a "racing risk" extension.
- 25.3. All owners/competitors who sign the Entry Form are deemed to have made a declaration that they hold such cover. Competitors must produce evidence of such insurance at registration.
- 25.4. Each Skipper and/or co-skipper is liable for any third-party property and personal injury claims.

26. PRIZES

- 26.1. Prizes may be awarded at the discretion of the Organising Authority.

27. SOCIAL

- 27.1. A BBQ will be held for crews and families after racing on Saturday 28th September in the BBQ area at RQYS. There will be no charge for this BBQ.

28. FURTHER INFORMATION

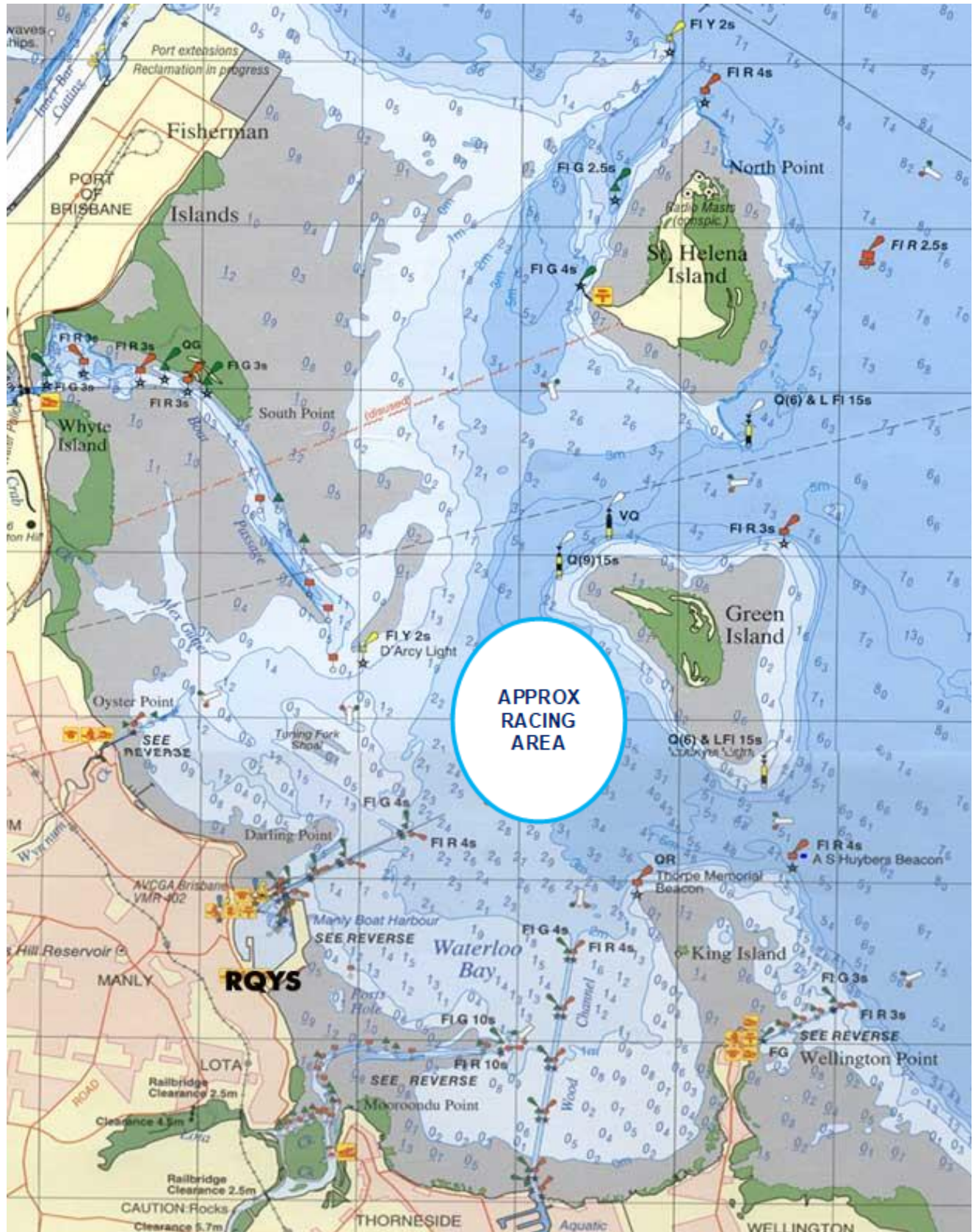
Martin Sinclair - Fleet Captain	0419 488 145	mjsinclair@gmail.com
Helen Wood – Secretary	0427 740 075	hwood41@gmail.com
David Smith – Treasurer	0438 623 783	davidmarshallsmith@gmail.com

Website: www.etchells.org.au/brisbane/

LOCATION INFORMATION

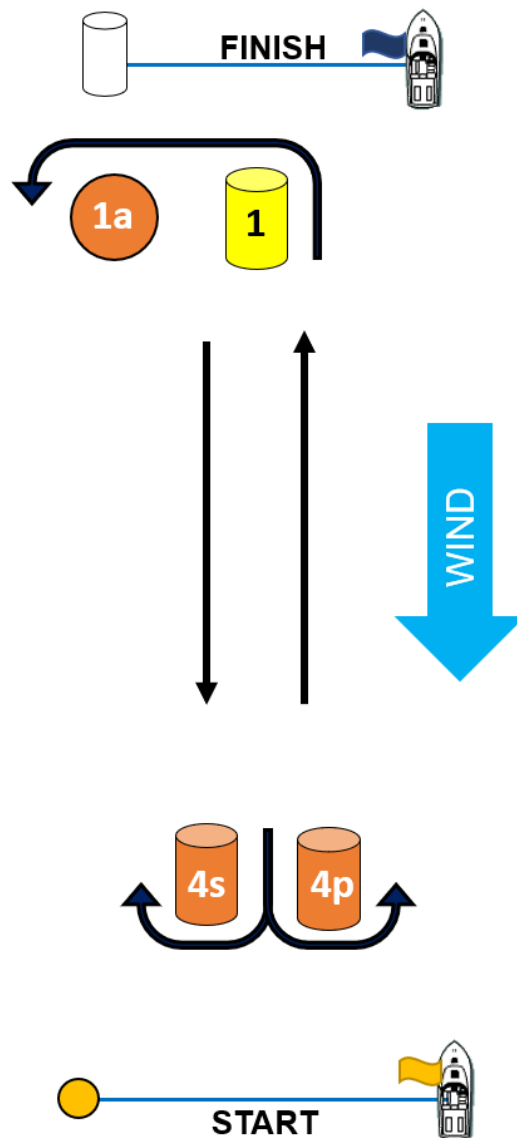
- [Regatta Notice Board](#) View the Regatta Notice Board to access Sailing Instructions, Entry, Amendments and more
- Accommodation: Ample and varied accommodation is available in the local area. Early bookings are recommended.
- The Manly Marina Cove Motel is located on the grounds of RQYS – www.manlymarinacove.com
- Limited [camping](#) facilities **may** be available in the grounds of RQYS.
- Other Local Accommodation Includes:
[The Manly Hotel](#), [Waterloo Bay Hotel](#), [Pelican's Nestle Inn](#), [Wynnum Anchor Motel](#)
- Access to RQYS: RQYS Reception (located on the left as you enter the club) is available to assist with access between the hours of 7am and 7pm.
- Manly Amenities: [North Sails](#) (Sailmaker) – Club Sponsor North Sails is located just down the road from the club at 1/264 Tingal Road, an 8 minute drive away.
- [Muir Marine QLD](#) (Chandlery) - Muir Marine have been serving the Marine Industry for over 100 years and supply everything in boating equipment. Located at 453 Esplanade a 3 minute drive from the club.
- [IGA Manly Village](#) – IGA is the closest grocery store to RQYS located just 3 minute drive away, at the corner of Stratton Tce & Cambridge Parade.
- [Manly Village Medical](#) – Is the closest medical centre to RQYS, located at 25 Cambridge Parade a 2 minute drive away.
- Local Weather: The RQYS Weather Station can be found at: <https://www.rqys.com.au/weather-station/>
The Weather Station records from above the club Bay Lookout.
- BOM: Radar: <http://www.bom.gov.au/products/IDR663.loop.shtml>
Marine Forecast: <http://www.bom.gov.au/qld/forecasts/moreton-bay.shtml>
- Other Popular forecasts:
- Predict Wind: <https://forecast.predictwind.com/table/>
Seabreeze: <https://www.seabreeze.com.au/weather/wind-forecast/brisbane>
WillyWeather: <https://wind.willyweather.com.au/qld/brisbane/brisbane.html>

SI Attachment A



SI Attachment B

CODE	COURSE	MARKS DESCRIPTION
1	Start – 1 – 1a – 4P/4S – 1 – 1a – 4P/4S – Finish	Marks 1: Yellow Inflatable
		Marks 4s/4p: Orange Inflatables
		Start Pin & 1a: Orange teardrop
		Finish Pin: White Inflatable
		Change Mark: Mark 1: Green Inflatable



CODE	COURSE	MARKS DESCRIPTION
2	Start – 1 – 1a – 4s/4p – 1 – 1a – 4p – Finish	Marks 1: Yellow Inflatable
		Marks 2, 4s/4p: Orange Inflatables
		Start Pin & 1a: Orange teardrop
		Finish Pin: White Inflatable
		Change Mark: Mark 1: Green Inflatable

