



QUEENSLAND ILCA WINTER REGATTA

13 & 14th JULY 2024

SAILING INSTRUCTIONS

for

ILCA 4, ILCA 6 & ILCA 7 Divisions

And open to

**Junior, Youth, Open and Masters
Categories**

(SI)

ORGANISING AUTHORITY

Royal Queensland Yacht Squadron Ltd.

On behalf of

The Queensland International Laser Class Association Inc.

The notation '[NP]' in a rule of the Sailing Instructions (SIs) means that a boat may not protest another boat for breaking that rule. This changes RRS 60.1(a).

The notation '[DP]' in a rule of the Sailing Instructions (SI's) means that a protest committee can award a penalty less than disqualification (including no penalty) at their discretion. This changes Rule 64.2

The notation '[SP]' in a rule of the SIs means that a standard penalty may be applied by the race committee without a hearing. This changes RRS 63.1 and A5.

1. RULES

- 1.1. The event is governed by the rules as defined in The Racing Rules of Sailing.
- 1.2. The Australian Sailing prescriptions and special regulations Part 2 of Australian Sailing apply.
- 1.3. The rules and by-laws of the International Laser Class Association (ILCA).
- 1.4. Personal flotation devices shall be worn at all times whilst afloat. Such devices shall be in good condition and in accordance with the specifications issued or approved by a national authority or standards organisation and branded in the country of origin or manufacture. ATTENTION IS DRAWN TO RRS Fundamental Rule 1.2.
- 1.5. Appendix P (Special Procedures for Rule 42) will apply as amended.
 - 1.5.1. The penalty for the first 3 infringements of Rule 42 is a Two-Turns Penalty and any subsequent penalties will be the immediate retirement from that race. This changes RRS Appendix P2.1, P2.2 & P2.3.
- 1.6. RRS Appendix T (Arbitration) shall apply.
- 1.7. Where there is a difference between the Notice of Race (NoR) and the Sailing Instructions (SI) the SI take precedence.

2. CHANGES TO SAILING INSTRUCTIONS

- 2.1. Any change to the Sailing Instructions will be posted before 0900 on the day it will take effect, except that any change to the schedule of races will be posted by 2000 on the day before it will take effect.

3. COMMUNICATIONS WITH COMPETITORS

- 3.1. The online official notice board is located at <https://www.rqys.com.au/qwir/>.
- 3.2. [DP] While racing, except in an emergency, a boat shall not make voice or data transmissions and shall not receive voice or data communication that is not available to all boats.
- 3.3. The race office is located at The RQYS Sailing Office located adjacent to the Main Rigging Lawn, telephone 3396 8666, email sailing@rqys.com.au.
- 3.4. Secondary to the Official noticeboard "instant messaging" system WhatsApp may be used to notify skippers of timely information, confirmation of days course, Protest Time limit etc. the group can be joined at <https://chat.whatsapp.com/K8Bc5AV1uqKGZ8sRI9GSz8>

4. CODE OF CONDUCT

- 4.1 [DP] Competitors and support persons shall comply with reasonable requests from race officials.
- 4.2 [DP] Competitors and support persons shall handle any equipment or place advertising provided by the organizing authority with care, seamanship, in accordance with any instructions for its use and without interfering with its functionality.

5. SIGNALS MADE ASHORE

- 5.1. Signals made ashore will be displayed at the official flag pole located at the top of the Eastern Gangway of the Bill Kirby Docks.
- 5.2. When flag AP is displayed ashore, '1 minute' is replaced with 'not less than 45 minutes' in Race Signals AP.

6. SCHEDULE OF RACES

6.1.

Date	Activity	Time/First Warning
Saturday 13/07/24	Competitor Briefing (in The Auditorium)	1145 hrs
	Race 1	1300 hrs
	Race 2	Races are back to back
Sunday 14/07/24	Race 3	1100 hrs
	Race 4	Races are back to back
	Race 5	
	Presentation of prizes (Location TBA via WhatsApp)	ASAP after Racing

6.2. On the last scheduled day of racing no warning signal will be made after 1500 hrs.

7. CLASS FLAGS

7.1. The class flags are:

Fleet	Flag
ILCA 7	White with Red Class Insignia
ILCA 6	Green with Red Class Insignia
ILCA 4	Yellow with Red Class Insignia

8. RACING AREA

8.1. SI Attachment A shows the location of the racing area.

9. COURSES

9.1. The diagrams in SI Attachment B shows the courses, including the approximate angles between legs, the order in which marks are to be passed, and the side on which each mark is to be left.

10. MARKS

10.1. Marks will be as described in SI Attachment B.

11. THE START

11.1. The starting line is between a staff displaying an orange flag on the signal vessel at the starboard end and the course side of the port-end starting mark.

11.2. Boats whose warning signal has not been made shall avoid the starting area during the starting sequence for other races.

11.3. A boat that does not start within four (4) minutes after her starting signal will be scored Did Not Start without a hearing. This changes RRS A5.1 and A5.2.

12. CHANGE OF THE NEXT LEG OF THE COURSE

12.1. To change the next leg of the course, the race committee will lay a new mark (or move the finishing line) and remove the original mark as soon as practicable. When in a subsequent change a new mark is replaced, it will be replaced by an original mark.

13. THE FINISH

- 13.1. The finishing line will be between a staff displaying a blue flag on the finishing boat at the starboard-end and the course side of the port-end finishing mark.

14. TIME LIMITS AND TARGET TIMES

- 14.1. The Race Time Limit (see RRS 35), and the Finishing Window are shown in the table below.

Division	Target Time	Race Time Limit	Finishing Window
ILCA 4	50 minutes	75 minutes	15 minutes
ILCA 6	50 minutes	75 minutes	15 minutes
ILCA 7	50 minutes	75 minutes	15 minutes

- 14.2. The Finishing Window is the time for boats to finish after the first boat in their division sails the course and finishes. Boats failing to finish within the Finishing Window, and not subsequently retiring, penalized or given redress, will be scored Time Limit Expired (TLE) without a hearing. A boat scored TLE shall be scored points for the finishing place one more than the points scored by the last boat that finished within the Finishing Window. This changes RRS 35, A5.1, A5.2 and A10.
- 14.3. Failure to meet the Target Time will not be grounds for redress. This changes RRS 62.1(a).

15. HEARING REQUESTS

- 15.1. For each division, the protest time limit is 60 minutes after the last boat in that division finishes the last race of the day or the race committee signals no more racing today, whichever is later. The time will be posted on the official notice board.
- 15.2. Hearing request forms are available from the race office or at <https://www.rqys.com.au/documents-auditing/>.
- 15.3. Notices will be posted no later than 30 minutes after the protest time limit to inform competitors of hearings in which they are parties or named as witnesses. Hearings will be held at a time and place advised on the hearing notice.

16. SCORING

- 16.1. Two (2) races are required to be completed to constitute a series.
- 16.1.1. When fewer than Four (4) races have been completed, a boat's series score will be the total of her race score
- 16.1.2. When Four (4) or five (5) races have been completed, a boat's series score will be the total of her race scores excluding her one worst score.
- 16.1.3. Category positions will be determined by the boat's placing in their fleet.

17. SAFETY REGULATIONS

- 17.1. All skippers shall SIGN ON before racing each day and SIGN OFF at the earliest possible time after the completion of racing (but not later than the end of protest time). The sign on will be available near the Sailing Office & the Main Rigging Lawn.
- 17.2. [SP] Failure to SIGN ON shall result in that boat being penalised three (3) points for the first race of the session (but not worse than DNF). Failure to SIGN OFF shall result in that boat being penalised three (3) points for the last race of the session (but not worse than DNF). Penalties shall be applied without a hearing. This changes RRS 63.1 and A5.
- 17.3. All Maritime Queensland Aquatic Event conditions must be followed including:
- 17.3.1. All Participating ships are not to impede power driven vessels traversing Manly Boat Harbour and associated channels.
- 17.3.2. All Participating ships are to obey the gazetted speed limit in Manly Boat Harbour (6 knots).
- 17.4. No sailing vessel shall berth on or impede traffic to/from the RQYS fuel dock without permission from the RQYS Sailing or Marina Office.

18. REPLACEMENT OF EQUIPMENT

- 18.1. [DP] Substitution of damaged or lost equipment is not allowed unless authorized in writing by the Race Committee. Requests for substitution shall be made to the committee at the first reasonable opportunity, which may be after the race.

19. EQUIPMENT AND MEASUREMENT CHECKS

- 19.1. A boat or equipment may be inspected at any time for compliance with the class rules, notice of race and Sailing Instructions.
- 19.2. [DP] When instructed by a race official on the water, a boat shall proceed to a designated area for inspection.

20. OFFICIAL VESSELS

- 20.1. Official vessels will be identified by display of a white flag with black letters "RC" or red "MEDIA"

21. [DP] SUPPORT TEAMS

- 21.1. Team leaders, coaches and other support persons shall stay outside areas where boats are racing from the time of the preparatory signal for the first start until all boats have finished or retired or the race committee signals a postponement, general recall or abandonment.

22. TRASH DISPOSAL

- 22.1. Trash may be placed aboard official or support person vessels.

23. BERTHING

- 23.1. Restrictions may be placed on where vessels may be stored or rigged by the RQYS Sailing or Marina office.
- 23.2. Boats may only be stored on the RQYS rigging lawn for the duration of the regatta & 24hrs before/after the regatta, unless otherwise approved by the OA.
- 23.3. No tie down restraints may penetrate the ground deeper than 300mm due to lawn irrigation systems.

24. PRIZES

- 24.1. All Prizes will be supplied by the Queensland International Laser Class Association Inc.
- 24.2. Prizes will be awarded in all Division Categories where sufficient entries are received. (Refer clause NoR 4).

25. RISK STATEMENT

- 25.1. RRS 3 states: 'The responsibility for a boat's decision to participate in a race or to continue to race is hers alone.' By participating in this event each competitor agrees and acknowledges that sailing is a potentially dangerous activity with inherent risks. These risks include strong winds and rough seas, sudden changes in weather, failure of equipment, boat handling errors, poor seamanship by other boats, loss of balance on an unstable platform and fatigue resulting in increased risk of injury. **Inherent in the sport of sailing is the risk of permanent, catastrophic injury or death by drowning, trauma, hypothermia or other causes.**
- 25.2. All participants are required to comply with any safety provisions as mandated under the Racing Rules of Sailing, the Australian Sailing Special Regulations Part 2 for Off The Beach Boats, and any Class Rules that may apply. The Squadron encourages and supports competitors who believe it is appropriate to exceed the above requirements (such as the wearing of helmets, body armor, impact vests, etc.) if they or their guardian believe that conditions and their personal circumstances warrant. All competitor's attention is drawn to the Risk Statement - Section 25 of the Sailing Instructions.

26. INSURANCE

- 26.1. Each participating boat shall be insured with valid third-party liability insurance with a minimum cover of \$10,000,000AUD per incident or the equivalent.

27. FURTHER INFORMATION

27.1. For further information please contact:

Queensland International Laser Class Association (QILCA)

Dan Self: dself1997@gmail.com

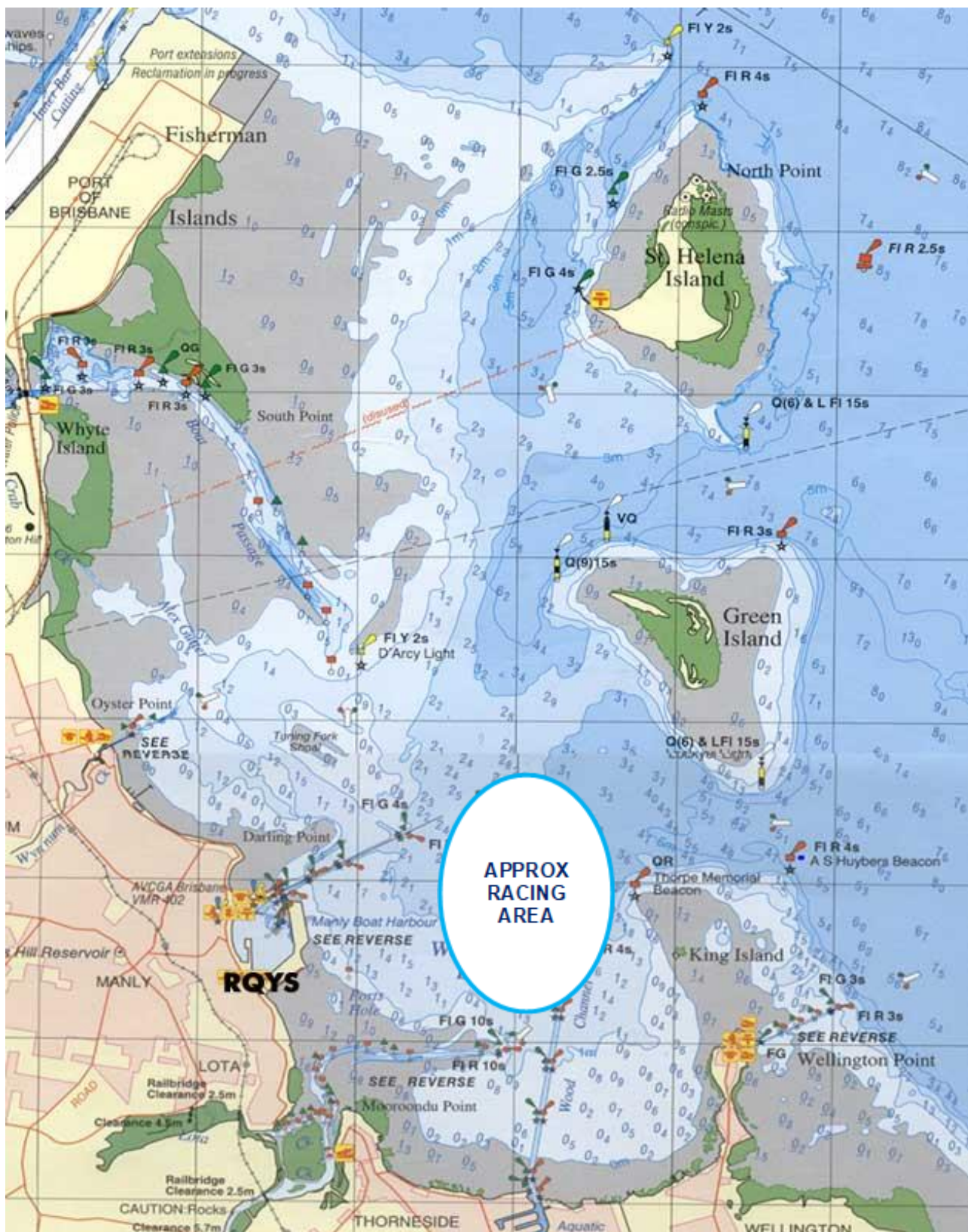
Royal Queensland Yacht Squadron (RQYS)

RQYS Sailing Administrator Austin Sims: sailing@rqys.com.au / 07 3396 8666 (opt 6)

LOCATION INFORMATION

Regatta Notice Board	View the Regatta Notice Board to access Sailing Instructions, Entry, Amendments and more
Accommodation:	<p>Ample and varied accommodation is available in the local area. Early bookings are recommended.</p> <p>The Manly Marina Cove Motel is located on the grounds of RQYS – www.manlymarinacove.com</p> <p>Limited camping facilities may be available in the grounds of RQYS.</p> <p>Other Local Accommodation Includes:</p> <p>The Manly Hotel, Waterloo Bay Hotel, Pelican's Nestle Inn, Wynnum Anchor Motel</p>
Access to RQYS:	RQYS Reception (located on the left as you enter the club) is available to assist with access between the hours of 7am and 7pm.
Manly Amenities:	<p>North Sails (Sailmaker) – Club Sponsor North Sails is located just down the road from the club at 1/264 Tingal Road, an 8 minute drive away.</p> <p>Muir Marine QLD (Chandlery) - Muir Marine have been serving the Marine Industry for over 100 years and supply everything in boating equipment. Located at 453 Esplanade a 3 minute drive from the club.</p> <p>IGA Manly Village – IGA is the closest grocery store to RQYS located just 3 minute drive away, at the corner of Stratton Tce & Cambridge Parade.</p> <p>Manly Village Medical – Is the closest medical centre to RQYS, located at 25 Cambridge Parade a 2 minute drive away.</p>
Local Weather:	<p>The RQYS Weather Station can be found at: https://www.rqys.com.au/weather-station/</p> <p>The Weather Station records from above the club Bay Lookout.</p> <p>BOM: Radar: http://www.bom.gov.au/products/IDR663.loop.shtml</p> <p>Marine Forecast: http://www.bom.gov.au/qld/forecasts/moreton-bay.shtml</p> <p>Other Popular forecasts:</p> <p>Predict Wind: https://forecast.predictwind.com/table/</p> <p>Seabreeze: https://www.seabreeze.com.au/weather/wind-forecast/brisbane</p> <p>WillyWeather: https://wind.willyweather.com.au/qld/brisbane/brisbane.html</p>

SI ATTACHMENT A



SI ATTACHMENT B

CODE	COURSE	
LA1	Start – 1 – 1a – 4p – Finish	Marks 1: Orange Inflatable
LA2	Start – 1 – 1a – 4s/4p – 1 – 1a – 4p – Finish	Mark 2: Yellow Inflatable
LA3	Start – 1 – 1a – 4s/4p – 1 – 1a – 4s/4p – 1 – 1a – 4p – Finish	4s/4p: Orange Inflatables
L1	Start – 2 – 4p – Finish	Start & 1a: Orange Teardrop
L2	Start – 2 – 4s/4p – 2 – 4p – Finish	Finish Pin: White Inflatable
L3	Start – 2 – 4s/4p – 2 – 4s/4p – 2 – 4p – Finish	Change Mark: Mark 1: White Inflatable Mark 2: Purple Inflatable

