

Gill



QUEENSLAND
YOUTH 24
W E E K

Queensland Youth Week Regatta

03 July – 07 July 2024

SAILING INSTRUCTIONS (SI)

Including Amendment **1**, **2**, **3**, **4**

&

Amendment 5

Organising Authority

ROYAL QUEENSLAND YACHT SQUADRON LTD

578 Royal Esplanade, Manly, QLD 4179 | (07) 3396 8666 |

sailing@rqys.com.au | www.rqys.com.au

The notation [NP] in a rule of the sailing instructions (SIs) means that a boat may not protest another boat for breaking that rule. This changes RRS 60.1(a).

The notation [DP] in a rule means that the penalty for a breach of the rule may, at the discretion of the protest committee be less than disqualification. This changes Rule 64.2

The notation [SP] in a rule of the SIs means that a standard penalty may be applied by the race committee without a hearing. This changes RRS 63.1 and A5.

1. RULES

- 1.1. The regatta will be governed by the rules as defined in the current Racing Rules of Sailing, with rule changes as per the Sailing Instructions and Appendix B applying to windsurfing classes.
- 1.2. The Special Regulations of Australian Sailing Part 2 will apply.
- 1.3. The Applicable class rules will apply.
- 1.4. RRS Appendix T – Arbitration will apply.
- 1.5. RRS Appendix P – Shall apply to boats on Bravo & Charlie Course.
- 1.6. Where there is a difference between the Notice of Race (NoR) and the Sailing Instructions (SI) the SI take precedence.
- 1.7. Sailors in the Nacra 15 & IQFoil classes shall wear a suitable helmet at all times while racing.
- 1.8. The RQYS Constitution, Club Participation Rules, House Rules and Codes of Conduct will apply. (<https://www.rqys.com.au/membership/policies-and-documents/>)

2. CHANGES TO SAILING INSTRUCTIONS

- 2.1. Any change to the sailing instructions will be posted before 0800 on the day it will take effect, except that any change to the schedule of races will be posted by 2000 on the day before it will take effect.

3. COMMUNICATIONS WITH COMPETITORS

- 3.1. The online official notice board is located at <https://www.rqys.com.au/qld-youthweek-24/>.
- 3.2. The race office is located at The RQYS Sailing Office located adjacent to the Main Rigging Lawn, telephone 3396 8666, email sailing@rqys.com.au .
- 3.3. The Race Office intends to communicate updates with competitors via WhatsApp, join here: <https://chat.whatsapp.com/BWQV0dxBnTp3DP8KHmxtbz>.
- 3.4. On the water, the race committee may monitor and communicate on VHF radio channel 72 or 77.
- 3.5. [DP] [NP] While racing, except in an emergency, a boat shall not make voice or data transmissions and shall not receive voice or data communication that is not available to all boats.

4. CODE OF CONDUCT [DP][NP]

- 4.1. Competitors and support persons shall comply with reasonable requests from race officials.
- 4.2. Competitors and support persons shall handle any equipment or place advertising provided by the organizing authority with care, seamanship, in accordance with any instructions for its use and without interfering with its functionality.

5. SIGNALS MADE ASHORE

- 5.1. Signals made ashore will be displayed at the official flag pole located at the top of the Eastern Gangway of the Bill Kirby Docks.
- 5.2. When flag AP is displayed ashore, '1 minute' is replaced with 'not less than 45 minutes' in Race Signals AP.
- 5.3. When a white flag with the following letters is flown ashore, signals refer to their corresponding course individually:

"A" = Alpha Course | "B" = Bravo Course | "C" = Charlie Course

6. SCHEDULE OF RACES

6.1.

Date	Event	Time/First Warning
Wednesday 03 July 2024	Registration in the Auditorium	1000 – 1600 hrs
Thursday 04 July 2024	Registration in the Auditorium	0800 hrs – 1059hrs
	Compulsory Competitors Meeting in the Auditorium	1100 hrs
	Racing – Charlie Course First Warning Signal	1230 hrs
	– Bravo Course First Warning Signal	1300 hrs
	– Alpha Course First Warning Signal	1330 hrs
Friday 05 July 2024 & Saturday 06 July 2024	Racing – Alpha Course First Warning Signal	1000 hrs
	– Bravo Course First Warning Signal	1030 hrs
	– Charlie Course First Warning Signal	1000hrs
Sunday 07 July 2024	Racing – Charlie Course First Warning Signal	1000 hrs
	– Bravo Course First Warning Signal	1030 hrs
	– Alpha Course First Warning Signal	1100hrs
	Sausage Sizzle on Tackers Lawn	60 minutes after last boat finishes
	Presentation in the Girdis Room	90 minutes after the last boat finishes

6.2. To alert boats that a race or sequence of races will begin soon, the orange starting line flag will be displayed with one sound at least five minutes before a warning signal is made.

6.3. A maximum of 2 races will be sailed on 04th July & 7th July and a maximum of 3 races will be sailed on 5th July & 6th July.

6.4. A maximum of ten (10) races are scheduled for the regatta.

6.5. On the last scheduled day of racing no warning signal will be made after 1530 hrs.

6.6. For all Charlie Course boats SI 6.3 is amended to a maximum of 3 races on 7th July.

7. CLASS FLAGS

7.1. The class flags are as described in SI Attachment A.

8. RACING AREA

8.1 SI Attachment B shows the location of the racing areas.

9. COURSES

9.1. Course allocations are as described in SI Attachment A.

9.2. The diagrams in SI Attachment C show the courses, including the approximate angles between legs, the order in which marks are to be passed, and the side on which each mark is to be left.

9.3. No later than the warning signal, the race committee signal boat will display the approximate compass bearing of the first leg.

10. MARKS

10.1. Marks are described in SI Attachment C.

10.2. If one of the gate marks is missing then the remaining mark shall be left to port.

11. THE START

- 11.1. The starting line is between a staff displaying an orange flag on the signal vessel at the starboard end and the course side of the port-end starting mark.
- 11.2. [DP] [NP]Boats whose warning signal has not been made shall avoid the starting area during the starting sequence for other races.
- 11.3. A boat that does not start within 4 minutes after her starting signal will be scored Did Not Start without a hearing. This changes RRS A5.1 and A5.2.

12. CHANGE OF THE NEXT LEG OF THE COURSE

- 12.1. To change the next leg of the course, the race committee will lay a new mark (or move the finishing line) and remove the original mark as soon as practicable. When in a subsequent change a new mark is replaced, it will be replaced by an original mark.
- 12.2. When sailing Bravo Course codes "o1", "o2" & "o3" SI 12.1 is deleted and replaced with "To change the next leg of the course, the race committee will move the original mark or the finishing line to a new position."

13. THE FINISH

- 13.1. The finishing line is between a staff displaying a blue flag on the signal vessel at the starboard end and the course side of the port end finishing mark.

14. PENALTY SYSTEM

- 14.1. For all classes on Alpha Course RRS 44.1 is changed so that the Two-Turns Penalty is replaced by the One-Turn Penalty.
- 14.2. RRS P2.3 will not apply and RRS P2.2 is changed so that it will apply to any penalty after the first one. After the second penalty, any breach of RRS 42 may result in the protest committee taking further action under RRS 2 and/or RRS 69.

15. TIME LIMITS AND TARGET TIMES

- 15.1. Time Limits and target times are described in SI Attachment A.
- 15.2. The Finishing Window is the time for boats to finish after the first boat sails the course and finishes. Boats failing to finish within the Finishing Window, and not subsequently retiring, penalized or given redress, will be scored Time Limit Expired (TLE) without a hearing. A boat scored TLE shall be scored points for the finishing place one more than the points scored by the last boat that finished within the Finishing Window. This changes RRS 35, A5.1, A5.2 and A10.
- 15.3. [NP]Upon the closure of the finish window for windsurfing classes, windsurfing class boats may be scored a finish position equivalent to their on-course position.
- 15.4. Failure to meet the Target Time will not be grounds for redress. This changes RRS 62.1(a).

16. HEARING REQUESTS

- 16.1. For each class, the protest time limit is 60 minutes after the last boat in that class finishes the last race of the day or the race committee signals no more racing today, whichever is later. The time will be posted on the official notice board.
- 16.2. Hearing request forms are available from the race office <https://www.rqys.com.au/documents-auditing/> or from the RQYS Sailing Office.
- 16.3. Notices will be posted no later than 30 minutes after the protest time limit to inform competitors of hearings in which they are parties or named as witnesses. Hearings will be held at a time and place advised on the hearing notice.

17. SCORING

- 17.1. Three (3) races are required to be completed to constitute a series
 - 17.2.1. When fewer than 4 races have been completed, a boat's series score will be the total of her race scores.
 - 17.2.2. When from 4 to 8 races have been completed, a boat's series score will be the total of her race scores excluding her worst score.

17.2.3. When from 9 or more races have been completed a boat's series score is the total of here race scores excluding her two worst scores.

18. SAFETY REGULATIONS [DP][NP]

- 18.1. All skippers shall SIGN ON before racing each day and SIGN OFF at the earliest possible time after the completion of racing (but no later than the end of protest time). The sign on/off sheets will be available outside the Sailing Academy "Temporary office" adjacent to the Main Ramp.
- 18.2. [SP] Failure to SIGN ON shall result in that boat being penalised three (3) points for the first race of the session (but not worse than DNF). Failure to SIGN OFF shall result in that boat being penalised three (3) points for the last race of the session (but not worse than DNF). Penalties shall be applied without a hearing. This changes RRS 63.1 and A5.
- 18.3. All Maritime Queensland Aquatic Event conditions must be followed including:
 - 18.3.1. All Participating ships are not to impede power driven vessels traversing Manly Boat Harbour and associated channels.
 - 18.3.2. All Participating ships are to obey the gazetted speed limit in Manly Boat Harbour (6 knots).
- 18.4. No spinnakers are to be flown in the Manly Harbour 6-knot area.
- 18.5. No sailing vessel shall berth on or impede traffic to/from the RQYS fuel dock with out permission from the RQYS Sailing or Marina Office.
- 18.6. A boat that retires from a race shall notify the race committee at the first reasonable opportunity.

19. REPLACEMENT OF CREW OR EQUIPMENT [DP]

- 19.1. Substitution of competitors is not allowed without prior written approval of the race committee.
- 19.2. Substitution of damaged or lost equipment is not allowed unless authorized in writing by the race committee. Requests for substitution shall be made to the committee at the first reasonable opportunity, which may be after the race.

20. EQUIPMENT AND MEASUREMENT CHECKS

- 20.1. A boat or equipment may be inspected at any time for compliance with the class rules, notice of race and sailing instructions.
- 20.2. [DP] [NP] When instructed by a race official on the water, a boat shall proceed to a designated area for inspection.

21. OFFICIAL VESSELS

- 21.1. Official vessels will be identified by display of a white flag with black letters "RC", "J" or red letters "MEDIA".

22. SUPPORT VESSELS [DP] [NP]

- 22.1. Coach and support vessels at the event shall register with the Organising Authority [online](#) prior to registration close (03/07/2024). Registration entitles coaches to a range of benefits including, overnight berthing, refuelling facilities, communication with athletes and access to race course outside of 50m of any competitor or mark between start signal and finish of last boat, except when asked to assist by the Race Committee.
 - 22.1.1. <https://www.revolutionise.com.au/rqys/events/register/236344>
- 22.2. Registration shall be completed by registering the support boat/s online, and then collecting a numbered and coloured sticker from the Regatta Office upon arrival, prior to launching the support boat.
- 22.3. Support and spectator boats that do not register shall not be permitted to launch or retrieve from RQYS premises, or berth there overnight; the Organising Authority reserves the right to remove such vessels from their premises.
- 22.4. All support/coach boats must have the capability to communicate with the Race Committee on VHF 72 and 77 throughout the regatta.
- 22.5. Support vessels must remain in their assigned places in the harbour.
- 22.6. All Support Vessels shall use the public ramp adjacent to the club for launching and retrieving between 1100hrs 03 July – and 1600hrs 07 July (See NoR “Location Information” – Access to RQYS for more information).
- 22.7. Coach and support vessels shall, when requested by the Race Committee, tow or assist boats not associated with them. Coach and support vessels will monitor the designated VHF channel and shall follow all instructions from the Race Committee.

23. TRASH DISPOSAL

- 23.1. Trash may be placed aboard official or support person vessels.

24. BERTHING

- 24.1. [NP][DP] Boats shall be kept in their assigned places as follows (See SI Attachment E for locations):
 - 24.1.1. Charlie Course boats are to be on “Lawn 2”.
 - 24.1.2. Bravo Course boats, other than Windsurfing classes, are to be on “Lawn 3”.
 - 24.1.3. Alpha Course boats are to be on “Lawn 2”.
 - 24.1.4. Windsurfers are to be at the “Windsurfing Centre” (See SI Attachment E & F).
- 24.2. See SI Attachment D for Road Trailer storage Locations.
- 24.3. Restrictions may be placed on where boats may be stored or rigged by the RQYS Sailing or Marina office.
- 24.4. No tie down restraints may penetrate the ground deeper than 300mm due to lawn irrigation systems.

25. PRIZES

- 25.1. Prizes will be awarded to 1st, 2nd and 3rd in each class/division for which 5 or more entries are received.
- 25.2. Single-handed Junior classes (Charlie course) shall be awarded separate Male/Female podiums in each class.
- 25.3. In double-handed classes, podiums shall be awarded Overall with a separate 1st place awarded to the first opposite gendered skipper.
- 25.4. Other prizes may be awarded at the discretion of the Organising Authority.

26. RISK STATEMENT

- 26.1. RRS 3 states: 'The responsibility for a boat's decision to participate in a race or to continue to race is hers alone.' By participating in this event each competitor agrees and acknowledges that sailing is a potentially dangerous activity with inherent risks. These risks include strong winds and rough seas, sudden changes in weather, failure of equipment, boat handling errors, poor seamanship by other boats, loss of balance on an unstable platform and fatigue resulting in increased risk of injury. **Inherent in the sport of sailing is the risk of permanent, catastrophic injury or death by drowning, trauma, hypothermia or other causes.**
- 26.2. All participants are required to comply with any safety provisions as mandated under the Racing Rules of Sailing, the Australian Sailing Special Regulations Part 2 for Off The Beach Boats, and any Class Rules that may apply. The Squadron encourages and supports competitors who believe it is appropriate to exceed the above requirements (such as the wearing of helmets, body armor, impact vests, etc.) if they or their guardian believe that conditions and their personal circumstances warrant. All competitor's attention is drawn to the Risk Statement - Section 16 of the Notice of Race & Section 26 of the Sailing Instructions.

27. INSURANCE

- 27.1. Each participating boat shall be insured with valid third-party liability insurance with a minimum cover of \$10,000,000AUD per incident or the equivalent.

28. FURTHER INFORMATION

- 28.1. For further information please contact:

RQYS Sailing: 07 3396 8666 / sailing@rqys.com.au
578 Royal Esplanade MANLY QLD 4179 AUS
www.rqys.com.au

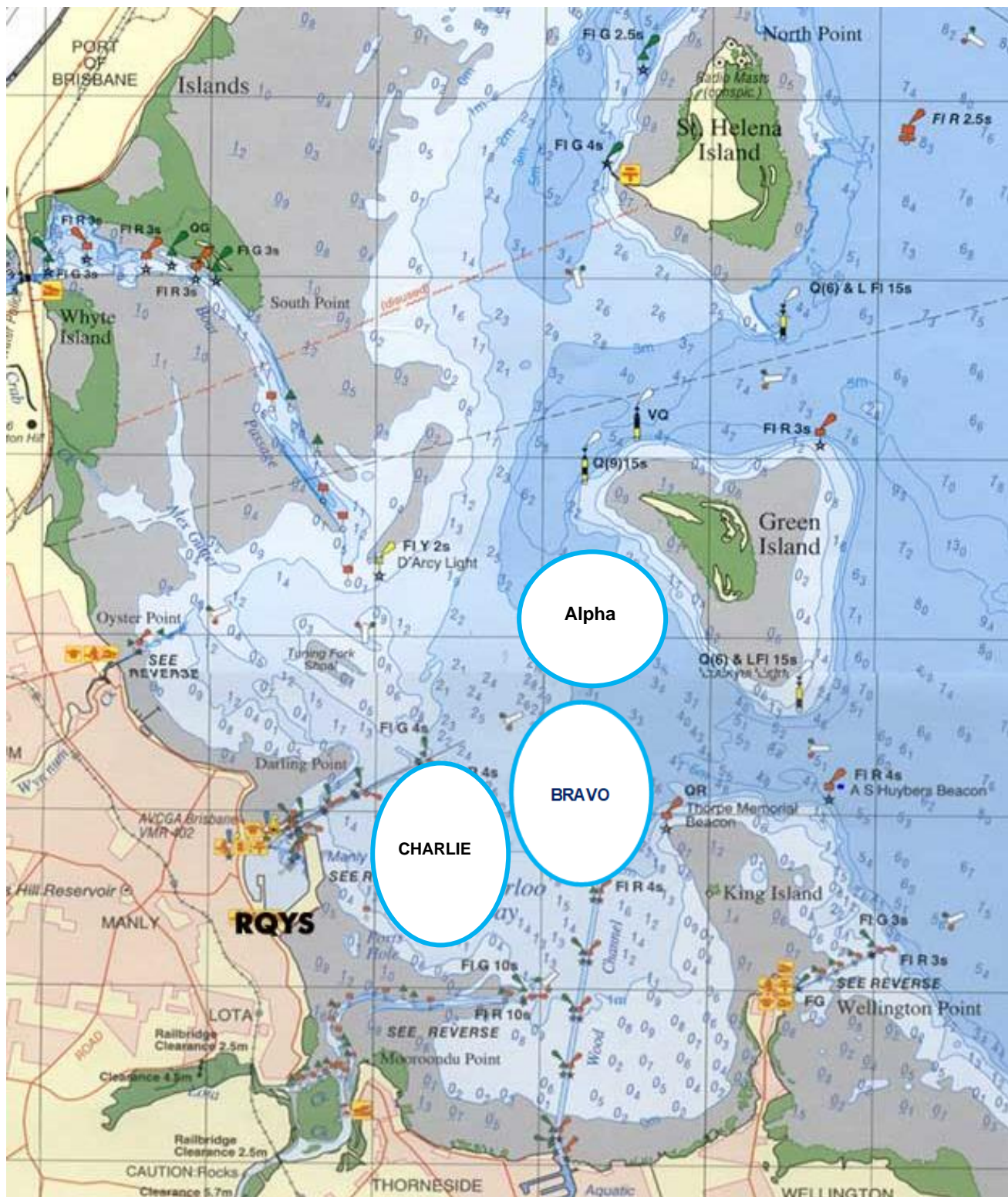
LOCATION INFORMATION

- [Regatta Website](#) View the regatta website to access Sailing Instructions, Entry, Support/Coach Boat Registration, Amendments and more
- Accommodation: Ample and varied accommodation is available in the local area. Early bookings are recommended.
- The Manly Marina Cove Motel is located on the grounds of RQYS – www.manlymarinacove.com
- Limited [camping](#) facilities **may** be available in the grounds of RQYS.
- Other Local Accommodation Includes:
[The Manly Hotel](#), [Waterloo Bay Hotel](#), [Pelican's Nestle Inn](#), [Wynnum Anchor Motel](#)
- Access to RQYS: Drop off (Wednesday 3rd, Thursday 4th Morning) and pick up (Sunday 7th) will be via single use pin codes available through SMS to 0404 900 546 before 30/06/2024 or from the Main Reception Desk.
- Overflow Vehicle Parking shall be the public car park adjacent to the club, please note the carpark is policed for cars parking in car and trailer car parks.
- Pedestrian Gate pin code access codes have already been sent out, or can be obtained from the Main Reception Desk.
- Registered Support Vessel are to launch on the [Public Ramp](#) adjacent to the club, Registered Support Vessel Trailers can then be stored in the designated area inside the club through the main gate. – Registered Support Vessels will be emailed more information on this.
- Manly Amenities: [North Sails](#) (Sailmaker) – Club Sponsor North Sails is located just down the road from the club at 1/264 Tingal Road, an 8 minute drive away.
- [Muir Marine QLD](#) (Chandlery) - Muir Marine have been serving the Marine Industry for over 100 years and supply everything in boating equipment. Located at 453 Esplanade a 3 minute drive from the club.
- [IGA Manly Village](#) – IGA is the closest grocery store to RQYS located just 3 minute drive away, at the corner of Stratton Tce & Cambridge Parade.
- [Manly Village Medical](#) – Is the closest medical centre to RQYS, located at 25 Cambridge Parade a 2 minute drive away.
- Local Weather: The RQYS Weather Station can be found at:
<https://www.rqys.com.au/weather-station/>
- The Weather Station records from above the club Bay Lookout.
- BOM: Radar: <http://www.bom.gov.au/products/IDR663.loop.shtml>
- Marine Forecast: <http://www.bom.gov.au/qld/forecasts/moreton-bay.shtml>
- Other Popular forecasts:
- Predict Wind: <https://forecast.predictwind.com/table/>
- Seabreeze: <https://www.seabreeze.com.au/weather/wind-forecast/brisbane>
- WillyWeather: <https://wind.willyweather.com.au/qld/brisbane/brisbane.html>

SI ATTACHMENT A

Class	Class Flag	Course Area	Target Time (Minutes)	Time Limit (Minutes)	Finish Window (Minutes)
29er	Red Insignia, White Background	Alpha (A)	30	60	15
420	Black Insignia, White Background	Alpha (A)	30	60	15
Hobie 16	Black Insignia, Red Background	Alpha (A)	30	60	15
Nacra 15	Blue Insignia, White Background	Alpha (A)	30	60	15
Raceboard	Orange & Black Bic Techno Insignia, White Background	Bravo (B)	25	45	15
Techno Windsurfing		Bravo (B)	25	45	15
ILCA 6	Red Insignia, Green Background	Bravo (B)	40	60	15
ILCA 4	Red Insignia, Yellow Background	Bravo (B)	40	60	15
Flying 11	Blue Insignia, White Background	Bravo (B)	40	60	15
RS Feva	Pink & Black Feva Class Insignia, White Background	Charlie (C)	30	60	15
RS Quest Green Fleet	Code Flag E	Charlie (C)	30	60	15
Optimist Open	Black Insignia, White Background	Charlie (C)	30	60	15
Optimist Intermediate	White Insignia, Blue Background	Charlie (C)	30	60	20
Optimist Green	White Insignia, Green Background	Charlie (C)	20	50	20
Sabot	Blue Insignia, Orange Background	Charlie (C)	30	60	15
O'pen Skiff	Black Insignia, White Background	Charlie (C)	30	60	15
Pacer	White Insignia, Blue Background	Charlie (C)	30	60	15
Alpha Course Mixed	Yellow Flag	Alpha (A)	30	60	15
Charlie Course Mixed	Yellow Flag	Charlie (C)	30	60	15

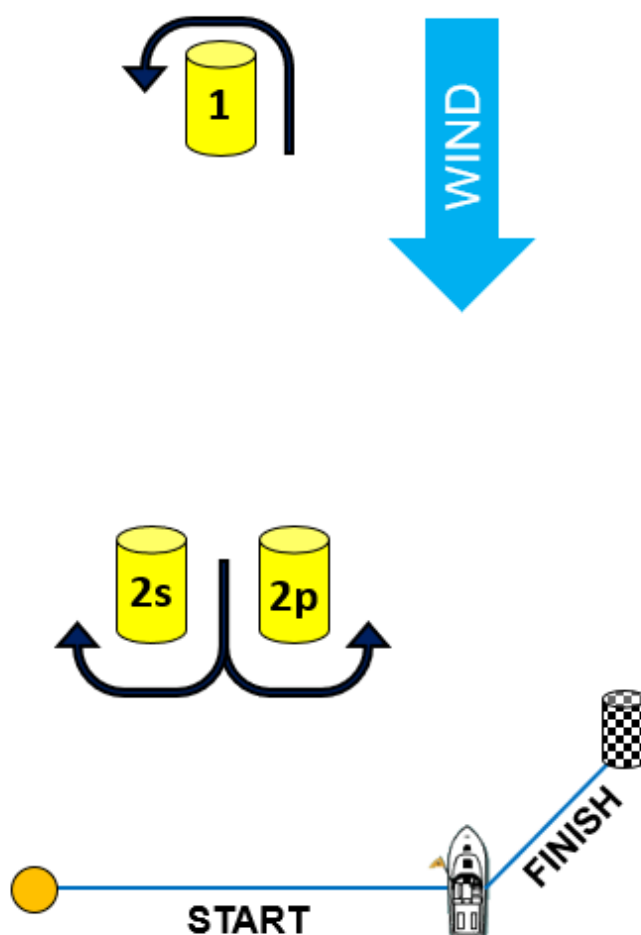
SI ATTACHMENT B



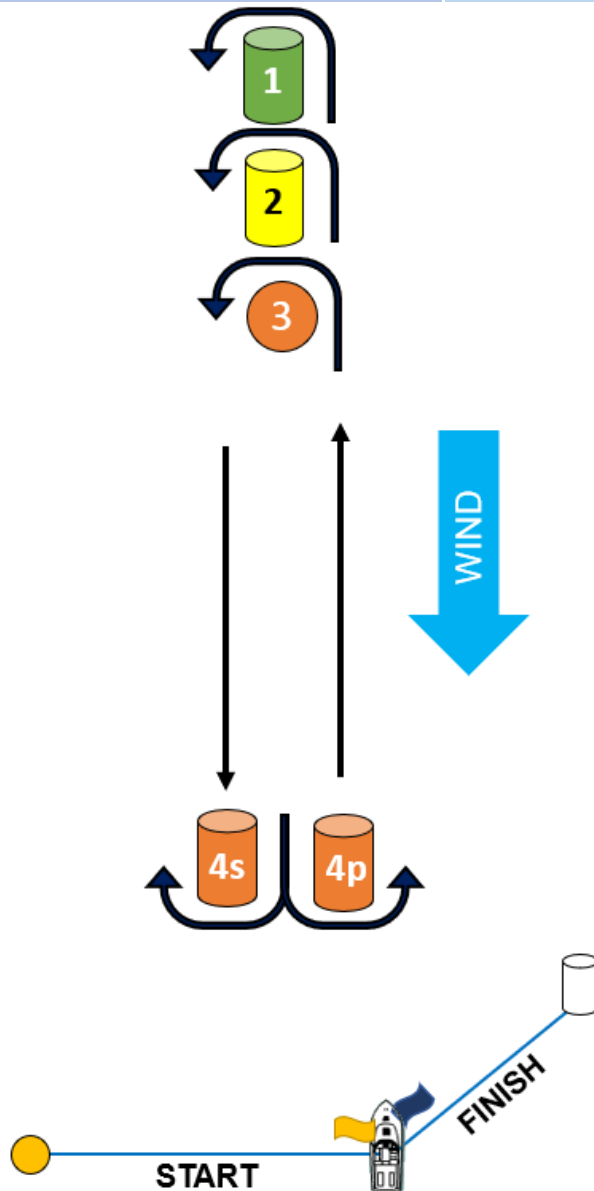
SI ATTACHMENT C

Course Alpha

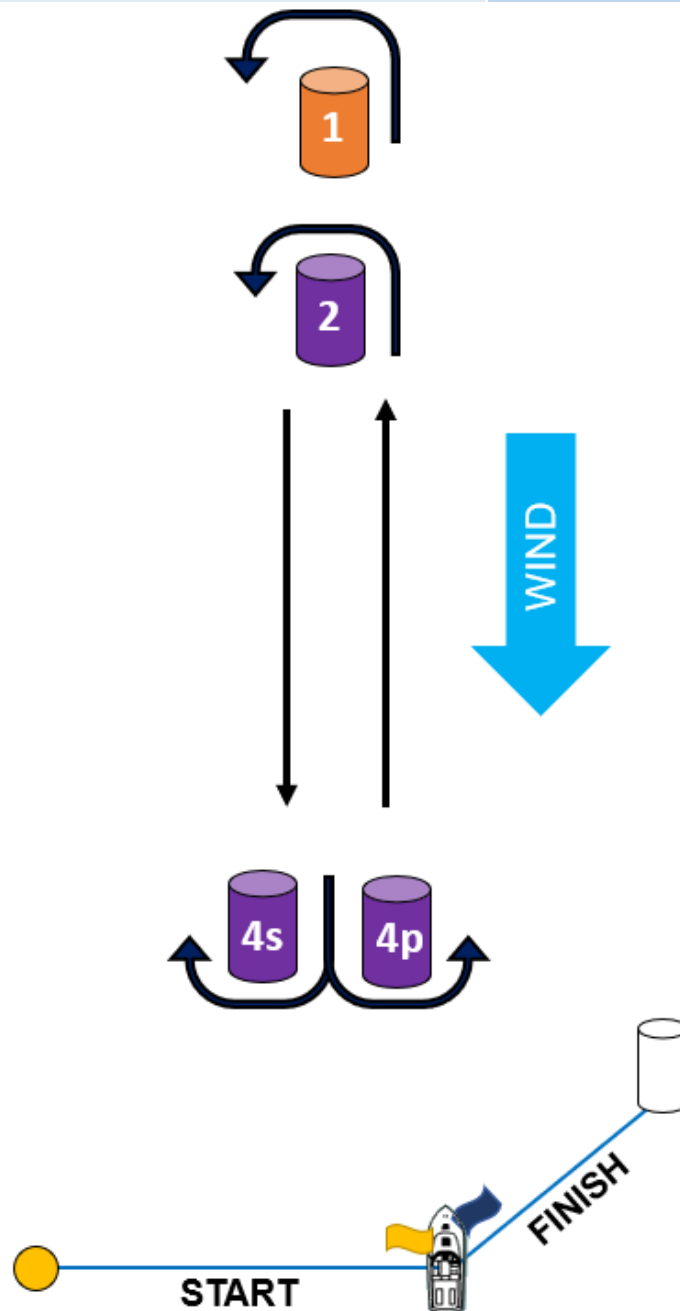
CODE	COURSE	MARKS DESCRIPTION
L1	Start – 1 – 2p – Finish	Mark 1: Yellow Inflatable
L2	Start – 1 – 2s/2p – 1 – 2p – Finish	Mark 2: Green Inflatable
L3	Start – 1 – 2s/2p – 1 – 2s/2p – 1 – 2p – Finish	Mark 2s/2p: Yellow Inflatables
LA1	Start – 2 – 4 – Finish	Start Pin: Orange Teardrop
LA2	Start – 2 – 4 – 2 – 4 – Finish	Finish Pin: White & Black Inflatable
LA3	Start – 2 – 4 – 2 – 4 – 2 – 4 – Finish	Change Mark Mark 1: Orange Inflatable Mark 2: Purple Inflatable



CODE	COURSE	MARKS DESCRIPTION
L1	Start – 1 – 4p – Finish	Mark 1: Green Inflatable
L2	Start – 1 – 4s/4p – 1 – 4p – Finish	Mark 2: Yellow Inflatable
L3	Start – 1 – 4s/4p – 1 – 4s/4p – 1 – 4p – Finish	Mark 3: Orange Teardrop
LA1	Start – 2 – 4p – Finish	Marks 4s/4p: Orange Inflatables
LA2	Start – 2 – 4s/4p – 2 – 4p – Finish	Start Pin: Orange Teardrops
LA3	Start – 2 – 4s/4p – 2 – 4s/4p – 2 – 4p – Finish	Finish Pin: White Inflatable
o1	Start – 3 – 4p – Finish	Change Mark Mark 1: Orange Inflatable Mark 2: Purple Inflatable
o2	Start – 3 – 4s/4p – 3 – 4p – Finish	
o3	Start – 3 – 4s/4p – 3 – 4s/4p – 3 – 4p – Finish	



CODE	COURSE	MARKS DESCRIPTION
L1	Start – 1 – 4p – Finish	Marks 1: Orange Inflatable
L2	Start – 1 – 4s/4p – 1 – 4p – Finish	Marks 2: Purple Inflatable
L3	Start – 1 – 4s/4p – 1 – 4s/4p – 1 – 4p – Finish	Marks 4s/4p: Purple Inflatables
LA1	Start – 2 – 4p – Finish	Start Pin: Orange Teardrops
LA2	Start – 2 – 4s/4p – 2 – 4p – Finish	Finish Pin: White Inflatable
LA3	Start – 2 – 4s/4p – 2 – 4s/4p – 2 – 4p – Finish	Change Mark Mark 1: White Inflatable Mark 2: Yellow Inflatable



SI ATTACHMENT D



SI ATTACHMENT E

