

RQYS Winter Series Courses 2024



Administered by the Royal Queensland Yacht Squadron (RQYS)
578 Royal Esplanade, MANLY, Queensland 4179
(07) 3396 8666 | sailing@rqys.com.au

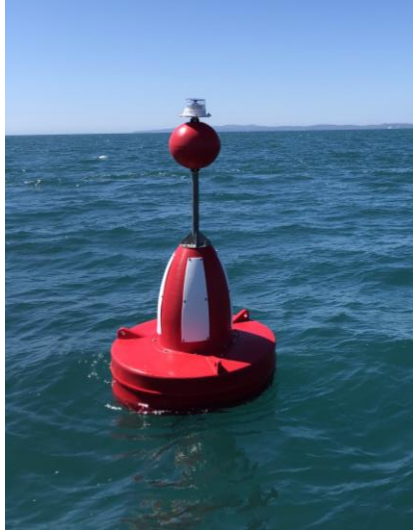


DESIGNATED MARKS USED FOR RACING

	Description	Approximate Position	
	Start/Finish – Inside Waterloo Bay East of the Manly Boat Harbour Leads		
CJP	Crawford James Pattison Beacon (Nth Cardinal)	27°24.9S	153°13.6E
CY	Yellow Buoy SE of Cleveland Point	27°30.9S	153°18.2E
DL	Douglas Light	27°29.5S	153°22.8E
EE	Eric Early Beacon	27°37.4S	153°24.2E
EPB	Empire Point Beacon	27°29.2S	153°16.6E
GIB	Goat Island Beacon FI Yellow 2s	27°31.1S	153°23.1E
GIR	Red Beacon NE of Green Island	27°24.8S	153°14.6E
HBG	Green Beacon (FI G 2.5s) W Horseshoe Bay	27°31.3S	153°21.2E
HBY	FI Y 4s Eastern End Horseshoe Bay	27°30.3S	153°22.4E
HL	Hanlon Light	27°28.2S	153°21.0E
HYR	Huybers Beacon	27°26.9S	153°14.7E
JRB	Jeay's Reef Buoy - North Cardinal Beacon	27°18.8S	153°14.9E
LLS	Lockyer Light South Cardinal Beacon	27°26.4S	153°14.5E
LM1	Bay Laid Mark, located on a bearing from the Start Boat and a nominated distance OR at a GPS position Communicated by the RC from the Start Boat.		
MBG	Green Beacon off Maroom Bank	27°27.03S	153°19.5E
MHB	Merv Hazell Beacon	27°33.6S	153°24.1E
MIE	East Cardinal Beacon off Mud Island	27°20.2S	153°16.7E
MIGW	Mud Island Green	27°20.5S	153°13.6E
MISG	Mud Island Southern Green	27°21.4S	153°15.4E
MIWG	2 x West Cardinal Beacons off Mud Island	27°19.9S	153°14.0E
ML	Myora Light	27°28.4S	153°24.3E
NJW	Norman J Wright Beacon (West Cardinal)	27°25.1S	153°13.2E
NRB	Green Beacon (FI G 4s) Naval Reserve Banks	27°27.6S	153°20.5E
OMM	Outer Measured Mile	27°15.0S	153°15.1E
PIG	Green Beacon West of Peel Island	27°30.26S	153°19.4E
PPG	Green Beacon (FI G 2.5s) North of Potts Point	27°34.3S	153°21.8E
SAY	Sand Hills Yellow	27°16.86S	153°22.9E
SHN	North Cardinal Beacon St Helena Island	27°22.2S	153°14.2E
SHR	Red Buoy East of St Helena Island	27°23.2S	153°15.2E
SHS	South Cardinal Beacon St Helena Island	27°24.4S	153°14.4E
SHG	Green Bouy West of St Helena Island	27°23.3S	153°13.4E
SHNR	Red Bouy North West of St Helena Island	27°22.0S	153°13.9E
SWR	Green Beacon (QG) S-W Rocks	27°31.3S	153°20.6E
TBR	Thorpe Beacon NW of King Island	27°27.1S	153°13.7E

DESIGNATED FIXED MARKS USED FOR RACING

*As of the 2023/24 Season MSQ has laid 4 fixed marks referred to as “Rec Marks”
The “Rec Marks” are floating (Red & White) Safe Water Marks.*



Description		Approximate Position	
SHRM	Sand Hills Rec Mark	27°22.6S	153°18.1E
GERM	Green Island East Rec Mark	27°25.6S	153°15.5E
HBRM	Hope Banks Rec Mark	27°25.8S	153°17.8E
PRM	Peel NW Rec Mark	27°27.9S	153°18.4E

RQYS Winter Course Booklet

Course Number	Course Marks (Rounding Side)
1	Start – NJW (S) – CJP (S) – SHS (P) – SHRM (S) – GERM (P) – HBRM (S) – PRM (S) – HYR (P) – Finish
2	Start – LLS (P) – HBRM (S) – PRM (S) – HYR (P) – Finish
3	Start – LLS (P) – HBRM (S) – PRM (S) – GERM (S) – HBRM (S) – PRM (S) – HYR (P) – Finish
4	Start – LLS (P) – HBRM (S) – PRM (S) – GERM (S) – HBRM (P) – GIR (P) – CJP (P) – NJW (P) - Finish
5	Start – LLS(P) – PRM (P) – HBRM (P) – GIR (P) – CJP (P) – NJW (P) – Finish
6	Start – LLS (P) – PRM (P) – HBRM (P) – GERM (P) – HBRM (P) – GIR (P) – CJP (P) – NJW (P) - Finish
7	Start – LLS (P) – HBRM (S) – PRM (S) – HBRM (S) – PRM (S) – GERM (P) – LLS (S) - Finish
8	Start – LLS (P) – LM1 (S) – PRM (P) – GERM (S) – HBRM (S) – LM1 (S) – GERM (S) – LM1 (S) – LLS (S) - Finish
9	Start – NJW (S) – SHS (P) – SHR (P) – SHN (P) – MIWG (S) – JRB (S) – MIE (S) – SHR (S) – SHS (S) - NJW (P) – Finish
10	Start – NJW (S) – SHG (S) – SHNR (P) – MIWG (S) – JRB (S) – MIE (S) – SHR (S) – SHS (S) - NJW (P) – Finish
11	Start – NJW (S) – SHG (S) – SHNR (P) – SHN (S) – SHR (S) – SHS (S) – NJW (P) - Finish
12	Start – NJW (S) – CJP (S) – GIR (S) – GERM (S) – LLS (S) – Finish
13	Start – LLS (P) – GERM (S) – HBRM (P) – SHRM (P) – SHS (S) – NJW (P) – Finish
14	Start – LLS (P) – GERM (S) – HBRM (P) – GIR (P) – CJP (P) – NJW (P) – Finish
15	Start – NJW (S) – SHS (P) – SHRM (S) – GERM (S) – GIR (P) – CJP (P) – NJW (P) - Finish
16	Start – NJW (S) – SHS (P) – SHR (S) – GERM (S) – GIR (P) – CJP (P) – NJW (P) - Finish
17	Start – LLS (P) – PRM (P) – GERM (S) – HBRM (S) – LLS (S) - Finish
18	Start – HYR (S) – PRM (P) – GERM (P) – LLS (S) – Finish
19	Start – LLS (P) – GERM (P) – SHR (S) – HBRM (S) – GERM (P) – LLS (S) – Finish
20	Start – LLS (P) – GERM (P) – SHR (S) – HBRM (S) – LLS (S) – Finish

Course Book Supplementary Sailing Instructions:

1 – The Use of an “X” Mark (a mark set at 90 degrees to the Start Line, usually upwind) is indicated by the flying of a Green or Red flag on the Start Boat, this flag indicates the rounding of the “X” Mark and shall be inserted in the Course Mark list in between the Start and the first mark of the course.

2 – All Starts are assumed to be inside Waterloo Bay. Where the RC wishes to run a Start East of Green Island the Race Committee may advance the course up to the point at which the Start Line leaves Waterloo Bay by flying an L flag and indicating the next mark on a board on the back of the boat. In this instance the RC need only signal the course and the next mark of the course, all previous marks are to be disregarded. [E.g. Course 11 would become Start - ~~NJW (S) – CJP (S) – GIR (S)~~ – HBRM (S) – HL (S) – HBY (P) – HBG (S) – SWR (S) – HYR (P) – Finish]

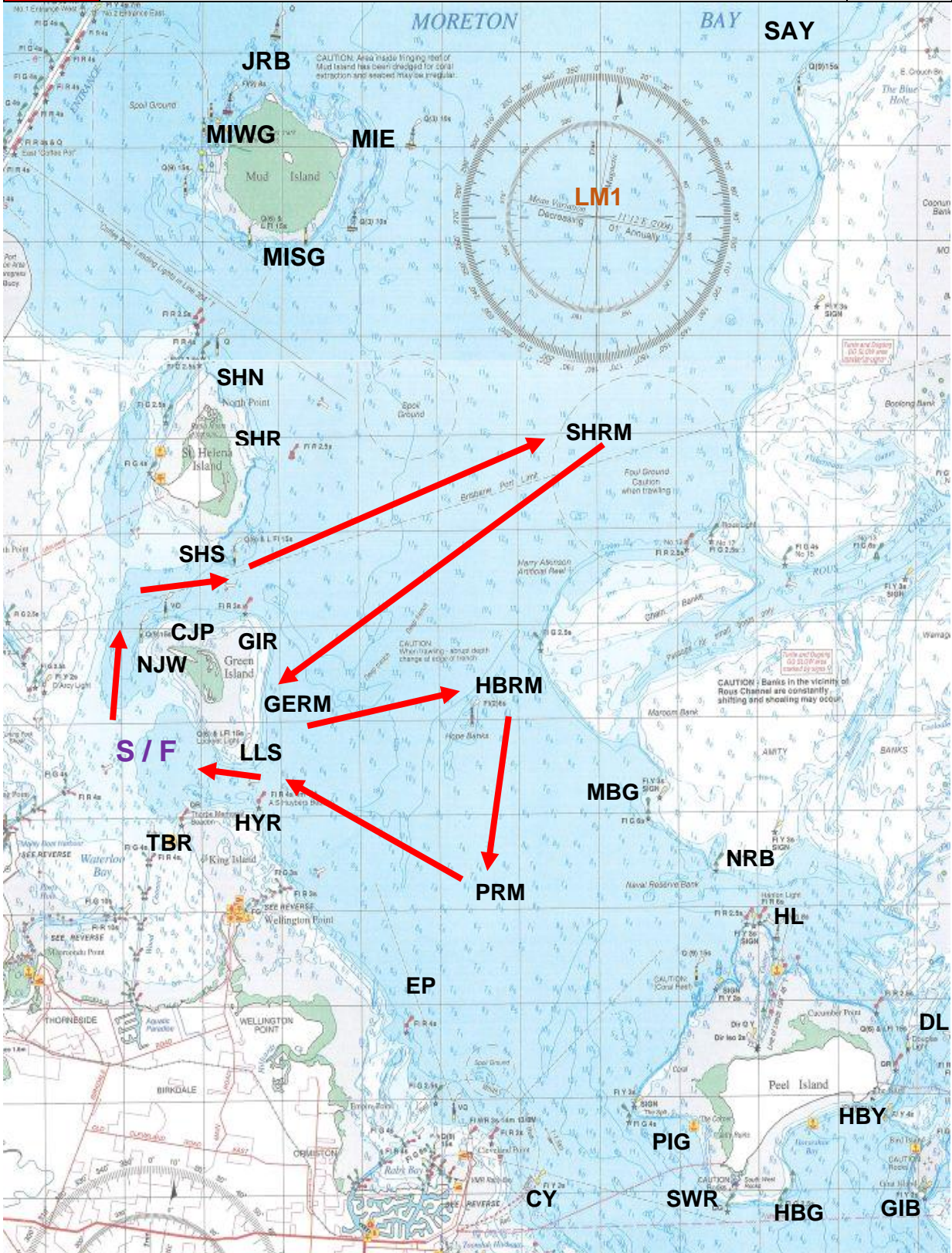
3 – Where Course Book SSI's 1 and 2 are to operate together the Board need only indicate the next Fixed or Laid Mark, the X mark being indicated by the flying of Green or Red flags.

4 – Where the Race Committee wish to run these courses as a “Reverse” they shall indicated the course number followed by a prominent R and indicate as such on Radio. The course shall observe all marks in the opposite order and with the opposing rounding.

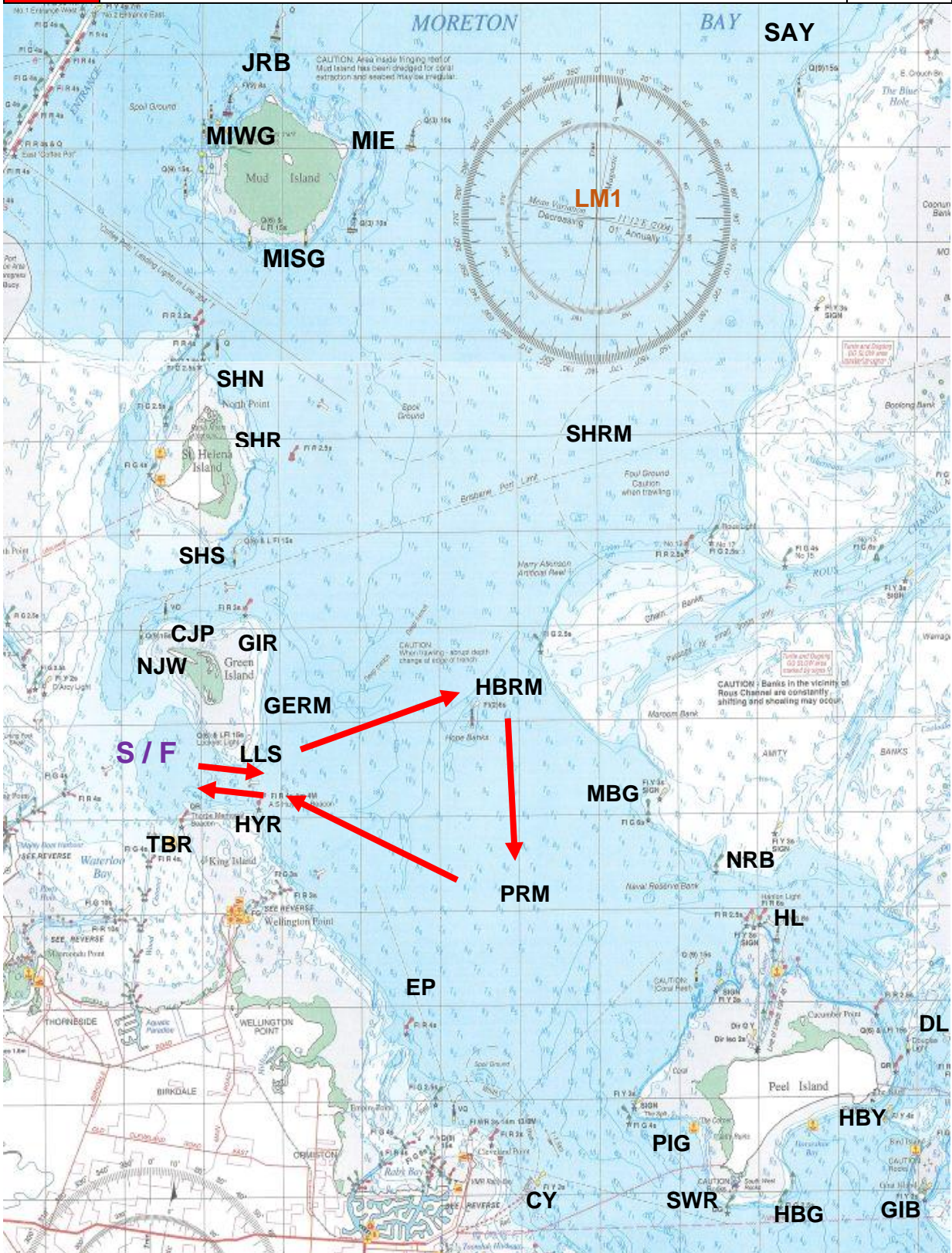
EXAMPLE Course 1: Start – NJW (S) – CJP (S) – SHS (P) – SHR (S) – HBRM (S) – SHR (S) – HBRM (S) – LLS (S) – Finish.

RQYS Winter Course Booklet

1	Start – NJW (S) – CJP (S) – SHS (P) – SHRM (S) – GERM (P) – HBRM (S) – PRM (S) – HYR (P) – Finish	19.8
---	---	------

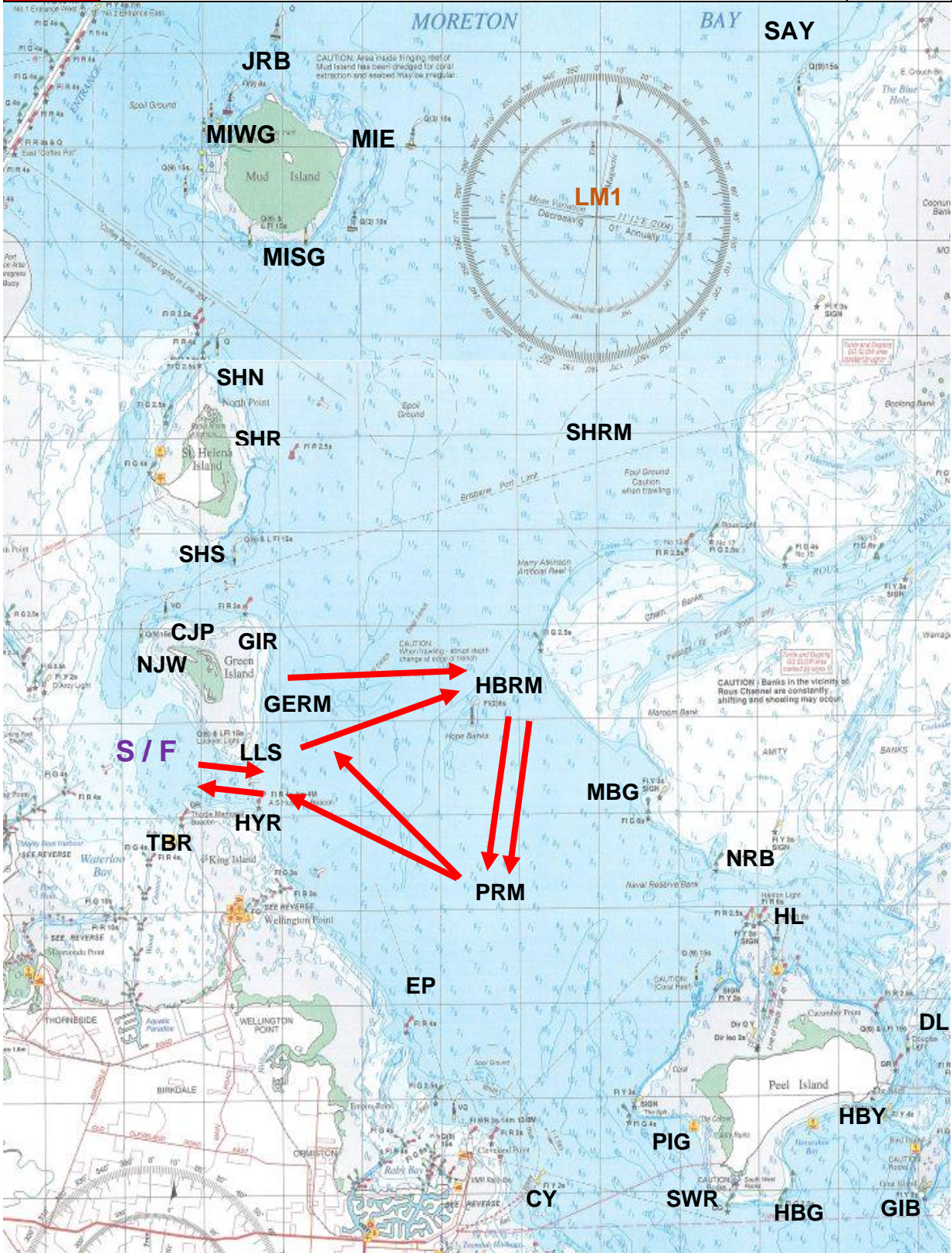


2	Start – LLS (P) – HBRM (S) – PRM (S) – HYR (P) – Finish	10.7
---	---	------

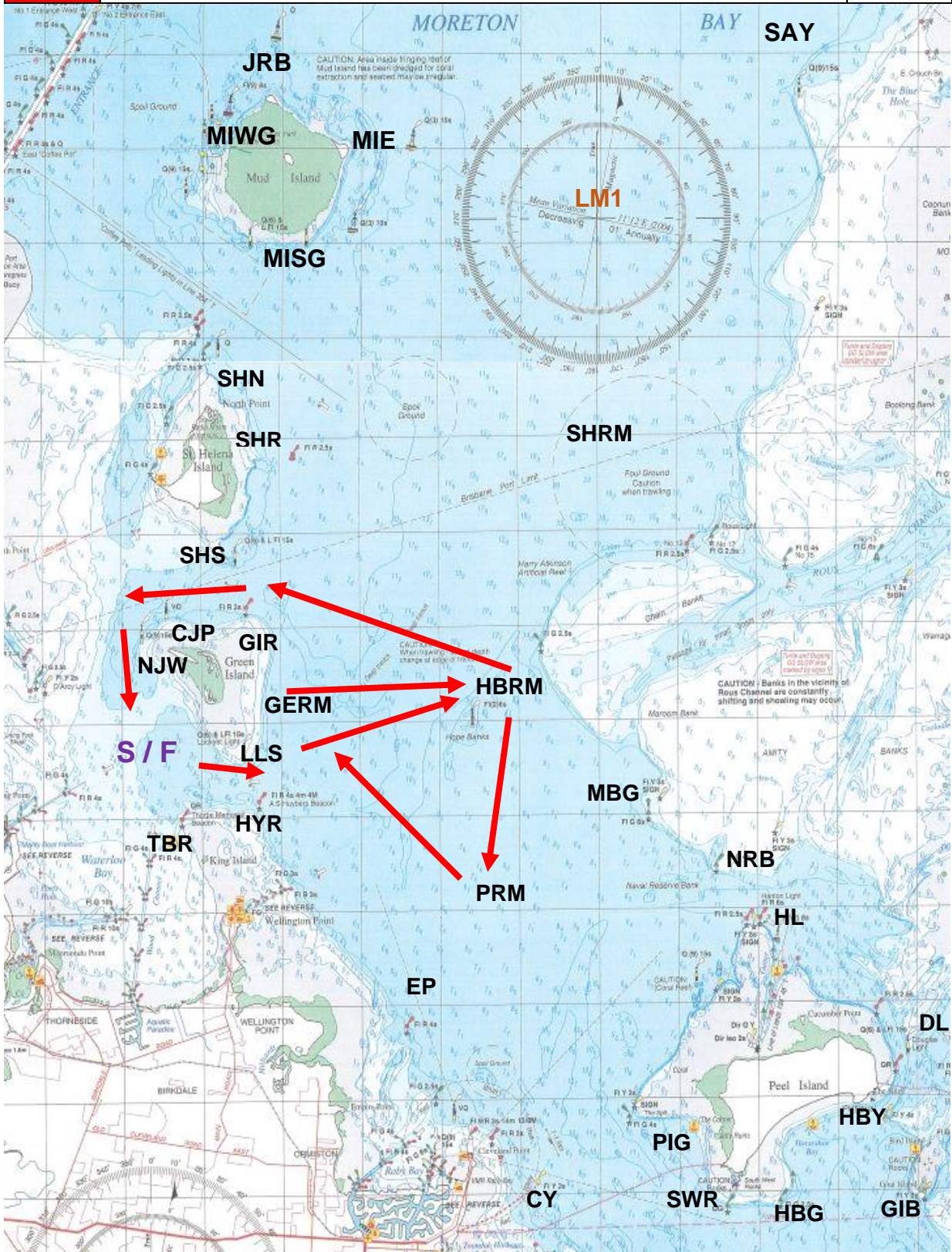


RQYS Winter Course Booklet

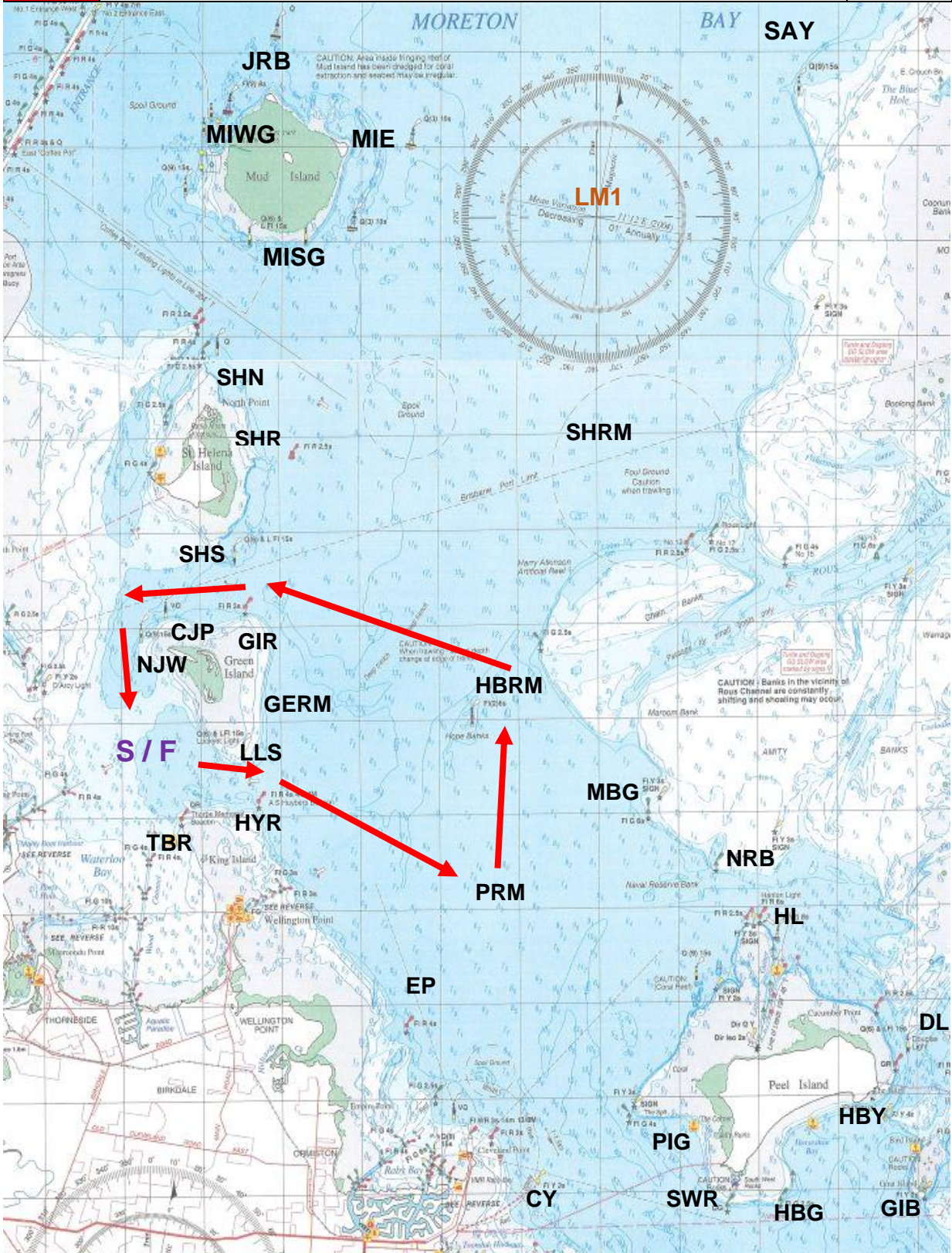
3	Start – LLS (P) – HBRM (S) – PRM (S) – GERM (S) – HBRM (S) – PRM (S) – HYR (P) – Finish	18.5
---	---	------



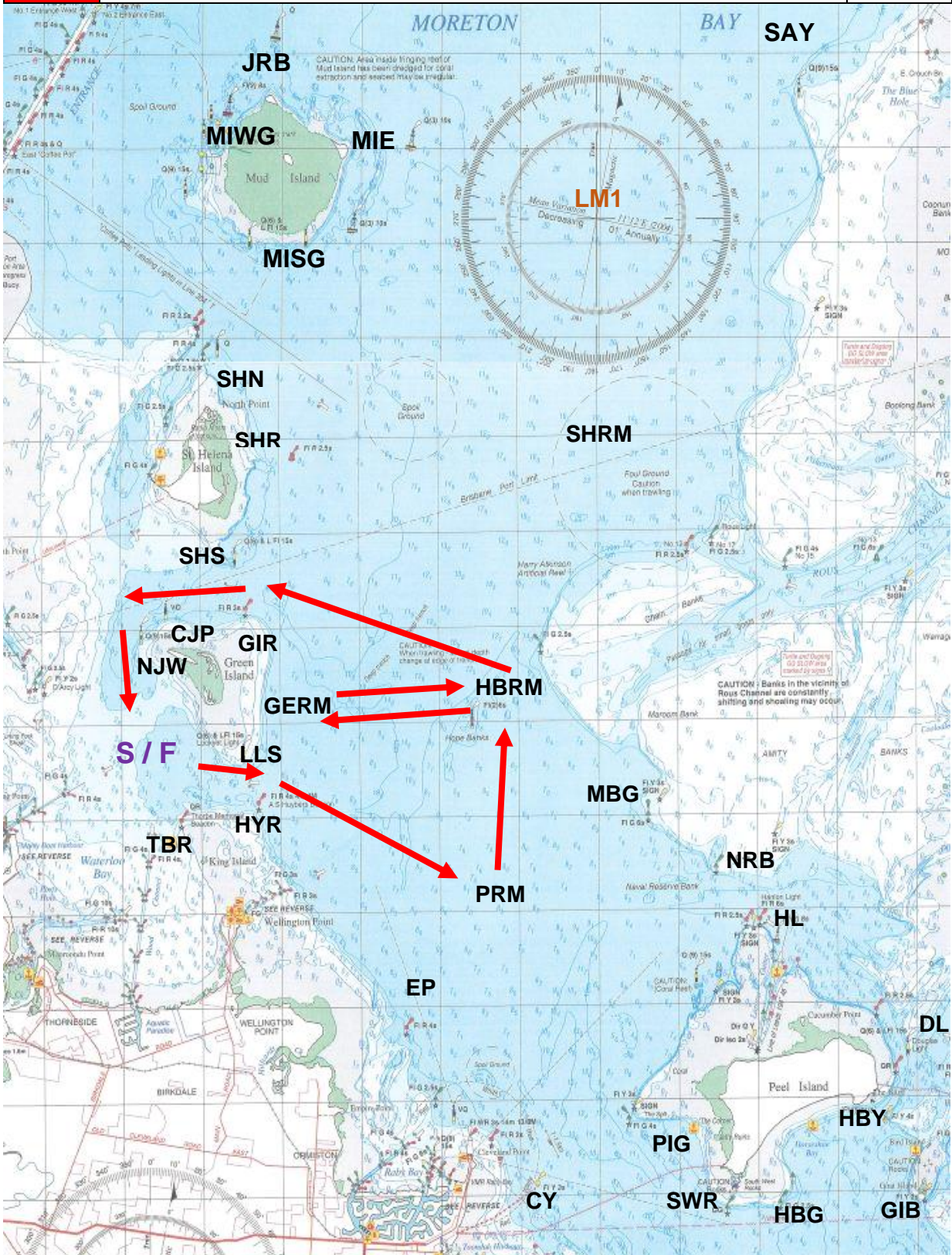
4	Start – LLS (P) – HBRM (S) – PRM (S) – GERM (S) – HBRM (P) – GIR (P) – CJP (P) – NJW (P) – Finish	17
---	---	----



5	Start – LLS (P) – PRM (P) – HBRM (P) – GIR (P) – CJP (P) – NJW (P) - Finish	12
---	---	----

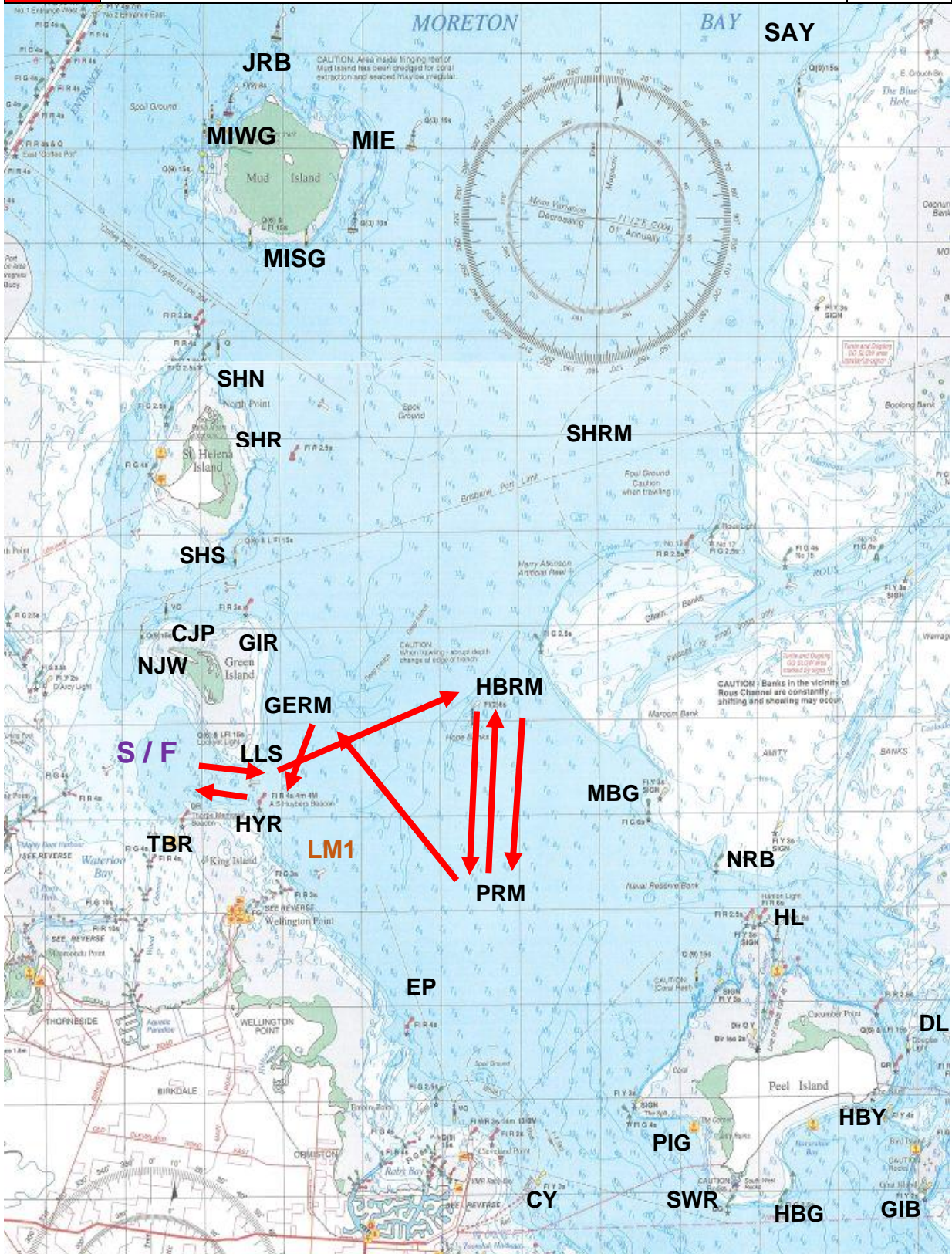


6	Start – LLS (P) – PRM (P) – HBRM (P) – GERM (P) – HBRM (P) – GIR (P) – CJP (P) – NJW (P) - Finish	17
---	---	----

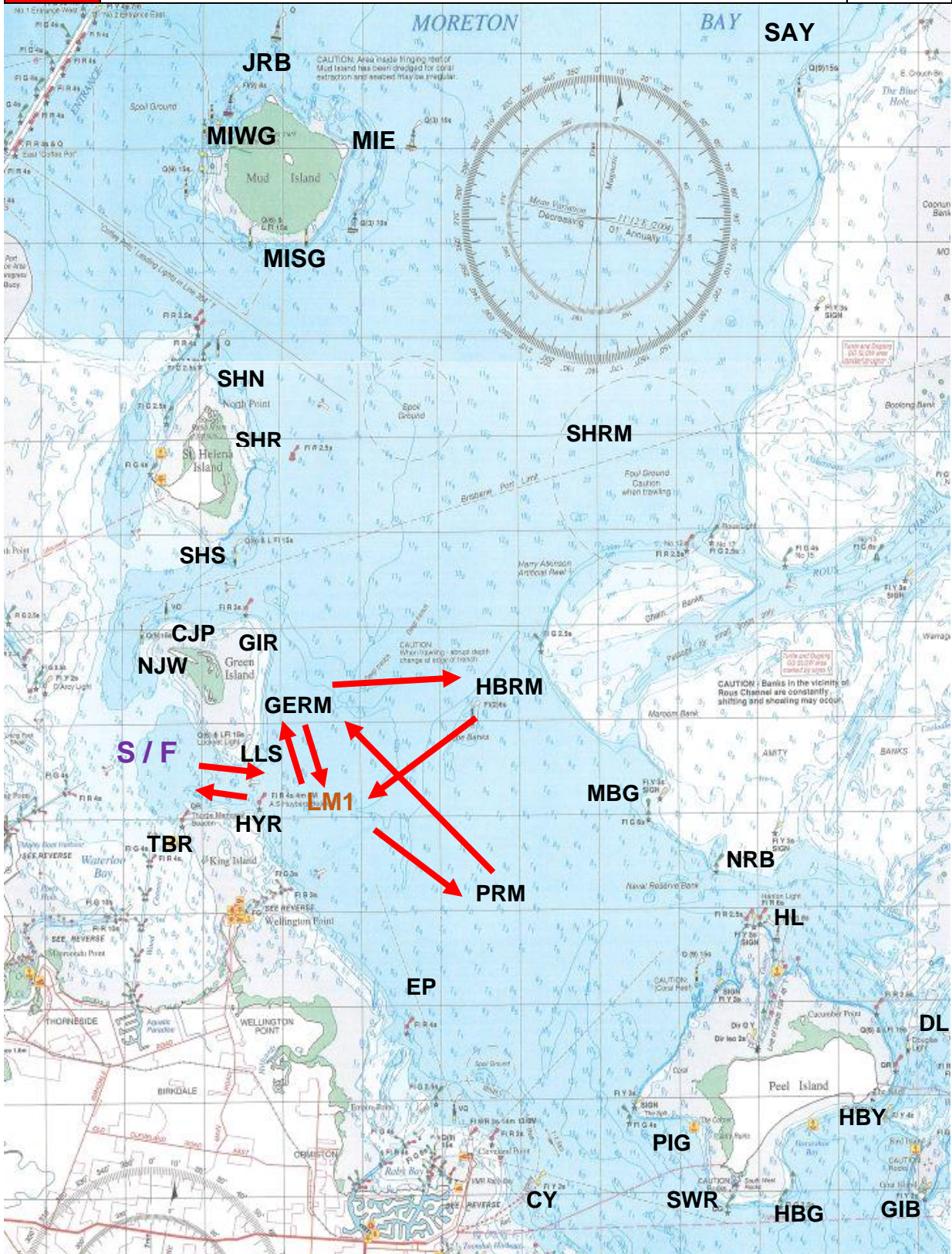


RQYS Winter Course Booklet

7	Start – LLS (P) – HBRM (S) – PRM (S) – HBRM (S) – PRM (S) – GERM (P) – LLS (S) – Finish	18
---	---	----

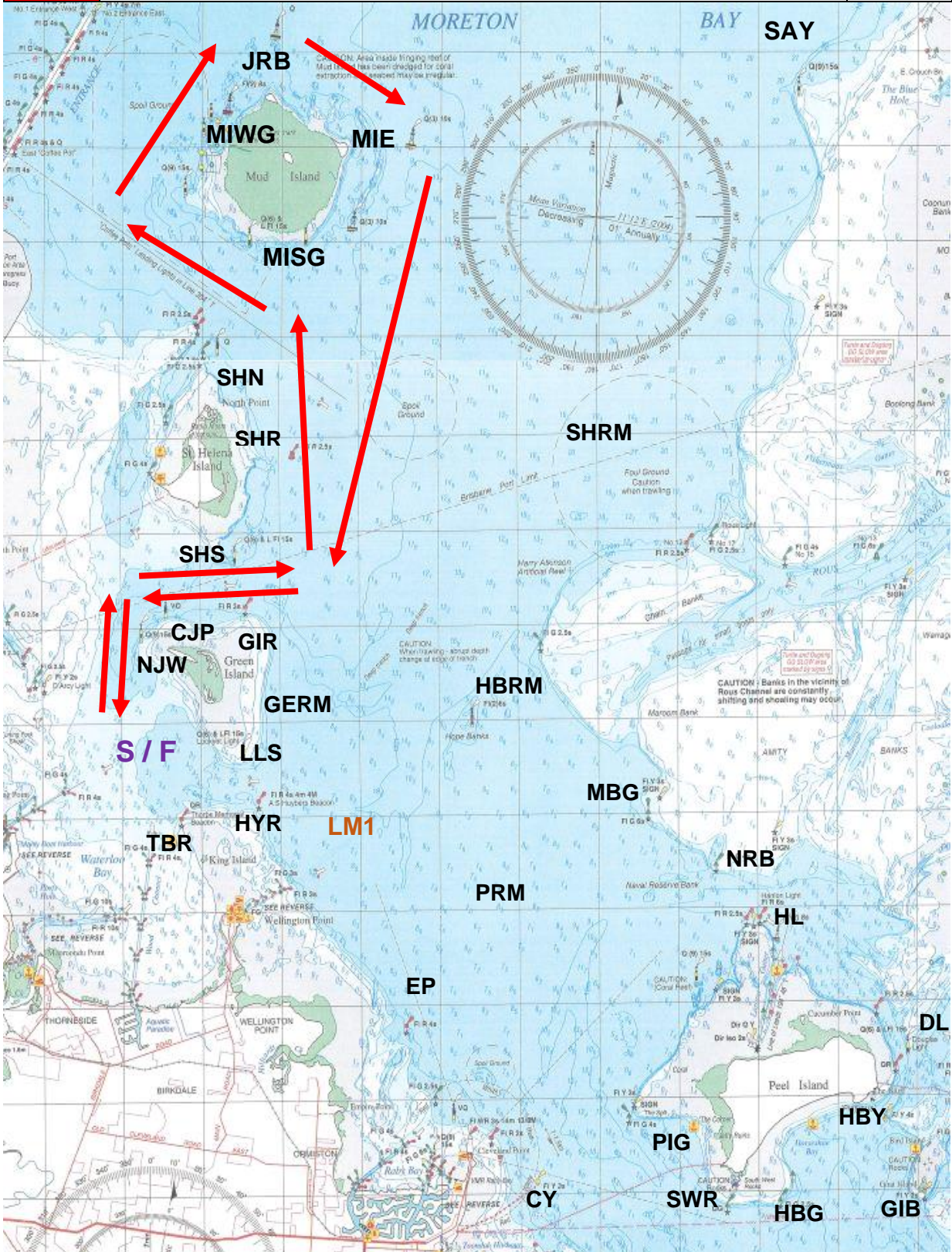


8	Start – LLS (P) – LM1 (S) – PRM (P) – GERM (S) – HBRM (S) – LM1 (S) – GERM (S) – LM1 (S) – LLS (S) – Finish	17
---	---	----



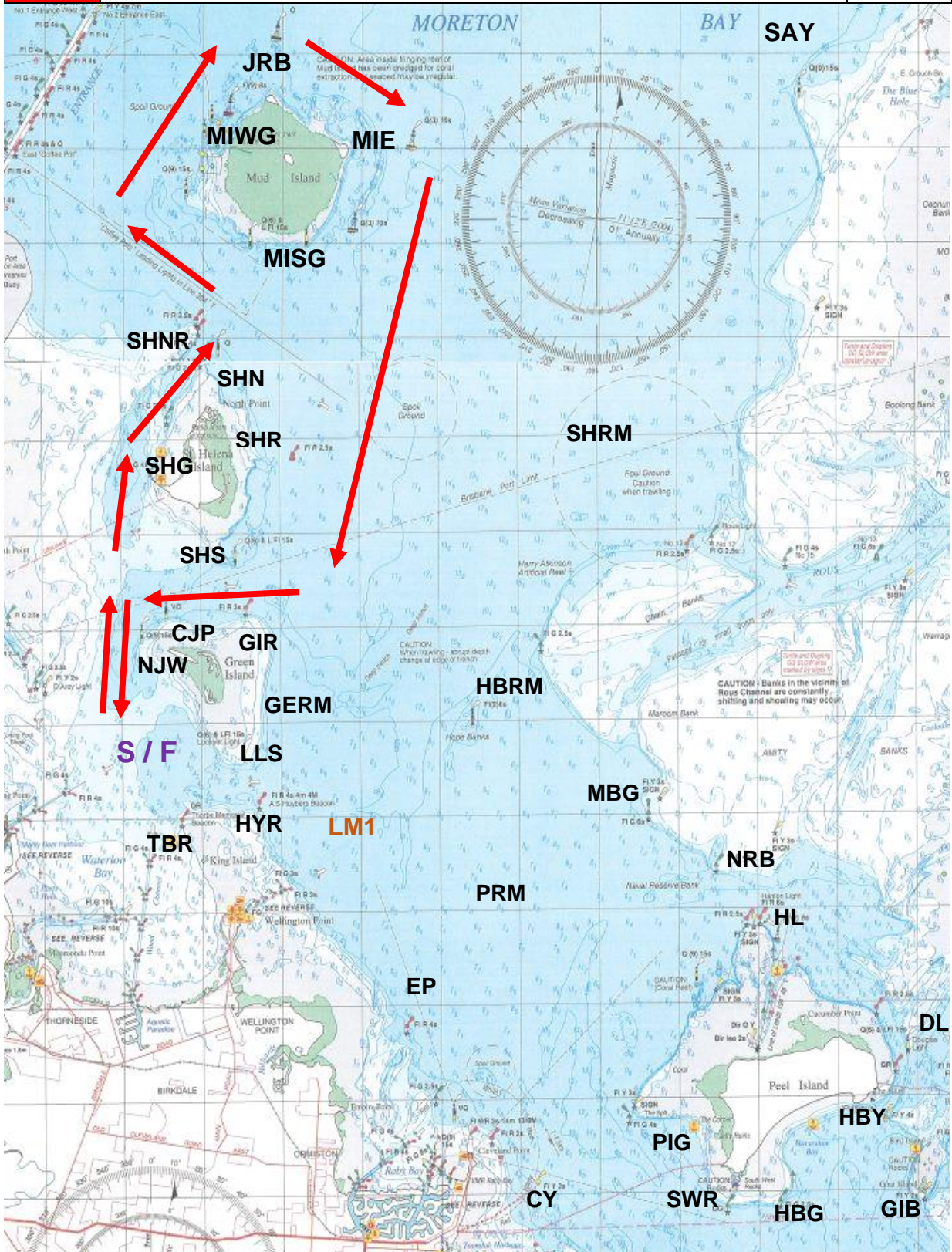
RQYS Winter Course Booklet

9	Start – NJW (S) – SHS (P) – SHR (P) – SHN (P) – MIWG (S) – JRB (S) – MIE (S) – SHR (S) – SHS (S) - NJW (P) – Finish	21
---	---	----



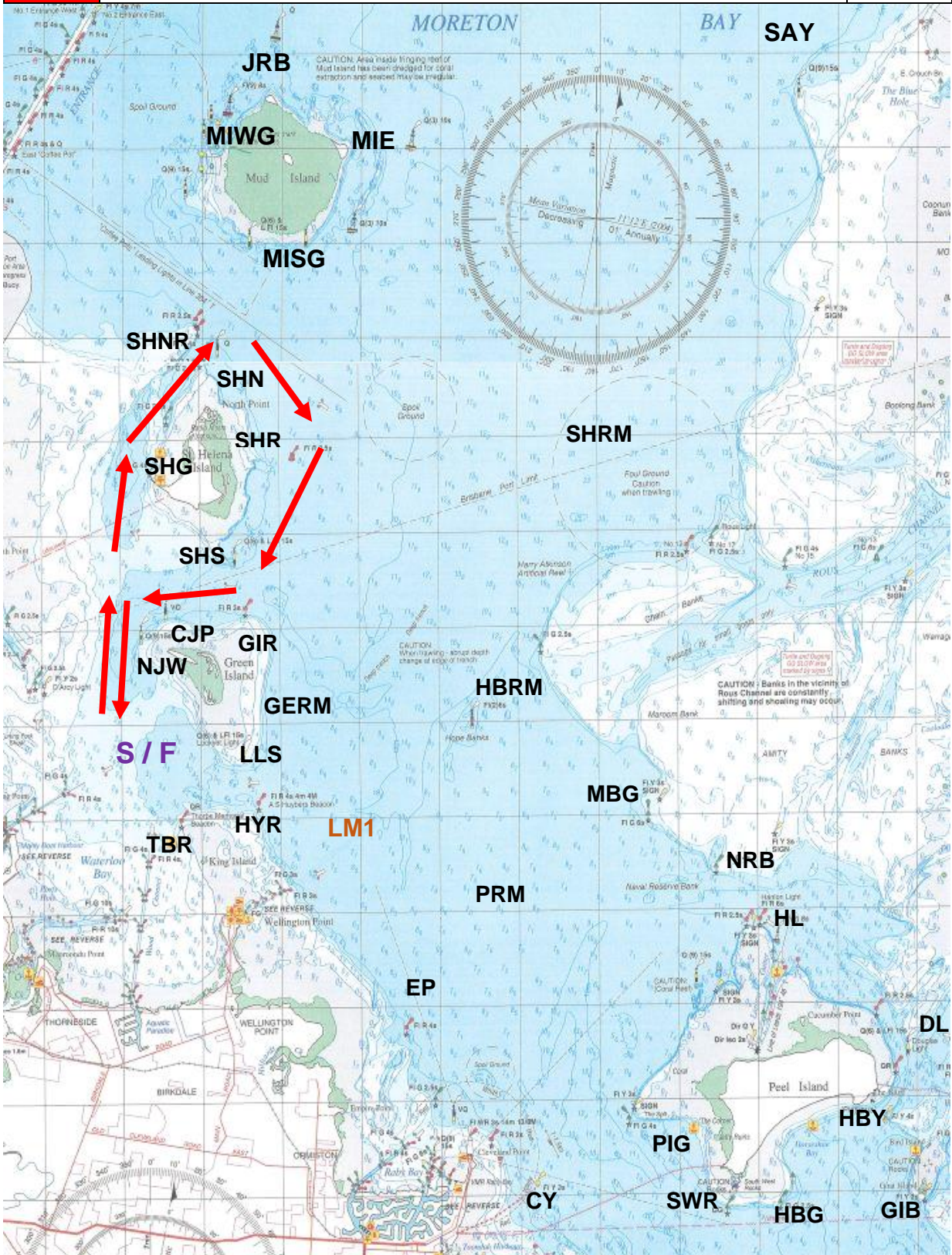
RQYS Winter Course Booklet

10	Start – NJW (S) – SHG (S) – SHNR (P) – MIWG (S) – JRB (S) – MIE (S) – SHR (S) – SHS (S) - NJW (P) – Finish	18
----	--	----

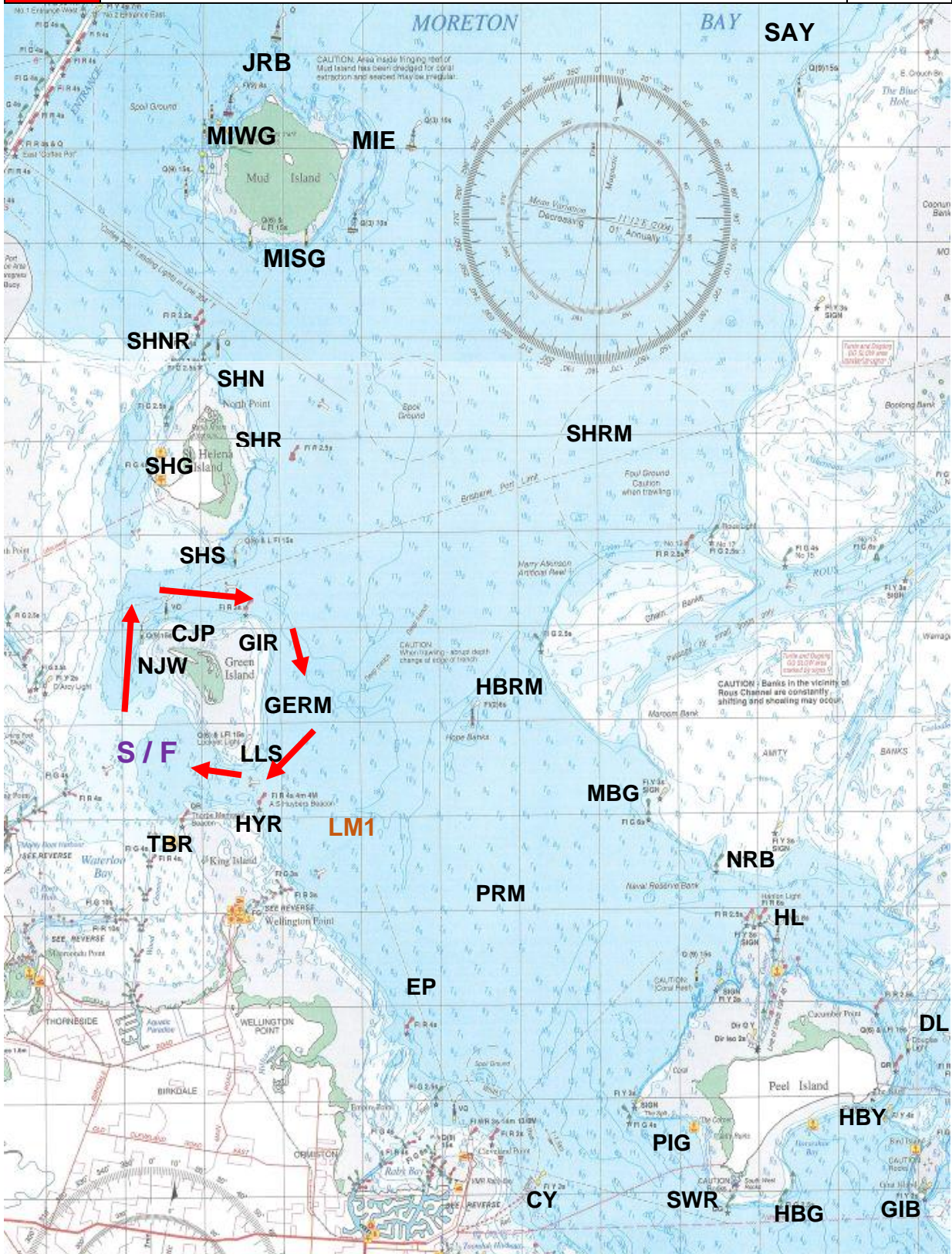


RQYS Winter Course Booklet

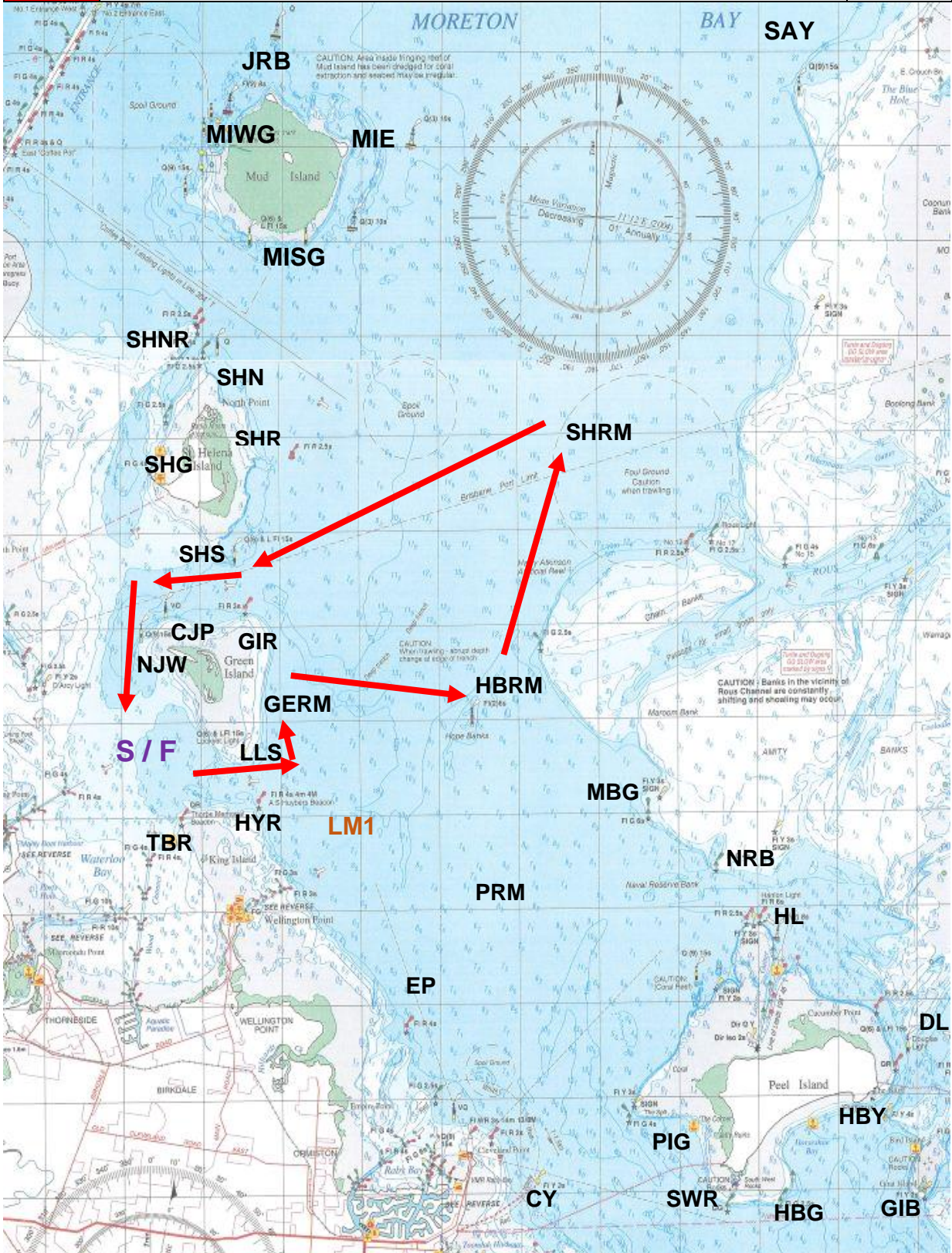
11	Start – NJW (S) – SHG (S) – SHNR (P) – SHN (S) – SHR (S) – SHS (S) – NJW (P) – Finish	10.5
----	---	------



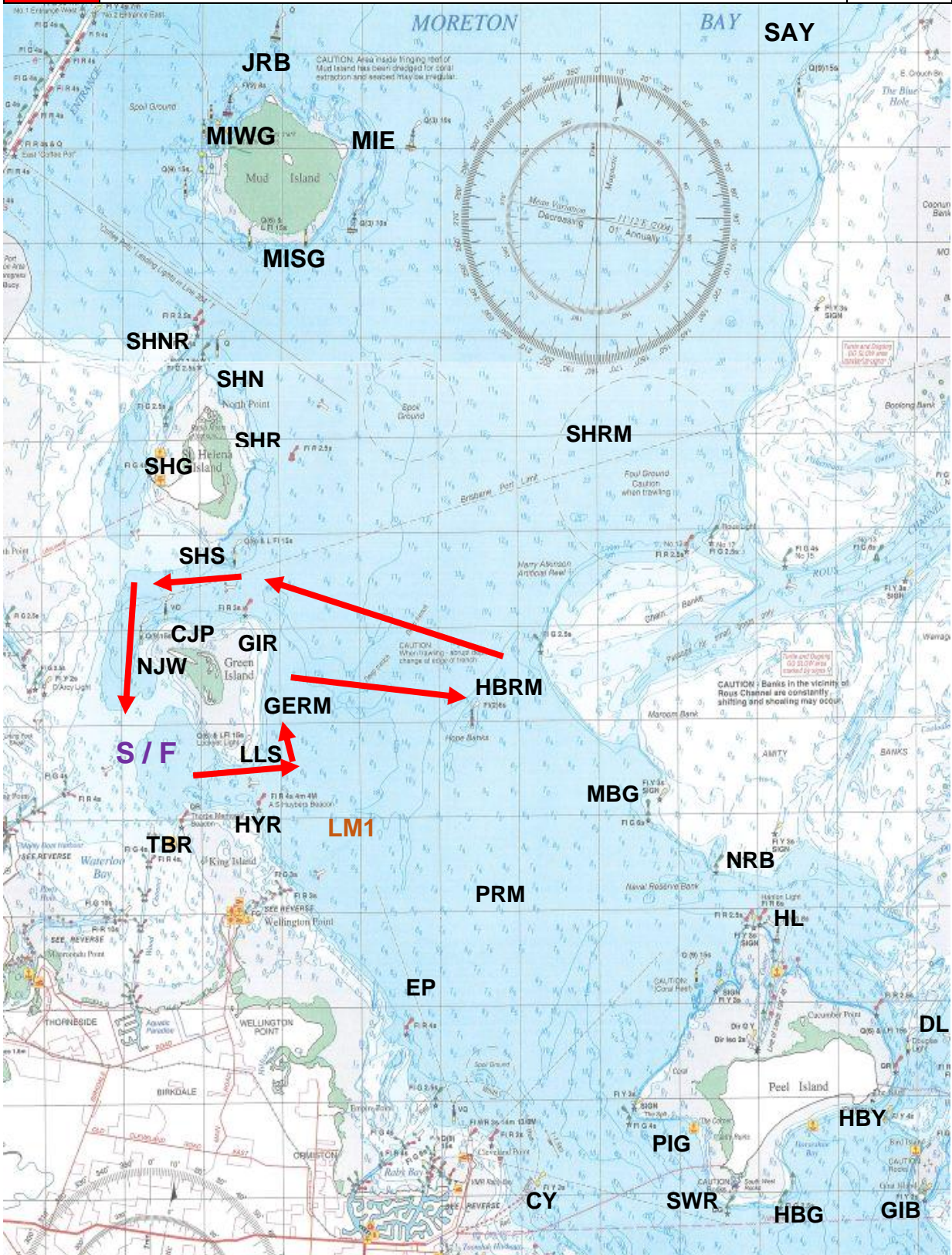
12	Start – NJW (S) – CJP (S) – GIR (S) – GERM (S) – LLS (S) – Finish	6
----	---	---



13	Start – LLS (P) – GERM (S) – HBRM (P) – SHRM (P) – SHS (S) – NJW (P) – Finish	14
----	---	----

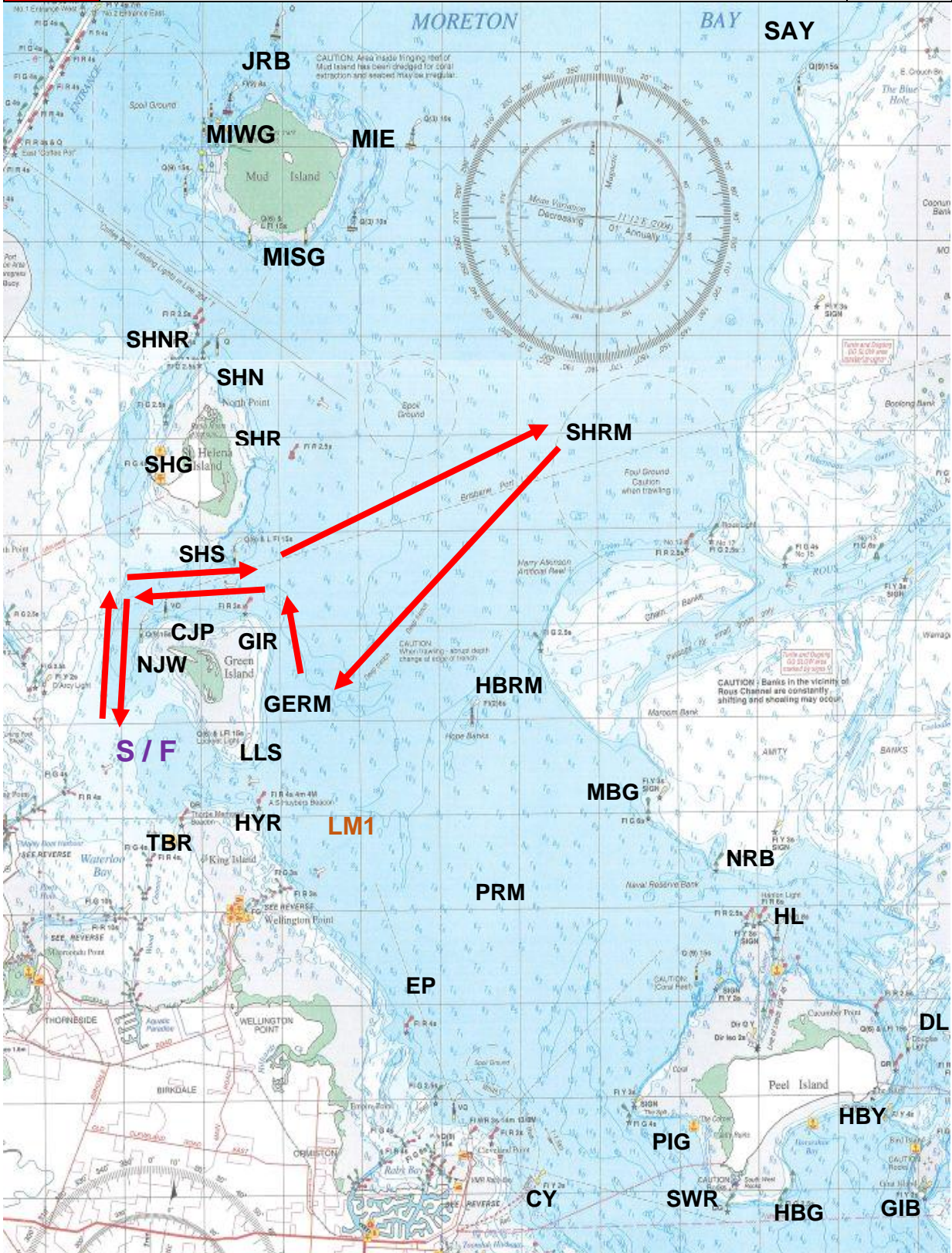


14	Start –LLS (P) – GERM (S) – HBRM (P) – GIR (P) – CJP (P) – NJW (P) – Finish	10
----	---	----



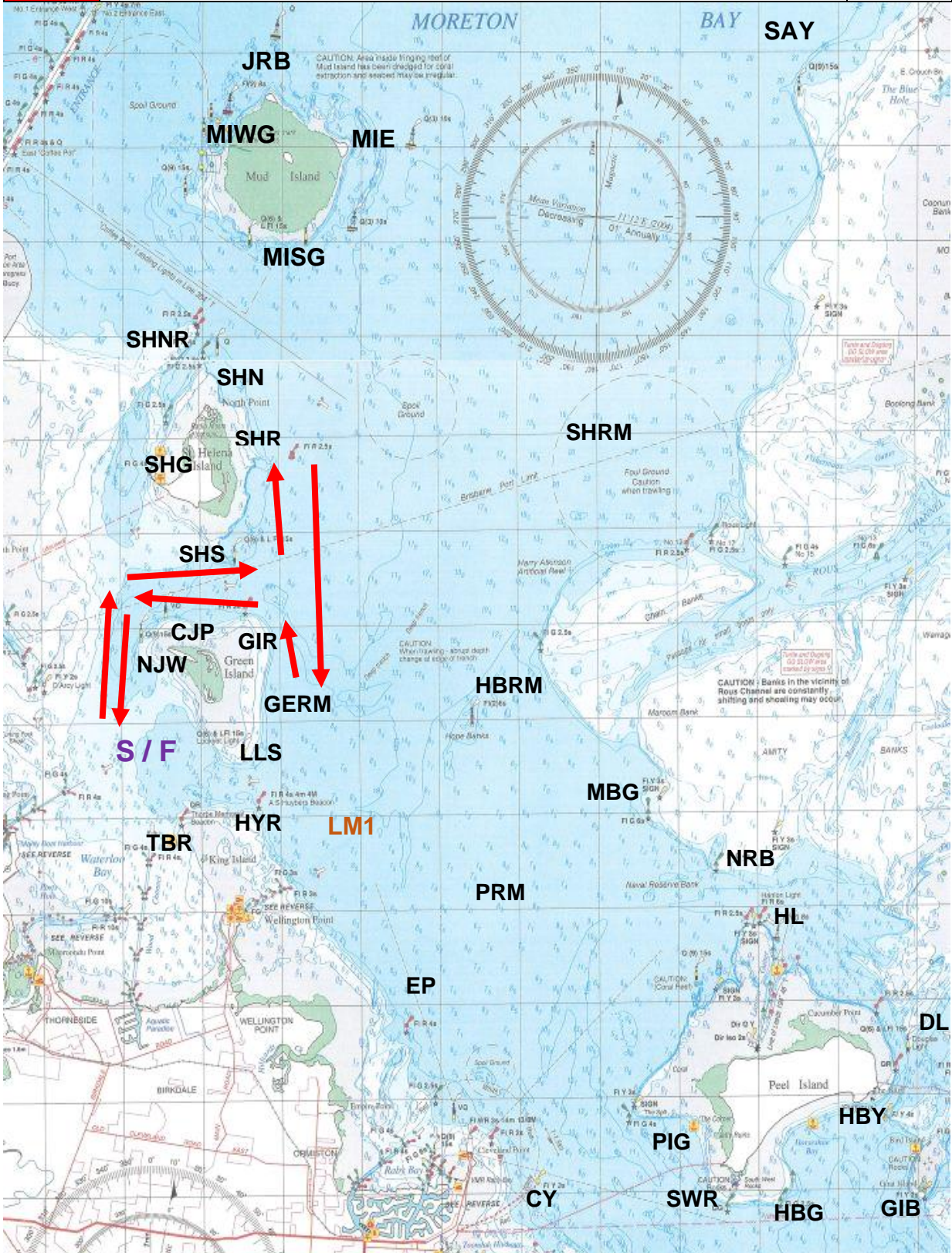
RQYS Winter Course Booklet

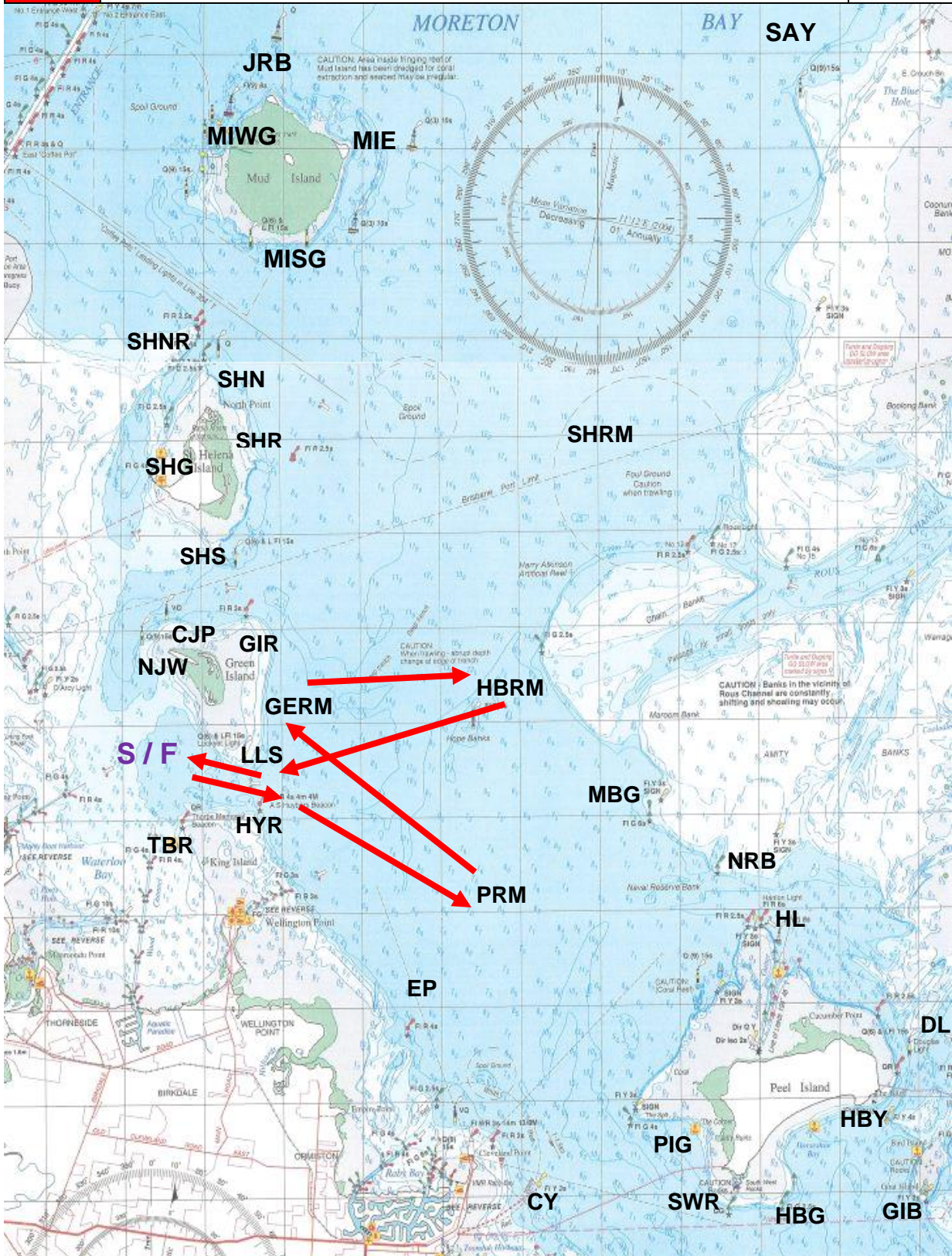
15	Start – NJW (S) – SHS (P) – SHRM (S) – GERM (S) – GIR (P) – CJP (P) – NJW (P) - Finish	14
----	---	----

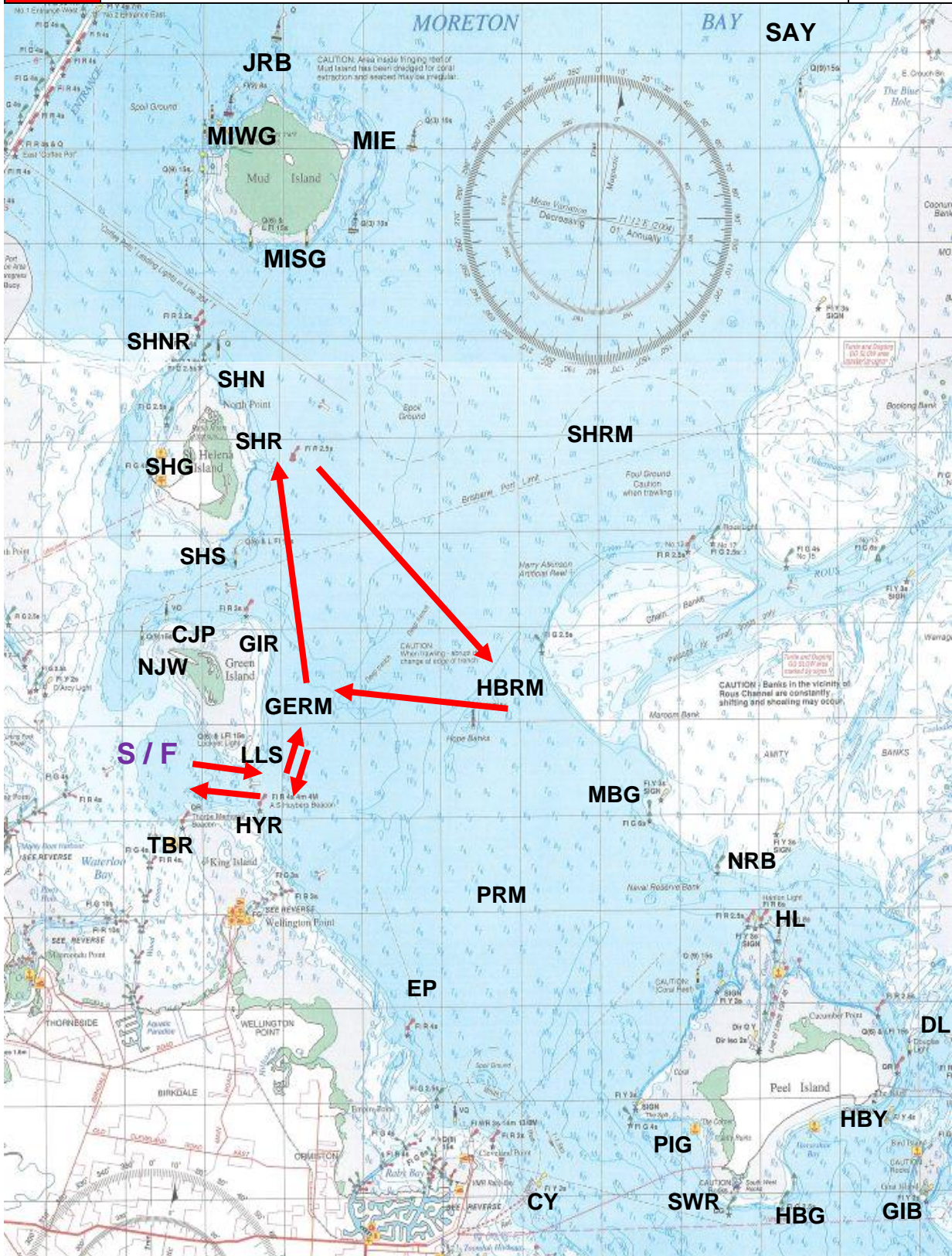


RQYS Winter Course Booklet

16	Start – NJW (S) – SHS (P) – SHR (S) – GERM (S) – GIR (P) – CJP (P) – NJW (P) - Finish	10
----	--	----







20	Start – LLS (P) – GERM (P) – SHR (S) – HBRM (S) – LLS (S) – Finish	12
----	--	----

