



**03<sup>rd</sup> – 8<sup>th</sup> May 2024**

# **SAILING INSTRUCTIONS**

## **(SI)**

**Including Amendment 1**

Organising Authority  
ROYAL QUEENSLAND YACHT SQUADRON LTD  
578 Royal Esplanade, Manly, QLD 4179

*The notation '[NP]' in a rule of the sailing instructions (SIs) means that a boat may not protest another boat for breaking that rule. This changes RRS 60.1(a).*

*The notation '[DP]' in a rule of the sailing instructions (SI's) means that a protest committee can award a penalty less than disqualification (including no penalty) at their discretion. This changes Rule 64.2*

## **1. RULES**

- 1.1. The event is governed by the rules as defined in The Racing Rules of Sailing.
- 1.2. The Australian Sailing prescriptions and special regulations category 5 apply.
- 1.3. Each boat shall be crewed by at least two persons over the age of 19.
- 1.4. Appendix T – Arbitration will apply.
- 1.5. Where there is a difference between the Notice of Race (NoR) and the Sailing Instructions (SI) the SI take precedence.
- 1.6. Competitors must follow Club Policies (<https://www.rqys.com.au/policiesanddocuments/> )

## **2. CHANGES TO SAILING INSTRUCTIONS**

- 2.1. Any change to the sailing instructions will be posted before 0900 on the day it will take effect, except that any change to the schedule of races will be posted by 2000 on the day before it will take effect.

## **3. COMMUNICATIONS WITH COMPETITORS**

- 3.1. Notices to competitors will be posted on the official notice board located at <https://www.rqys.com.au/brisbane-race-week-2024/>.
- 3.2. The race office is located at The RQYS Sailing Office located adjacent to the main Rigging Lawn, telephone 3396 8666, email [sailing@rqys.com.au](mailto:sailing@rqys.com.au) .
- 3.3. On the water, the race committee intends to monitor and communicate with competitors on VHF radio channel 72 or if directed by the Race Officer 77.
- 3.4. [DP] While racing, except in an emergency, a boat shall not make voice or data transmissions and shall not receive voice or data communication that is not available to all boats.

## **4. CODE OF CONDUCT**

- 4.1 [DP] Competitors and support persons shall comply with reasonable requests from race officials.
- 4.2 [DP] Competitors and support persons shall handle any equipment or place advertising provided by the organizing authority with care, seamanship, in accordance with any instructions for its use and without interfering with its functionality.

## **5. SIGNALS MADE ASHORE**

- 5.1. Signals made ashore will be displayed at the official flag pole located at the top of the Eastern Gangway of the Bill Kirby Docks.
- 5.2. When flag AP is displayed ashore, '1 minute' is replaced with 'not less than 60 minutes' in Race Signals AP.

## 6. RACE FORMATS

- 6.1. The Hairy Hot Lap shall consist of course around Green Island boats may start and finish as many times as they like in the “race time window” (See NoR 7 Schedule), results will be based on fastest elapsed time around the course in a single lap.
- 6.2. Short Courses shall consist of utilising the Fixed Marks in Moreton Bay.
- 6.3. Passage Race, the course to be sailed shall be confirmed via SMS by Monday 06/05/2024 0900, a tentative course is for boats to race from Waterloo bay to the Sandhills and back.
- 6.4. Pursuit Race, The Pursuit Race shall be a similar format to RQYS WAGS (with spinnakers).
- 6.5. Start times will be advised via SMS by Wednesday 0900.
- 6.6. Note Brisbane Race Week Pursuit Race is totally separate from the regular RQYS WAGS competition fleet.

## 7. SCHEDULE OF RACES

7.1.

Date	Races	Time or First Warning Signal
Friday 3 <sup>rd</sup> May	<p>Skippers &amp; Crew – Welcome &amp; Briefing</p> <p>Start of race 1 the Hairy Hot Lap</p> <p>Daily Presentation Mexican Theme Welcome - Flags Function room</p>	<p>1200 hrs Location TBC on Official Noticeboard.</p> <p>Between 1300 hrs &amp; 1600 hrs.</p> <p>1700 hrs, TBC by SMS</p>
Saturday 4 <sup>th</sup> & Sunday 5 <sup>th</sup> May	<p>Short Courses</p> <p>Daily Presentation – RQYS Bar</p>	<p>First warning 1100hrs</p> <p>Approx. 90 minutes after last boat finished TBC by SMS.</p>
Monday 6 <sup>th</sup> May	<p>Long Passage Race</p> <p>Daily Presentation – RQYS Bar</p>	<p>First Warning 1100hrs</p> <p>Approx. 90 minutes after last boat finished TBC by SMS.</p>
Tuesday 7 <sup>th</sup> May	Lay Day	
Wednesday 8 <sup>th</sup> May	<p>Pursuit Race</p> <p>Brisbane Race Week Final Presentation– RQYS Bar</p>	<p>From 1130 hrs</p> <p>1700 hrs Combined with WAGS Presentation</p>

7.2. On the last scheduled day of racing no warning signal will be made after 1300 hrs.

## **8. DIVISION FLAGS**

- 8.1. Monohull division shall be numeral pennant 1.
- 8.2. Monohull Cruising division shall be numeral pennant 2.
- 8.3. Trailerable division shall be numeral pennant 3.
- 8.4. Multihull division shall be numeral pennant 4.

## **9. RACING AREA**

- 9.1. SI Attachment A shows the location of the start area(s).

## **10. COURSES**

- 10.1. For The Hairy Hot Lap:  
The diagram in SI Attachment B show the courses, including the approximate angles between legs.
- 10.2. For the Short Courses:  
Shall be a course from the [RQYS Winter Course Book V2](#).
- 10.3. For the Passage Race:  
Shall be a course from the [Manly Course Book V2.5](#), tentative course shall be course 17.
- 10.4. For the Pursuit Race:  
Shall be a course from the [WAGS Sailing Instructions Attachment A](#).
- 10.5. No later than the warning signal, the race committee signal vessel will display the course to be sailed and the approximate compass bearing of the first leg.

## **11. MARKS**

- 11.1. Marks are as described in the relevant course sections as per SI section 10.

## **12. THE START**

- 12.1. The "Hairy Hot Lap" will be started as follows:
  12. A five (5) minute warning signal shall be made by display of an orange flag.
  12. The start of the "race time window" will be signalled by display of the division flags accompanied by a single horn blast. (1300hrs to 1600hrs)
  12. Boats may start at any time during the "race time window" (SI 12.1.2).
  12. Boats may choose to go clockwise or anti clockwise.
  12. The starting line will be between a staff displaying an orange flag on the start boat at the starboard end and an orange buoy at the port end approximately 300m to 800m from the outer Manly Harbour Leads.
  12. Boats not starting or finishing shall keep clear of the start line.
- 12.2. The Short Courses & Passage Race will be started as follows:
  12. The starting line will be between a staff displaying an orange flag on the start boat at the starboard end and an orange buoy at the port end approximately 300m to 800m from the outer Manly Harbour Leads.
  12. Boats whose warning signal has not been made shall avoid the starting area during the starting sequence for other races.
  12. A boat that does not start within ten (10) minutes after her starting signal will be scored Did Not Start without a hearing. This changes RRS A5.1 and A5.2.

- 12.3. The Pursuit Race will be started as follows:
12. Boats shall start no earlier than their allocated start time. All times are in Brisbane EST time. Syncing of your clock is recommended at <http://www.time-anddate.com/worldclock/fullscreen.html?n=47>
  12. The Race Officer (starter) will usually raise a start bat 10 seconds prior to the minute and lower the start bat on the minute.
  12. A sound signal will be given to any yacht starting early and therefore they are required to restart. This changes RRS 26.
  12. All boats shall keep clear of the start line and not cross in either direction prior to their designated start time.
  12. A boat re-starting because of OCS shall return and re-enter the course via the rounding of the pin or start boat and keep clear of all starting boats. NO DIPPING.
  12. The starting line will be between a staff displaying an orange flag on the start boat at the starboard end and an orange buoy at the port end approximately 300m to 800m from the outer Manly Harbour Leads.

## **12. THE FINISH**

- 12.4. The finishing line shall be between a staff displaying a blue flag on the finishing boat and the course side of the orange buoy finishing mark.
- 12.5. When there is no race committee vessel on station at the finish the alternate finish line shall be an extension of the Eastern most Port and Starboard Lateral Beacons to the south end within 100m. In this case, yachts are required to declare to the Sailing Office their finish time. Finish declarations shall be lodged at the Sailing Office in person or by phone ([sailing@rqys.com.au](mailto:sailing@rqys.com.au) or 0404 900 546) within 2 hours following the completion of the race and shall include the name of the yacht, skipper and finishing time to Eastern Standard Time.

## **13. PENALTY SYSTEM**

- 13.1. RRS 44.1 is changed so that the Two-Turns Penalty is replaced by the One-Turn Penalty.

## **14. TIME LIMITS**

- 14.1. The time limit for all boats to be finished is 1500hrs, except for the Hairy Hot Lap see SI 12.1.2.

## **15. HEARING REQUESTS**

- 15.1. For each division, the protest time limit is 90 minutes after the last boat in that division finishes the last race of the day or the race committee signals no more racing today, whichever is later. The time will be posted on the official notice board.
- 15.2. Hearing request forms are available from the race office at <https://www.rqys.com.au/documents-auditing/>. Physical forms can be requested from the RQYS Sailing Office adjacent to the Main Rigging Lawn.
- 15.3. Notices will be posted no later than 30 minutes after the protest time limit to inform competitors of hearings in which they are parties or named as witnesses. Hearings will be held at a time and place advised on the hearing notice.

## **16. SCORING**

- 16.1. One (1) race is required to be completed to constitute a series.
- 16.2. A boat's series score shall be the total of her race scores.

## **17. HANDICAPS**

- 17.1. PHS: Handicaps shall be allocated by the RQYS Handicap Committee for a vessels first race in the series, Subsequent races will be adjusted by the SailSys PHS. Changes to a boat's sailing configuration or equipment shall be advised to the RQYS Sailing Office prior to the next race in which it intends to compete.
- 17.2. For further information regarding handicaps and scoring at <https://www.sailsys.com.au>
- 17.3. A "Request for Review of Handicap" form can be found at: <https://www.rqys.com.au/documents-auditing/> and must be lodged before 0900 hrs Friday 3<sup>rd</sup> May 2024.
- 17.4. [DP][NP] Failing to notify the RQYS Sailing Office of changes to boats configuration or rating, may result in protest by the Race Committee.

## **18. [DP][NP] SAFETY REGULATIONS & AQUATIC PERMIT CONDITIONS**

- 18.1. All skippers shall SIGN ON before first warning each day by radioing the signal vessel. The signal vessel will signal the commencement of sign on by display of an orange flag.
- 18.2. All Maritime Queensland Aquatic Event conditions must be followed including:
  18. All Participating ships are not to impede power driven vessels traversing Manly Boat Harbour and associated channels.
  18. All Participating ships are to obey the gazetted speed limit in Manly Boat Harbour (6 knots).
  18. No Spinnakers are to be flown in the Manly Harbour 6-knot area.
  18. Vessels must observe a 20 metre exclusion zone around each of the following Aids to Navigation being Jay's Reef Buoy, Hope Banks Beacon, Norman J Wright Beacon, Crawford James Pattison Beacon, Red Beacon NE Green Island, South Cardinal Beacon St Helena Island, respectively referred to in the Sailing Instructions as, JRB, HBI, NJW, CJP, GIR, and SHS.
  18. All skippers of any vessel participating in a race to which this Authority applies, must maintain on board and produce upon demand by the Race Committee, a copy of a current, valid Certificate of Currency with respect to the third party property and third party personal injury insurance for the vessel.
  18. All marine incidents must be reported to the Race Committee in addition to regulatory requirements to report marine incidents to Maritime Safety Queensland
- 18.3. No sailing vessel shall berth on or impeded traffic to/from the RQYS fuel dock with out permission from the RQYS Sailing or Marina Office.
- 18.4. A boat that retires from a race shall notify the race committee at the first reasonable opportunity.

## **19. REPLACEMENT OF EQUIPMENT**

- 19.1. Boats intending to race with a sail number other than that stipulated on their entry shall advise the sailing office in writing of the change, prior to racing. Failure to comply shall result in the boat being scored DNC for all races on that day. This changes RRS 63.1, A4 and A5.

## **20. EQUIPMENT AND MEASUREMENT CHECKS**

- 20.1. A boat or equipment may be inspected at any time for compliance with the class rules, notice of race and sailing instructions.
- 20.2. [DP] When instructed by a race official on the water, a boat shall proceed to a designated area for inspection.

## **21. OFFICIAL VESSELS**

- 21.1. Official vessels will be identified by display of a white flag with black letters 'RC' or red 'MEIDA'.

## **22. [NP][DP] BERTHING**

- 22.1. Boats shall be kept in their assigned places while in the harbour.
- 22.2. Entrants are responsible for organising their own berthing.
- 22.3. For RQYS Marina Berths, please contact the RQYS Marina Office on 3396 8666 during business hours or [marina@rqys.com.au](mailto:marina@rqys.com.au), Berthing is limited early booking is essential.

## **23. HAUL-OUT RESTRICTIONS**

- 23.1. [DP] Boats shall not be hauled out during the event except with and according to the terms of prior written permission of the race committee.

## **24. DIVING EQUIPMENT AND PLASTIC POOLS**

- 24.1. Underwater breathing apparatus and plastic pools or their equivalent shall not be used around keelboats between the preparatory signal of the first race and the end of the last race of the event.

## **25. PRIZES**

- 25.1. Prizes will be given to each division as follows:
  25. 1st, 2nd, 3rd Overall Brisbane Race Week on PHS.
  25. 1st Hot Lap Scratch (Fastest lap Scratch elapsed time).
  25. 1st Hot Lap PHS (Fastest Lap on corrected PHS).
  25. Passage Race Prize - 1st on PHS.
  25. Pursuit Race Prize - 1st over the line.
- 25.2. Other prizes may be awarded at the direction of the Organizing Authority.

## **26. RISK STATEMENT**

- 26.1. RRS 3 states: 'The responsibility for a boat's decision to participate in a race or to continue to race is hers alone.' By participating in this event each competitor agrees and acknowledges that sailing is a potentially dangerous activity with inherent risks. These risks include strong winds and rough seas, sudden changes in weather, failure of equipment, boat handling errors, poor seamanship by other boats, loss of balance on an unstable platform and fatigue resulting in increased risk of injury. Inherent in the sport of sailing is the risk of permanent, catastrophic injury or death by drowning, trauma, hypothermia or other causes.
- 26.2. All participants are required to comply with any safety provisions as mandated under the Racing Rules of Sailing, the Australian Sailing Special Regulations Part 2 for Off The Beach Boats, and any Class Rules that may apply. The Squadron encourages and supports competitors who believe it is appropriate to exceed the above requirements (such as the wearing of helmets, body armor, impact vests, etc.) if they or their guardian believe that conditions and their personal circumstances warrant. All competitor's attention is drawn to the Risk Statement – Section 27 of the Sailing Instructions.

## **27. INSURANCE**

- 27.1. Each participating boat shall be insured with valid third-party liability insurance with a minimum cover of \$10,000,000AUD per incident or the equivalent.

---

## LOCATION INFORMATION

[Regatta Notice Board](#) View the Regatta Notice Board to access Sailing Instructions, Entry, Amendments and more

Accommodation: Ample and varied accommodation is available in the local area. Early bookings are recommended.

The Manly Marina Cove Motel is located on the grounds of RQYS – [www.manlymarinacove.com](http://www.manlymarinacove.com)

Limited [camping](#) facilities **may** be available in the grounds of RQYS.

Other Local Accommodation Includes:

[The Manly Hotel](#), [Waterloo Bay Hotel](#), [Pelican's Nestle Inn](#), [Wynnum Anchor Motel](#)

Access to RQYS: RQYS Reception (located on the left as you enter the club) is available to assist with access between the hours of 7am and 7pm.

Manly Amenities: [North Sails](#) (Sailmaker) – Club Sponsor North Sails is located just down the road from the club at 1/264 Tingal Road, an 8 minute drive away.

[Muir Marine QLD](#) (Chandlery) - Muir Marine have been serving the Marine Industry for over 100 years and supply everything in boating equipment. Located at 453 Esplanade a 3 minute drive from the club.

[IGA Manly Village](#) – IGA is the closest grocery store to RQYS located just 3 minute drive away, at the corner of Stratton Tce & Cambridge Parade.

[Manly Village Medical](#) – Is the closest medical centre to RQYS, located at 25 Cambridge Parade a 2 minute drive away.

Local Weather: The RQYS Weather Station can be found at:

<https://www.rqys.com.au/weather-station/>

The Weather Station records from above the club Bay Lookout.

BOM: Radar: <http://www.bom.gov.au/products/IDR663.loop.shtml>

Marine Forecast: <http://www.bom.gov.au/qld/forecasts/moreton-bay.shtml>

Other Popular forecasts:

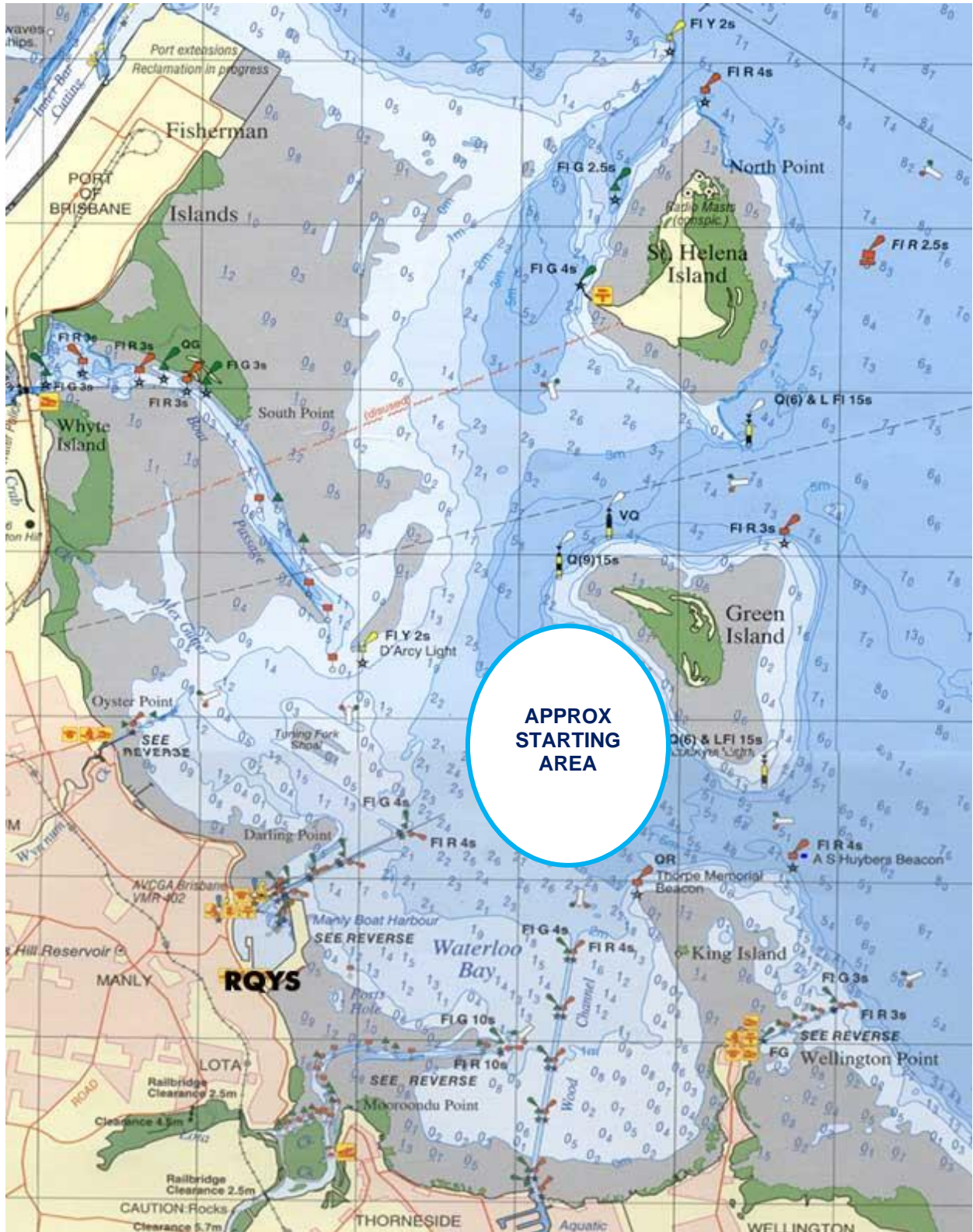
Predict Wind: <https://forecast.predictwind.com/table/>

Seabreeze: <https://www.seabreeze.com.au/weather/wind-forecast/brisbane>

WillyWeather: <https://wind.willyweather.com.au/qld/brisbane/brisbane.html>



SI ATTACHMENT A



# SI ATTACHMENT B

## The Hairy Hot Lap

