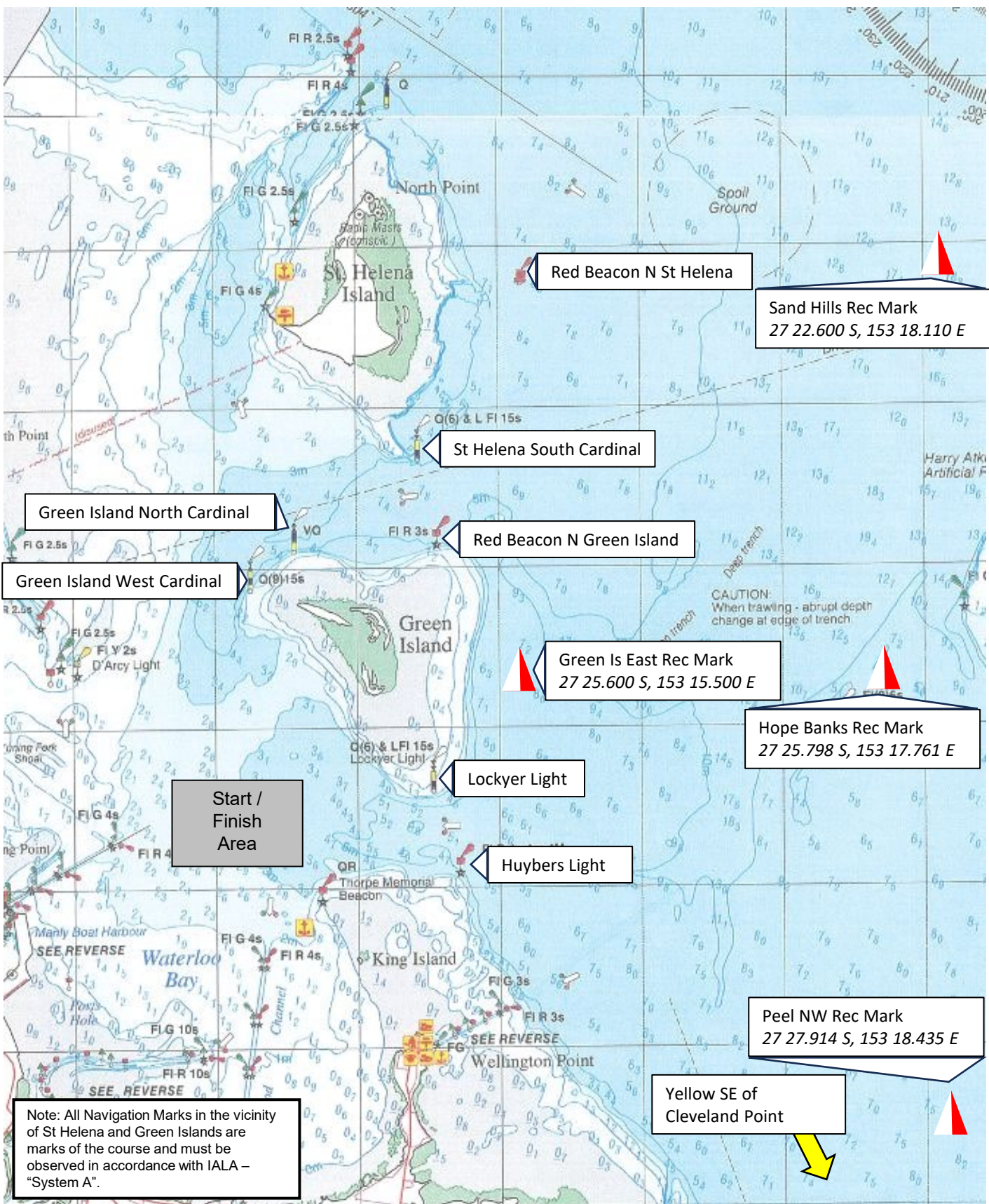


# Attachment C

## COURSE MARKS

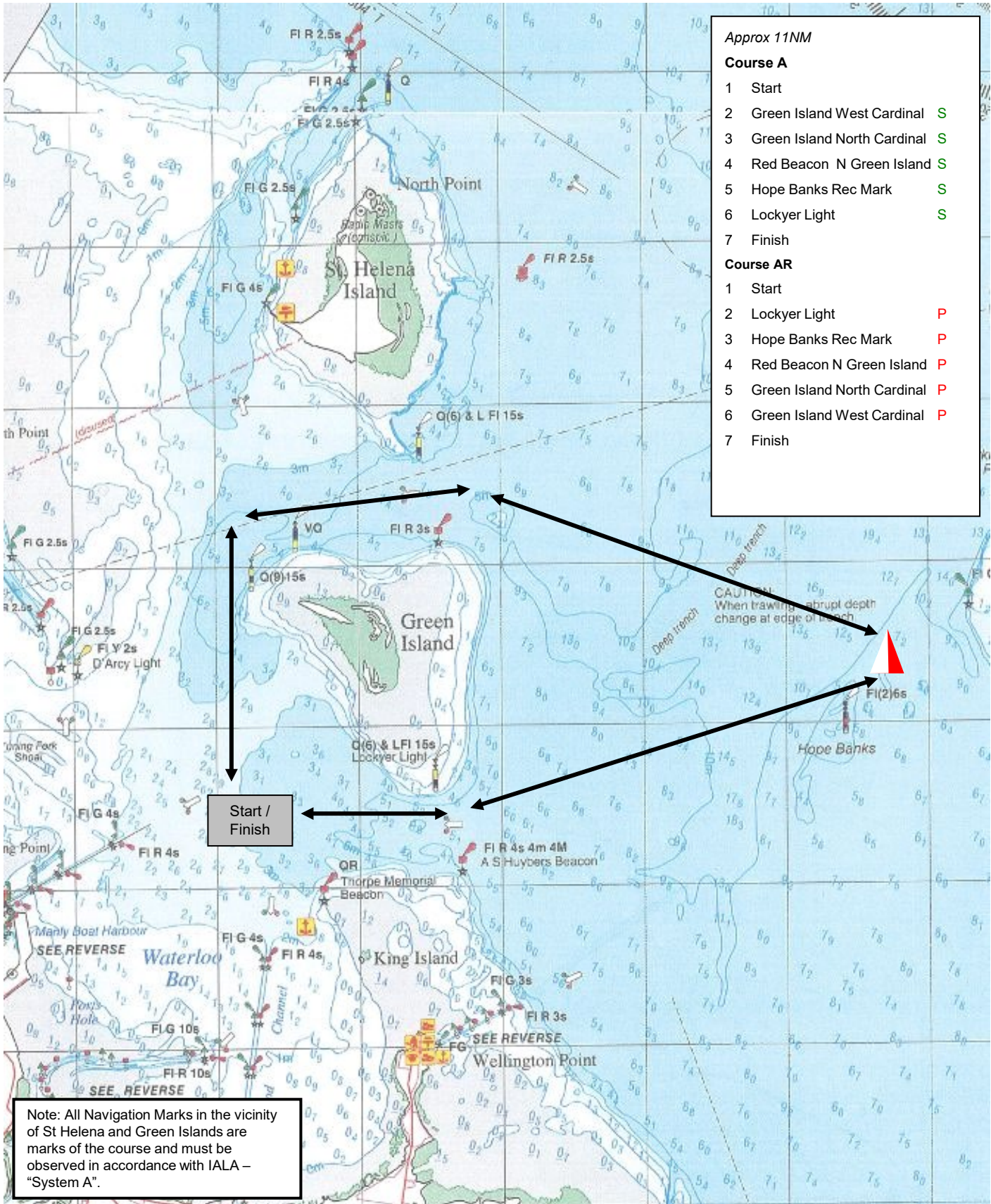


**Note:** charts illustrated in these sailing instructions show the general racing area – **Not for Navigation**

COURSE A

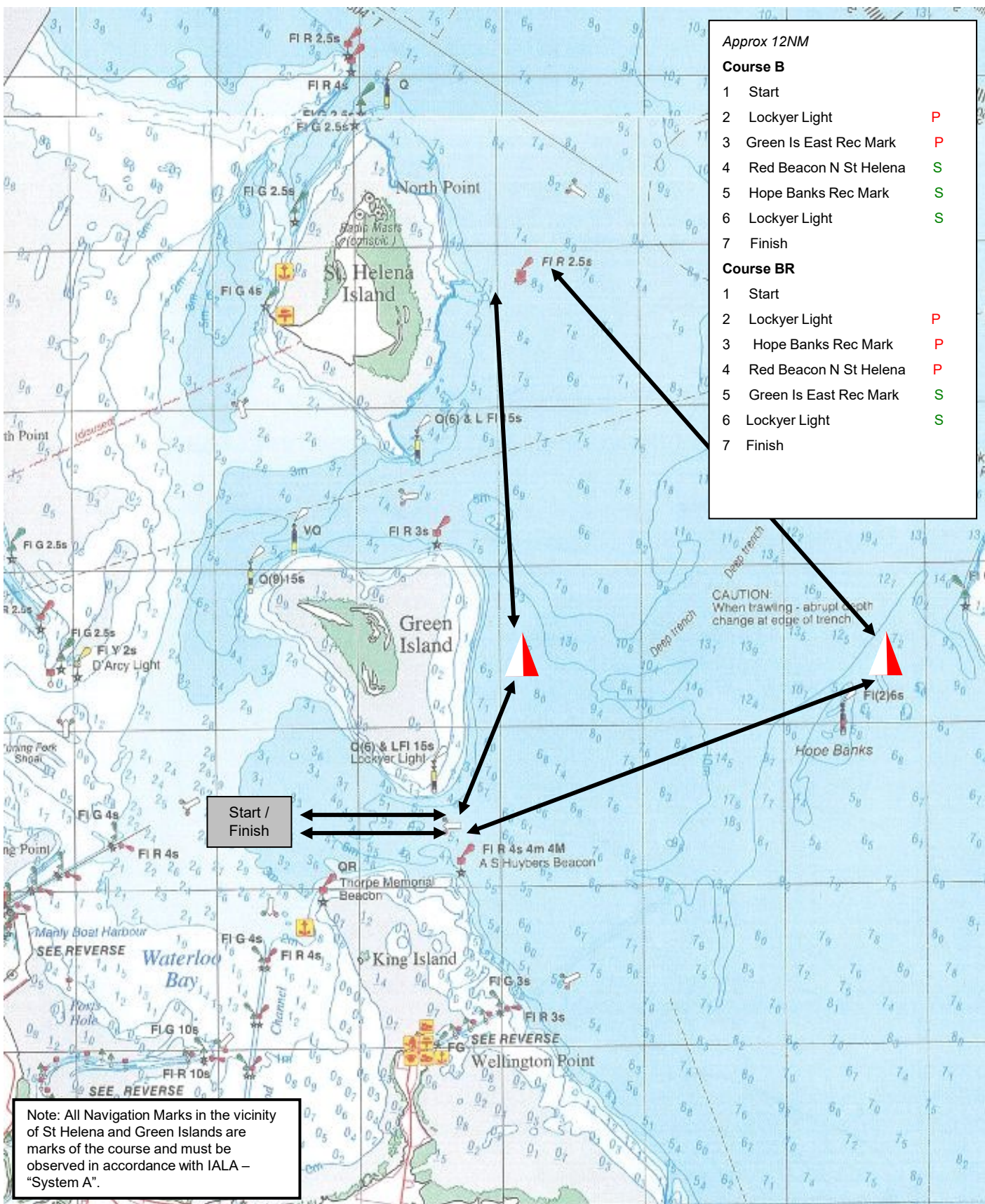


/ COURSE AR



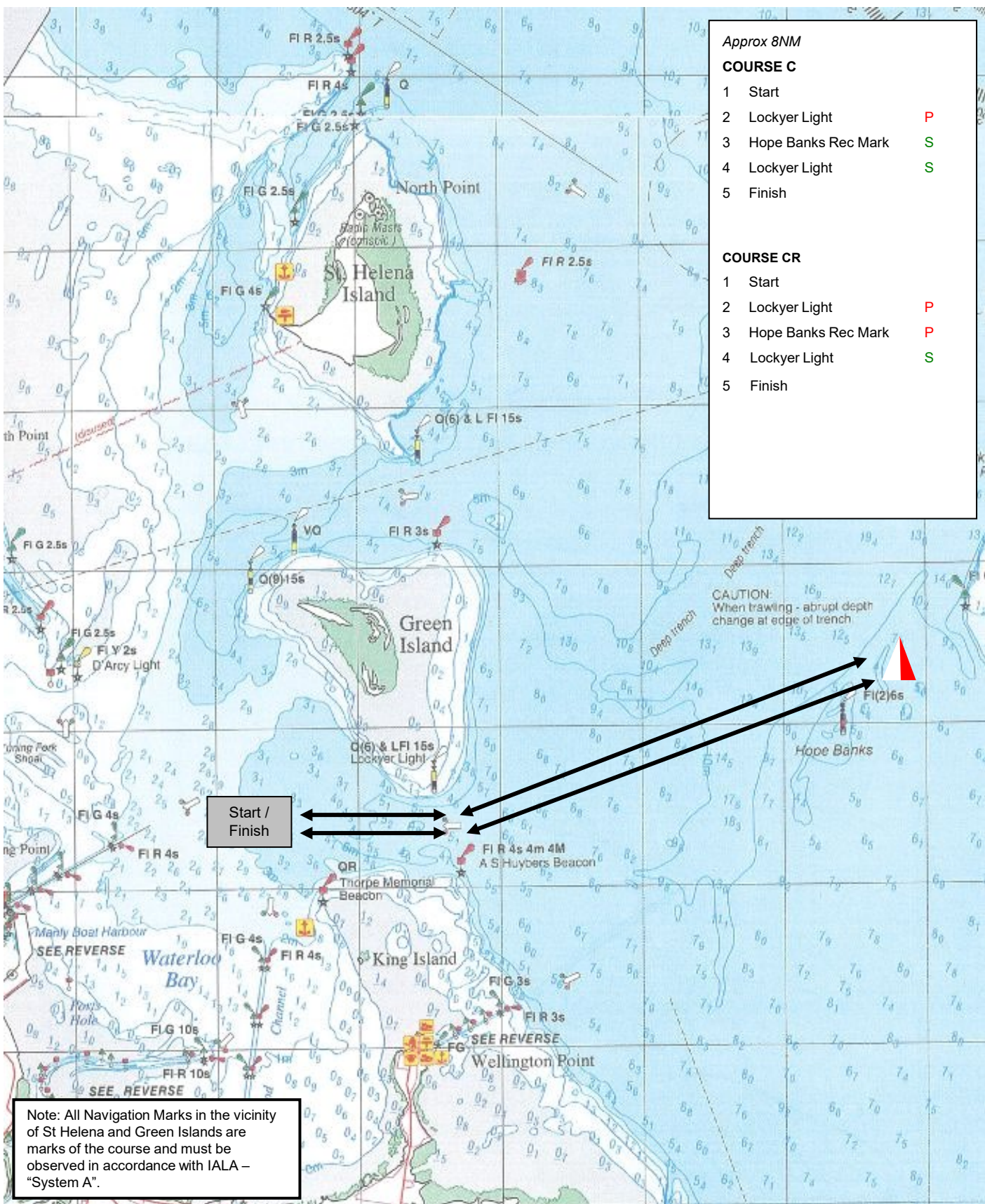
**Note:** charts illustrated in these sailing instructions show the general racing area – **Not for Navigation**

# COURSE B / COURSE BR



**Note:** charts illustrated in these sailing instructions show the general racing area – **Not for Navigation**

# COURSE C / COURSE CR



*Approx 8NM*

**COURSE C**

- 1 Start
- 2 Lockyer Light P
- 3 Hope Banks Rec Mark S
- 4 Lockyer Light S
- 5 Finish

**COURSE CR**

- 1 Start
- 2 Lockyer Light P
- 3 Hope Banks Rec Mark P
- 4 Lockyer Light S
- 5 Finish

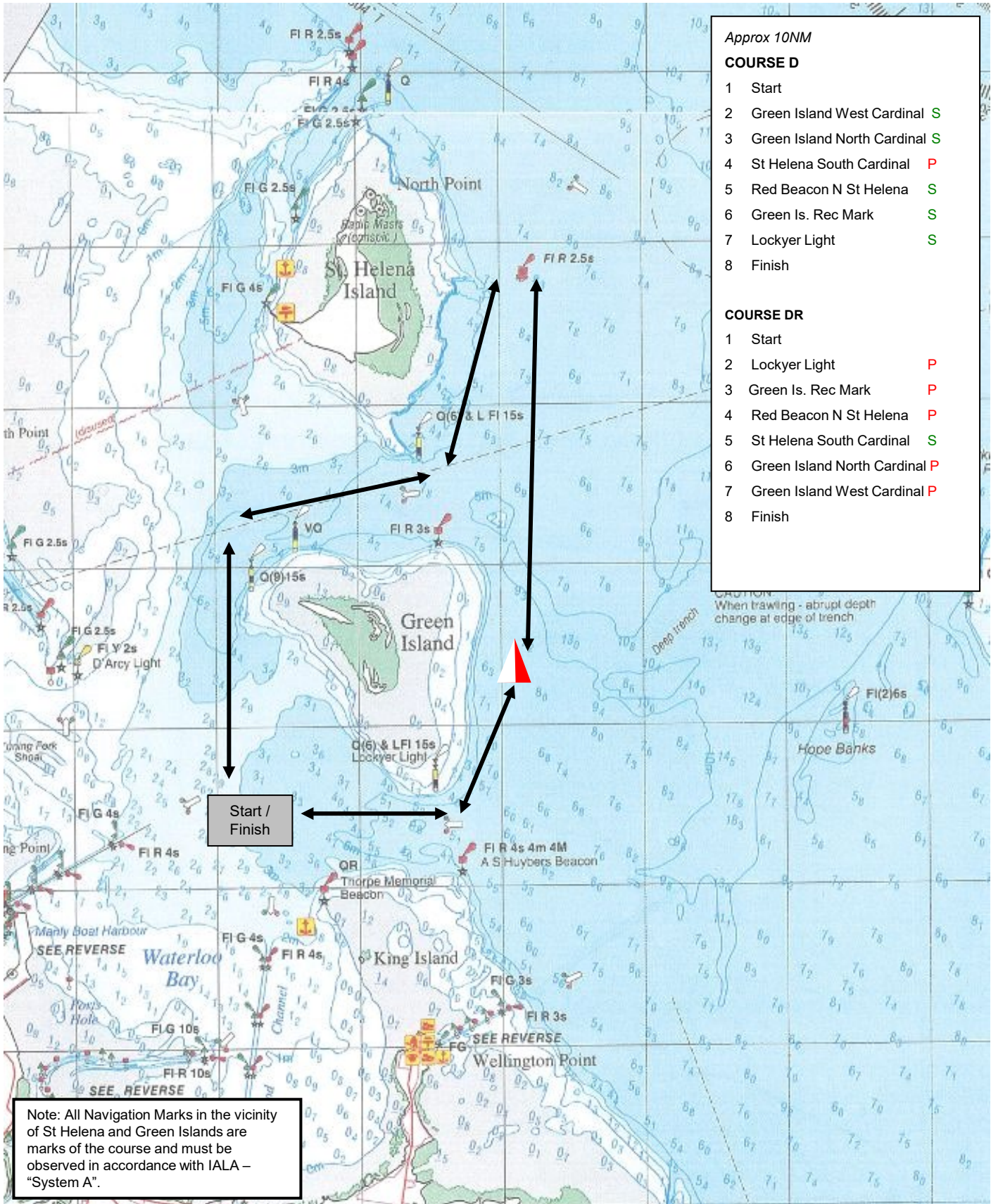
Start / Finish

CAUTION:  
When trawling - abrupt depth  
change at edge of trench

Note: All Navigation Marks in the vicinity of St Helena and Green Islands are marks of the course and must be observed in accordance with IALA – "System A".

**Note:** charts illustrated in these sailing instructions show the general racing area – **Not for Navigation**

# COURSE D / COURSE DR



*Approx 10NM*

COURSE D	
1	Start
2	Green Island West Cardinal <b>S</b>
3	Green Island North Cardinal <b>S</b>
4	St Helena South Cardinal <b>P</b>
5	Red Beacon N St Helena <b>S</b>
6	Green Is. Rec Mark <b>S</b>
7	Lockyer Light <b>S</b>
8	Finish

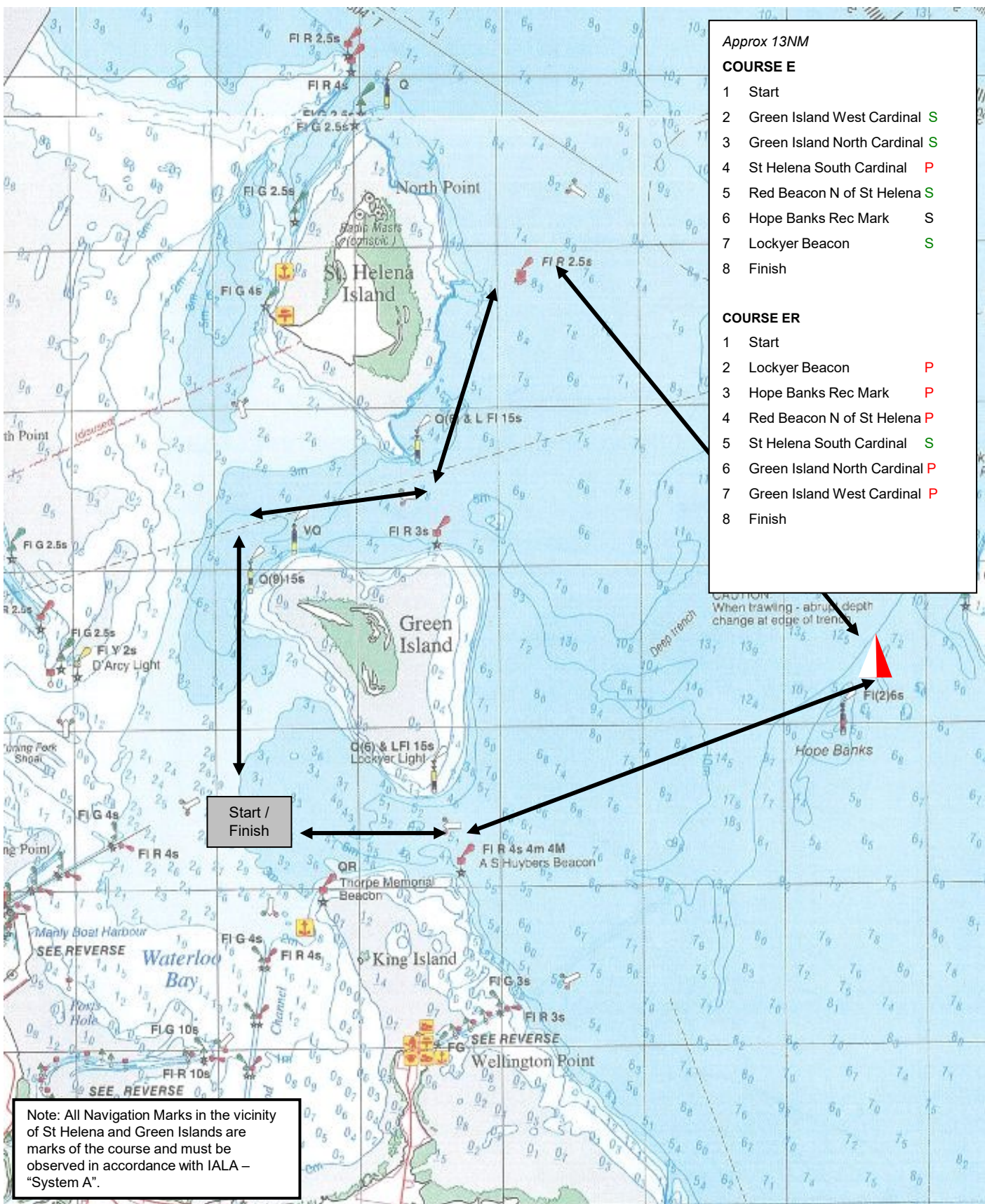
  

COURSE DR	
1	Start
2	Lockyer Light <b>P</b>
3	Green Is. Rec Mark <b>P</b>
4	Red Beacon N St Helena <b>P</b>
5	St Helena South Cardinal <b>S</b>
6	Green Island North Cardinal <b>P</b>
7	Green Island West Cardinal <b>P</b>
8	Finish

Note: All Navigation Marks in the vicinity of St Helena and Green Islands are marks of the course and must be observed in accordance with IALA – "System A".

**Note:** charts illustrated in these sailing instructions show the general racing area – **Not for Navigation**

COURSE E  / COURSE ER  



- Approx 13NM*
- COURSE E**
- 1 Start
  - 2 Green Island West Cardinal S
  - 3 Green Island North Cardinal S
  - 4 St Helena South Cardinal P
  - 5 Red Beacon N of St Helena S
  - 6 Hope Banks Rec Mark S
  - 7 Lockyer Beacon S
  - 8 Finish
- COURSE ER**
- 1 Start
  - 2 Lockyer Beacon P
  - 3 Hope Banks Rec Mark P
  - 4 Red Beacon N of St Helena P
  - 5 St Helena South Cardinal S
  - 6 Green Island North Cardinal P
  - 7 Green Island West Cardinal P
  - 8 Finish

Start / Finish

Note: All Navigation Marks in the vicinity of St Helena and Green Islands are marks of the course and must be observed in accordance with IALA – "System A".

**Note:** charts illustrated in these sailing instructions show the general racing area – **Not for Navigation**

# COURSE F / COURSE FR

Approx 12NM

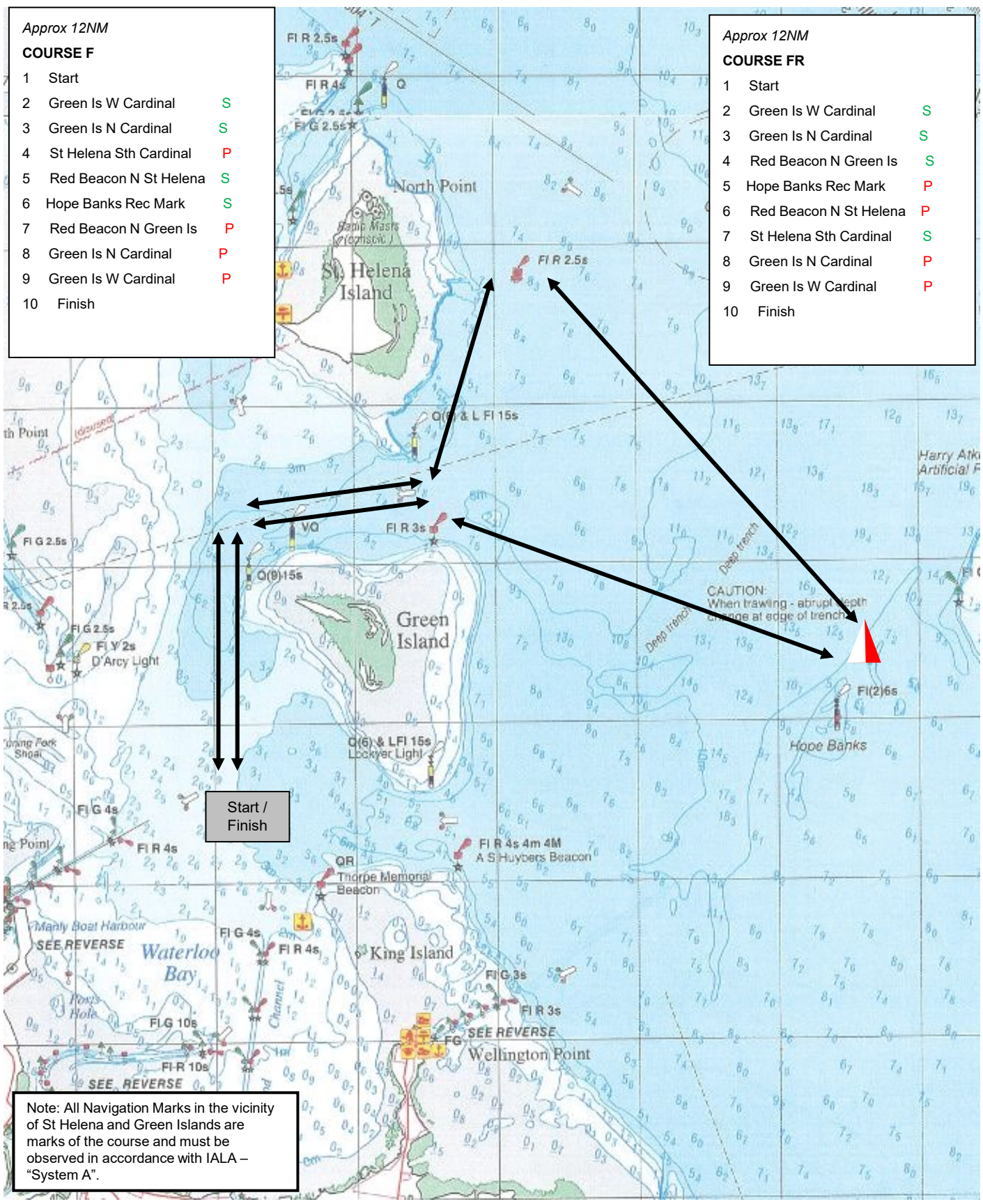
**COURSE F**

1	Start	
2	Green Is W Cardinal	S
3	Green Is N Cardinal	S
4	St Helena Sth Cardinal	P
5	Red Beacon N St Helena	S
6	Hope Banks Rec Mark	S
7	Red Beacon N Green Is	P
8	Green Is N Cardinal	P
9	Green Is W Cardinal	P
10	Finish	

Approx 12NM

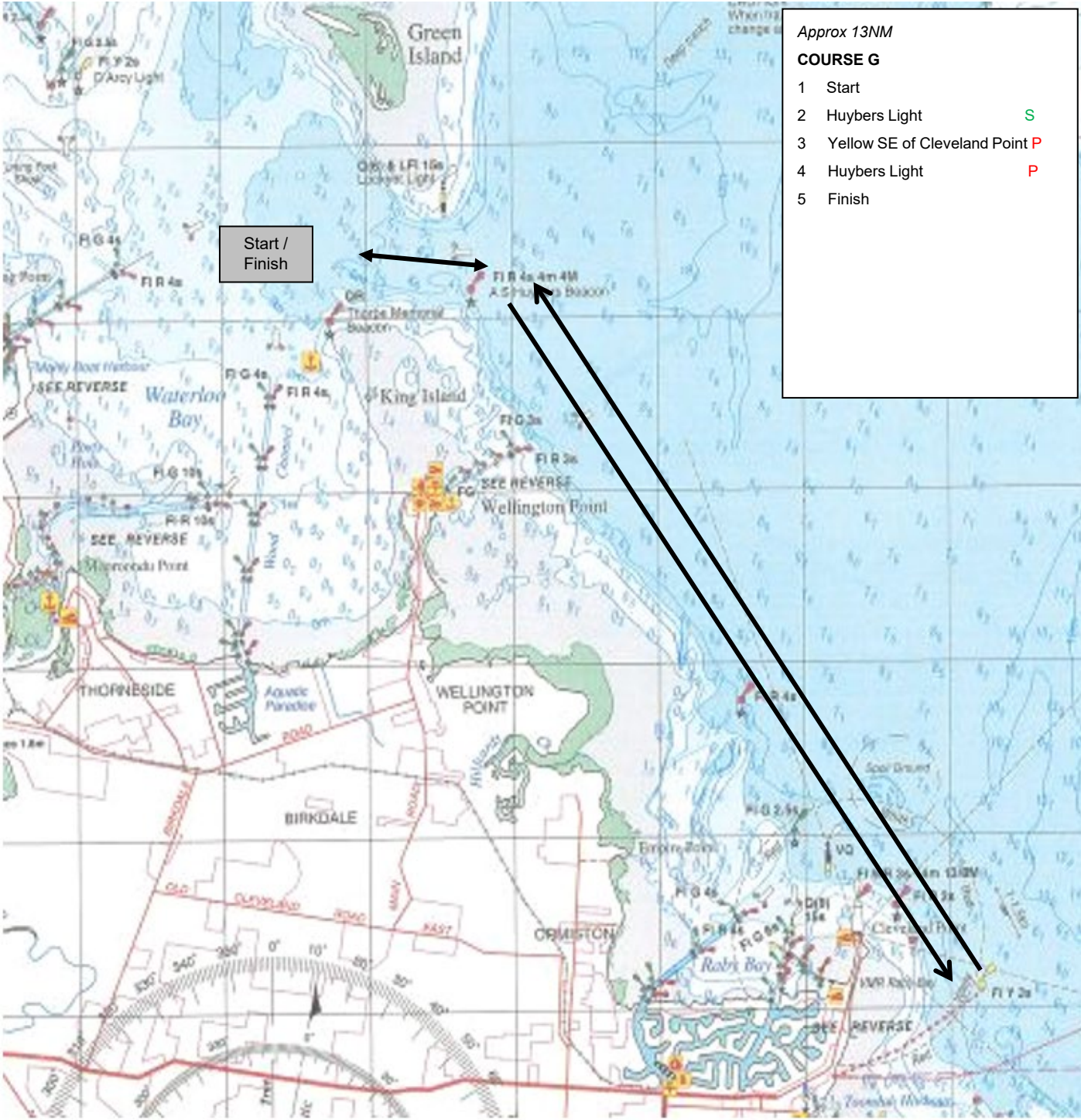
**COURSE FR**

1	Start	
2	Green Is W Cardinal	S
3	Green Is N Cardinal	S
4	Red Beacon N Green Is	S
5	Hope Banks Rec Mark	P
6	Red Beacon N St Helena	P
7	St Helena Sth Cardinal	S
8	Green Is N Cardinal	P
9	Green Is W Cardinal	P
10	Finish	



Note: All Navigation Marks in the vicinity of St Helena and Green Islands are marks of the course and must be observed in accordance with IALA – "System A".

# COURSE G



Approx 13NM

**COURSE G**

1	Start	
2	Huybers Light	S
3	Yellow SE of Cleveland Point	P
4	Huybers Light	P
5	Finish	

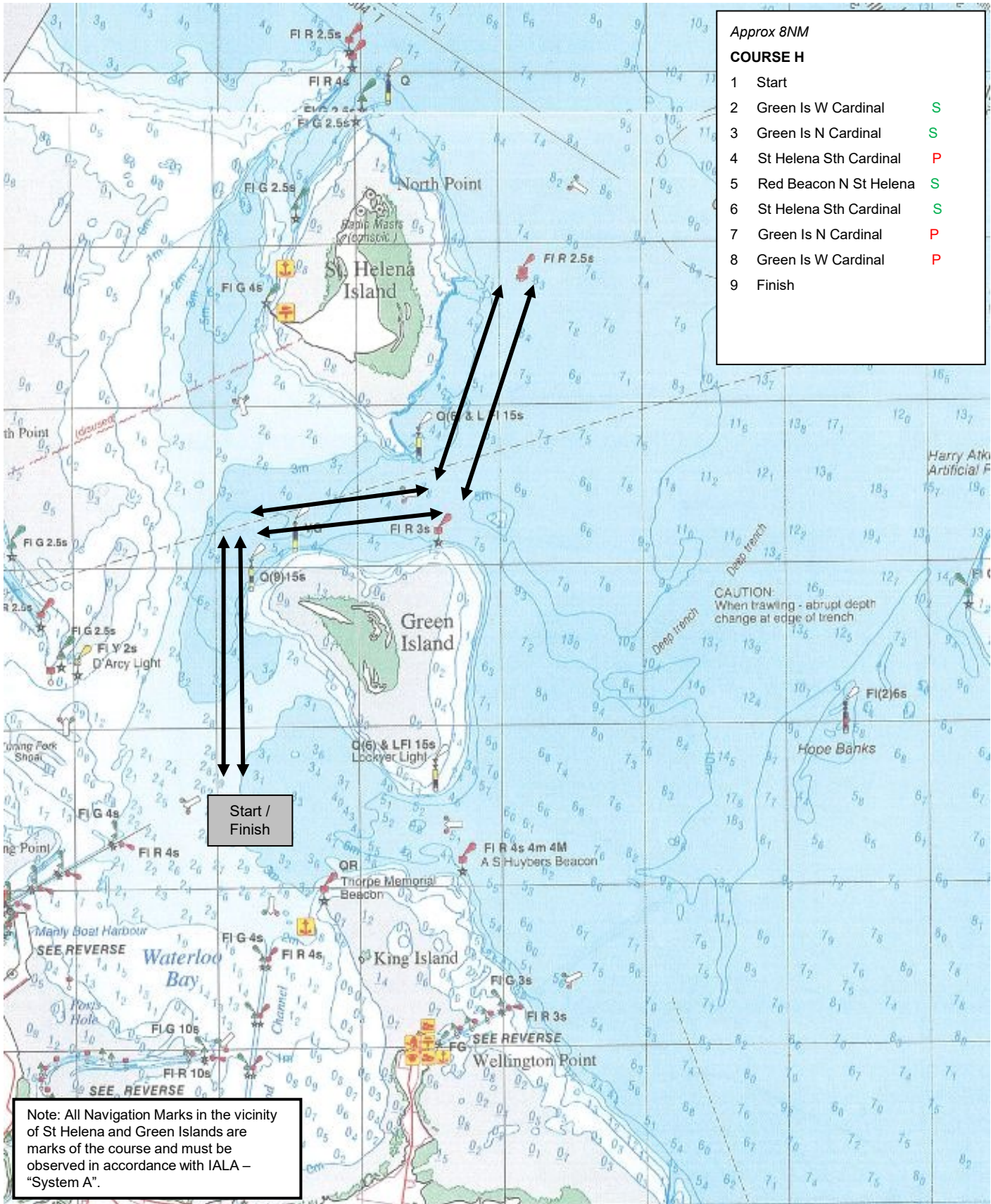
Start /  
Finish

Note: All Navigation Marks in the vicinity of St Helena and Green Islands are marks of the course and must be observed in accordance with IALA – “System A”.

**Note:** charts illustrated in these sailing instructions show the general racing area – **Not for Navigation**

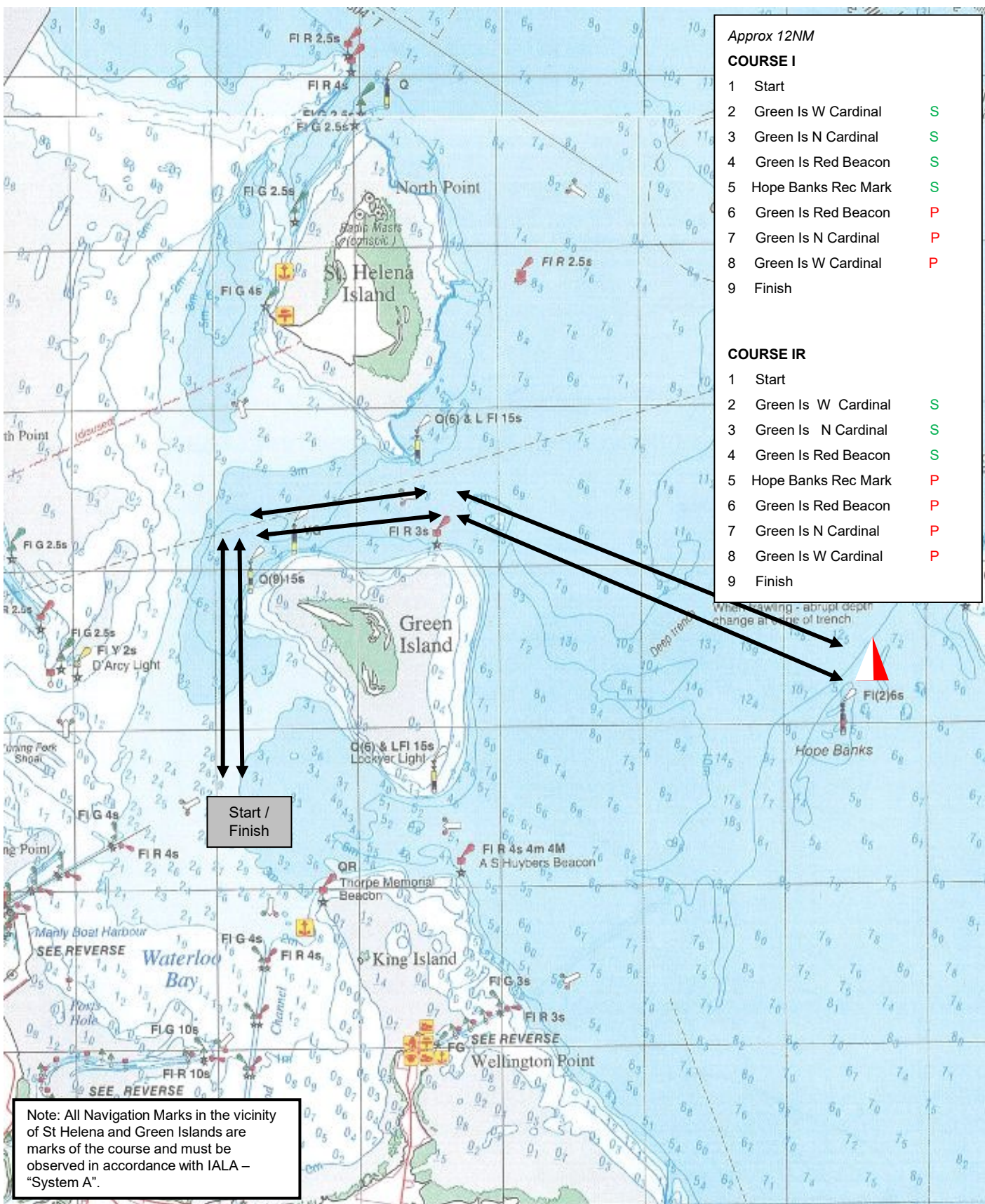


# COURSE H



**Note:** charts illustrated in these sailing instructions show the general racing area – **Not for Navigation**

COURSE I ● / COURSE IR ● ☒



*Approx 12NM*

**COURSE I**

1	Start	
2	Green Is W Cardinal	S
3	Green Is N Cardinal	S
4	Green Is Red Beacon	S
5	Hope Banks Rec Mark	S
6	Green Is Red Beacon	P
7	Green Is N Cardinal	P
8	Green Is W Cardinal	P
9	Finish	

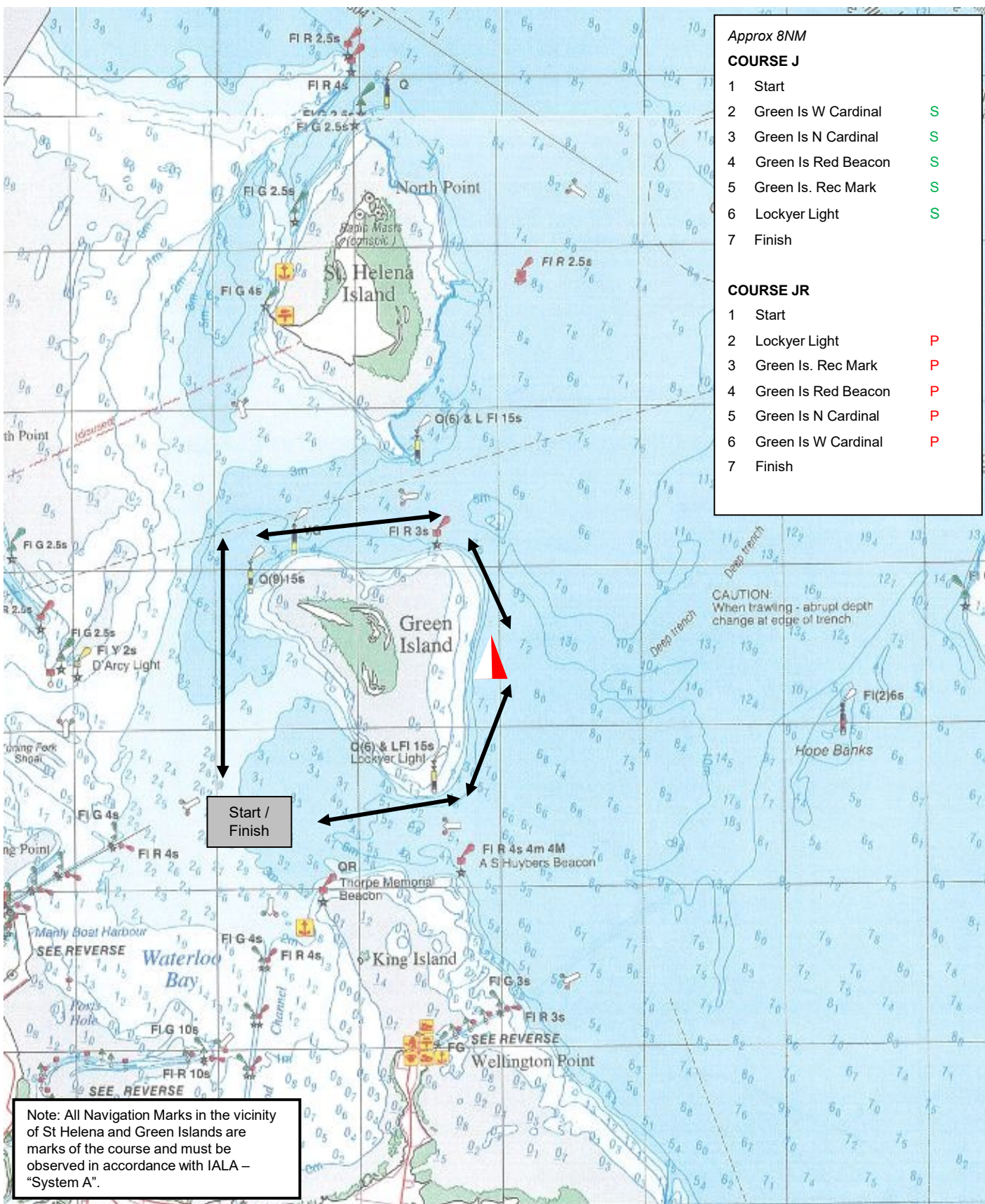
**COURSE IR**

1	Start	
2	Green Is W Cardinal	S
3	Green Is N Cardinal	S
4	Green Is Red Beacon	S
5	Hope Banks Rec Mark	P
6	Green Is Red Beacon	P
7	Green Is N Cardinal	P
8	Green Is W Cardinal	P
9	Finish	

Note: All Navigation Marks in the vicinity of St Helena and Green Islands are marks of the course and must be observed in accordance with IALA – "System A".

**Note:** charts illustrated in these sailing instructions show the general racing area – **Not for Navigation**

COURSE J  / COURSE JR  



*Approx 8NM*

**COURSE J**

1	Start	
2	Green Is W Cardinal	S
3	Green Is N Cardinal	S
4	Green Is Red Beacon	S
5	Green Is. Rec Mark	S
6	Lockyer Light	S
7	Finish	

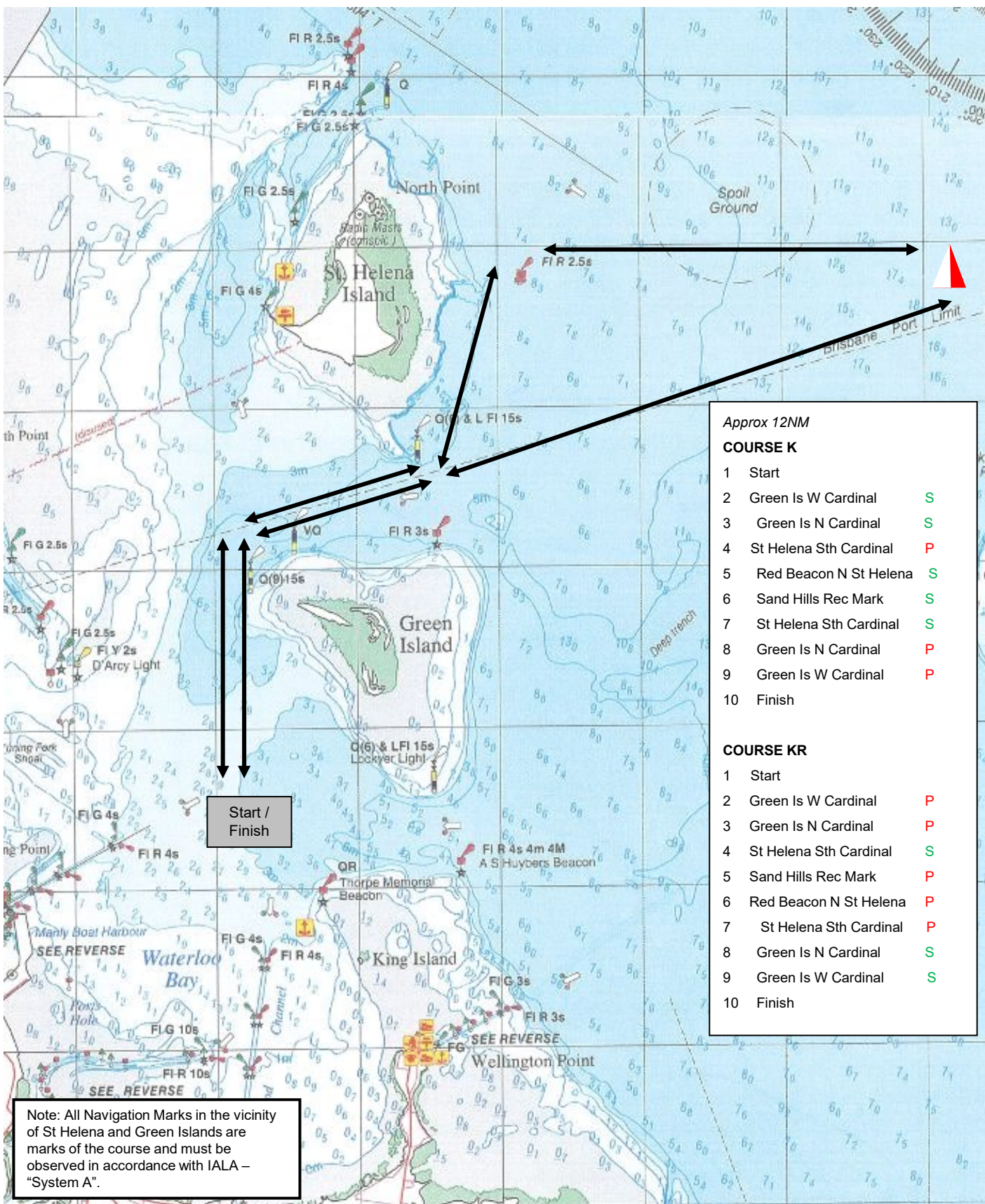
**COURSE JR**

1	Start	
2	Lockyer Light	P
3	Green Is. Rec Mark	P
4	Green Is Red Beacon	P
5	Green Is N Cardinal	P
6	Green Is W Cardinal	P
7	Finish	

Note: All Navigation Marks in the vicinity of St Helena and Green Islands are marks of the course and must be observed in accordance with IALA – "System A".

**Note:** charts illustrated in these sailing instructions show the general racing area – **Not for Navigation**

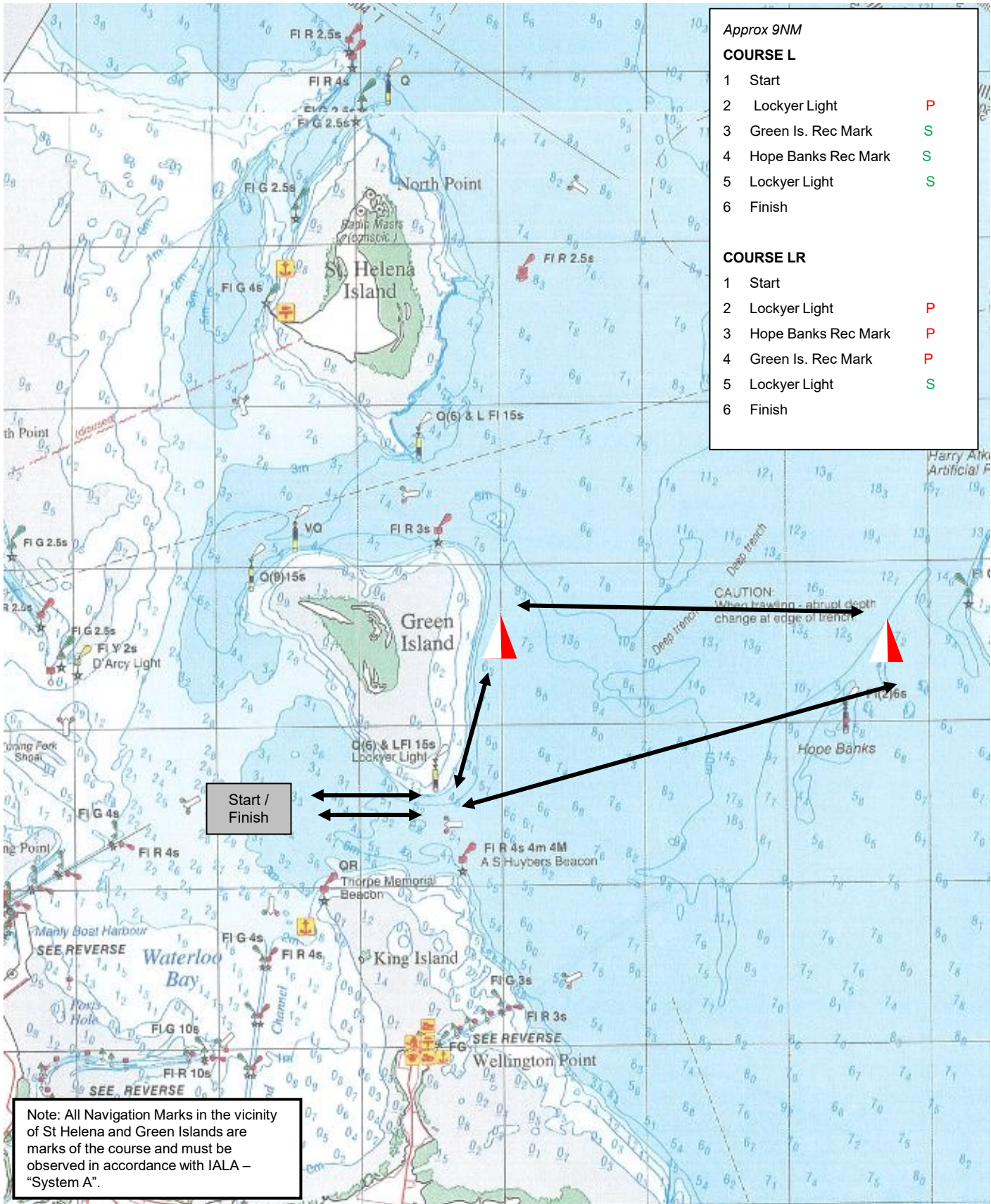
COURSE K  / COURSE KR 



Note: All Navigation Marks in the vicinity of St Helena and Green Islands are marks of the course and must be observed in accordance with IALA – “System A”.

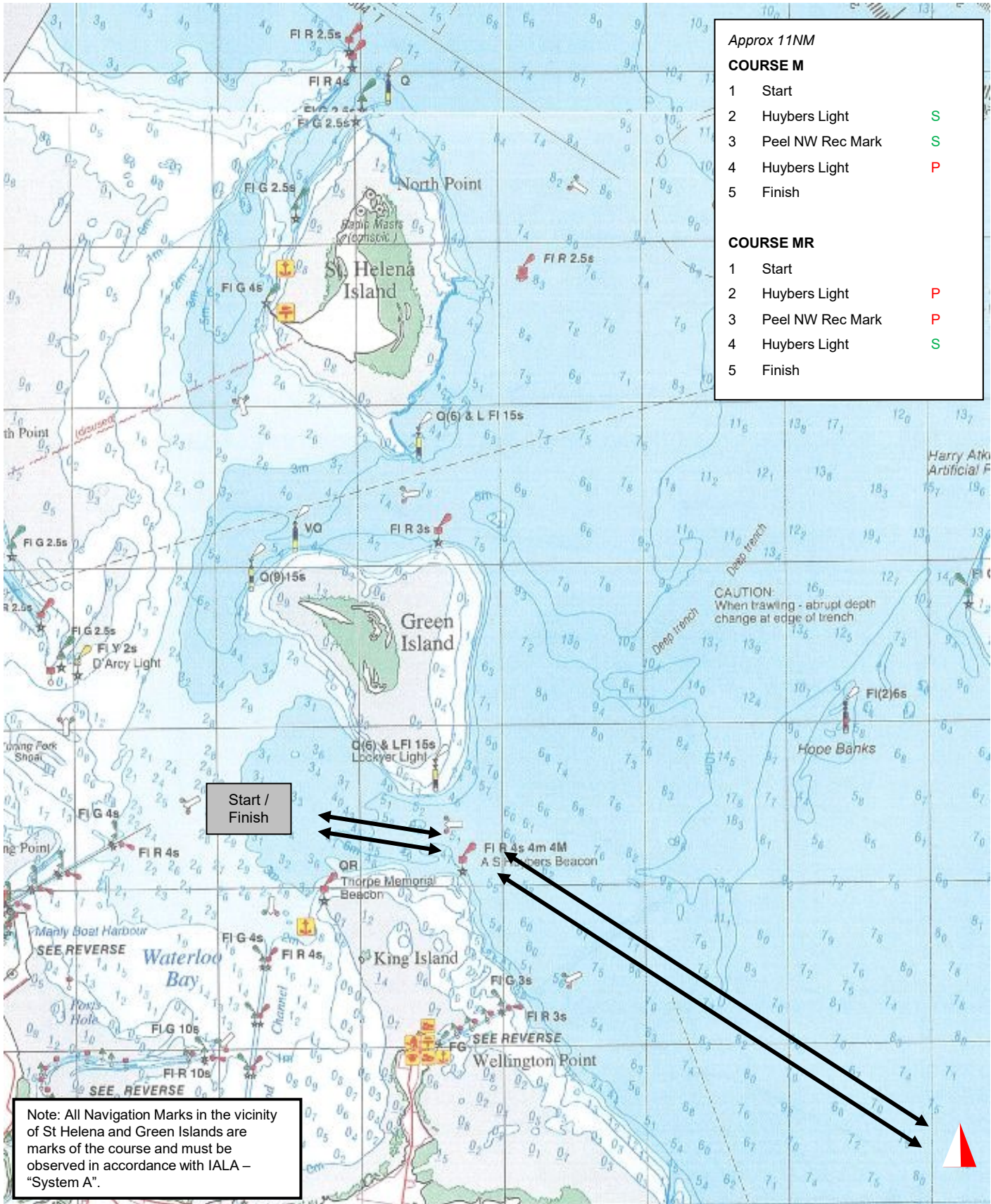
**Note:** charts illustrated in these sailing instructions show the general racing area – **Not for Navigation**

# COURSE L / COURSE LR



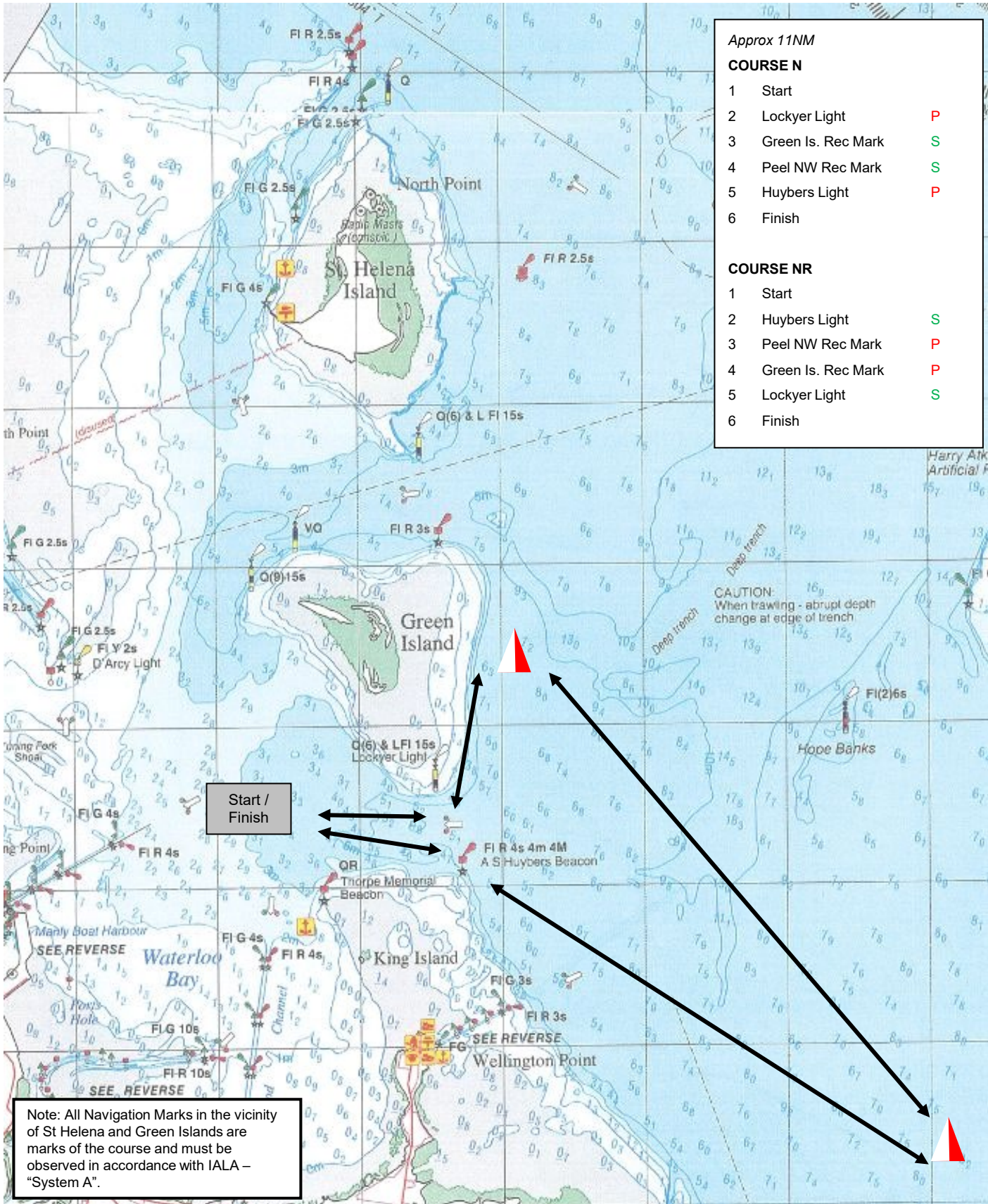
**Note:** charts illustrated in these sailing instructions show the general racing area – **Not for Navigation**

# COURSE M / COURSE MR



**Note:** charts illustrated in these sailing instructions show the general racing area – **Not for Navigation**

COURSE N  / COURSE NR  



*Approx 11NM*

COURSE N		
1	Start	
2	Lockyer Light	P
3	Green Is. Rec Mark	S
4	Peel NW Rec Mark	S
5	Huybers Light	P
6	Finish	
COURSE NR		
1	Start	
2	Huybers Light	S
3	Peel NW Rec Mark	P
4	Green Is. Rec Mark	P
5	Lockyer Light	S
6	Finish	

Start / Finish

Note: All Navigation Marks in the vicinity of St Helena and Green Islands are marks of the course and must be observed in accordance with IALA – "System A".

**Note:** charts illustrated in these sailing instructions show the general racing area – **Not for Navigation**