



2024 Open Team Sailing Championship

28th April 2024

SAILING INSTRUCTIONS (SI)

Organising Authority

**ROYAL QUEENSLAND YACHT SQUADRON LTD on behalf of
Pacer Queensland**

578 Royal Esplanade, Manly, QLD 4179

The notation '[NP]' in a rule of the sailing instructions (SIs) means that a boat may not protest another boat for breaking that rule. This changes RRS 60.1(a).

The notation '[DP]' in a rule of the sailing instructions (SI's) means that a protest committee can award a penalty less than disqualification (including no penalty) at their discretion. This changes Rule 64.2

1. RULES

- 1.1. The event is governed by the rules as defined in The Racing Rules of Sailing and umpired as per the Teams Racing Rules (RRS Appendix D).
- 1.2. The prescriptions and special regulations of Australia Sailing (AS) Part 2 will apply.
- 1.3. Where there is a difference between the Notice of Race (NoR) and the Sailing Instructions (SI) the SI take precedence.
- 1.4. Competitors must follow Club Policies (<https://www.rqys.com.au/membership/policies-and-documents/>)

2. CHANGES TO SAILING INSTRUCTIONS

- 2.1. Any change to the sailing instructions will be posted before 0830 on the day it will take effect, except that any change to the schedule of races will be posted by 2000 on the day before it will take effect.

3. COMMUNICATIONS WITH COMPETITORS

- 3.1. Notices to competitors will be posted on the official notice board located [Here](#).
- 3.2. The race office is located at The RQYS Sailing Office located adjacent to the Main Rigging Lawn, telephone 3396 8666, email sailing@rqys.com.au .
- 3.3. [DP] [NP] While racing, except in an emergency, a boat shall not make voice or data transmissions and shall not receive voice or data communication that is not available to all boats.

4. [DP] [NP] CODE OF CONDUCT

- 4.1 Competitors and support persons shall comply with reasonable requests from race officials.
- 4.2 Competitors and support persons shall handle any equipment by the organizing authority with care, seamanship, in accordance with any instructions for its use and without interfering with its functionality.

5. SIGNALS MADE ASHORE

- 5.1. Signals made ashore will be displayed at the official flag pole located at the top of the Eastern Gangway of the Bill Kirby Docks.
- 5.2. When flag AP is displayed ashore, '1 minute' is replaced with 'not less than 30 minutes' in Race Signals AP.

6. SCHEDULE OF RACES

6.1.

Date	Event	Time
Sunday 28 th April 2024	Compulsory Competitors Briefing at RQYS Rigging Lawn	0800 hrs
	First Warning Signal	0900hrs
	Presentation	ASAP After Racing

6.2. The Race Officer may elect to come in for a break and will notify sailors by using L flag.

6.3. No warning signal will be made after 1600 hrs.

7. CLASS FLAGS

7.1. The class flag ashore will be the Pacer Class flag.

8. RACING AREA

8.1. SI Attachment A shows the location of the racing area.

9. COURSES

9.1. The diagram in SI Attachment B shows the course, including the approximate angles between legs, the order in which marks are to be passed, and the side on which each mark is to be left.

10. MARKS

10.1. Marks are as described in SI Attachment B.

11. THE START

11.1. Races will be started as described below. This changes RRS 26.

11.1.1. Audible signals shall govern the start.

11.1.2. The race number shall be displayed on the start boat prior to the warning signal.

11.1.3. The starting sequence shall be:

SIGNAL	TIME BEFORE START- ING SIGNAL	SOUND SIGNAL	VISUAL INDICATION FLAGS
Warning	3 Minutes	3 Long	3 Blue Flags
Preparatory	2 Minutes	2 Long	2 Blue Flags
One (1) Minute	1 Minute	1 Long	1 Blue Flag
	30 Seconds	3 Short	
	20 Seconds	2 Short	
	10 Seconds	1 Short	
	5 Seconds	1 Short	
	4 Seconds	1 Short	
	3 Seconds	1 Short	
	2 Seconds	1 Short	
	1 Second	1 Short	
Start	0 Seconds	1 Long	All Blue Flags Lowered

11.1.1. Signals shall be timed from the beginning of the sound signal.

11.1.2. Failure to hear the signal shall not be grounds for redress. This changes RRS 60.1(b).

11.1.3. Visual indication flags shall be raised and lowered from the start boat to indicate the time before the start. Failure or mistiming of an indication flag shall not be grounds for redress. This changes RRS 60.1(b).

11.2. The starting line is between a staff displaying an orange flag on the signal vessel at the starboard end and the course side of the port-end starting mark.

11.3. [DP] [NP] Boats whose warning signal has not been made shall avoid the starting area during the starting sequence for other races.

11.4. A boat that does not start within two minutes after her starting signal will be scored Did Not Start without a hearing. This changes RRS D3.

12. THE FINISH

12.1. The finishing line is between a staff displaying a blue flag on the finishing vessel at the starboard end and the course side of the port end finishing mark.

13. TIME LIMITS

13.1. Boats not finishing within 5 minutes of the first boat shall be scored DNF without a hearing. This changes RRS 35 and D3.

14. HEARING REQUESTS

14.1. Boats intending to protest or seek redress other than under RRS D2.2(a) shall notify the race committee or the umpires of that intent immediately on completion of that race including the type of redress being sought.

15. SCORING

- 15.1. The racing format is:
 - 15.1 (a) Round Robin Racing of at least 1 round.
 - 15.1 (b) The Top 4 teams will enter a semi finals series, based on the provisional Round Robin results, the 1st place team will race the 4th place team and the 2nd place team will race the 3rd place team.
 - 15.1 (c) Grand Finals & Petite Finals (best of 3 races).
- 15.2. 80% of a round must be completed to be counted towards the results.
- 15.3. Scoring shall be as per RRS Appendix D.
- 15.4. The Organising Authority reserves the right to alter the format at any time.

16. [DP] [NP] SAFETY REGULATIONS

- 16.1. All skippers shall SIGN ON before racing each day and SIGN OFF at the earliest possible time after the completion of racing (but not later than the end of protest time). The sign on will be available near the Sailing Office & the Main Rigging Law.
 - 16.1.1. Only one (1) person from each team is required to SIGN ON and SIGN OFF
- 16.2. Competitors shall comply with the following requirements within and in the vicinity of Manly Boat Harbour:
 - 16.2.1. All boats shall keep to the right side of the channel when entering and exiting Manly Harbour.
 - 16.2.2. Once outside the Manly Boat Harbour, competitors are to, as soon as possible, stay outside of the main channel, keeping clear of powered vessels.

17. EQUIPMENT AND MEASUREMENT CHECKS

- 17.1. A boat or equipment may be inspected at any time for compliance with the class rules, notice of race and sailing instructions.

18. OFFICIAL VESSELS

- 18.1. Official vessels will be identified by displaying a white flag or sticker with black letters 'RC' or 'J' or white flag with red letters 'MEDIA'.

19. [DP][NP] SUPPORT TEAMS

- 19.1. No support or coach boats are allowed within 50 metres of the course, unless asked to assist by the race officer. The penalty for failing to comply with this requirement shall be at the discretion of the Jury and may result in the disqualification of all boats associated with the offending coach boat.
- 19.2. In the event of extreme conditions and if code flag "V" is flying from the committee boat, all Patrol and Support boats are to follow the requests of the Race Committee for their course on VHF Channel 77 (as per RRS 37).
- 19.3. Speed around the course shall be kept to a minimum with the boats engine to be in NEUTRAL when around sailors/people in the water.
- 19.4. Maximum speed whilst in the Harbour shall be 6 knots except in emergency situations.
- 19.5. In the case of a medical emergency, the vessel offering the First Aid, shall report the details to the Sailing Office on VHF Channel 77 "RQ77" and proceed to the "Fuel Pontoon" where RQYS Staff shall be on hand to assist.

20. TRASH DISPOSAL

- 20.1. Trash may be placed aboard official or support person vessels.

21. BERTHING

- 21.1. [DP][NP] The Organising Authority may restrict the areas in which vessels may rig/de-rig and launch.

22. PRIZES

- 22.1. Prizes will be given as follows:
1st, 2nd & 3rd teams overall.
- 22.2. Prizes will be distributed at the discretion of the organising authority and may vary depending on the number of entries.

23. RISK STATEMENT

- 23.1 RRS 3 states: 'The responsibility for a boat's decision to participate in a race or to continue to race is hers alone.' By participating in this event each competitor agrees and acknowledges that sailing is a potentially dangerous activity with inherent risks. These risks include strong winds and rough seas, sudden changes in weather, failure of equipment, boat handling errors, poor seamanship by other boats, loss of balance on an unstable platform and fatigue resulting in increased risk of injury. **Inherent in the sport of sailing is the risk of permanent, catastrophic injury or death by drowning, trauma, hypothermia or other causes.**
- 23.2 All participants are required to comply with any safety provisions as mandated under the Racing Rules of Sailing, the Australian Sailing Special Regulations Part 2 for Off The Beach Boats, and any Class Rules that may apply. The Squadron encourages and supports competitors who believe it is appropriate to exceed the above requirements (such as the wearing of helmets, body armor, impact vests, etc.) if they or their guardian believe that conditions and their personal circumstances warrant. All competitor's attention is drawn to the Risk Statement – Section 12 of the Notice of Race & Section 23 of the Sailing Instructions.

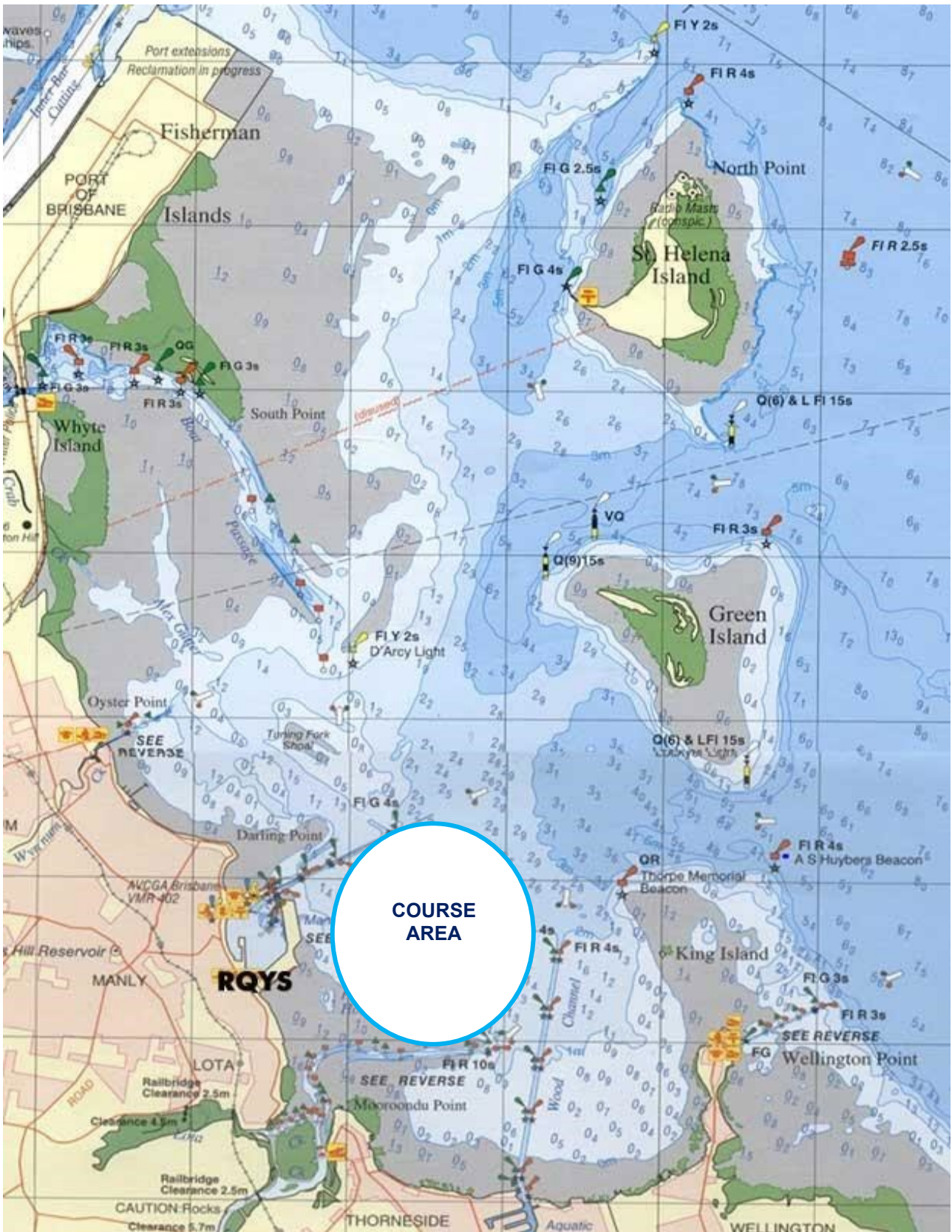
24. INSURANCE

- 24.1. Each participating boat shall be insured with valid third-party liability insurance with a minimum cover of \$10,000,000AUD per incident or the equivalent.

LOCATION INFORMATION

- [Regatta Notice Board](#) View the Regatta Notice Board to access Sailing Instructions, Entry, Amendments and more.
- Accommodation: Ample and varied accommodation is available in the local area. Early bookings are recommended.
- The Manly Marina Cove Motel is located on the grounds of RQYS – www.manlymarinacove.com
- Limited [camping](#) facilities **may** be available in the grounds of RQYS.
- Other Local Accommodation Includes:
[The Manly Hotel](#), [Waterloo Bay Hotel](#), [Pelican's Nestle Inn](#), [Wynnum Anchor Motel](#)
- Access to RQYS: RQYS Reception (located on the left as you enter the club) is available to assist with access between the hours of 7am and 7pm.
- Manly Amenities: [North Sails](#) (Sailmaker) – Club Sponsor North Sails is located just down the road from the club at 1/264 Tingal Road, an 8 minute drive away.
- [Muir Marine QLD](#) (Chandlery) - Muir Marine have been serving the Marine Industry for over 100 years and supply everything in boating equipment. Located at 453 Esplanade a 3 minute drive from the club.
- [IGA Manly Village](#) – IGA is the closest grocery store to RQYS located just 3 minute drive away, at the corner of Stratton Tce & Cambridge Parade.
- [Manly Village Medical](#) – Is the closest medical centre to RQYS, located at 25 Cambridge Parade a 2 minute drive away.
- Local Weather: The RQYS Weather Station can be found at:
<https://www.rqys.com.au/weather-station/>
- The Weather Station records from above the club Bay Lookout.
- BOM Radar: <http://www.bom.gov.au/products/IDR663.loop.shtml>
- Marine Forecast:
<http://www.bom.gov.au/qld/forecasts/moreton-bay.shtml>
- Other Popular forecasts:
Predict Wind: <https://forecast.predictwind.com/table/>
Seabreeze: <https://www.seabreeze.com.au/weather/wind-forecast/brisbane>
WillyWeather: <https://wind.willyweather.com.au/qld/brisbane/brisbane.html>

SI ATTACHMENT A



SI ATTACHMENT B

COURSE	MARKS DESCRIPTION
Start – 1 – 2 – 3 – 4 – Finish	Mark 1, 2, 3 & 4 Pink Flag on float
	Start/Finish Pin Orange Flag with Black Stripe on float.

