



OFF THE BEACH

FROSTBITE SERIES

20th April 2024
4th May 2024
18th May 2024
1st June 2024
15th June 2024

SAILING INSTRUCTIONS

(SI)

Organising Authority
ROYAL QUEENSLAND YACHT SQUADRON LTD
578 Royal Esplanade, Manly, QLD 4179

The notation '[NP]' in a rule of the sailing instructions (SIs) means that a boat may not protest another boat for breaking that rule. This changes RRS 60.1(a).

The notation [DP] in a rule of the SI's means that a protest committee can award a penalty less than disqualification (including no penalty) at their discretion. This changes Rule 64.2

The notation [SP] in a rule of the SIs means that a standard penalty may be applied by the race committee without a hearing. This changes RRS 63.1 and A5.

1. RULES

- 1.1. The event is governed by the rules as defined in The Racing Rules of Sailing.
- 1.2. Where there is a difference between the Notice of Race (NoR) and the Sailing Instructions (SI) the SI take precedence.
- 1.3. The prescriptions and special regulations of Australian Sailing (AS) Part 2 will apply ([See Here](#)) to all classes other than Etchells (see SI 1.4).
- 1.4. Etchells shall comply with AS Special Regulations Part 1, Category 7 (See [Here](#)).
- 1.5. Appendix P may apply.
- 1.6. The RQYS Constitution, Club Participation Rules, House Rules and Codes of Conduct will apply.
- 1.7. [SP] Failure to SIGN ON shall result in that boat being penalised three (3) points for the first race of the session (but not worse than DNF). Failure to SIGN OFF shall result in that boat being penalised three (3) points for the last race of the session (but not worse than DNF). Penalties shall be applied without a hearing. This changes RRS 63.1 and A5.

2. CHANGES TO SAILING INSTRUCTIONS

- 2.1. Any change to the sailing instructions will be posted before 0900 on the day it will take effect, except that any change to the schedule of races will be posted by 2000 on the day before it will take effect.

3. COMMUNICATIONS WITH COMPETITORS

- 3.1. Notices to competitors will be posted on the official notice board located at <https://www.rqys.com.au/otb-frostbite/>.
- 3.2. The race office is located at The RQYS Sailing Office located adjacent to the Main Rigging Lawn, telephone 3396 8666, email sailing@rqys.com.au .
- 3.3. [DP] While racing, except in an emergency, a boat shall not make voice or data transmissions and shall not receive voice or data communication that is not available to all boats.

4. CODE OF CONDUCT

- 4.1 [DP] [NP] Competitors and support persons shall comply with reasonable requests from race officials.
- 4.2 [DP] [NP] Competitors and support persons shall handle any equipment or place advertising provided by the organizing authority with care, seamanship, in accordance with any instructions for its use and without interfering with its functionality.

5. SIGNALS MADE ASHORE

- 5.1. Signals made ashore will be displayed at the official flag pole located at the top of the Eastern Gangway of the Bill Kirby Docks.
- 5.2. When flag AP is displayed ashore, '1 minute' is replaced with 'not less than 45 minutes' in Race Signals AP.

6. SCHEDULE OF RACES

6.1. Dates of Racing:

Date	Event	Time/First Warning
20th April 2024	Northern Course	Not Before 1300 hrs
04th May 2024	Southern Course	Not Before 1330 hrs
18th May 2024		
1st June 2024		
15th June 2024		

6.2. There will be a maximum of two (2) races per day.

6.3. To alert boats that a race or sequence of races will begin soon, the orange starting line flag will be displayed with one sound at least five minutes before a warning signal is made.

6.4. No warning signal will be made after 1530hrs.

7. CLASS FLAGS

7.1.

Fleet	Flag
Northern Course	
Etchells	White with Blue Class Insignia
Nacra 15	White with Blue Class Insignia
Hobie 16	Blue with Black Class Insignia
VX One	White with Black Class Insignia
12ft, 14ft, 16ft and 18ft Skiffs	Yellow and Blue 12ft Class Flag
29er	White with Red 29er Class Insignia
Northern Mixed Fleet	Yellow Flag
Northern Mixed Catamaran	Code Flag E
Southern Course	
Finn & Contenders	White with Blue Finn Class Insignia
OK Dinghy	White with Red OK Dinghy Insignia
ILCA 7	White with Red Class Insignia
ILCA 6	Green with Red Class Insignia
ILCA 4	Yellow with Red Class Insignia
Sailboards	White with Red Bic Techno Class Insignia
Flying 11	White with Blue Class Insignia
RS Feva	Code Flag E
Optimist and Sabot	White with Optimist Black Insignia
Southern Mixed Fleet	Yellow Flag

8. RACING AREA

8.1 SI Attachment A displays the approximate race areas.

9. COURSES

9.1. The diagrams in SI Attachment B shows the courses, including the approximate angles between legs, the order in which marks are to be passed, and the side on which each mark is to be left.

- 9.2. No later than the warning signal, the race committee signal vessel will display the approximate compass bearing of the first leg.

10. MARKS

- 10.1. Marks are as described in SI Attachment B
10.2. If one of the gate marks is missing then the remaining mark shall be left to port.

11. THE START

- 11.1. The starting line is between a staff displaying an orange flag on the signal vessel at the starboard end and the course side of the port-end starting mark.
11.2. [DP] [NP] Classes whose warning signal has not been made shall avoid the starting area during the starting sequence for other races.
11.3. A boat that does not start within 4 minutes after her starting signal will be scored Did Not Start without a hearing. This changes RRS A5.1 and A5.2.

12. CHANGE OF THE NEXT LEG OF THE COURSE

- 12.1. To change the next leg of the course, the race committee will lay a new mark (or move the finishing line) and remove the original mark as soon as practicable. When in a subsequent change a new mark is replaced, it will be replaced by an original mark.
12.2. If mark 1 is changed mark 1A shall be ignored.

13. THE FINISH

- 13.1. The finishing line is between a staff displaying a blue flag on the finishing vessel at the starboard end and the course side of the port end finishing mark.
13.2. Attention is drawn to mark 4p (windward leeward) or 3p (trapezoid) needing to be observed before finishing (See SI Attachment B).

14. PENALTY SYSTEM

- 14.1. For the skiff and multihull, RRS 44.1 is changed so that the Two-Turn Penalty is replaced by a One-Turn Penalty.
14.2. A boat which Does Not Compete (DNC) in a race shall be scored the number competitors within the fleet at the starting area, plus an additional three (3) points. This changes RRS A10.

15. TIME LIMITS AND TARGET TIMES

- 15.1. The time limit for the first boat in each class will be 60 minutes.
15.2. The Target Times are as follows:

Class	Target Time
Windsurfing	25 minutes
Optimist, Sabot, O'pen Skiff, Mixed Southern Course	30 minutes
All Laser, Flying 11, 125, OK Dinghy, Finn, Etchells, 9ers, Nacra15, Hobie 16, Mixed Northern Course	40 minutes

- 15.3. With the exception of the Optimist and Flying 11 classes, boats failing to finish within 15 minutes after the first boat sails the course and finishes shall be scored Did Not Finish (DNF) without a hearing. This changes RRS 35, A4 and A5.
15.4. Optimist and Flying 11 boats failing to finish within 25 minutes after the first boat sails the course and finishes shall be scored Did Not Finish (DNF) without a hearing. This changes RRS 35, A4 and A5.

16. HEARING REQUESTS

- 16.1. Protest forms are available at the RQYS Sailing Office. Protests and requests for redress or reopening shall be delivered there within the appropriate time limit.
- 16.2. For each class, the protest time limit is 60 minutes after the last boat has finished the last race of the day or the race committee signals no more racing today, whichever is later.
- 16.3. Notices shall be posted on the online notice board no later than 30 minutes after the protest time limit to inform competitors of hearings in which they are parties or named as witnesses. Hearings shall be held in the specified protest room, beginning at the time posted.
- 16.4. Notices of protests by the Race Committee or Protest Committee shall be posted to inform boats under RRS 61.1(b).
- 16.5. All marine incidents must be reported to the Race Committee in addition to regulatory requirements to report marine incidents to Marine Safety Queensland (MSQ).

17. SCORING

- 17.1. Three (3) races are required to be completed to constitute a series.
- 17.2. When fewer than four (4) races have been completed, a boat's series score will be the total of her race scores.
- 17.3. When from four (4) to six (6) races have been completed, a boat's series score will be the total of her race scores excluding her worst score.
- 17.4. When from seven (7) to eight (8) races have been completed, a boat's series score will be the total of her race scores excluding her two worst score.
- 17.5. Average points may be requested for season entries when racing is missed due to competing at a National or International class regatta or a World Sailing ranked event in the competitor's class, or in any other circumstance approved by the Sailing Committee.
 - 17.5.1. These points shall be awarded for no more than five (5) days in a season.
 - 17.5.2. To receive average points, sailors must request average points in advance by emailing sailing@rqys.com.au and have this approved by the Sailing Office BEFORE the missed day's racing.
 - 17.5.3. Average Points will be awarded as per RRS A10 (b) only if there have been two (2) races in the series before the race the competitor is applying for average points for. If there have not been two (2) races in the series already, the Race Committee will determine the application of average points.

18. SAFETY REGULATIONS

- 18.1. [SP] All skippers shall SIGN ON before racing each day and SIGN OFF at the earliest possible time after the completion of racing (but not later than the end of protest time).
- 18.2. The skipper of a boat that retires or does not intend to continue racing is required to SIGN OFF immediately on return to shore.
- 18.3. A boat that retires from a race shall notify the race committee as soon as possible.
- 18.4. All Maritime Queensland Aquatic Event conditions must be followed including:
 - 18.4.1. All sailing vessels shall give way to powered vessels at all times whilst inside the Manly Boat Harbour.
 - 18.4.2. Once outside the Manly Boat Harbour, competitors are to as soon as possible stay outside of the main channel, keeping clear of powered vessels.
 - 18.4.3. No Spinnakers are to be flown in the Manly Harbour 6-knot area.
- 18.5. [NP] [DP] Boats failing to comply with SI18.4 may be protested by the Race Committee and receive a penalty less than DSQ as decided by the Protest Committee. This changes rules 63.1, A4 and A5.

19. [DP] [NP] REPLACEMENT OF CREW OR EQUIPMENT

- 19.1. With written approval from the Organising Authority, skippers may change boats, sails and equipment throughout the season and retain points if they remain in the same class.
- 19.2. Boats intending to race with a sail number other than stipulated on their entry shall complete the Change to Sail Number register prior to racing. Failure to comply shall result in the boat being scored DNC without a hearing for all races on that day. This changes RRS 63.1, A4 and A5.

20. EQUIPMENT AND MEASUREMENT CHECKS

- 20.1. A boat or equipment may be inspected at any time for compliance with the class rules, notice of race and sailing instructions.
- 20.2. [DP] [NP] When instructed by a race official on the water, a boat shall proceed to a designated area for inspection.

21. OFFICIAL VESSELS

- 21.1. Official boats shall be marked with a white flag with black letters 'RC' or red letters "MEDIA".
- 21.2. Club Coaches may provide advice to any competitor during club racing.

22. TRASH DISPOSAL

- 22.1. Trash may be placed aboard official or support person vessels.

23. PRIZES

- 23.1. Prizes will be awarded to 1st, 2nd and 3rd in each class/division for which 5 or more entries are received.

24. RISK STATEMENT

- 24.1. RRS 3 states: 'The responsibility for a boat's decision to participate in a race or to continue to race is hers alone.' By participating in this event each competitor agrees and acknowledges that sailing is a potentially dangerous activity with inherent risks. These risks include strong winds and rough seas, sudden changes in weather, failure of equipment, boat handling errors, poor seamanship by other boats, loss of balance on an unstable platform and fatigue resulting in increased risk of injury. **Inherent in the sport of sailing is the risk of permanent, catastrophic injury or death by drowning, trauma, hypothermia or other causes.**
- 24.2. All participants are required to comply with any safety provisions as mandated under the Racing Rules of Sailing, the Australian Sailing Special Regulations Part 2 for Off The Beach Boats, and any Class Rules that may apply. The Squadron encourages and supports competitors who believe it is appropriate to exceed the above requirements (such as the wearing of helmets, body armor, impact vests, etc.) if they or their guardian believe that conditions and their personal circumstances warrant. All competitor's attention is drawn to the Risk Statement - Section 24 of the Sailing Instructions.

25. INSURANCE

- 25.1. Each participating boat shall be insured with valid third-party liability insurance with a minimum cover of \$10,000,000AUD per incident or the equivalent.

26. FURTHER INFORMATION

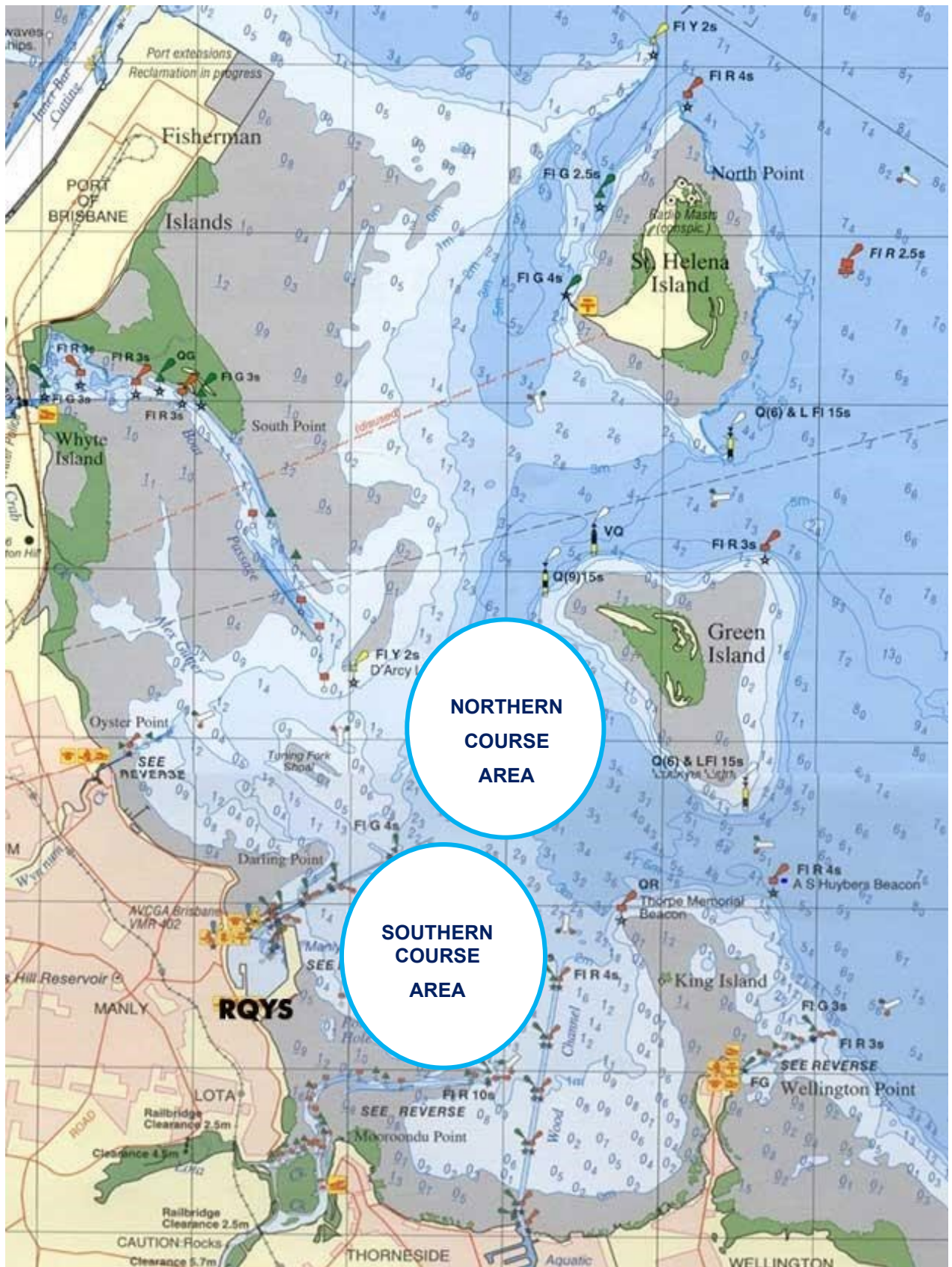
- 26.1. For further information please contact:

RQYS Sailing: 07 3396 8666 / sailing@rqys.com.au
578 Royal Esplanade MANLY QLD 4179 AUS
www.rqys.com.au

LOCATION INFORMATION

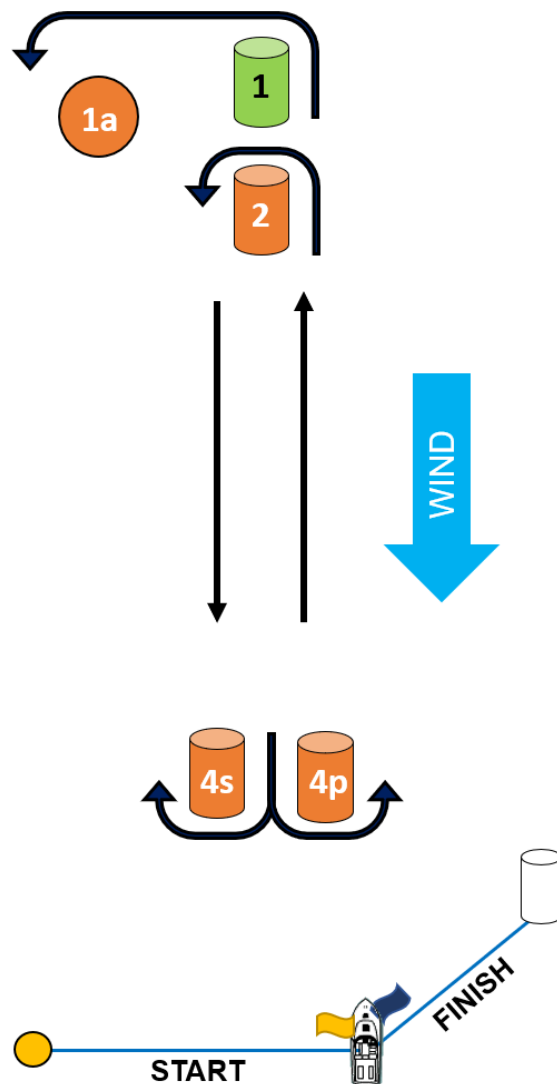
- [Regatta Notice Board](#) View the RQYS Notice Board to access Sailing Instructions, Entry, Amendments and more
- Accommodation: Ample and varied accommodation is available in the local area. Early bookings are recommended.
- The Manly Marina Cove Motel is located on the grounds of RQYS – www.manlymarinacove.com
- Limited [camping](#) facilities **may** be available in the grounds of RQYS.
- Other Local Accommodation Includes:
[The Manly Hotel](#), [Waterloo Bay Hotel](#), [Pelican's Nestle Inn](#), [Wynnum Anchor Motel](#)
- Access to RQYS: RQYS Reception (located on the left as you enter the club) is available to assist with access between the hours of 7am and 7pm.
- Manly Amenities: [North Sails](#) (Sailmaker) – Club Sponsor North Sails is located just down the road from the club at 1/264 Tingal Road, an 8 minute drive away.
- [Muir Marine QLD](#) (Chandlery) - Muir Marine have been serving the Marine Industry for over 100 years and supply everything in boating equipment. Located at 453 Esplanade a 3 minute drive from the club.
- [IGA Manly Village](#) – IGA is the closest grocery store to RQYS located just 3 minute drive away, at the corner of Stratton Tce & Cambridge Parade.
- [Manly Village Medical](#) – Is the closest medical centre to RQYS, located at 25 Cambridge Parade a 2 minute drive away.
- Local Weather: The RQYS Weather Station can be found at:
<https://www.rqys.com.au/weather-station/>
The Weather Station records from above the club Bay Lookout.
- BOM: Radar: <http://www.bom.gov.au/products/IDR663.loop.shtml>
Marine Forecast:
<http://www.bom.gov.au/qld/forecasts/moreton-bay.shtml>
- Other Popular forecasts:
Predict Wind: <https://forecast.predictwind.com/table/>
Seabreeze: <https://www.seabreeze.com.au/weather/wind-forecast/brisbane>

SI Attachment A



SI Attachment C – Northern & Southern Course(s)

Course: Windward / Leeward		
CODE	COURSE	MARKS DESCRIPTION
LA1	Start – 1 – 1a – 4p – Finish	Marks 1: Green Inflatable
LA2	Start – 1 – 1a – 4s/4p – 1 – 1a – 4p – Finish	Mark 2 & 4s/4p: Orange Inflatables
LA3	Start – 1 – 1a – 4s/4p – 1 – 1a – 4s/4p – 1 – 1a – 4p – Finish	Start Pin & 1a: Orange Tear-drop
L1	Start – 2 – 4p – Finish	Finish Pin: White Inflatable
L2	Start – 2 – 4s/4p – 2 – 4p – Finish	Change Mark: Mark 1: Yellow Inflatable
L3	Start – 2 – 4s/4p – 2 – 4s/4p – 2 – 4p – Finish	Mark 2: Purple Inflatable



Course: Trapezoid		
CODE	COURSE	MARKS DESCRIPTION
I2	Start – 1 – 4s/4p – 1 – 2 – 3p – Finish	Marks 1, 2: Yellow Inflatables Marks 1a & 2a: Orange Inflatables 3s/3p & 4s/4p: Purple Inflatables Start pin: Orange Teardrops Finish pin: White Inflatable Change Mark: White Inflatable
I3	Start – 1 – 4s/4p – 1 – 4s/4p – 1 – 2 – 3p – Finish	
I2a	Start – 1a – 4s/4p – 1a – 2a – 3p – Finish	
I3a	Start – 1a – 4s/4p – 1a – 4s/4p – 1a – 2a – 3p – Finish	
O1	Start – 1 – 2 – 3p – Finish	
O2	Start – 1 – 2 – 3s/3p – 2 – 3p – Finish	
O3	Start – 1 – 2 – 3s/3p – 2 – 3s/3p – 2 – 3p – Finish	
O1a	Start – 1a – 2a – 3p – Finish	
O2a	Start – 1a – 2a – 3s/3p – 2a – 3p – Finish	
O3a	Start – 1a – 2a – 3s/3p – 2a – 3s/3p – 2a – 3p – Finish	

