



2024 ILCA OCEANIA and AUSTRALIAN MASTERS CHAMPIONSHIPS

12th to 15th April 2024

SAILING INSTRUCTIONS (SI)

Organising Authority

ROYAL QUEENSLAND YACHT SQUADRON LTD

578 Royal Esplanade, Manly, QLD 4179

The notation '[NP]' in a rule of the sailing instructions (SIs) means that a boat may not protest another boat for breaking that rule. This changes RRS 60.1(a).

The notation '[DP]' in a rule of the sailing instructions (SI's) means that a protest committee can award a penalty less than disqualification (including no penalty) at their discretion. This changes Rule 64.2

The notation '[SP]' in a rule of the SIs means that a standard penalty may be applied by the race committee without a hearing. This changes RRS 63.1 and A5.

1. RULES

- 1.1. The event is governed by the rules as defined in The Racing Rules of Sailing.
- 1.2. The Australian Sailing prescriptions and special regulations part 2 apply.
- 1.3. Appendix T – Arbitration will apply.
- 1.4. The rules and by-laws of the International Laser Class Association (ILCA) apply.
- 1.5. Competitors must follow RQYS Club Policies (<https://www.rqys.com.au/policiesanddocuments/>).

2. CHANGES TO SAILING INSTRUCTIONS

- 2.1. Any change to the sailing instructions will be posted before 0900 on the day it will take effect, except that any change to the schedule of races will be posted by 2000 on the day before it will take effect.

3. COMMUNICATIONS WITH COMPETITORS

- 3.1. Notices to competitors will be posted on the official notice board located at <https://www.rqys.com.au/ilca-masters-24/>.
- 3.2. Secondary to the Official Noticeboard “instant messaging” system WhatsApp may be used to notify skippers of timely information, confirmation of days course, Protest Time limit etc. if in use a link to join the group can be found on the Office Noticeboard.
- 3.3. The race office is located at The RQYS Sailing Office located adjacent to the Main Rigging Lawn, telephone 3396 8666, email sailing@rqys.com.au .
- 3.4. [DP] While racing, except in an emergency, a boat shall not make voice or data transmissions and shall not receive voice or data communication that is not available to all boats.

4. CODE OF CONDUCT

- 4.1 [DP] Competitors and support persons shall comply with reasonable requests from race officials.
- 4.2 [DP] Competitors and support persons shall handle any equipment or place advertising provided by the organizing authority with care, seamanship, in accordance with any instructions for its use and without interfering with its functionality.

5. SIGNALS MADE ASHORE

- 5.1. Signals made ashore will be displayed at the official flag pole located at the top of the Eastern Gangway of the Bill Kirby Docks.
- 5.2. When flag AP is displayed ashore, ‘1 minute’ is replaced with ‘not less than 45 minutes’ in Race Signals AP.

6. SCHEDULE OF RACES

Date	Activity	Time
Thursday 11/04/24	Early Registration	1300 to 1700
	Charter Boat Allocation	0900 to 1700
Friday 12/04/24	Registration	0900 to 1200
	Competitor Briefing	Rigging lawn at 1200
	Races 1 and 2	First Warning not before 1330 Races back to back
Saturday 13/04/24	Races 3, 4 and 5	First Warning not before 1300 Races back to back
Sunday 14/04/24	Races 6, 7 and 8	First Warning not before 1300 Races back to back
	Regatta Function	1800 for 1830 Free for Competitors
Monday 15/04/24	Races 9 and 10	First Warning not before 1100 Races back to back
	Sausage Sizzle and Presentation	ASAP after sailing

6.1. ILCA4, ILCA6 & ILCA 7 are planned to have separate starts, the OA may combine fleets based on number of entry.

6.2. On the last scheduled day of racing no warning signal will be made after 1500hrs.

7. CLASS FLAGS

7.1. The class flags are:

7.1.1. ILCA 4 Yellow flag with Red Class Insignia.

7.1.2. ILCA 6 Green flag with Red Class Insignia.

7.1.3. ILCA 7 White flag with Red Class Insignia.

8. RACING AREA

8.1 SI Attachment A shows the approximate location of the racing area.

9. COURSES

9.1. The diagrams in SI Attachment B shows the courses, including the approximate angles between legs, the order in which marks are to be passed, and the side on which each mark is to be left.

9.2. No later than the warning signal, the race committee signal vessel will display the course to be sailed and the approximate compass bearing of the first leg.

9.3. The courses to be sailed will be trapezoid course.

10. MARKS

10.1. Marks will be as described in SI Attachment B.

11. THE START

- 11.1. The starting line is between a staff displaying an orange flag on the signal vessel at the starboard end and the course side of the port-end starting mark.
- 11.2. Boats whose warning signal has not been made shall avoid the starting area during the starting sequence for other races.
- 11.3. A boat that does not start within four (4) minutes after her starting signal will be scored Did Not Start without a hearing. This changes RRS A5.1 and A5.2.

12. CHANGE OF THE NEXT LEG OF THE COURSE

- 12.1. To change the next leg of the course, the race committee will lay a new mark (or move the finishing line) and remove the original mark as soon as practicable. When in a subsequent change a new mark is replaced, it will be replaced by an original mark.

13. THE FINISH

- 13.1. The finishing line will be between a staff displaying a blue flag on the finishing boat at the starboard-end and the course side of the port-end finishing mark.

14. TIME LIMITS AND TARGET TIMES

- 14.1. The Race Time Limit (see RRS 35), and the Finishing Window are shown in the table below.

Division	Target Time	Race Time Limit	Finishing Window
ILCA 4	50 minutes	75 minutes	15 minutes
ILCA 6	50 minutes	75 minutes	15 minutes
ILCA 7	50 minutes	75 minutes	15 minutes

- 14.2. The Finishing Window is the time for boats to finish after the first boat in their division sails the course and finishes. Boats failing to finish within the Finishing Window, and not subsequently retiring, penalized or given redress, will be scored Time Limit Expired (TLE) without a hearing. A boat scored TLE shall be scored points for the finishing place one more than the points scored by the last boat that finished within the Finishing Window. This changes RRS 35, A5.1, A5.2 and A10.
- 14.3. Failure to meet the Target Time will not be grounds for redress. This changes RRS 62.1(a).

15. HEARING REQUESTS

- 15.1. For each division, the protest time limit is 60 minutes after the last boat in that division finishes the last race of the day or the race committee signals no more racing today, whichever is later. The time will be posted on the official notice board.
- 15.2. Hearing request forms are available from the race office or at <https://www.rqys.com.au/documents-auditing/>.
- 15.3. Notices will be posted no later than 30 minutes after the protest time limit to inform competitors of hearings in which they are parties or named as witnesses. Hearings will be held at a time and place advised on the hearing notice.

16. SCORING

- 16.1. Ten races are scheduled for this series.
- 16.2. Four races are required to be completed to constitute a series.
- 16.3. When fewer than six (6) races have been completed, a boat's series score will be the total of her race scores.
- 16.4. When six (6) to eight (8) races have been completed, a boat's series score will be the total of her race scores excluding her worst score
- 16.5. When more than 8 races have been completed, a boat's series score will be the total of her race scores excluding her worst two (2) scores.
- 16.6. Category results will be based on each group of category boats overall positions in their division fleet.

17. SAFETY REGULATIONS

- 17.1. All skippers shall SIGN ON before racing each day and SIGN OFF at the earliest possible time after the completion of racing (but not later than the end of protest time). The sign on will be available near the Sailing Office & the Main Rigging Lawn.
- 17.2. [SP] Failure to SIGN ON shall result in that boat being penalised three (3) points for the first race of the session (but not worse than DNF). Failure to SIGN OFF shall result in that boat being penalised three (3) points for the last race of the session (but not worse than DNF). Penalties shall be applied without a hearing. This changes RRS 63.1 and A5.
- 17.3. All Maritime Queensland Aquatic Event conditions must be followed including:
 - 17.3.1. All Participating ships are not to impede power driven vessels traversing Manly Boat Harbour and associated channels.
 - 17.3.2. All Participating ships are to obey the gazetted speed limit in Manly Boat Harbour (6 knots).
- 17.4. No sailing vessel shall berth on or impede traffic to/from the RQYS fuel dock with out permission from the RQYS Sailing or Marina Office.

18. REPLACEMENT OF EQUIPMENT

- 18.1. [DP] Substitution of damaged or lost equipment is not allowed unless authorized in writing by the Race Committee. Requests for substitution shall be made to the committee at the first reasonable opportunity, which may be after the race.

19. EQUIPMENT AND MEASUREMENT CHECKS

- 19.1. A boat or equipment may be inspected at any time for compliance with the class rules, notice of race and sailing instructions.
- 19.2. [DP] When instructed by a race official on the water, a boat shall proceed to a designated area for inspection.

20. OFFICIAL VESSELS

- 20.1. Official vessels will be identified by display of a white flag with black letters "RC" or red "MEDIA"

21. [DP] SUPPORT TEAMS

- 21.1. Team leaders, coaches and other support persons shall stay outside areas where boats are racing from the time of the preparatory signal for the first start until all boats have finished or retired or the race committee signals a postponement, general recall or abandonment.

22. TRASH DISPOSAL

- 22.1. Trash may be placed aboard official or support person vessels.

23. BERTHING

- 23.1 Restrictions may be placed on where vessels may be stored or rigged by the RQYS Sailing or Marina Office.
- 23.2 Boats may only be stored on the RQYS rigging lawn for the duration of the regatta & 24hrs before/after the regatta, unless otherwise approved by the OA.
- 23.3 No tie down restraints may penetrate the ground deeper than 300mm due to lawn irrigation systems.

24. PRIZES

- 24.1. ILCA Cubes and other prizes will be awarded in accordance with ILCA rules.

25. RISK STATEMENT

- 25.1. RRS 3 states: 'The responsibility for a boat's decision to participate in a race or to continue to race is hers alone.' By participating in this event each competitor agrees and acknowledges that sailing is a potentially dangerous activity with inherent risks. These risks include strong winds and rough seas, sudden changes in weather, failure of equipment, boat handling errors, poor seamanship by other boats, loss of balance on an unstable platform and fatigue resulting in increased risk of injury. **Inherent in the sport of sailing is the risk of permanent, catastrophic injury or death by drowning, trauma, hypothermia or other causes.**
- 25.2. All participants are required to comply with any safety provisions as mandated under the Racing Rules of Sailing, the Australian Sailing Special Regulations Part 2 for Off The Beach Boats, and any Class Rules that may apply. The Squadron encourages and supports competitors who believe it is appropriate to exceed the above requirements (such as the wearing of helmets, body armor, impact vests, etc.) if they or their guardian believe that conditions and their personal circumstances warrant. All competitor's attention is drawn to the Risk Statement - Section 15 of the Notice of Race & 25 of the Sailing Instructions.

26. INSURANCE

- 26.1. Each participating boat shall be insured with valid third-party liability insurance with a minimum cover of \$10,000,000AUD per incident or the equivalent.

27. FURTHER INFORMATION

- 27.1. For further information please contact:

Queensland ILCA Association (QILCA)

Michael Wilson wilsomichael58@gmail.com or 0417758859

Royal Queensland Yacht Squadron (RQYS)

Sailing Office: sailing@rqys.com.au / 07 3396 8666

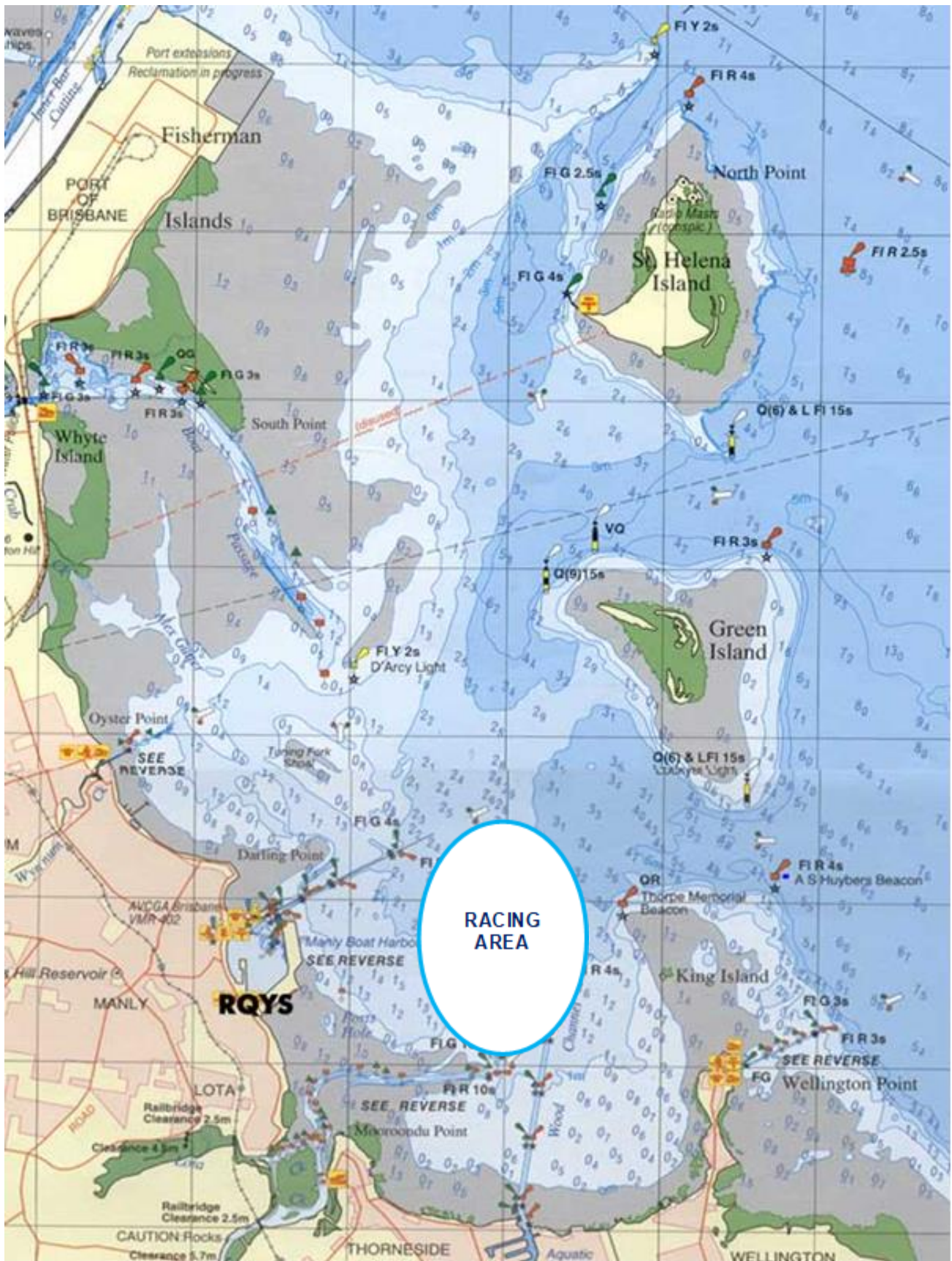
578 Royal Esplanade MANLY QLD 4179 AUS

www.rqys.com.au

LOCATION INFORMATION

Regatta Notice Board	View the Regatta Notice Board to access Sailing Instructions, Entry, Amendments and more
Accommodation:	Ample and varied accommodation is available in the local area. Early bookings are recommended. The Manly Marina Cove Motel is located on the grounds of RQYS – www.manlymarinacove.com Limited camping facilities may be available in the grounds of RQYS.
Access to RQYS:	RQYS Reception is available to assist with access between the hours of 7am and 7pm.
Boat Storage:	Competitors arriving more than a week prior to the commencement of the regatta should contact RQYS Sailing Office to make appropriate arrangements for access and storage. Boats can be stored on the Main Rigging Lawn, for the duration of the regatta. RQYS Sailing Office: sailing@rqys.com.au +61 7 3396 8666 Ext 6.
Charter Boats	Charter boats are available from: NBsportsail. http://www.nbsailsports.com.au Performance Sailcraft Australia. https://psasailing.com.au .

SI ATTACHMENT A



SI ATTACHMENT B

CODE	COURSE	MARKS DESCRIPTION
I2	Start – 1 – 4s/4p – 1 – 2 – 3p – 5 - Finish	Marks 1, 2: Yellow Inflatables
I3	Start – 1 – 4s/4p – 1 – 4s/4p – 1 – 2 – 3p – 5 – Finish	Marks 1a & 2a: Orange Inflatables
I2a	Start – 1a – 4s/4p – 1a – 2a – 3p – 5 - Finish	3s/3p & 4s/4p: Purple Inflatables
I3a	Start – 1a – 4s/4p – 1a – 4s/4p – 1a – 2a – 3p – 5 - Finish	Start pin: Orange Teardrops
O1	Start – 1 – 2 – 3p – 5 - Finish	Finish pin: White Inflatable
O2	Start – 1 – 2 – 3s/3p – 2 – 3p – 5 - Finish	Change Mark: White Inflatable
O3	Start – 1 – 2 – 3s/3p – 2 – 3s/3p – 2 – 3p – 5 - Finish	
O1a	Start – 1a – 2a – 3p – 5 – Finish	
O2a	Start – 1a – 2a – 3s/3p – 2a – 3p – 5 - Finish	
O3a	Start – 1a – 2a – 3s/3p – 2a – 3s/3p – 2a – 3p – 5 - Finish	

