

RQYS SAILING CRUISING GROUP

A Cruise in “Pursuit of Essence”

Cruise weekend dates: Friday 19 April to Sunday 21 April 2024

Cruise Destination (weather permitting): RQYS to Bribie Island passage, then on to Sandhills.

Cruise Captains: Bryan and Suzanne Bailie (SV Ocean Essence)

Mobile: 0448 050 025

Email: sailcruising@rqys.com.au

RSVP: Wednesday 17 April 2024

Cruise Overview:

“Pursuit” is the action of pursuing someone or something, and “Essence” is the truth of our very presence, the purity of our consciousness and awareness.

The Oyster Bar on the foreshore of the Sandstone Hotel is calling for the RQYS Cruising Group to lighten up the atmosphere with their presence for sundowners followed by board or lawn games with the option to have dinner ashore at either the Oyster Bar or at the Sandstone Hotel.

The following morning the sands and beaches of Sandhills will be calling for us to enjoy. We will depart Bribie Island passage to sail to Sandhills. This passage will involve a pursuit race with start times allocated based on skipper predictions as to how long they anticipate taking to sail from Bribie Island passage to Sandhills. First monohull and first multihull win. Prize giving will be held on the Sandhills beach during sundowners.

The following day will be a leisure day at Sandhills and include a beach walk and or swim before departing for your home marina.

Cruise Itinerary:

Friday 19 April 2024

08h00 onwards – at the time you choose and at your leisure depart your berth for Bribie Island passage.

16h00 – Meet at the Oyster Bar, Sandstone Hotel for drinks, dinner, and games. Each vessel to bring a game to play, choice of games to be played and teams will be made on the day.

Skippers to declare anticipated passage time from Bribie Island passage to Sandhills. This information will be used to determine vessel start times on Saturday.

Saturday 20 April 2024

08h00 to 09h00 - Depart Bribie Island passage to cross the nominated start line at the time allocated for your start.

Pursuit race to Sandhills. Routes to Sandhills can either be via the west passage or the east passage when leaving Bribie Island.

Call Cruise captain on channel 77 to advise finish time at nominated Sandhills finish line.

16h00 – Sandhills beach for sundowners and pursuit race giving.

Sunday 21 April 2024

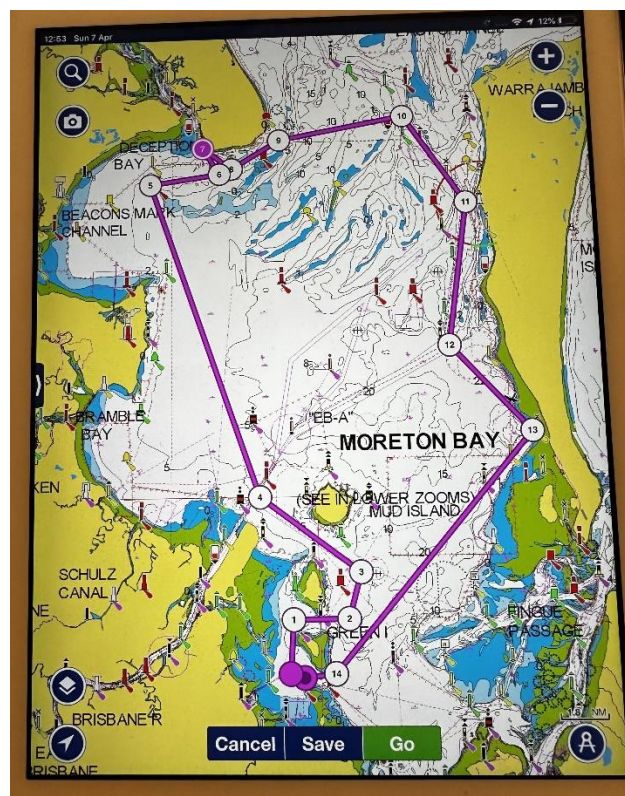
Leisure day at Sandhills.

10h00 - Beach walk, swim for those interested.

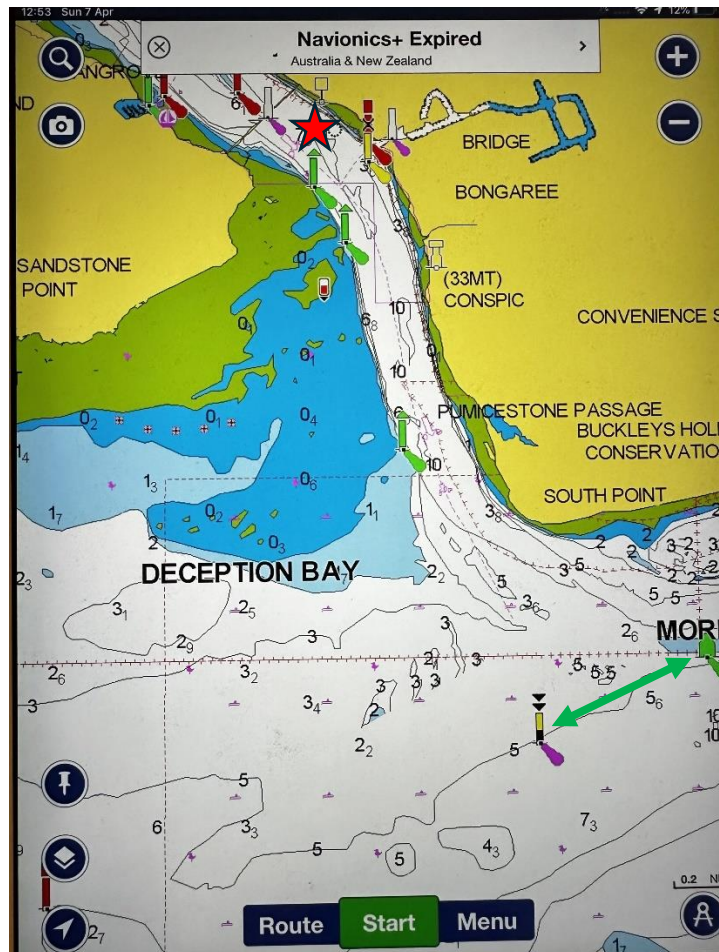
Depart at your own leisure to return to your marina.

Cruise diagrams:

Outline of the cruise on Moreton Bay



Bribie Island Pumicestone Passage Anchorage Area



The red star is the recommended anchorage area. There is current flow in the passage, make sure anchors are well set and enough chain scope is let out. Some areas of the seabed are rocky. Suggested anchor area is immediately south of the Bribie Island bridge and north of the canal outlet from Bribie Island.

The pursuit race start line is the transit line between the isolated danger mark and the green channel mark at the exit of Pumicestone passage.

The pursuit finish line is the transit between the yellow special purpose beacon immediately off the Sandhills beach and the yellow special purpose beacon to the southwest of the anchorage.

Radio Schedules:

On departure day and cruise days monitor channel 67 for Radio Sched announcement, then moving to channel 77 to check in. If you miss the sched, please send a text message to let us know you have departed and your ETA.

Cruise Briefing:

No briefing prior to departure, this notice serves as the cruise briefing document.

Tide Information:

Brisbane Bar Tide Times:

Fri 19	12:02 AM AEST 0.81 m	6:29 AM AEST 2.02 m	12:59 PM AEST 0.63 m	7:05 PM AEST 1.80 m
Sat 20	12:57 AM AEST 0.72 m	7:11 AM AEST 2.06 m	1:34 PM AEST 0.53 m	7:44 PM AEST 1.95 m
Sun 21	1:43 AM AEST 0.65 m	7:49 AM AEST 2.08 m	2:07 PM AEST 0.45 m	8:19 PM AEST 2.08 m
Mon 22	2:24 AM AEST 0.59 m	8:25 AM AEST 2.08 m	2:38 PM AEST 0.40 m	8:54 PM AEST 2.18 m

Bribie Island Passage Tide Times:

Friday 19 April 2024		Saturday 20 April 2024	
Time	Height	Time	Height
0705	1.75	0129	0.60
1332	0.51	0747	1.77
1943	1.55	1405	0.44

The tide times are in metres above Prediction Datum, *red for low water* and *green for high water*. The times stated are Australian Eastern Standard Time.

Note for Skippers:

Skippers of participating vessels need to be aware that participation in the RQYS Sail Cruising Group events has the potential for dangerous circumstances to arise and that the responsibility for taking part or continuing to participate in Sail Cruising Group events remains solely with you as the skipper. You must exercise appropriate seamanship and discretion as to whether you should participate in or continue with any cruise.

RQYS Sail Cruising Group Committee