



2024 SOUTH QUEENSLAND SCHOOLS TEAM RACING CHAMPIONSHIP

17th & 24th March 2024

SAILING INSTRUCTIONS (SI)

Organising Authority

ROYAL QUEENSLAND YACHT SQUADRON LTD

578 Royal Esplanade, Manly, QLD 4179

The notation '[NP]' in a rule of the sailing instructions (SIs) means that a boat may not protest another boat for breaking that rule. This changes RRS 60.1(a).

The notation '[DP]' in a rule of the sailing instructions (SI's) means that a protest committee can award a penalty less than disqualification (including no penalty) at their discretion. This changes Rule 64.2

1. RULES

- 1.1. The event is governed by the rules as defined in The Racing Rules of Sailing and umpired as per the Teams Racing Rules (RRS Appendix D).
- 1.2. The prescriptions and special regulations of Australia Sailing (AS) Part 2 will apply.
- 1.3. Where there is a difference between the Notice of Race (NoR) and the Sailing Instructions (SI) the SI take precedence.
- 1.4. Competitors must follow Club Policies (<https://www.rqys.com.au/policiesanddocuments/>)

2. CHANGES TO SAILING INSTRUCTIONS

- 2.1. Any change to the sailing instructions will be posted before 0830 on the day it will take effect, except that any change to the schedule of races will be posted by 2000 on the day before it will take effect.

3. COMMUNICATIONS WITH COMPETITORS

- 3.1. Notices to competitors will be posted on the official notice board located at <https://www.rqys.com.au/school-sailing/>.
- 3.2. The race office is located at The RQYS Sailing Office located adjacent to the Main Rigging Lawn, telephone 3396 8666, email sailing@rqys.com.au .
- 3.3. [DP] [NP] While racing, except in an emergency, a boat shall not make voice or data transmissions and shall not receive voice or data communication that is not available to all boats.

4. [DP] [NP] CODE OF CONDUCT

- 4.1 Competitors and support persons shall comply with reasonable requests from race officials.
- 4.2 Competitors and support persons shall handle any equipment by the organizing authority with care, seamanship, in accordance with any instructions for its use and without interfering with its functionality.

5. SIGNALS MADE ASHORE

- 5.1. Signals made ashore will be displayed at the official flag pole located at the top of the Eastern Gangway of the Bill Kirby Docks.
- 5.2. When flag AP is displayed ashore, '1 minute' is replaced with 'not less than 30 minutes' in Race Signals AP.

6. SCHEDULE OF RACES

6.1.

DATE	EVENT	TIME
Sunday 17 March 2024	Compulsory Competitors Briefing outside the Sailing Office	0900 hrs
	First Warning Signal	1000 hrs
	No Warning Signal After	1600 hrs
Sunday 24 March 2024	Compulsory Competitors Briefing outside the Sailing Office	0900 hrs
	First Warning Signal	1000 hrs
	No Warning Signal After	1500 hrs
	Presentation on the Rigging Lawn	After Racing

7. CLASS FLAGS

7.1. The class flag ashore will be the Pacer Class flag.

8. RACING AREA

8.1 SI Attachment A shows the location of the racing area.

9. COURSES

9.1. The diagram in SI Attachment B shows the course, including the approximate angles between legs, the order in which marks are to be passed, and the side on which each mark is to be left.

10. MARKS

10.1 Marks are as described in SI Attachment B.

11. THE START

11.1. Races will be started as described below. This changes RRS 26.

11.1.1. Audible signals shall govern the start.

11.1.2. The race number shall be displayed on the start boat prior to the warning signal.

11.1.3. The starting sequence shall be:

SIGNAL	TIME BEFORE START- ING SIGNAL	SOUND SIGNAL	VISUAL INDICATION FLAGS
Warning	3 Minutes	3 Long	3 Blue Flags
Preparatory	2 Minutes	2 Long	2 Blue Flags
One (1) Minute	1 Minute	1 Long	1 Blue Flag
	30 Seconds	3 Short	
	20 Seconds	2 Short	
	10 Seconds	1 Short	
	5 Seconds	1 Short	
	4 Seconds	1 Short	
	3 Seconds	1 Short	
	2 Seconds	1 Short	
	1 Second	1 Short	
Start	0 Seconds	1 Long	All Blue Flags Lowered

11.1.1. Signals shall be timed from the beginning of the sound signal.

11.1.2. Failure to hear the signal shall not be grounds for redress. This changes RRS 60.1(b).

11.1.3. Visual indication flags shall be raised and lowered from the start boat to indicate the time before the start. Failure or mistiming of an indication flag shall not be grounds for redress. This changes RRS 60.1(b).

11.2. The starting line is between a staff displaying an orange flag on the signal vessel at the starboard end and the course side of the port-end starting mark.

11.3. [DP] [NP] Boats whose warning signal has not been made shall avoid the starting area during the starting sequence for other races.

11.4. If any part of a boat's hull is on the course side of the starting line at her starting signal and she is identified, the race committee will attempt to hail her sail number. Failure to hail her number, failure of her to hear such a hail, or the order in which boats are hailed will not be grounds for a redress for request. This changes RRS 62.1(a).

11.5. A boat that does not start within two minutes after her starting signal will be scored Did Not Start without a hearing. This changes RRS D3.

12. CHANGE OF THE NEXT LEG OF THE COURSE

12.1. The race committee may move marks of the course. RRS Rule 33 (changing the next leg of the course) will not apply.

13. THE FINISH

13.1. The finishing line is between a staff displaying a blue flag on the finishing vessel at the starboard end and the course side of the port end finishing mark.

14. TIME LIMITS

14.1. Boats not finishing within 5 minutes of the first boat shall be scored DNF without a hearing. This changes RRS 35 and D3.

15. HEARING REQUESTS

15.1. Boats intending to protest or seek redress other than under RRS D2.2(a) shall notify the race committee or the umpires of that intent immediately on completion of that race including the type of redress being sought.

16. SCORING & FORMAT OF RACING

16.1. Racing shall be in a round robin format. Due to the number of entries teams will be seeded into two pools (Pool A & Pool B) based on RQYS School Teams Racing Term 1.

16.1.1. Teams Shall be seeded as follows:

Term 1 Results	Pool (A or B)
1 st	Pool A
2 nd	Pool B
3 rd	Pool B
4 th	Pool A
5 th	Pool A
6 th	Pool B
Etc.	

16.2. Pool A & Pool B Races will be run alternately e.g. Pool A Race 1, Pool B Race 1, Pool A Race 2, Pool B Race 2, etc.

16.3. On day 2 a “finals round” is scheduled which will be made up of the top 2 teams from each pool based on scores from ALL rounds with more than 80% of the schedule races completed.

16.3.1. The tentative format would be:

Finals (Seeded: Pool A 1st V Pool B 2nd & Pool A 2nd V Pool B 1st)

Petite Finals (Determines overall 3rd & 4th) – Seeded from Runner-ups from Finals

Grand Finals (Determines overall 1st & 2nd) – Seeded from Winners of Finals

16.3.2. All finals races shall be best of 3 races (first to two wins).

16.4. Scoring shall be as per RRS Appendix D.

16.5. The Organising Authority reserves the right to alter the format at any time.

17. [DP] [NP] SAFETY REGULATIONS

17.1. Competitors shall comply with the following requirements within and in the vicinity of Manly Boat Harbour:

17.1.1. All boats shall keep to the right side of the channel when entering and exiting Manly Harbour.

17.1.2. Once outside the Manly Boat Harbour, competitors are to, as soon as possible, stay outside of the main channel, keeping clear of powered vessels.

18. EQUIPMENT AND MEASUREMENT CHECKS

18.1. A boat or equipment may be inspected at any time for compliance with the class rules, notice of race and sailing instructions.

19. OFFICIAL VESSELS

19.1. Official vessels will be identified by displaying a white flag or sticker with black letters 'RC' or 'J' or white flag with red letters 'MEDIA'.

20. [DP][NP] SUPPORT TEAMS

20.1. No support or coach boats are allowed within 50 metres of the course, unless asked to assist by the race officer. The penalty for failing to comply with this requirement shall be at the discretion of the Jury and may result in the disqualification of all boats associated with the offending coach boat.

20.2. In the event of extreme conditions, all Patrol and Support boats are to follow the requests of the Race Committee on VHF Channel 77.

- 20.3. Speed around the course shall be kept to a minimum with the boats engine to be in NEUTRAL when around sailors/people in the water.
- 20.4. Maximum speed whilst in the Harbour shall be 6 knots except in emergency situations.
- 20.5. In the case of a medical emergency, the vessel offering the First Aid, shall report the details to the Sailing Office on VHF Channel 77 "RQ77" and proceed to the "Fuel Pontoon" where RQYS Staff shall be on hand to assist.
- 20.6. Support Vessels may not be launched from the "Main RQYS Ramp" or Ramp 4 (across the road from the look out) while competitors are launching / retrieving.
 - 20.6.1. The Organising Authority may restrict ramp access further.
 - 20.6.2. Alternative ramps include the marina yard ramp (when open) or the public ramp adjacent to the club.

21. TRASH DISPOSAL

- 21.1. Trash may be placed aboard official or support person vessels.

22. BERTHING

- 22.1. [DP][NP] The Organising Authority may restrict the areas in which vessels may rig/de-rig and launch.

23. PRIZES

- 23.1. Prizes will be given as follows:
 - 23.1.1. South East Queensland School Team Sailing Championship Winning Team - The Norman Sherwood Perpetual Trophy
 - 23.1.2. Medallions for 1st, 2nd and 3rd for each competitor in the team and one (1) trophy for the school.
- 23.2. Prizes will be distributed at the discretion of the organising authority and may vary depending on the number of entries.

24. RISK STATEMENT

- 24.1. RRS 3 states: 'The responsibility for a boat's decision to participate in a race or to continue to race is hers alone.' By participating in this event each competitor agrees and acknowledges that sailing is a potentially dangerous activity with inherent risks. These risks include strong winds and rough seas, sudden changes in weather, failure of equipment, boat handling errors, poor seamanship by other boats, loss of balance on an unstable platform and fatigue resulting in increased risk of injury. **Inherent in the sport of sailing is the risk of permanent, catastrophic injury or death by drowning, trauma, hypothermia or other causes.**
- 24.2. All participants are required to comply with any safety provisions as mandated under the Racing Rules of Sailing, the Australian Sailing Special Regulations Part 2 for Off The Beach Boats, and any Class Rules that may apply. The Squadron encourages and supports competitors who believe it is appropriate to exceed the above requirements (such as the wearing of helmets, body armor, impact vests, etc.) if they or their guardian believe that conditions and their personal circumstances warrant. All competitor's attention is drawn to the Risk Statement - Section 23 of the Sailing Instructions.

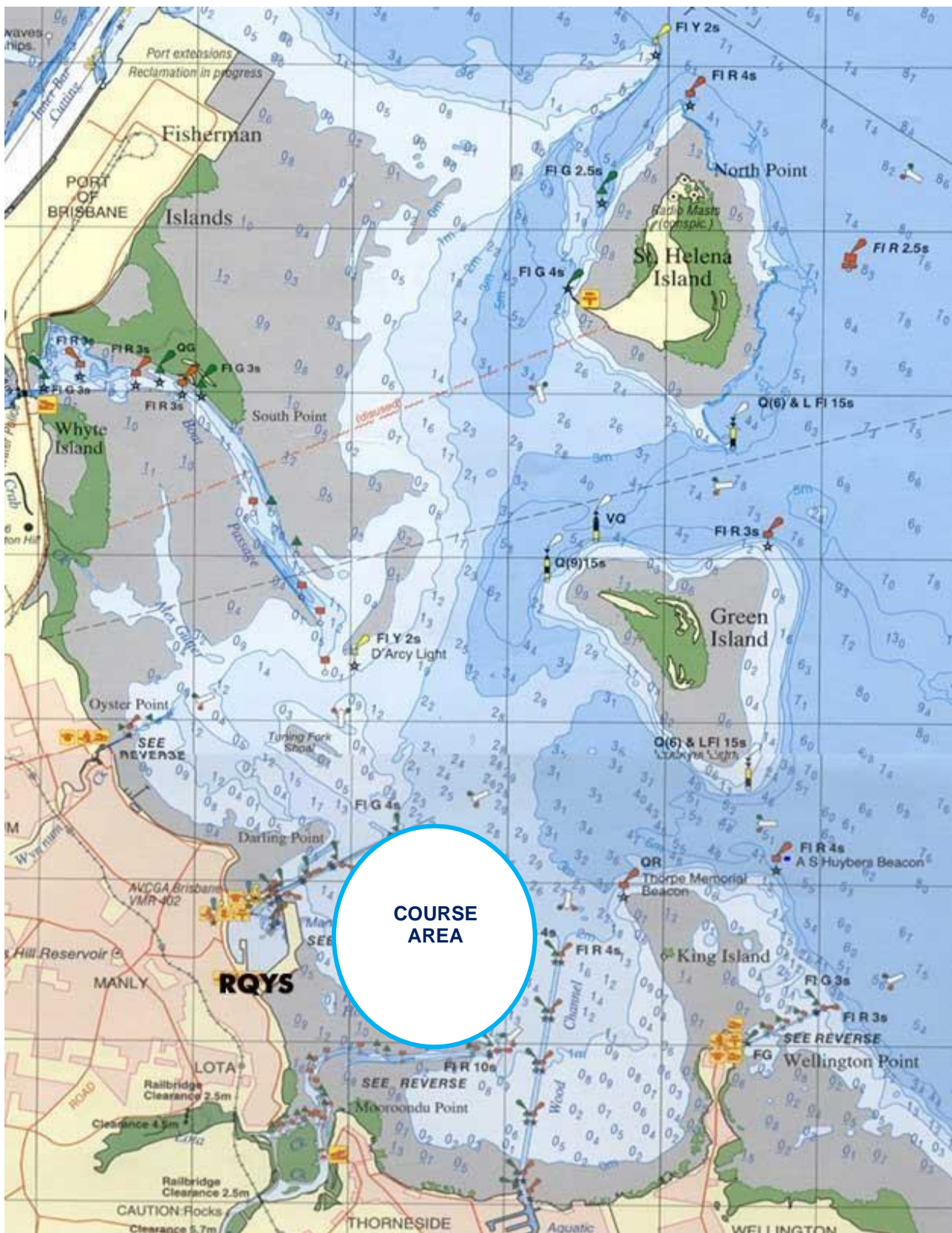
25. INSURANCE

- 25.1. Each participating boat shall be insured with valid third-party liability insurance with a minimum cover of \$10,000,000AUD per incident or the equivalent.

26. FURTHER INFORMATION

- 26.1. For further information please contact:
RQYS Sailing: 07 3396 8666 / sailing@rqys.com.au
578 Royal Esplanade MANLY QLD 4179 AUS
www.rqys.com.au

SI ATTACHMENT A



SI ATTACHMENT B

COURSE	MARKS DESCRIPTION
Start – 1 – 2 – 3 – 4 – Finish	Mark 1, 2, 3 & 4 Pink Flag on float
	Start/Finish Pin Orange Flag with Black Stripe on float.

