



International OK Dinghy National Championship

Sunday 18 – Wednesday 21 February
2024

SAILING INSTRUCTIONS (SI)

Including Amendment 1

Organising Authority
ROYAL QUEENSLAND YACHT SQUADRON LTD
578 Royal Esplanade, Manly, QLD 4179



The notation '[NP]' in a rule of the sailing instructions (SIs) means that a boat may not protest another boat for breaking that rule. This changes RRS 60.1(a).

The notation '[DP]' in a rule of the sailing instructions (SI's) means that a protest committee can award a penalty less than disqualification (including no penalty) at their discretion. This changes Rule 64.2

Notation '[SP]' in a rule means a standard penalty may be applied by the race committee without a hearing. This changes RRS 63.1 and A5.

1. RULES

- 1.1. The event is governed by the rules as defined in The Racing Rules of Sailing.
- 1.2. The OKDIA Major Championship Event Manual will apply, unless changed by the Notice of Race or by the Sailing Instructions, with the approval of OKDIA.
- 1.3. 13.2 of the OKDIA Event Manual is amended to read 'Racing may be abandoned if the wind drops below 4 knots for more than 5 minutes'.
- 1.4. RRS Appendix P as amended by SI 15 will apply.
- 1.5. RRS 40.1 shall apply at all times while afloat.
- 1.6. [NP] [DP] Competitors and support persons shall comply with any reasonable request from an event official.
- 1.7. [NP] [DP] Bow numbers will be applied to the port and starboard sides of the bow prior to the first warning, in accordance with Technical Instruction No.1 (which will be displayed on the Official Notice Board), bow numbers shall be supplied by the OA.
- 1.8. If there is a conflict between languages the English text takes precedence.
- 1.9. Where there is a difference between the Notice of Race (NoR) and the Sailing Instructions (SI) the SI take precedence.
- 1.10. Competitors must follow Club Policies (<https://www.rqys.com.au/policiesanddocuments/>)

2. CHANGES TO SAILING INSTRUCTIONS

- 2.1. Any change to the sailing instructions will be posted before 0900 on the day it will take effect, except that any change to the schedule of races will be posted by 2000 on the day before it will take effect.

3. COMMUNICATIONS WITH COMPETITORS

- 3.1. Notices to competitors will be posted on the official notice board located at <https://www.rqys.com.au/sailingnoticeboard/> .
- 3.2. The race office is located at The RQYS Sailing Office located adjacent to the Main Rigging Lawn, telephone 3396 8666, email sailing@rqys.com.au .
- 3.3. [DP] While racing, except in an emergency, a boat shall not make voice or data transmissions and shall not receive voice or data communication that is not available to all boats.

4. [DP][NP]CODE OF CONDUCT

- 4.1. Competitors and support vessels shall comply with reasonable requests from race officials.
- 4.2. Competitors and support persons shall handle any boats or equipment provided by the organizing authority with proper care and seamanship, and in compliance with any written instructions.

5. SIGNALS MADE ASHORE

- 5.1. Signals made ashore will be displayed at the official flag pole located at the top of the Eastern Gangway of the Bill Kirby Docks.
- 5.2. When flag AP is displayed ashore, '1 minute' is replaced with 'not less than 45 minutes' in Race Signals AP.

6. SCHEDULE OF RACES

6.1.

Date	Event	Time	Location
Sunday 18 th February	Registration	12:00 – 16:00	RQYS Girdis Room
	Measurement	10:00 – 16:00	Youth Squad Training Shed
	Welcome Dinner	17:00	RQYS Function Room
Monday 19 th February	Skipper Briefing	10:00	RQYS
	Racing	See C1.5	Waterloo Bay
Tuesday 20 th February	AGM	09:00	RQYS Auditorium
	Racing	See C1.5	Waterloo Bay
Wednesday 21 st February	Racing	See C1.5	Waterloo Bay
	Presentation	18:00	RQYS Function Room

6.2. Three races are scheduled for each day of racing.

6.3. An additional race may be scheduled on any day to enable the full number of scheduled races to be sailed. A maximum of four races per day will be sailed.

6.4. On the last scheduled day of racing no warning signal will be made after 15:00 hrs.

6.5. To alert boats that a race or sequence of races will begin soon, the orange starting line flag will be displayed with one sound at least five minutes before a warning signal is made.

7. CLASS FLAGS

7.1. The Class Flag will be the class insignia on a white background displayed over the flags of the colour of the group(s) affected.

8. RACING AREA

8.1 SI Attachment A shows the location of the racing area.

9. COURSES

9.1. The diagram in SI Attachment B shows the courses, including the approximate angles between legs, the order in which marks are to be passed, and the side on which each mark is to be left.

9.2. No later than the warning signal, the race committee signal vessel will display the course to be sailed and the approximate compass bearing of the first leg.

10. FORMAT OF RACING

10.1. The championship will consist of an Opening Series of up to six races and a Final Series of up to three races as defined in SI Attachment C. The Final Series shall only take place once at least three Opening Series races have been completed.

11. MARKS

11.1. Marks are as described in SI Attachment B.

11.2. If one of the gate marks is missing then the remaining mark shall be left to port.

12. THE START

12.1. The starting line is between a staff displaying an orange flag on the signal vessel at the starboard end and a staff displaying an orange flag on the port-end vessel.

12.2. A boat that does not start within four (4) minutes after her starting signal will be scored Did Not Start without a hearing. This changes RRS A5.1 and A5.2.

- 12.3. [NP] [DP] Boats whose warning signal has not been made shall avoid the starting area during the starting sequence for other races.

13. CHANGE OF THE NEXT LEG OF THE COURSE

- 13.1. Courses will not be shortened. This changes RRS 32. The length and direction of legs of the course may be changed in accordance with RRS 33.
- 13.2. To change the next leg of the course, the race committee will lay a new mark (or move the finishing line) and remove the original mark as soon as practicable. When in a subsequent change a new mark is replaced, it will be replaced by an original mark.
- 13.3. If mark 1 is changed mark 1a shall be ignored.

14. THE FINISH

- 14.1. The finishing line is between staffs displaying blue flags on the finishing vessel at the port end and starboard vessel.

15. PENALTY SYSTEM

- 15.1. A National Jury has been appointed by Australian Sailing.
- 15.2. Decisions of the Jury will be final as provided in RRS 70.5.
- 15.3. RRS Appendix P2.2 is changed to "When a boat is penalised a second or subsequent time during the event she shall immediately retire. If she fails to do so she shall be disqualified without a hearing and her score shall not be excluded". P2.3 is deleted for this event.

16. TIME LIMITS AND TARGET TIMES

- 16.1. Time Limits:
 Start – Mark 1 = 30 minutes
 Start – Finish = 90 minutes
 If no boat has rounded the specified mark with that mark's time limit the race will be abandoned.
- 16.2. Target Time: 60 minutes.
- 16.3. Failure to meet the target time will not be grounds for redress. This changes Rule 62.1(a).
- 16.4. The Finishing Window is 15 minutes after the first boat sails the course and finishes. The race committee will signal the closure of the finishing line for a specific fleet by making one sound signal and lowering the flags for the relevant colour groups on the starboard end finishing vessel.
- 16.5. Boats failing to finish within the Finishing Window, and not subsequently retiring, penalized or given redress, will be scored Did Not Finish (DNF) without a hearing (this changes RRS 35 & A5.1).

17. HEARING REQUESTS

- 17.1. The protest time limit is 90 minutes after the last boat finishes the last race of the day or the race committee signals no more racing today, whichever is later. The time will be posted on the official notice board.
- 17.2. Hearing request forms are available from the race office at the RQYS Sailing Office or <https://www.rqys.com.au/regatta-club-racing-documents-auditors/>
- 17.3. Notices will be posted no later than 30 minutes after the protest time limit to inform competitors of hearings in which they are parties or named as witnesses. Hearings will be held at a time and place advised on the hearing notice.
- 17.4. A list of boats that have been penalized for breaking RRS 42 under Appendix P will be posted.

18. SCORING

- 18.1. One race is required to be completed to constitute a series.
- 18.2. The number of races to count will be as follows:
 - 18.2.1. When five or fewer races have been completed, a boat's series score will be the total of her race scores.
 - 18.2.2. When from six to nine races have been completed a boat's series score will be the total of her race scores excluding her worst score.
- 18.3. All division prizes will be awarded based on the ranking of competitors in the overall results.

19. SAFETY REGULATIONS [DP][NP]

- 19.1. Sign On and Sign Off shall be via the Wrist Band Sign On/Off board located near the RQYS Sailing Office.
 - 19.1.1. A wrist band hung on the board signals a boat is "Signed On", a wrist band not hung on a competitor's hook signals a boat is "Signed Off".
 - 19.1.2. All skippers shall Sign On before racing each day and Sign Off at the earliest possible time after the completion of racing (but not later than the end of protest time). The skipper of a boat that retires or does not intend to continue racing is required to Sign Off immediately on return to shore.
- 19.2. A boat that retires from a race shall notify the race committee as soon as possible.
- 19.3. Competitors shall comply with the following harbour bylaws:
 - 19.3.1. All competing boats and support vessels are not to impede power driven vessels traversing Manly Boat Harbour and associated channels.
 - 19.3.2. Competitors are to stay outside of the main channel as soon as possible, keeping clear of powered vessels.
 - 19.3.3. All competing boats and support vessels are to obey the gazetted speed limit in Manly Boat Harbour (6 knots).
- 19.4. [SP] Failure to Sign On shall result in that boat being penalised three (3) points for the first race of the session (but not worse than DNF). Failure to Sign Off shall result in that boat being penalised three (3) points for the last race of the session (but not worse than DNF). Penalties will be applied without a hearing. This changes RRS 63.1 and A5.

20. REPLACEMENT OF CREW OR EQUIPMENT [DP]

- 20.1. Substitution of competitors is not allowed.
- 20.2. Substitution of damaged or lost equipment is not allowed unless authorized in writing by the Race Committee. Requests for substitution shall be made to the committee at the first reasonable opportunity, which may be after the race.

21. EQUIPMENT AND MEASUREMENT CHECKS

- 21.1. All competitors will be required to present a valid measurement certificate at registration.
- 21.2. A boat or equipment may be inspected at any time for compliance with the class rules, notice of race and sailing instructions.
- 21.3. [DP][NP] When instructed by a race official on the water, a boat shall proceed to a designated area for inspection.

22. OFFICIAL VESSELS

- 22.1. Official vessels will be identified by displaying:
 - 22.1.1. Race Committee: A white flag with black letter 'RC'.
 - 22.1.2. Jury/Judges: A white flag with black letter 'J'.
 - 22.1.3. Media: A white flag with red letters 'MEDIA'.
 - 22.1.4. Technical Committee: A white flag with black letters "TC".

23. [DP][NP] SUPPORT TEAMS

- 23.1. All external powerboats coaching/supporting competitors for this event shall register with the Organising Authority, the RQYS Sailing Office, prior to the commencement of racing. Registration entitles boats to a range of benefits including launching facilities, overnight berthing, refuelling facilities and access to race course outside of 50m of any competitor or mark between start signal and finish of last boat, except when asked to assist by the Race Committee.
- 23.2. Registration for Support boat can be done on the [online portal](#) OR at the RQYS Sailing Office during Registration. Boats that do not have an identifying sticker shall pay \$10.00 to receive an identifying sticker.
- 23.3. Support and spectator boats that do not register will not be permitted to launch or retrieve from RQYS premises, or berth there overnight; the Organising Authority reserves the right to remove such vessels from their premises.
- 23.4. All support/coach boats must have capability of communicating on VHF channel 72, 77 and 16 for the duration of the regatta.

24. TRASH DISPOSAL

- 24.1. Trash may be placed aboard official or support person vessels.

25. BERTHING [NP][DP]

- 25.1. Vessels must be stored and rigged in there designated area, denoted by matching bow number & line marking.
- 25.2. No tie down restraints may penetrate the ground deeper than 300mm due to lawn irrigation systems.

26. PRIZES

- 26.1. Prizes will be awarded to 1st, 2nd and 3rd overall.
- 26.2. The International OK Dinghy Association of Australia Perpetual Trophy and the title of Australian Champion will be awarded to the highest placed Australian competitor.
- 26.3. Other prizes may be awarded at the discretion of the Organising Authority. These may include but are not limited to Veteran's (40 - 54), Masters (55 - 69), Grand Master (70+), Women's, Junior (under 23), Handicap.

27. [DP][NP] IDENTIFICATION, ADVERTISING, CAMERAS and ELECTRONIC EQUIPMENT

- 27.1. When provided by the organizing authority, boats or crew shall carry, display or wear the following as instructed.

27.1.1. Bow numbers.

27.1.2. Event sponsor advertising.

~~27.2. Booms shall display no advertisement, other than supplied by or approved in writing by the organising authority.~~

- 27.3. When provided by the organising authority, boats shall carry the following electronic equipment as instructed:

27.3.1. Cameras,

27.3.2. Sound equipment, and

27.3.3. Position tracking equipment.



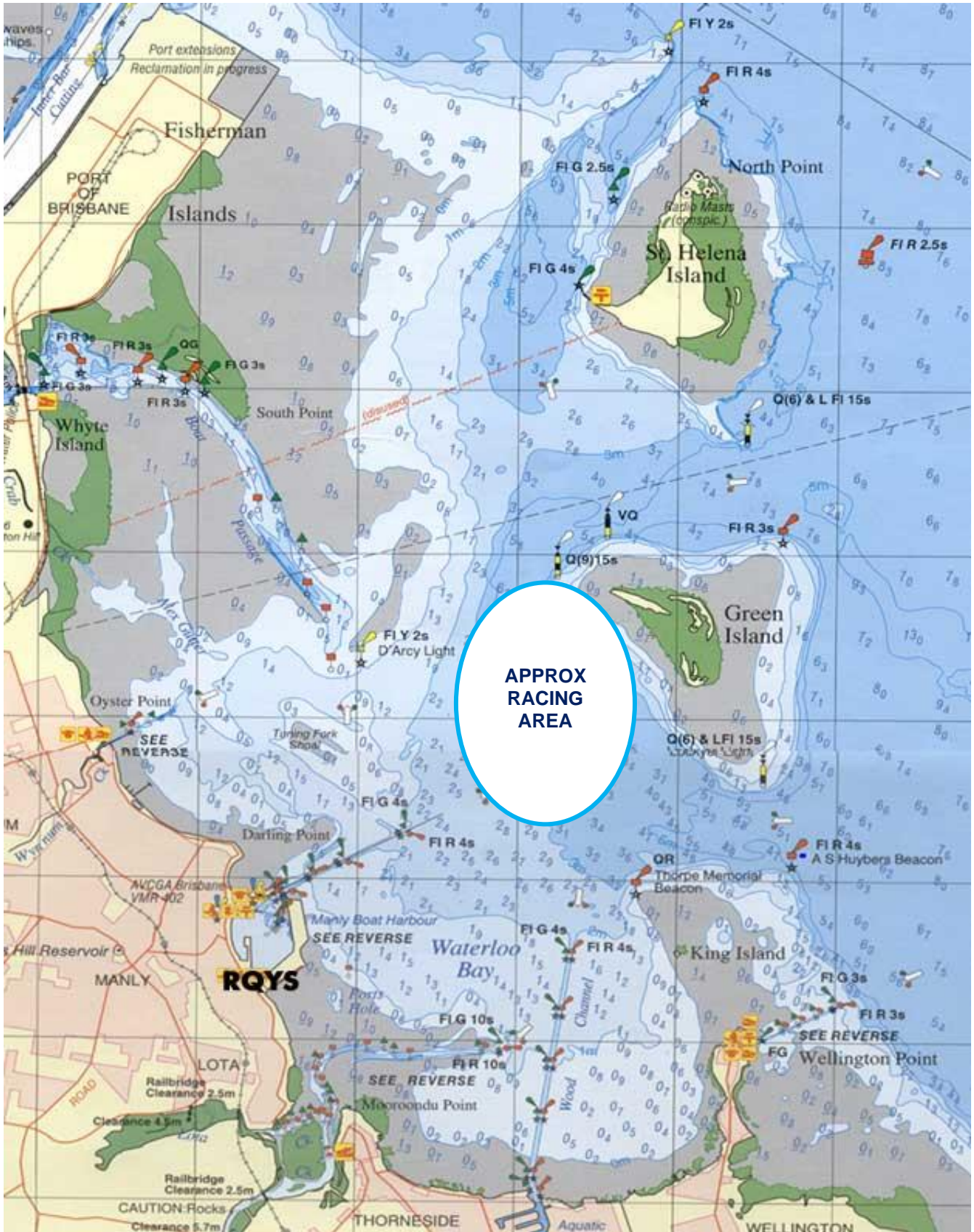
28. RISK STATEMENT

- 28.1. RRS 3 states: 'The responsibility for a boat's decision to participate in a race or to continue to race is hers alone.' By participating in this event each competitor agrees and acknowledges that sailing is a potentially dangerous activity with inherent risks. These risks include strong winds and rough seas, sudden changes in weather, failure of equipment, boat handling errors, poor seamanship by other boats, loss of balance on an unstable platform and fatigue resulting in increased risk of injury. Inherent in the sport of sailing is the risk of permanent, catastrophic injury or death by drowning, trauma, hypothermia or other causes.
- 28.2. All participants are required to comply with any safety provisions as mandated under the Racing Rules of Sailing, the Australian Sailing Special Regulations Part 2 for Off The Beach Boats, and any Class Rules that may apply. The Squadron encourages and supports competitors who believe it is appropriate to exceed the above requirements (such as the wearing of helmets, body armor, impact vests, etc.) if they or their guardian believe that conditions and their personal circumstances warrant. All competitor's attention is drawn to the Risk Statement - Section 18 of the Notice of Race & 28 of the Sailing Instructions.

29. INSURANCE

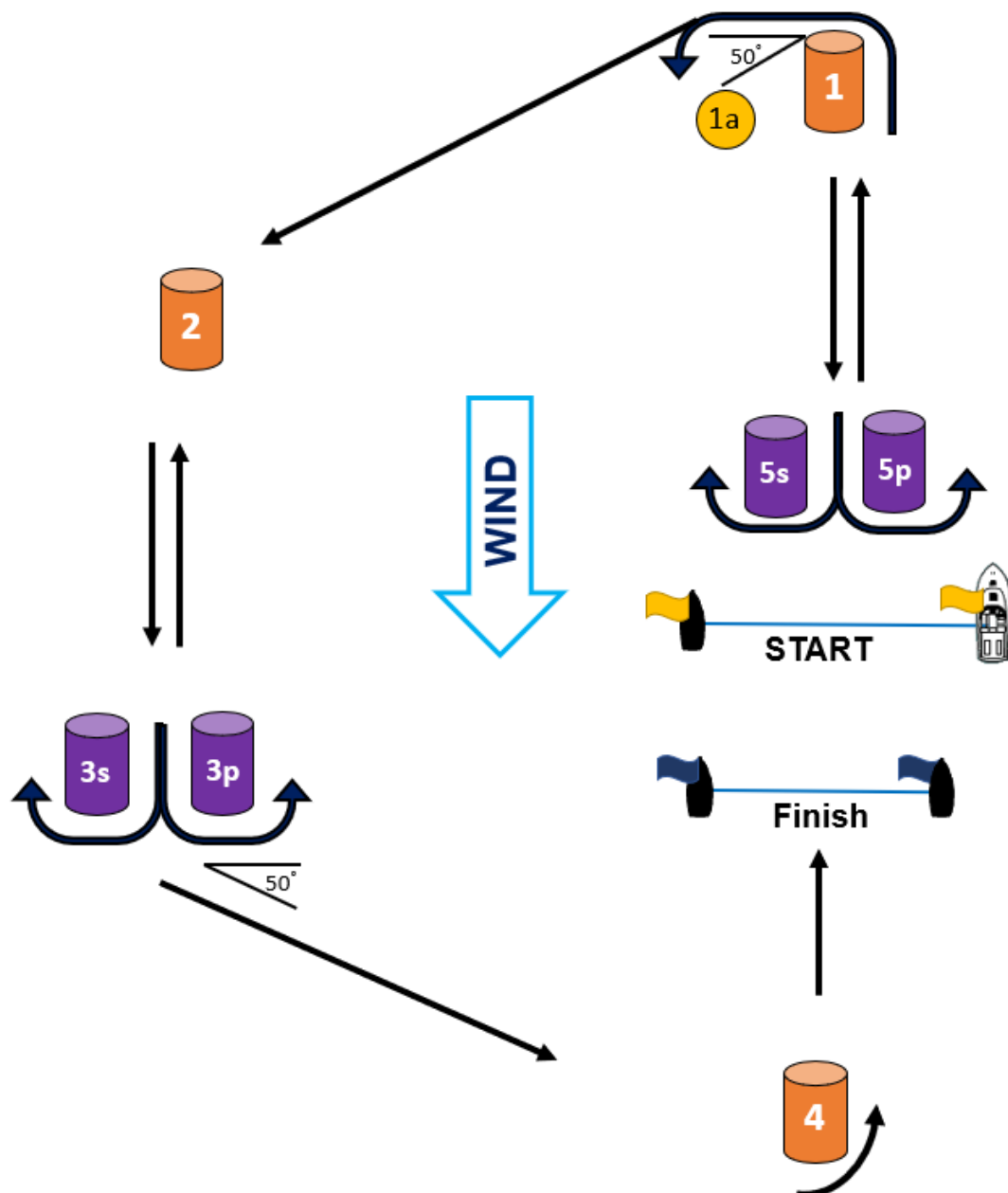
- 29.1. Each participating boat shall be insured with valid third-party liability insurance with a minimum cover of \$5,000,000AUD per incident or the equivalent.

SI ATTACHMENT A – Course Area



SI ATTACHMENT B – Course

CODE	COURSE	MARKS DESCRIPTION
O2	Start – 1 – 1a – 2 – 3s/3p – 2 – 3p – 4 – Finish	Marks 1, 2 & 4: Orange Inflatables'
I2	Start – 1 – 1a – 5s/5p – 1 – 1a – 2 – 3p – 4 – Finish	Mark 1a: Orange teardrop
The course diagram is only approximate, is not to scale & does not override any other instruction.		Mark 3s/3p & 5s/5p: Purple Inflatables'
		Start Pin: RIB Displaying Orange Flag Finish Pin: RIB Displaying Blue Flag
		Change Marks: Mark 1 & 2: Yellow Inflatables'



SI ATTACHMENT C – Split Fleets

- C1.1 Boats will be assigned to one of four Groups of, as nearly as possible, equal size. The Groups are designated Yellow, Blue, Orange and Purple. [DP] Boats shall display a coloured tape appropriate to the group to which they are assigned. This will be applied above the gooseneck by the organising authority.
- C1.2 [NP] Initial assignments will be based from a skipper's position in the most recently published OKDIA World Ranking List before the first race. Skippers not on the World Ranking List will be added at the end in alphabetical order (by family name). Final allocations will be at the discretion of OKDIA. These assignments will be posted by 21:00 on the day before the first scheduled race for the event.

Assignments will be made as follows:

Ranking	Fleet Assignment
First	Yellow
Second	Orange
Third	Blue
Fourth	Purple
Fifth	Purple
Sixth	Blue
Seventh	Orange
Eighth	Yellow
And so on	

- C1.3 Boats will remain in their assigned colour Group for the duration of the Opening Series. Fleet assignments will be made as per C1.6. For the Final Series, the fleet will be split into Gold and Silver fleets, based on their ranking at the end of the Opening Series.
- C1.4 The coloured tape for Gold/Silver fleets will be Yellow/Blue. [DP] Boats with an incorrect colour will report to the Race Office to arrange the fitting of a replacement coloured tape. Gold and Silver fleets will be same size, except if there are an odd number of boats, or if there is a points tie at the split, the Gold fleet shall be the larger fleet.
- C1.5 The Schedule of races will be:

Date	Race	Waring Signal not Before	Fleets
Monday 19 February	Race 1	12:00 +10 mins	Yellow / Blue Orange / Purple
	Race 2	ASAP +10 mins	Yellow / Orange Blue / Purple
	Eace 3	ASAP +10 mins	Yellow / Purple Blue / Orange

Tuesday 20 February	Race 4	12:00 +10 mins	Orange / Purple Yellow / Blue
	Race 5	ASAP +10 mins	Blue / Purple Yellow / Orange
	Race 6	ASAP +10 mins	Blue / Orange Yellow / Purple
Wednesday 21 February	Race 7	12:00 +10 mins	Gold Silver
	Race 8	ASAP +10 mins	Gold Silver
	Race 9	ASAP +10 mins	Gold Silver

C1.6 Fleet Assignments

- (a) In the Opening Series, if all fleets have not completed the same number of races at the end of a day, the first race the following day will be for the rescheduled fleet, except if the Opening Series has been completed, then C1.7 will apply.
- (b) Assignments for Gold and Silver fleets will be published as soon as possible after the end of the Opening Series when protests or requests for redress have been decided.

C1.7 Scoring

If at the end of the Opening Series, some boats have an additional race score than others, the boats with fewer scores will be awarded average points, after discard, of all completed races to that point, for the race that had not been completed, so that all boats have the same number of race scores. This will only apply if all boats have completed a minimum of four races.