



---

# WAGS 2023/24

First Wednesday in September 2023 to the last Wednesday in  
August 2024

## SAILING INSTRUCTIONS Including Amendment 5

---

### 1. RULES

- 1.1 The regatta will be governed by the rules as defined in the current Racing Rules of Sailing.
- 1.2 All yachts shall comply with AS Special Regulations Part 1 – Category 6.
- 1.3 Where lifelines complying with AS SR Part 1 Section 3 Rule 3.12 have not been fitted, all crew shall wear a visible personal floatation device as per AS SR Part 1 Section 5.
- 1.4 All boats using outboard engines shall comply with AS SR Part 1 Section 3 Rule 3.24.4.
- 1.5 **ALL skippers shall comply with the Transport Operations (Marine Safety) Act 1994 and Regulation. In the event of a reportable Marine incident the RQYS Sailing Office is to be notified as soon as practical; but no later than 1 hour after the incident, a copy of the Marine Incident Report is required to be lodged with the RQYS Sailing Office at the same time it is lodged with Marine Safety Queensland.**
- 1.6 **Boats that make contact with another vessel shall be scored DSQ without a hearing. This changes RRS A5.1.**
- 1.7 RRS Appendix T shall apply.

### 2. ELIGIBILITY AND FEES

- 2.1. WAGS races are open to all Monohull and Multihull Yachts (both trailerable and fixed keel) on the register of a yacht or sailing club affiliated with Australian Sailing (AS). Dinghies are not permitted to sail in WAGS.
- 2.2 Race fee is \$10.00 per race for all boats.
- 2.3 RQYS Members may pay a full series entry fee of \$450.00.
- 2.4 All crew are required to be included in the boats online entry/registration before each race.
- 2.5 Single handed entries are NOT eligible.
- 2.6 Boats may enter the event by registering online at <https://app.sailsys.com.au/club/25/entry/series/2798/pricing>
- 2.7 To be considered an entry in the event, a boat shall complete all registration requirements and pay all fees.
- 2.8 The minimum age for RQYS allocated crew is 17 or above.

**WAGS 2023 - 2024**  
**NOTICE OF RACE & SAILING INSTRUCTIONS**  
The Royal Queensland Yacht Squadron (RQYS)

**3. SAIL RESTRICTIONS**

- 3.1. All boats are to sail with a singular Jib or Genoa, and Mainsail only. Other sail combinations based on a boat's designed rig (e.g. Ketches, Schooners, etc.) are permitted with prior approval by the Race Committee. Loose luffed headsails (e.g. Screecher, Code 0, Spinnakers) are not permitted.
- 3.2. The headsail must be fully hanked, or attached by means of a luff groove device, to the forestay. Spinnaker poles and/or whisker poles are allowed for poling out headsails.
- 3.3. Boats shall use only one mainsail throughout the Race and only one headsail at a time for the duration of the Race.

**4. SCHEDULE OF RACES**

DAY	EVENT	TIME
Each Wednesday at the discretion of the Race Committee	Boat Registration at WAGS table in RQ Bar or online via SailSys (Crew still need to be registered before every race, online on SailSys "Crew List")	Between 1100 and 1225hrs
	Handicaps (Start Times) Announced	1225hrs
	Racing	As per allocated start time
	Presentation in RQ Bar	1700 hrs. on the day of race
<b>WAGS SPECIAL EVENTS</b>		
Race 1: 15 November 2023	THE GEOFF ANDERSON MEMORIAL SUPER SERIES (7 RACES STARTING WITH) The Ross Jullyan Memorial Trophy	
Races 2 - 7 20 December 2023	The first Wednesday each month December 2023 through to May 2024 Christmas WAGS	
14 August 2024	Peter Beard Memorial Trophy WAGS -- Ekka Wednesday	

**5. RACING AREA**

All races will be conducted on Waterloo and Moreton Bays West, East, and South of Green Island.

**6. THE COURSES**

- 6.1 All courses start and finish as per SI 9 and 10.
- 6.2 The courses to be sailed will be as per the course descriptions in SI Attachment A.
- 6.3 The course flag confirming the course to be sailed will be flown from the start boat. In the event that the start boat is not on station, competitors shall monitor Channel VHF 72 for course information.
- 6.4 Courses may be shortened as per RRS 32.
- 6.5 Where a course is to be in the "Reversed" version, the Start Boat Shall display the flag for that course followed by Code flag "R".

**7. MARKS**

- 7.1. When a navigation mark is nominated as a mark of a course it shall be left in the manner described in the course booklet, otherwise all navigation marks shall be observed in the correct manner.
- 7.2. Where a navigation mark is to be rounded due consideration to the weather conditions including tidal effect shall be given.

**WAGS 2023 - 2024**  
**NOTICE OF RACE & SAILING INSTRUCTIONS**  
The Royal Queensland Yacht Squadron (RQYS)

**8. Place Holder**

**9. THE START**

- 9.1. Races will be started as follows:
- 9.1.1. Boats shall start no earlier than their allocated start time. All times are in Brisbane EST time. Syncing of your clock is recommended at <http://www.timeanddate.com/worldclock/fullscreen.html?n=47>
  - 9.1.2. The Race Officer (starter) will usually raise a start bat 10 seconds prior to the minute and lower the start bat on the minute.
  - 9.1.3. A sound signal will be given to any yacht starting early and therefore they are required to restart. This changes RRS 26.
- 9.2. All boats shall keep clear of the start line and not cross in either direction prior to their designated start time.
- 9.3. A boat re-starting because of OCS shall return and re-enter the course via the rounding of the pin or start boat and keep clear of all starting boats. NO DIPPING.
- 9.4. The starting line will be between a staff displaying an orange flag on the start boat at the starboard end and an orange buoy at the port end approximately 300m to 800m from the outer Manly Harbour Leads.
- 9.5. In the case where the start boat is not on station, the start line shall be an extension of the Eastern Port and Starboard Lateral Beacons to the south and within 100m. In these circumstances boats are required to start at their allocated starting time.

**10. THE FINISH**

- 10.1. The finishing line will be between a staff displaying a blue flag on the race committee vessel and an orange buoy at the port end of the line.
- 10.2. When a course is shortened, the race committee will display flag S with 2 sounds and the finish line shall be at a rounding mark and a staff on the finish boat displaying flag S.
- 10.3. When a finish boat is not on station, the finish line shall be an extension of the Eastern Port and Starboard Lateral Beacons to the south and within 100m. Boats are to record and report their own finish times to the Sailing Office.

**11. PENALTY SYSTEM**

- 11.1. For all boats rule 44.1 is changed so that the Two-Turns Penalty is replaced by the One-Turn Penalty.

**12. TIME LIMIT**

- 12.1. The time limit for all boats to be finished is 1600 hours.

**13. PROTESTS**

- 13.1 All WAGS races are intended to that of a **fun and enjoyable nature** and therefore there should be no reason to Protest. Competitors are encouraged to resolve their differences in a respectable manner.
- 13.2 Should an incident occur, that cannot be resolved, competitors are required to lodge a protest with the Sailing Office via an email to [sailing@rqys.com.au](mailto:sailing@rqys.com.au) by 1600 hrs, the day after the relevant Wags race. Protest forms are available at the sailing office and [online](#).

**WAGS 2023 - 2024**  
**NOTICE OF RACE & SAILING INSTRUCTIONS**  
The Royal Queensland Yacht Squadron (RQYS)

#### **14. SCORING AND HANDICAPS**

- 14.1. All Races
- a. Handicap start times will be allocated to each boat upon registration.
  - b. Each race is an individual race and will be scored as such with the exception of races for the Squadron Monohull and Multihull Championship.
- 14.2. Races to determine WAGS Squadron Multihull and Monohull Champions (The Geoff Anderson Memorial Super Series):
- c. A Performance Based Handicap system will be in place for these races.
  - d. The WAGS Squadron Monohull and Multihull Champions will be determined from the results of the following races as per SI 4.
  - e. There will be a drop after the completion of race 3 and 6.
  - f. To qualify for these trophies the skipper/owner must be a Full member or equivalent of RQYS and their yacht registered with RQYS

#### **15. SAFETY REGULATIONS**

- 15.1. All competitors intending to start shall report to the WAGS Table located inside the RQ Bar by no later than 1225 hrs. to register for the day's race or by VHF Channel 72 (having already entered online as per SI2.5) when committee/start boat displays station flag (orange).
- 15.2. A current / Intended POB shall be provided at Sign-On.
- 15.3. A boat that retires from a race shall notify the race committee on VHF Channel 72 as soon as possible.
- 15.4. ~~Unless in use, all anchors must~~
- ~~a. be stowed in an anchor locker or~~
  - ~~b. secured on the deck away from the sheer line.~~
- 15.5. Attention is drawn to SI 19.

#### **16. DIVISIONS**

Signals for divisions shall use the following flags:

MONOHULLS	Numeral Pennant #1
MULTIHULLS	Numeral Pennant #5

#### **17. RADIO COMMUNICATION**

- 17.1. The Race Committee may communicate information to the competing boats during the course of the race. All boats are required to **monitor VHF Channel 72** for the duration of the race.
- 17.2. If the race committee displays code flag L alternate **VHF channel 77** will be used.
- 17.3. Except in an emergency, a boat shall neither make radio transmissions while racing nor receive radio communications not available to all boats. This restriction also applies to mobile telephones.

#### **18. PRIZES**

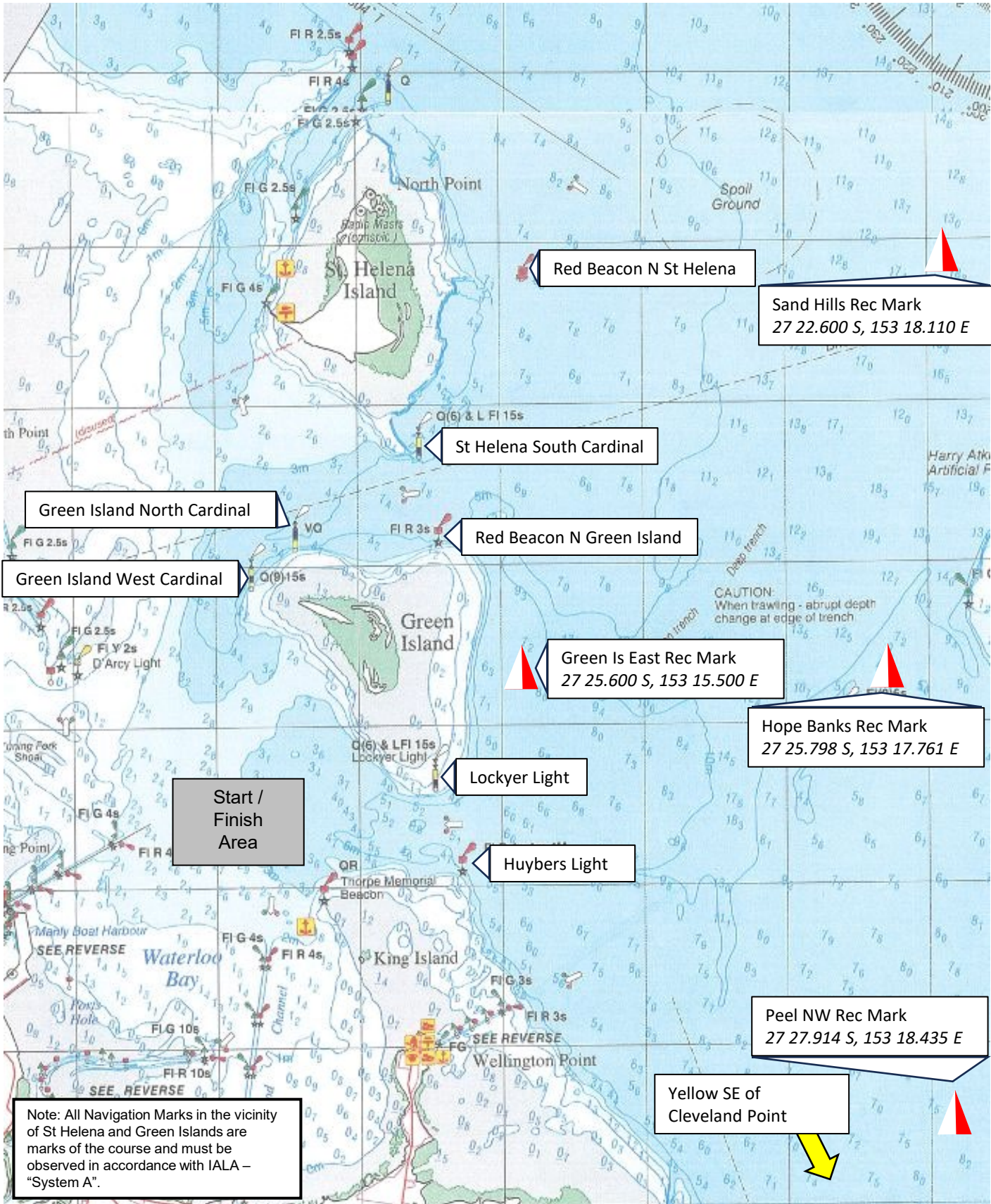
- 18.1. All competitors are eligible for the following awards:
- Monohull – 1st, 2nd, 3rd and 4th over the line
  - Multihull – 1st and 2nd over the line
  - Closest to the line at official starting time
  - A lucky entrance draw (skipper must be present)
  - Other prizes may be awarded at the discretion of the Race Committee
- 18.2. RQYS Entries only are eligible for the following awards:
- Monohull – WAGS Squadron Monohull Champion
  - Multihull – WAGS Squadron Multihull Champion
- 18.3. THE GEOFF ANDERSON MEMORIAL SUPER SERIES Squadron Championship races are the first Wednesday of each month (December –May) and starting with the Ross Jullyan Memorial Trophy in November.
- 18.4. Due to the nature of Handicapping in WAGS no vessel may win on her first race.





# SI Attachment A

## COURSE MARKS



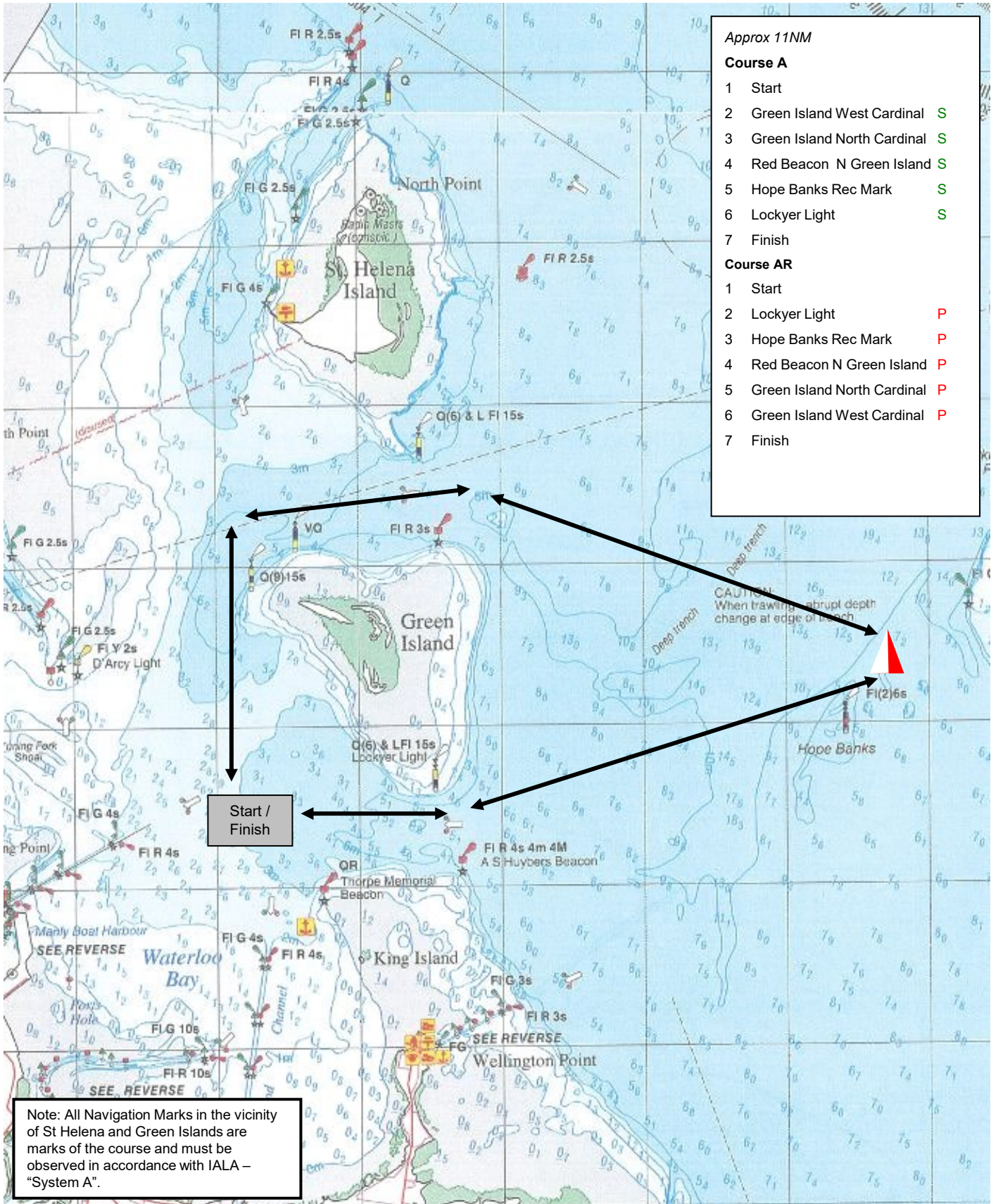
**Note:** charts illustrated in these sailing instructions show the general racing area – **Not for Navigation**



COURSE A



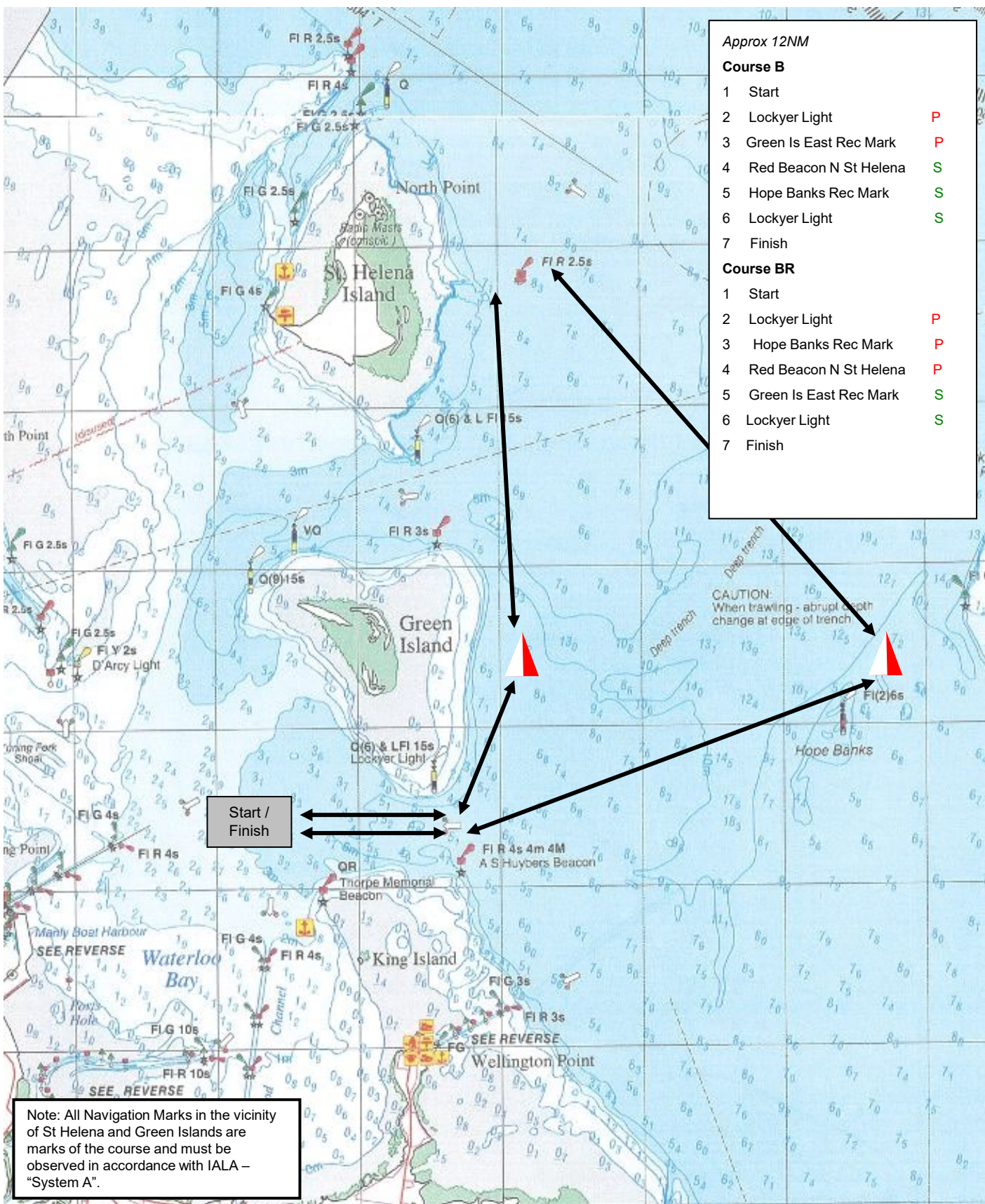
/ COURSE AR



**Note:** charts illustrated in these sailing instructions show the general racing area – **Not for Navigation**



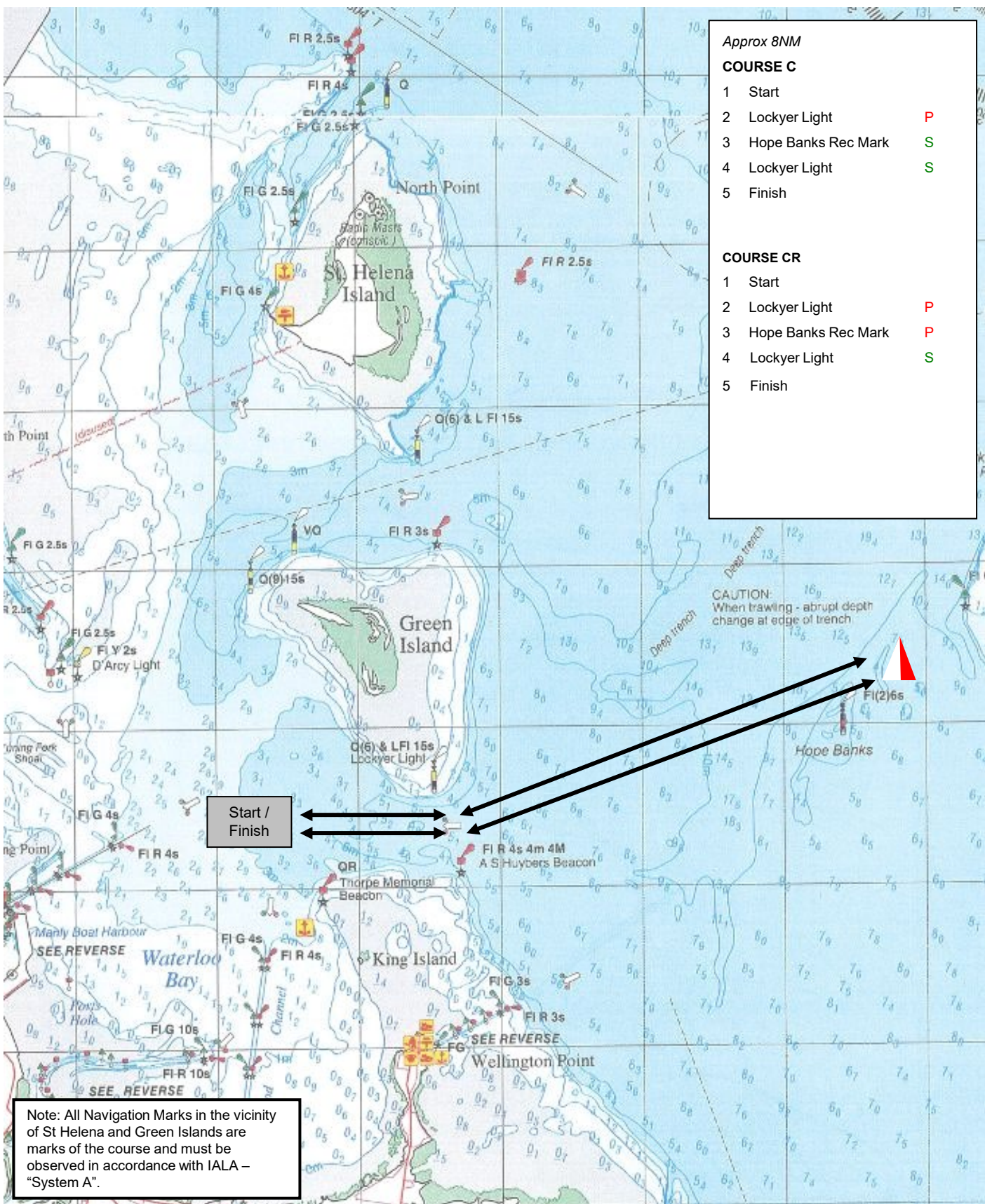
# COURSE B / COURSE BR



**Note:** charts illustrated in these sailing instructions show the general racing area – **Not for Navigation**



# COURSE C / COURSE CR



*Approx 8NM*

COURSE C		
1	Start	
2	Lockyer Light	P
3	Hope Banks Rec Mark	S
4	Lockyer Light	S
5	Finish	

COURSE CR		
1	Start	
2	Lockyer Light	P
3	Hope Banks Rec Mark	P
4	Lockyer Light	S
5	Finish	

Start / Finish

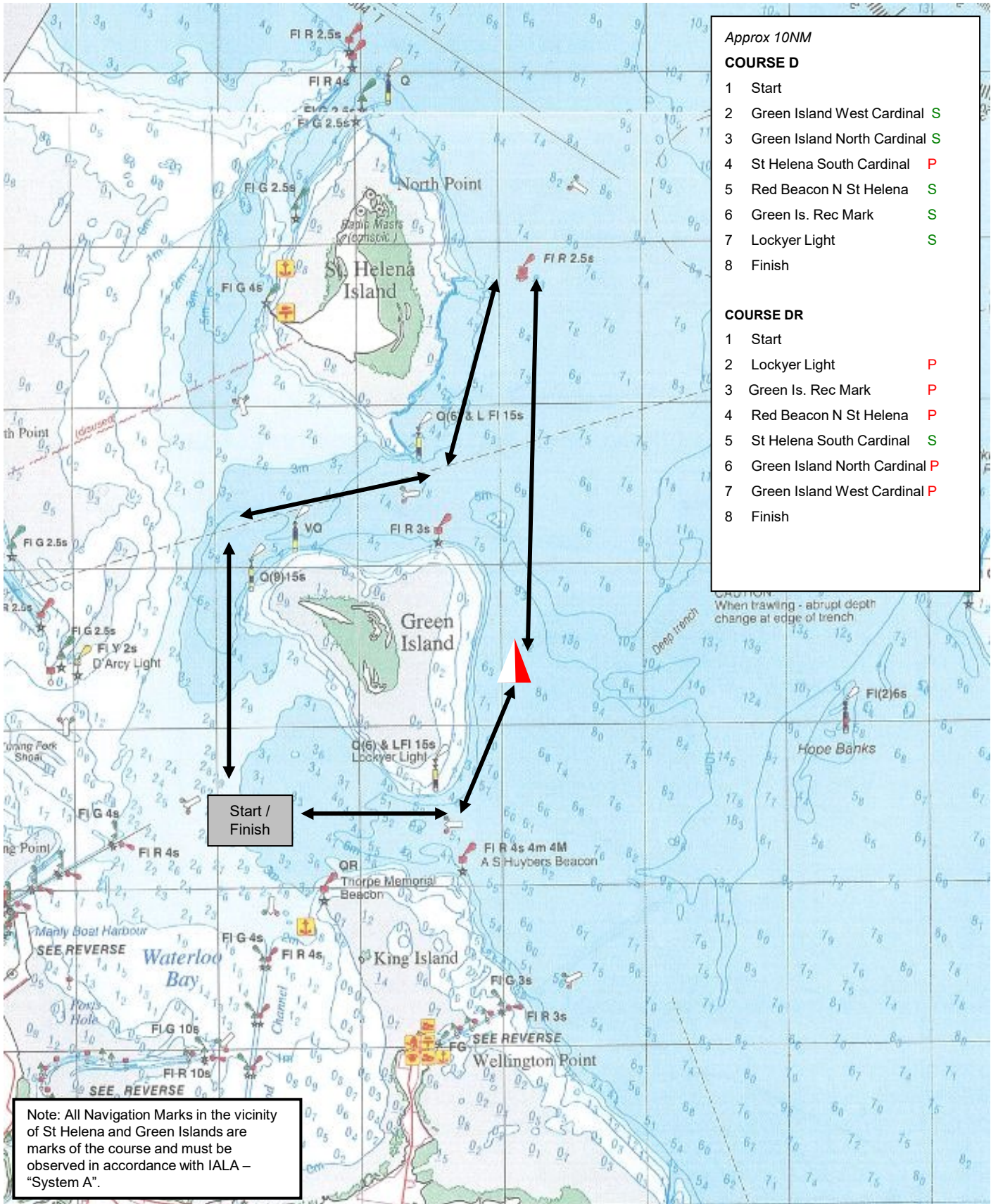
CAUTION:  
When trawling - abrupt depth change at edge of trench

Note: All Navigation Marks in the vicinity of St Helena and Green Islands are marks of the course and must be observed in accordance with IALA – "System A".

**Note:** charts illustrated in these sailing instructions show the general racing area – **Not for Navigation**



COURSE D  / COURSE DR  

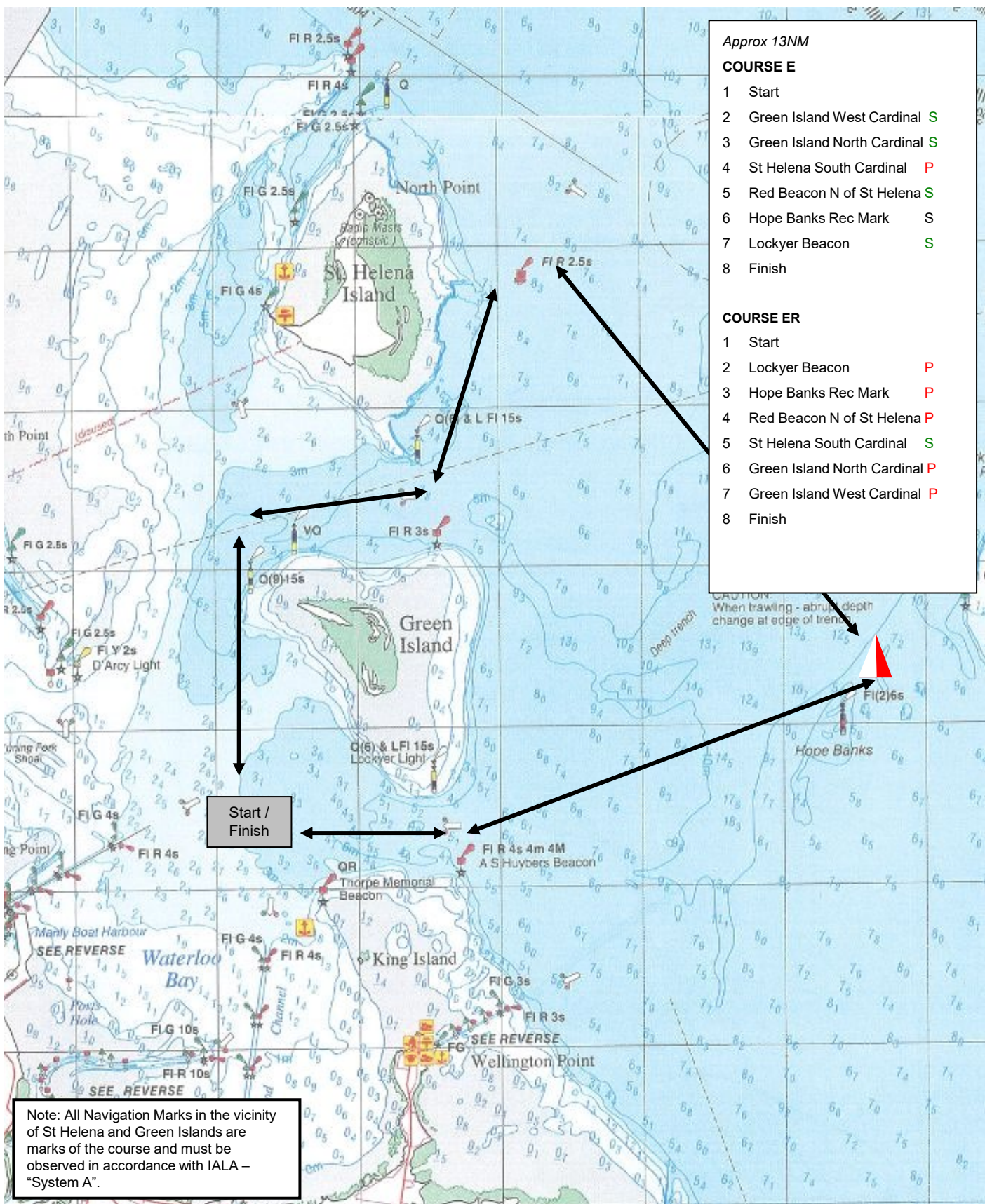


Note: All Navigation Marks in the vicinity of St Helena and Green Islands are marks of the course and must be observed in accordance with IALA – "System A".

**Note:** charts illustrated in these sailing instructions show the general racing area – **Not for Navigation**



COURSE E  / COURSE ER  



- Approx 13NM*
- COURSE E**
- 1 Start
  - 2 Green Island West Cardinal **S**
  - 3 Green Island North Cardinal **S**
  - 4 St Helena South Cardinal **P**
  - 5 Red Beacon N of St Helena **S**
  - 6 Hope Banks Rec Mark **S**
  - 7 Lockyer Beacon **S**
  - 8 Finish
- COURSE ER**
- 1 Start
  - 2 Lockyer Beacon **P**
  - 3 Hope Banks Rec Mark **P**
  - 4 Red Beacon N of St Helena **P**
  - 5 St Helena South Cardinal **S**
  - 6 Green Island North Cardinal **P**
  - 7 Green Island West Cardinal **P**
  - 8 Finish

**Note:** charts illustrated in these sailing instructions show the general racing area – **Not for Navigation**



# COURSE F / COURSE FR

Approx 12NM

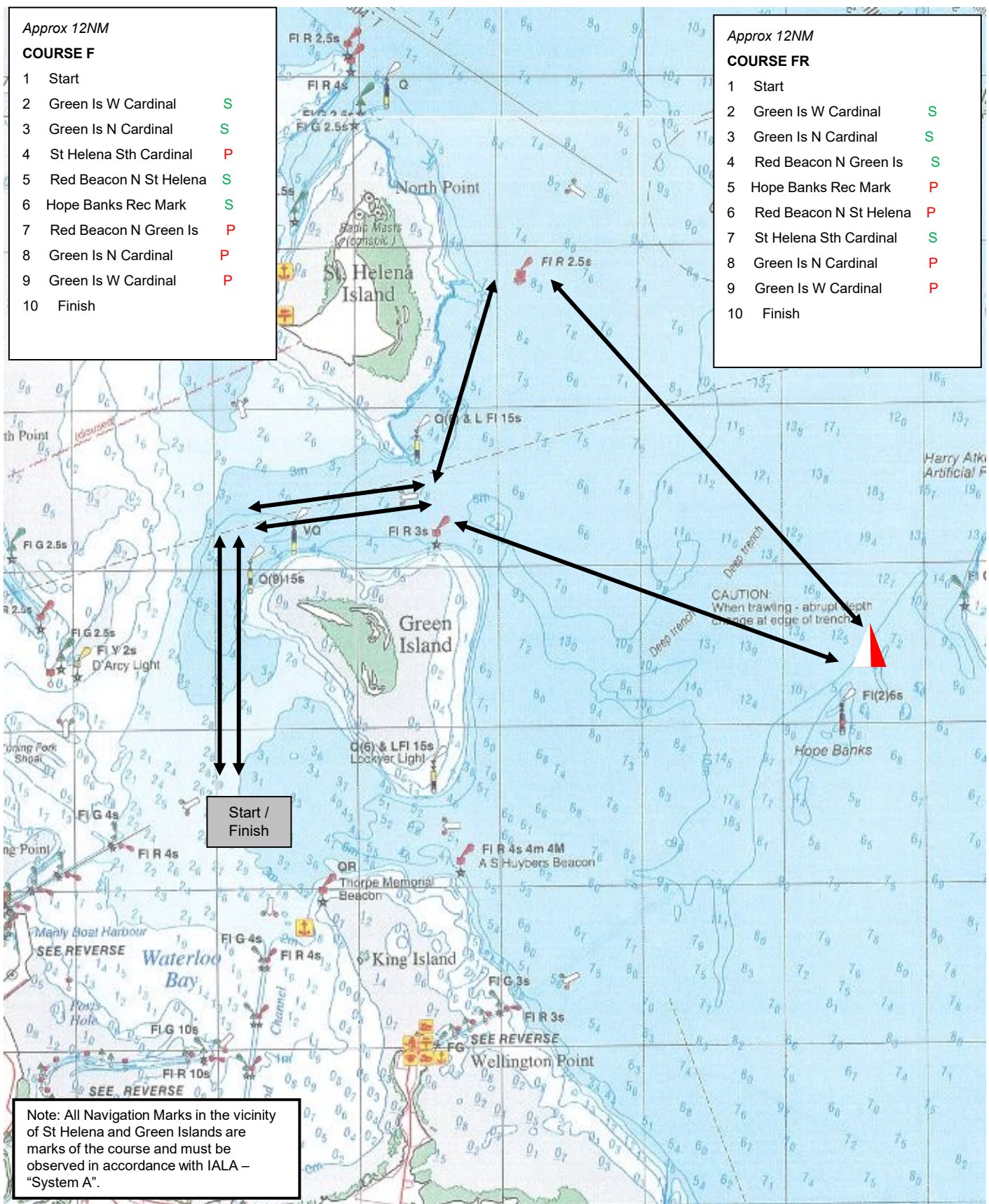
**COURSE F**

1	Start	
2	Green Is W Cardinal	S
3	Green Is N Cardinal	S
4	St Helena Sth Cardinal	P
5	Red Beacon N St Helena	S
6	Hope Banks Rec Mark	S
7	Red Beacon N Green Is	P
8	Green Is N Cardinal	P
9	Green Is W Cardinal	P
10	Finish	

Approx 12NM

**COURSE FR**

1	Start	
2	Green Is W Cardinal	S
3	Green Is N Cardinal	S
4	Red Beacon N Green Is	S
5	Hope Banks Rec Mark	P
6	Red Beacon N St Helena	P
7	St Helena Sth Cardinal	S
8	Green Is N Cardinal	P
9	Green Is W Cardinal	P
10	Finish	



Note: All Navigation Marks in the vicinity of St Helena and Green Islands are marks of the course and must be observed in accordance with IALA – "System A".



# COURSE G



*Approx 13NM*

**COURSE G**

- 1 Start
- 2 Huybers Light S
- 3 Yellow SE of Cleveland Point P
- 4 Huybers Light P
- 5 Finish

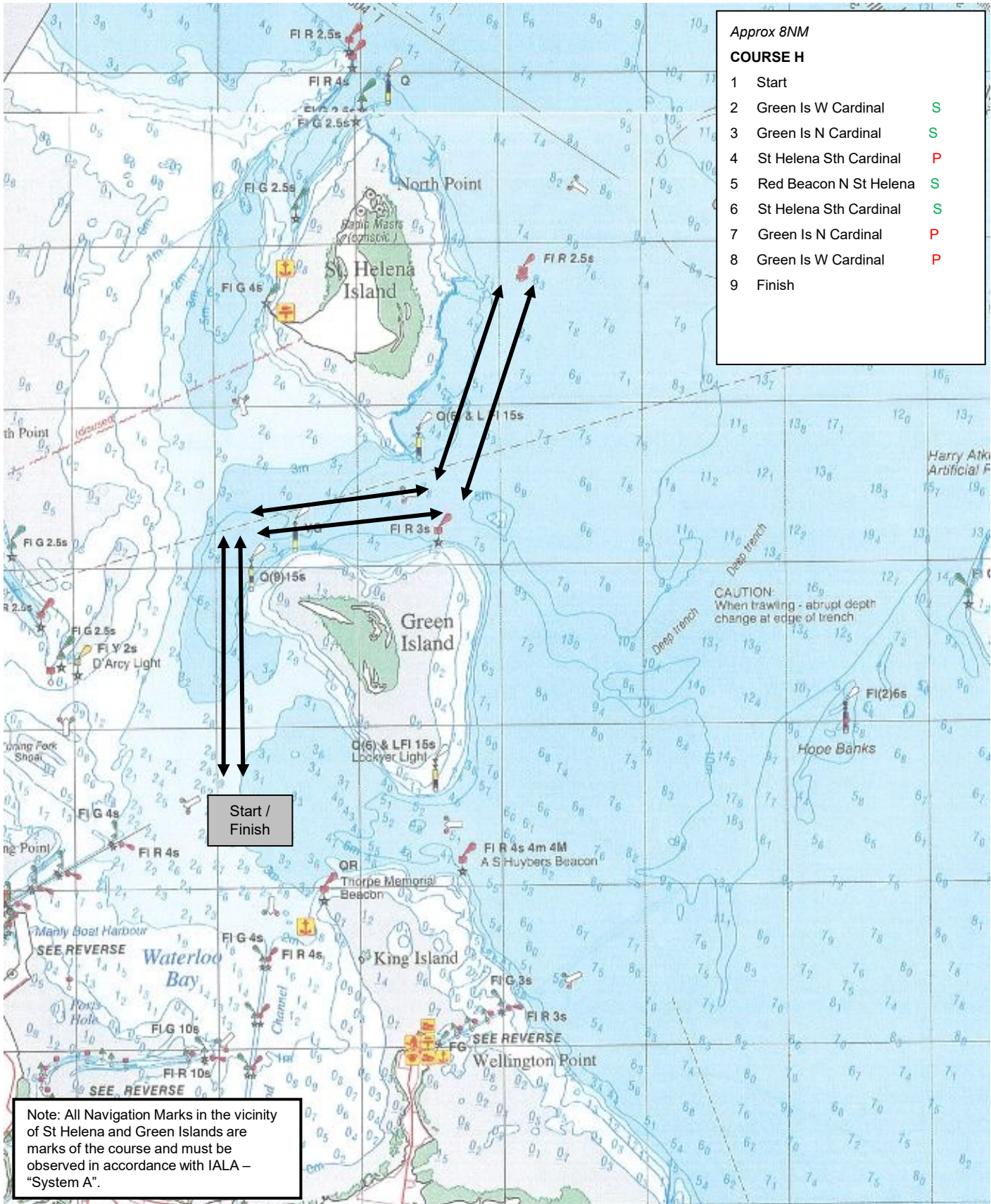
Start /  
Finish

Note: All Navigation Marks in the vicinity of St Helena and Green Islands are marks of the course and must be observed in accordance with IALA – “System A”.

**Note:** charts illustrated in these sailing instructions show the general racing area – **Not for Navigation**



# COURSE H



*Approx 8NM*

**COURSE H**

1	Start	
2	Green Is W Cardinal	S
3	Green Is N Cardinal	S
4	St Helena Sth Cardinal	P
5	Red Beacon N St Helena	S
6	St Helena Sth Cardinal	S
7	Green Is N Cardinal	P
8	Green Is W Cardinal	P
9	Finish	

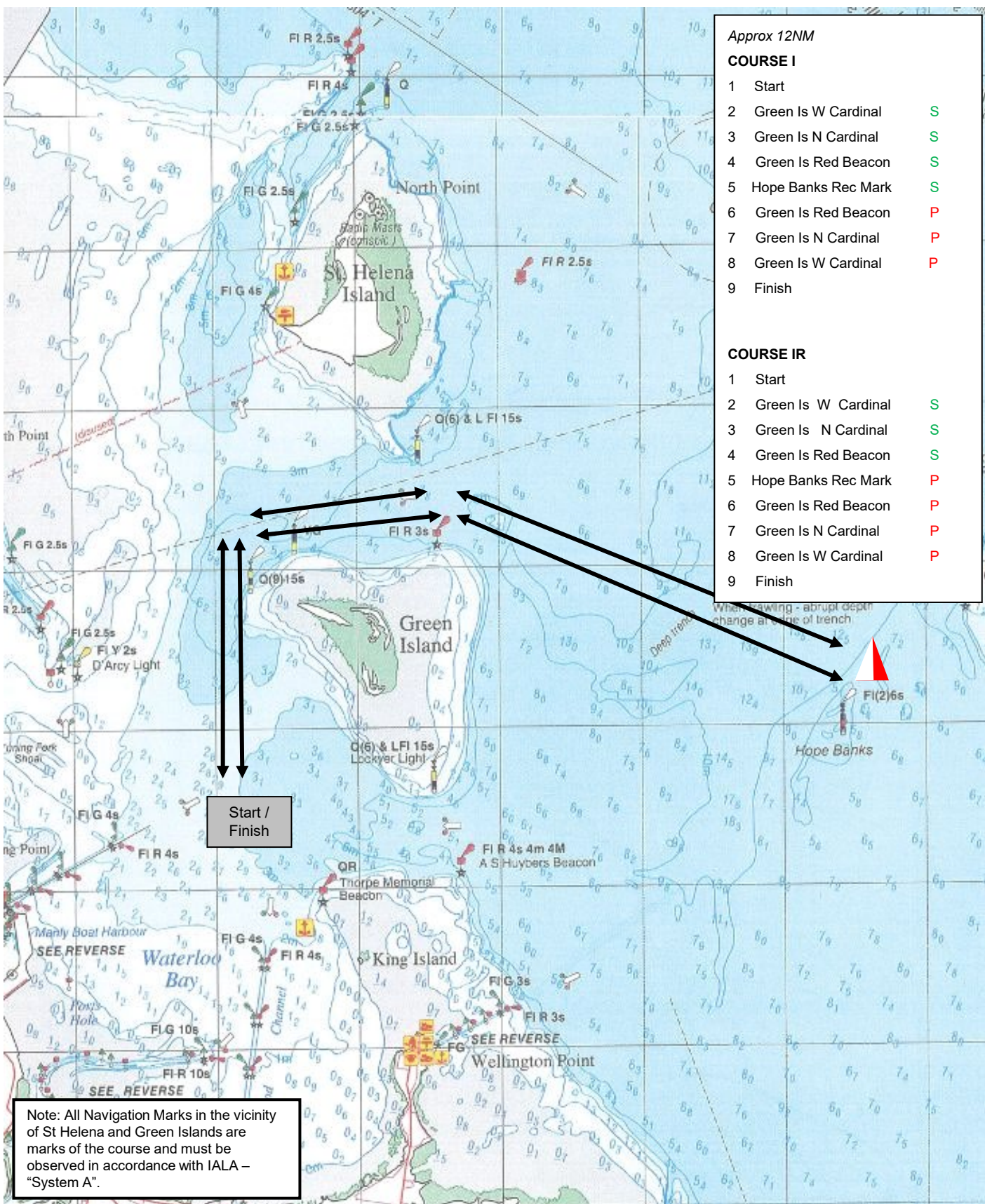
Start / Finish

Note: All Navigation Marks in the vicinity of St Helena and Green Islands are marks of the course and must be observed in accordance with IALA – "System A".

**Note:** charts illustrated in these sailing instructions show the general racing area – **Not for Navigation**



COURSE I ● / COURSE IR ● ☒



*Approx 12NM*

COURSE I		
1	Start	
2	Green Is W Cardinal	S
3	Green Is N Cardinal	S
4	Green Is Red Beacon	S
5	Hope Banks Rec Mark	S
6	Green Is Red Beacon	P
7	Green Is N Cardinal	P
8	Green Is W Cardinal	P
9	Finish	

COURSE IR		
1	Start	
2	Green Is W Cardinal	S
3	Green Is N Cardinal	S
4	Green Is Red Beacon	S
5	Hope Banks Rec Mark	P
6	Green Is Red Beacon	P
7	Green Is N Cardinal	P
8	Green Is W Cardinal	P
9	Finish	

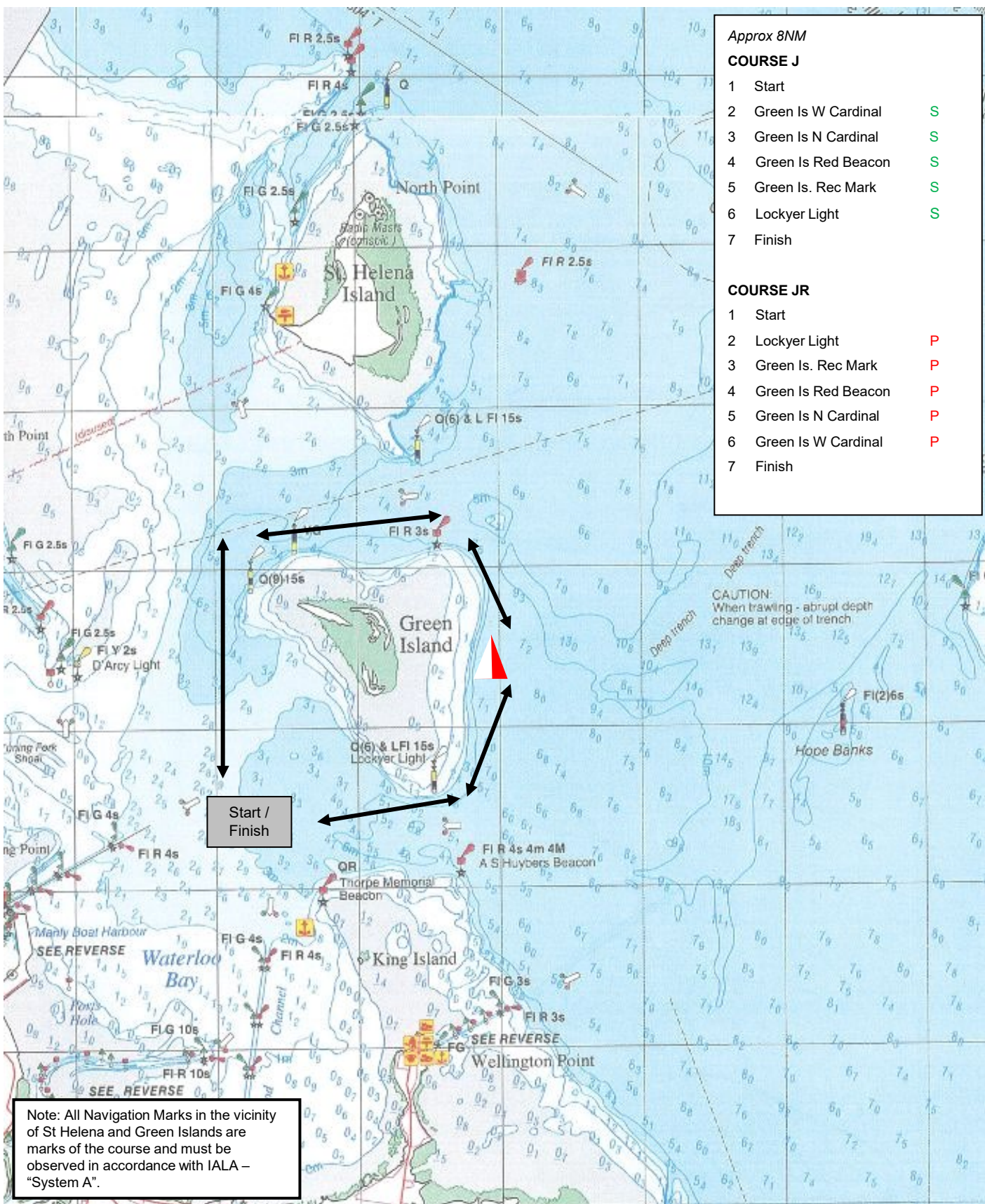
Start / Finish

Note: All Navigation Marks in the vicinity of St Helena and Green Islands are marks of the course and must be observed in accordance with IALA – "System A".

**Note:** charts illustrated in these sailing instructions show the general racing area – **Not for Navigation**



COURSE J  / COURSE JR  



*Approx 8NM*

**COURSE J**

1	Start	
2	Green Is W Cardinal	S
3	Green Is N Cardinal	S
4	Green Is Red Beacon	S
5	Green Is. Rec Mark	S
6	Locker Light	S
7	Finish	

**COURSE JR**

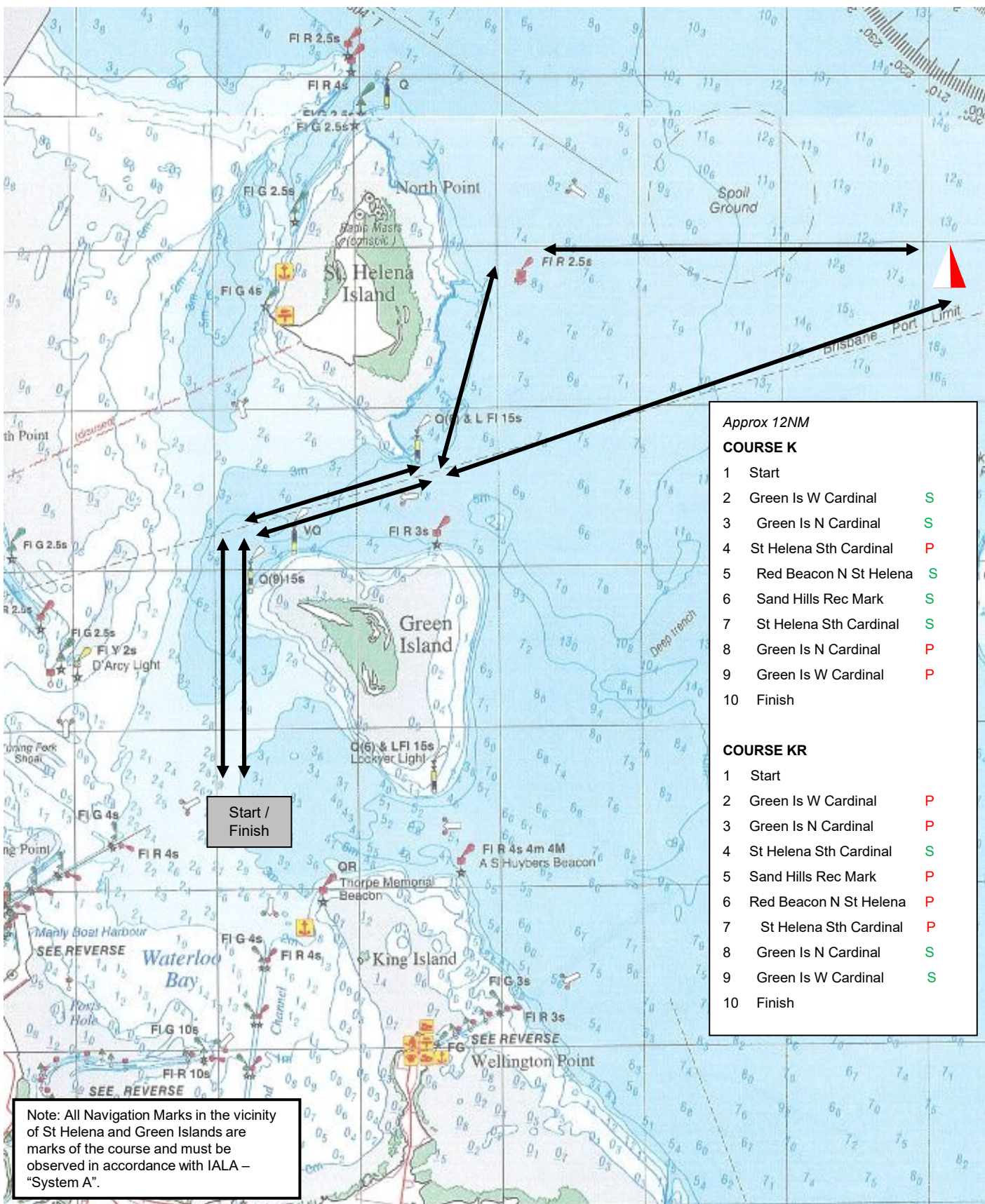
1	Start	
2	Locker Light	P
3	Green Is. Rec Mark	P
4	Green Is Red Beacon	P
5	Green Is N Cardinal	P
6	Green Is W Cardinal	P
7	Finish	

Note: All Navigation Marks in the vicinity of St Helena and Green Islands are marks of the course and must be observed in accordance with IALA – "System A".

**Note:** charts illustrated in these sailing instructions show the general racing area – **Not for Navigation**



COURSE K  / COURSE KR 



*Approx 12NM*

**COURSE K**

- 1 Start
- 2 Green Is W Cardinal S
- 3 Green Is N Cardinal S
- 4 St Helena Sth Cardinal P
- 5 Red Beacon N St Helena S
- 6 Sand Hills Rec Mark S
- 7 St Helena Sth Cardinal S
- 8 Green Is N Cardinal P
- 9 Green Is W Cardinal P
- 10 Finish

**COURSE KR**

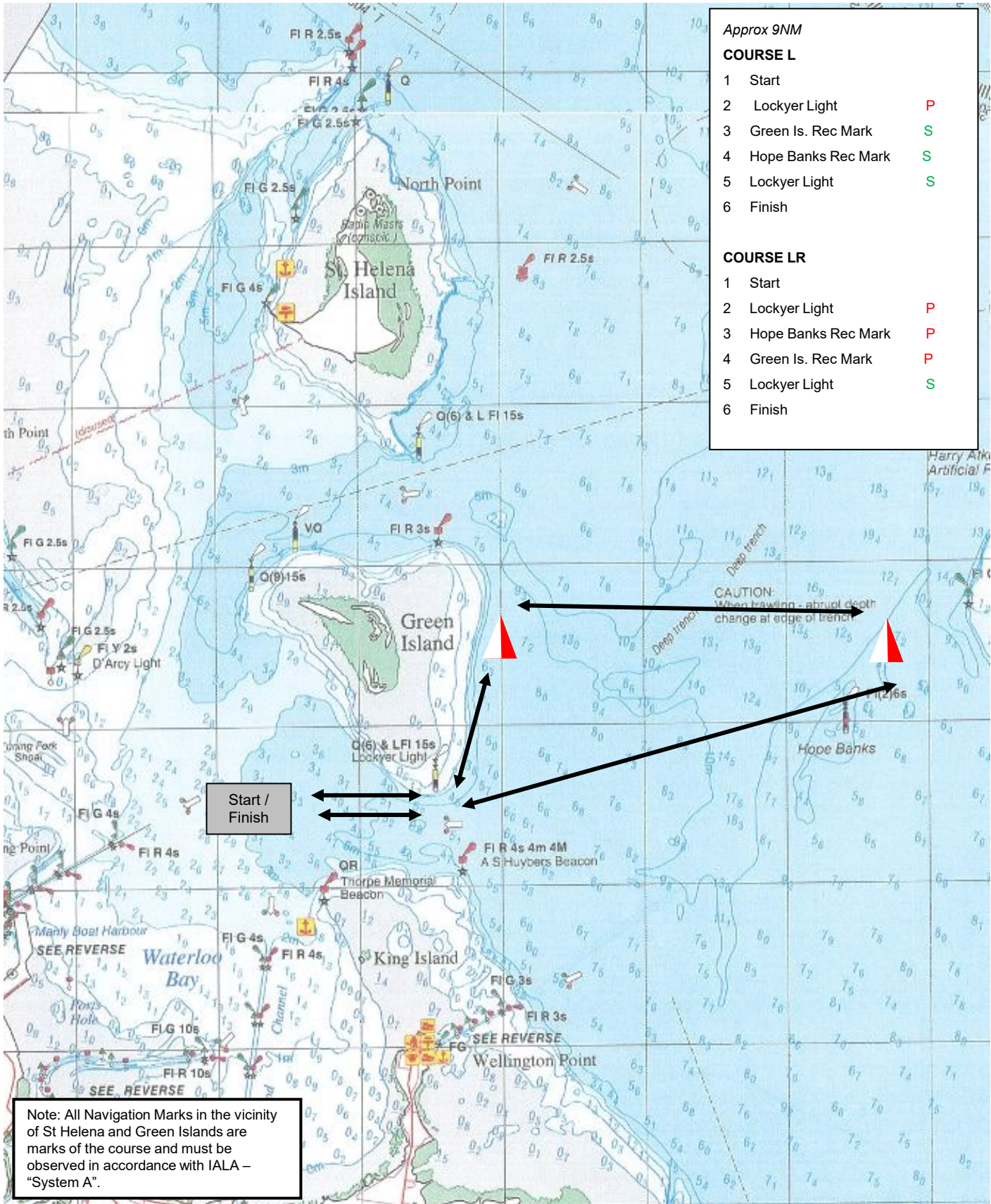
- 1 Start
- 2 Green Is W Cardinal P
- 3 Green Is N Cardinal P
- 4 St Helena Sth Cardinal S
- 5 Sand Hills Rec Mark P
- 6 Red Beacon N St Helena P
- 7 St Helena Sth Cardinal P
- 8 Green Is N Cardinal S
- 9 Green Is W Cardinal S
- 10 Finish

Note: All Navigation Marks in the vicinity of St Helena and Green Islands are marks of the course and must be observed in accordance with IALA – "System A".

**Note:** charts illustrated in these sailing instructions show the general racing area – **Not for Navigation**



# COURSE L / COURSE LR



*Approx 9NM*

COURSE L		
1	Start	
2	Lockyer Light	P
3	Green Is. Rec Mark	S
4	Hope Banks Rec Mark	S
5	Lockyer Light	S
6	Finish	

COURSE LR		
1	Start	
2	Lockyer Light	P
3	Hope Banks Rec Mark	P
4	Green Is. Rec Mark	P
5	Lockyer Light	S
6	Finish	

Start / Finish

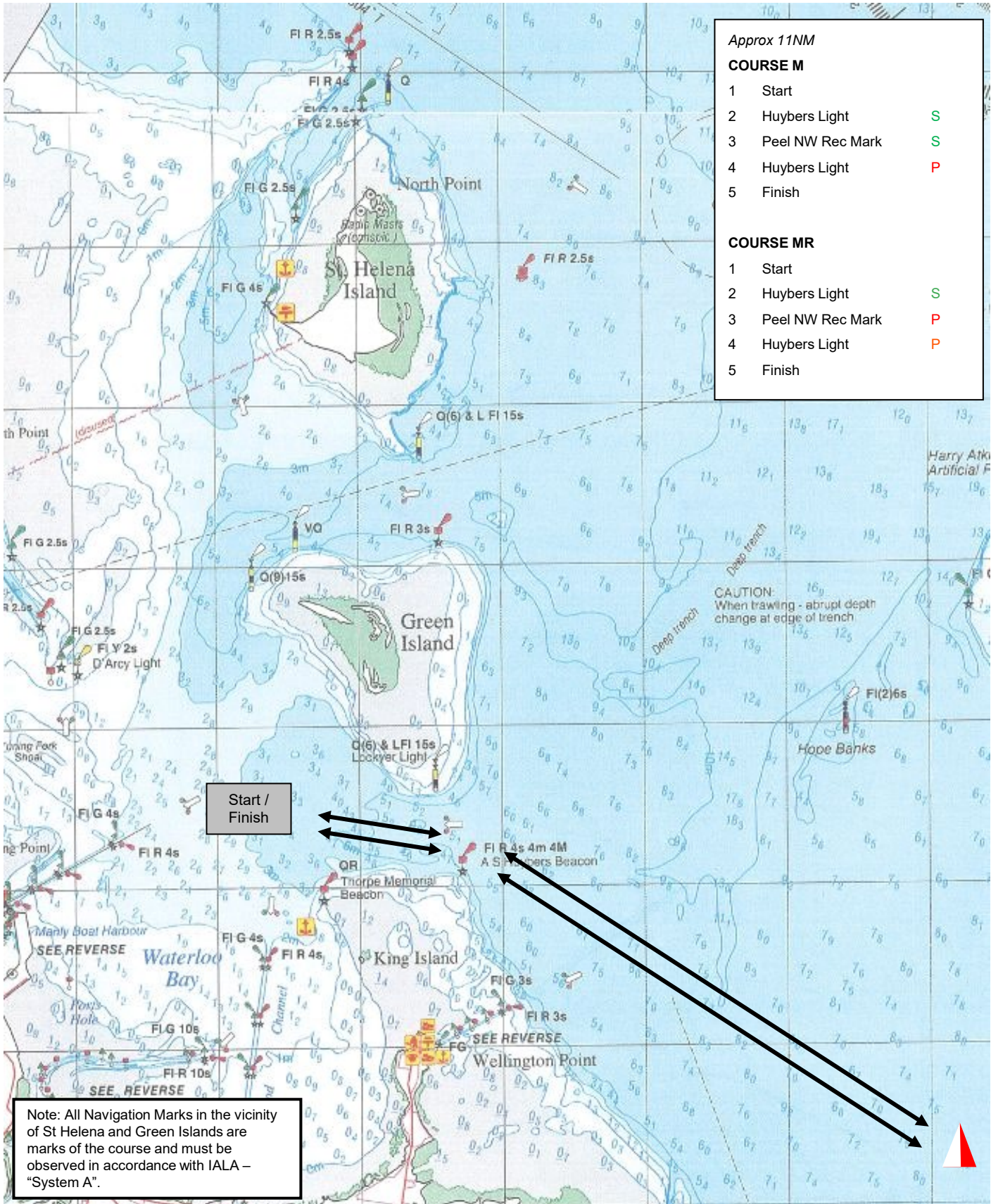
CAUTION: When travelling, abrupt depth change at edge of trench

Note: All Navigation Marks in the vicinity of St Helena and Green Islands are marks of the course and must be observed in accordance with IALA – "System A".

**Note:** charts illustrated in these sailing instructions show the general racing area – **Not for Navigation**



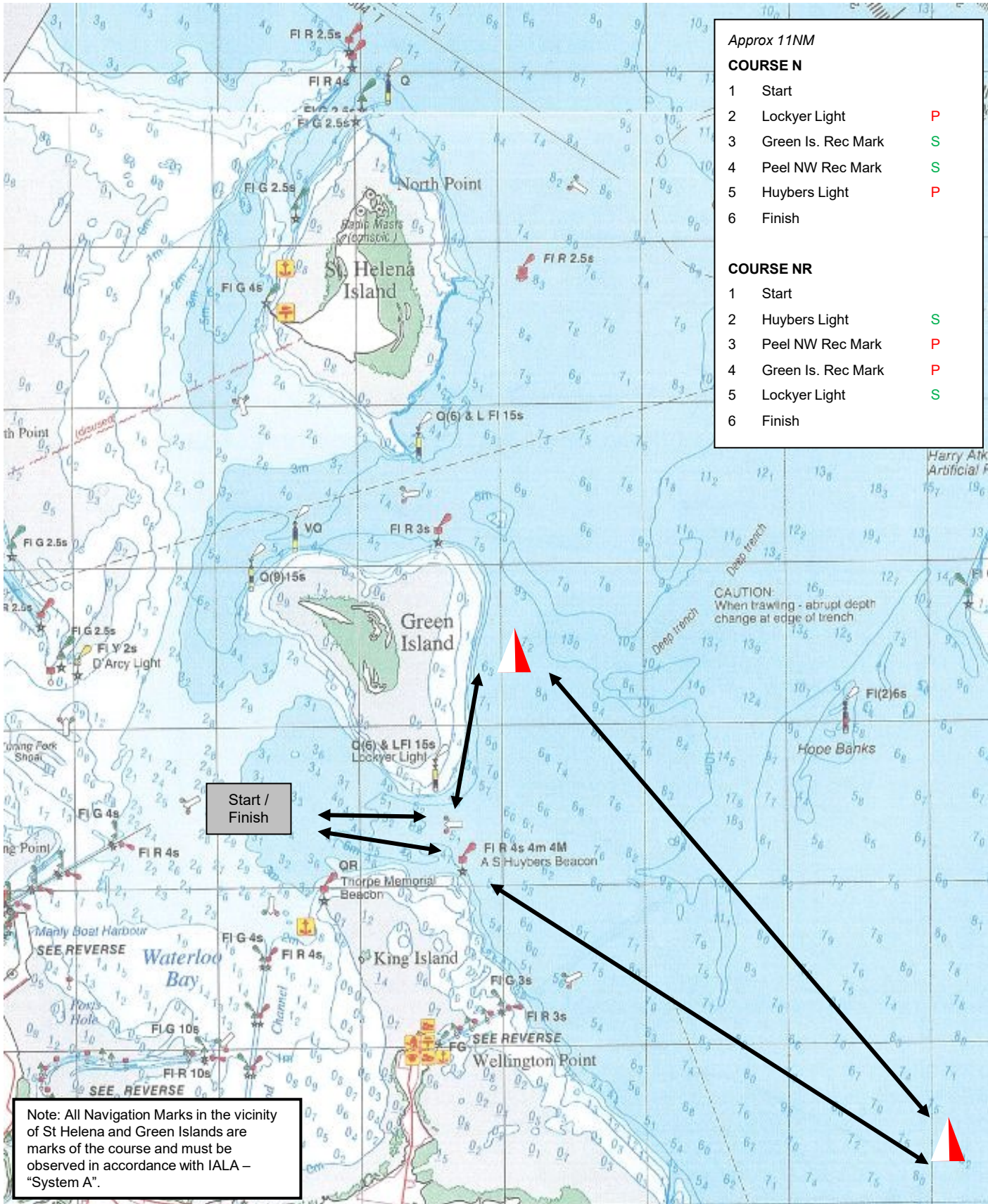
# COURSE M / COURSE MR



**Note:** charts illustrated in these sailing instructions show the general racing area – **Not for Navigation**



COURSE N  / COURSE NR  



Approx 11NM

COURSE N		
1	Start	
2	Lockyer Light	P
3	Green Is. Rec Mark	S
4	Peel NW Rec Mark	S
5	Huybers Light	P
6	Finish	

COURSE NR		
1	Start	
2	Huybers Light	S
3	Peel NW Rec Mark	P
4	Green Is. Rec Mark	P
5	Lockyer Light	S
6	Finish	

Start / Finish

Note: All Navigation Marks in the vicinity of St Helena and Green Islands are marks of the course and must be observed in accordance with IALA – "System A".

**Note:** charts illustrated in these sailing instructions show the general racing area – **Not for Navigation**



# Thanks to WAGS Sponsors

