



VX One Queensland State Championship

09th – 10th December 2023

SAILING INSTRUCTIONS (SI)

Organising Authority
ROYAL QUEENSLAND YACHT SQUADRON LTD
578 Royal Esplanade, Manly, QLD 4179

The notation '[NP]' in a rule of the sailing instructions (SIs) means that a boat may not protest another boat for breaking that rule. This changes RRS 60.1(a).

The notation [DP] in a rule of the sailing instructions (SI's) means that a protest committee can award a penalty less than disqualification (including no penalty) at their discretion. This changes Rule 64.2

Notation '[SP]' in a rule means a standard penalty may be applied by the race committee without a hearing. This changes RRS 63.1 and A5.

1. RULES

- 1.1. The event is governed by the rules as defined in The Racing Rules of Sailing.
- 1.2. The prescriptions and special regulations of Australian Sailing Part 2 will apply.
- 1.3. Appendix T – Arbitration will apply.
- 1.4. Where there is a difference between the Notice of Race (NoR) and the Sailing Instructions (SI) the SI take precedence.
- 1.5. Competitors must follow Club Policies (<https://www.rqys.com.au/policiesanddocuments/>).

2. CHANGES TO SAILING INSTRUCTIONS

- 2.1. Any change to the sailing instructions will be posted before 0900 on the day it will take effect, except that any change to the schedule of races will be posted by 2000 on the day before it will take effect.

3. COMMUNICATIONS WITH COMPETITORS

- 3.1. Notices to competitors will be posted on the official notice board located at <https://www.rqys.com.au/sailingnoticeboard/>.
- 3.2. The race office is located at The RQYS Sailing Office located adjacent to the Main Rigging Lawn, telephone 3396 8666, email sailing@rqys.com.au.
- 3.3. On the water, the race committee intends to monitor and communicate with competitors on either VHF radio channel 72 or 77, station will be confirmed via display board at stern of start boat.
- 3.4. [DP][NP] While racing, except in an emergency, a boat shall not make voice or data transmissions and shall not receive voice or data communication that is not available to all boats.

4. [DP][NP] CODE OF CONDUCT

- 4.1 Competitors and support persons shall comply with reasonable requests from race officials.
- 4.2 Competitors and support persons shall handle any equipment or place advertising provided by the organizing authority with care, seamanship, in accordance with any instructions for its use and without interfering with its functionality.

5. SIGNALS MADE ASHORE

- 5.1. Signals made ashore will be displayed at the official flag pole located at the top of the Eastern Gangway of the Bill Kirby Docks.
- 5.2. When flag AP is displayed ashore, '1 minute' is replaced with 'not less than 45 minutes' in Race Signals AP.
- 5.3. When a White flag with the letter "A" is displayed ashore, signals refer to the Alpha course.

6. SCHEDULE OF RACES

6.1.

Date	Event	Time
Friday 08 December 2023	Competitor Registration	1200 – 1600 hrs
Saturday 09 December 2023	Registration	0900 – 1100 hrs
	Briefing (With Sail Brisbane Alpha Course)	0930 hrs
	First Warning Signal (With Sail Brisbane Alpha Course)	1100 hrs (3 Races)
Sunday 10 December 2023	First Warning Signal (With Sail Brisbane Alpha Course)	1100 hrs (3 Races)
	Presentation	ASAP After Racing notified by SMS

6.2. On the last scheduled day of racing no warning signal will be made after 1500 hrs.

6.3. A Maximum of six (6) races shall be raced in the series.

6.4. One extra race per day may be sailed, provided that no class becomes more than one race ahead of schedule and the change is made according to SI 2.1.

6.5. To alert boats that a race or sequence of races shall begin soon, the orange starting line flag shall be displayed with one (1) sound at least five (5) minutes before a warning signal is made.

7. CLASS FLAGS

7.1. The Class flag is VX One Insignia / white background.

8. RACING AREA

8.1 SI Attachment A shows the location of the racing area.

9. COURSES

9.1. The diagram(s) in SI Attachment B show the courses, including the approximate angles between legs, the order in which marks are to be passed, and the side on which each mark is to be left.

9.2. No later than the warning signal, the race committee signal vessel will display the course to be sailed and the approximate compass bearing of the first leg.

10. MARKS

10.1. Marks are as described in SI Attachment B.

10.2. If one of the gate marks is missing then the remaining mark shall be left to port.

11. THE START

11.1. The starting line is between a staff displaying an orange flag on the signal vessel at the starboard end and the course side of the port-end starting mark.

11.2. Boats whose warning signal has not been made shall avoid the starting area during the starting sequence for other races.

11.3. A boat that does not start within 4 minutes after her starting signal will be scored Did Not Start without a hearing. This changes RRS A5.1 and A5.2.

12. CHANGE OF THE NEXT LEG OF THE COURSE

- 12.1. To change the next leg of the course, the race committee will lay a new mark (or move the finishing line) and remove the original mark as soon as practicable. When in a subsequent change a new mark is replaced, it will be replaced by an original mark.
- 12.2. Alpha Course: If mark 1 is changed mark 1A shall be ignored.

13. THE FINISH

- 13.1. The finishing line will be between a staff displaying a blue flag on the finishing boat at the starboard end and the course side of the port-end finishing mark.

14. PENALTY SYSTEM

15. For Alpha course boats, RRS 44.1 is changed so that the Two-Turns Penalty is replaced by the One-Turn Penalty.

16. TIME LIMITS AND TARGET TIMES

- 16.1. The Target time, Race Time Limit (see RRS 35), and the Finishing Window are shown in the table below.

Target Time	Race Time Limit	Finishing Window
40 minutes	60 minutes	15 minutes

- 16.2. The Finishing Window is the time for boats to finish after the first boat sails the course and finishes. Boats failing to finish within the Finishing Window, and not subsequently retiring, penalized or given redress, will be scored Time Limit Expired (TLE) without a hearing. A boat scored TLE shall be scored points for the finishing place one more than the points scored by the last boat that finished within the Finishing Window. This changes RRS 35, A5.1, A5.2 and A10.
- 16.3. Failure to meet the Target Time will not be grounds for redress. This changes RRS 62.1(a).

17. HEARING REQUESTS

- 17.1. The protest time limit is 60 minutes after the last boat finishes the last race of the day or the race committee signals no more racing today, whichever is later. The time will be posted on the official notice board.
- 17.2. Hearing request forms are available from the race office at the RQYS Sailing Office or <https://www.rqys.com.au/regatta-club-racing-documents-auditors/>
- 17.3. Notices will be posted no later than 30 minutes after the protest time limit to inform competitors of hearings in which they are parties or named as witnesses. Hearings will be held at a time and place advised on the hearing notice.

18. SCORING

- 18.1. Three (3) races are required to be completed to constitute a series.
- 18.2. When fewer than five (5) races have been completed, a boat's series score will be the total of her race scores.
- 18.3. When five (5) or more races have been completed, a boat's series score will be the total of her race scores excluding her worst score.

19. SAFETY REGULATIONS

- 19.1. All skippers shall SIGN ON before racing each day and SIGN OFF at the earliest possible time after the completion of racing (but not later than the end of protest time). Sign on will be available two (2) hours prior to the first warning signal scheduled on the day of racing.
- 19.1.1. Sign on Sheets for all classes will be on the sailing office timber deck.

- 19.2. The skipper of a boat that retires or does not intend to continue racing is required to SIGN OFF immediately on return to shore.
- 19.3. A boat that retires from a race shall notify the race committee as soon as possible.
- 19.4. Competitors shall comply with the following harbour bylaws:
 - 19.4.1. All sailing vessels shall give way to powered vessels at all times whilst inside the Manly Boat Harbour. Once outside the Manly Boat Harbour.
 - 19.4.2. Competitors are to stay outside of the main channel as soon as possible, keeping clear of powered vessels.
 - 19.4.3. No Spinnakers are to be flown in the Manly Harbour 6-knot area.
- 19.5. [SP] Failure to SIGN ON shall result in that boat being penalised three (3) points for the first race of the session (but not worse than DNF). Failure to SIGN OFF shall result in that boat being penalised three (3) points for the last race of the session (but not worse than DNF). Penalties will be applied without a hearing. This changes RRS 63.1 and A5.

20. REPLACEMENT OF CREW OR EQUIPMENT

- 20.1. [DP] Substitution of competitors:
 - 20.1.1. The crew shall consist of a minimum of 2 persons. Any member of the crew may act as helmsperson at any time if they meet the provisions of 20.1.4.
 - 20.1.2. No crew member shall be substituted during an event unless express written consent is granted by the Jury or Race Committee. If a crew substitution is requested, the total crew weight shall not change by more than 10 kg.
 - 20.1.3. Any sailor may skipper or crew only if they are not or will not be compensated for competing. Skipper and crew may be required to sign a declaration of compliance.
 - 20.1.4. In a class sanctioned event each helmsperson shall be a VXACA full or associate member in good standing with the VXACA.
- 20.2. [DP] Substitution of damaged or lost equipment is not allowed unless authorized in writing by the Race Committee. Requests for substitution shall be made to the committee at the first reasonable opportunity, which may be after the race.

21. EQUIPMENT AND MEASUREMENT CHECKS

- 21.1. A boat or equipment may be inspected at any time for compliance with the class rules, notice of race and sailing instructions.
- 21.2. [DP][NP] When instructed by a race official on the water, a boat shall proceed to a designated area for inspection.

22. OFFICIAL VESSELS

- 22.1. Official vessels will be identified by displaying a white flag with black letter 'RC', 'J' or red 'MEDIA'.

23. [DP][NP] SUPPORT TEAMS

- 23.1. All external powerboats coaching/supporting competitors for this event shall register with the Organising Authority, the RQYS Sailing Office, prior to the commencement of racing. Registration entitles boats to a range of benefits including launching facilities, overnight berthing, refuelling facilities and access to race course outside of 50m of any competitor or mark between start signal and finish of last boat, except when asked to assist by the Race Committee.
- 23.2. Registration for Support boat can be done on the [online portal](#) OR at the RQYS Sailing Office during Registration. Boats that do not have an identifying sticker shall pay \$10.00 to receive an identifying sticker.

23.3. Support and spectator boats that do not register will not be permitted to launch or retrieve from RQYS premises, or berth there overnight; the Organising Authority reserves the right to remove such vessels from their premises.

23.4. All support/coach boats must have capability of communicating on VHF channel 72, 77 and 16 for the duration of the regatta.

24. TRASH DISPOSAL

24.1. Trash may be placed aboard official or support person vessels.

25. [DP][NP] BERTHING

25.1. Boats shall be kept in their assigned places while in the harbour.

25.2. Berthing shall be at VIP Docks 3 – 5.

25.3. Boats shall follow all berthing directions from the Sailing or Marina Office to the best of their ability.

26. [DP][NP] HAUL-OUT RESTRICTIONS

26.1. Boats shall not be hauled out during the event.

26.2. Requests for haul out shall be made to the race committee at the first reasonable opportunity.

27. PRIZES

27.1. Prizes will be given as follows:

27.1.1. 1st, 2nd and 3rd in Scratch.

27.1.2. 1st Senior Skipper over 60.

27.1.3. 1st Junior U21.

27.1.4. 1st Female.

27.2. Additional prizes may be awarded at the discretion of the Organising Authority.

28. RISK STATEMENT

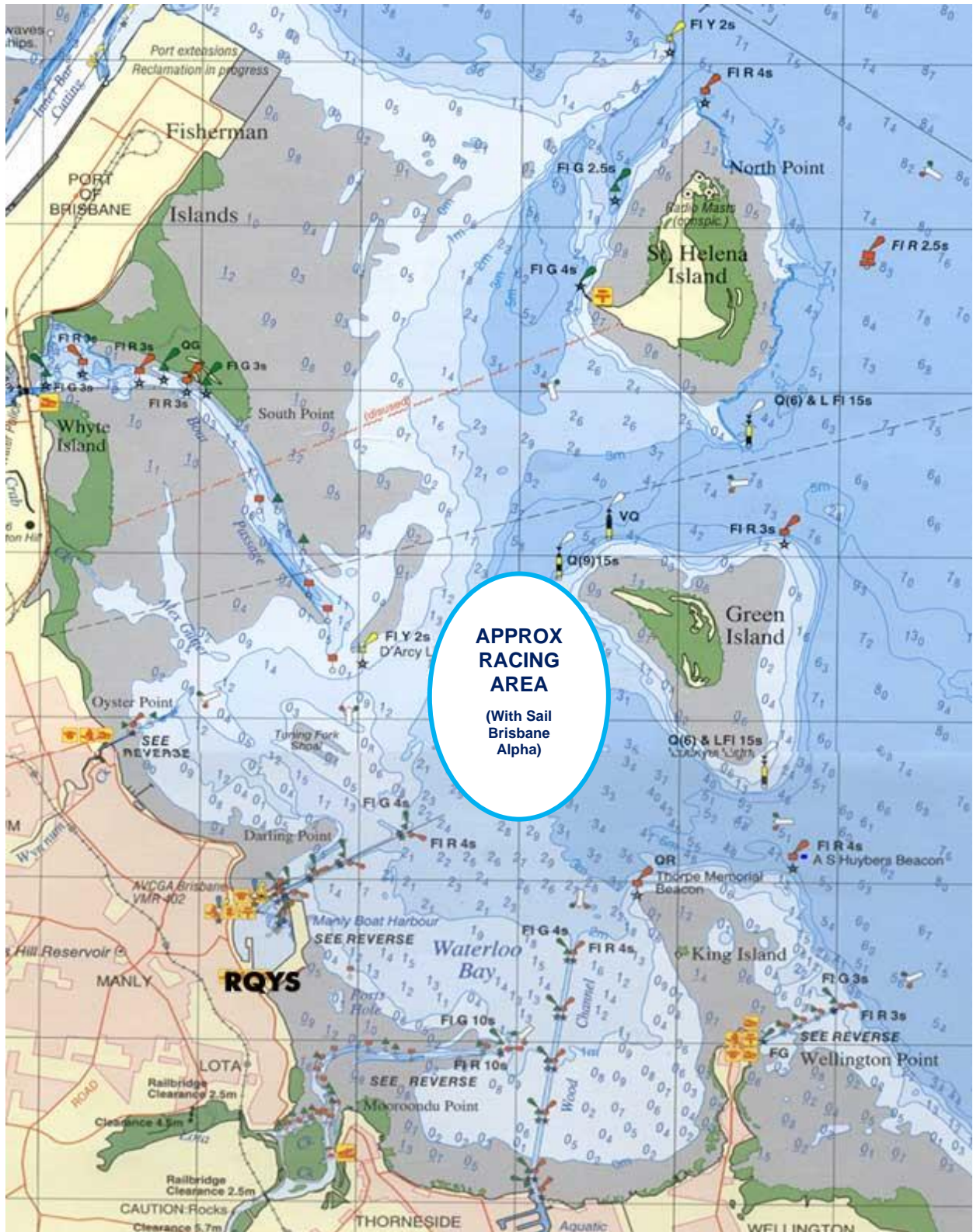
28.1. RRS 3 states: 'The responsibility for a boat's decision to participate in a race or to continue to race is hers alone.' By participating in this event each competitor agrees and acknowledges that sailing is a potentially dangerous activity with inherent risks. These risks include strong winds and rough seas, sudden changes in weather, failure of equipment, boat handling errors, poor seamanship by other boats, loss of balance on an unstable platform and fatigue resulting in increased risk of injury. **Inherent in the sport of sailing is the risk of permanent, catastrophic injury or death by drowning, trauma, hypothermia or other causes.**

28.2. All participants are required to comply with any safety provisions as mandated under the Racing Rules of Sailing, the Australian Sailing Special Regulations Part 2 for Off The Beach Boats, and any Class Rules that may apply. The Squadron encourages and supports competitors who believe it is appropriate to exceed the above requirements (such as the wearing of helmets, body armor, impact vests, etc.) if they or their guardian believe that conditions and their personal circumstances warrant. All competitor's attention is drawn to the Risk Statement - Section 28 of the Sailing Instructions.

29. INSURANCE

29.1. Each participating boat shall be insured with valid third-party liability insurance with a minimum cover of \$10,000,000AUD per incident or the equivalent.

SI ATTACHMENT A



SI ATTACHMENT B

CODE	COURSE	MARKS DESCRIPTION
LA1	Start – 1 – 1a – 4p – Finish	Marks 1: Yellow Inflatable
LA2	Start – 1 – 1a – 4s/4p – 1 – 1a – 4p – Finish	Mark 2, 4s/4p: Orange Inflatables
LA3	Start – 1 – 1a – 4s/4p – 1 – 1a – 4s/4p – 1 – 1a – 4p – Finish	Start Pin & 1a: Orange teardrop
L1	Start – 2 – 4p – Finish	Mark 3 & Finish Pin: White Inflatable
L2	Start – 2 – 4s/4p – 2 – 4p – Finish	Change Mark: Mark 1: Green Inflatable Mark 2: Purple Inflatable
L3	Start – 2 – 4s/4p – 2 – 4s/4p – 2 – 4p – Finish	
T1	Start – 2 – 3 – 4p – Finish	
T2	Start – 2 – 3 – 4s/4p – 2 – 4p – Finish	
T3	Start – 2 – 3 – 4s/4p – 2 – 4s/4p – 2 – 3 – 4p – Finish	

