



SAIL BRISBANE REGATTA

Incorporating:

OK Dinghy QLD State Championships

F17 & F18 QLD State Championship

VX One State Championships

9th – 10th DECEMBER 2023



SAILING INSTRUCTIONS

(SI)

Including Amendment 2

Organising Authority

ROYAL QUEENSLAND YACHT SQUADRON LTD

578 Royal Esplanade, Manly, QLD 4179

The notation '[NP]' in a rule of the sailing instructions (SIs) means that a boat may not protest another boat for breaking that rule. This changes RRS 60.1(a).

Notation '[DP]' in a rule means a penalty for a breach of the rule may, at the discretion of the protest committee, be less than disqualification.

Notation '[SP]' in a rule means a standard penalty may be applied by the race committee without a hearing. This changes RRS 63.1 and A5.

1. RULES

- 1.1 Individual Sailing Instructions for F17 & F18 QLD State Championship, International OK Dinghy Class QLD Championships, VX One QLD State Championships supersede these Sailing Instructions.
- 1.2 The event is governed by the rules as defined in The Racing Rules of Sailing.
- 1.3 The prescriptions and special regulations of Australian Sailing Part 2 will apply.
- 1.4 The applicable class rules will apply.
- 1.5 Introductory Rules of Racing apply to Green Fleet sailors (See SI Attachment D)
- 1.6 Appendix T – Arbitration will apply.
- 1.7 RRS Appendix P as amended by SI 14.2 will apply.

2. CHANGES TO SAILING INSTRUCTIONS

- 2.1. Any change to the sailing instructions will be posted before 0900 on the day it will take effect, except that any change to the schedule of races will be posted by 2000 on the day before it will take effect.

3. COMMUNICATIONS WITH COMPETITORS

- 3.1. Notices to competitors will be posted on the official notice board located at <https://www.rqys.com.au/sailingnoticeboard/>.
- 3.2. The race office is located at The RQYS Sailing Office located adjacent to the Main Rigging Lawn, telephone 3396 8666, email sailing@rqys.com.au.
- 3.3. On the water, the race committee intends to monitor and communicate with VX One competitors on VHF radio channel 72 & 77.
- 3.4. [DP] [NP] While racing, except in an emergency, a boat shall not make voice or data transmissions and shall not receive voice or data communication that is not available to all boats.

4. [DP] [NP] CODE OF CONDUCT

- 4.1 Competitors and support persons shall comply with reasonable requests from race officials.
- 4.2 Competitors and support persons shall handle any equipment or place advertising provided by the organizing authority with care, seamanship, in accordance with any instructions for its use and without interfering with its functionality.

5. SIGNALS MADE ASHORE

- 5.1. Signals made ashore will be displayed at the official flag pole located at the top of the Eastern Gangway of the Bill Kirby Docks.
- 5.2. When flag AP is displayed ashore, '1 minute' is replaced with 'not less than 45 minutes' in Race Signals AP.
- 5.3. When a White flag with the letter "A" is displayed ashore, signals refer to the Alpha course.
- 5.4. When a White flag with the letter "B" is displayed ashore, signals refer to the Bravo course.
- 5.5. When a White flag with the letter "C" is displayed ashore, signals refer to the Charlie course.

6. SCHEDULE OF RACES

6.1.

| | |
|---|---------------------------------------|
| Friday 08 December 2023 | |
| Competitor Registrations | 1200 – 1600 hrs |
| Saturday 09 December 2023 | |
| Competitor Registrations | 0900 – 1100 hrs |
| Alpha Course Briefing on the RQYS Lawn | 0930 hrs |
| Bravo and Charlie Briefing on the RQYS Lawn | 1000 hrs |
| Alpha First Warning Signal | Warning not before 1100 hrs (3 Races) |
| Bravo and Charlie First Warning Signal | Warning not before 1130 hrs (3 Races) |
| Sunday 10 December 2023 | |
| Alpha First Warning Signal | 1100 hrs (3 Races) |
| Bravo and Charlie First Warning Signal | 1130 hrs (3 Races) |
| Regatta Prizes Announced & Presentation | ASAP After Racing notified by SMS |

- 6.2. A Maximum of six (6) races are scheduled.
- 6.3. One extra race per day may be sailed, provided that no class becomes more than one race ahead of schedule and the change is made according to SI 2.1.
- 6.4. On the last scheduled day of racing no warning signal will be made after 1500 hrs.
- 6.5. To alert boats that a race or sequence of races shall begin soon, the orange starting line flag shall be displayed with one (1) sound at least five (5) minutes before a warning signal is made.

7. CLASS FLAGS & COURSE ALLOCATIONS

- 7.1. SI Attachment B describes the class flags & course allocations.

8. RACING AREA

- 8.1 SI Attachment A shows the location of the racing area(s).

9. COURSES

- 9.1. The diagrams in SI Attachment C shows the courses, including the approximate angles between legs, the order in which marks are to be passed, and the side on which each mark is to be left.
- 9.2. No later than the warning signal, the race committee signal vessel will display the approximate compass bearing of the first leg.

10. MARKS

- 10.1. Marks are as described in SI Attachment C.
- 10.2. If one of the gate marks is missing then the remaining mark shall be left to port.

11. THE START

- 11.1. The starting line is between a staff displaying an orange flag on the signal vessel at the starboard end and the course side of the port-end starting mark.
- 11.2. [DP] [NP]Boats whose warning signal has not been made shall avoid the starting area during the starting sequence for other races.
- 11.3. A boat that does not start within 4 minutes after her starting signal will be scored Did Not Start without a hearing. This changes RRS A5.1 and A5.2.

12. CHANGE OF THE NEXT LEG OF THE COURSE

- 12.1. To change the next leg of the course, the race committee will lay a new mark (or move the finishing line) and remove the original mark as soon as practicable. When in a subsequent change a new mark is replaced, it will be replaced by an original mark.
- 12.2. Alpha Course: If mark 1 is changed mark 1A shall be ignored.

13. THE FINISH

- 13.1. The finishing line will be between a staff displaying a blue flag on the finishing boat at the starboard end and the course side of the port-end finishing mark.

14. PENALTY SYSTEM

- 14.1. For Alpha course boats, RRS 44.1 is changed so that the Two-Turns Penalty is replaced by the One-Turn Penalty.
- 14.2. RRS P2.3 will not apply and RRS P2.2 is changed so that it will apply to any penalty after the first one. After the second penalty, any breach of RRS 42 may result in the protest committee taking further action under RRS 2 and/or RRS 69.

15. TIME LIMITS AND TARGET TIMES

- 15.1. The Race Time Limit (see RRS 35), Target Times and the Finishing Window are shown in SI Attachment B.
- 15.2. The Finishing Window is the time for boats to finish after the first boat sails the course and finishes. Boats failing to finish within the Finishing Window, and not subsequently retiring, penalized or given redress, will be scored Time Limit Expired (TLE) without a hearing. A boat scored TLE shall be scored points for the finishing place one more than the points scored by the last boat that finished within the Finishing Window. This changes RRS 35, A5.1, A5.2 and A10.
- 15.3. Failure to meet the Target Time will not be grounds for redress. This changes RRS 62.1(a).

16. HEARING REQUESTS

- 16.1. For each class, the protest time limit is 60 minutes after the last boat in that class finishes the last race of the day or the race committee signals no more racing today, whichever is later. The time will be posted on the official notice board.
- 16.2. Hearing request forms are available from the race office at the RQYS Sailing Office or <https://www.rqys.com.au/regatta-club-racing-documents-auditors/>
- 16.3. Notices will be posted no later than 30 minutes after the protest time limit to inform competitors of hearings in which they are parties or named as witnesses. Hearings will be held at a time and place advised on the hearing notice.

17. SCORING

- 17.1. Three (3) races are required to be completed to constitute a series.
- 17.2. When fewer than five (5) races have been completed, a boat's series score will be the total of her race scores.
- 17.3. When five (5) or more races have been completed, a boat's series score will be the total of her race scores excluding her worst score.

18. [DP] [NP] SAFETY REGULATIONS

- 18.1. All skippers shall SIGN ON before racing each day and SIGN OFF at the earliest possible time after the completion of racing (but not later than the end of protest time). Sign on will be available two (2) hours prior to the first warning signal scheduled on the day of racing.
 - 18.1.1. Sign on Sheets for all classes will be on the sailing office timber deck.
 - 18.1.2. Additional Sign on Sheet for windsurfing classes will be at the Centre of Excellence.
- 18.2. The skipper of a boat that retires or does not intend to continue racing is required to SIGN OFF immediately on return to shore.
- 18.3. A boat that retires from a race shall notify the race committee as soon as possible.
- 18.4. Competitors shall comply with the following harbour bylaws:
 - 18.4.1. All sailing vessels shall give way to powered vessels at all times whilst inside the Manly Boat Harbour. Once outside the Manly Boat Harbour.
 - 18.4.2. Competitors are to stay outside of the main channel as soon as possible, keeping clear of powered vessels.
 - 18.4.3. No Spinnakers are to be flown in the Manly Harbour 6-knot area.
- 18.5. [SP] Failure to SIGN ON shall result in that boat being penalised three (3) points for the first race of the session (but not worse than DNF). Failure to SIGN OFF shall result in that boat being penalised three (3) points for the last race of the session (but not worse than DNF). Penalties will be applied without a hearing. This changes RRS 63.1 and A5.

19. [DP] REPLACEMENT OF CREW OR EQUIPMENT

- 19.1. Substitution of competitors is not allowed without prior written approval of the Race Committee.
- 19.2. Substitution of damaged or lost equipment is not allowed unless authorized in writing by the Race Committee. Requests for substitution shall be made to the committee at the first reasonable opportunity, which may be after the race.

20. EQUIPMENT AND MEASUREMENT CHECKS

- 20.1. A boat or equipment may be inspected at any time for compliance with the class rules, notice of race and sailing instructions.
- 20.2. [DP] [NP] When instructed by a race official on the water, a boat shall proceed to a designated area for inspection.

21. OFFICIAL VESSELS

- 21.1. Official vessels will be identified by displaying a white flag with black letter 'RC', 'J' or red 'MEDIA'.

22. [DP] [NP] SUPPORT & COACH PERSON VESSELS

- 22.1. All external powerboats coaching/supporting competitors for this event shall register with the Organising Authority, the RQYS Sailing Office, prior to the commencement of racing. Registration entitles boats to a range of benefits including launching facilities, overnight berthing, refuelling facilities and access to race course outside of 50m of any competitor or mark between start signal and finish of last boat, except when asked to assist by the Race Committee.
- 22.2. Registration for Support boat can be done on the [online portal](#) OR at the RQYS Sailing Office during Registration. Boats that do not have an identifying sticker shall pay \$10.00 to receive an identifying sticker.
- 22.3. Support and spectator boats that do not register will not be permitted to launch or retrieve from RQYS premises, or berth there overnight; the Organising Authority reserves the right to remove such vessels from their premises.
- 22.4. All support/coach boats must have capability of communicating on VHF channel 72, 77 and 16 for the duration of the regatta.

23. TRASH DISPOSAL

- 23.1. Trash may be placed aboard official or support person vessels.

24. [DP][NP] BERTHING

- 24.1. Restrictions may be placed on where vessels may be stored or rigged by the RQYS Sailing or Marina office.
- 24.2. No tie down restraints may penetrate the ground deeper than 300mm due to lawn irrigation systems.

25. [DP] [NP] HAUL-OUT RESTRICTIONS

- 25.1. All boats will be permitted to haul out daily excluding VX Ones which must not be hauled out for the duration of the regatta without the written permission from the Race Committee.
- 25.2. VX Ones will be permitted to berth (and raft up) in Docks 3 – 5 of the VIP docks to the West of the Fuel Dock, overnight on the nights of 08, 09 & 10 December 2023.

26. PRIZES

- 26.1. Prizes will be awarded to 1st, 2nd and 3rd in each division.
- 26.2. Additional prizes may be awarded at the discretion of the Organising Authority.

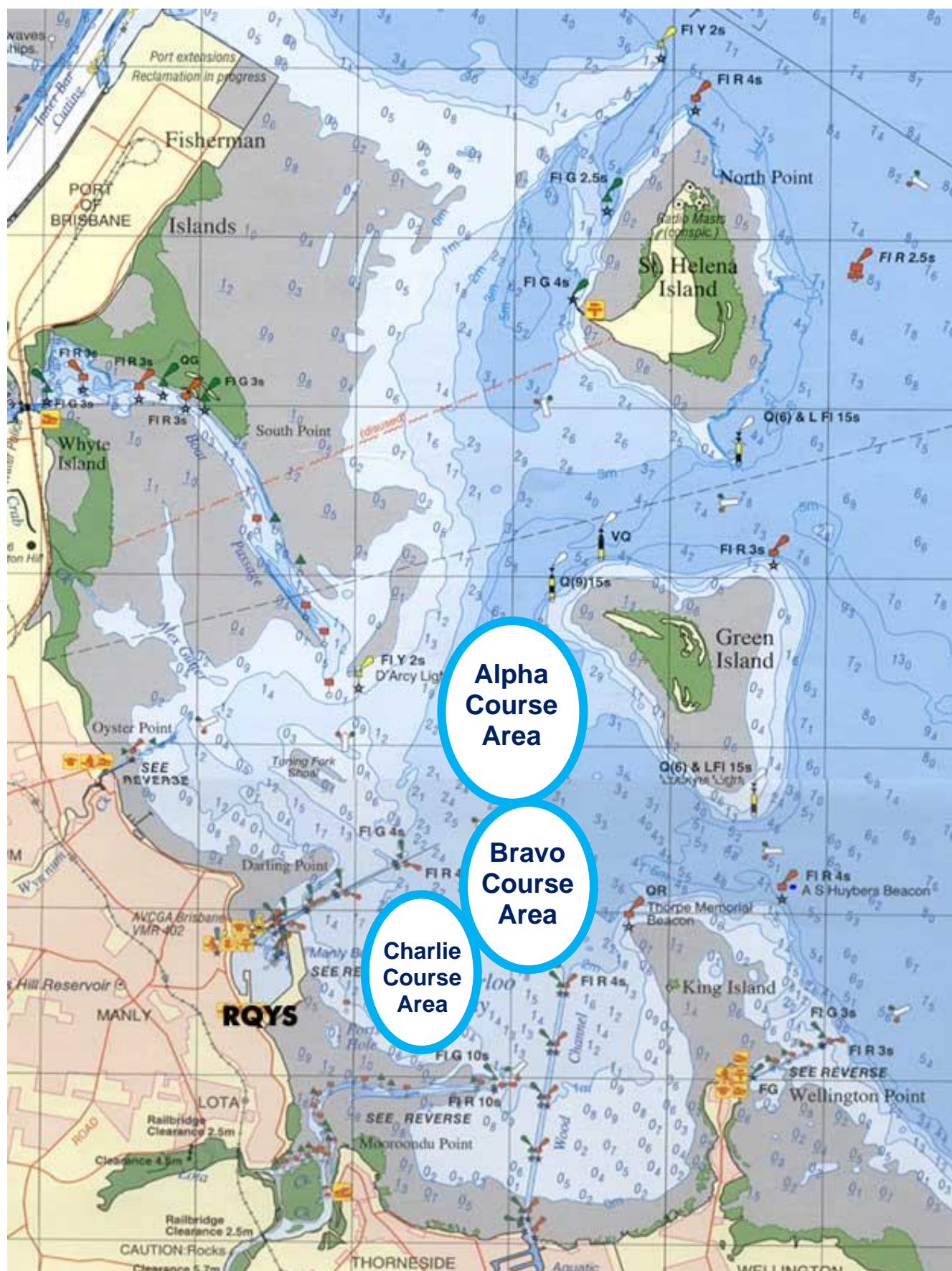
27. RISK STATEMENT

- 27.1. RRS 3 states: 'The responsibility for a boat's decision to participate in a race or to continue to race is hers alone.' By participating in this event each competitor agrees and acknowledges that sailing is a potentially dangerous activity with inherent risks. These risks include strong winds and rough seas, sudden changes in weather, failure of equipment, boat handling errors, poor seamanship by other boats, loss of balance on an unstable platform and fatigue resulting in increased risk of injury. **Inherent in the sport of sailing is the risk of permanent, catastrophic injury or death by drowning, trauma, hypothermia or other causes.**
- 27.2. All participants are required to comply with any safety provisions as mandated under the Racing Rules of Sailing, the Australian Sailing Special Regulations Part 2 for Off The Beach Boats, and any Class Rules that may apply. The Squadron encourages and supports competitors who believe it is appropriate to exceed the above requirements (such as the wearing of helmets, body armor, impact vests, etc.) if they or their guardian believe that conditions and their personal circumstances warrant. All competitor's attention is drawn to the Risk Statement - Section 27 of the Sailing Instructions.

28. INSURANCE

- 28.1. Each participating boat shall be insured with valid third-party liability insurance with a minimum cover of \$10,000,000AUD per incident or the equivalent.

SI ATTACHMENT A



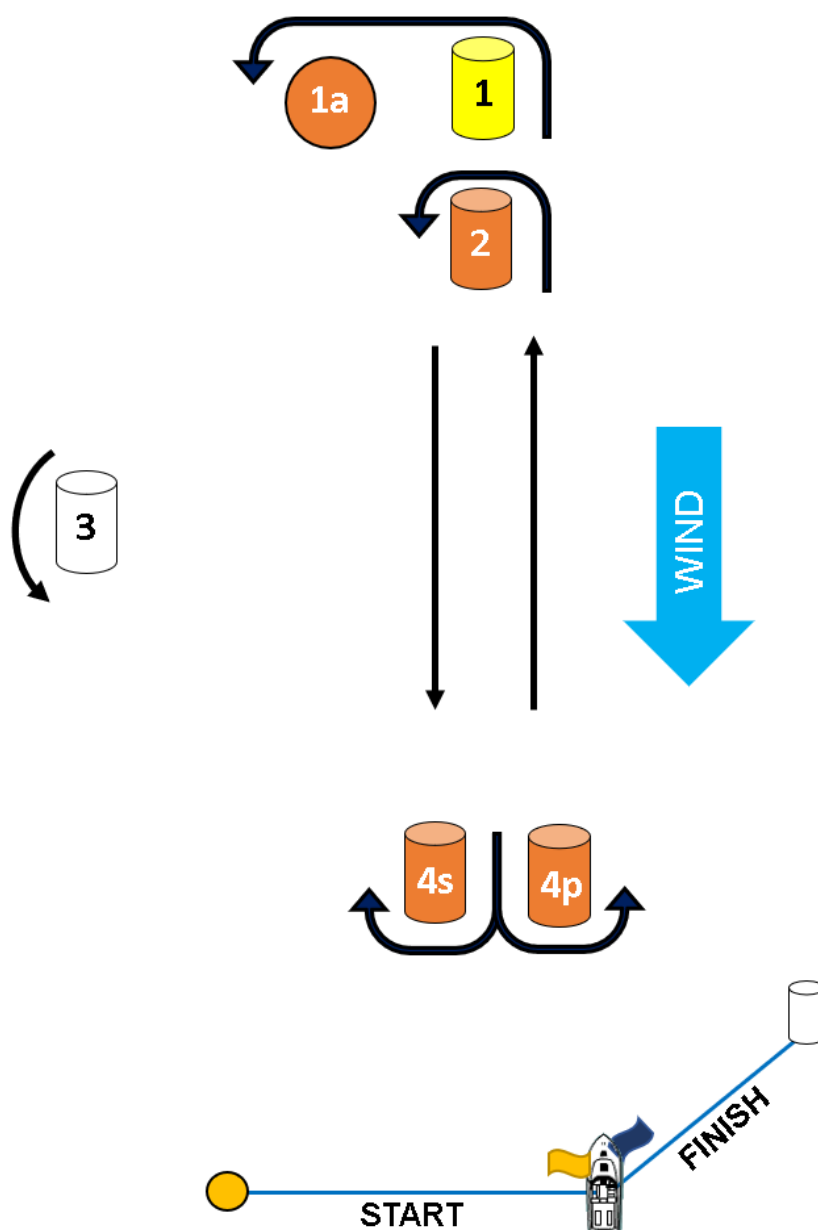
SI ATTACHMENT B

| Class | Class Flag | Target Time (minutes) | Time Limit (minutes) | Finish Window (minutes) | Course Allocation |
|-----------------------------------|--|-----------------------|----------------------|-------------------------|-------------------|
| Ok Dinghy | As per Separate Sailing Instructions | | | | Alpha |
| 29er | Red 29er insignia / white background | 30 | 50 | 10 | Alpha |
| Etchells | White with Blue Class Insignia | 40 | 60 | 15 | Alpha |
| VX One | As per Separate Sailing Instructions | | | | Alpha |
| Nacra 15 | Blue/Black Insignia with White Background | 30 | 50 | 10 | Alpha |
| Hobie 16 | Yellow with Black Class Insignia | 40 | 60 | 15 | Alpha |
| F16 & F 18 | As Per Separate Sailing Instructions | | | | Alpha |
| Monohull Other | Yellow Flag | 40 | 60 | 15 | Alpha |
| Multihull Other | Code Flag 'G' | 40 | 60 | 15 | Alpha |
| Finn | Blue insignia /white background | 40 | 60 | 15 | Bravo |
| ILCA 4 | Red insignia / yellow background | 40 | 60 | 15 | Bravo |
| ILCA 6 | Red insignia / green background | 40 | 60 | 15 | Bravo |
| ILCA 7 | White with Red Class Insignia | 40 | 60 | 15 | Bravo |
| Raceboard & LT | White with Red Bic Techno Insignia | 30 | 45 | 10 | Bravo |
| Optimist Green | White "O" insignia / green background | 30 | 50 | 15 | Charlie |
| Optimist Intermediate/Open | Black "O" insignia / white background | 40 | 60 | 15 | Charlie |
| Flying 11 | Blue Flying 11 insignia / white background | 40 | 60 | 15 | Charlie |
| RS Feva | Code Flag E | 40 | 60 | 15 | Charlie |
| Charlie Mixed | Yellow Flag | 40 | 60 | 15 | Charlie |

SI ATTACHMENT C

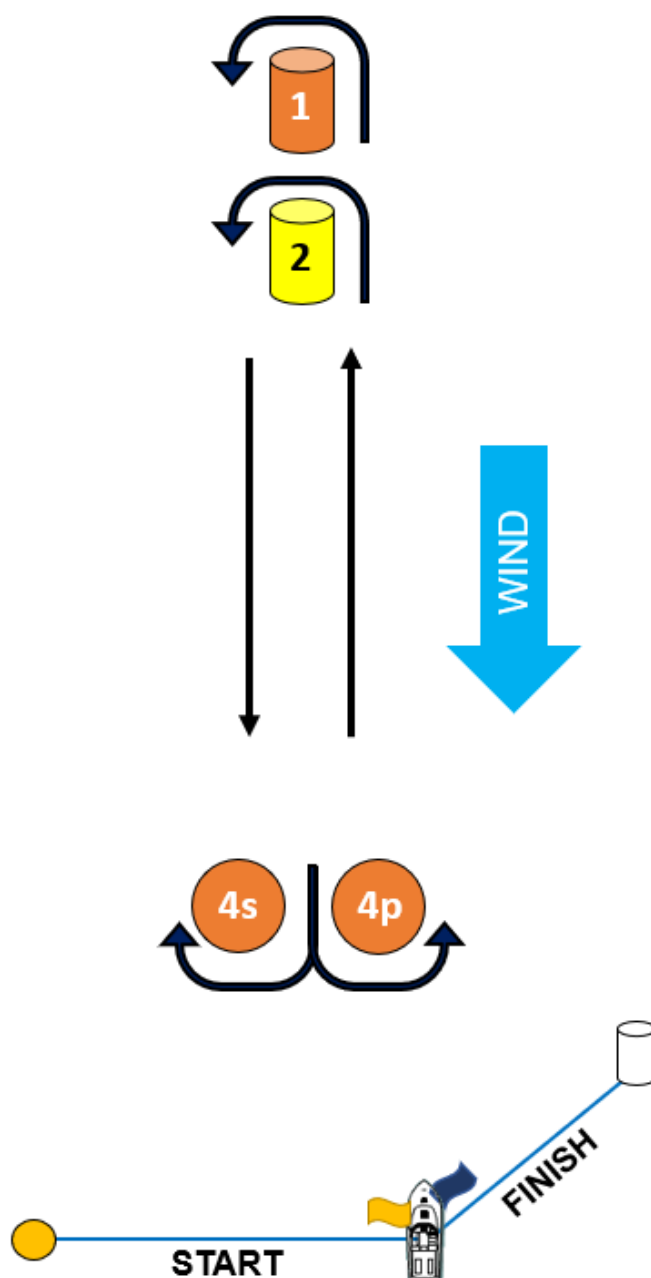
ALPHA COURSE

| CODE | COURSE | MARKS DESCRIPTION |
|------|--|--|
| LA1 | Start – 1 – 1a – 4p – Finish | Marks 1: Yellow Inflatable |
| LA2 | Start – 1 – 1a – 4s/4p – 1 – 1a – 4p – Finish | Mark 2, 4s/4p: Orange Inflatables |
| LA3 | Start – 1 – 1a – 4s/4p – 1 – 1a – 4s/4p – 1 – 1a – 4p – Finish | Start Pin & 1a: Orange teardrop |
| L1 | Start – 2 – 4p – Finish | Mark 3 & Finish Pin: White Inflatable |
| L2 | Start – 2 – 4s/4p – 2 – 4p – Finish | Change Mark: Mark 1: Green Inflatable Mark 2: Purple Inflatable |
| L3 | Start – 2 – 4s/4p – 2 – 4s/4p – 2 – 4p – Finish | |
| T1 | Start – 2 – 3 – 4p – Finish | |
| T2 | Start – 2 – 3 – 4s/4p – 2 – 4p – Finish | |
| T3 | Start – 2 – 3 – 4s/4p – 2 – 4s/4p – 2 – 3 – 4p – Finish | |



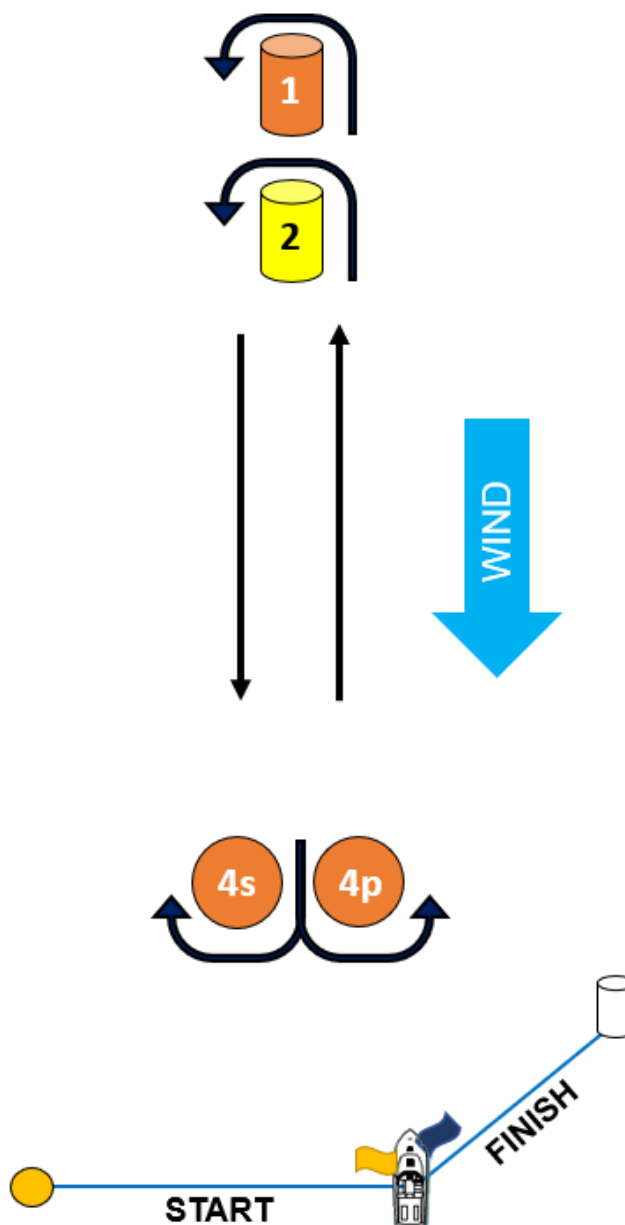
BRAVO COURSE

| CODE | COURSE | MARKS DESCRIPTION |
|------|---|--|
| L1 | Start – 1 – 4p – Finish | Marks 1: Orange Inflatable |
| L2 | Start – 1 – 4s/4p – 1 – 4p – Finish | Mark 2: Yellow Inflatable |
| L3 | Start – 1 – 4s/4p – 1 – 4s/4p – 1 – 4p – Finish | Start Pin & Marks 4s/4p: Orange Teardrop |
| L1a | Start – 2 – 4p – Finish | Finish Pin: White Inflatable |
| L2a | Start – 2 – 4s/4p – 2 – 4p – Finish | Change Mark: Mark 1: Green Inflatable Mark 2: Purple Inflatable |
| L3a | Start – 2 – 4s/4p – 2 – 4s/4p – 2 – 4p – Finish | |



CHARLIE COURSE

| CODE | COURSE | MARKS DESCRIPTION |
|------|---|---|
| L1 | Start – 1 – 4p – Finish | Marks 1: Orange Inflatable |
| L2 | Start – 1 – 4s/4p – 1 – 4p – Finish | Mark 2: Yellow Inflatable |
| L3 | Start – 1 – 4s/4p – 1 – 4s/4p – 1 – 4p – Finish | Start Pin, Marks 4s/4p: Orange Teardrop |
| L1a | Start – 2 – 4p – Finish | Finish Pin: White Inflatable |
| L2a | Start – 2 – 4s/4p – 2 – 4p – Finish | Change Mark: Mark 1: Purple Inflatable Mark 2: Green Flag Mark |
| L3a | Start – 2 – 4s/4p – 2 – 4s/4p – 2 – 4p – Finish | |



SI ATTACHMENT D

Green Fleet - Introductory Rules for Racing

Version 1.02 - July 2021

Some Explanations

Windward and Leeward: The *leeward* side of your boat is the side where your main-sail lies. The *windward* side is the other side.

Port and Starboard tack: You are on *port* or *starboard tack* according to your *windward* side.

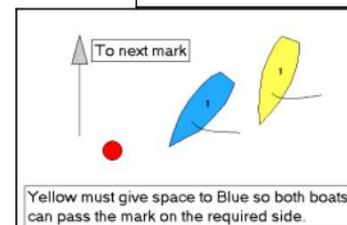
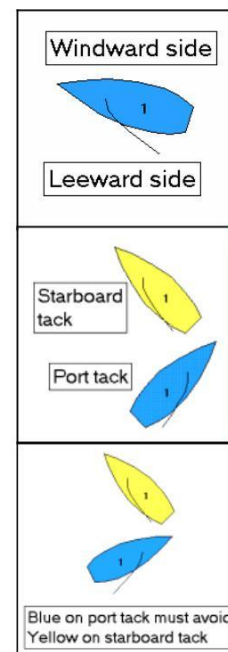
Advisor: A person appointed by the race organizers to assist competitors in understanding the rules and, when appropriate, to penalize a boat.

Basic Rules

1. You must comply with the principles of good sportsmanship.
2. You must try not to collide with another boat.

Rules When Boats Meet

3. When you and the other boat are on opposite *tacks*, if you are on *port tack* you must avoid the boat on *starboard tack*.
4. When you and the other boat are on the same *tack*, you must avoid the other boat
 - (a) if she is in front of you, or
 - (b) if she is on your *leeward* side.
5. After starting, when you and the other boat approach a mark or an object that both boats need to avoid, and the other boat is between you and the mark or other object, you must give her sufficient space to pass it safely on the same side. However, when the boats are on opposite tacks at a windward mark, this rule does not apply.
6. When the other boat is required to avoid you, if you change course, you must give the other boat an adequate opportunity to avoid you.



Other Rules

7. At the starting signal you must be behind the starting line.
8. After the starting signal, you must sail the course described by the race organizers.
9. You must not touch a mark of the course.
10. If you think you or another boat has broken a rule or if you are unclear about the rules at any time during the race, you must describe the incident to the *advisor* after the race. The *advisor* may then add two points to the score of any boat that has broken a rule. If the offence is serious, the *advisor* may refer the matter to the Jury who may deal with the matter as they deem suitable within the spirit of the racing rules of sailing.