



2023-2024 - 51st AUSTRALIAN HOBIE CAT NATIONAL CHAMPIONSHIPS

Series 1: 28th – 31st December 2023

Series 2: 02nd – 05th January 2024

SAILING INSTRUCTIONS

(SI)



Organising Authority

ROYAL QUEENSLAND YACHT SQUADRON LTD

578 Royal Esplanade, Manly, QLD 4179

The notation '[NP]' in a rule of the sailing instructions (SIs) means that a boat may not protest another boat for breaking that rule. This changes RRS 60.1(a).

The notation '[DP]' in a rule of the sailing instructions (SI's) means that a protest committee can award a penalty less than disqualification (including no penalty) at their discretion. This changes Rule 64.2

[SP] denotes a rule for which a standard penalty may be applied by the race committee without a hearing or a discretionary penalty applied by the Protest Committee without a hearing. This changes RRS A5.

1. RULES

- 1.1. Where there is a difference between the Notice of Race (NoR) and the Sailing Instructions (SI) the SI take precedence.
- 1.2. The event is governed by the rules as defined in The Racing Rules of Sailing.
- 1.3. The Australian Sailing Prescriptions and special regulations part 2 apply.
- 1.4. Appendix T – Arbitration will apply.
- 1.5. The current Class Rules of the International Hobie Class Association (IHCA) will apply.
- 1.6. RRS rule 40 will be changes as follows:
Competitors shall wear personal floatation devices whilst afloat, except briefly while changing or adjusting clothing or personal equipment. Wet suits and dry suits are not personal floatation devices.
- 1.7. IHCA Class Rule Penalty Policy shall apply.
- 1.8. Competitors must follow Club Policies (<https://www.rqys.com.au/policiesanddocuments/>)

2. CHANGES TO SAILING INSTRUCTIONS

- 2.1. Any change to the sailing instructions will be posted before 0900 on the day it will take effect, except that any change to the schedule of races will be posted by 2000 on the day before it will take effect.

3. COMMUNICATIONS WITH COMPETITORS

- 3.1. Notices to competitors will be posted on the official notice board located at <https://www.rqys.com.au/sailingnoticeboard/> .
- 3.2. The race office is located at The RQYS Sailing Office located adjacent to the Main Rigging Lawn, telephone 3396 8666, email sailing@rqys.com.au .
- 3.3. [DP] While racing, except in an emergency, a boat shall not make voice or data transmissions and shall not receive voice or data communication that is not available to all boats.

4. CODE OF CONDUCT

- 4.1 [DP] Competitors and support persons shall comply with reasonable requests from race officials.
- 4.2 [DP] Competitors and support persons shall handle any equipment or place advertising provided by the organizing authority with care, seamanship, in accordance with any instructions for its use and without interfering with its functionality.

5. SIGNALS MADE ASHORE

- 5.1. Signals made ashore will be displayed at the official flag pole located at the top of the Eastern Gangway of the Bill Kirby Docks.
- 5.2. When flag AP is displayed ashore, '1 minute' is replaced with 'not less than 45 minutes' in Race Signals AP.

6. SCHEDULE OF RACES

6.1.

Series 1 Schedule

DATE	ACTIVITY	TIME
Wednesday 27 th December 2023	Series 1 & 2 – Registration	4:00 to 5:00pm
Thursday 28 th December 2023	Series 1 – Registration	8:00am to 9:30am
	Series 1 - Briefing	10:00am
	Racing	First Warning not before 11:30am
	Hobie Beer Garden	4pm – 6pm (race finishing dependent)
Friday 29 th December 2023	Racing	First Warning not before 10:00am
	Hobie Beer Garden	4pm – 6pm (race finishing dependent)
Saturday 30 th December 2023	Racing	First Warning Not Before 10:00am
	Hobie Beer Garden	4pm – 6pm (race finishing dependent)
Sunday 31 st December 2023	Racing	First Warning Not Before 10:00am
	Series 1 - Presentation	6pm – 11:45pm

Series 2 Schedule

Monday 1 st January 2024	Series 2 - Registration	4:00pm to 5:00pm
Tuesday 2 nd January 2024	Series 2 – Registration Series 2 – Briefing Racing Hobie Beer Garden	8:00am to 9:30am 10:00am First Warning Not Before 11:30am 4pm – 6pm (race finishing dependent)
Wednesday 3 rd January 2024	Racing Hobie Beer Garden	First Warning Not Before 10:00am 4pm – 6pm (race finishing dependent)
Thursday 4 th January 2024	Racing Hobie Beer Garden	First Warning Not Before 10:00am 4pm – 6pm (race finishing dependent)
Friday 5 th January 2024	Racing Series 2 - Presentation	First Warning Not Before 10:00am Time and location TBC via SMS

- 6.2. To alert boats that a race or sequence of races will begin soon, the orange starting line flag will be displayed with one sound at least five minutes before a warning signal is made.
- 6.3. On the last day of racing for each series no warning signal will be made after 1500 hrs.
- 6.4. A maximum of 14 races are scheduled per series.
- 6.5. No more than four (4) races shall be sailed in one day.
- 6.6. Spectator Boat: The yacht "SV Jaygo" a 17m yacht will be leaving the VIP jetty next to the fuel bowser before racing each day. BYO food and drinks as you will be on the water for all races that day, weather permitting.

7. CLASS FLAGS

7.1. The class flags are:

Class / Division	Class Flag Description
Hobie 14	Purple flag with black insignia.
Hobie 14 Turbo	Purple flag with black insignia
Hobie 16	Yellow flag with Black insignia
Hobie 17	TBA if needed
Hobie 18	Dark Blue flag with Black insignia
Tiger / Wildcat	Pink flag with Black insignia.
Dragoon	TBA if needed

8. RACING AREA

8.1. SI Attachment A shows the location of the racing area.

9. COURSES

- 9.1. The diagram in SI Attachment B shows the courses, including the approximate angles between legs, the order in which marks are to be passed, and the side on which each mark is to be left.
- 9.2. No later than the warning signal, the race committee signal vessel will display the course to be sailed and the approximate compass bearing of the first leg.
- 9.3. Hobie 14 & Hobie 14 Turbo class shall round inner weather mark 'A1', all other classes shall round weather mark 'A' (see SI Attachment B).

10. MARKS

10.1. Marks are as described in SI Attachment B.

11. THE START

- 11.1. The starting line is between a staff displaying an orange flag on the signal vessel at the starboard end and a staff displaying an orange flag on the port-end vessel.
- 11.2. Boats whose warning signal has not been made shall avoid the starting area during the starting sequence for other races.
- 11.3. A boat that does not start within four (4) minutes after her starting signal will be scored Did Not Start without a hearing. This changes RRS A5.1 and A5.2.

12. CHANGE OF THE NEXT LEG OF THE COURSE

- 12.1. To change the next leg of the course, the race committee will lay a new mark (or move the finishing line) and remove the original mark as soon as practicable. When in a subsequent change a new mark is replaced, it will be replaced by an original mark.

13. THE FINISH

- 13.1. The finishing line is between staffs displaying blue flags on the finishing vessel at the port end and starboard vessel.
- 13.2. If course configuration C is used SI 13.1 is changed "The finishing line is between a staff displaying a blue flag on the finishing vessel at the starboard end and the course side of the port end finishing mark."
- 13.3. FINISHING ON THE WATER: When approximately half of the boats in a race have rounded the last mark, the Race Committee may, at its absolute discretion award finishing points (FPA) to boats not yet finished that remain on the course. Boats who are informed of this decision shall immediately follow the directions of the Race Committee. The Race Committee determines the method of finishing and the finish positions awarded to each boat. This changes RRS 28.1,35 and A 4.1

14. PENALTY SYSTEM

14.1. RRS 44.1 is changed so that the Two-Turns Penalty is replaced by the One-Turn Penalty.

15. TIME LIMITS AND TARGET TIMES

15.1. The Target Time, Race Time Limit (see RRS 35), and the Finishing Window are shown in the table below.

Target Time	Race Time Limit	Finishing Window
40 minutes	60 minutes	15 minutes

15.2. The Finishing Window is the time for boats to finish after the first boat sails the course and finishes. Boats failing to finish within the Finishing Window, and not subsequently retiring, penalized or given redress, will be scored Time Limit Expired (TLE) without a hearing. A boat scored TLE shall be scored points for the finishing place one more than the points scored by the last boat that finished within the Finishing Window. This changes RRS 35, A5.1, A5.2 and A10.

15.3. Failure to meet the Target Time will not be grounds for redress. This changes RRS 62.1(a).

16. HEARING REQUESTS

16.1. For each class, the protest time limit is 60 minutes after the last boat [in that class] finishes the last race of the day or the race committee signals no more racing today, whichever is later. The time will be posted on the official notice board.

16.2. Hearing request forms are available from the RQYS Sailing Office.

16.3. Notices will be posted no later than 30 minutes after the protest time limit to inform competitors of hearings in which they are parties or named as witnesses. Hearings will be held at a time and place advised on the hearing notice.

17. SCORING

17.1. One race is required to be completed to constitute a series.

17.1.1. When fewer than 4 races have been completed, a boat's series score will be the total of her race scores.

17.1.2. When from 4 to 9 races have been completed, a boat's series score will be the total of her race scores excluding her worst score.

17.1.3. When 10 or more races have been completed, a boat's series score will be the total of her race scores excluding her two worst scores.

17.1.4. All boat weight, crew weight, and equipment violations will be scored Disqualification Not Excludable (DNE). Whenever possible, competitors should be warned of potential equipment violations on the beach before racing when observed by other competitors, the protest committee, or regatta officials.

18. [NP] SAFETY REGULATIONS

18.1. [SP] All skippers shall SIGN ON before racing each day and SIGN OFF at the earliest possible time after the completion of racing (but not later than the end of protest time). The sign on will be available near the Sailing Office (adjacent the main rigging lawn).

18.2. All Maritime Queensland Aquatic Event conditions must be followed including:

18.2.1. All Participating ships are not to impede power driven vessels traversing Manly Boat Harbour and associated channels.

18.2.2. All Participating ships are to obey the gazetted speed limit in Manly Boat Harbour (6 knots).

18.3. No Spinnakers are to be flown in the Manly Harbour 6-knot area.

18.4. No sailing vessel shall berth on or impeded traffic to/from the RQYS fuel dock with out permission from the RQYS Sailing or Marina Office.

- 18.5. [SP] A boat that retires from a race shall notify the race committee at the first reasonable opportunity.

19. REPLACEMENT OF CREW OR EQUIPMENT

- 19.1. [DP] Substitution of competitors is not allowed without prior written approval of the race committee.
- 19.2. [DP] Substitution of damaged or lost equipment is not allowed unless authorized in writing by the race committee. Requests for substitution shall be made to the committee at the first reasonable opportunity, which may be after the race.

20. EQUIPMENT AND MEASUREMENT CHECKS

- 20.1. A boat or equipment may be inspected at any time for compliance with the class rules, notice of race and sailing instructions.
- 20.2. [DP] When instructed by a race official on the water, a boat shall proceed to a designated area for inspection.

21. OFFICIAL VESSELS

- 21.1. Official vessels will be identified by display of a white flag with back letters 'RC' or red letters 'MEDIA'.

22. [DP] SUPPORT TEAMS

- 22.1. Team leaders, coaches and other support persons shall stay outside areas where boats are racing from the time of the preparatory signal for the first start until all boats have finished or retired or the race committee signals a postponement, general recall or abandonment.

23. TRASH DISPOSAL

- 23.1. Trash may be placed aboard official or support person vessels.

24. [DP][NP] BERTHING

- 24.1. Restrictions may be placed on where vessels may be stored or rigged by the RQYS Sailing or Marina office.
- 24.2. Boats may only be stored on the RQYS rigging lawn for the duration of the regatta & 24hrs before/after the regatta, unless otherwise approved by the OA.
- 24.3. No tie down restraints may penetrate the ground deeper than 300mm due to lawn irrigation systems.

25. PRIZES

25.1. Prizes will be awarded to the following classes depending on the number of entrants:

25.1.1. Series 1:

- Hobie 14 Turbo
- Hobie 16 Open
- Hobie 16 Masters, G Masters, GG Masters
- Hobie 17
- Hobie 18

25.1.2. Series 2:

- Hobie 14 Open
- Hobie 14 Women, Youth, Masters, G Masters, GG Masters & Non-Trapeze
- Hobie 16 Women
- Hobie 16 Youth
- Tiger
- Wildcat
- Dragoon

25.2. Additional prizes may be awarded at the discretion of the Organising Authority.

26. RISK STATEMENT

- 26.1. RRS 3 states: 'The responsibility for a boat's decision to participate in a race or to continue to race is hers alone.' By participating in this event each competitor agrees and acknowledges that sailing is a potentially dangerous activity with inherent risks. These risks include strong winds and rough seas, sudden changes in weather, failure of equipment, boat handling errors, poor seamanship by other boats, loss of balance on an unstable platform and fatigue resulting in increased risk of injury. **Inherent in the sport of sailing is the risk of permanent, catastrophic injury or death by drowning, trauma, hypothermia or other causes.**
- 26.2. All participants are required to comply with any safety provisions as mandated under the Racing Rules of Sailing, the Australian Sailing Special Regulations Part 2 for Off The Beach Boats, and any Class Rules that may apply. The Squadron encourages and supports competitors who believe it is appropriate to exceed the above requirements (such as the wearing of helmets, body armor, impact vests, etc.) if they or their guardian believe that conditions and their personal circumstances warrant. All competitor's attention is drawn to the Risk Statement - Section 26 of the Sailing Instructions.

27. INSURANCE

- 27.1. Each participating boat shall be insured with valid third-party liability insurance with a minimum cover of \$10,000,000AUD per incident or the equivalent.

IHCA SAFETY NOTES TO THE SAILORS:

GENERAL

If wind, wave, or water conditions make you doubtful of your ability to handle the conditions, retire from the race.

TRAPEZE HARNESSSES

Sailors are strongly recommended to use trapeze harnesses with a quick release hookless system or a quick release hook, which meets the ISO 10862 standard.

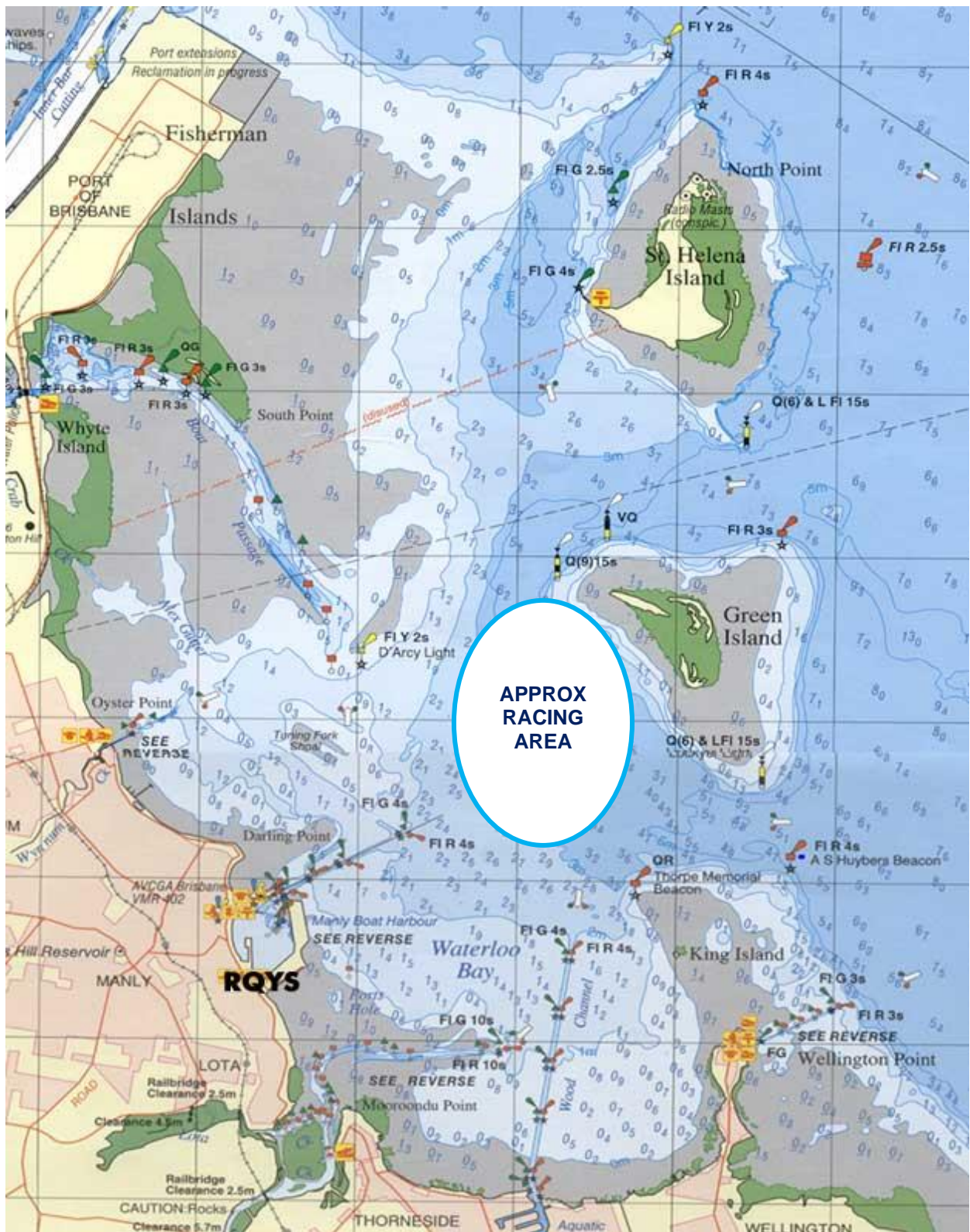
HELMETS

If sailors wish to wear head protection it is strongly recommended, they use helmets of European standard EN1385.

ELECTRICAL POWER LINES – AVOID!!!

Before raising the mast, and always while sailing, check for and avoid low overhead electrical power lines. If you see a power line, AVOID IT! A MAST COMING IN CONTACT OR EVEN NEAR AN ELECTRICAL POWER LINE CAN CAUSE SERIOUS INJURY OR DEATH TO PEOPLE ON OR TOUCHING THE BOAT

SI ATTACHMENT A



SI ATTACHMENT B

Note SI 9.3 “9.3. Hobie 14 & Hobie 14 Turbo class shall round inner weather mark ‘A1’, all other classes shall round weather mark ‘A’ (see SI Attachment B).”.

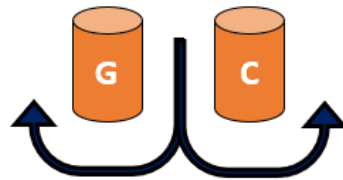
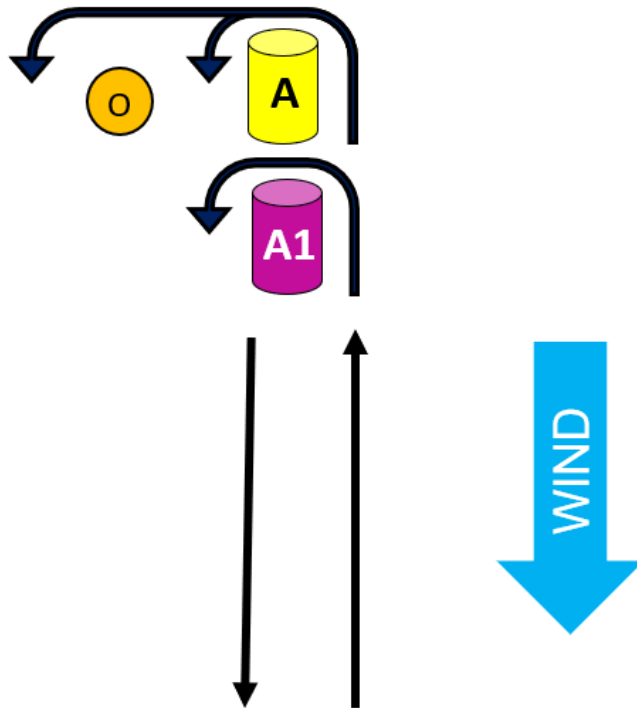
"B" MARK LOCATION: The Race Committee will endeavour to locate "B" Mark, the reaching mark, at either the windward or leeward end of the course approximately 90 to 105 degrees abeam of the windward or leeward mark.

IHCA Standard Courses				
No	COURSE	Finish	Options	MARKS DESCRIPTION
1	(S) – A/A1 – C – A/1A	(F) Downwind	1G 1O 1GO	Mark A: Yellow Inflatable
2	(S) – A/A1 – C – A/A1 – C – A/A1	(F) Downwind	2G 2O 2GO	Mark A1 & B: Purple Inflatable
3	(S) – A/A1 – C – A/A1 – B – C	(F) Upwind	3O	Marks G & C: Orange Inflatables
4	(S) – A/A1 – C – A/A1 – B – C – A/A1	(F) Downwind	4O	Mark O: Orange Teardrop
5	(S) – A/A1 – C	(F) Upwind	5G 5O 5GO	Start Pin: RIB Displaying Orange Flag
6	(S) – A/A1 – C – A/A1 – C	(F) Upwind	6G 5O 6GO	Finish Pin: RIB Displaying Blue Flag
7	(S) – A/A1 – C – A/A1 – B – C – A/A1 – C	(F) Upwind	7O	Change Mark: Green Inflatable
S = Start A = Weather Mark B = Reaching Mark C = Leeward Mark G = Gate F = Finish O = Offset				

The Following diagrams are examples of course illustrations for course Configurations A, B & C.

Course Configuration A

(to be used with course 1 and 2 only)

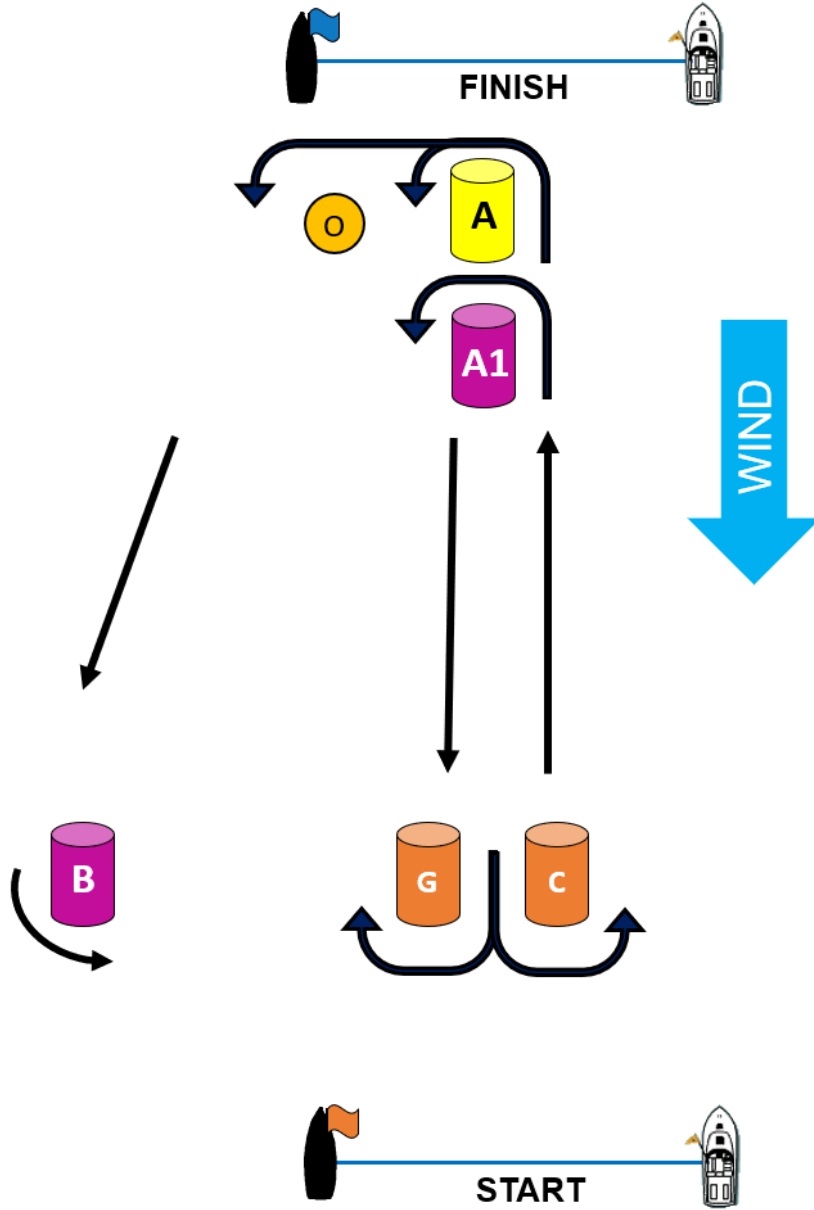


Mark O & Mark G are options that may be used by the Race Committee

(OR)

Course Configuration B

(may be used with all courses except 1 and 2)

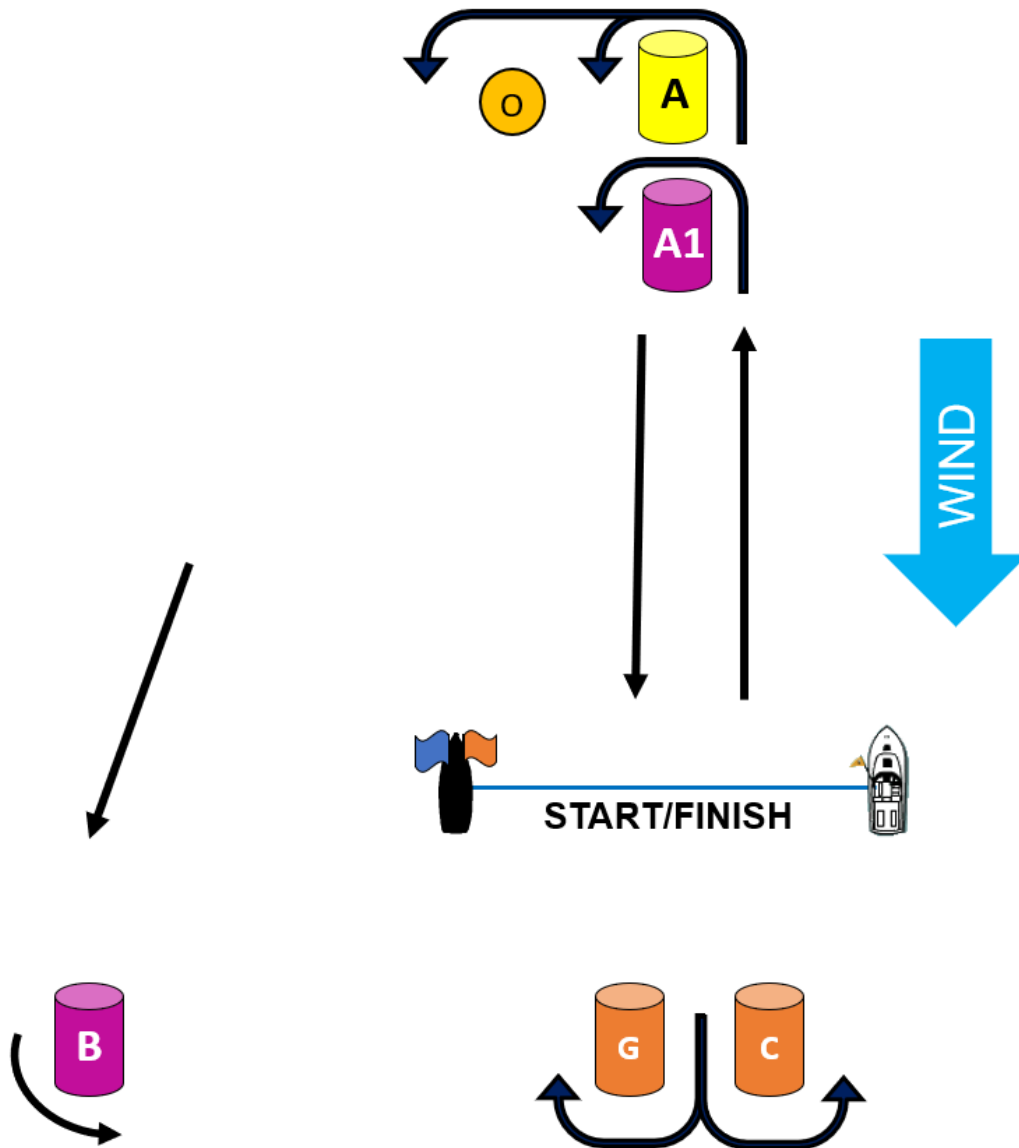


Mark O & Mark G are options that may be used by the Race Committee

(OR)

Course Configuration C

(may be used with all courses)



Mark O & Mark G are options that may be used by the Race Committee