



OFF THE BEACH FROSTBITE SERIES

20TH May 2023
03rd June 2023
17th June 2023
08th July 2023

NOTICE OF RACE (NoR)

ORGANISING AUTHORITY

ROYAL QUEENSLAND YACHT SQUADRON LTD
578 Royal Esplanade, Manly, QLD 4179

The notation '[NP]' in a rule means that a boat may not protest another boat for breaking that rule. This changes RRS 60.1(a).

The notation '[DP]' in a rule of the sailing instructions (SI's) means that a protest committee can award a penalty less than disqualification (including no penalty) at their discretion. This changes Rule 64.2

1. RULES

- 1.1 The event is governed by the rules as defined in The Racing Rules of Sailing.
- 1.2 The prescriptions and special regulations of Australian Sailing (AS) Part 2 will apply ([See Here](#)).
- 1.3 The applicable class rules will apply.
- 1.4 Appendix P may apply.
- 1.5 The RQYS Constitution, Club Participation Rules, House Rules and Codes of Conduct will apply.
- 1.6 Failure to SIGN ON shall result in that boat being penalised three (3) points for the first race of the session (but not worse than DNF). Failure to SIGN OFF shall result in that boat being penalised three (3) points for the last race of the session (but not worse than DNF). Penalties shall be applied without a hearing. This changes RRS 63.1 and A5.

2. SAILING INSTRUCTIONS

- 2.1 The sailing instructions will be available after 1200 on 18th May 2023 at [Online Notice Board](#).

3. COMMUNICATION

- 3.1 The online official notice board is located at <https://www.rqys.com.au/sailingnoticeboard/> .
- 3.2 [DP] While racing, except in an emergency, a boat shall not make voice or data transmissions and shall not receive voice or data communication that is not available to all boats.

4. ELIGIBILITY AND ENTRY

- 4.1 Series entry is open to dinghies, boards, OTB Multihulls, VXOne and Etchells owned by financial members of the Royal Queensland Yacht Squadron.
- 4.2 Skippers and Crew with seasons entries are required to be financial members of the Royal Queensland Yacht Squadron in the appropriate category.
- 4.3 Casual Entries can be lodged in advance online or, can be lodged on the day of racing before first warning signal of the day, by seeing the Sailing Office on the deck adjacent to the Main Rigging Lawn.
- 4.4 Casual entrants are required to be a member of Australian Sailing by having a club membership with a yacht or sailing club, or by obtaining an [RQYS Day Pass / Sail Pass](#).
- 4.5 All entrants including skippers and crew must be a member of Australian Sailing (AS) at both the time of entry and for the duration of the event. Check your AS Membership Number here: <https://www.sailing.org.au/member-finder/> .
- 4.6 Indicative list of classes/divisions course allocations:
 - 4.6 (a) Northern Course: 29ers, 49ers, Skiffs, VXONE, Nacra 15, Hobie 16, Etchells, Northern Course Mixed.
 - 4.6 (b) Southern Course: Boards, Finns, OK's, All lasers, Flying 11, Optimist Intermediate & Open, Sabot, Open Skiff, Southern Course Mixed.
- 4.7 Class with fewer than five (5) entries shall race in the mixed Division of that course.
- 4.8 Boats may enter the event by registering online at <https://www.rqys.com.au/frostbite2023/> .
- 4.9 To be considered an entry in the event, a boat shall complete all registration requirements and pay all fees.
- 4.10 Late entries will be accepted at the discretion of the Organising Authority.

5. FEES

5.1 Entry fees are as follows:

- (a) \$75 series entry (RQYS members only)
- (b) \$25 Casual entry – RQYS Member
- (c) \$30 Casual entry – Non RQYS Member

5.2 Any Refunds will be as per the RQYS Sailing Refunds Policies (<https://www.rqys.com.au/policiesanddocuments/>).

6. ADVERTISING

6.1 Boats may be required to display advertising chosen and supplied by the organizing authority.

7. SCHEDULE

7.1 Dates of racing:

Date	Event	Time/First Warning
20 th May 2023	Northern Course	Not Before 1300 hrs
03 rd June 2023	Southern Course	Not Before 1330 hrs
17 th June 2023		
08 th July 2023		

7.2 There will be a maximum of two (2) races per day.

7.3 No warning signal will be made after 1530 hrs.

8. EQUIPMENT INSPECTION

8.1 Boats may be inspected at any time for compliance with the class rules and Sailing Instructions.

8.2 On the water, a boat can be instructed by a race committee equipment inspector, safety auditor or measurer to proceed immediately to a designated area for inspection.

9. VENUE

9.1 NoR Attachment A shows the plan of the event venue.

9.2 NoR Attachment B shows the location of the racing areas.

10. COURSES

10.1 NoR Attachment C shows the planned the courses.

11. PENALTY SYSTEM

11.1 For the skiffs and multihulls, RRS 44.1 is changed so that the Two-Turn Penalty is replaced by a One-Turn Penalty.

11.2 A boat which Does Not Compete (DNC) in a race shall be scored the number competitors within the fleet at the starting area, plus an additional three (3) points. This changes RRS A9.

12. SCORING

12.1 Three (3) races are required to be completed to constitute a series

12.2 (a) When fewer than four (4) races have been completed, a boat's series score will be the total of her race scores

12.2 (b) When from four (4) to six (6) races have been completed, a boat's series score will be the total of her race scores excluding her worst score.

12.2 (c) When from seven (7) to eight (8) races have been completed, a boat's series score will be the total of her race scores excluding her two worst score.

13. RISK STATEMENT

13.1 RRS 3 states: 'The responsibility for a boat's decision to participate in a race or to continue to race is hers alone.' By participating in this event each competitor agrees and acknowledges that sailing is a potentially dangerous activity with inherent risks. These risks include strong winds and rough seas, sudden changes in weather, failure of equipment, boat handling errors, poor seamanship by other boats, loss of balance on an unstable platform and fatigue resulting in increased risk of injury. **Inherent in the sport of sailing is the risk of permanent, catastrophic injury or death by drowning, trauma, hypothermia or other causes.**

14. INSURANCE

14.1 Each participating boat shall be insured with valid third-party liability insurance with a minimum cover of \$10,000,000AUD per incident or the equivalent.

15. PRIZES

15.1 Prizes will be awarded to 1st, 2nd and 3rd in class/division for which 5 or more entries are received.

16. FURTHER INFORMATION

16.1 For further information please contact:
RQYS Sailing: 07 3396 8666 / sailing@rqys.com.au
578 Royal Esplanade MANLY QLD 4179 AUS
www.rqys.com.au

LOCATION INFORMATION

Regatta Website	View the regatta website to access Sailing Instructions, Entry, Amendments and more
Accommodation:	Ample and varied accommodation is available in the local area. Early bookings are recommended. The Manly Marina Cove Motel is located on the grounds of RQYS – www.manlymarinacove.com Limited camping facilities may be available in the grounds of RQYS.
Access to RQYS:	RQYS Reception is available to assist with access between the hours of 7am and 7pm.

RQYS DIRECTORY

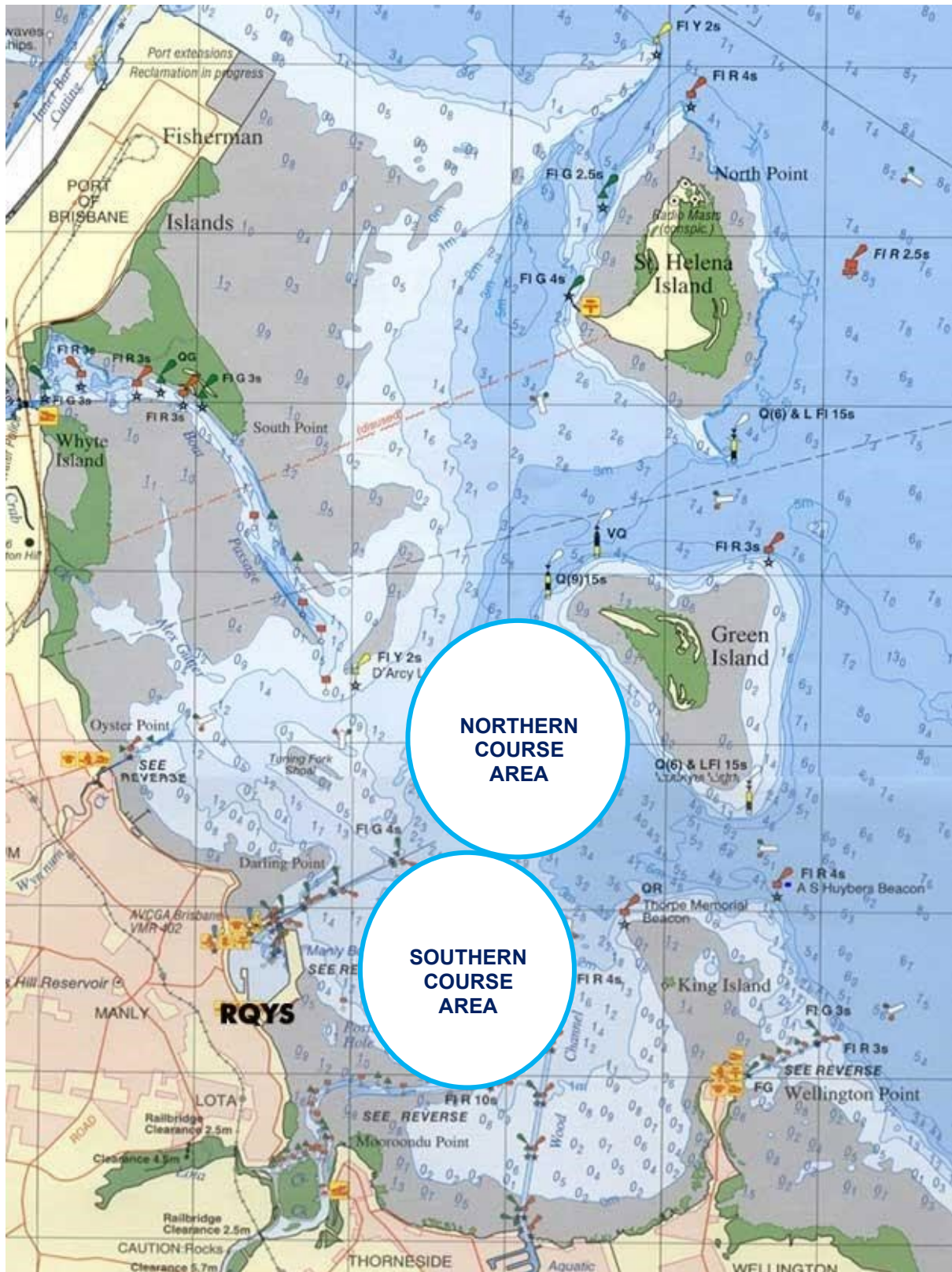


- 1** RQYS CLUBHOUSE
Reception, Bar, Cafe, Restaurant, Auditorium, Commodore's Lounge, Girdis Room, Flags Room
- 2** MARINA & SAILING OFFICE
- 3** YACHTING QUEENSLAND
- 4** MANLY MARINA COVE MOTEL
- 5** WINDSURFING CENTRE OF EXCELLENCE
- 6** MARINE RADIO MORETON BAY
- 7** THE BAY LOOKOUT
- 8** EASTERN BEACH
- 9** DAVENPORT DRIVE LOOKOUT
- 10** BILL KIRBY JETTY
- 11** FUEL WHARF & LAND FUEL
- 12** GYM
- 13** TRAVELIFT & SLEWING CRANE
- 14** SLIPWAY 1
- 15** SLIPWAY 2
- 16** STORAGE SHEDS
- 17** QUEENSLAND MARINE TRAINING SERVICES
- 18** QUEENSLAND MARINE TRAINING SERVICES
- 19** UNOCCUPIED TRADES SPACE
- 20** DAVID GLENN BOAT BUILDERS
- 21** ANDREW WOODFORTH MARINE
- 22** SEADOG MARINE
- 23** JSA MARINE
- 24** PROFESSIONAL BOAT CARE
- 25** ELECTECH INDUSTRIES
- 26** UNOCCUPIED TRADES SPACE
- 27** DAVID'S CUSTOM TRIMMERS
- 28** MULTIHULL CENTRAL
- 29** GREEN MARINE
- 30** SUPERIOR YACHT SOLUTIONS
- 31** ACADEMY RIGGING LAWN
- 32** MAIN RIGGING LAWN
- 33** RIGGING LAWN 2
- 34** RIGGING LAWN 3
- 35** RIGGING LAWN 4
- 36** RIGGING LAWN 5
- 37** CAMPING AREA
- 38** PUBLIC ACCESS RAMP
- 39** SAILING ACADEMY RAMP
- 40** MAIN LAUNCHING RAMP
- 41** SLIPWAY RAMP
- 42** RAMP 4
- 43** PUBLIC CAR PARK
- 44** MOTEL CAR PARK
- 45** MEMBERS CAR PARK



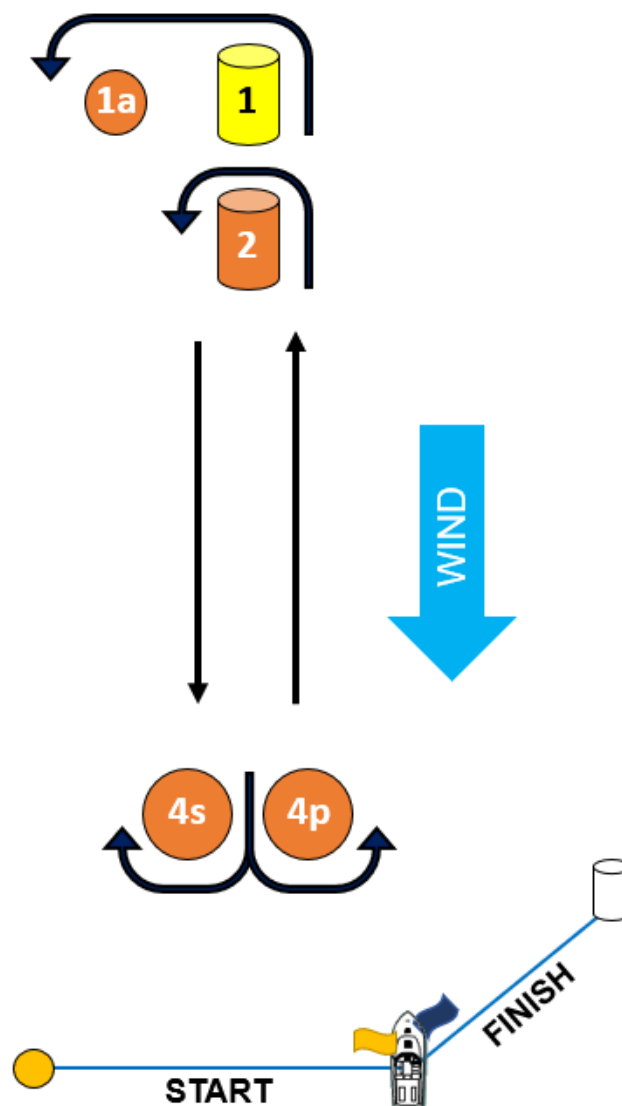
NoR Attachment B

RACING AREAS



NoR Attachment C – Northern & Southern Course(s)

Course: Windward / Leeward		
CODE	COURSE	MARKS DESCRIPTION
LA1	Start – 1 – 1a – 4p – Finish	Marks 1: Yellow Inflatable
LA2	Start – 1 – 1a – 4s/4p – 1 – 1a – 4p – Finish	Mark 2: Orange Inflatables
LA3	Start – 1 – 1a – 4s/4p – 1 – 1a – 4s/4p – 1 – 1a – 4p – Finish	Start Pin, 4s/4p & 1a: Orange Teardrop
L1	Start – 2 – 4p – Finish	Finish Pin: White Inflatable
L2	Start – 2 – 4s/4p – 2 – 4p – Finish	Change Mark: Mark 1: Green Inflatable
L3	Start – 2 – 4s/4p – 2 – 4s/4p – 2 – 4p – Finish	



Course: Trapezoid

CODE	COURSE	MARKS DESCRIPTION
I2	Start – 1 – 4s/4p – 1 – 2 – 3p – 5 - Finish	Marks 1, 2: Yellow Inflatables Marks 1a & 2a: Orange Inflatables 3s/3p & 4s/4p: Purple Inflatables Start pin: Orange Teardrops Finish pin: White Inflatable Change Mark: Green Inflatable
I3	Start – 1 – 4s/4p – 1 – 4s/4p – 1 – 2 – 3p – 5 – Finish	
I2a	Start – 1a – 4s/4p – 1a – 2a – 3p – 5 - Finish	
I3a	Start – 1a – 4s/4p – 1a – 4s/4p – 1a – 2a – 3p – 5 - Finish	
O1	Start – 1 – 2 – 3p – 5 - Finish	
O2	Start – 1 – 2 – 3s/3p – 2 – 3p – 5 - Finish	
O3	Start – 1 – 2 – 3s/3p – 2 – 3s/3p – 2 – 3p – 5 - Finish	
O1a	Start – 1a – 2a – 3p – 5 – Finish	
O2a	Start – 1a – 2a – 3s/3p – 2a – 3p – 5 - Finish	
O3a	Start – 1a – 2a – 3s/3p – 2a – 3s/3p – 2a – 3p – 5 - Finish	

