



# Queensland Youth Week Regatta

## 29 June – 02 July 2023

### Notice of Race (NoR)

Organising Authority (OA)  
**The Royal Queensland Yacht Squadron**  
578 Royal Esplanade Manly Queensland 4179 | (07) 3396 8666 | [sailing@rqys.com.au](mailto:sailing@rqys.com.au) |  
[www.rqys.com.au](http://www.rqys.com.au)

*The notation '[NP]' in a rule means that a boat may not protest another boat for breaking that rule. This changes RRS 60.1(a).*

*The notation '[DP]' in a rule means that the penalty for a breach of the rule may, at the discretion of the protest committee be less than disqualification. This changes Rule 64.2*

#### 1. RULES

- 1.1 The regatta will be governed by the rules as defined in the current Racing Rules of Sailing, with rule changes as per the Sailing Instructions and Appendix B applying to windsurfing classes.
- 1.2 The Special Regulations of Australian Sailing Part 2 will apply.
- 1.3 The applicable class rules will apply.
- 1.4 If there is a conflict between languages, the English text will take precedence.
- 1.5 RRS Appendix T - Arbitration shall apply.
- 1.6 RRS Appendix P – Shall Apply to boats on Bravo & Charlie Course.
- 1.7 Sailors in the Nacra 15 class shall wear a suitable helmet at all times while racing.
- 1.8 Competitors must follow RQYS Club Policies (<https://www.rqys.com.au/policiesanddocuments/>)

#### 2. SAILING INSTRUCTIONS

- 2.1 The sailing instructions will be available after 1200 on at 24/06/2023.  
<https://www.rqys.com.au/2023-qlid-youthweek/> .

#### 3. COMMUNICATION

- 3.1 The online official notice board is located at <https://www.rqys.com.au/sailingnoticeboard/>.
- 3.2 [DP][NP] While racing, except in an emergency, a boat shall not make voice or data transmissions and shall not receive voice or data communication that is not available to all boats.

#### 4. ELIGIBILITY AND ENTRY

- 4.1 The event is open to all boats of the World Sailing preferred youth classes as well as selected youth and junior nationally recognized classes, with a minimum of five (5) entries.
- 4.2 Non – exclusive indicative list of classes:  
Alpha Course (29er, 420, Hobie 16 and Nacra 15)  
Bravo Course (125, Flying 11, Laser 4.7, Laser Radial, Raceboard and Techno Windsurfing)  
Charlie Course (O'pen Skiff, Sabot, Optimist (Green, Intermediate, and open divisions))

- 4.3 All competitors shall be **under 23 years** on the date of 31 December 2023.
- 4.4 All entrants including skippers and crew must be a member of Australian Sailing (AS) at both the time of entry and for the duration of the event. Check your AS Membership Number here: <https://www.sailing.org.au/member-finder/>.
- 4.5 Boats may enter the event by registering online at <https://www.rqys.com.au/2023-qld-youthweek/> by 25<sup>th</sup> June 2023.
- 4.6 To be considered an entry in the event, a boat shall complete all registration requirements and pay all fees.
- 4.7 Late entries will be accepted at the discretion Organising Authority.

## 5. FEES

- 5.1 Required fees are as follows:

### **Early-bird Entry Fee (up to 2359 hours on 18 June 2023)**

Single Handed Classes \$200.00

Double Handed Classes \$245.00

### **Standard Entry Fee (as of 0000 hours on 19 June 2023)**

Single Handed Classes \$240.00

Double Handed Classes \$285.00

### **Late Entry Fee (as of 28<sup>th</sup> June 2023)**

Single Handed Classes \$290.00

Double Handed Classes \$335.00

### **Support/Coach Boat Registration (Compulsory, includes Berthing)**

All boats \$20.00

Registration can be done online here:

<https://www.revolutionise.com.au/rqys/eventsregister/187542/>

- 5.2 Any Refunds will be as per the RQYS Sailing Refunds Policies (<https://www.rqys.com.au/policiesanddocuments/>).

## 6. [NP][DP] ADVERTISING

- 6.1 Boats may be required to display advertising chosen and supplied by the organizing authority.

## 7. SCHEDULE

Date	Event	Time/First Warning
Wednesday 28 June 2023	Registration at the Regatta Office near Main Lawn	1000 – 1600 hrs
Thursday 29 June 2023	Registration at the Regatta Office near Main Lawn	0800 hrs – 1059hrs
	Compulsory Competitors Meeting on Ceremonial Lawn	1100 hrs
	Racing – Charlie Course First Warning Signal	1230 hrs
	– Bravo Course First Warning Signal	1300 hrs
	– Alpha Course First Warning Signal	1330 hrs
Friday 30 June 2023 & Saturday 01 July 2023	Racing – Alpha Course First Warning Signal	1000 hrs
	– Bravo Course First Warning Signal	1030 hrs
	– Charlie Course First Warning Signal	1100hrs
Sunday 02 July 2023	Racing – Charlie Course First Warning Signal	1000 hrs
	– Bravo Course First Warning Signal	1030 hrs
	– Alpha Course First Warning Signal	1100hrs
	Sausage Sizzle on Main Rigging Lawn	60 minutes after last boat finishes
	Presentation on the Ceremony Lawn	90 minutes after the last boat finishes

- 7.1 On the last scheduled day of racing no warning signal will be made after 1530.
- 7.2 A maximum of 3 races will be sailed on 29<sup>th</sup> June & 2<sup>nd</sup> July and a maximum of 4 races will be sailed on 30<sup>th</sup> June & 1<sup>st</sup> July.
- 7.3 A maximum of ten (14) races are scheduled for the regatta.

## 8. EQUIPMENT INSPECTION

- 8.1 Boats may be inspected at any time.

## 9. VENUE

- 9.1 NoR Attachment A shows the location of the regatta harbour.
- 9.2 NoR Attachment B shows the location of the racing areas.

## 10. COURSES

- 10.1 The course(s) to be sailed will be detailed in the Sailing Instructions

## 11. PENALTY SYSTEM

- 11.1 For all classes on Alpha Course RRS 44.1 is changed so that the Two-Turns Penalty is replaced by the One-Turn Penalty.

## 12. SCORING

- 12.1 Three (3) races are required to be completed to constitute a series
- 12.2 (a) When fewer than 4 races have been completed, a boat's series score will be the total of her race scores.
- 12.2 (b) When from 4 to 8 races have been completed, a boat's series score will be the total of her race scores excluding her worst score.

### 13. [NP][DP] SUPPORT PERSON VESSELS

- 13.1 Coaches supporting athletes at the event shall register with the Organising Authority [online](#) prior to registration close (28/06/2023). Registration entitles coaches to a range of benefits including, overnight berthing, refuelling facilities, communication with athletes and access to race course outside of 50m of any competitor or mark between start signal and finish of last boat, except when asked to assist by the Race Committee.
- 13.2 Registration shall be completed by registering the support boat/s online, and then collecting a numbered and coloured sticker from the Regatta Office upon arrival, prior to launching the support boat.
- 13.3 Support and spectator boats that do not register shall not be permitted to launch or retrieve from RQYS premises, or berth there overnight; the Organising Authority reserves the right to remove such vessels from their premises.
- 13.4 All support/coach boats must have the capability to communicate with the Race Committee on VHF 72 and 77 throughout the regatta.
- 13.5 Support vessels must remain in their assigned places in the harbour.
- 13.6 All Support Vessels shall use the Public ramp adjacent to the club for launching and retrieving between 1100hrs 28 June – and 1600hrs 2 July (See NoR “Location Information” – Access to RQYS for more information).

### 14. CHARTERED OR LOANED BOATS

- 14.1 A chartered or loaned boat may carry national letters or a sail number in contravention of her class rules, provided that the race committee has approved her sail identification before the first race.

### 15. BERTHING

- 15.1 [NP][DP] Boats shall be kept in their assigned places as follows (See Attachment
- 15.2 C for locations):
  - 15.2 (a) Charlie Course boats are to be on “Main Lawn” closest to the cafe.
  - 15.2 (b) Bravo Course boats are to be on “Lawn 3”.
  - 15.2 (c) Alpha Course boats are to be on “Lawn 2”.
  - 15.2 (d) Alpha Course Catamarans may be on “Main Lawn” closest to “Lawn 2”
  - 15.2 (e) Windsurfers are to be on “Windsurfing Lawn” (See Attachment D & E)

### 16. RISK STATEMENT

- 16.1 RRS 3 states: ‘The responsibility for a boat’s decision to participate in a race or to continue to race is hers alone.’ By participating in this event each competitor agrees and acknowledges that sailing is a potentially dangerous activity with inherent risks. These risks include strong winds and rough seas, sudden changes in weather, failure of equipment, boat handling errors, poor seamanship by other boats, loss of balance on an unstable platform and fatigue resulting in increased risk of injury. **Inherent in the sport of sailing is the risk of permanent, catastrophic injury or death by drowning, trauma, hypothermia or other causes.**

### 17. INSURANCE

Each participating boat shall be insured with valid third-party liability insurance with a minimum cover of \$10,000,000AUD per incident or the equivalent.

### 18. PRIZES

- 18.1 Prizes will be awarded to 1<sup>st</sup>, 2<sup>nd</sup> and 3<sup>rd</sup> in each class/division for which 5 or more entries are received.
- 18.2 Single-handed Junior classes (Charlie course) shall be awarded separate Male/Female podiums in each class.
- 18.3 In double-handed classes, podiums shall be awarded Overall with a separate 1<sup>st</sup> place awarded to the first opposite gendered skipper.
- 18.4 Other prizes may be awarded at the discretion of the Organising Authority.

## 19. FURTHER INFORMATION

19.1 For further information please contact:

RQYS Sailing: 07 3396 8666 / [sailing@rqys.com.au](mailto:sailing@rqys.com.au)

578 Royal Esplanade MANLY QLD 4179 AUS

[www.rqys.com.au](http://www.rqys.com.au)

---

## LOCATION INFORMATION

### [Regatta Website](#)

View the regatta website to access Sailing Instructions, Entry, Support/Coach Boat Registration, Amendments and more

### Accommodation:

Ample and varied accommodation is available in the local area. Early bookings are recommended.

The Manly Marina Cove Motel is located on the grounds of RQYS – [www.manlymarinacove.com](http://www.manlymarinacove.com)

Limited [camping](#) facilities **may** be available in the grounds of RQYS.

### Access to RQYS:

Drop off (Wednesday 28<sup>th</sup>, Thursday 29<sup>th</sup> Morning) and pick up (Sunday 09<sup>th</sup>) will be through the main gate, access will be from security stationed just before the main gate.

Overflow Vehicle Parking shall be the public car park adjacent to the club.

Pedestrian Gate pin code access will be available for the duration of the regatta and will be sent out to all competitors prior to the first day.

Registered Support Vessel are to launch on the Public Ramp adjacent to the club, Registered Support Vessel Trailers can then be stored in the designated area inside the club through the main gate. – Registered Support Vessels will be emailed more information on this.

# Attachment A

# RQYS DIRECTORY



- 1** RQYS CLUBHOUSE  
Reception, Bar, Cafe, Restaurant, Auditorium, Commodore's Lounge, Girdis Room, Flags Room
- 2** MARINA & SAILING OFFICE
- 3** YACHTING QUEENSLAND
- 4** MANLY MARINA COVE MOTEL
- 5** WINDSURFING CENTRE OF EXCELLENCE
- 6** MARINE RADIO MORETON BAY
- 7** THE BAY LOOKOUT
- 8** EASTERN BEACH
- 9** DAVENPORT DRIVE LOOKOUT
- 10** BILL KIRBY JETTY
- 11** FUEL WHARF & LAND FUEL
- 12** GYM
- 13** TRAVELIFT & SLEWING CRANE
- 14** SLIPWAY 1
- 15** SLIPWAY 2
- 16** STORAGE SHEDS
- 17** QUEENSLAND MARINE TRAINING SERVICES
- 18** QUEENSLAND MARINE TRAINING SERVICES
- 19** UNOCCUPIED TRADES SPACE
- 20** DAVID GLENN BOAT BUILDERS
- 21** ANDREW WOODFORTH MARINE
- 22** SEADOG MARINE
- 23** JSA MARINE
- 24** PROFESSIONAL BOAT CARE
- 25** ELECTECH INDUSTRIES
- 26** UNOCCUPIED TRADES SPACE
- 27** DAVID'S CUSTOM TRIMMERS
- 28** MULTIHULL CENTRAL
- 29** GREEN MARINE
- 30** SUPERIOR YACHT SOLUTIONS
- 31** ACADEMY RIGGING LAWN
- 32** MAIN RIGGING LAWN
- 33** RIGGING LAWN 2
- 34** RIGGING LAWN 3
- 35** RIGGING LAWN 4
- 36** RIGGING LAWN 5
- 37** CAMPING AREA
- 38** PUBLIC ACCESS RAMP
- 39** SAILING ACADEMY RAMP
- 40** MAIN LAUNCHING RAMP
- 41** SLIPWAY RAMP
- 42** RAMP 4
- 43** PUBLIC CAR PARK
- 44** MOTEL CAR PARK
- 45** MEMBERS CAR PARK



## KEY

- Building
- Hardstand
- Facilities
- Trades
- Lawn
- Parking
- Amenities
- Ramp







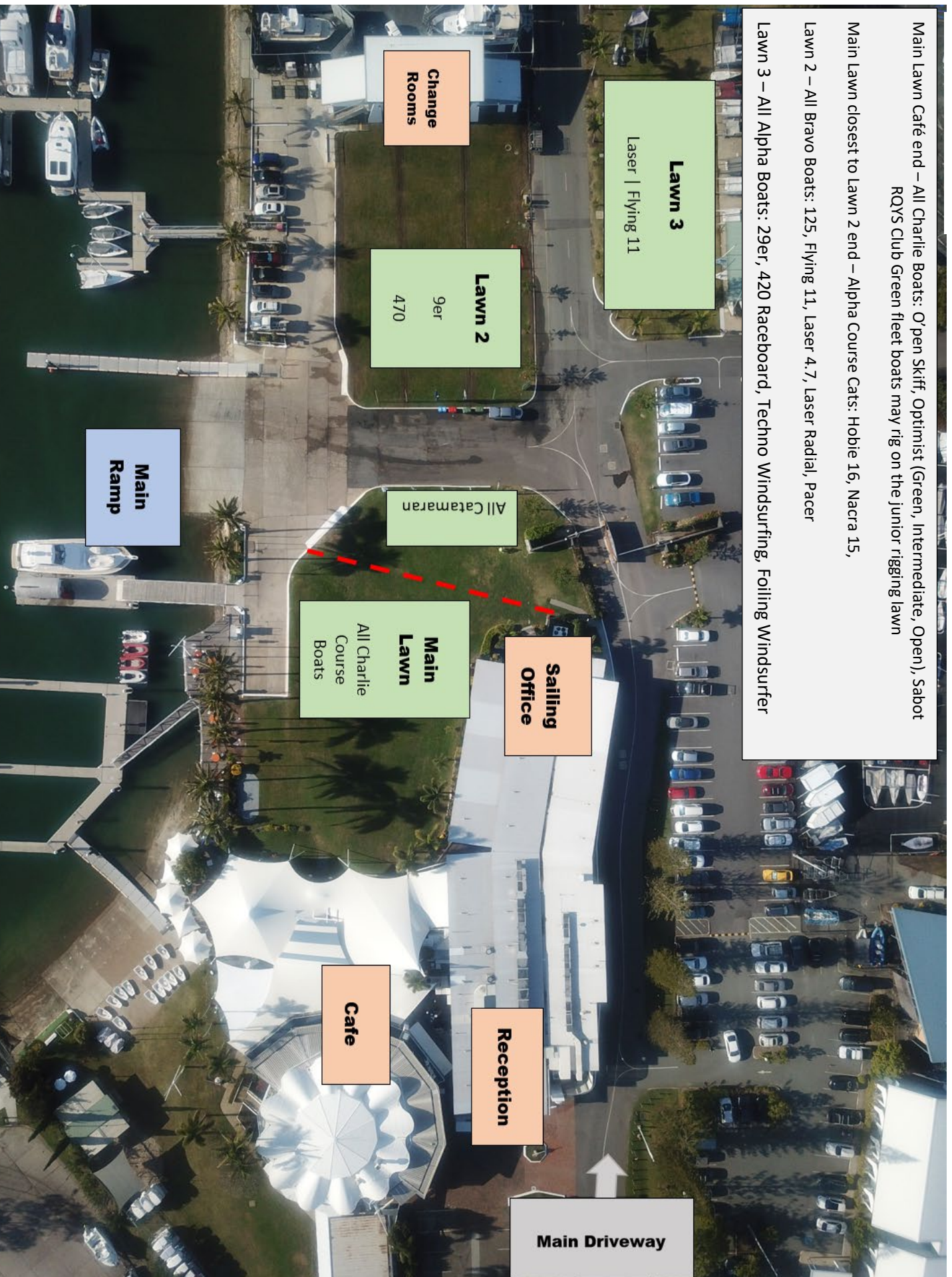
# Attachment C

Main Lawn Café end – All Charlie Boats: Open Skiff, Optimist (Green, Intermediate, Open), Sabot  
ROYLS Club Green fleet boats may rig on the Junior rigging lawn

Main Lawn closest to Lawn 2 end – Alpha Course Cats: Hobie 16, Nacra 15,

Lawn 2 – All Bravo Boats: 125, Flying 11, Laser 4.7, Laser Radial, Pacer

Lawn 3 – All Alpha Boats: 29er, 420 Raceboard, Techno Windsurfing, Foiling Windsurfer





# Attachment D





