



137th Sailing Season

Division Yacht

19th September 2021
Thru to
03rd April 2022

SAILING INSTRUCTIONS

(SI)

Including Amendment 1

Organising Authority
ROYAL QUEENSLAND YACHT SQUADRON LTD
578 Royal Esplanade, Manly, QLD 4179

The notation '[NP]' in a rule of the sailing instructions (SIs) means that a boat may not protest another boat for breaking that rule. This changes RRS 60.1(a).

1. RULES

- 1.1. The event is governed by the rules as defined in The Racing Rules of Sailing.
- 1.2. RRS Appendix 5.3 will Apply.
- 1.3. The Australian Sailing prescriptions and special regulations of Australian Sailing (AS) Part 1 Category 5 will apply. All skippers shall supply the Sailing Office with a valid SR Category 5 Safety Equipment Audit (Category 1, 2, 3 & 4 forms will also be accepted) which has been endorsed by a certified auditor. See SI Attachment D.
- 1.4. The OMR rules will apply.
- 1.5. The AMS rules will apply.
- 1.6. The IRC rules 2020, Parts A, B & C shall apply. The IRC rule 22.4.2 shall not apply. There shall be no limitation on Crew Number or weight except as required for boats rated as One-Designs which shall comply with IRC rule 22.4.1.
- 1.7. The Supplementary Sailing Instructions of the Manly Course Book (page 3 of the course book) shall apply for courses conducted from that Course Book. These apply in relation to Course Reversals, use of X Marks, and moving of the Starting Area.
- 1.8. Competitors must comply with Qld Government COVID-19 contact tracing via the electronic app "Check in Qld".
- 1.9. The RQYS Constitution, Club Participation Rules (See SI Attachment C), House Rules and Codes of Conduct will apply.
- 1.10. The Skipper from each racing boat must fill in there [SailSys "Crew List"](#) of all sailors onboard competing in each race, prior to the start of the race.
- 1.11. Competitors must follow all Club COVID-19 Policies (<https://www.rqys.com.au/policiesanddocuments/>)

2. CHANGES TO SAILING INSTRUCTIONS

- 2.1. Any change to the sailing instructions will be posted before 0900 on the day it will take effect, except that any change to the schedule of races will be posted by 2000 on the day before it will take effect.

3. COMMUNICATIONS WITH COMPETITORS

- 3.1. Notices to competitors will be posted on the official notice board located at <https://www.rqys.com.au/sailingnoticeboard/> .
- 3.2. The race office is located at The RQYS Sailing Office located adjacent to Rigging Lawn 2, telephone 3396 8666, email sailing@rqys.com.au .
- 3.3. On the water, the race committee intends to monitor and communicate with competitors on VHF radio channel 72.
- 3.4. [DP] While racing, except in an emergency, a boat shall not make voice or data transmissions and shall not receive voice or data communication that is not available to all boats.

4. CODE OF CONDUCT

- 4.1 [DP] Competitors and support persons shall comply with reasonable requests from race officials.
- 4.2 [DP] Competitors and support persons shall handle any equipment or place advertising provided by the organizing authority with care, seamanship, in accordance with any instructions for its use and without interfering with its functionality.

5. SIGNALS MADE ASHORE

- 5.1. Signals made ashore will be displayed at the official flagpole located at the top of the Eastern Gangway of the Bill Kirby Docks.
- 5.2. When flag AP is displayed ashore, '1 minute' is replaced with 'not less than 60 minutes' in Race Signals AP.

6. SCHEDULE OF RACES

- 6.1. The schedule of race dates are detailed in the [RQYS 2021/2022 Sailing Program](#).

RACE	FIRST WARNING SIGNAL
All Passage Races Division 1 Division 2 Division 3 Division 4 – Cruising Division 5 - Multihulls	Not Before 1045 hours Not Before 1035 hours Not Before 1025 hours Not Before 1035 hours Not Before 1055 hours
All Around the Cans Races	First race 1100 hours

- 6.2. On the last scheduled day of racing no warning signal will be made after 1500.

7. CLASS FLAGS

- 7.1. The class flags are:

FLEET	FLAG
Division 1	Numeral Pennant 1
Division 2	Numeral Pennant 2
Division 3	Numeral Pennant 3
Division 4 – Cruising	Numeral Pennant 4
Division 5 – Multihulls	Numeral Pennant 5

8. RACING AREA

- 8.1. SI Attachment A shows the location of the start areas.
- 8.2. Division Yachts Short or Long Round the Bay (Passage Races) shall be started in Waterloo bay, inside of Green Island.
- 8.3. Division Yachts Round the Cans races shall be conducted outside (East) of Green Island.

9. COURSES

- 9.1. The passage race diagrams in the Manly Course Book shows the courses, including the approximate angles between legs, the order in which marks are to be passed, and the side on which each mark is to be left.
- 9.2. The Round the Cans race diagrams are detailed in SI Attachment B.
- 9.3. No later than the warning signal, the race committee start boat shall display the designation of the course for each class or division and the approximate compass bearing of the first leg.
- 9.4. When Racing is combined with MCC the [MCC Course Book](#) shall amend SI 9.1

10. MARKS

- 10.1. Designated fixed marks are described in the Manly Course Book.
- 10.2. Laid Marks are described in Attachment B for Round the Cans.
- 10.3. Laid marks for Passage Races shall be a Pink inflatable mark.
- 10.4. The Start / Finish marks shall be orange teardrops.

11. THE START

- 11.1. The starting line shall be between a staff displaying an orange flag on the start vessel at the starboard end and the course side of the port-end starting mark.
- 11.2. Boats whose warning signal has not been made shall avoid the starting area during the starting sequence for other yachts or races.
- 11.3. If any part of a boat's hull is on the course side of the starting line during the two minutes before her starting signal and she is identified, the race committee will attempt to broadcast her sail number on VHF channel 72. Failure to make a broadcast or to time it accurately will not be grounds for a request for redress. This changes RRS 62.1(a).
- 11.4. A boat that does not start within ten (10) minutes after her starting signal will be scored Did Not Start without a hearing. This changes RRS A5.1 and A5.2.

12. CHANGE OF THE NEXT LEG OF THE COURSE

- 12.1. To change the next leg of the course, the race committee will move the original mark or the finishing line to a new position.

13. THE FINISH

- 13.1. The finishing line shall be between a staff displaying an orange flag on the finishing boat and the course side of the finishing mark.
- 13.2. When there is no race committee vessel on station at the finish the alternate finish line shall be an extension of the Eastern most Port and Starboard Lateral Beacons to the south end within 100m. In this case, yachts are required to declare to the Sailing Office their finish time. Finish declarations shall be lodged at the Sailing Office in person or by phone (sailing@rqys.com.au or 07 3396 8666) within 2 hours following the completion of the race and shall include the name of the yacht, skipper and finishing time to Eastern Standard Time.

14. TIME LIMITS [AND TARGET TIMES]

- 14.1. The Race Time Limit (see RRS 35), and the Finishing Window are shown in the table below.

Around the Cans Race Time Limit	Around the Cans Finishing Window	Passage Race Time Limit	Passage Race Finishing Window
90 minutes	45 minutes	1700 hrs	N/A

- 14.2. The Finishing Window is the time for boats to finish after the first boat sails the course and finishes. Boats failing to finish within the Finishing Window, and not subsequently retiring, penalized or given redress, will be scored Time Limit Expired (TLE) without a hearing. A boat scored TLE shall be scored points for the finishing place one] more than the points scored by the last boat that finished within the Finishing Window. This changes RRS 35, A5.1, A5.2 and A10.
- 14.3. Failure to meet the Target Time will not be grounds for redress. This changes RRS 62.1(a).

15. HEARING REQUESTS

- 15.1. For each division, the protest time limit is 90 minutes after the last boat [in that class] finishes the last race of the day or the race committee signals no more racing today, whichever is later. The time will be posted on the official notice board.
- 15.2. Hearing request forms are available from the race office at <https://www.rqys.com.au/regatta-club-racing-documents-auditors/>.
- 15.3. Notices will be posted no later than 30 minutes after the protest time limit to inform competitors of hearings in which they are parties or named as witnesses. Hearings will be held in the protest room specified in the hearing notice.

16. SCORING

- 16.1. The number of races required to constitute a series and the number of discard allowed shall be as follows;
 - 16.1.1. Squadron Championship: 1 discard after 4 completed races, 2 discards after 8 completed race).
 - 16.1.2. Seasons Points: 1 discard after 4 completed races, additional 1 discard after every additional 4 completed races.
 - 16.1.3. Passage Races Series': 1 discard after 4 completed races, 2 discards after 8 completed races.
 - 16.1.4. Round the Cans Series: 1 discard after 4 completed races.
- 16.2. A boat which Does Not Compete (DNC) in a race shall be scored the number competitors within the fleet at the starting area, plus an additional three (3) points. This changes RRS A5.3 .

17. HANDICAPS

- 17.1. PHS: Handicaps shall be allocated by the RQYS Handicap Sub-Committee for a vessels first race in the series, Subsequent races will be adjusted by the SailSys PHS system. Changes to a boat's sailing configuration or equipment shall be advised to the RQYS Sailing Office prior to the next race in which it intends to compete.
- 17.2. IRC: Yachts racing in the IRC division shall not receive results unless a valid certificate is available on the [online TCC listings](#) OR a copy of the current certificate has been submitted on SailSys, prior to their first race of the season. Backdated results will not be processed. If a new certificate is issued to a boat after a boat's first race of the season, a copy of the certificate must be submitted to the RQYS Sailing Office for the rating to be adjusted.
- 17.3. OMR/AMS: Yachts racing in the OMR and AMS divisions will not receive results without a valid rating with their relevant organisation. Any changes in rating shall be forwarded to the RQYS Sailing Office for the rating to be adjusted.
- 17.4. Failing to notify the RQYS Sailing Office of changes to boats configuration or rating, may result in protest by the Race Committee. Penalties for these breaches may be less than disqualification.

18. SAFETY REGULATIONS

- 18.1. All skippers shall SIGN ON prior to the first warning signal each day with the start boat on VHF Ch 72. Boats failing to sign on may be scored DNC without a hearing. This changes RRS 63.1, A4 and A5.
- 18.2. [DP] A boat that retires from a race shall notify the race committee at the first reasonable opportunity.

- 18.3. Competitors shall comply with the following Squadron Policies:
- 18.3.1. Remain within the 6-knot speed at all times in Manly Harbour
 - 18.3.2. Unless in use, boats shall NOT carry anchors protruding beyond the bow whilst racing.

19. REPLACEMENT OF EQUIPMENT

- 19.1. Boats intending to race with a sail number other than that stipulated on their entry shall advise the sailing office in writing of the change, prior to racing. Failure to comply shall result in the boat being scored DNC for all races on that day. This changes RRS 63.1, A4 and A5.

20. EQUIPMENT AND MEASUREMENT CHECKS

- 20.1. A boat or equipment may be inspected at any time for compliance with the class rules, notice of race and sailing instructions.
- 20.2. [DP] When instructed by a race official on the water, a boat shall proceed to a designated area for inspection.

21. OFFICIAL VESSELS

- 21.1. Official boats shall be marked with a white flag or sticker with black letters 'RC' or 'MEDIA'.

22. BERTHING

- 22.1. [DP] Boats shall not dock or Rig on the RQYS fuel dock unless re-fuelling.
- 22.2. For RQYS Marina Berths or use of the VIP Docks, please contact the RQYS Marina Office on 3396 8666 during business hours.

23. PRIZES

- 23.1. The 2021/2022 Presentations of Trophies for Seasons Points and Squadron Championships and other events will take place in a Squadron Function Room, to be advised by invitation in future. A list of major trophies is at [SI Attachment E](#).
- 23.2. Only Season Entrants are eligible for Seasons Points or Squadron Championship awards at the Junior and/or Senior Presentation of Trophies.
- 23.3. Other prizes may be awarded at the discretion of the Organising Authority.

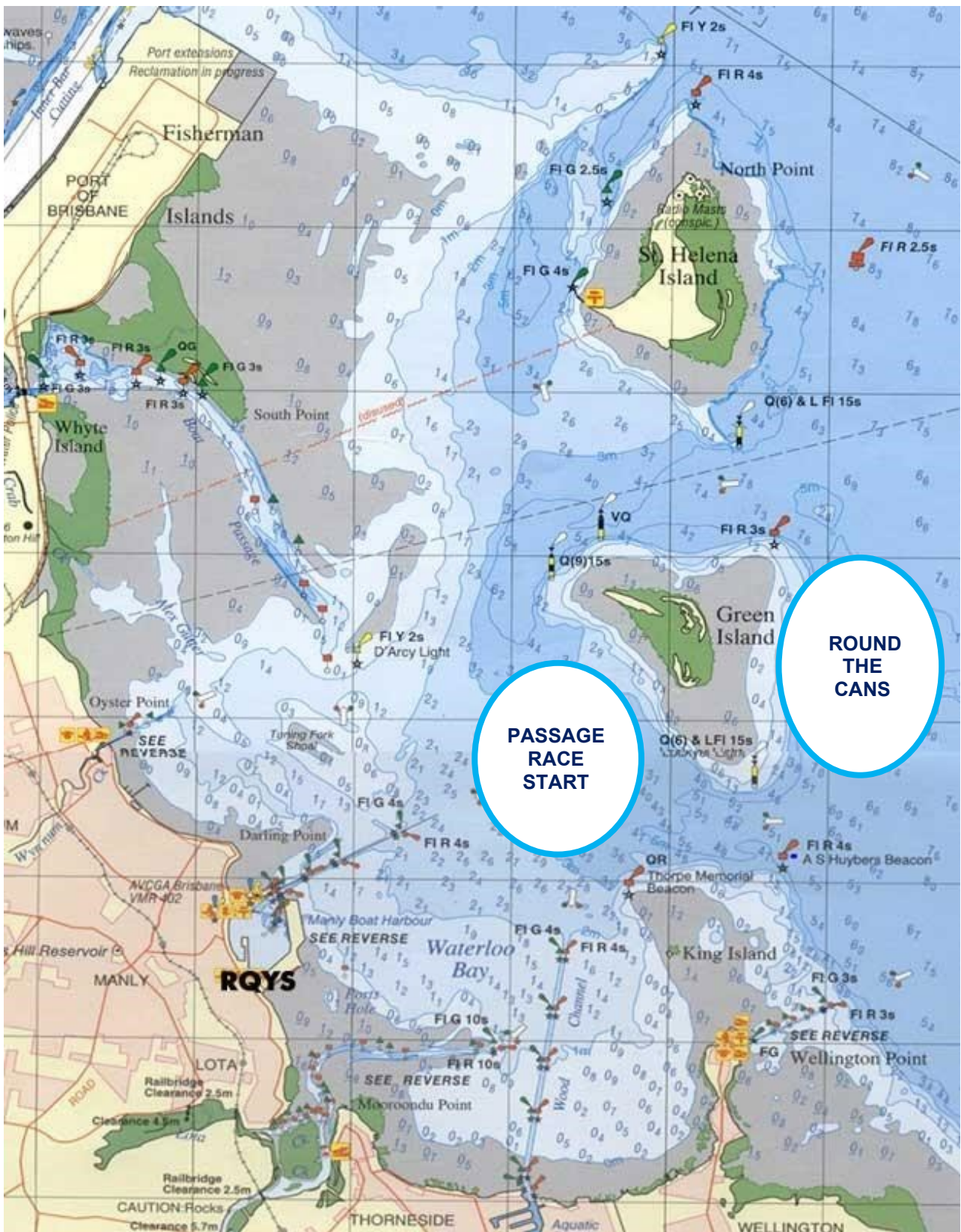
24. RISK STATEMENT

- 24.1. RRS 3 states: 'The responsibility for a boat's decision to participate in a race or to continue to race is hers alone.' By participating in this event each competitor agrees and acknowledges that sailing is a potentially dangerous activity with inherent risks. These risks include strong winds and rough seas, sudden changes in weather, failure of equipment, boat handling errors, poor seamanship by other boats, loss of balance on an unstable platform and fatigue resulting in increased risk of injury. **Inherent in the sport of sailing is the risk of permanent, catastrophic injury or death by drowning, trauma, hypothermia or other causes.**

25. INSURANCE

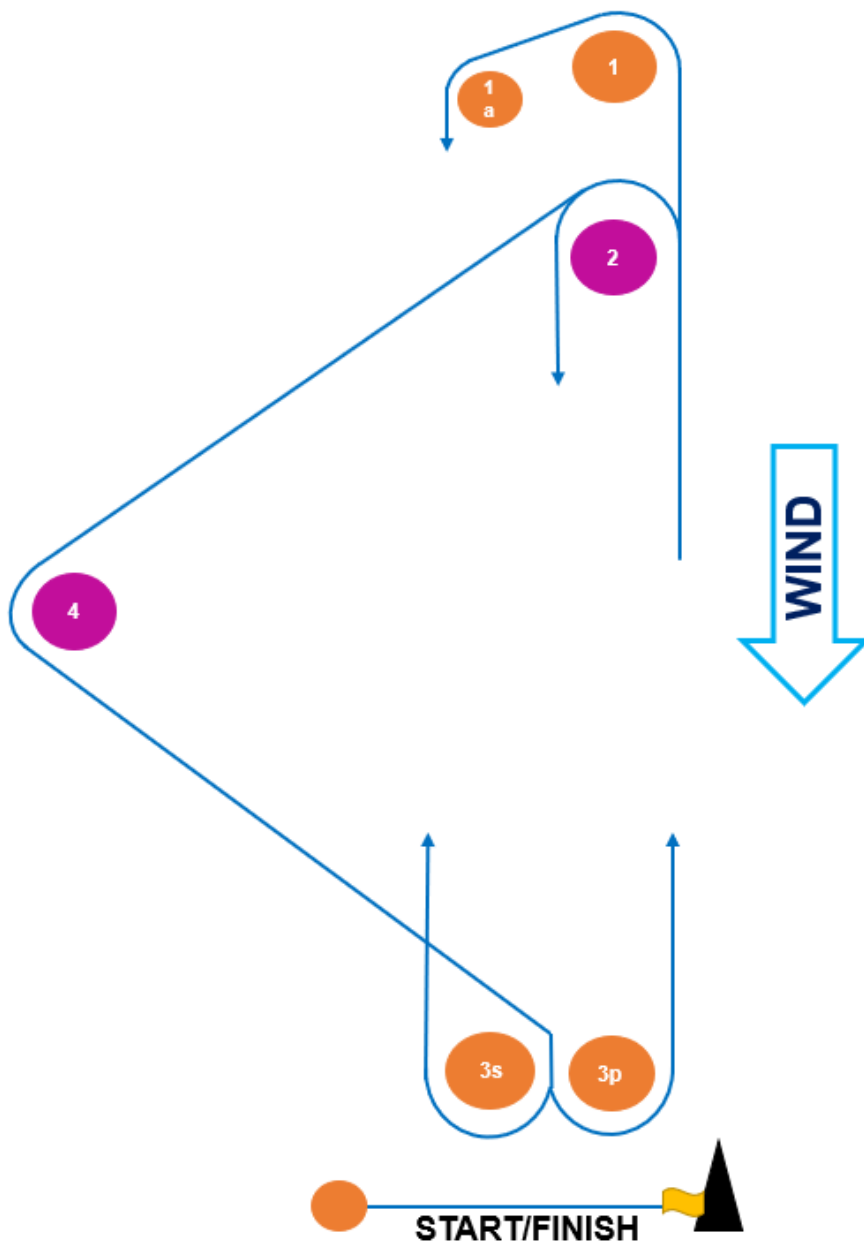
- 25.1. Each participating boat shall be insured with valid third-party liability insurance with a minimum cover of \$10,000,000AUD per incident or the equivalent.

SI ATTACHMENT A



SI Attachment B

CODE	COURSE	MARKS DESCRIPTION
L1	Start – 1 – 1a – Finish	Mark 1, 3s & 3p: Orange Inflatable
L2	Start – 1 – 1a – 3s/3p – 1 – 1a – Finish	Marks 1a & Start/Finish Pin: Orange Tear-drop
L3	Start – 1 – 1a – 3s/3p – 1 – 1a – 3s/3p – 1 – 1a – Finish	Mark 2 & 4: Purple Inflatables
I1	Start – 2 – Finish	
I2	Start – 2 – 3s/3p – 2 – Finish	
I3	Start – 2 – 3s/3p – 2 – 3s/3p – 2 – Finish	
T2	Start – 2 – 4 – 3p – 2 – 4 – Finish	
T3	Start – 2 – 4 – 3p – 2 – 4 – 3p – 2 – 4 – Finish	



SI Attachment C

Club Participation Rules

- Following participation with a RQYS Sail Pass Membership (or sailing membership to another club) in any twelve (12) Royal Queensland Yacht Squadron Ltd. (RQYS) races other than invitation events, any owner or skipper of a participating boat with a Casual Entry, is required to become a member, in the appropriate category, of RQYS.
- Non-member Crew can sail up to twelve (12) times with a RQYS Sail Pass Membership (or participate with sailing membership to another club) before they are required to become a member, in the appropriate category, of RQYS.
- Only current financial members of the Royal Queensland Yacht Squadron (in the correct category of Membership) are eligible for a Season Entry.
- It is the responsibility of the owner/skipper to ensure that all crew competing on the boat hold a current membership of Australian Sailing or equivalent membership of a yachting authority recognised by World Sailing (RQYS Day Pass or Sailing Membership of another club), and the boat has \$10,000,000 third party insurance for the duration of racing or being on the RQYS premises.
- All members intending to race shall pre-pay and register with a Season Entry or Casual Entry prior to racing. Failure to pay the outlined fee and/or register shall result in positions not being recorded and forfeited by the competitor. Members who continue to race without paying or registering shall be disciplined by General Committee.

For Further information on RQYS Sail, Crew & Social Day Pass Membership and pricing please see our policy: <https://www.rqys.com.au/wp-content/uploads/2021/08/RQYS-Sail-Crew-and-Social-Day-Pass-Membership-V-1.7-Mar-2021.pdf> .

SI Attachment D

SAFETY FIRST

As part of a national incentive by Australian Sailing, RQYS has adopted 'Whole of Fleet' Safety Audits appropriate to your race category.

So why extend equipment audits to all of our fleet?

The simple answer is compliance and good safety practice within the club. We have a Duty of Care to those participating in RQYS events and this extends beyond RQYS responsibility to boat owners and skippers.

Nationally, self audits have not, in the majority of cases, been completed to a satisfactory standard and it is our intention to engender into our sailors a culture of safety which benefits us all.

Chris Morgan, a division yacht owner and Queensland's Senior Sailing Australia Equipment Safety Auditor, has agreed to undertake the management of this program alongside the sailing office.

- All yacht owners and off the beach boats will be required to complete the appropriate Sailing Australia category form applicable to the club racing they intend to enter.
[Off the Beach Audit](#) (most recent version at July 2021)
[AS SR Safety Equipment Checklists](#)
- Owners will then be required to contact an Australian Sailing approved auditor(s) to arrange an inspection and sign off.

This is a compliance required under RRS 75 "entering an event", SI 1.3.

Below is a list of our current RQYS auditors. If you are interested in becoming an auditor please contact Chris Morgan.

RQYS AUDITORS for Division Yachts

Ben Davis	0437853523	bdavis4179@gmail.com
Ian Davis	0419799958	hoodsailmakers@gmail.com
Paul King	0409725488	paulkingmwa@gmail.com
Dave Richards		davidrichards30.dr@gmail.com
Chris Morgan	0418767591	chrismorgan5@outlook.com
Christopher Wren	0448999800	cwwren@bigpond.net.au
Helen Warneke	0429347481	helen.warneke@uccommunity.org.au

SI Attachment E

Most Consistent Skipper in a Junior Class

~ Harold Dean Memorial Trophy ~

Best Result at a National Regatta

~ Vidgen Perpetual Trophy ~

Most Improved Junior Skipper

~ T E Passey Trophy ~

Junior Sailor of the Year

~ Lady Stonehaven Challenge Cup ~

Youth Sailor of the Year

~ W A O'Hare Memorial Trophy ~

Squadron Champion for an Olympic Class

~ Astra Trophy ~

Longest Serving Member of a Season Points Winner

~ The Governor's Trophy ~

Most Consistent Skipper in a Senior Class

~ Callisto Cup – AM Greenfield Trophy ~

Most Consistent Contributor

~ Maurice Tilley Perpetual Trophy ~

Corinthian Yachtsman of the Year

~ Model Elliott ~

Best Performing Female Crew

~ Erica Blumson Trophy ~

Best Performance in an Olympic Class

~ John H Robinson Memorial Trophy ~

Keelboat Crew of the Year

~ E Sparkes Trophy ~

Sailor of the Year

~ Hardy Brothers Jewellers Trophy ~