



Windfoil

State Championship

26 – 28th November 2021

SAILING INSTRUCTIONS

(SI)

Organising Authority
ROYAL QUEENSLAND YACHT SQUADRON LTD
578 Royal Esplanade, Manly, QLD 4179

The notation '[NP]' in a rule of the sailing instructions (SIs) means that a boat may not protest another boat for breaking that rule. This changes RRS 60.1(a).

The term 'boat' elsewhere in the SI means 'board' or 'boat' as appropriate.

1. RULES

- 1.1. The event is governed by the rules as defined in The Racing Rules of Sailing – Appendix B Windsurfing Competition Rules (WCR) RSS 2021 - 2024.
- 1.2. The prescriptions and special regulations of Australian Sailing Part 2 will apply.
- 1.3. The Class Rules for FWC Foil Division and iQFoil Class shall apply where applicable.
- 1.4. Appendix T – Arbitration will apply.
- 1.5. Competitors shall wear helmets (conform EN 1385 standard) to provide protection to the head.
- 1.6. Competitors must comply with Qld Government COVID-19 contact tracing via the electronic app “Check in Qld”.

2. CHANGES TO SAILING INSTRUCTIONS

- 2.1. Any change to the sailing instructions will be posted before 0900 on the day it will take effect, except that any change to the schedule of races will be posted by 2000 on the day before it will take effect.
- 2.2. Changes to the SIs may be made on the water by flying Code flag L and displaying the change on a board on the Race Committee (RC) Signal Vessel.

3. COMMUNICATIONS WITH COMPETITORS

- 3.1. Notices to competitors will be posted on the official notice board located at <https://www.rqys.com.au/sailingnoticeboard/> .
- 3.2. The race office is located at The RQYS Sailing Office located adjacent to Rigging Lawn 2, telephone 3396 8666, email sailing@rqys.com.au .
- 3.3. [DP] While racing, except in an emergency, a boat shall not make voice or data transmissions and shall not receive voice or data communication that is not available to all boats.

4. CODE OF CONDUCT

- 4.1 [DP] Competitors and support persons shall comply with reasonable requests from race officials.
- 4.2 [DP] Competitors and support persons shall handle any equipment or place advertising provided by the organizing authority with care, seamanship, in accordance with any instructions for its use and without interfering with its functionality.

5. SIGNALS MADE ASHORE

- 5.1. Signals made ashore will be displayed at the official flag pole located at the top of the Eastern Gangway of the Bill Kirby Docks.
- 5.2. When flag AP is displayed ashore, '1 minute' is replaced with 'not less than 45 minutes' in Race Signals AP.

6. SCHEDULE OF RACES

Friday 26 November 2021	
Competitor Registrations	0900 – 1100 hrs
Competitor Briefing at Windsurfing Centre for Excellence	1030hrs
First Warning Signal	1200hrs
Saturday 27 November 2021	
Course Briefing on the RQYS Lawn	1000 hrs
First Warning Signal	1130 hrs
Competitor BBQ	After Racing
Sunday 28 November 2021	
First Warning Signal	1130 hrs
Regatta Prizes Announced & Presentation	1700 hrs

- 6.1. On the last scheduled day of racing no warning signal will be made after 1500 hrs.
- 6.2. There will be a maximum of six (6) races on any one day in a championship series with a maximum of 12 races.

7. CLASS FLAGS

- 7.1. [The Class flag is Red and Blue Insignia on White.

8. RACING AREA

- 8.1 SI Attachment A shows the location of the racing area.

9. COURSES

- 9.1. The diagram in SI Attachment B shows the course, including the approximate angles between legs, the order in which marks are to be passed, and the side on which each mark is to be left.
- 9.2. No later than the warning signal, the race committee signal vessel will display the approximate compass bearing of the first leg.
- 9.3. The Freeride Division will sail a shortened course.

10. MARKS

- 10.1. Marks are as described in SI Attachment B.

11. THE START

- 11.1. The starting line is between a staff displaying an orange flag on the signal vessel at the starboard end and the course side of the port-end starting mark.
- 11.2. To alert boards that a race or sequence of races shall begin soon, the orange starting line flag shall be displayed with one (1) sound at least five (5) minutes before a warning signal is made.
- 11.3. Boats whose warning signal has not been made shall avoid the starting area during the starting sequence for other races.

11.4. A boat that does not start within 4 minutes after her starting signal will be scored Did Not Start without a hearing. This changes RRS A5.1 and A5.2.

11.5. All boards shall start on starboard tack

12. CHANGE OF THE NEXT LEG OF THE COURSE

12.1. To change the next leg of the course, the race committee will lay a new mark (or move the finishing line) and remove the original mark as soon as practicable. When in a subsequent change a new mark is replaced, it will be replaced by an original mark.

13. THE FINISH

13.1. The finishing line will be between a staff displaying a blue flag on the finishing boat at the starboard end and the course side of the port-end finishing mark.

14. PENALTY SYSTEM

14.1. Under RRS Appendix B, rule 44.1 is One Penalty Turn.

15. TIME LIMITS [AND TARGET TIMES]

15.1. The Target Time, Race Time Limit (see RRS 35), and the Finishing Window are shown in the table below.

Target Time	Race Time Limit	Finishing Window
15min	25 min	10 min

15.2. The Finishing Window is the time for boats to finish after the first boat sails the course and finishes. Boats failing to finish within the Finishing Window, and not subsequently retiring, penalized or given redress, will be scored Time Limit Expired (TLE) without a hearing. A boat scored TLE shall be scored points for the finishing place one more than the points scored by the last boat that finished within the Finishing Window. This changes RRS 35, A5.1, A5.2 and A10.

15.3. Failure to meet the Target Time will not be grounds for redress. This changes RRS 62.1(a).

16. HEARING REQUESTS

16.1. For each class, the protest time limit is 60 minutes after the last boat in that class finishes the last race of the day or the race committee signals no more racing today, whichever is later. The time will be posted on the official notice board.

16.2. Hearing request forms are available from the race office at the RQYS Sailing Office (upstairs on rigging lawn 2) or <https://www.rqys.com.au/regatta-club-racing-documents-auditors/>

16.3. Notices will be posted no later than 30 minutes after the protest time limit to inform competitors of hearings in which they are parties or named as witnesses. Hearings will be held at a time and place advised on the hearing notice.

17. SCORING

- 17.1. Four (4) races are required to be completed to constitute a series.
- 17.2. When fewer than five (5) races have been completed, a boat's series score will be the total of her race scores.
- 17.3. When from five (5) to eight (8) races have been completed, a boat's series score will be the total of her race scores excluding her worst score.
- 17.4. When nine (9) or more races have been completed, a boat's series score will be the total of her race scores excluding her two (2) worst scores.
- 17.5. Overall scores will be published for Windfoils that includes FFW class and iQFoil class with separate scores for the Freeride Division.
- 17.6. The finishing position for the IQFoil Class, and the Women Division will be determined by their respective scoring position in the overall scores.

18. SAFETY REGULATIONS

- 1.1 [DP] Attention is drawn to SI 4.1 "Competitors shall wear helmets (conform EN 1385 standard) to provide protection to the head."
- 18.1. All skippers shall SIGN ON before racing each day and SIGN OFF at the earliest possible time after the completion of racing (but not later than the end of protest time). The sign on will be available near the rigging lawn and Centre of Excellence two (2) hours prior to the first warning signal scheduled on the day of racing.
- 18.2. The skipper of a boat that retires or does not intend to continue racing is required to SIGN OFF immediately on return to shore.
- 18.3. A boat that retires from a race shall notify the race committee as soon as possible.
- 18.4. Competitors shall comply with the following harbour bylaws:
 - 18.4.1. All sailing vessels shall give way to powered vessels at all times whilst inside the Manly Boat Harbour. Once outside the Manly Boat Harbour, competitors are to as soon as possible stay outside of the main channel, keeping clear of powered vessels.
 - 18.4.2. No Spinnakers are to be flown in the Manly Harbour 6-knot area.
- 18.5. Failure to SIGN ON shall result in that boat being penalised three (3) points for the first race of the session (but not worse than DNF). Failure to SIGN OFF shall result in that boat being penalised three (3) points for the last race of the session (but not worse than DNF). Penalties will be applied without a hearing. This changes RRS 63.1 and A5.

19. REPLACEMENT OF CREW OR EQUIPMENT

- 19.1. [DP] Substitution of damaged or lost equipment is not allowed unless authorized in writing by the Race Committee. Requests for substitution shall be made to the committee at the first reasonable opportunity, which may be after the race.

20. EQUIPMENT AND MEASUREMENT CHECKS

- 20.1. A boat or equipment may be inspected at any time for compliance with the class rules, notice of race and sailing instructions.
- 20.2. [DP] When instructed by a race official on the water, a boat shall proceed to a designated area for inspection.

21. OFFICIAL VESSELS

- 21.1. Official vessels will be identified by displaying a white flag with black letter 'RC' or 'MEDIA'.

22. [DP] SUPPORT & COACH PERSON VESSELS

- 22.1. All external powerboats coaching/supporting competitors for this event shall register with the Organising Authority, the RQYS Sailing Office, prior to the commencement of racing. Registration entitles boats to a range of benefits including launching facilities, overnight berthing, refuelling facilities, communication with athletes, daily hard copies of results and access to race course outside of 50m of any competitor or mark between start signal and finish of last boat, except when asked to assist by the Race Committee.
- 22.2. Registration fee per Powerboat is \$10.00, and payable on the online portal OR at the RQYS Sailing Office during Registration. Boats that do not have an identifying sticker shall pay a further \$10.00 (\$20.00 total) to receive an identifying sticker.
- 22.3. Support and spectator boats that do not register will not be permitted to launch or retrieve from RQYS premises, or berth there overnight; the Organising Authority reserves the right to remove such vessels from their premises.
- 22.4. All support/coach boats must have capability of communicating on VHF channel 72, 77 and 16 for the duration of the regatta.

23. TRASH DISPOSAL

- 23.1. Trash may be placed aboard official or support person vessels.

24. BERTHING

- 24.1. [DP] Boards shall be kept in their assigned area(s) while in the boat park.

25. PRIZES

- 25.1. Prizes will be awarded to:
 - 25.1.1. Open Foil Champion
 - 25.1.2. IQFOIL Champion
 - 25.1.3. Women's Champion
 - 25.1.4. Freeride Champion
- 25.2. Additional prizes may be awarded at the discretion of the Organising Authority

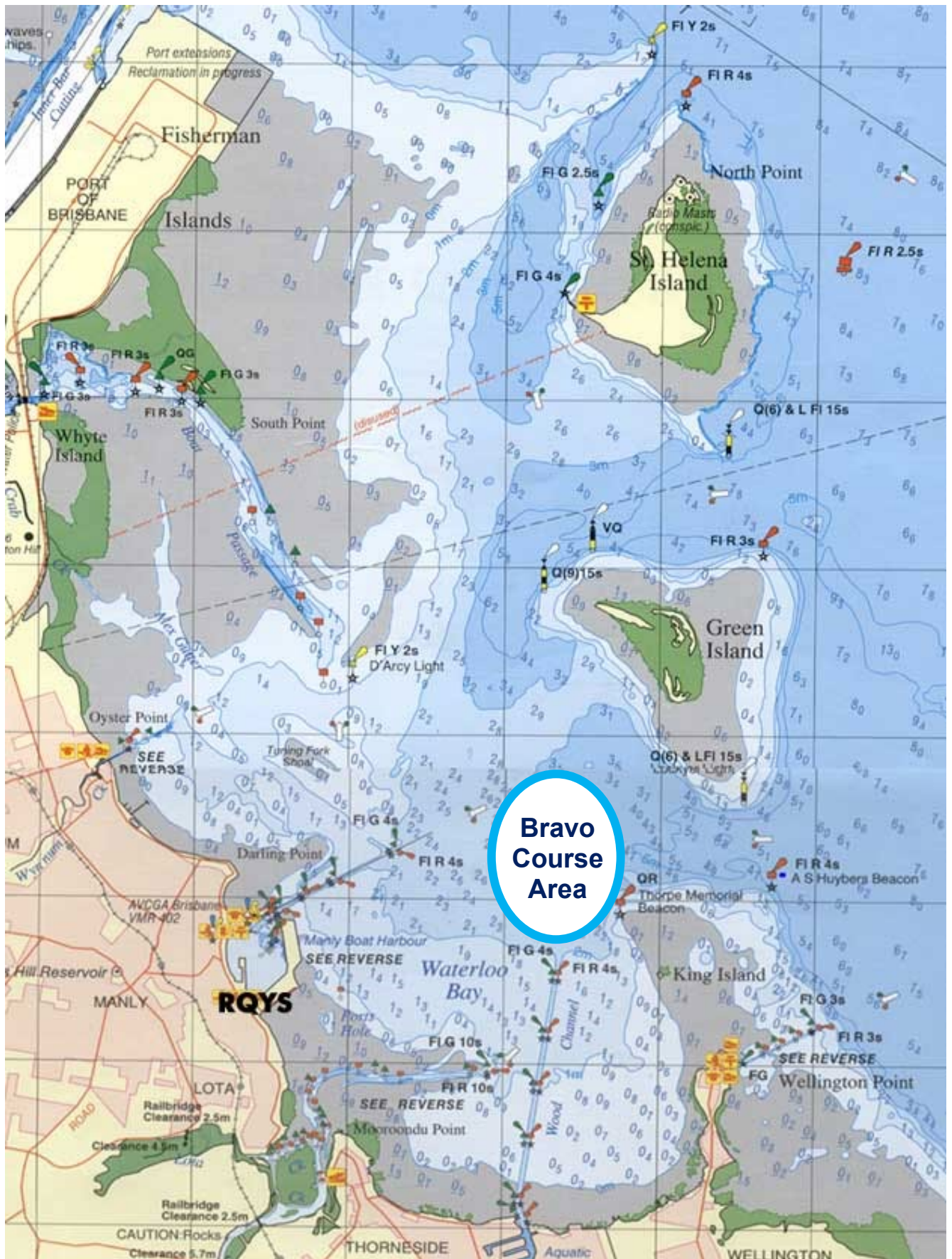
26. RISK STATEMENT

- 26.1. RRS 3 states: 'The responsibility for a boat's decision to participate in a race or to continue to race is hers alone.' By participating in this event each competitor agrees and acknowledges that sailing is a potentially dangerous activity with inherent risks. These risks include strong winds and rough seas, sudden changes in weather, failure of equipment, boat handling errors, poor seamanship by other boats, loss of balance on an unstable platform and fatigue resulting in increased risk of injury. **Inherent in the sport of sailing is the risk of permanent, catastrophic injury or death by drowning, trauma, hypothermia or other causes.**

27. INSURANCE

- 27.1. Each participating boat shall be insured with valid third-party liability insurance with a minimum cover of \$10,000,000AUD per incident or the equivalent.

SI ATTACHMENT A



SI ATTACHMENT B

CODE	COURSE	MARKS DESCRIPTION
LA2	Start – 1 – 4s/4p – 1 – 4p – Finish	Marks 1 & 4s/4p: Yellow Inflatable Mark 2: Purple Inflatable Start Pin: Orange Teardrop
LA3	Start – 1 – 4s/4p – 1 – 4s/4p – 1 – 4p – Finish	Finish Pin: Black & White Inflatable Change Mark: Orange Inflatable
L2	Start – 2 – 4s/4p – 2 – 4p – Finish	
L3	Start – 2 – 4s/4p – 2 – 4s/4p – 2 – 4p – Finish	

