



**OPENING DAY OF THE
137TH SAILING SEASON
INVITATIONAL RACE**

SATURDAY 11TH SEPTEMBER 2021

**NOTICE OF RACE
&
SAILING INSTRUCTIONS
(SI)**

Including Amendment 1

Organising Authority

ROYAL QUEENSLAND YACHT SQUADRON LTD

578 Royal Esplanade, Manly, QLD 4179

The notation '[NP]' in a rule of the sailing instructions (SIs) means that a boat may not protest another boat for breaking that rule. This changes RRS 60.1(a).

INTRODUCTION

The Opening Day Invitation Race is a warm-up race for all Off the Beach classes, Division Yachts and Etchells. All RQYS skippers and their crews are invited to participate in and celebrate the Opening of the 137th Sailing Season. Off the beach classes and Etchells will be racing scratch, and yachts will be racing PHS. This race does not contribute to pointscore racing of the 137th Sailing Season.

1. RULES

- 1.1 Racing shall be governed by the rules as defined in The Racing Rules of Sailing .
- 1.2 The prescriptions and Special Regulations of Australian Sailing Inc. shall apply.
- 1.3 Division Yachts must comply with Category 5 Safety and Equipment Special Regulations.
- 1.5 Class Rules shall apply to each class.
- 1.6 RQYS Club Participation Rules, House Rules and Code of Conduct shall apply.
- 1.7 Boats shall keep 20m clear of all Aids to Navigation. A boat failing to keep outside this exclusion zone may be protested by the Race Committee. Multiple breaches of the exclusion zone at marks may result in a boat being refused subsequent entry from racing at RQYS for a period of time at the discretion of the Sailing Manager. This is a requirement of Maritime Safety Queensland.

2. ELIGIBILITY AND ENTRY

- 2.1 Entry is open to boats owned, skippered and crewed by financial members of the Royal Queensland Yacht Squadron.
- 2.2 Skippers may enter Online <https://app.sailsys.com.au/club/25/entry/series/1237/pricing> or any RQYS stored vessel may enter by SIGNING-ON and including all requested details on the sign-on sheet.
- 2.3 Division Yachts and Etchells may enter by SIGNING-ON with the Race Committee over VHF ch 72 in the 30 minutes leading up to the race start.
- 2.5 There shall be no entry fee/s for this invitation race.

3. CHANGES TO SAILING INSTRUCTIONS

- 3.1. Any change to the sailing instructions will be posted before 0900 on the day it will take effect, except that any change to the schedule of races will be posted by 2000 on the day before it will take effect.

4. COMMUNICATIONS WITH COMPETITORS

- 4.1. Notices to competitors will be posted on the official notice board located at <https://www.rqys.com.au/sailingnoticeboard/> .
- 4.2. The race office is located at The RQYS Sailing Office located adjacent to Rigging Lawn 2, telephone 3396 8666, email sailing@rqys.com.au .
- 4.3. On the water, the race committee intends to monitor and communicate with Division yacht competitors on VHF 72.
- 4.4. [DP] While racing, except in an emergency, a boat shall not make voice or data transmissions and shall not receive voice or data communication that is not available to all boats.

5. CODE OF CONDUCT

- 4.1 [DP] Competitors and support persons shall comply with reasonable requests from race officials.
- 4.2 [DP] Competitors and support persons shall handle any equipment or place advertising provided by the organizing authority with care, seamanship, in accordance with any instructions for its use and without interfering with its functionality.

6. SIGNALS MADE ASHORE

- 6.1. Signals made ashore will be displayed at the official flag pole located at the top of the Eastern Gangway of the Bill Kirby Docks.

- 6.2. When flag AP is displayed ashore, '1 minute' is replaced with 'not less than 60 minutes' in Race Signals AP.

7. SCHEDULE OF RACES

DATE	EVENT	WARNING SIGNAL
Saturday, 11 September 2021	All Divisions: Race 1 OTB: Race 2	1330 hrs After Race 1

- 7.1. On the day of racing no warning signal will be made after 1500.

8. CLASS FLAGS and Divisions

Class flags shall be:

FLEET	FLAG
Around the Cans	
Boards	Numeral Pennant 1
Monohulls (Etchells, VX Ones, 29ers and Finns)	Numeral Pennant 2
Medium Monohulls (Flying 11s and all Lasers)	Numeral Pennant 3
Junior Monohulls (All Optimists and Sabots)	Numeral Pennant 4
Multihulls	Numeral Pennant 5
Passage Race	
Division Yachts	Numeral Pennant 1
Multihulls	Numeral Pennant 5

9. RACING AREA

- 8.1. SI Attachment A shows the location of the racing area for OTB Vessels and the starting area for Passage Race vessels.

10. COURSES and MARKS

- 10.1. Course and marks shall be as described in Attachment B.

11. THE START

- 11.1. The Passage Race starting line will be between a staff displaying an orange flag on the race committee vessel (Vic Frizzell, 10.5m Steber) at the starboard end and an orange buoy at the port end approximately 300m to 800m from the outer Manly Harbour Leads.
- 11.2. The Around the Cans starting line will be between a staff displaying an orange flag on the race committee vessel (Myora/Goodwill, Sharkcat) at the starboard end and an orange buoy at the port end.
- 11.3. To alert boats that a race or sequence of races shall begin soon, the orange starting line flag shall be displayed with one (1) sound at least five (5) minutes before a warning signal is made.
- 11.4. Boats whose warning signal has not been made shall avoid the starting area during the starting sequence for other classes.
- 11.5. A boat starting later than four (4) minutes after her starting signal shall be scored Did Not Start without a hearing. This changes RRS A5.1 and A5.2.

12. CHANGE OF THE NEXT LEG OF THE COURSE

- 12.1. To change the next leg of the course, the race committee will move the original mark or the finishing line to a new position

13. THE FINISH

- 13.1. The Finishing line will be between a staff displaying an Blue flag on the race committee vessel and an orange buoy at the port end.

14. PENALTY SYSTEM

- 14.1. For the catamarans and sailboards RRS 44.1 is changed so that the Two-Turns Penalty is replaced by the One-Turn Penalty.

15. TIME LIMITS [AND TARGET TIMES]

- 15.1. Boats failing to finish before 4500 (ADD)1530 hrs and finishes shall be scored Did Not Finish without a hearing. This changes RRS 35, A4 and A5.
- 15.2. Failure to meet the Time Limit will not be grounds for redress. This changes RRS 62.1(a).

16. HEARING REQUESTS

- 16.1. The Invitational races are intended to be of a fun and enjoyable nature and therefore there should be no reason to Protest. Competitors are encouraged to resolve their differences in a respectable manner.
- 16.2. Should an incident occur that cannot be resolved, competitors are required to lodge a protest with the Sailing Office via an email to sailing@rqys.com.au by 1600 hrs the day after the relevant Wags race. Protest forms are available at the sailing office and online.
- 16.3. Hearing request forms are available from the race office at <https://www.rqys.com.au/regatta-club-racing-documents-auditors/>.

17. SCORING and HANDICAPS

- 17.1. The Low Point System specified in RRS Appendix A shall apply.
- 17.2. Vessels racing shall be scored using the following handicap systems –
- Division Yachts – PHS determined by SailSys
 - Etchells, Trailere and Sports Boats – [CBH](#)
 - OTB – Yardstick (as per [AS Yardsticks 2020 – 21](#))
- 17.3. Three (3) entries in a class/category/division shall constitute a scoring division.

18. SAFETY REGULATIONS

- 18.1. All skippers shall SIGN ON before racing each day and SIGN OFF at the earliest possible time after the completion of racing (but not later than the end of protest time) as per SI 2 (Eligibility and Entry).
- 18.2. The skipper of a boat that retires or does not intend to continue racing is required to SIGN OFF immediately on return to shore.
- 18.3. A boat that retires from a race shall notify the race committee as soon as possible.
- 18.4. Competitors shall comply with harbour bylaws:
- 18.4.1. All sailing vessels shall give way to powered vessels at all times whilst inside the Manly Boat Harbour.
 - 18.4.2. Once outside the Manly Boat Harbour, competitors are to as soon as possible stay outside of the main channel, keeping clear of powered vessels.
 - 18.4.3. No Spinnakers are to be flown in the Manly Harbour 6-knot area.

19. EQUIPMENT AND MEASUREMENT CHECKS

- 19.1. A boat or equipment may be inspected at any time for compliance with the class rules, notice of race and sailing instructions.

20. OFFICIAL VESSELS

- 20.1. Official vessels will be identified with a white flag or sticker with the letter RC, J or Media.
- 20.2. Club Coaches may provide advice to any competitor during club racing.

21. [DP] SUPPORT TEAMS

- 21.1. Team leaders, non-club coaches and other support persons shall stay outside areas where boats are racing from the time of the preparatory signal for the first start until all boats have finished or retired or the race committee signals a postponement, general recall or abandonment.

22. TRASH DISPOSAL

- 22.1. Trash may be placed aboard official or support person vessels.

23. BERTHING

- 23.1. [NP] No vessels shall berth or rig on the RQYS Fuel Dock unless re-fuelling or approval from the RQYS Marina Office.

24. RESULTS

- 24.1. Results will be published as soon as possible after the race.

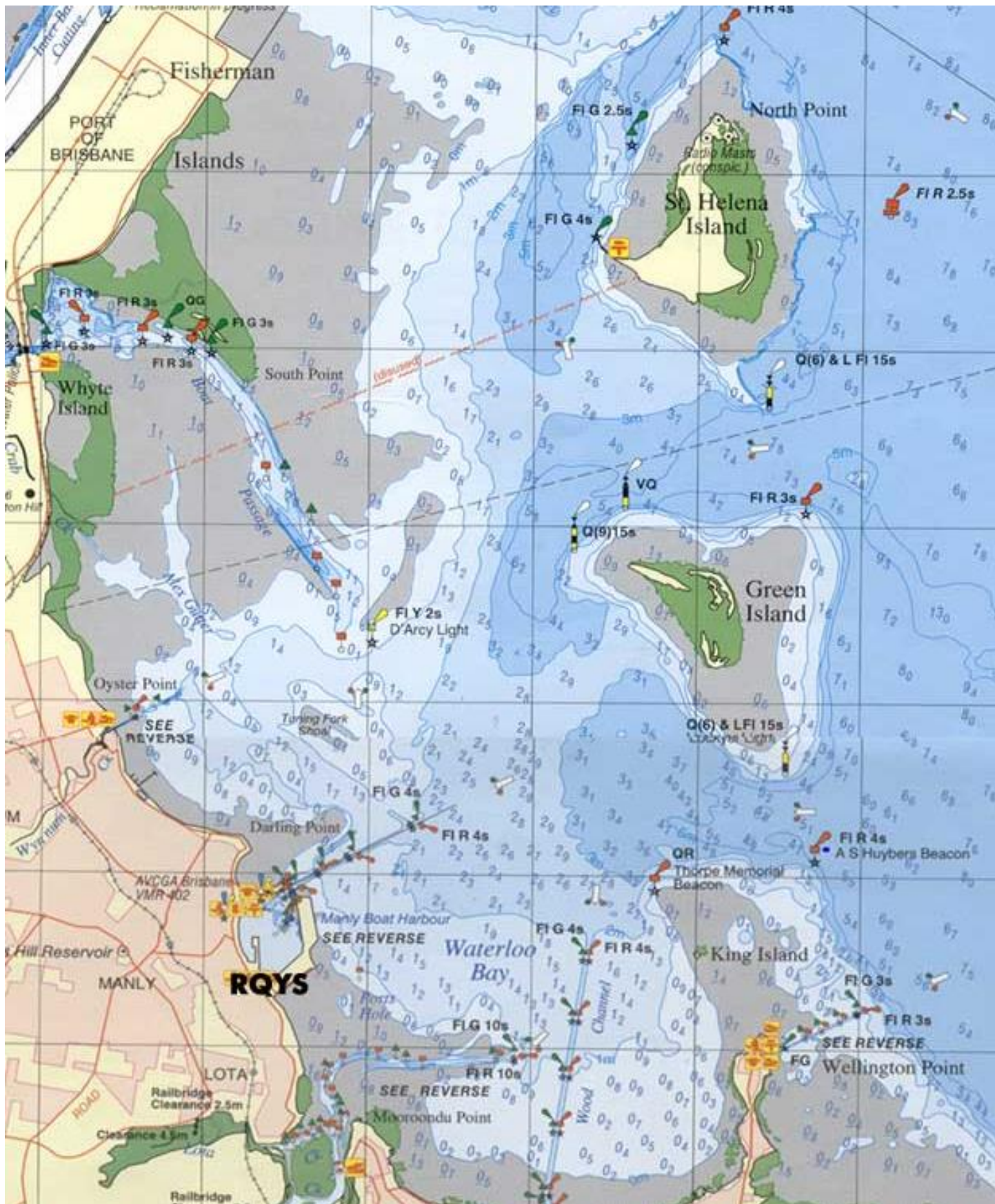
25. RISK STATEMENT

- 25.1. RRS 4 states: 'The responsibility for a boat's decision to participate in a race or to continue to race is hers alone.' By participating in this event each competitor agrees and acknowledges that sailing is a potentially dangerous activity with inherent risks. These risks include strong winds and rough seas, sudden changes in weather, failure of equipment, boat handling errors, poor seamanship by other boats, loss of balance on an unstable platform and fatigue resulting in increased risk of injury. **Inherent in the sport of sailing is the risk of permanent, catastrophic injury or death by drowning, trauma, hypothermia or other causes.**

26. INSURANCE

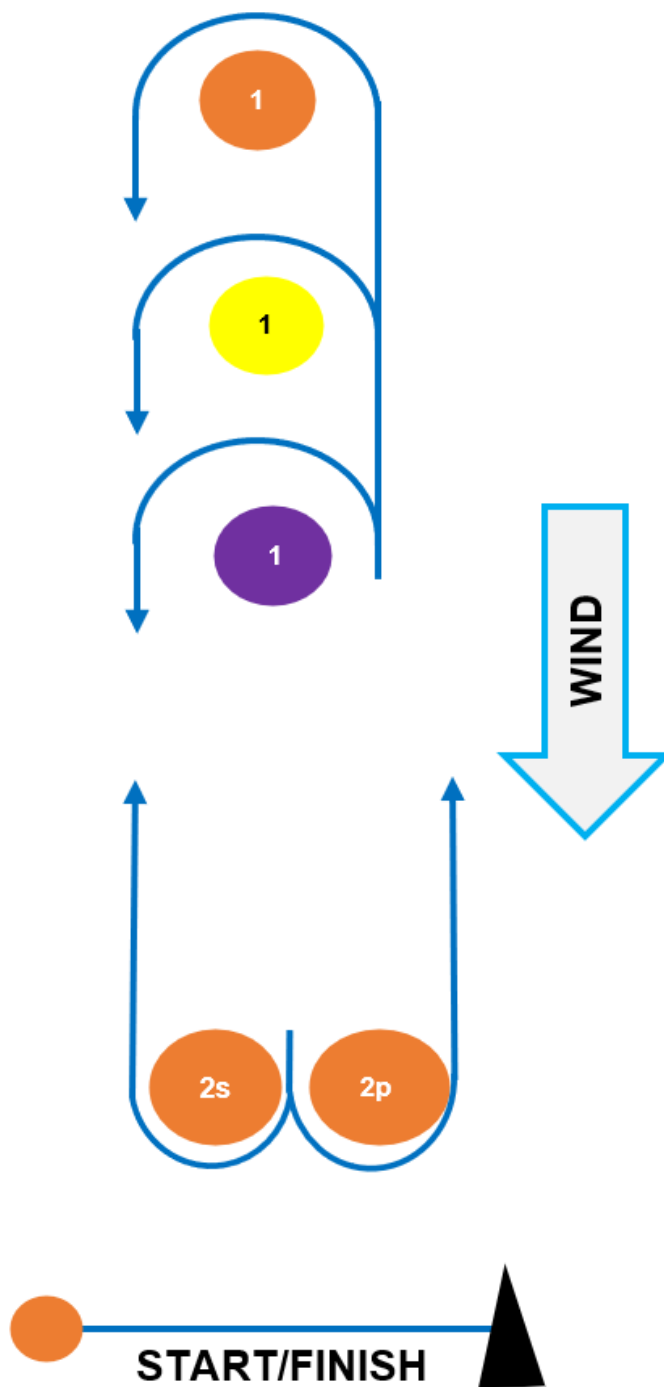
- 26.1. Each participating boat shall be insured with valid third-party liability insurance with a minimum cover of \$10,000,000AUD per incident or the equivalent.

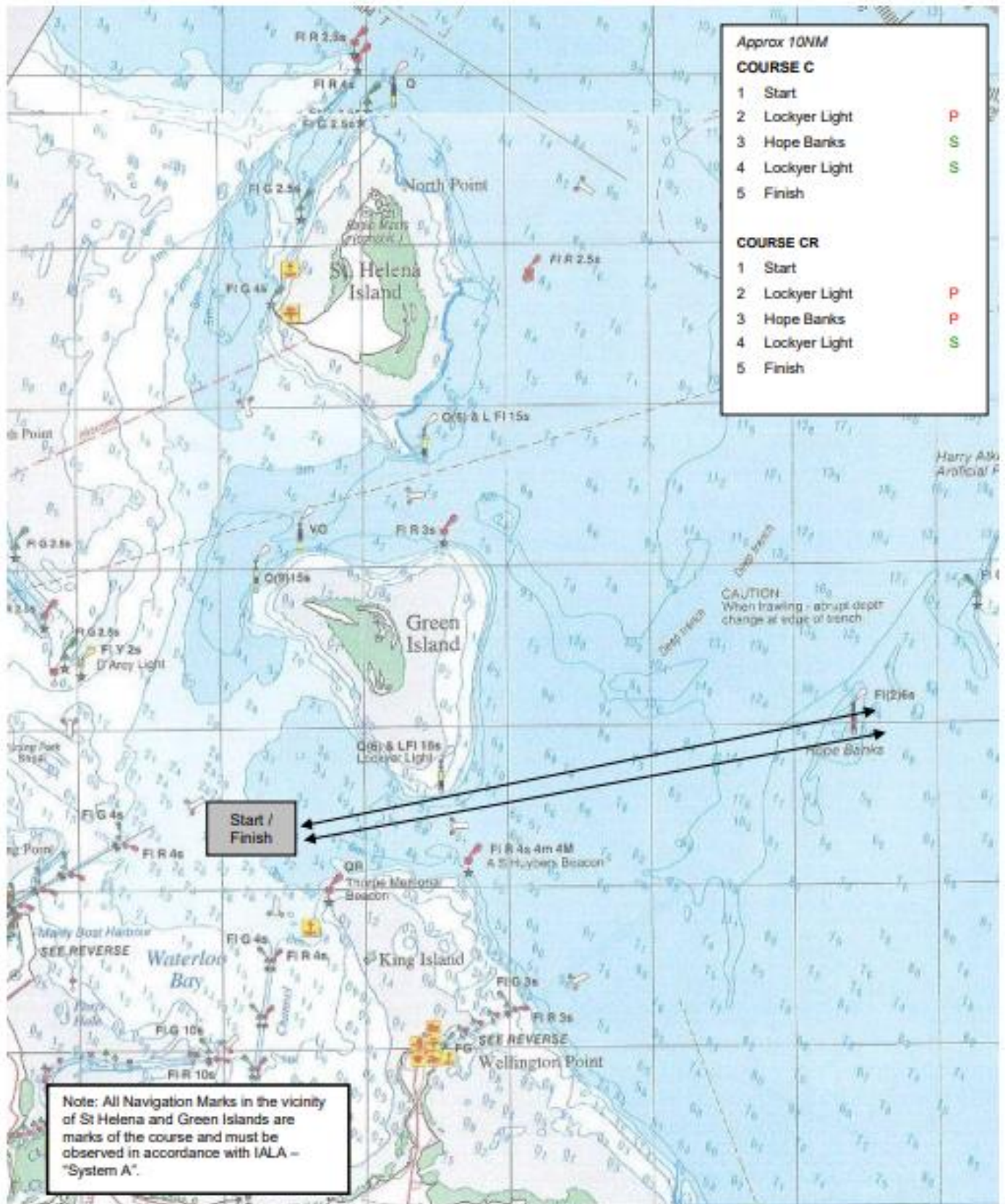
SI Attachment A



SI ATTACHMENT B

CODE	COURSE	MARKS DESCRIPTION
L1[colour]	Start – 1(Orange/Yellow/Purple), – Finish	Mark 1: Orange/Yellow/Purple Inflatable
L2[colour]	Start – 1(Orange/Yellow/Purple) – 2s/2p – 1(Orange/Yellow/Purple) – Finish	Marks 2s, 2p: Orange Inflatable Start/Finish Pin: Orange Teardrop
	The displayed colour next to the course code indicates which top mark is to be sailed.	





Note: charts illustrated in these sailing instructions show the general racing area – Not for Navigation