



---

# **YACHTSHARE**

## **2021 INTERNATIONAL**

### **FINN CLASS QLD**

### **CHAMPIONSHIP**

Saturday 2<sup>nd</sup> – Monday 4<sup>th</sup>  
OCTOBER 2021

# **SAILING INSTRUCTIONS**

## **(SI)**

Organising Authority  
**ROYAL QUEENSLAND YACHT SQUADRON LTD**  
578 Royal Esplanade, Manly, QLD 4179



*The notation '[NP]' in a rule of the sailing instructions (SIs) means that a boat may not protest another boat for breaking that rule. This changes RRS 60.1(a).*

*The notation '[DP]' in a rule means that the penalty for a breach of the rule may, at the discretion of the protest committee, be less than disqualification.*

**This event is subject to Govt Health Directives relating to Covid 19. The dates may be changed to accommodate any situation which may result from these directives.**

## **1. RULES**

- 1.1. The regatta shall be governed by the rules as defined in the current Racing Rules of Sailing.
- 1.2. Class rules shall apply.
- 1.3. RRS Appendix P - Shall Apply.
- 1.1. Competitors must comply with Qld Government COVID-19 contact tracing via the electronic app "Check in Qld".

## **2. CHANGES TO SAILING INSTRUCTIONS**

- 2.1. Any change to the sailing instructions will be posted before 0900 on the day it will take effect, except that any change to the schedule of races will be posted by 2000 on the day before it will take effect.

## **3. COMMUNICATIONS WITH COMPETITORS**

- 3.1. Notices to competitors will be posted on the official notice board located at <https://www.rqys.com.au/sailingnoticeboard/>.
- 3.2. The race office is located at The RQYS Sailing Office located adjacent to Rigging Lawn 2, telephone 3396 8666, email [sailing@rqys.com.au](mailto:sailing@rqys.com.au).
- 3.3. [DP] While racing, except in an emergency, a boat shall not make voice or data transmissions and shall not receive voice or data communication that is not available to all boats.

## **4. CODE OF CONDUCT**

- 4.1 [DP] Competitors and support persons shall comply with reasonable requests from race officials.
- 4.2 [DP] Competitors and support persons shall handle any equipment or place advertising provided by the organizing authority with care, seamanship, in accordance with any instructions for its use and without interfering with its functionality.

## **5. SIGNALS MADE ASHORE**

- 5.1. Signals made ashore will be displayed at the official flag pole located at the top of the Eastern Gangway of the Bill Kirby Docks.
- 5.2. When flag AP is displayed ashore, '1 minute' is replaced with 'not less than 45 minutes' in Race Signals AP.

## 6. SCHEDULE OF RACES

### 6.1.

DATE	EVENT	FIRST WARNING SIGNAL or TIME
Saturday 2nd October 2021	Race 1 Race 2 Race 3	1100 Hours After Race 1 After Race 2
	The BIG BBQ, Garden Bar at the covered BBQ area on the Opti Lawn	1700 Hours
Sunday 3rd October 2021	Race 4 Race 5 Race 6	1100 Hours After Race 4 After Race 5
	Presentation on RQYS Ceremonial Lawn	After Racing
Monday 4 <sup>th</sup> October 2021	Yachtshare Cruise to Morton Island and or Peel Island. Weather dependent.	1000 Hours

6.2. One extra race per day may be sailed, provided that no class becomes more than one race ahead of schedule and the change is made according to SI 2.1.

6.3. On the last scheduled day of racing no warning signal will be made after 1500.

## 7. CLASS FLAGS

7.1. The Class Flag shall be a white flag with the Finn insignia.

## 8. RACING AREA

8.1. SI Attachment A shows the location of the racing area.

## 9. COURSES

9.1. The diagram in SI Attachment B shows the course, including the approximate angles between legs, the order in which marks are to be passed, and the side on which each mark is to be left.

9.2. No later than the warning signal, the race committee signal vessel will display the approximate compass bearing of the first leg.

## 10. MARKS

10.1. Marks are as described in SI Attachment B.

## 11. THE START

11.1. The starting line is between a staff displaying an orange flag on the signal vessel at the starboard end and the course side of the port-end starting mark.

11.2. A boat that does not start within 5 minutes after her starting signal will be scored Did Not Start without a hearing. This changes RRS A5.1 and A5.2.

## 12. CHANGE OF THE NEXT LEG OF THE COURSE

12.1. To change the next leg of the course, the race committee will lay a new mark (or move the finishing line) and remove the original mark as soon as practicable. When in a subsequent change a new mark is replaced, it will be replaced by an original mark.

## 13. THE FINISH

13.1. The finishing line is between the signal vessel displaying a blue flag on the finishing mark at the starboard end and the course side of the port end finishing mark.

#### **14. PENALTY SYSTEM**

- 14.1. RRS 44.1 is changed so that the Two-Turns Penalty is replaced by the One-Turn Penalty.
- 14.2. RRS Appendix P applies.

#### **15. TIME LIMITS [AND TARGET TIMES]**

- 15.1. The target time for all races will be forty (40) minutes.
- 15.2. The time limit for all races will be seventy (70) minutes.
- 15.3. Failure to meet the target time will not be grounds for redress. This changes rule 62.1(a).
- 15.4. Boats failing to finish within twenty (20) minutes of the first boat sailing the course and finishing will be scored Did Not Finish without a hearing. This changes RRS 35, A5.1, A5.2 and A10.

#### **16. HEARING REQUESTS**

- 16.1. The protest time limit is 60 minutes after the last boat finishes the last race of the day or the race committee signals no more racing today, whichever is later. The time will be posted on the official notice board.
- 16.2. Hearing request forms are available from the race office at <https://www.rqys.com.au/regatta-club-racing-documents-auditors/>.
- 16.3. Notices will be posted no later than 30 minutes after the protest time limit to inform competitors of hearings in which they are parties or named as witnesses. Hearings will be held at a time and place advised on the hearing notice.

#### **17. SCORING**

- 17.1. Six (6) races are scheduled.
- 17.2. Three (3) races are required to be completed to constitute a series.
- 17.3. When four (4) or fewer races have been completed, a boat's series score shall be the total of her race scores.
- 17.4. When from five (5) to six (6) races have been completed, a boat's series score shall be the total of her race scores excluding her worst score.

#### **18. SAFETY REGULATIONS**

- 18.1. Sign-On and Sign-Off: All boats must sign-on before leaving the shore and sign-off as soon as practicable after returning to shore at the completion of the session's racing. Sign On/Off station is located on the RQYS Sailing Office.
- 18.2. The Sign-On period will close at the scheduled Warning Signal time of the first race for that session on that day. Competitors who did not sign-on for the first race in a session but wish to sign on for subsequent races in that session must sign-on prior to launching then inform the Start Boat of their intention to race.
- 18.3. The Sign-Off period for each Class will close at the protest cut-off time for each class.
- 18.4. A boat that retires from a race shall notify the race committee as soon as possible.

#### **19. REPLACEMENT OF CREW OR EQUIPMENT**

- 19.1. Substitution of damaged or lost equipment will not be allowed unless authorised by the race committee.
- 19.2. Requests for substitution shall be made to the committee at the first reasonable opportunity.

#### **20. EQUIPMENT AND MEASUREMENT CHECKS**

- 20.1. A boat or equipment may be inspected at any time for compliance with the class rules, notice of race and sailing instructions.
- 20.2. [DP] When instructed by a race official on the water, a boat shall proceed to a designated area for inspection.

## **21. OFFICIAL VESSELS**

- 21.1. Official vessels will be identified with a white flag or sticker with the letter RC, J or Media.

## **22. [DP] SUPPORT TEAMS**

- 22.1. Team leaders, coaches and other support persons shall stay outside areas where boats are racing from the time of the preparatory signal for the first start until all boats have finished or retired or the race committee signals a postponement, general recall or abandonment.

## **23. TRASH DISPOSAL**

- 23.1. Trash may be placed aboard official or support person vessels.

## **24. PRIZES**

- 24.1. Prizes shall be awarded for 1<sup>st</sup>, 2<sup>nd</sup> and 3<sup>rd</sup> overall.  
24.2. Prize presented by Sail Equipment Australia for mid fleet place.  
24.3. Other prizes may be awarded at the discretion of the Organising Authority.

## **25. RISK STATEMENT**

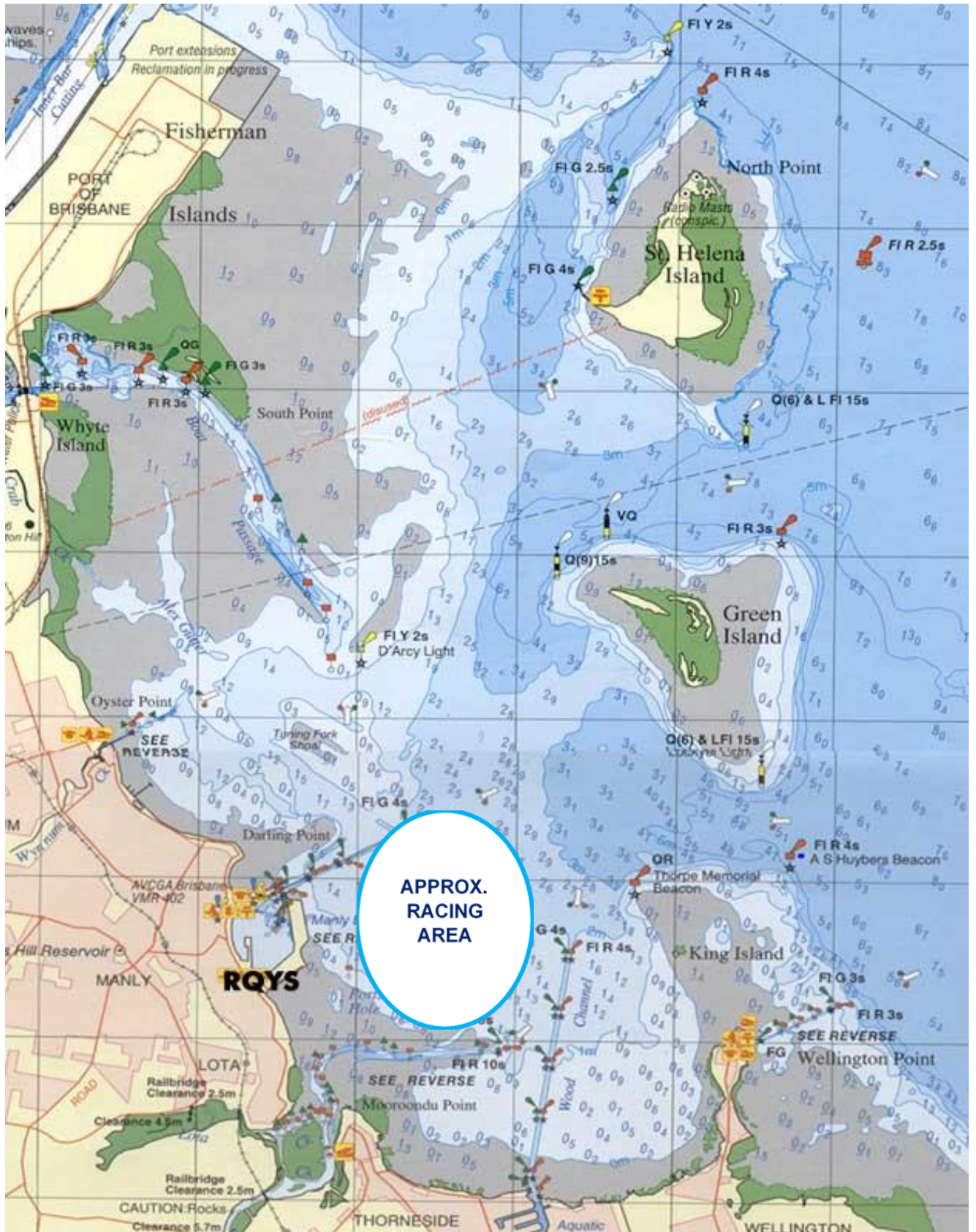
- 25.1. RRS 3 states: 'The responsibility for a boat's decision to participate in a race or to continue to race is hers alone.' By participating in this event each competitor agrees and acknowledges that sailing is a potentially dangerous activity with inherent risks. These risks include strong winds and rough seas, sudden changes in weather, failure of equipment, boat handling errors, poor seamanship by other boats, loss of balance on an unstable platform and fatigue resulting in increased risk of injury. **Inherent in the sport of sailing is the risk of permanent, catastrophic injury or death by drowning, trauma, hypothermia or other causes.**

## **26. INSURANCE**

- 26.1. Each participating boat shall be insured with valid third-party liability insurance with a minimum cover of \$10,000,000AUD per incident or the equivalent.



# SI Attachment A



## SI Attachment B

CODE	COURSE	MARKS DESCRIPTION
LA2	Start – 1 – 2s/2p – 1 – 2p – Finish	<b>Marks 1:</b> Purple Inflatables
LA3	Start – 1 – 2s/2p – 1 – 2s/2p – 1 – 2p – Finish	<b>Marks 2s/2p:</b> Orange Inflatables
		<b>Start Pin &amp; Finish Pin:</b> Orange Teardrops
		<b>Change Mark:</b> Yellow Cylinder

