

THE MANLY COURSE BOOK

FOR DIVISION YACHT AND CATAMARAN BAY RACING



Administered by the Royal Queensland Yacht Squadron (RQYS)
578 Royal Esplanade, MANLY, Queensland 4179
(07) 3396 8666 | sailing@rqys.com.au



DESIGNATED MARKS USED FOR RACING

| | Description | Approximate Position | |
|------|---|----------------------|-----------|
| | Start/Finish – Inside Waterloo Bay East of the Manly Boat Harbour Leads | | |
| MIWG | 2 x West Cardinal Beacons off Mud Island | 27°19.9S | 153°14.0E |
| JRB | Jeay's Reef Buoy - North Cardinal Beacon | 27°18.8S | 153°14.9E |
| MIE | East Cardinal Beacon off Mud Island | 27°20.2S | 153°16.7E |
| NJW | Norman J Wright Beacon (West Cardinal) | 27°25.1S | 153°13.2E |
| SHR | Red Buoy East of St Helena Island | 27°23.2S | 153°15.2E |
| LLS | Lockyer Light South Cardinal Beacon | 27°26.4S | 153°14.5E |
| GIR | Red Beacon NE of Green Island | 27°24.8S | 153°14.6E |
| EE | Eric Early Beacon | 27°37.4S | 153°24.2E |
| HL | Hanlon Light | 27°28.2S | 153°21.0E |
| DL | Douglas Light | 27°29.5S | 153°22.8E |
| GIB | Goat Island Beacon FI Yellow 2s | 27°31.1S | 153°23.1E |
| CY | Yellow Buoy SE of Cleveland Point | 27°30.9S | 153°18.2E |
| ML | Myora Light | 27°28.4S | 153°24.3E |
| OMM | Outer Measured Mile | 27°15.0S | 153°15.1E |
| HYR | Huybers Beacon | 27°26.9S | 153°14.7E |
| CJP | Crawford James Pattison Beacon (Nth Cardinal) | 27°24.9S | 153°13.6E |
| SWR | Green Beacon (QG) S-W Rocks | 27°31.3S | 153°20.6E |
| HBV | FI Y 4s Eastern End Horseshoe Bay | 27°30.3S | 153°22.4E |
| SHN | North Cardinal Beacon St Helena Island | 27°22.2S | 153°14.2E |
| HBI | Hope Banks Beacon | 27°26.0S | 153°17.4E |
| PIG | Green Beacon West of Peel Island | 27°30.26S | 153°19.4E |
| MBG | Green Beacon off Maroom Bank | 27°27.03S | 153°19.5E |
| SAY | Sand Hills Yellow | 27°16.86S | 153°22.9E |
| SHS | South Cardinal Beacon St Helena Island | 27°24.4S | 153°14.4E |
| MHB | Merv Hazell Beacon | 27°33.6S | 153°24.1E |
| HBG | Green Beacon (FI G 2.5s) W Horseshoe Bay | 27°31.3S | 153°21.2E |
| TBR | Thorpe Beacon NW of King Island | 27°27.1S | 153°13.7E |
| PPG | Green Beacon (FI G 2.5s) North of Potts Point | 27°34.3S | 153°21.8E |
| NRB | Green Beacon (FI G 4s) Naval Reserve Banks | 27°27.6S | 153°20.5E |
| LM1 | Bay Laid Mark, located on a bearing from the Start Boat and a nominated distance OR at a GPS position Communicated by the RC from the Start Boat. | | |
| GILM | Laid Mark East of Green Island | 27°25.6S | 153°14.9E |
| MIGW | Mud Island Green | 27°20.5S | 153°13.6E |
| EPB | Empire Point Beacon | 27°29.2S | 153°16.6E |
| MISG | Mud Island Southern Green | 27°21.4S | 153°15.4E |

Manly Course Booklet

| Course Number | Course Marks (Rounding Side) |
|---------------|---|
| 1A | Start – LLS (P) - HBI (P) – SHR (P) – HBI (P) – SHR (P) – SHS (S) – CJP (P) - NJW (P) - Finish |
| 1B | Start – LLS (P) - HBI (P) – SHR (P) – SHS (S) – CJP (P) - NJW (P) - Finish |
| 1C | Start – LLS (P) - HBI (P) – GIR (P) – CJP (P) - NJW (P) - Finish |
| 2A | Start - LLS (P) – HBI (P) – GILM (P) – HBI (P) – SHR (P) - SHS (S) – CJP (P) – NJW (P) - Finish |
| 2B | Start - LLS (P) – HBI (P) – GILM (P) – HBI (P) – GIR (P) – CJP (P) – NJW (P) - Finish |
| 2C | Start - LLS (P) – HBI (P) – GIR (P) – CJP (P) – NJW (P) - Finish |
| 3A | Start - LLS (P) – HBI (S) – CY (P) – HBI (P) – LLS (S) – Finish |
| 4A | Start - LLS (P) – MBG (S) – LLS (S) – Finish |
| 4B | Start - LLS (P) – HBI (S) – LLS (S) – Finish |
| 5A | Start - HYR (S) – EP (P) – HBI (P) – EP (P) – HBI (P) – LLS (S) - Finish |
| 5B | Start - HYR (S) – EP (P) – HBI (P) – LLS (S) - Finish |
| 5C | Start - HYR (S) – EP (P) – HYR (P) - Finish |
| 6A | Start - NJW (S) – CJP (S) – SHS (P)/GIR (S) – LM1 (P) – SHS (S)/GIR (P) – CJP (P) – NJW (P) – Finish |
| 6B | Start - NJW (S) – CJP (S) – SHS (P)/GIR (S) – LM2 (P) – SHS (S)/GIR (P) – CJP (P) – NJW (P) – Finish |
| 6C | Start - NJW (S) – CJP (S) – SHS (P)/GIR (S) – LM3 (P) – SHS (S)/GIR (P) – CJP (P) – NJW (P) – Finish |
| 7A | Start - HYR (S) – PIG (S) – CY (S) - HYR (P) – Finish |
| 7B | Start - HYR (S) – PIG (S) – HYR (P) – Finish |
| 7C | Start - HYR (S) – EP (P) – HYR (P) – Finish |
| 8 | Reserved for Future Use |
| 9 | Reserved for Future Use |
| 10 | Reserved for Future Use |
| 11A | Start - NJW (S) – CJP (S) – GIR (S) – HBI (S) – HL (S) – HBY (P) – HBG (S) – SWR (S) – HYR (P) – Finish |
| 11B | Start - NJW (S) – CJP (S) – GIR (S) – HBI (S) – MBG (S) – HYR (P) – Finish |
| 11C | Start - NJW (S) – CJP (S) – GIR (S) – HBI (S) – LLS (S) – Finish |
| 12A | Start - HYR (S) – HL (S) – HBY (P) – HBG (S) – SWR (S) – HYR (P) – Finish |
| 12B | Start - HYR (S) – MBG (S) – EP (S) – HYR (P) – Finish |
| 12C | Start - HYR (S) – MBG (S) – HYR (P) – Finish |
| 13A | Start - HYR (S) – PIG (S) – SHR (S) – HBI (S) – GIR (P) – CJP (P) – NJW (P) – Finish |
| 13B | Start - HYR (S) – PIG (S) – GIR (P) – CJP (P) – NJW (P) – Finish |
| 13C | Start - HYR (S) – EP (P) – GIR (P) – CJP (P) – NJW (P) – Finish |
| 14A | Start - LLS (P) – HBI (P) – MIE (P) – CY (P) – HBI (P) – LLS (S) – Finish |
| 14B | Start - LLS (P) – HBI (P) – MIE (P) – EP (P) – HBI (P) – LLS (S) – Finish |
| 14C | Start - LLS (P) – HBI (P) – MIE (P) – LLS (S) – Finish |
| 15A | Start – NJW (S) – CJP (S) – GIR (S) – HBI (P) – MIWG (S) – JRB (S) – MIE (S) – HBI (S) – LLS (S) – Finish |
| 15B | Start – NJW (S) – CJP (S) – GIR (S) – HBI (P) – MISG (P) – LLS (S) – Finish |
| 15C | Start – NJW (S) – CJP (S) – GIR (S) – HBI (P) – SHR (P) – LLS (S) – Finish |
| 16A | Start - NJW (S) – CJP (S) – SHS (P) – SAY (P) – MIE (P) – HBI (S) – LLS (S) – Finish |
| 17A | Start - NJW (S) – CJP (S) – SHS (P) – SAY (P) – SHS (S) – CJP (P) – NJW (P) – Finish |
| 18A | Start - NJW(S) - CJP(S) – GIR(S) – HBI(S) – LLS(S) - Finish |
| 19 | Reserved for Future Use |

Manly Course Booklet

Course Book Supplementary Sailing Instructions:

1 – The Use of an “X” Mark (a mark set at 90 degrees to the Start Line, usually upwind) is indicated by the flying of a Green or Red flag on the Start Boat, this flag indicates the rounding of the “X” Mark and shall be inserted in the Course Mark list in between the Start and the first mark of the course.

2 – All Starts are assumed to be inside Waterloo Bay. Where the RC wishes to run a Start East of Green Island the Race Committee may advance the course up to the point at which the Start Line leaves Waterloo Bay by flying an L flag and indicating the next mark on a board on the back of the boat. In this instance the RC need only signal the course and the next mark of the course, all previous marks are to be disregarded. [E.g. Course 11 would become Start - ~~NJW (S)~~ - ~~CJP (S)~~ - ~~GIR (S)~~ - HBI (S) - HL (S) - HBY (P) - HBG (S) - SWR (S) - HYR (P) - Finish]

3 – Where Course Book SI's 1 and 2 are to operate together the Board need only indicate the next Fixed or Laid Mark, the X mark being indicated by the flying of Green or Red flags.

4 – Where the Race Committee wish to run these courses as a “Reverse” they shall indicate the course number followed by a prominent R and indicate as such on Radio. The course shall observe all marks in the opposite order and with the opposing rounding.

EXAMPLE Course 1: Start - NJW (S) - CJP (S) - SHS (P) - SHR (S) - HBI (S) - SHR (S) - HBI (S) - LLS (S) - Finish.

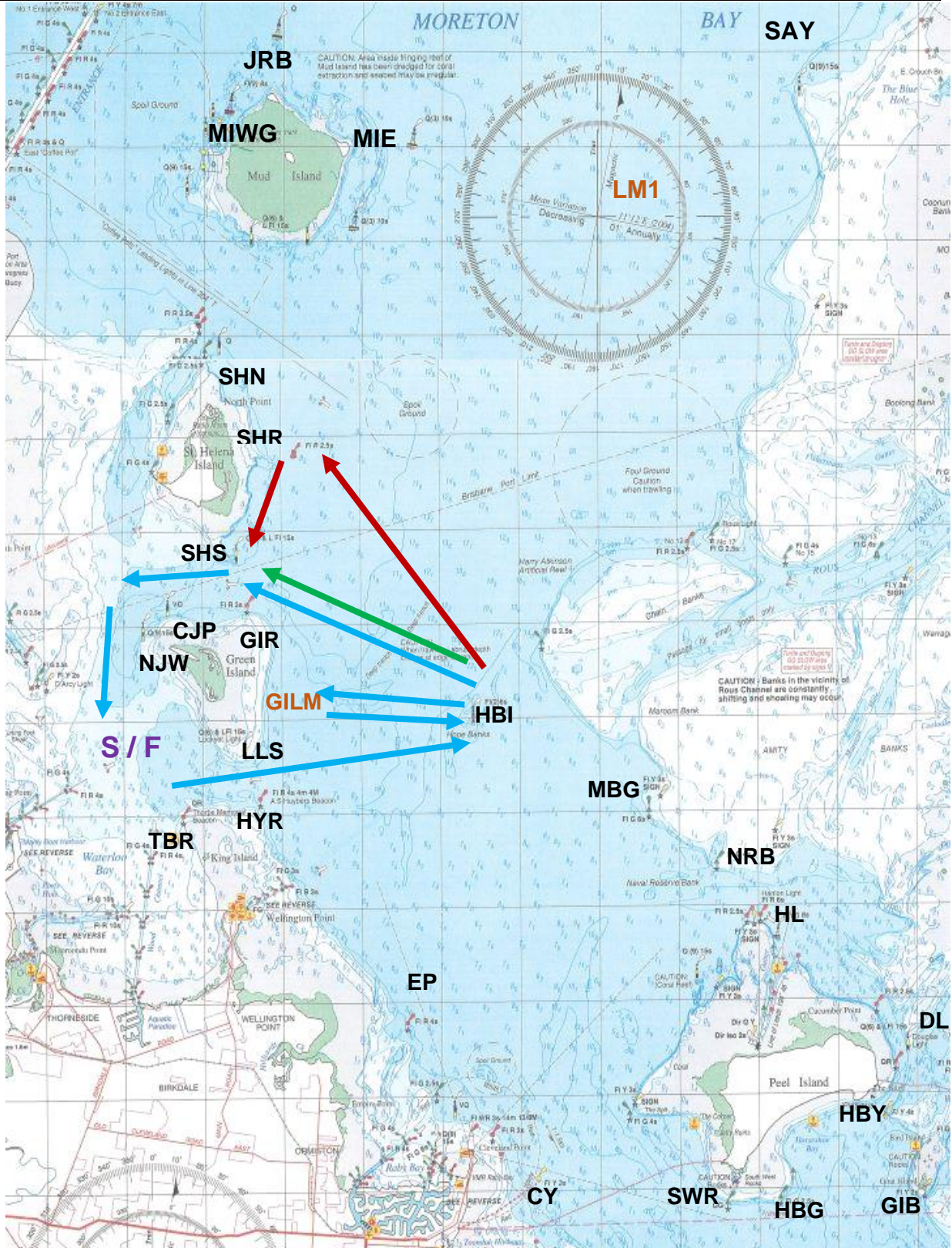
Course Variants (A, B and C):

Standard Course Variant Colors: **A Variant – RED** | **B Variant – BLUE** | **C Variant - Green**

Course arrows only display a different color when differentiating from course variant B (blue).

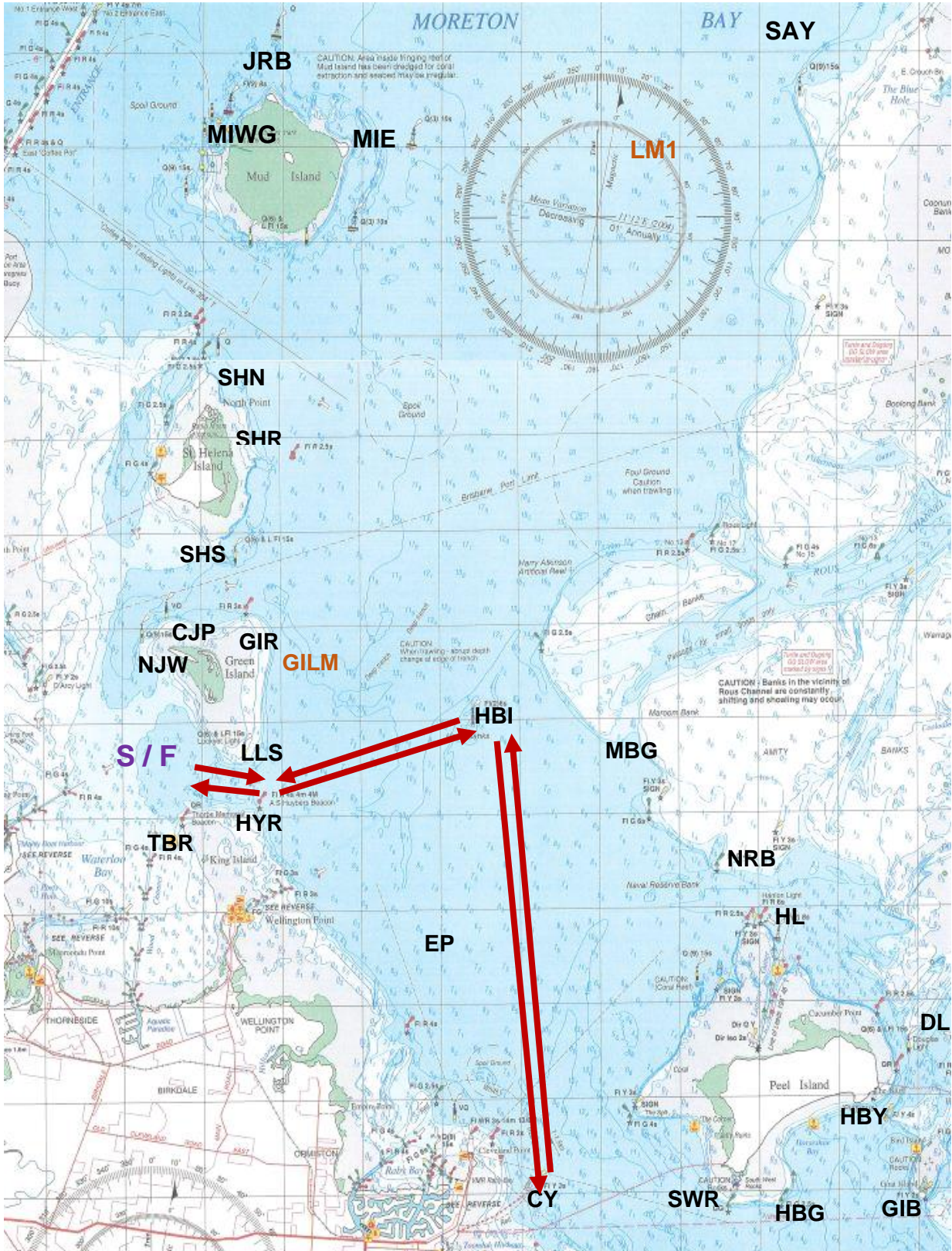
Manly Course Booklet

| | | |
|-----------|--|----|
| 2A | Start - LLS (P) – HBI (P) – GILM (P) – HBI (P) – SHR (P) - SHS (S) – CJP (P) – NJW (P) - Finish | |
| 2B | Start - LLS (P) – HBI (P) – GILM (P) – HBI (P) – GIR (P) – CJP (P) – NJW (P) - Finish | 14 |
| 2C | Start - LLS (P) – HBI (P) – GIR (P) – CJP (P) – NJW (P) - Finish | |



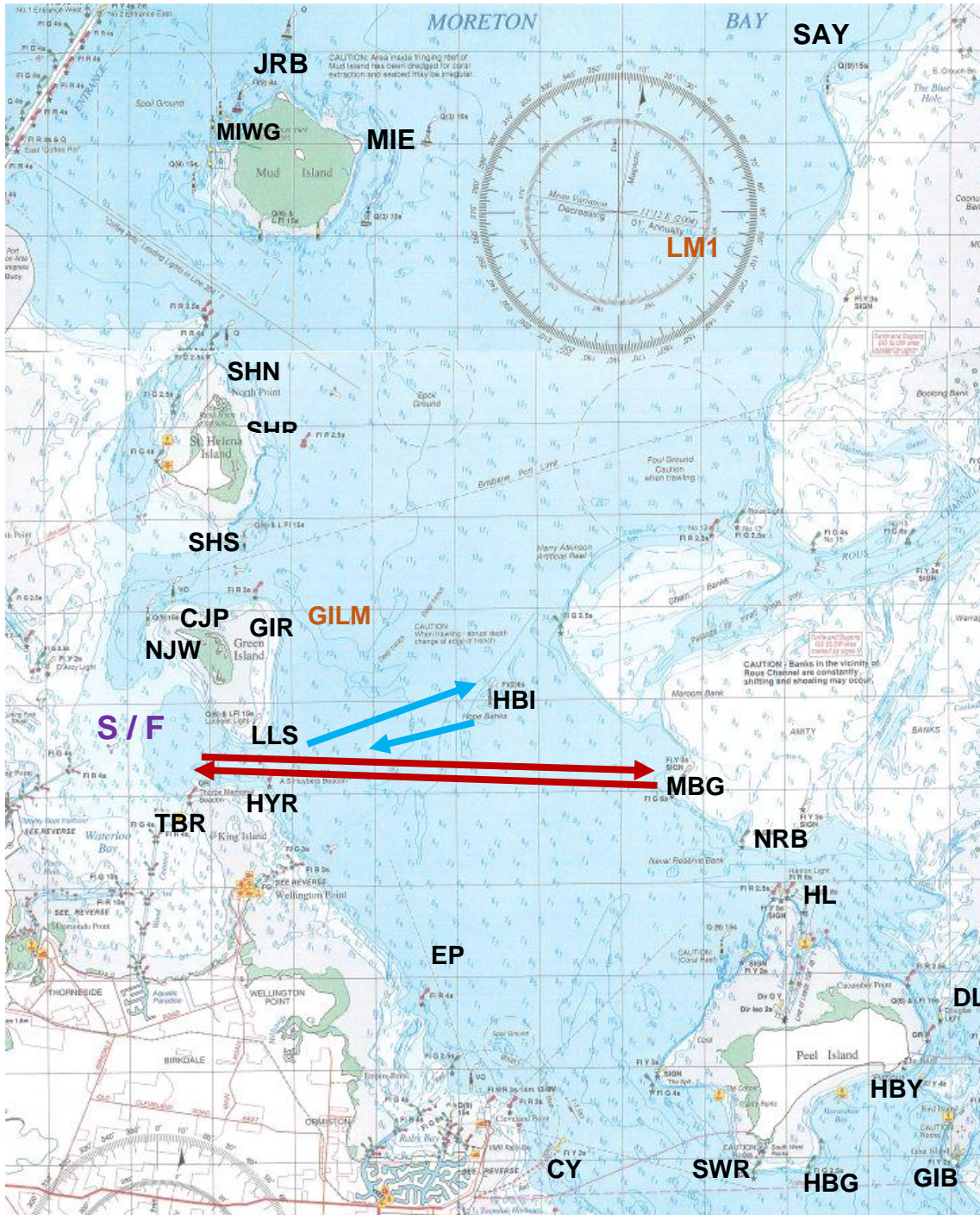
Manly Course Booklet

| | | |
|----|---|------|
| 3A | Start - LLS (P) – HBI (S) – CY (P) – HBI (P) – LLS (S) – Finish | 16.8 |
|----|---|------|



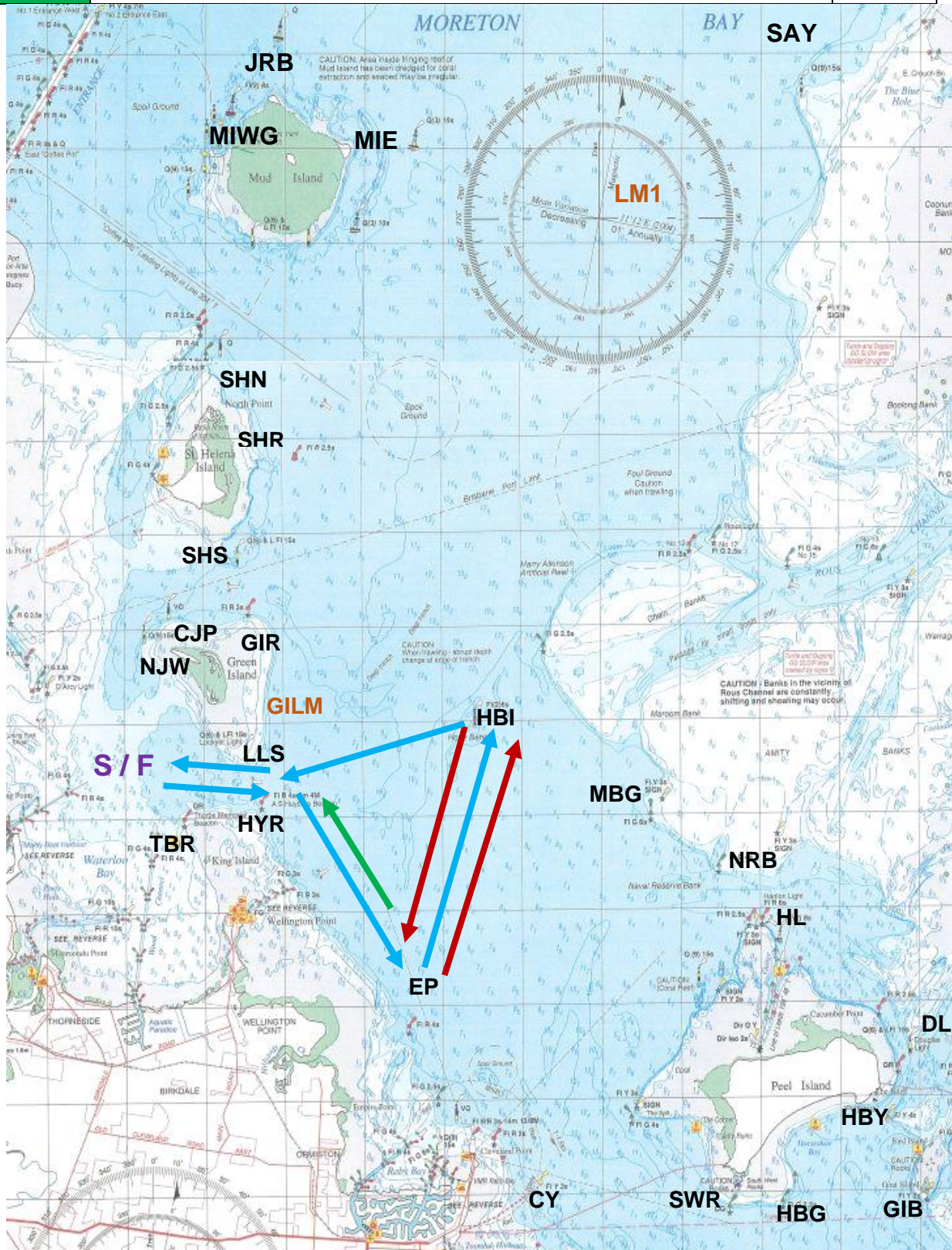
Manly Course Booklet

| | | |
|-----------|--|------|
| 4A | Start - LLS (P) – MBG (S) – LLS (S) – Finish | 11.6 |
| 4B | Start - LLS (P) – HBI (S) – LLS (S) – Finish | |



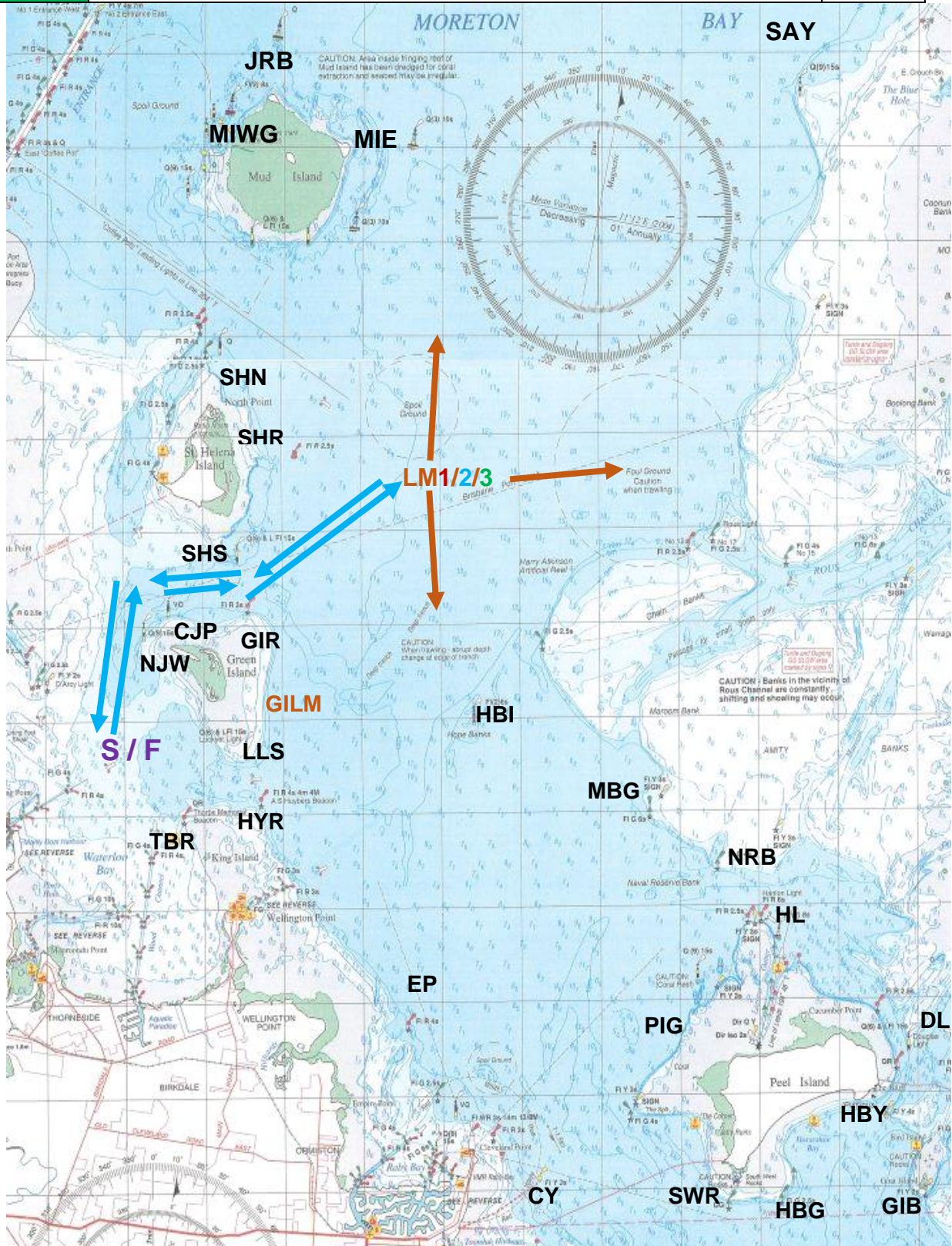
Manly Course Booklet

| | | |
|-----------|--|------|
| 5A | Start - HYR (S) – EP (P) – HBI (P) – EP (P) – HBI (P) – LLS (S) - Finish | 17.8 |
| 5B | Start - HYR (S) – EP (P) – HBI (P) – LLS (S) - Finish | |
| 5C | Start - HYR (S) – EP (P) – HYR (P) - Finish | |



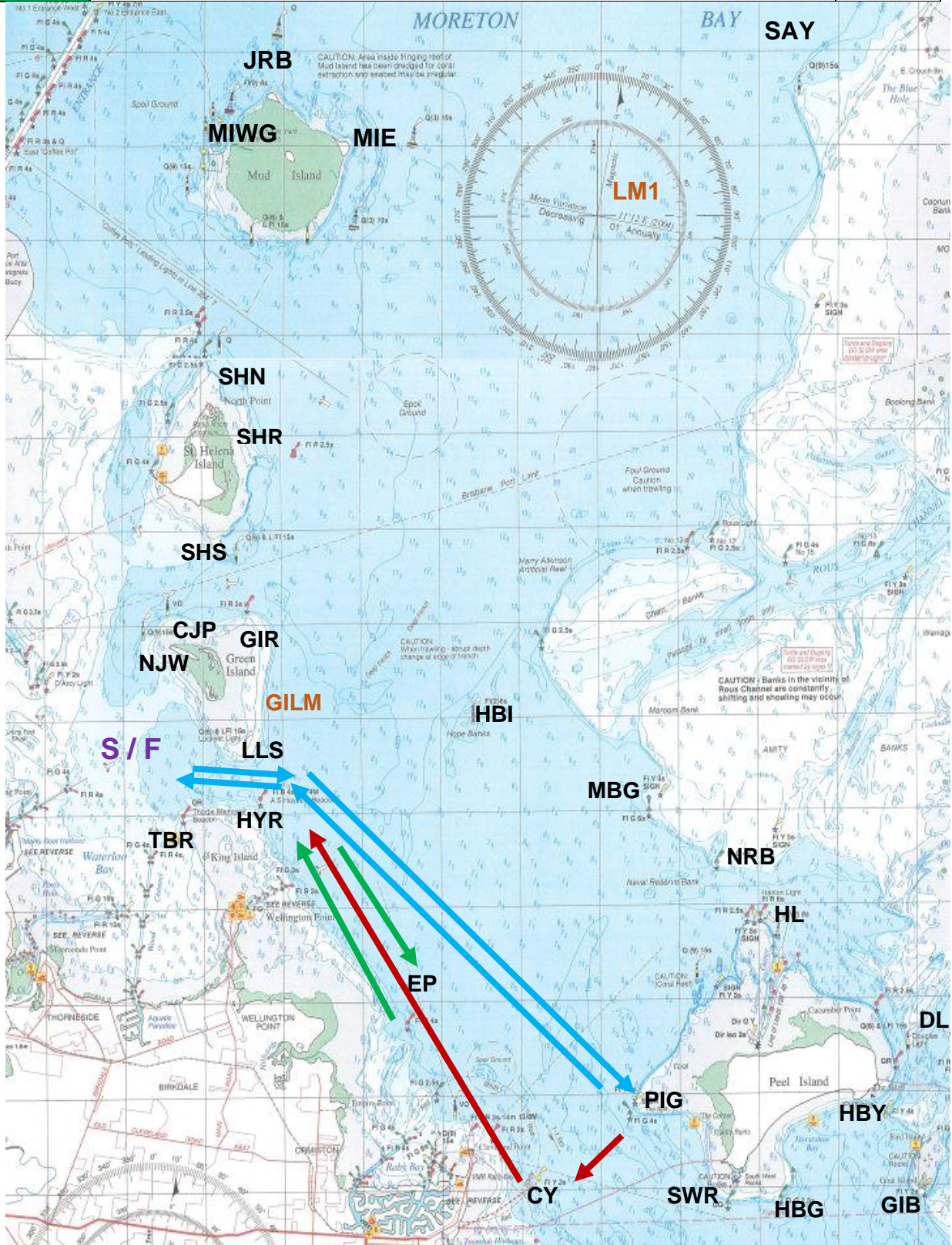
Manly Course Booklet

| | | |
|-----------|---|---|
| 6A | Start - NJW (S) – CJP (S) – SHS (P)/GIR (S) – LM1 (P) – SHS (S)/GIR (P) – CJP (P) – NJW (P) – Finish | - |
| 6B | Start - NJW (S) – CJP (S) – SHS (P)/GIR (S) – LM2 (P) – SHS (S)/GIR (P) – CJP (P) – NJW (P) – Finish | |
| 6C | Start - NJW (S) – CJP (S) – SHS (P)/GIR (S) – LM3 (P) – SHS (S)/GIR (P) – CJP (P) – NJW (P) – Finish | |



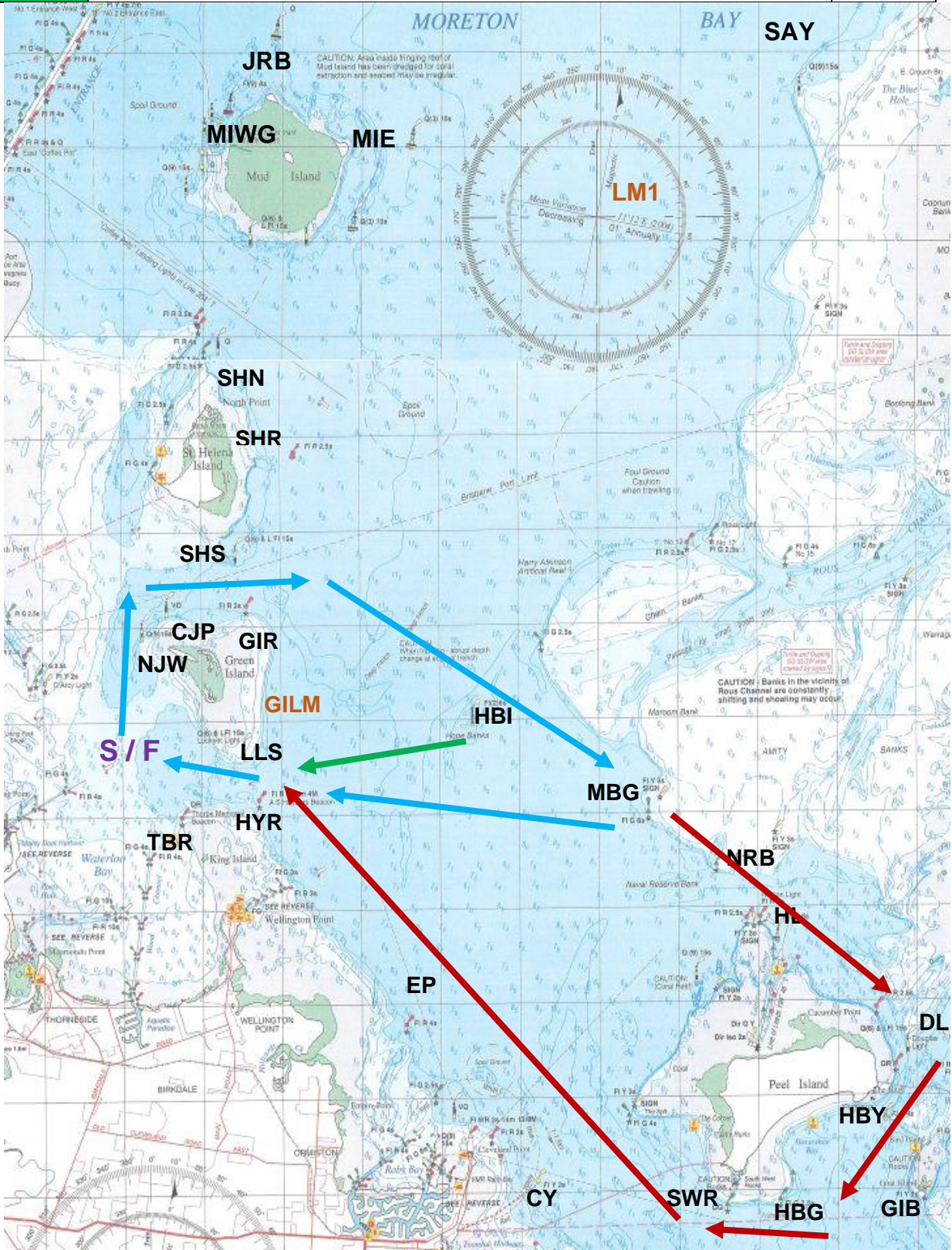
Manly Course Booklet

| | | |
|-----------|---|----|
| 7A | Start - HYR (S) – PIG (S) – CY (S) HYR (P) – Finish | |
| 7B | Start - HYR (S) – PIG (S) – HYR (P) – Finish | 14 |
| 7C | Start - HYR (S) – EP (P) – HYR (P) – Finish | |



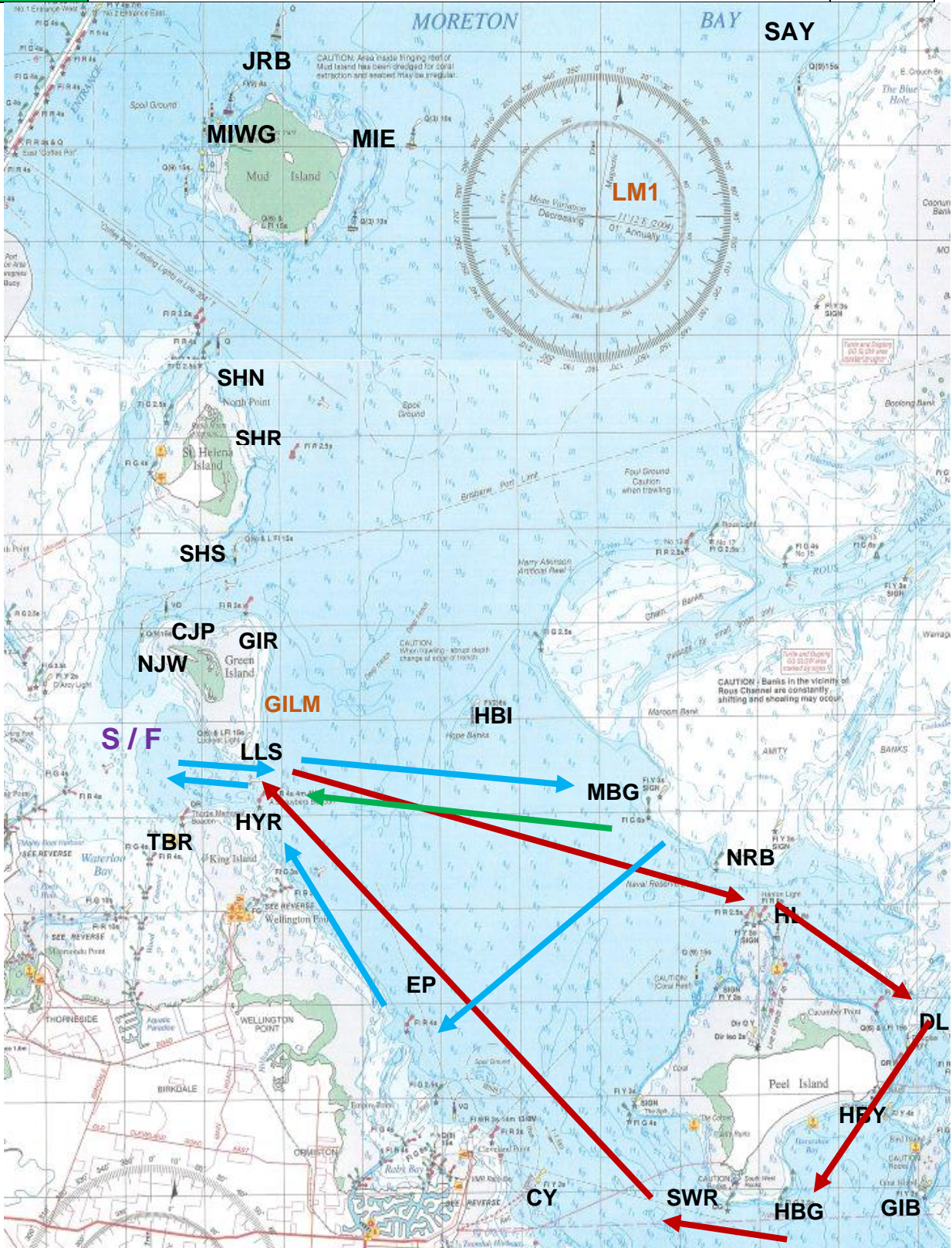
Manly Course Booklet

| | | |
|------------|---|------|
| 11A | Start - NJW (S) – CJP (S) – GIR (S) – HBI (S) – HL (S) – HBY (P) – HBG (S) – SWR (S) – HYR (P) – Finish | 23.5 |
| 11B | Start - NJW (S) – CJP (S) – GIR (S) – HBI (S) – MBG (S) – HYR (P) – Finish | |
| 11C | Start - NJW (S) – CJP (S) – GIR (S) – HBI (S) – LLS (S) – Finish | |



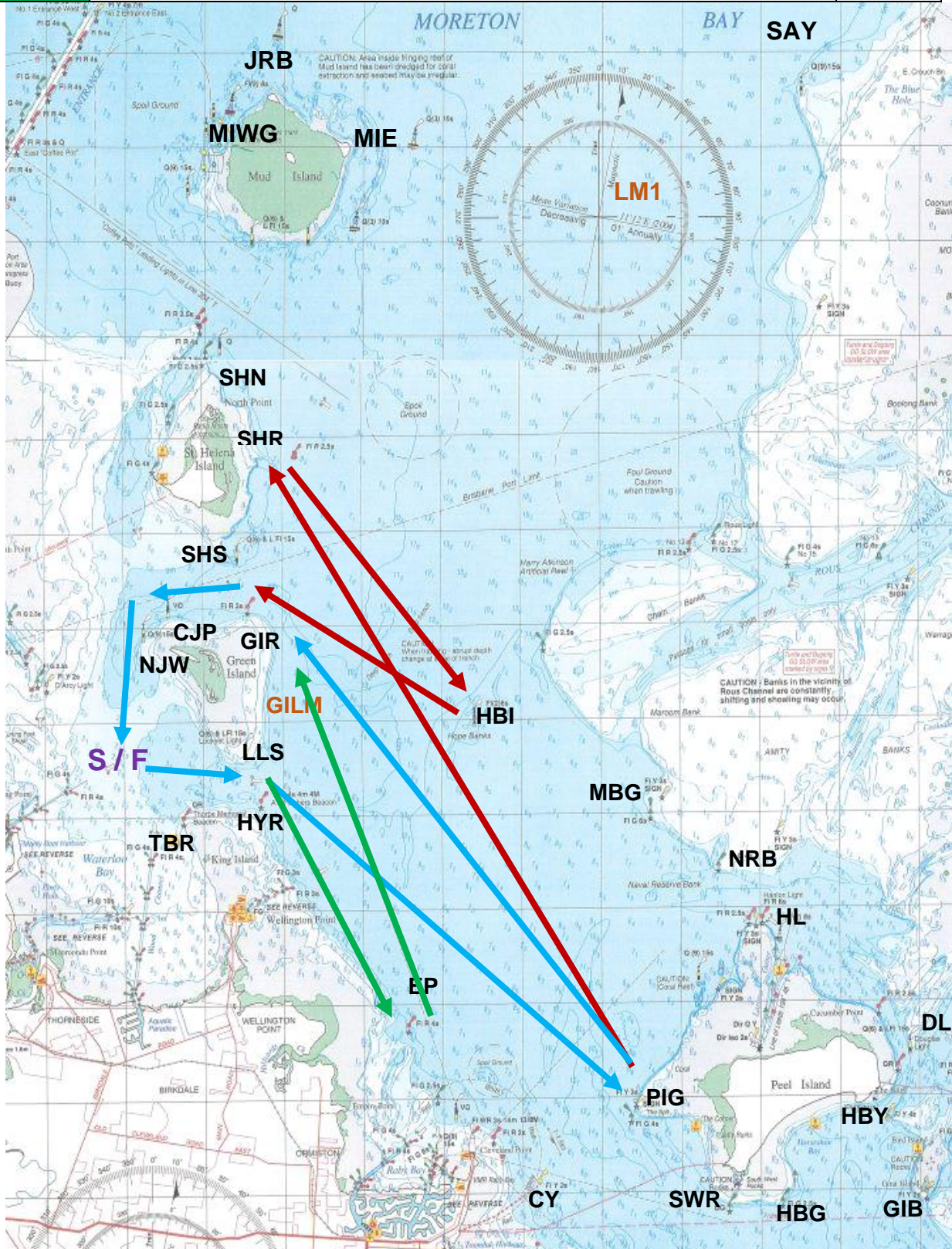
Manly Course Booklet

| | | |
|------------|---|------|
| 12A | Start - HYR (S) – HL (S) – HBY (P) – HBG (S) – SWR (S) – HYR (P) – Finish | 20.5 |
| 12B | Start - HYR (S) – MBG (S) – EP (S) – HYR (P) – Finish | |
| 12C | Start - HYR (S) – MBG (S) – HYR (P) – Finish | |



Manly Course Booklet

| | | |
|------------|--|------|
| 13A | Start - HYR (S) – PIG (S)* – SHR (S) – HBI (S) – GIR (P) – CJP (P) – NJW (P) – Finish *When course 13 is reversed, the PIG rounding shall remain as a STARBOARD rounding. | 24.7 |
| 13B | Start - HYR (S) – PIG (S)* – GIR (P) – CJP (P) – NJW (P) – Finish *When course 13 is reversed, the PIG rounding shall remain as a STARBOARD rounding. | |
| 13C | Start - HYR (S) – EP (P) – GIR (P) – CJP (P) – NJW (P) – Finish | |

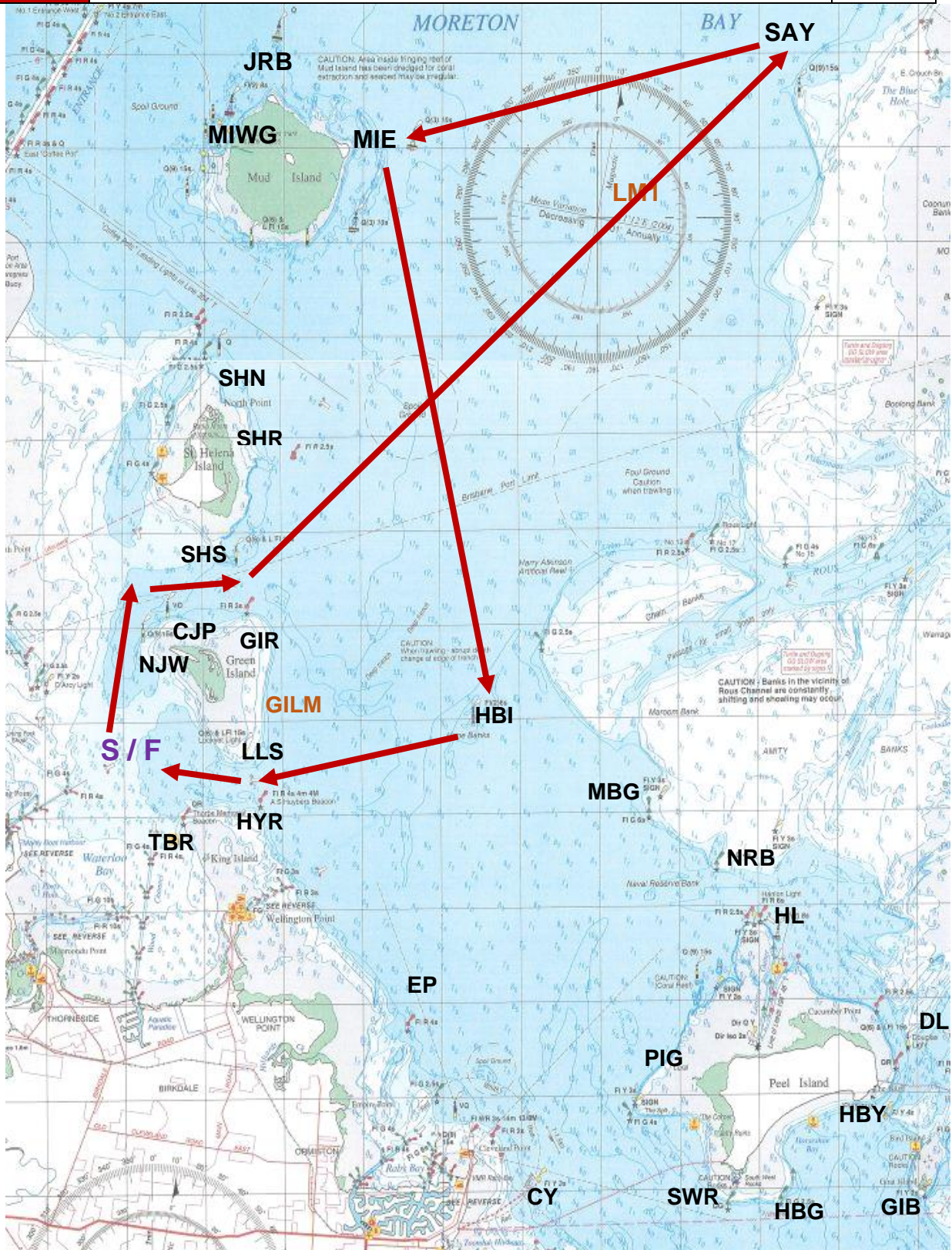


Manly Course Booklet

16A

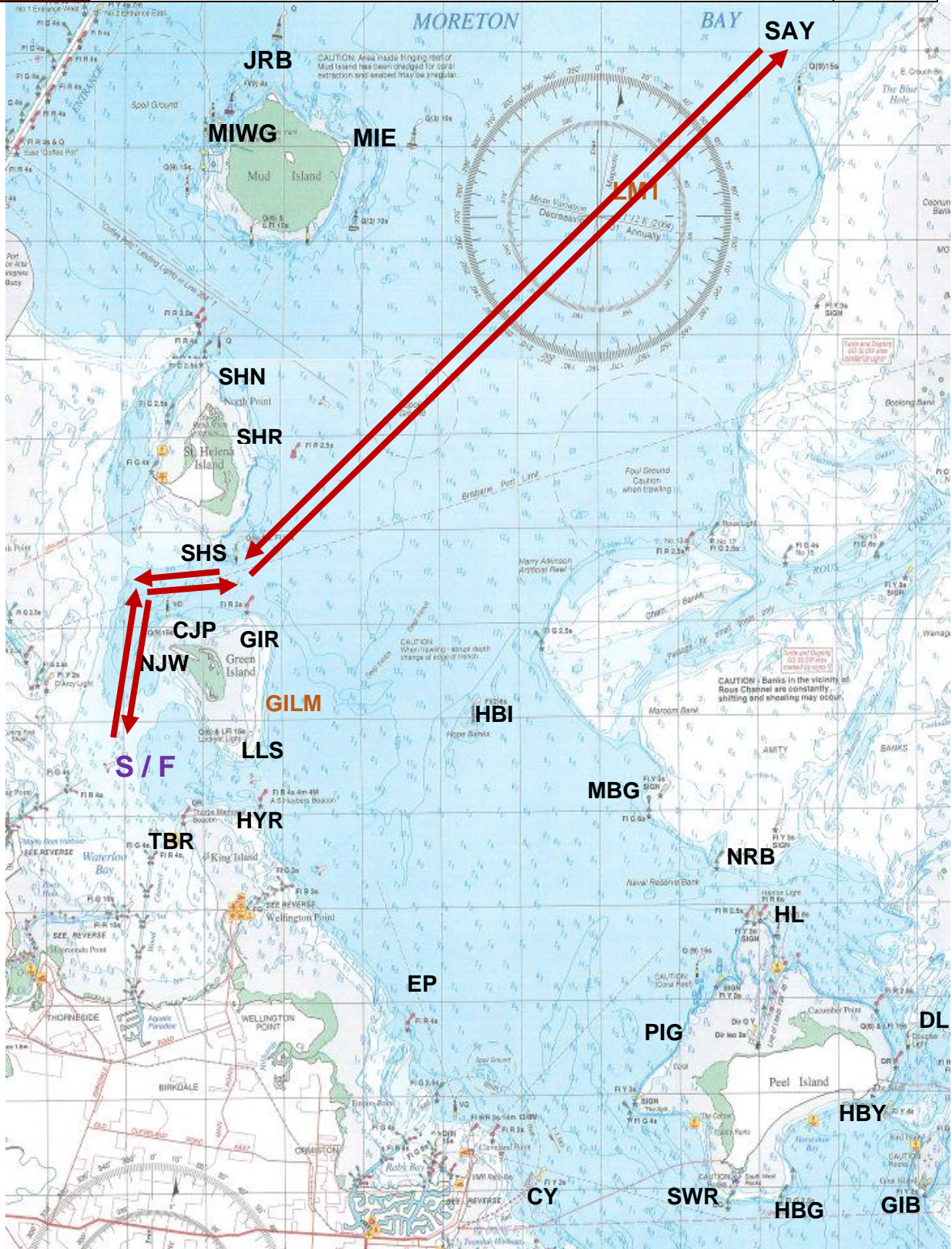
Start - NJW (S) – CJP (S) – SHS (P) – SAY (P) – MIE (P) – HBI (S) – LLS (S) – Finish

32.2



Manly Course Booklet

| | | |
|-----|--|------|
| 17A | Start - NJW (S) – CJP (S) – SHS (P) – SAY (P) – SHS (S) – CJP (P) – NJW (P) – Finish | 30.2 |
|-----|--|------|



Manly Course Booklet

BORED IN A SOFT NORTH-EASTERLY HEADED TOWARDS THE SANDHILLS? DRAW YOUR OWN! WANT TO PAD OUT YOUR TIME PACKING A KITE? DRAW YOUR OWN!!!

| | | |
|----|--|--|
| 19 | | |
|----|--|--|

