

# THE MANLY COURSE BOOK

## FOR DIVISION YACHT AND CATAMARAN BAY RACING



Administered by the Royal Queensland Yacht Squadron (RQYS)  
578 Royal Esplanade, MANLY, Queensland 4179  
(07) 3396 8666 | [sailing@rqys.com.au](mailto:sailing@rqys.com.au)



## DESIGNATED MARKS USED FOR RACING

	Description	Approximate Position	
	Start/Finish – Inside Waterloo Bay East of the Manly Boat Harbour Leads		
MIW	2 x West Cardinal Beacons off Mud Island	27°19.8S	153°13.8E
JRB	Jeay's Reef Buoy - North Cardinal Beacon	27°18.9S	153°14.9E
MIE	East Cardinal Beacon off Mud Island	27°19.9S	153°16.5E
NJW	Norman J Wright Beacon (West Cardinal)	27°25.2S	153°13.2E
SHR	Red Buoy East of St Helena Island	27°23.2S	153°15.2E
LLS	Lockyer Light South Cardinal Beacon	27°26.5S	153°14.4E
GIR	Red Beacon NE of Green Island	27°24.8S	153°14.6E
EE	Eric Early Beacon	27°37.4S	153°24.2E
HL	Hanlon Light	27°28.2S	153°21.0E
DL	Douglas Light	27°29.5S	153°22.8E
GIB	Goat Island Beacon FI Yellow 2s	27°31.2S	153°23.1E
CY	Yellow Buoy SE of Cleveland Point	27°30.9S	153°18.1E
ML	Myora Light	27°28.4S	153°24.2E
OMM	Outer Measured Mile	27°15.0S	153°15.1E
HYR	Huybers Beacon	27°26.9S	153°14.6E
CJP	Crawford James Pattison Beacon (Nth Cardinal)	27°24.7S	153°13.6E
SWR	Green Beacon (QG) S-W Rocks	27°31.3S	153°20.6E
HBV	FI Y 4s Eastern End Horseshoe Bay	27°30.3S	153°22.4E
SHN	North Cardinal Beacon St Helena Island	27°22.3S	153°14.1E
HBI	Hope Banks Beacon	27°26.15S	153°17.4E
PIG	Green Beacon West of Peel Island	27°30.26S	153°19.4E
MBG	Green Beacon off Maroom Bank	27°27.03S	153°19.6E
SAY	Sand Hills Yellow	27°16.86S	153°22.9E
SHS	South Cardinal Beacon St Helena Island	27°24.4S	153°14.4E
MHB	Merv Hazell Beacon	27°33.6S	153°24.1E
HBG	Green Beacon (FI G 2.5s) W Horseshoe Bay	27°31.2S	153°21.8E
TBR	Thorpe Beacon NW of King Island	27°27.2S	153°13.7E
PPG	Green Beacon (FI G 2.5s) North of Potts Point	27°34.3S	153°21.8E
NRB	Green Beacon (FI G 4s) Naval Reserve Banks	27°27.6S	153°20.4E
LM1	Bay Laid Mark, located on a bearing from the Start Boat and a nominated distance OR at a GPS position Communicated by the RC from the Start Boat.		
GILM	Laid Mark East of Green Island	27°25.6S	153°14.9E
MIG	Mud Island Green		
EPB	Empire Point Beacon		
MISG	Mud Island Southern Green	27°21.4S	153°15.4E

## Manly Course Booklet

Course Number	Course Marks (Rounding Side)
1A	Start – LLS (P) - HBI (P) – SHR (P) – HBI (P) – SHR (P) – SHS (S) – CJP (P) - NJW (P) - Finish
1B	Start – LLS (P) - HBI (P) – SHR (P) – SHS (S) – CJP (P) - NJW (P) - Finish
1C	Start – LLS (P) - HBI (P) – GIR (P) – CJP (P) - NJW (P) - Finish
2A	Start - LLS (P) – HBI (P) – GILM (P) – HBI (P) – SHR (P) - SHS (S) – CJP (P) – NJW (P) - Finish
2B	Start - LLS (P) – HBI (P) – GILM (P) – HBI (P) – GIR (P) – CJP (P) – NJW (P) - Finish
2C	Start - LLS (P) – HBI (P) – GIR (P) – CJP (P) – NJW (P) - Finish
3A	Start - LLS (P) – HBI (S) – CY (P) – HBI (P) – LLS (S) – Finish
4A	Start - LLS (P) – MBG (S) – LLS (S) – Finish
4B	Start - LLS (P) – HBI (S) – LLS (S) – Finish
5A	Start - HYR (S) – EPLM (P) – HBI (P) – EPLM (P) – HBI (P) – LLS (S) - Finish
5B	Start - HYR (S) – EPLM (P) – HBI (P) – LLS (S) - Finish
5C	Start - HYR (S) – EPLM (P) – HYR (P) - Finish
6A	Start - NJW (S) – CJP (S) – SHS (P)/GIR (S) – LM1 (P) – SHS (S)/GIR (P) – CJP (P) – NJW (P) – Finish
6B	Start - NJW (S) – CJP (S) – SHS (P)/GIR (S) – LM2 (P) – SHS (S)/GIR (P) – CJP (P) – NJW (P) – Finish
6C	Start - NJW (S) – CJP (S) – SHS (P)/GIR (S) – LM3 (P) – SHS (S)/GIR (P) – CJP (P) – NJW (P) – Finish
7A	Start - HYR (S) – PIG (S) – CY (S) - HYR (P) – Finish
7B	Start - HYR (S) – PIG (S) – HYR (P) – Finish
7C	Start - HYR (S) – EPLM (P) – HYR (P) – Finish
8	Reserved for Future Use
9	Reserved for Future Use
10	Reserved for Future Use
11A	Start - NJW (S) – CJP (S) – GIR (S) – HBI (S) – HL (S) – HBY (P) – HBG (S) – SWR (S) – HYR (P) – Finish
11B	Start - NJW (S) – CJP (S) – GIR (S) – HBI (S) – MBG (S) – HYR (P) – Finish
11C	Start - NJW (S) – CJP (S) – GIR (S) – HBI (S) – LLS (S) – Finish
12A	Start - HYR (S) – HL (S) – HBY (P) – HBG (S) – SWR (S) – HYR (P) – Finish
12B	Start - HYR (S) – MBG (S) – EPLM (S) – HYR (P) – Finish
12C	Start - HYR (S) – MBG (S) – HYR (P) – Finish
13A	Start - HYR (S) – PIG (S) – SHR (S) – HBI (S) – GIR (P) – CJP (P) – NJW (P) – Finish
13B	Start - HYR (S) – PIG (S) – GIR (P) – CJP (P) – NJW (P) – Finish
13C	Start - HYR (S) – EPLM (P) – GIR (P) – CJP (P) – NJW (P) – Finish
14A	Start - LLS (P) – HBI (P) – MIE (P) – CY (P) – HBI (P) – LLS (S) – Finish
14B	Start - LLS (P) – HBI (P) – MIE (P) – EPLM (P) – HBI (P) – LLS (S) – Finish
14C	Start - LLS (P) – HBI (P) – MIE (P) – LLS (S) – Finish
15A	Start – NJW (S) – CJP (S) – GIR (S) – HBI (P) – MIW (S) – JRB (S) – MIE (S) – HBI (S) – LLS (S) — Finish
15B	Start – NJW (S) – CJP (S) – GIR (S) – HBI (P) – MISG (P) – LLS (S) — Finish
15C	Start – NJW (S) – CJP (S) – GIR (S) – HBI (P) – SHR (P) – LLS (S) — Finish
16A	Start - NJW (S) – CJP (S) – SHS (P) – SAY (P) – MIE (P) – HBI (S) – LLS (S) – Finish
17A	Start - NJW (S) – CJP (S) – SHS (P) – SAY (P) – SHS (S) – CJP (P) – NJW (P) – Finish
18A	Start - NJW(S) - CJP(S) – GIR(S) – HBI(S) – LLS(S) - Finish
19	Reserved for Future Use

## Manly Course Booklet

### Course Book Supplementary Sailing Instructions:

**1** – The Use of an “X” Mark (a mark set at 90 degrees to the Start Line, usually upwind) is indicated by the flying of a Green or Red flag on the Start Boat, this flag indicates the rounding of the “X” Mark and shall be inserted in the Course Mark list in between the Start and the first mark of the course.

**2** – All Starts are assumed to be inside Waterloo Bay. Where the RC wishes to run a Start East of Green Island the Race Committee may advance the course up to the point at which the Start Line leaves Waterloo Bay by flying an L flag and indicating the next mark on a board on the back of the boat. In this instance the RC need only signal the course and the next mark of the course, all previous marks are to be disregarded. [E.g. Course 11 would become Start - ~~NJW (S)~~ - ~~CJP (S)~~ - ~~GIR (S)~~ - HBI (S) - HL (S) - HBY (P) - HBG (S) - SWR (S) - HYR (P) - Finish]

**3** – Where Course Book SI's 1 and 2 are to operate together the Board need only indicate the next Fixed or Laid Mark, the X mark being indicated by the flying of Green or Red flags.

**4** – Where the Race Committee wish to run these courses as a “Reverse” they shall indicate the course number followed by a prominent R and indicate as such on Radio. The course shall observe all marks in the opposite order and with the opposing rounding.

EXAMPLE Course 1: Start – NJW (S) – CJP (S) – SHS (P) – SHR (S) – HBI (S) – SHR (S) – HBI (S) – LLS (S) – Finish.

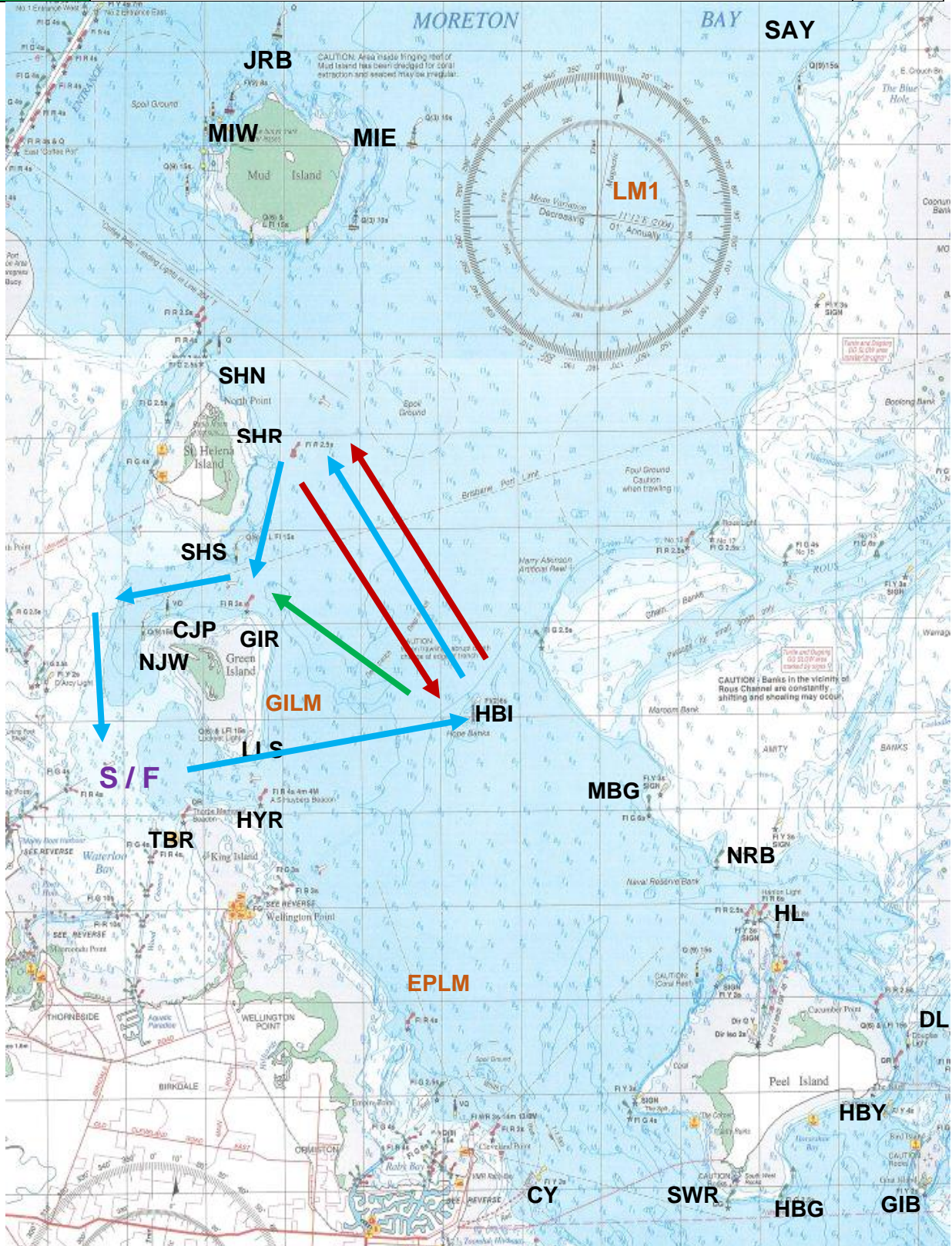
### Course Variants (A, B and C):

Standard Course Variant Colors: **A Variant – RED** | **B Variant – BLUE** | **C Variant - Green**

Course arrows only display a different color when differentiating from course variant B (blue).

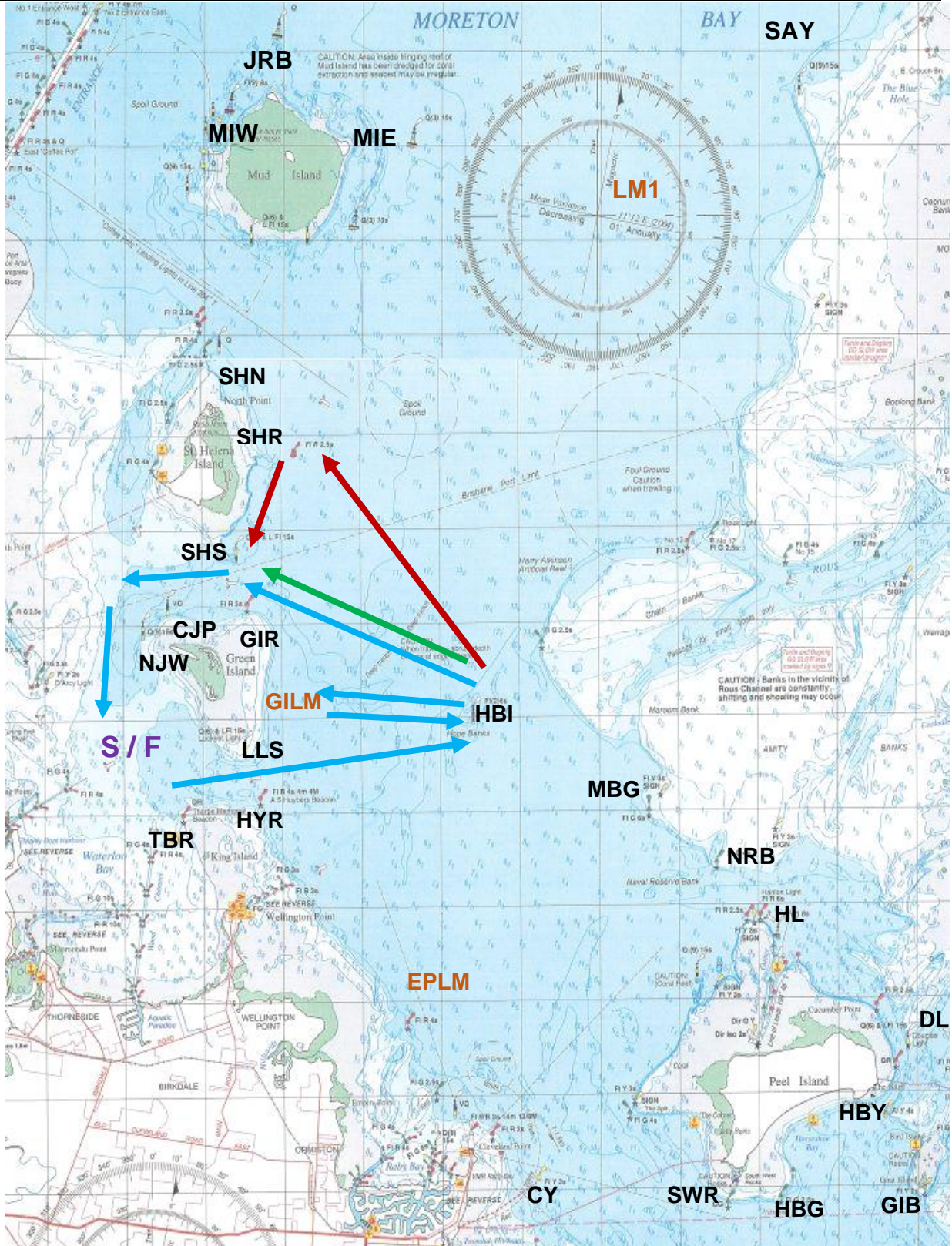
# Manly Course Booklet

<b>1A</b>	Start – LLS (P) - HBI (P) – SHR (P) – HBI (P) – SHR (P) – SHS (S) – CJP (P) - NJW (P) - Finish	18.1
<b>1B</b>	Start – LLS (P) - HBI (P) – SHR (P) – SHS (S) – CJP (P) - NJW (P) - Finish	
<b>1C</b>	Start – LLS (P) - HBI (P) – GIR (P) – CJP (P) - NJW (P) - Finish	



# Manly Course Booklet

<b>2A</b>	Start - LLS (P) – HBI (P) – GILM (P) – HBI (P) – SHR (P) - SHS (S) – CJP (P) – NJW (P) - Finish	
<b>2B</b>	Start - LLS (P) – HBI (P) – <b>GILM (P)</b> – HBI (P) – GIR (P) – CJP (P) – NJW (P) - Finish	14
<b>2C</b>	Start - LLS (P) – HBI (P) – GIR (P) – CJP (P) – NJW (P) - Finish	

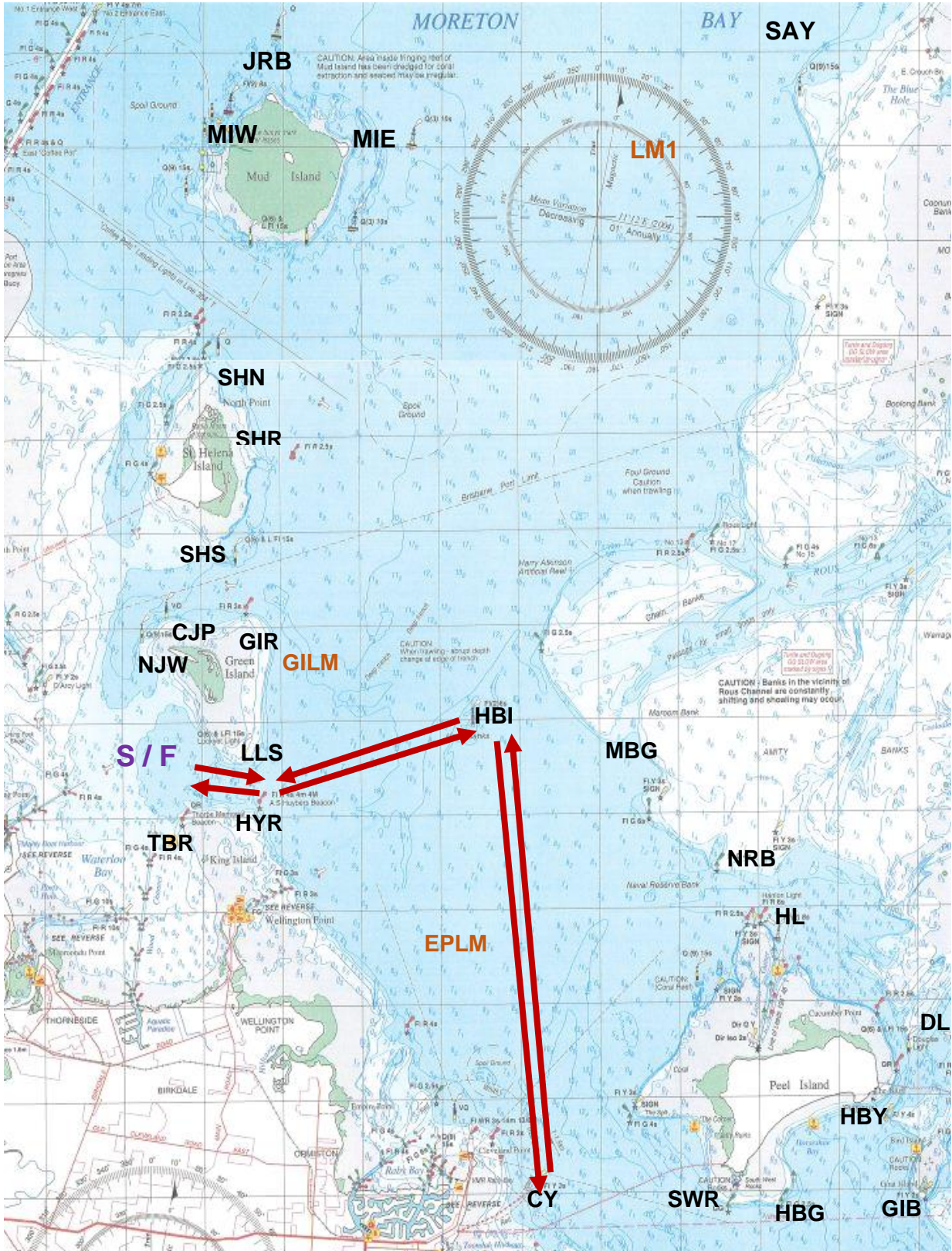


# Manly Course Booklet

3A

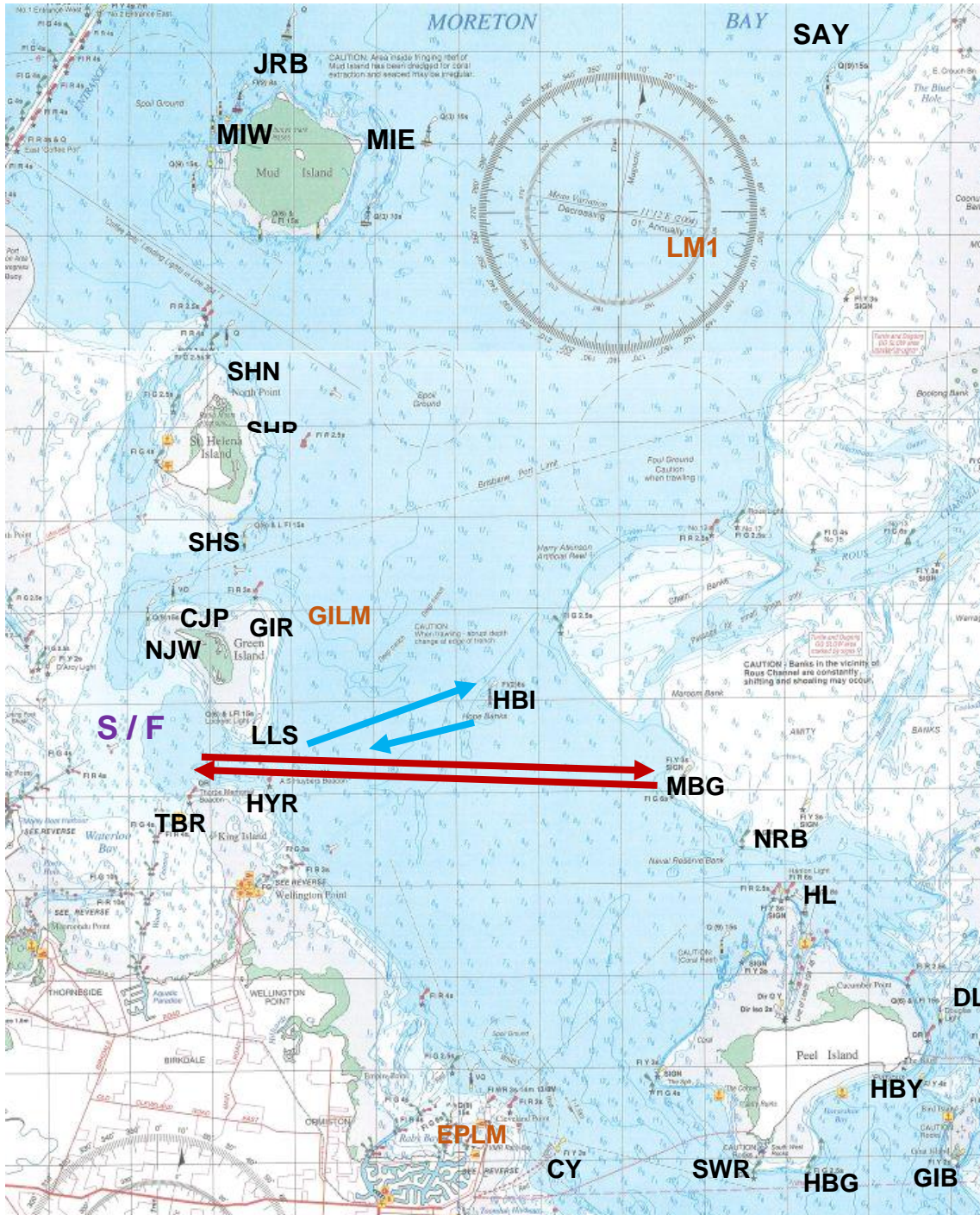
Start - LLS (P) – HBI (S) – CY (P) – HBI (P) – LLS (S) – Finish

16.8



# Manly Course Booklet

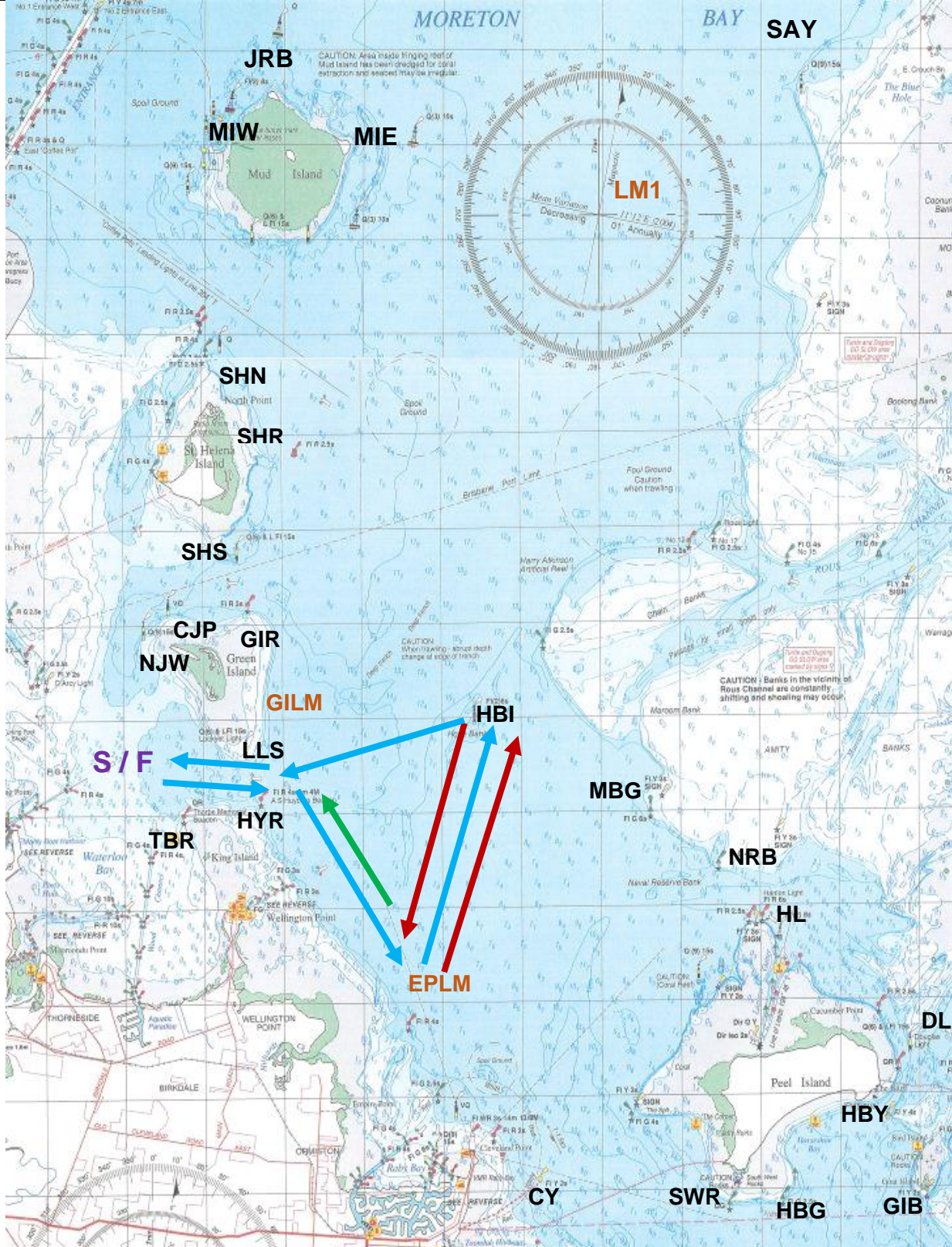
4A	Start - LLS (P) – MBG (S) – LLS (S) – Finish	11.6
4B	Start - LLS (P) – HBI (S) – LLS (S) – Finish	





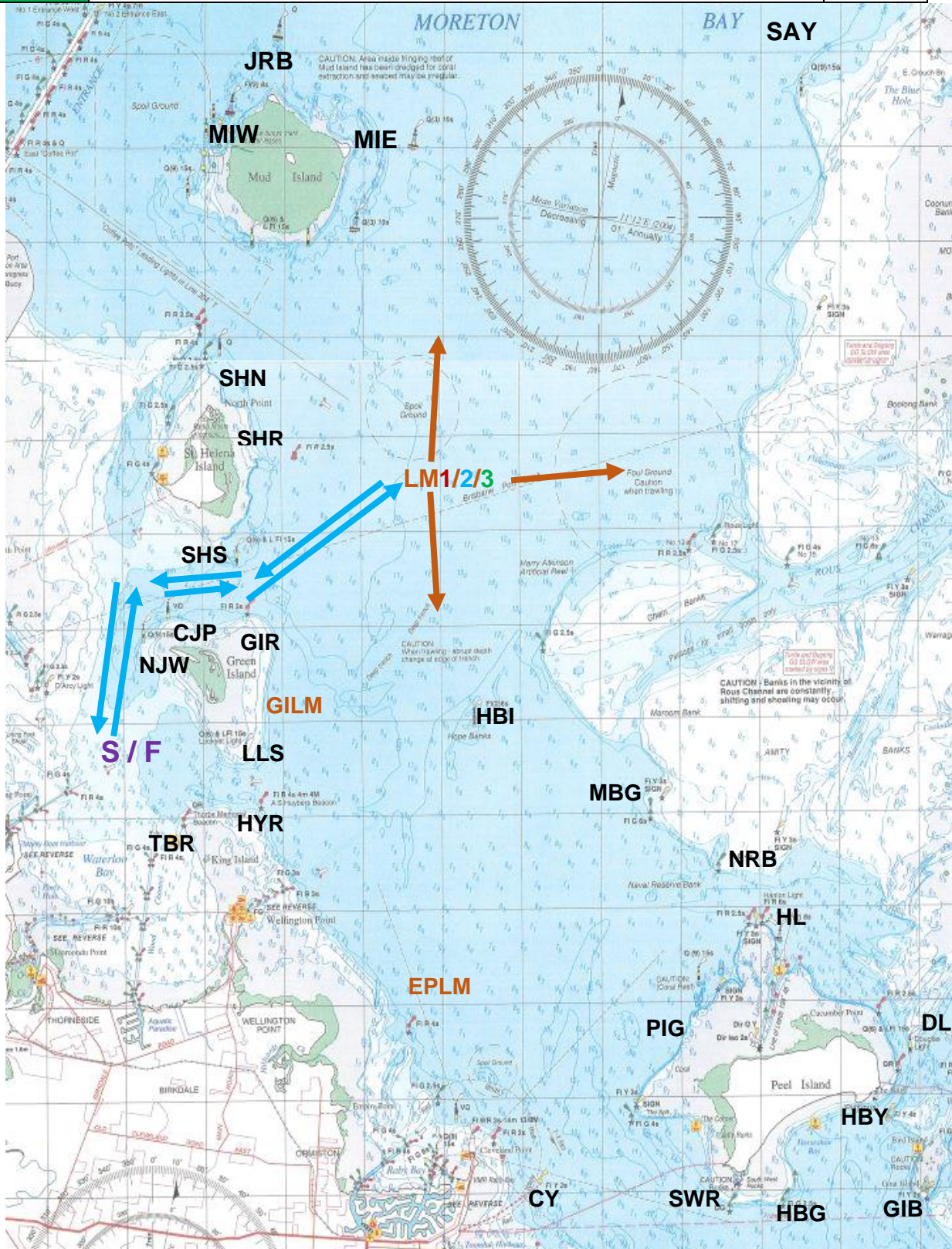
# Manly Course Booklet

<b>5A</b>	Start - HYR (S) – EPLM (P) – HBI (P) – EPLM (P) – HBI (P) – LLS (S) - Finish	17.8
<b>5B</b>	Start - HYR (S) – EPLM (P) – HBI (P) – LLS (S) - Finish	
<b>5C</b>	Start - HYR (S) – EPLM (P) – HYR (P) - Finish	



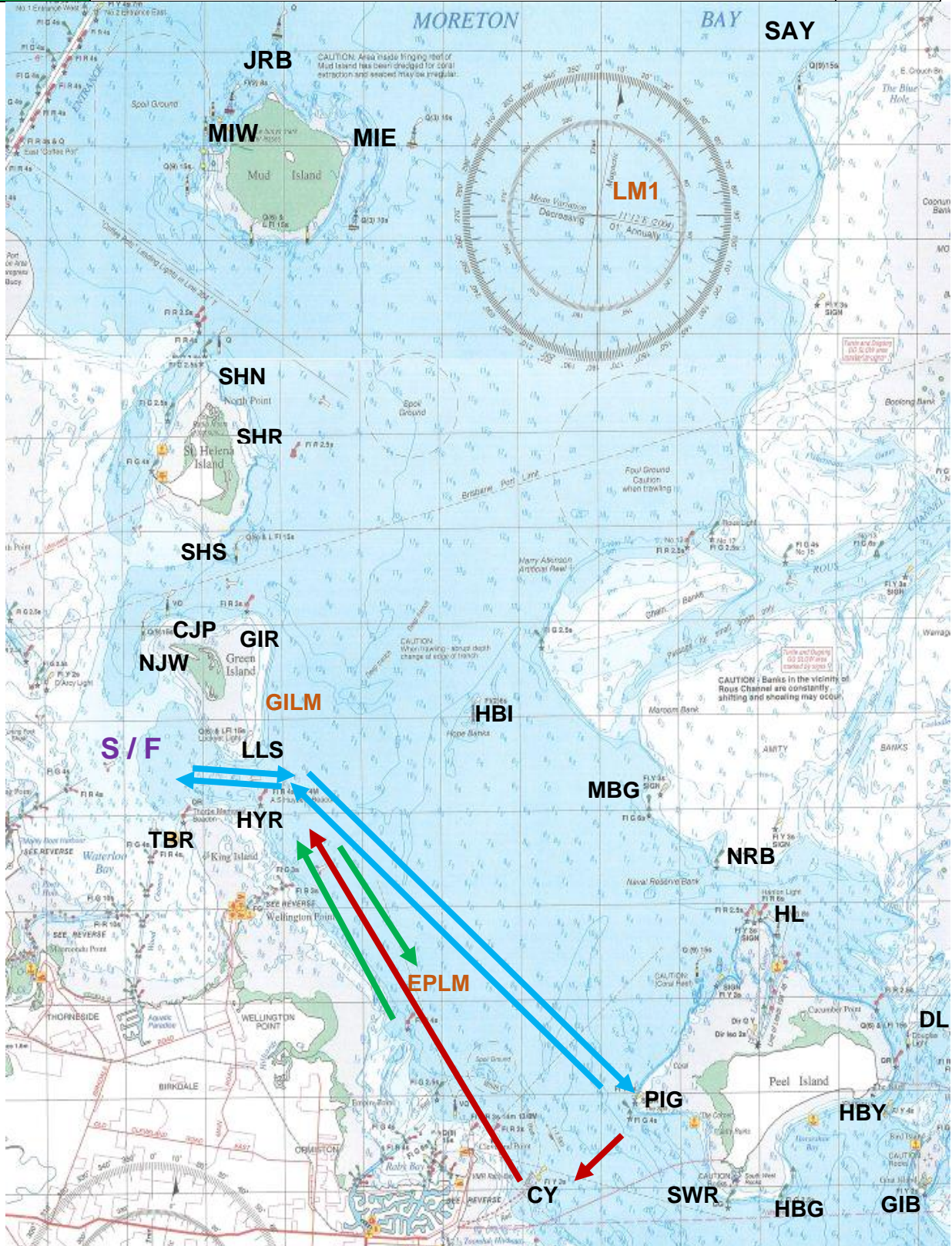
# Manly Course Booklet

<b>6A</b>	Start - NJW (S) – CJP (S) – SHS (P)/GIR (S) – <b>LM1</b> (P) – SHS (S)/GIR (P) – CJP (P) – NJW (P) – Finish	-
<b>6B</b>	Start - NJW (S) – CJP (S) – SHS (P)/GIR (S) – <b>LM2</b> (P) – SHS (S)/GIR (P) – CJP (P) – NJW (P) – Finish	
<b>6C</b>	Start - NJW (S) – CJP (S) – SHS (P)/GIR (S) – <b>LM3</b> (P) – SHS (S)/GIR (P) – CJP (P) – NJW (P) – Finish	



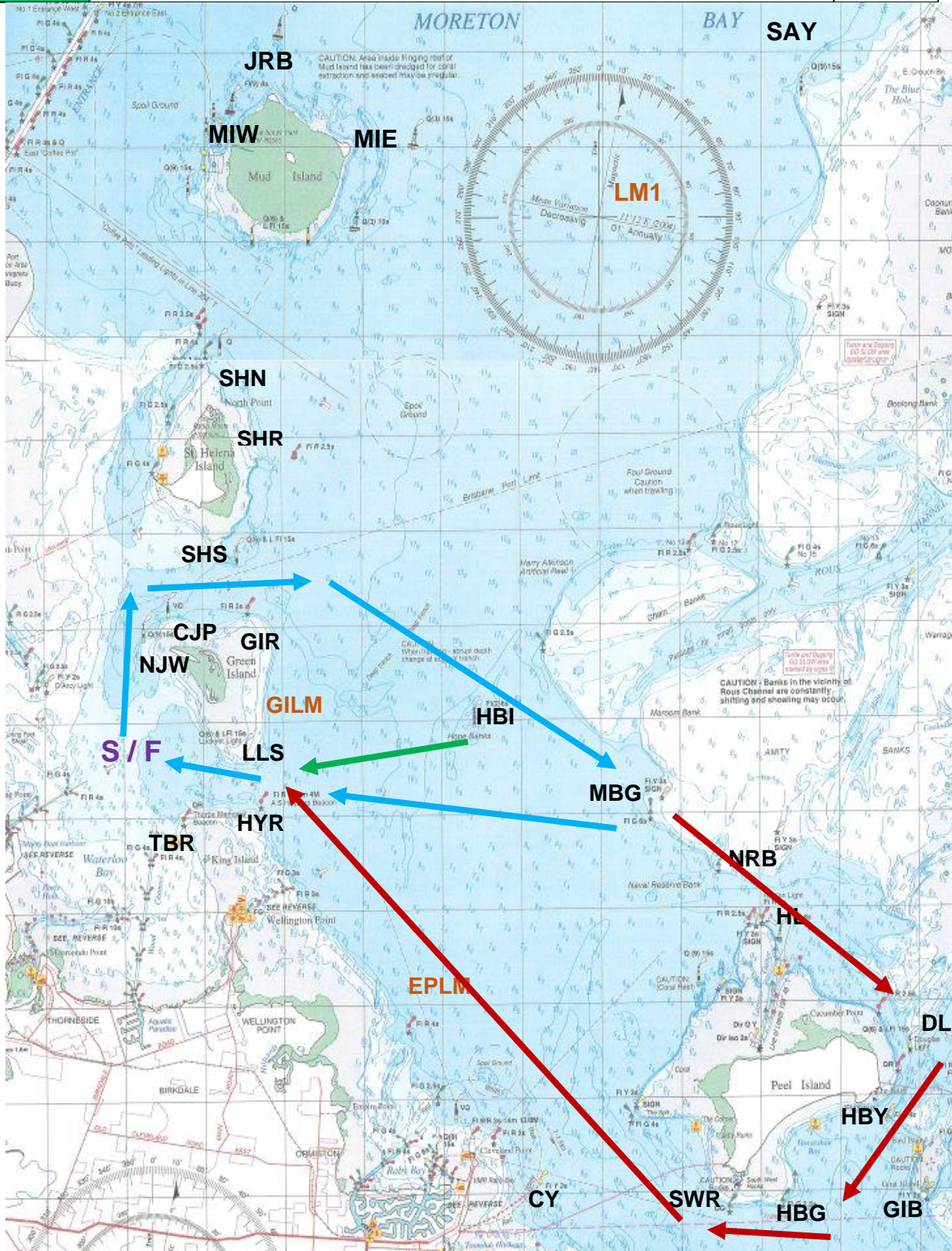
# Manly Course Booklet

<b>7A</b>	Start - HYR (S) – PIG (S) – CY (S) HYR (P) – Finish	
<b>7B</b>	Start - HYR (S) – PIG (S) – HYR (P) – Finish	14
<b>7C</b>	Start - HYR (S) – EPLM (P) – HYR (P) – Finish	



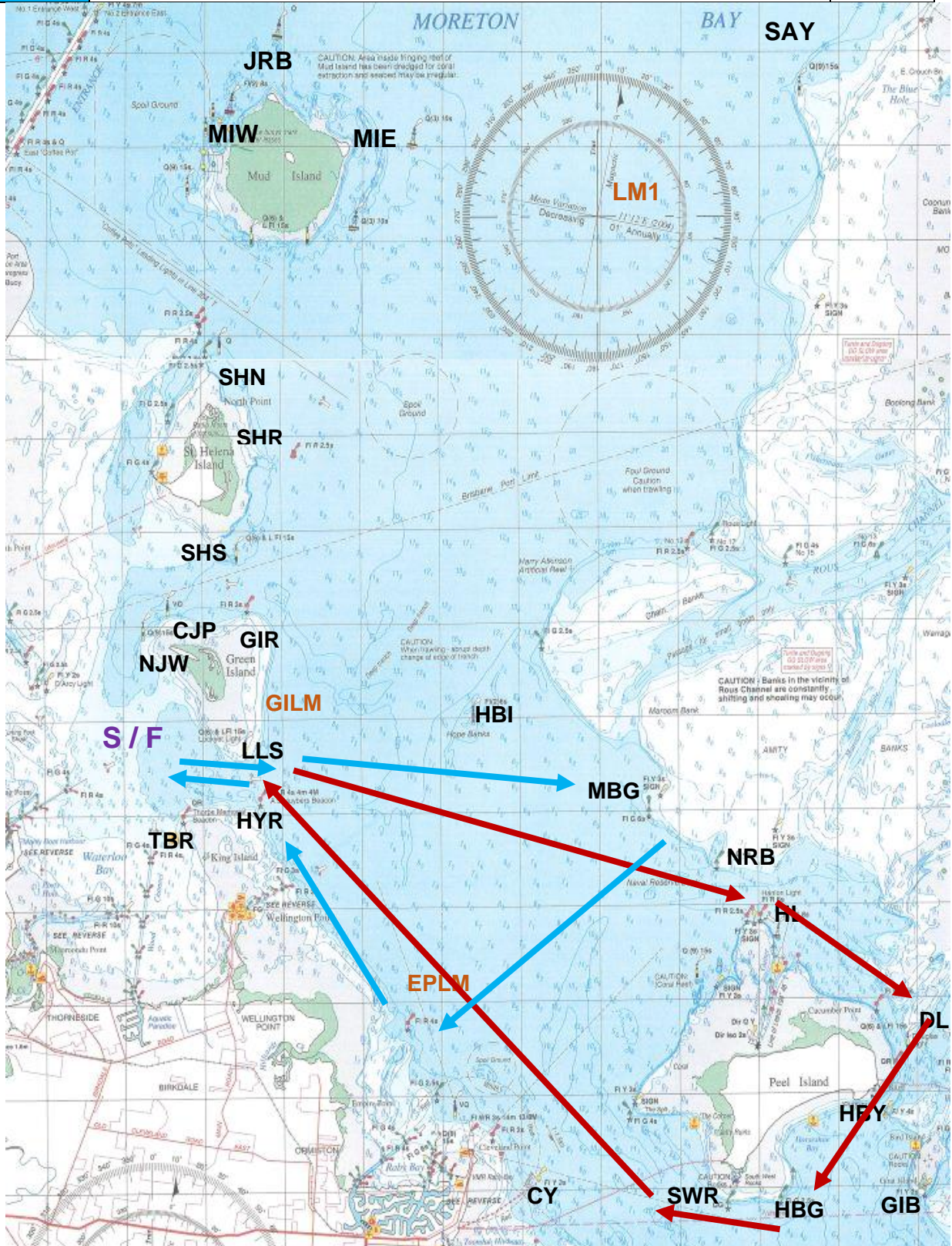
# Manly Course Booklet

<b>11A</b>	Start - NJW (S) – CJP (S) – GIR (S) – HBI (S) – HL (S) – HBY (P) – HBG (S) – SWR (S) – HYR (P) – Finish	23.5
<b>11B</b>	Start - NJW (S) – CJP (S) – GIR (S) – HBI (S) – MBG (S) – HYR (P) – Finish	
<b>11C</b>	Start - NJW (S) – CJP (S) – GIR (S) – HBI (S) – LLS (S) – Finish	



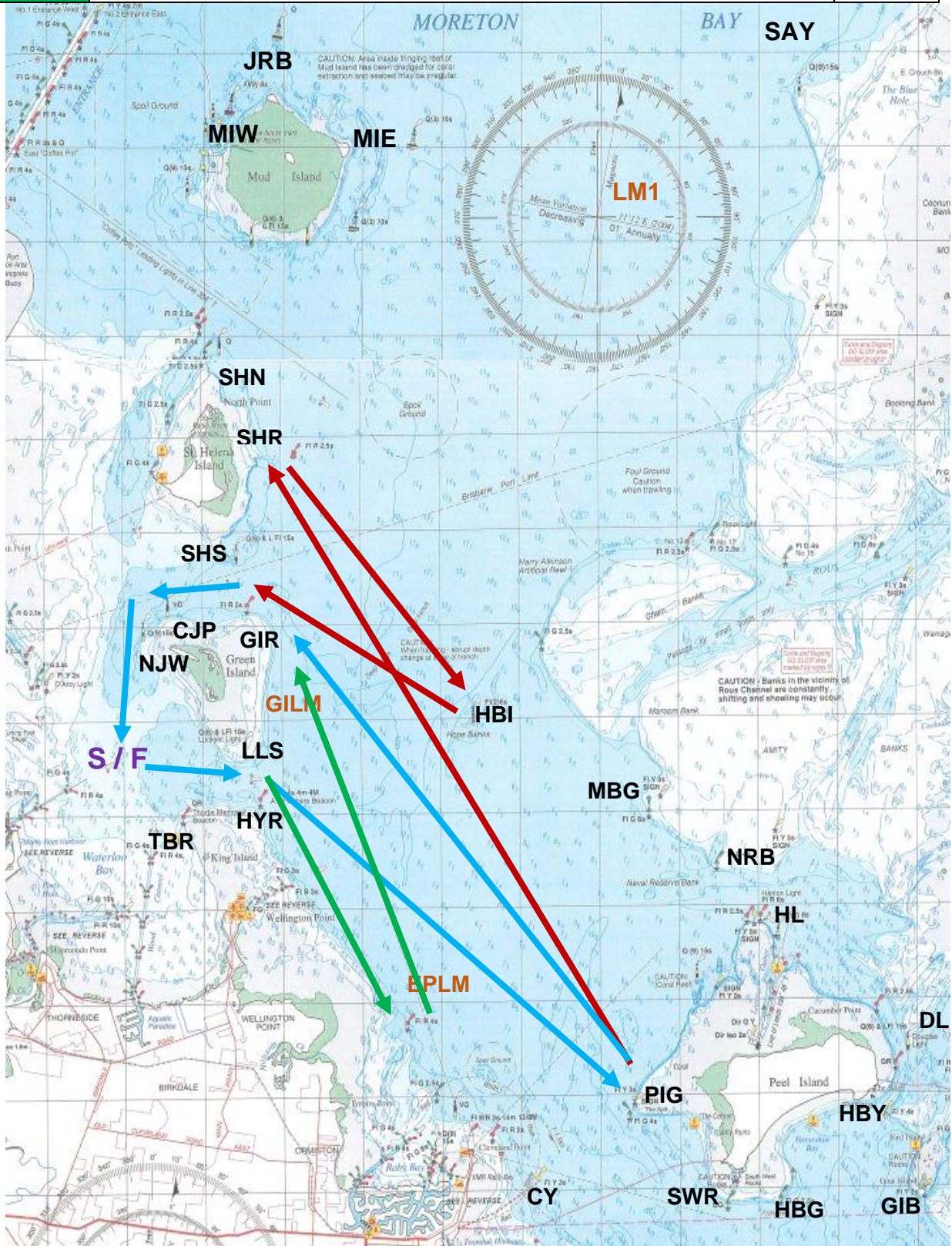
# Manly Course Booklet

12A	Start - HYR (S) – HL (S) – HBY (P) – HBG (S) – SWR (S) – HYR (P) – Finish	20.5
12B	Start - HYR (S) – MBG (S) – EPLM (S) – HYR (P) – Finish	



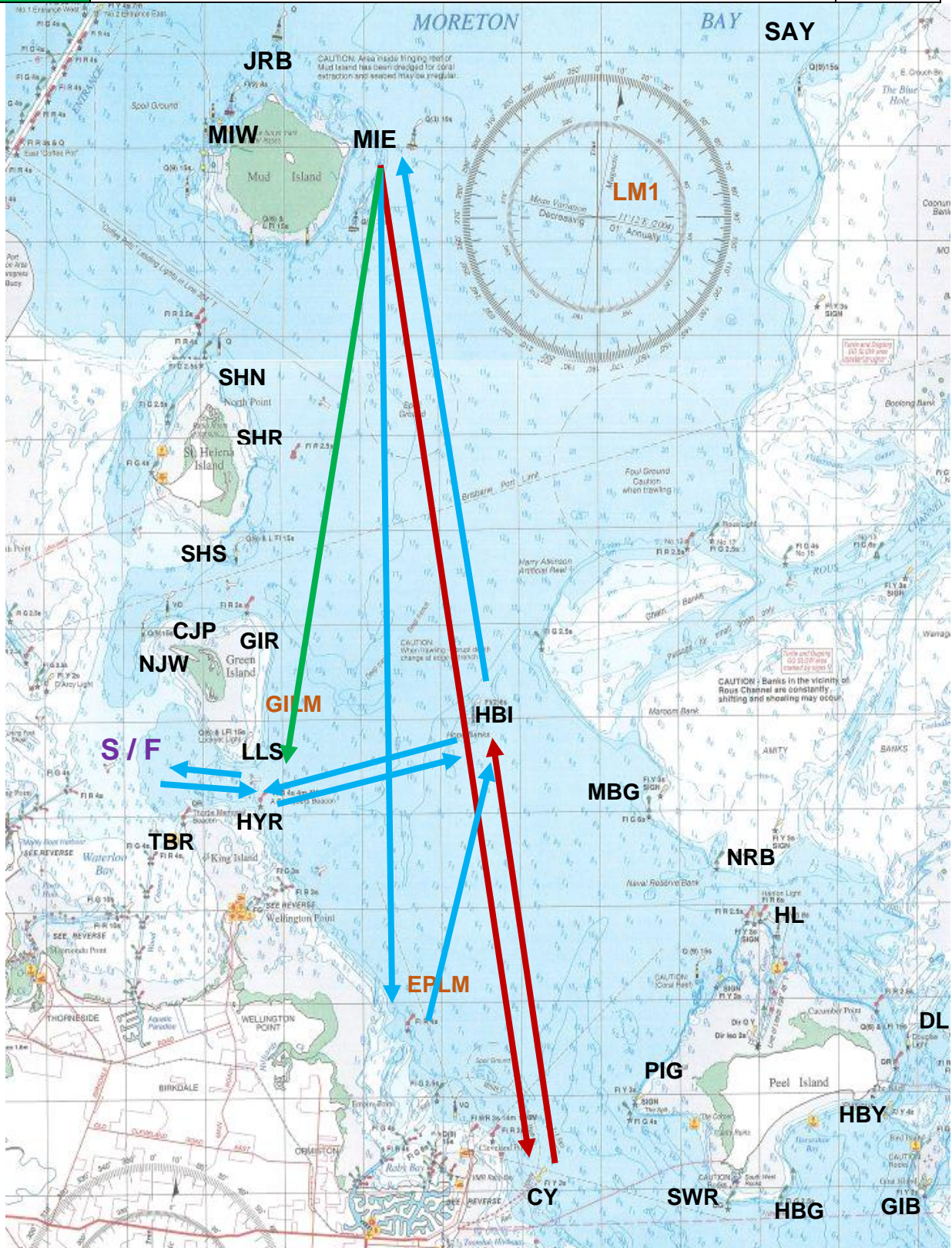
# Manly Course Booklet

<b>13A</b>	Start - HYR (S) – PIG (S)* – SHR (S) – HBI (S) – GIR (P) – CJP (P) – NJW (P) – Finish *When course 13 is reversed, the PIG rounding shall remain as a STARBOARD rounding.	24.7
<b>13B</b>	Start - HYR (S) – PIG (S)* – GIR (P) – CJP (P) – NJW (P) – Finish *When course 13 is reversed, the PIG rounding shall remain as a STARBOARD rounding.	
<b>13C</b>	Start - HYR (S) – EPLM (P) – GIR (P) – CJP (P) – NJW (P) – Finish	



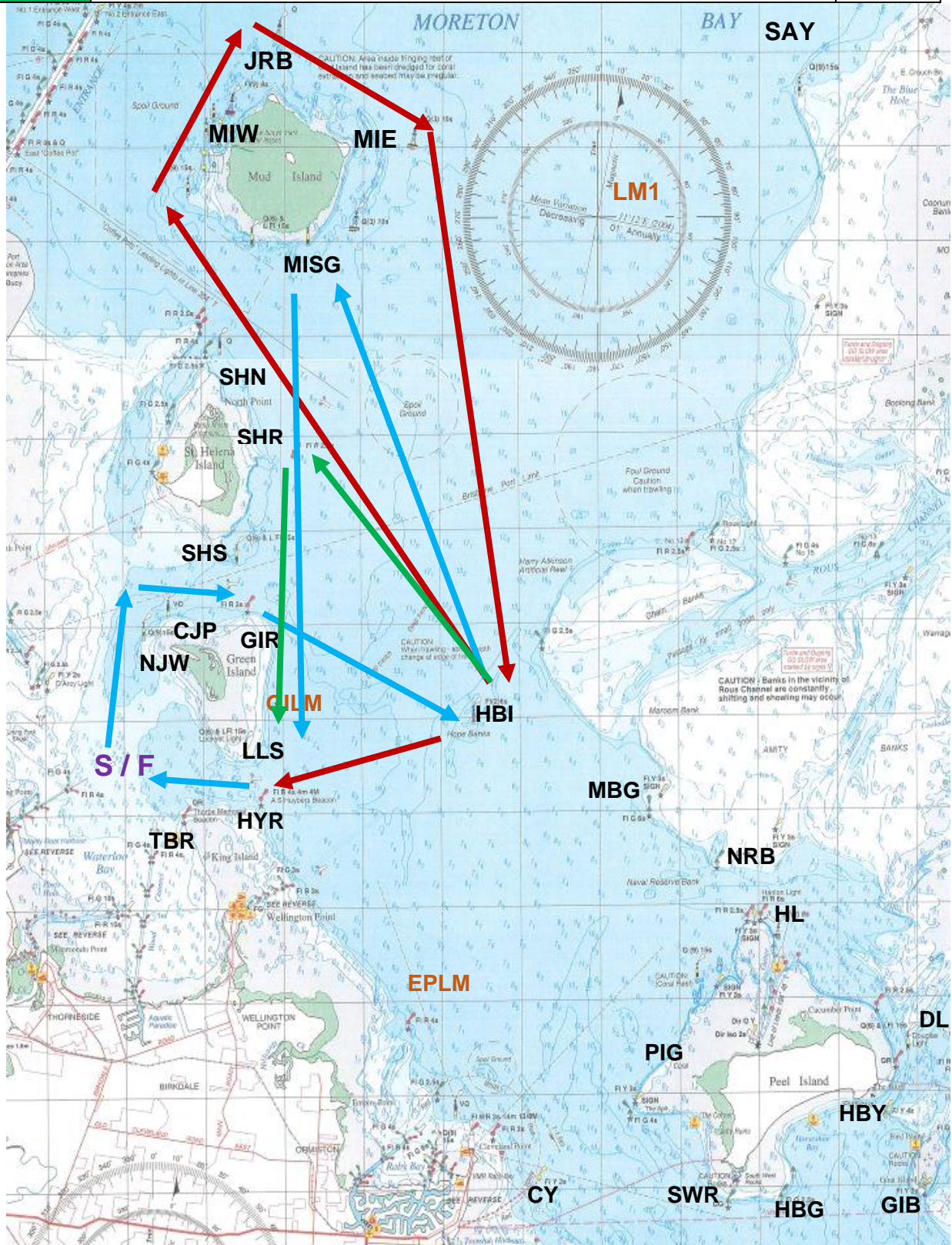
# Manly Course Booklet

<b>14A</b>	Start - LLS (P) – HBI (P) – MIE (P) – CY (P) – HBI (P) – LLS (S) – Finish	29.3
<b>14B</b>	Start - LLS (P) – HBI (P) – MIE (P) – EPLM (P) – HBI (P) – LLS (S) – Finish	
<b>14C</b>	Start - LLS (P) – HBI (P) – MIE (P) – LLS (S) – Finish	



# Manly Course Booklet

<b>15A</b>	Start – NJW (S) – CJP (S) – GIR (S) – HBI (P) – MIW (S) – JRB (S) – MIE (S) – HBI (S) – LLS (S) — Finish	26
<b>15B</b>	Start – NJW (S) – CJP (S) – GIR (S) – HBI (P) – MISG (P) – LLS (S) — Finish	
<b>15C</b>	Start – NJW (S) – CJP (S) – GIR (S) – HBI (P) – SHR (P) – LLS (S) — Finish	



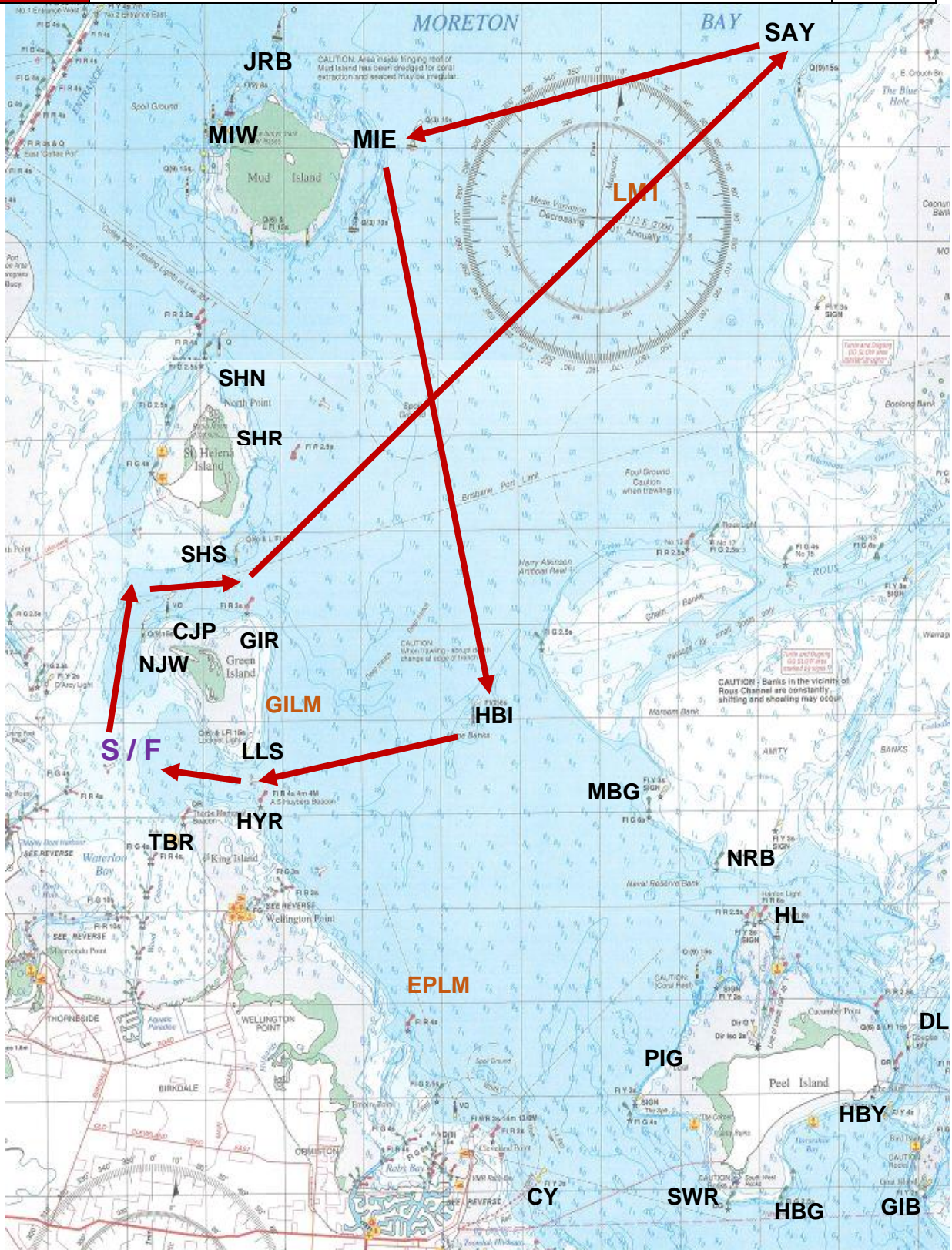


Manly Course Booklet

16A

Start - NJW (S) – CJP (S) – SHS (P) – SAY (P) – MIE (P) – HBI (S) – LLS (S) – Finish

32.2

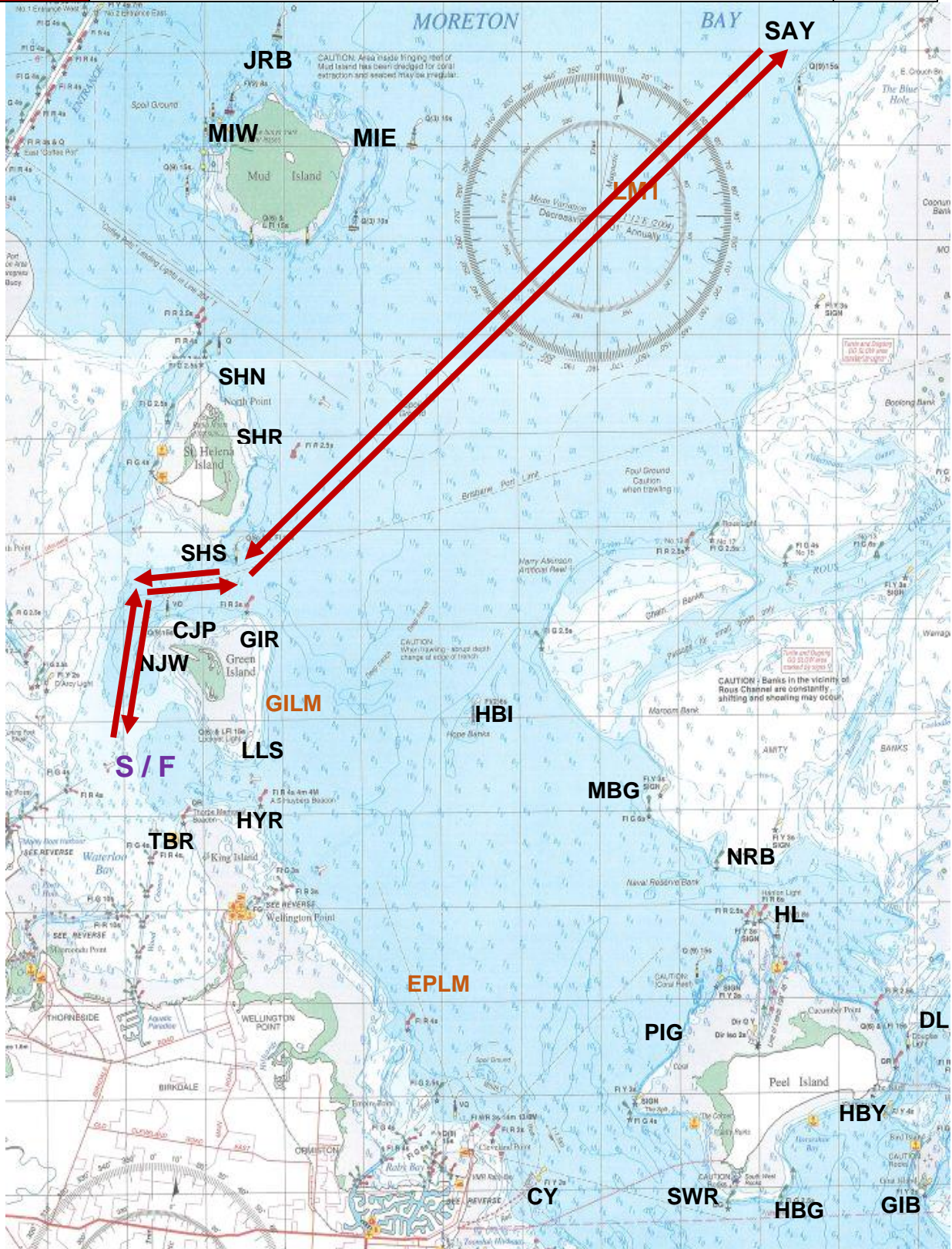


Manly Course Booklet

17A

Start - NJW (S) – CJP (S) – SHS (P) – SAY (P) – SHS (S) – CJP (P) – NJW (P) – Finish

30.2



# Manly Course Booklet

BORED IN A SOFT NORTH-EASTERLY HEADED TOWARDS THE SANDHILLS? DRAW YOUR OWN! WANT TO PAD OUT YOUR TIME PACKING A KITE? DRAW YOUR OWN!!!

19		
----	--	--

