



---

# OFF THE BEACH FROSTBITE SERIES

17<sup>TH</sup> July 2021

31<sup>ST</sup> July 2021

14<sup>TH</sup> August 2021

04<sup>TH</sup> September 2021

# SAILING INSTRUCTIONS (SI)

Organising Authority

**ROYAL QUEENSLAND YACHT SQUADRON LTD**

578 Royal Esplanade, Manly, QLD 4179

*The notation '[NP]' in a rule of the sailing instructions (SIs) means that a boat may not protest another boat for breaking that rule. This changes RRS 60.1(a).*

## **1. RULES**

- 1.1 The event is governed by the rules as defined in The Racing Rules of Sailing.
- 1.2 The prescriptions and special regulations of Australian Sailing (AS) Part 2 will apply ([See Here](#)).
- 1.3 Etchells & VXOne shall comply with AS Special Regulations Part 1, Category 7 (See [Here](#)).
  - 1.4 The applicable class rules will apply.
  - 1.5 Appendix P may apply.
- 1.6 The RQYS Constitution, Club Participation Rules, House Rules and Codes of Conduct will apply.
- 1.7 Competitors must comply with Qld Government COVID-19 contact tracing via the electronic app "Check in Qld".
- 1.8 Failure to SIGN ON shall result in that boat being penalised three (3) points for the first race of the session (but not worse than DNF). Failure to SIGN OFF shall result in that boat being penalised three (3) points for the last race of the session (but not worse than DNF). Penalties shall be applied without a hearing. This changes RRS 63.1 and A5.

## **2. CHANGES TO SAILING INSTRUCTIONS**

- 2.1. Any change to the sailing instructions will be posted before 0900 on the day it will take effect, except that any change to the schedule of races will be posted by 2000 on the day before it will take effect.

## **3. COMMUNICATIONS WITH COMPETITORS**

- 3.1. Notices to competitors will be posted on the official notice board located at <https://www.rqys.com.au/sailingnoticeboard/> .
- 3.2. The race office is located at The RQYS Sailing Office located adjacent to Rigging Lawn 2, telephone 3396 8666, email [sailing@rqys.com.au](mailto:sailing@rqys.com.au) .
- 3.3. [DP] While racing, except in an emergency, a boat shall not make voice or data transmissions and shall not receive voice or data communication that is not available to all boats.

## **4. CODE OF CONDUCT**

- 4.1 [DP] Competitors and support persons shall comply with reasonable requests from race officials.
- 4.2 [DP] Competitors and support persons shall handle any equipment or place advertising provided by the organizing authority with care, seamanship, in accordance with any instructions for its use and without interfering with its functionality.

## **5. SIGNALS MADE ASHORE**

- 5.1. Signals made ashore will be displayed at the official flag pole located at the top of the Eastern Gangway of the Bill Kirby Docks.
- 5.2. When flag AP is displayed ashore, '1 minute' is replaced with 'not less than 45 minutes' in Race Signals AP.

## 6. SCHEDULE OF RACES

Date	Event	Time/First Warning
17 <sup>th</sup> July 2021	Race 1 – Northern Course	1200hrs
	Race 1 – Southern Course	1230hrs
	Race 2	After Race 1
	Race 3	After Race 2
31 <sup>st</sup> July 2021	Race 4 – Northern Course	1200hrs
	Race 4 – Southern Course	1230hrs
	Race 5	After Race 4
	Race 6	After Race 5
14 <sup>th</sup> August 2021	Race 7 – Northern Course	1200hrs
	Race 7 – Southern Course	1230hrs
	Race 8	After Race 7
	Race 9	After Race 8
4 <sup>th</sup> September 2021	Race 10 – Northern Course	1200hrs
	Race 10 – Southern Course	1230hrs
	Race 11	After Race 10
	Race 12	After Race 11

- 6.1. One extra race per day may be sailed, provided that no class becomes more than one race ahead of schedule and the change is made according to SI 2.1.
- 6.2. No warning signal will be made after 1500.

## 7. CLASS FLAGS

Fleet	Flag
Etchells	White with Blue Class Insignia
Hobie 16	Blue with Black Class Insignia
Mixed Catamarans	Start with Hobie 16 Class
VX One	VX One Class Flag
29er	Red Insignia, White Background
49er	Red Insignia, White Background
Nacra 15	Blue Insignia, White Background
12ft, 14ft, 16ft and 18ft Skiffs, and Moths	Yellow Flag
Laser Full Rig	White with Red Class Insignia
Laser Radial	Green with Red Class Insignia
Laser 4.7	Yellow with Red Class Insignia
Windsurfing (incl. Foilers)	White with Red Bic Techno Insignia
Flying 11	White with Blue Flying 11 Insignia
Optimist and Sabot	White with Optimist Black Insignia
Mixed Northern Course	Code Flag E

Mixed Southern Course	Yellow Flag
Finn	White with Blue Insignia
O'Pen Skiff	Black Insignia, White Background
OK Dinghy	Red Insignia, White Background

**8. RACING AREA**

8.1 SI Attachment A displays the approximate race areas.

**9. COURSES**

9.1. The diagrams in SI Attachment B shows the courses, including the approximate angles between legs, the order in which marks are to be passed, and the side on which each mark is to be left.

9.2. No later than the warning signal, the race committee signal vessel will display the approximate compass bearing of the first leg.

**10. MARKS**

10.1. Marks are as described in SI Attachment B

**11. THE START**

11.1. Races will be started using RRS 26 with the warning signal made 5 minutes before the starting signal.

11.2. The starting line is between a staff displaying an orange flag on the signal vessel at the starboard end and the course side of the port-end starting mark.

11.3. Classes whose warning signal has not been made shall avoid the starting area during the starting sequence for other races.

11.4. A boat that does not start within 5 minutes after her starting signal will be scored Did Not Start without a hearing. This changes RRS A5.1 and A5.2.

**12. CHANGE OF THE NEXT LEG OF THE COURSE**

12.1. Northern Course: To change the next leg of the course, the race committee will lay a new mark (or move the finishing line) and remove the original mark as soon as practicable. When in a subsequent change a new mark is replaced, it will be replaced by an original mark.

12.2. Southern Course: To change the next leg of the course, the race committee will move the original mark or the finishing line to a new position.

**13. THE FINISH**

13.1. The finishing line is between a staff displaying a blue flag on the finishing vessel and the course side of the finishing mark.

**14. PENALTY SYSTEM**

14.1. For the foilers, skiff and multihull, RRS 44.1 is changed so that the Two-Turn Penalty is replaced by a One-Turn Penalty.

14.2. A boat which Does Not Compete (DNC) in a race shall be scored the number competitors within the fleet at the starting area, plus an additional three (3) points. This changes RRS A9.

## 15. TIME LIMITS [AND TARGET TIMES]

15.1. The time limit for the first boat in each class will be 60 minutes.

15.2. The Target Times are as follows:

Class	Target Time
Windsurfing Foilers	15 minutes
Windsurfing (excl. Foilers)	25 minutes
Optimist, Sabot, O'pen Skiff, Mixed Southern Course	30 minutes
All Laser, Flying 11, 125, OK Dinghy, Finn, Etchells, 9ers, Nacra15, Hobie 16, Mixed Northern Course	40 minutes

15.3. With the exception of the Optimist and Flying 11 classes, boats failing to finish within 15 minutes after the first boat sails the course and finishes shall be scored Did Not Finish (DNF) without a hearing. This changes RRS 35, A4 and A5.

15.4. Optimist and Flying 11 boats failing to finish within 25 minutes after the first boat sails the course and finishes shall be scored Did Not Finish (DNF) without a hearing. This changes RRS 35, A4 and A5.

## 16. HEARING REQUESTS

16.1. Protest forms are available at the RQYS Sailing Office. Protests and requests for redress or reopening shall be delivered there within the appropriate time limit.

16.2. For each class, the protest time limit is 60 minutes (90 minutes for any class when they sail on the course east of Green Island) after the last boat has finished the last race of the day or the race committee signals no more racing today, whichever is later.

16.3. Notices shall be posted on the online notice board no later than 30 minutes after the protest time limit to inform competitors of hearings in which they are parties or named as witnesses. Hearings shall be held in the specified protest room, beginning at the time posted.

16.4. Notices of protests by the Race Committee or Protest Committee shall be posted to inform boats under RRS 61.1(b).

16.5. Breaches of SI 16.2 and 16.3, 18, 19 and 27.2 shall not be grounds for a protest by a boat. This changes RRS 60.1(a).

16.6. Discretionary penalties may be applied by the Protest Committee.

16.7. All marine incidents must be reported to the Race Committee in addition to regulatory requirements to report marine incidents to Marine Safety Queensland (MSQ).

## 17. SCORING

18. Three (3) races are required to be completed to constitute a series

19. When fewer than four (4) races have been completed, a boat's series score will be the total of her race scores

20. When from four (4) to six (6) races have been completed, a boat's series score will be the total of her race scores excluding her worst score.

21. When from seven (7) to nine (9) races have been completed, a boat's series score will be the total of her race scores excluding her two worst score.

22. When ten (10) or more races have been completed, a boat's series score will be the total of her race scores excluding her three worst scores.

## 23. SAFETY REGULATIONS

23.1. All skippers shall SIGN ON before racing each day and SIGN OFF at the earliest possible

time after the completion of racing (but not later than the end of protest time).

- 23.2. The skipper of a boat that retires or does not intend to continue racing is required to SIGN OFF immediately on return to shore.
- 23.3. A boat that retires from a race shall notify the race committee as soon as possible.
- 23.4. Competitors shall comply with the following harbour bylaws:
  - a. All sailing vessels shall give way to powered vessels at all times whilst inside the Manly Boat Harbour.
  - b. Once outside the Manly Boat Harbour, competitors are to as soon as possible stay outside of the main channel, keeping clear of powered vessels.
  - c. No Spinnakers are to be flown in the Manly Harbour 6-knot area.
- 17.5 Boats failing to comply with SI24 may be protested by the Race Committee and receive a penalty less than DSQ as decided by the Protest Committee. This changes rules 63.1, A4 and A5.

## **24. REPLACEMENT OF CREW OR EQUIPMENT**

- 24.1. With written approval from the Organising Authority, skippers may change boats, sails and equipment throughout the season and retain points if they remain in the same class.
- 24.2. Boats intending to race with a sail number other than stipulated on their entry shall complete the Change to Sail Number register prior to racing. Failure to comply shall result in the boat being scored DNC without a hearing for all races on that day. This changes RRS 63.1, A4 and A5.

## **25. EQUIPMENT AND MEASUREMENT CHECKS**

- 25.1. A boat or equipment may be inspected at any time for compliance with the class rules, notice of race and sailing instructions.
- 25.2. [DP] When instructed by a race official on the water, a boat shall proceed to a designated area for inspection.

## **26. OFFICIAL VESSELS**

- 26.1. Official boats shall be marked with a white flag or sticker with black letters 'RC'.
- 26.2. Club Coaches may provide advice to any competitor during club racing

## **27. TRASH DISPOSAL**

- 27.1. Trash may be placed aboard official or support person vessels.

## **28. PRIZES**

- 28.1. Prizes will be awarded to 1<sup>st</sup>, 2<sup>nd</sup> and 3<sup>rd</sup> in each class/division for which 5 or more entries are received.

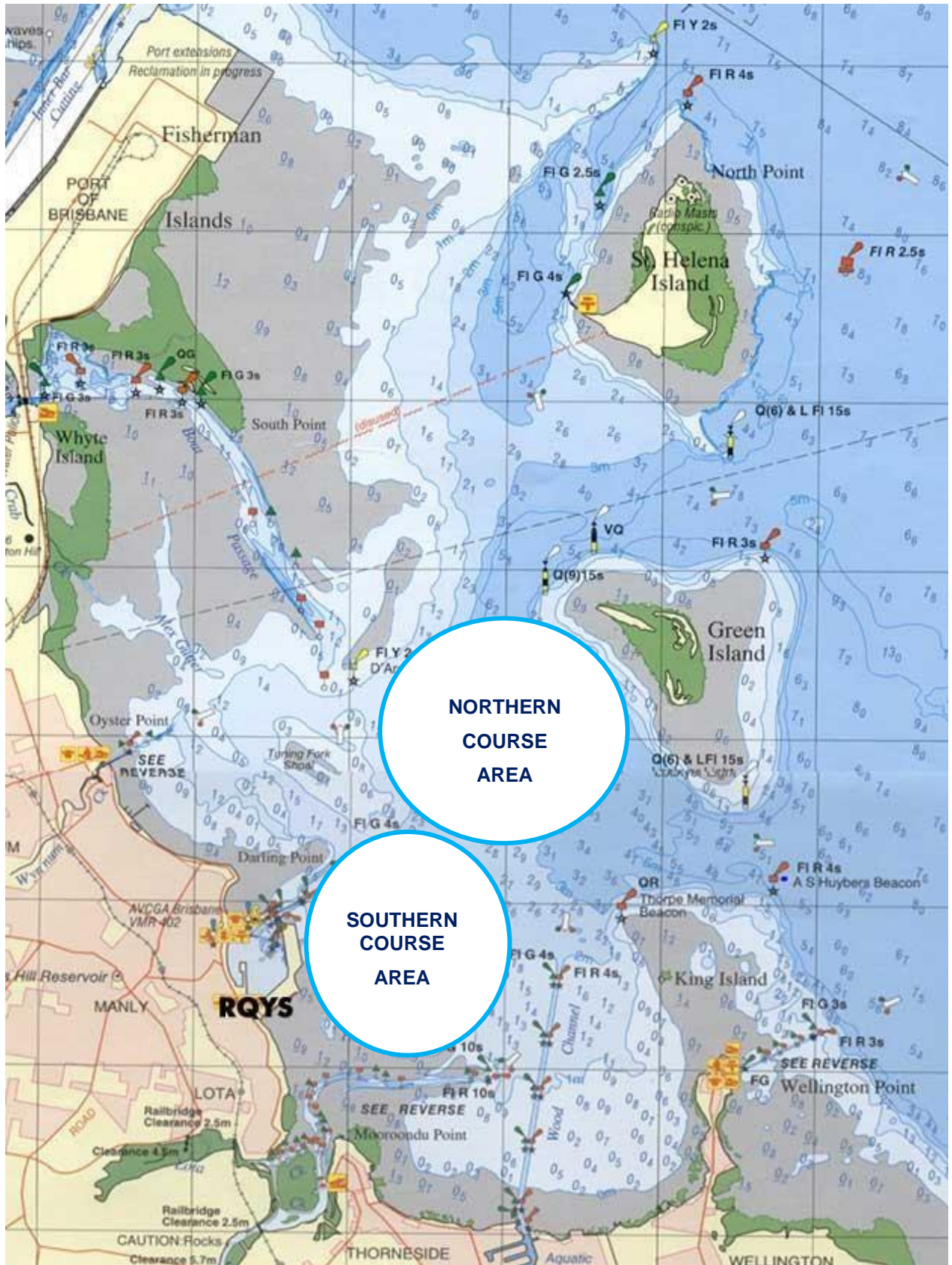
## **29. RISK STATEMENT**

- 29.1. RRS 3 states: 'The responsibility for a boat's decision to participate in a race or to continue to race is hers alone.' By participating in this event each competitor agrees and acknowledges that sailing is a potentially dangerous activity with inherent risks. These risks include strong winds and rough seas, sudden changes in weather, failure of equipment, boat handling errors, poor seamanship by other boats, loss of balance on an unstable platform and fatigue resulting in increased risk of injury. **Inherent in the sport of sailing is the risk of permanent, catastrophic injury or death by drowning, trauma, hypothermia or other causes.**

## **30. INSURANCE**

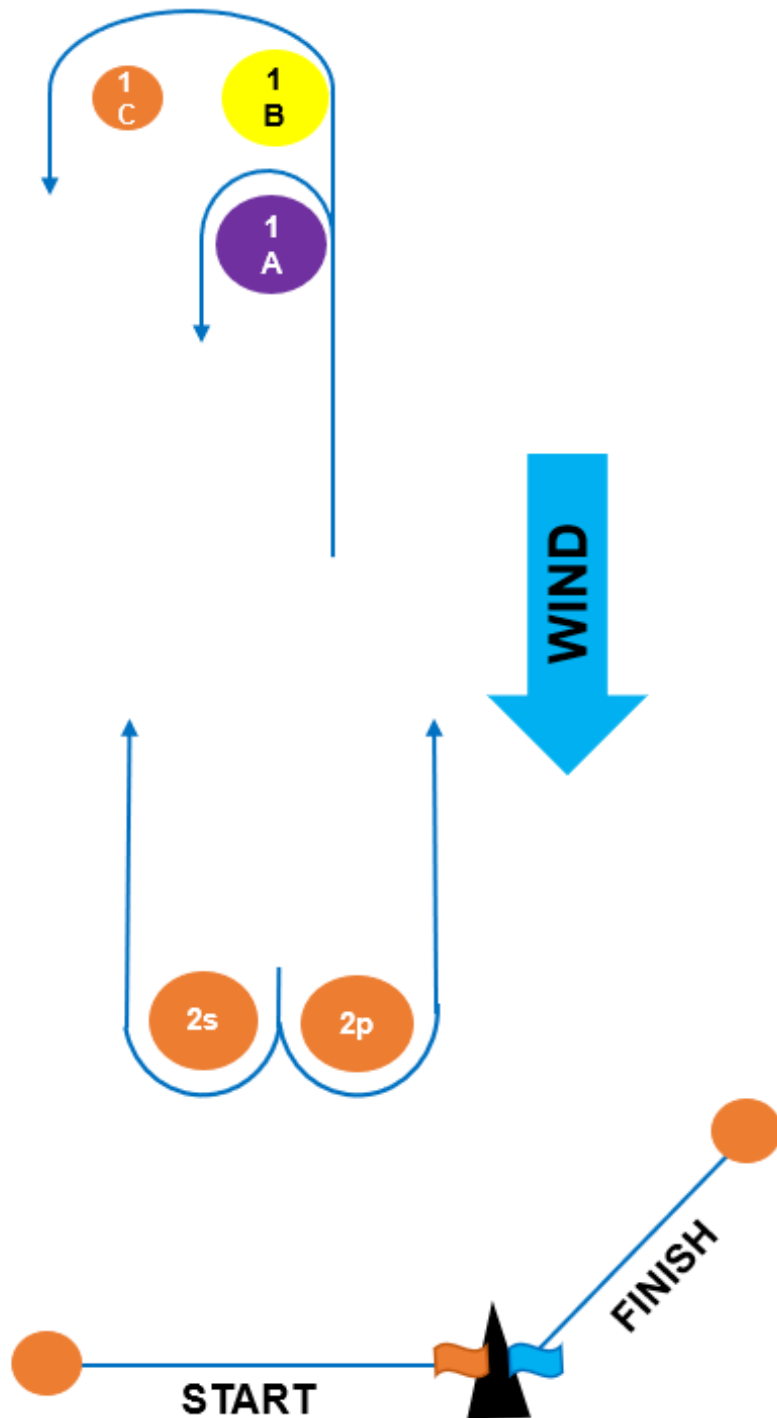
- 30.1. Each participating boat shall be insured with valid third-party liability insurance with a minimum cover of \$10,000,000AUD per incident or the equivalent.

# SI Attachment A



## SI Attachment B – Northern Course

CODE	COURSE	MARKS DESCRIPTION
LA2	Start – 1A – 2s/2p – 1A – 2p – Finish	<b>Mark 1A:</b> Purple Inflatable <b>Mark 1B:</b> Yellow Inflatable <b>Marks 2s &amp; 2p:</b> Orange Teardrop
LA3	Start – 1A – 2s/2p – 1A – 2s/2p – 1A – 2p – Finish	<b>Start Pin, Finish Pin, Mark 1C:</b> Orange Teardrop <b>Change Mark:</b> Black and White checked inflatable.
L2	Start – 1B – 1C – 2s/2p – 1B – 1C – 2p – Finish	
L3	Start – 1B – 1C – 2s/2p – 1B – 1C – 2s/2p – 1B – 1C – 2p – Finish	





## SI Attachment B – Southern Course

CODE	COURSE	MARKS DESCRIPTION
I2a	Start – 1a – 4s/4p – 1a – 2a – 3p – 5 – Finish	Mark 1: Orange Inflatable
I2	Start – 1 – 4s/4p – 1 – 2 – 3p – 5 – Finish	Marks 2, 5: Yellow Inflatables'
O1	Start – 1 – 2 – 3p – 5 – Finish	Marks: 1a, 2a : Purple Inflatable
O1a	Start – 1a – 2a – 3p – 5 – Finish	Start Pin, Finish Pin, 3s/3p & 4s/4p: Orange Teardrops
O2	Start – 1 – 2 – 3s/3p – 2 – 3p – 5 – Finish	
O2a	Start – 1a – 2a – 3s/3p – 2a – 3p – 5 – Finish	

