

QUEENSLAND LASER WINTER REGATTA

10 and 11 JULY 2021

Sailing Instructions (SIs)

for

**Laser, Laser Radial & Laser 4.7
Divisions**

And open to

**Junior, Youth, Open and Masters
Categories**

ORGANISING AUTHORITY

Royal Queensland Yacht Squadron Ltd.

On behalf of

The Queensland Laser Association Inc.

SAILING INSTRUCTIONS (SIs)

The notation '[NP]' in a rule of the sailing instructions (SIs) means that a boat may not protest another boat for breaking that rule. This changes RRS 60.1(a).

1. RULES

- 1.1 The event is governed by the rules as defined in The Racing Rules of Sailing.
- 1.2 The Special Regulations of Australian Sailing Inc. (AS) Addendum A - Part 2.
- 1.3 The rules and by-laws of the International Laser Class Association (ILCA).
- 1.4 Personal flotation devices shall be worn at all times whilst afloat. Such devices shall be in good condition and in accordance with the specifications issued or approved by a national authority or standards organisation and branded in the country of origin or manufacture. ATTENTION IS DRAWN TO RRS Fundamental Rule 1.2.
- 1.5 All Competitors and guests must be in Compliance with Qld Government COVID-19 contact tracing via the electronic app "Check in Qld".

2. CHANGES TO SAILING INSTRUCTIONS

- 2.1. Any change to the sailing instructions will be posted before 0900 on the day it will take effect, except that any change to the schedule of races will be posted by 2000 on the day before it will take effect.

3. COMMUNICATIONS WITH COMPETITORS

- 3.1. Notices to competitors will be posted on the official notice board located at <https://www.rqys.com.au/sailingnoticeboard/> .
- 3.2. The race office is located at The Royal Queensland Yacht Squadron, telephone +61 7 3396 8666, email sailing@rqys.com.au .
- 3.3. [DP] While racing, except in an emergency, a boat shall not make voice or data transmissions and shall not receive voice or data communication that is not available to all boats.

4. CODE OF CONDUCT

- 4.1 [DP] Competitors and support persons shall comply with reasonable requests from race officials.
- 4.2 [DP] Competitors and support persons shall handle any equipment or place advertising provided] by the organizing authority with care, seamanship, in accordance with any instructions for its use and without interfering with its functionality.

5. SIGNALS MADE ASHORE

- 5.1. Signals made ashore will be displayed at the official flag pole located at the top of the Eastern Gang of the Bill Kirby Docks.
- 5.2. When flag AP is displayed ashore, '1 minute' is replaced with 'not less than 45 minutes' in Race Signals AP.

6. SCHEDULE OF RACES

DATE	ACTIVITY	TIME
Friday 9 July 2021	Coaching clinic*	1000 to 1600
Saturday 10 July 2021	Competitors meeting	1145
	Race 1 Race 2	First Warning 1300 Following Race 1
Sunday 11 July 2021	Race 3, 4 and 5	First Warning 1000 All races back to back
	Presentation of prizes & Barbeque	RQYS Boardwalk ASAP after Racing

* The Coaching clinic will only proceed if sufficient numbers wish to participate. Please register your interest in the coaching clinic by email to QLA Secretary, Phil Danks at phil.danks@bigpond.com. A fee of \$40 for the coaching clinic will be payable to QLA. IE not included with the regatta entry fee.

6.1. One extra race per day may be sailed, provided that no class becomes more than one race ahead of schedule and the change is made according to SI 2.1.

6.2. To alert boats that a race or sequence of races will begin soon, the orange starting line flag will be displayed with one sound at least five minutes before a warning signal is made.

6.3. On the last scheduled day of racing no warning signal will be made after 1500.

7. CLASS FLAGS

7.1. The Laser Standard Fleet Flag will be a white flag with a red Laser emblem

7.2. The Laser Radial Fleet Flag will be a green flag with a red Laser emblem.

7.3. The Laser 4.7 Fleet Flag will be a yellow flag with a 4.7 emblem.

8. RACING AREA

8.1 SI Attachment A shows the location of the racing area.

9. COURSES

9.1. The diagram in SI Attachment B shows the course, including the approximate angles between legs, the order in which marks are to be passed, and the side on which each mark is to be left.

9.2. No later than the warning signal, the race committee signal boat will display the course to be sailing by each fleet and the approximate compass bearing of the first leg.

10. MARKS

10.1. Marks are described in SI Attachment B.

11. OBSTRUCTIONS

11.1. Boats shall not cross the start/finish lines unless they are starting or finishing.

12. THE START

12.1. The starting line is between a staff displaying an orange flag on the signal vessel at the starboard end and the course side of the port-end starting mark.

12.2. Boats whose warning signal has not been made shall avoid the starting area during the starting sequence for other races.

12.3. If any part of a boat's hull is on the course side of the starting line at her starting signal and she is identified, the race committee will attempt to hail her sail number. Failure to hail her number, failure of her to hear such a hail, or the order in which boats are hailed will not be grounds for a redress for request. This changes RRS 62.1(a).

12.4. A boat that does not start within four (4) minutes after her starting signal will be scored Did Not Start without a hearing. This changes RRS A5.1 and A5.2.

13. CHANGE OF THE NEXT LEG OF THE COURSE

- 13.1. To change the next leg of the course, the race committee will lay a new mark (or move the finishing line) and remove the original mark as soon as practicable. When in a subsequent change a new mark is replaced, it will be replaced by an original mark.

14. THE FINISH

- 14.1. The finish line is between a staff displaying a blue flag on the signal vessel at the starboard end and the course side of the port-end finishing mark.

15. TIME LIMITS [AND TARGET TIMES]

- 15.1. Target time for each race is 50 minutes
- 15.2. The time limit for the first boat in each class will be 70 minutes.
- 15.3. Boats failing to finish within 15 minutes after the first boat sails the course and finishes shall be scored Did Not Finish (DNF) without a hearing. This changes RRS 35, A4 and A5
- 15.4. Failure to meet the Target Time will not be grounds for redress. This changes RRS 62.1(a).

16. HEARING REQUESTS

- 16.1. For each division, the protest time limit is 60 minutes after the last boat in that division finishes the last race of the day or the race committee signals no more racing today, whichever is later. The time will be posted on the official notice board.
- 16.2. Hearing request forms are available from the race office at <https://www.rqys.com.au/regatta-club-racing-documents-auditors/> or from the Sailing Office.
- 16.3. Notices will be posted no later than 30 minutes after the protest time limit to inform competitors of hearings in which they are parties or named as witnesses. Hearings will be held in the protest room, located at Sailing Office, beginning at the time posted.

17. SCORING

- 17.1. Two (2) races are required to be completed to constitute a series.
- 17.2. (a) When fewer than Four (4) races have been completed, a boat's series score is the total of her race scores.
- (b) When Four (4) or more races have been completed, a boat's series score is the total of her race scores excluding her worst scores.

18. SAFETY REGULATIONS

- 18.1. All skippers shall SIGN ON before racing each day and SIGN OFF at the earliest possible time after the completion of racing (but not later than the end of protest time). The skipper of a boat that retires or does not intend to continue racing is required to SIGN OFF immediately on return to shore. Sign On/Off sheets will be located at the bottom of the Sailing Office.
- 18.2. A boat that retires from a race shall notify the race committee as soon as possible.
- 18.3. Competitors shall comply with the following harbour bylaws:
- (a) All sailing vessels shall give way to powered vessels at all times whilst inside the Manly Boat Harbour.
- (b) Once outside the Manly Boat Harbour, competitors are to as soon as possible stay outside of the main channel, keeping clear of powered vessels.
- 18.4. Boats failing to comply with SI19 may be protested by the Race Committee
- 18.5. All Competitors and guests must be in Compliance with Qld Government COVID-19 contact tracing via the electronic app "Check in Qld".

19. REPLACEMENT OF CREW OR EQUIPMENT

- 19.1. [DP] Substitution of damaged or lost equipment is not allowed unless authorized in writing by the Race Committee. Requests for substitution shall be made to the committee at the first reasonable opportunity, which may be after the race.

20. EQUIPMENT AND MEASUREMENT CHECKS

- 20.1. A boat or equipment may be inspected at any time for compliance with the class rules, notice of race and sailing instructions.
- 20.2. [DP] When instructed by a race official on the water, a boat shall proceed to a designated area for inspection.

21. OFFICIAL VESSELS

- 21.1. Official vessels will be identified with a white flag/sticker with RC or Media.

22. [DP] SUPPORT TEAMS

- 22.1. Team leaders, coaches and other support persons shall stay outside areas where boats are racing from the time of the preparatory signal for the first start until all boats have finished or retired or the race committee signals a postponement, general recall or abandonment.

23. TRASH DISPOSAL

- 23.1. Trash may be placed aboard official or support person vessels.

24. PRIZES

- 24.1. All Prizes will be supplied by the Queensland Laser Association Inc.
- 24.2. Prizes will be awarded in all Division Categories where sufficient entries are received. (Refer clause 2.3.)
- 24.3. Presentation of trophies will commence as soon as practical after completion of the last race.

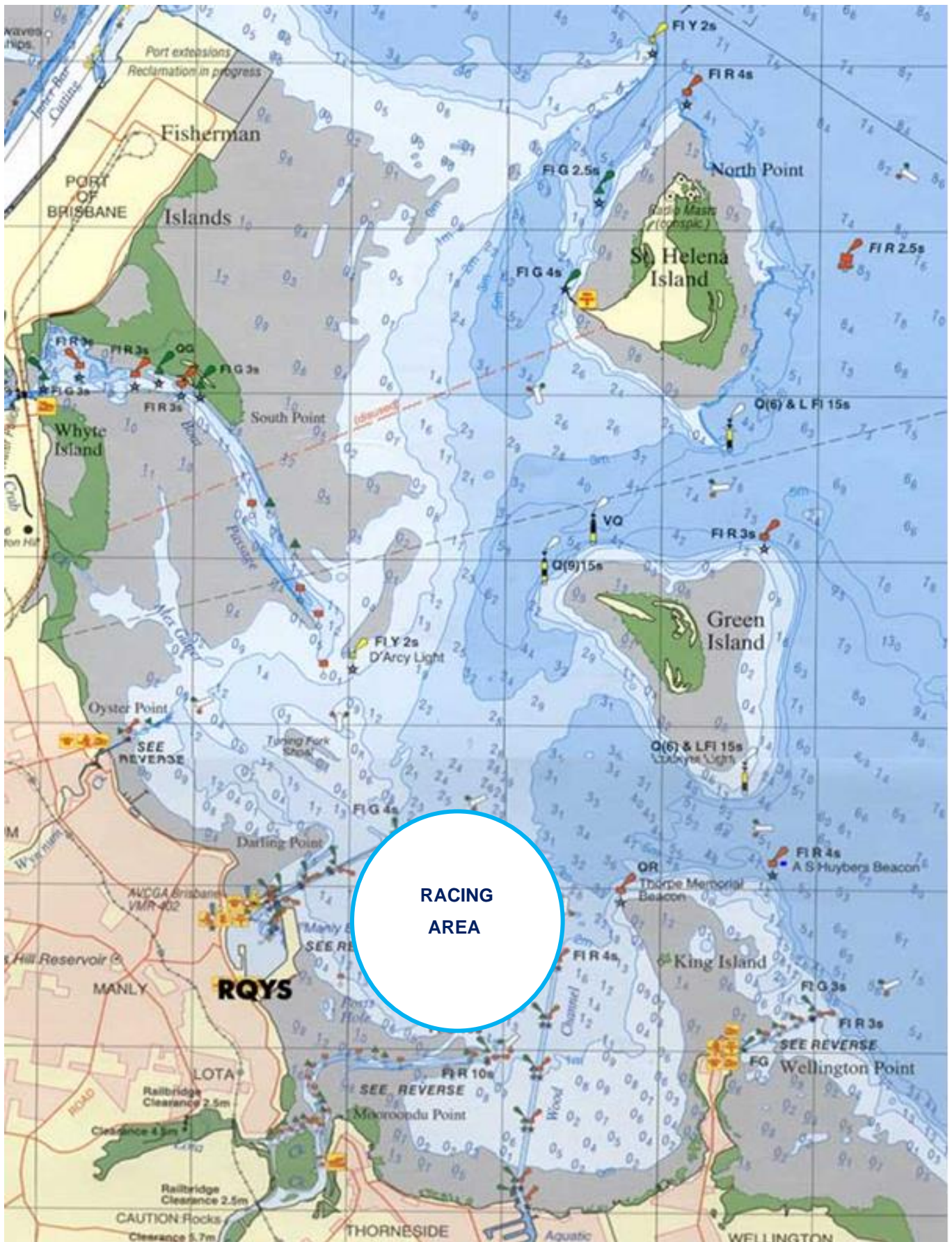
25. RISK STATEMENT

- 25.1. RRS 3 states: 'The responsibility for a boat's decision to participate in a race or to continue to race is hers alone.' By participating in this event each competitor agrees and acknowledges that sailing is a potentially dangerous activity with inherent risks. These risks include strong winds and rough seas, sudden changes in weather, failure of equipment, boat handling errors, poor seamanship by other boats, loss of balance on an unstable platform and fatigue resulting in increased risk of injury. **Inherent in the sport of sailing is the risk of permanent, catastrophic injury or death by drowning, trauma, hypothermia or other causes.**

26. INSURANCE

- 26.1. Each participating boat shall be insured with valid third-party liability insurance with a minimum cover of \$10,000,000AUD per incident or the equivalent.

SI Attachment A



SI Attachment B

CODE	COURSE	MARKS DESCRIPTION
L2	Start – 1 – 2s/2p – 1 – 2p - Finish	Marks 1: Purple Inflatable
		Marks 2s & 2p: Yellow Inflatable
L3	Start – 1 – 2s/2p – 1 – 2s/2p – 1 – 2p - Finish	Start Pin, Finish Pin: Orange Teardrop
		Change Mark: White with black band Inflatable

