



OFF THE BEACH FROSTBITE SERIES

17TH July 2021

31ST July 2021

14TH August 2021

04TH September 2021

NOTICE OF RACE (NoR)

ORGANISING AUTHORITY

ROYAL QUEENSLAND YACHT SQUADRON LTD
578 Royal Esplanade, Manly, QLD 4179

The notation '[NP]' in a rule means that a boat may not protest another boat for breaking that rule. This changes RRS 60.1(a).

1. RULES

- 1.1 The event is governed by the rules as defined in The Racing Rules of Sailing.
- 1.2 The prescriptions and special regulations of Australian Sailing (AS) Part 2 will apply ([See Here](#)).
- 1.3 Etchells & VXOne shall comply with AS Special Regulations Part 1, Category 7 (See [Here](#)).
- 1.4 The applicable class rules will apply.
- 1.5 Appendix P may apply.
- 1.6 The RQYS Constitution, Club Participation Rules, House Rules and Codes of Conduct will apply.
- 1.7 Competitors must comply with Qld Government COVID-19 contact tracing via the electronic app "Check in Qld".
- 1.8 Failure to SIGN ON shall result in that boat being penalised three (3) points for the first race of the session (but not worse than DNF). Failure to SIGN OFF shall result in that boat being penalised three (3) points for the last race of the session (but not worse than DNF). Penalties shall be applied without a hearing. This changes RRS 63.1 and A5.

2. SAILING INSTRUCTIONS

- 2.1 The sailing instructions will be available after 1200 on 16th July 2021 at [Online Notice Board](#).

3. COMMUNICATION

- 3.1 The online official notice board is located at <https://www.rqys.com.au/sailingnoticeboard/> .
- 3.2 [DP] While racing, except in an emergency, a boat shall not make voice or data transmissions and shall not receive voice or data communication that is not available to all boats.

4. ELIGIBILITY AND ENTRY

- 4.1 Seasons entry is open to dinghies, boards, OTB Multihulls, VXOne and Etchells owned by financial members of the Royal Queensland Yacht Squadron.
- 4.2 Skippers and Crew with seasons entries are required to be financial members of the Royal Queensland Yacht Squadron in the appropriate category.
- 4.3 Casual Entries can be lodged in advance online or, can be lodged on the day of racing before first warning signal of the day, by seeing the Sailing Office staff upstairs in the Marine Sports Amenities Building.
- 4.4 Casual entrants are required to be a member of Australian Sailing by having a club membership with a yacht or sailing club, or by obtaining an RQYS Day Pass / Sail Pass.
- 4.5 Classes and divisions will be determined based on the number of entries received.
- 4.6 All entrants including skippers and crew must be a member of Australian Sailing (AS) at both the time of entry and for the duration of the event. Check your AS Membership Number here: <https://www.sailing.org.au/member-finder/> .
- 4.7 List of eligible classes/divisions:
 - 4.7 (a) Northern Course: 29ers, 49ers, Skiffs, VX1, Nacra 15, Hobie 16, Finns, Etchells, Northern Course Mixed.
 - 4.7 (b) Southern Course: Boards, All lasers, Flying 11, Optimist Intermediate & Open, Sabot, Open Skiff, Southern Course Mixed.
- 4.8 Class with fewer than five (5) entries shall race in the mixed Division of that course.
- 4.9 Boats may enter the event by registering online at <https://www.rqys.com.au/off-the-beach-frostbite-series/> .
- 4.10 To be considered an entry in the event, a boat shall complete all registration requirements and pay all fees.
- 4.11 Late entries will be accepted at the discretion of the Organising Authority.

5. FEES

- 5.1 Entry fees are as follows:
- (a) \$75 series entry (RQYS members only)
 - (b) \$25 Casual entry – RQYS Member
 - (c) \$30 Casual entry – Non RQYS Member
- 5.2 Entries cancelled in the fortnight preceding the event will not be refunded. If cancellation occurs prior to this date 75% of the entry fee will be refunded upon receipt of a written request.
- 5.3 If participation in the event is prevented due to COVID-19 restrictions 100% of the entry fee will be refunded upon a written request.

6. ADVERTISING

- 6.1 Boats may be required to display advertising chosen and supplied by the organizing authority.

7. SCHEDULE

- 7.1 Dates of racing:

Date	Event	Time/First Warning
17 th July 2021	Race 1 – Northern Course	1200hrs
	Race 1 – Southern Course	1230hrs
	Race 2	After Race 1
	Race 3	After Race 2
31 st July 2021	Race 4 – Northern Course	1200hrs
	Race 4 – Southern Course	1230hrs
	Race 5	After Race 4
	Race 6	After Race 5
14 th August 2021	Race 7 – Northern Course	1200hrs
	Race 7 – Southern Course	1230hrs
	Race 8	After Race 7
	Race 9	After Race 8
4 th September 2021	Race 10 – Northern Course	1200hrs
	Race 10 – Southern Course	1230hrs
	Race 11	After Race 10
	Race 12	After Race 11

- 7.2 On the last scheduled race of each day no warning signal will be made after 1530.

8. EQUIPMENT INSPECTION

- 8.1 Boats may be inspected at any time for compliance with the class rules and Sailing Instructions. On the water, a boat can be instructed by a race committee equipment inspector, safety auditor or measurer to proceed immediately to a designated area for inspection.

9. VENUE

- 9.1 NoR Attachment A shows the plan of the event venue.
- 9.2 NoR Attachment B shows the location of the racing areas.

10. COURSES

- 10.1 NoR Attachment C shows the planned the courses.

11. PENALTY SYSTEM

- 11.1 For the foilers, skiff and multihull, RRS 44.1 is changed so that the Two-Turn Penalty is replaced by a One-Turn Penalty.
- 11.2 A boat which Does Not Compete (DNC) in a race shall be scored the number competitors within the fleet at the starting area, plus an additional three (3) points. This changes RRS A9.

12. SCORING

- 12.1 Three (3) races are required to be completed to constitute a series
- 12.2 (a) When fewer than four (4) races have been completed, a boat's series score will be the total of her race scores
- 12.2 (b) When from four (4) to six (6) races have been completed, a boat's series score will be the total of her race scores excluding her worst score.
- 12.2 (c) When from seven (7) to nine (9) races have been completed, a boat's series score will be the total of her race scores excluding her two worst score.
- 12.2 (d) When ten (10) or more races have been completed, a boat's series score will be the total of her race scores excluding her three worst scores.

13. CHARTERED OR LOANED BOATS

- 13.1 A chartered or loaned boat may carry national letters or a sail number in contravention of her class rules, provided that the race committee has approved her sail identification before the first race.

14. RISK STATEMENT

- 14.1 RRS 3 states: 'The responsibility for a boat's decision to participate in a race or to continue to race is hers alone.' By participating in this event each competitor agrees and acknowledges that sailing is a potentially dangerous activity with inherent risks. These risks include strong winds and rough seas, sudden changes in weather, failure of equipment, boat handling errors, poor seamanship by other boats, loss of balance on an unstable platform and fatigue resulting in increased risk of injury. **Inherent in the sport of sailing is the risk of permanent, catastrophic injury or death by drowning, trauma, hypothermia or other causes.**

15. INSURANCE

- 15.1 Each participating boat shall be insured with valid third-party liability insurance with a minimum cover of \$10,000,000AUD per incident or the equivalent.

16. PRIZES

- 16.1 Prizes will be awarded to 1st, 2nd and 3rd in class/division for which 5 or more entries are received.

17. FURTHER INFORMATION

- 17.1 For further information please contact:
RQYS Sailing: 07 3396 8666 / sailing@rqys.com.au
578 Royal Esplanade MANLY QLD 4179 AUS
www.rqys.com.au

LOCATION INFORMATION

[Regatta Website](#) View the regatta website to access Sailing Instructions, Entry, Amendments and more

Accommodation: Ample and varied accommodation is available in the local area. Early bookings are recommended.

The Manly Marina Cove Motel is located on the grounds of RQYS – www.manlymarinacove.com

Limited [camping](#) facilities **may** be available in the grounds of RQYS.

Access to RQYS: RQYS Reception is available to assist with access between the hours of 7am and 7pm.

Attachment A

RQYS DIRECTORY

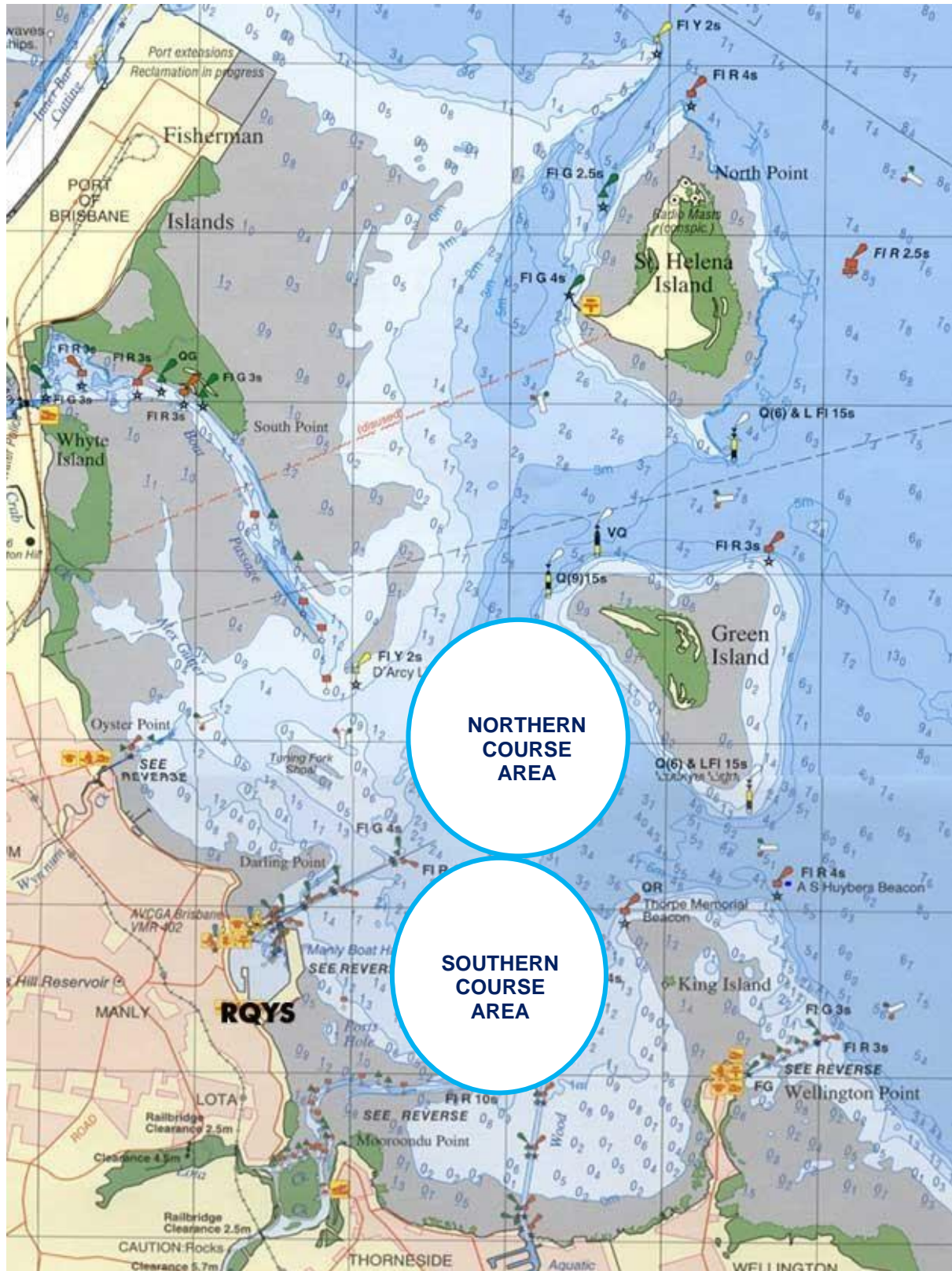


- | | | | |
|--|-------------------------------------|--------------------------------|----------------------------|
| 1 RQYS CLUBHOUSE
Reception, Bar, Cafe, Restaurant, Auditorium,
Commodore's Lounge, Girls Room, Flags Room | 20 DAVID GLENN BOAT BUILDERS | 32 MAIN RIGGING LAWN | 41 SLIPWAY RAMP |
| 2 MARINA & SAILING OFFICE | 21 ANDREW WOODFORTH MARINE | 33 RIGGING LAWN 2 | 42 RAMP 4 |
| 3 YACHTING QUEENSLAND | 22 SEADOG MARINE | 34 RIGGING LAWN 3 | 43 PUBLIC CAR PARK |
| 4 MANLY MARINA COVE MOTEL | 23 JSA MARINE | 35 RIGGING LAWN 4 | 44 MOTEL CAR PARK |
| 5 WINDSURFING CENTRE OF EXCELLENCE | 24 PROFESSIONAL BOAT CARE | 36 RIGGING LAWN 5 | 45 MEMBERS CAR PARK |
| 6 MARINE RADIO MORETON BAY | 25 ELECTECH INDUSTRIES | 37 CAMPING AREA | |
| 7 THE BAY LOOKOUT | 26 UNOCCUPIED TRADES SPACE | 38 PUBLIC ACCESS RAMP | |
| 8 EASTERN BEACH | 27 DAVID'S CUSTOM TRIMMERS | 39 SAILING ACADEMY RAMP | |
| 9 DAVENPORT DRIVE LOOKOUT | 28 MULTIHULL CENTRAL | 40 MAIN LAUNCHING RAMP | |
| 10 BILL KIRBY JETTY | 29 GREEN MARINE | | |
| 11 FUEL WHARF & LAND FUEL | 30 SUPERIOR YACHT SOLUTIONS | | |
| 12 GYM | 31 ACADEMY RIGGING LAWN | | |
| 13 TRAVELIFT & SLEWING CRANE | | | |
| 14 SLIPWAY 1 | | | |
| 15 SLIPWAY 2 | | | |
| 16 STORAGE SHEDS | | | |
| 17 QUEENSLAND MARINE TRAINING SERVICES | | | |
| 18 QUEENSLAND MARINE TRAINING SERVICES | | | |
| 19 UNOCCUPIED TRADES SPACE | | | |



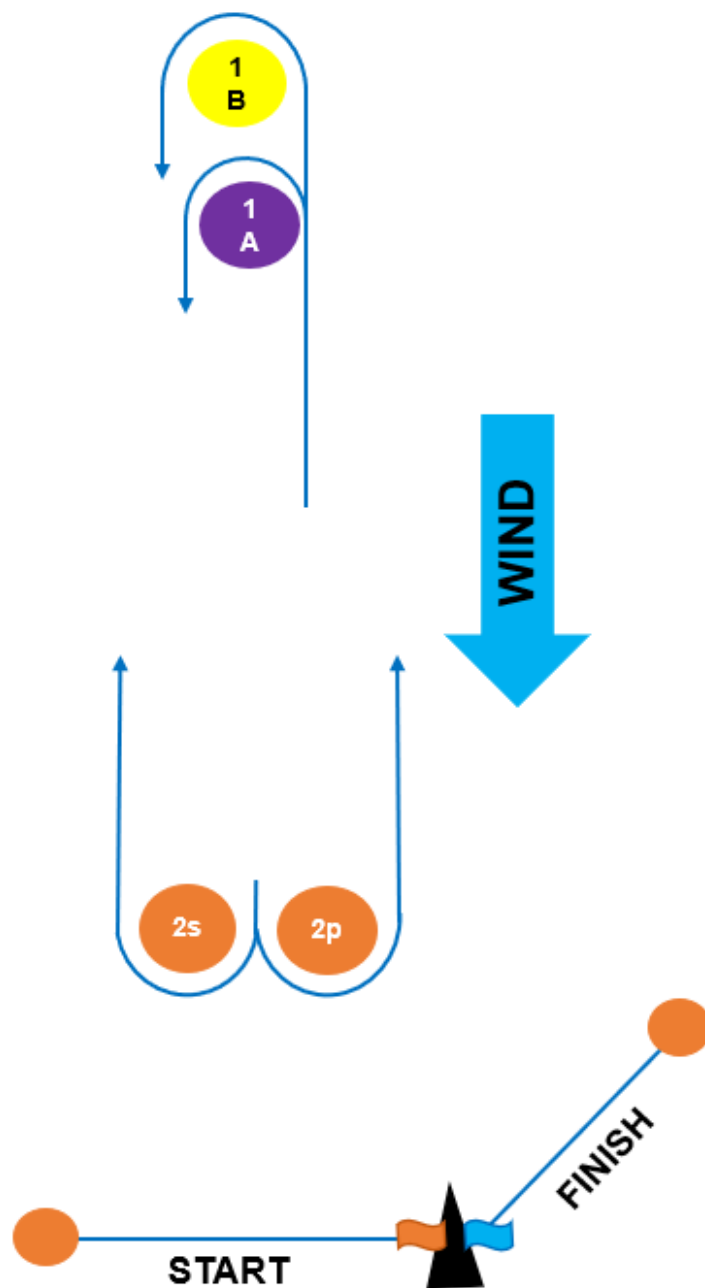
Attachment B

RACING AREAS



Attachment C – Northern Course

CODE	COURSE	MARKS DESCRIPTION
LA2	Start – 1A – 2s/2p – 1A – 2p – Finish	Mark 1A: Purple Inflatable Mark 1B: Yellow Inflatable Marks 2s & 2p: Orange Teardrop
LA3	Start – 1A – 2s/2p – 1A – 2s/2p – 1A – 2p – Finish	Start Pin, Finish Pin: Orange Teardrop Change Mark: Black and White checked inflatable.
L2	Start – 1B – 2s/2p – 1B – 2p – Finish	
L3	Start – 1B – 2s/2p – 1B – 2s/2p – 1B – 2p – Finish	



Attachment C – Southern Course

CODE	COURSE	MARKS DESCRIPTION
I2a	Start – 1a – 4s/4p – 1a – 2a – 3p - Finish	Mark 1: Orange Inflatable
I2	Start – 1 – 4s/4p – 1 – 2 – 3p - Finish	Marks 2, 5: Yellow Inflatables'
O1	Start – 1 – 2 – 3p - Finish	Marks: 1a, 2a : Purple Inflatable
O1a	Start – 1a – 2a – 3p - Finish	Start Pin, Finish Pin, 3s/3p & 4s/4p: Orange Teardrops
O2	Start – 1 – 2 – 3s/3p – 2 – 3p - Finish	
O2a	Start – 1a – 2a – 3s/3p – 2a – 3p - Finish	

