



# Royal Queensland Yacht Squadron

BILL KIRBY JETTY & DEANBILLA BAY  
MOORINGS POLICY

Revised

June 2021

## PURPOSE

The Royal Queensland Yacht Squadron provides a range of destinations for its members including the Bill Kirby Jetty at Manly, our “down the Bay” facility at Canaipa and moorings at Deanbilla Bay.

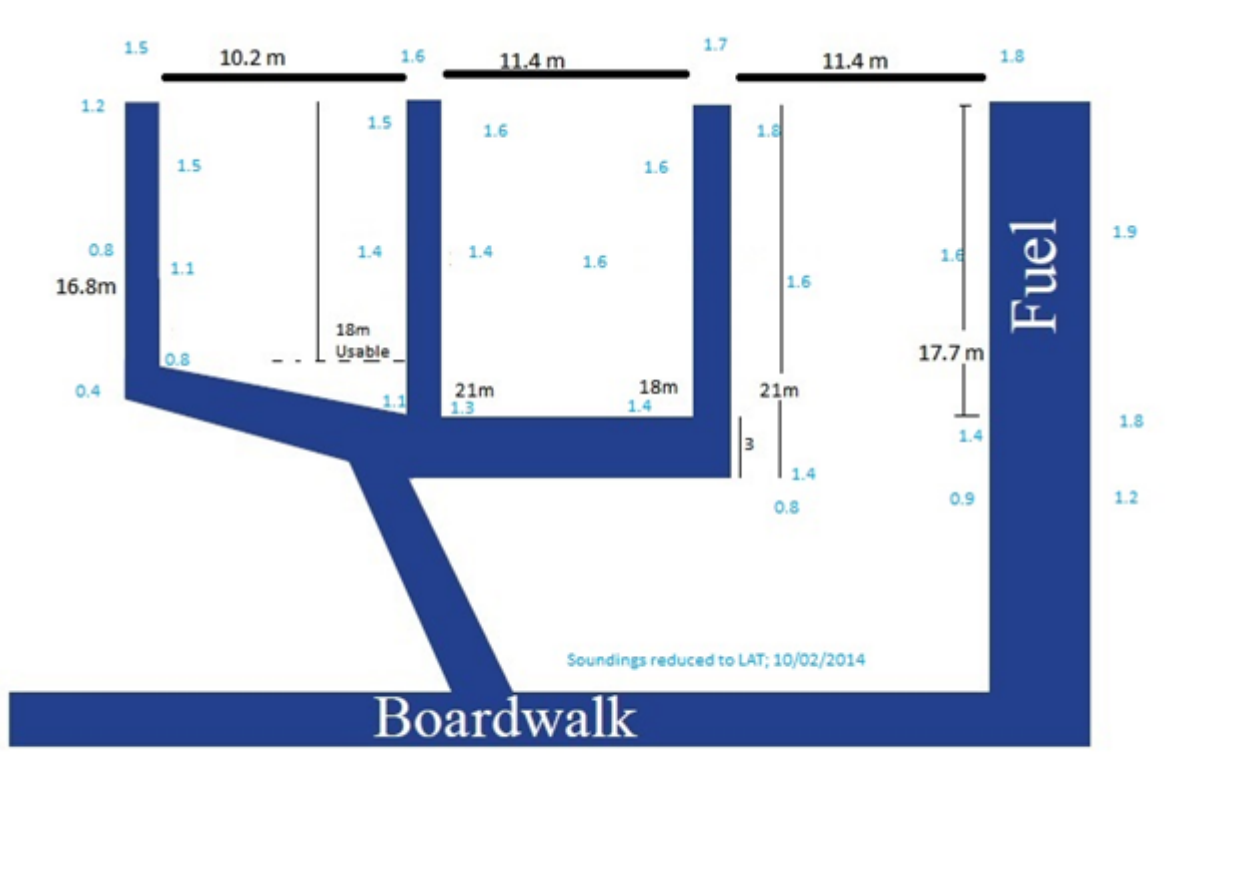
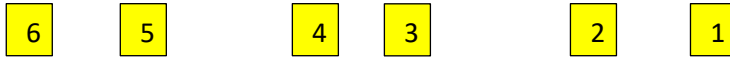
## POLICY FOR USE OF BILL KIRBY JETTY & DEANBILLA BAY MOORINGS

- The RQYS Bill Kirby Jetty berths and Deanbilla Bay swing moorings may only be booked and used by current RQYS Full Members. (“Full Members” include the following categories ... Fully Paid, Full, Full Spouse, Young Adult, Senior, Senior Long Term & Life Members).
- **Non-member enquiries for berths or moorings are to be referred to the General Manager. \***
- **Members must contact the Marina Office before using or occupying a berth on the Bill Kirby Jetty or an RQYS Swing Mooring at Deanbilla Bay. \***
- All bookings, (Casual on the day or reservation bookings) are to be made by contacting the RQYS Marina Office between 8am and 4pm 7 days a week on Phone – 07 3393 3554
- The maximum reservation booking is 48 hours in duration.
- A Reservation Booking can be made up to six months ahead and is limited to two nights per week and one weekend per month but can be extended as a casual booking on the day if free and approved by the General Manager.
- Members extending their stay past 48 hours on the Bill Kirby Jetty may be charged standard marina moorings fees.
- Members are to nominate an estimated arrival and departure time for any booking.
- Each berth and mooring can be identified by a number, it is the members’ responsibility to ensure they utilise the berth or mooring allocated.

\* Emergency situations excluded.

**BILL KIRBY JETTY SPECIFIC REQUIREMENTS**

- Normally berths 1-3 will be available for member reservations, other berths can be made available with prior notice.
- Depths are related to LAT; masters are responsible for ensuring their vessel has sufficient depth of water at low tide.
- 240V / 10A power is available on the Bill Kirby Jetty; 3-phase power may be available with prior notice.
- No contractor work is permitted to be carried out on boats berthed at the Bill Kirby Jetty.
- Berthing may not be available during regattas and other events.
- Berths are not to be used for commercial purposes.



## DEANBILLA BAY MOORING SPECIFIC REQUIREMENTS

- All vessels must be RQYS registered and must display an RQYS burgee at all times while on the mooring.
- Members to provide full vessel details including full comprehensive insurance details, registration number, vessel name, make, power or sail, description, LOA, Beam, Draft, total weight and a contact phone number.
- Vessels must not exceed the maximum swing mooring weight of 40 tonnes.
- Maximum LOA is limited to the maximum Swing radius of the mooring.
- Rafting is permitted providing the total raft combination does not exceed 40 tonnes in total weight or the maximum swing radius of that mooring.
- In the case of any unauthorized use or interference ...
  1. Ask the offending vessel to vacate the mooring in a polite and respectful manner.
  2. If the offending vessel does not comply, please take a photo of the offending vessel ensuring that its registration details are visible and note the date/time.
  3. Please report the unauthorized use to the RQYS Marina Office and forward the photo and details.

### Maximum Permitted Swing Radius

30m – BS1020, BS1021, BS1022, BS1031, BS1032, BS1040

20m – BS1041, BS1048, BS1053, BS1054

